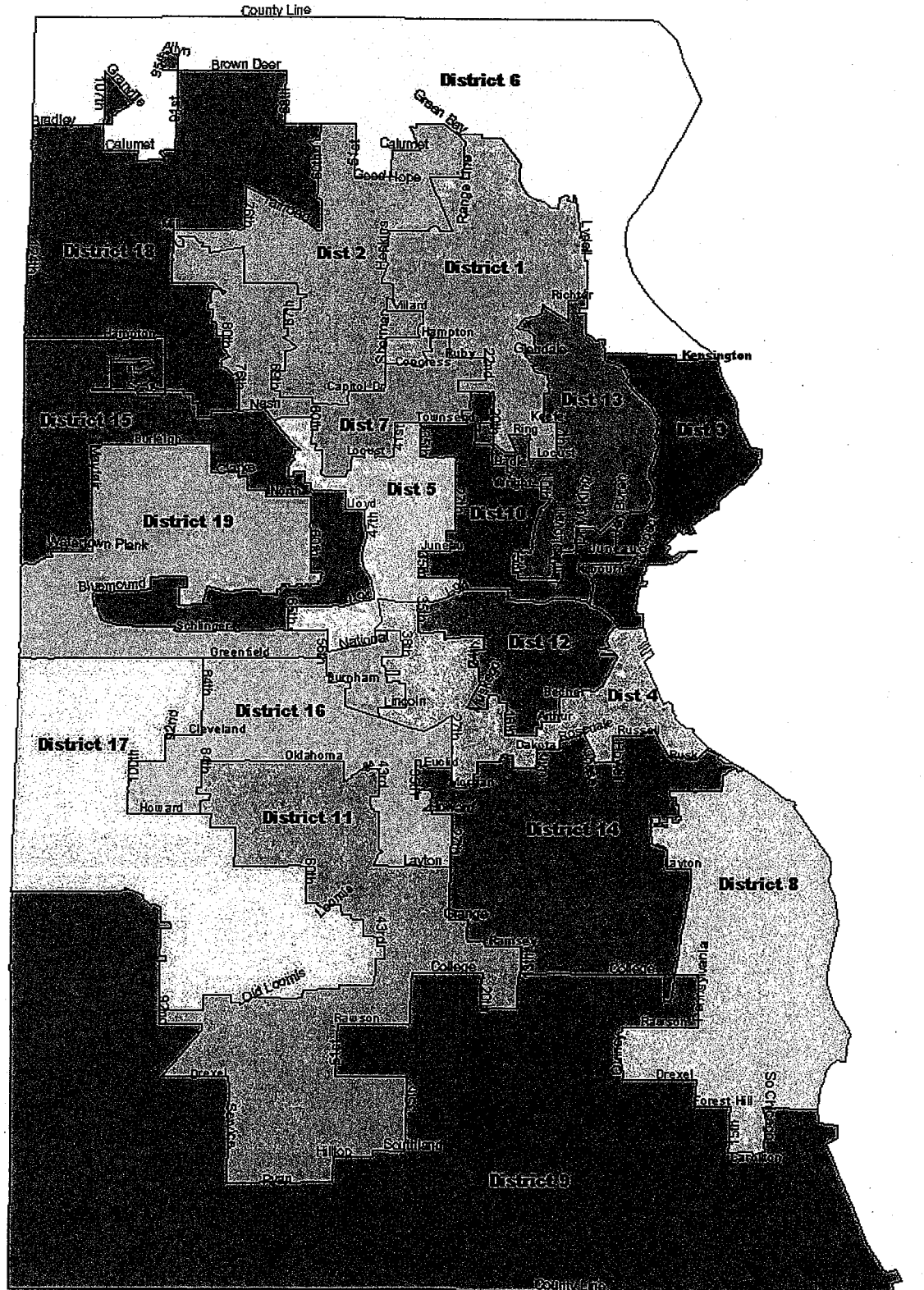
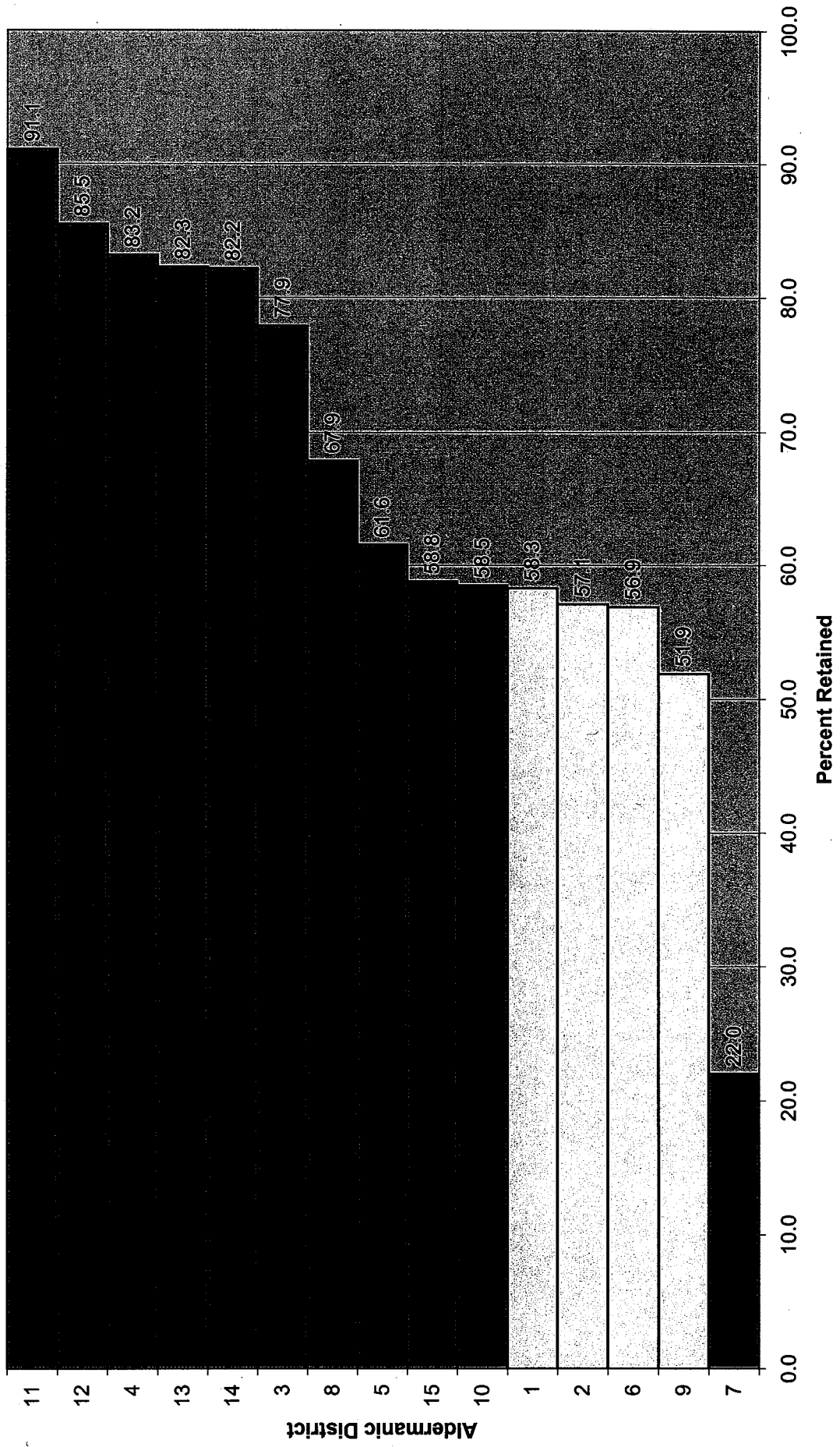


# County Board Adopted for 2004 (19 Districts)



# POPULATION RETAINED FROM 1992-2004 DISTRICT IN NEW (2004) DISTRICT



**POPULATION OF PORTION OF NEW 7TH DISTRICT  
FORMERLY IN 7TH OR 10TH DISTRICT**

	Number	Percent
Former 10th Dist. Portion	18,542	67
Former 7th Dist. Portion	8,949	33

# WARDS IN PORTION OF NEW 7TH DISTRICT FORMERLY IN 7TH OR 10TH DISTRICT

	Number	Percent
Wards in Former 10th District	9	69
Wards in Former 7th District	4	31