

S.W. 1/4 SEC. 9, T.7N., R.22E.

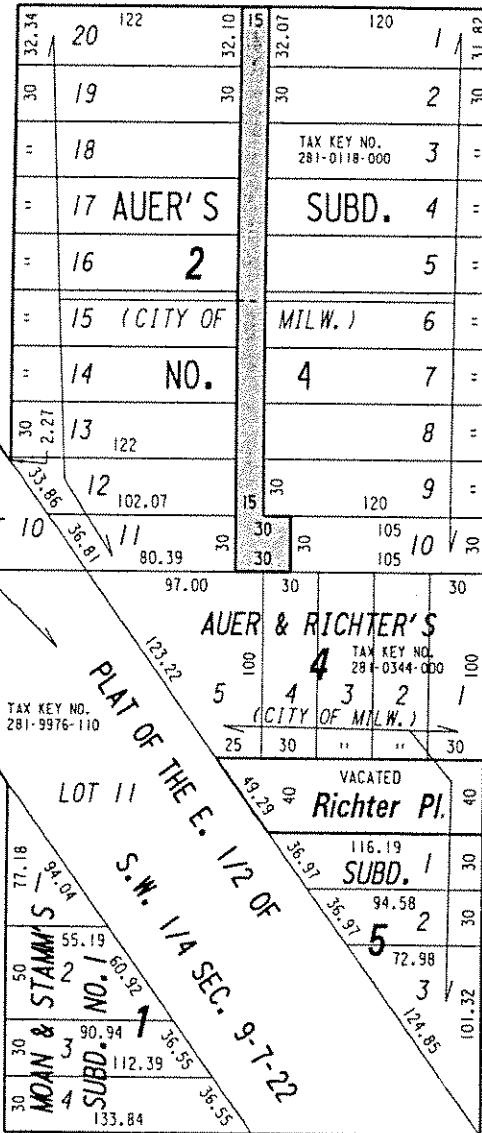
281

(60' R.O.W.)

E. Concordia Ave.

St.

(70' R.O.W.)



St.

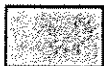
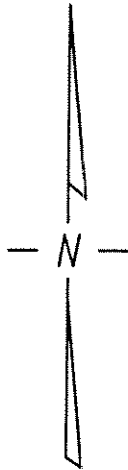
(70' R.O.W.)

N. Pierce

N. Fratney

E. Auer Ave.

(60' R.O.W.)



PUBLIC ALLEY PROPOSED TO BE VACATED

EXHIBIT "A"
FILE NO. 041227
INFRASTRUCTURE SERVICES DIVISION
MILWAUKEE, WISCONSIN

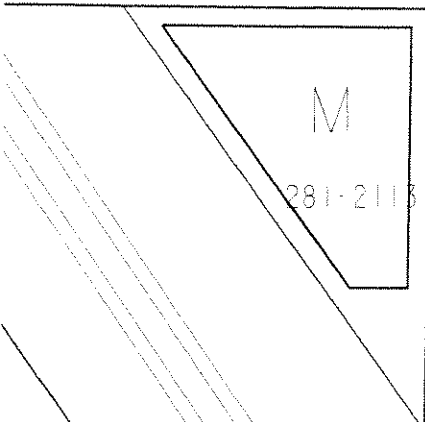
ASSIGNED TO: W.E. FUCHS
DRAWN BY: W.E.F.
PROJECT/GRANT NO.: WK52337203
APPROVED BY:

CH'K'D. BY: W.E. FUCHS
DATE: FEB 11, 2005
SCALE: 1" = 80'

marisa kindholm
CENTRAL DRAFTING & RECORDS MANAGER

City Engineer

E. CONCORDIA

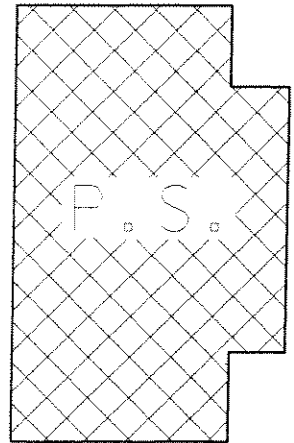


3275

281-0118

FRATNEY

STREET



327
327
327
326
326
326
325
325
324
324
323
323

281-9976-110-4

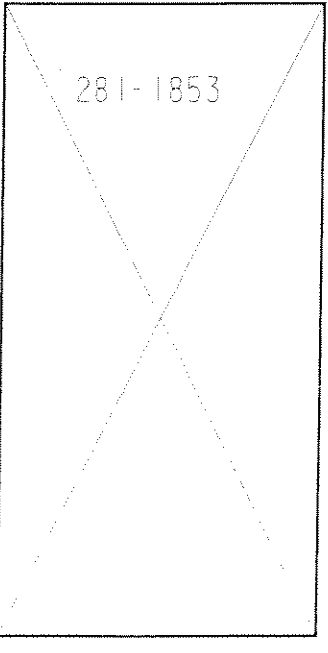
ELEMENTARY
SCHOOL

3255

3237

N. FRATNEY

323
322
322



281-1853

3225

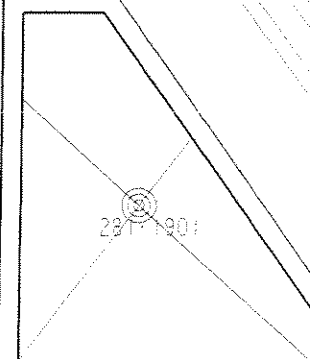
P.G.

281-0344

3201

N. PIERCE

3218



281-1901

E. AUER

7

719

723