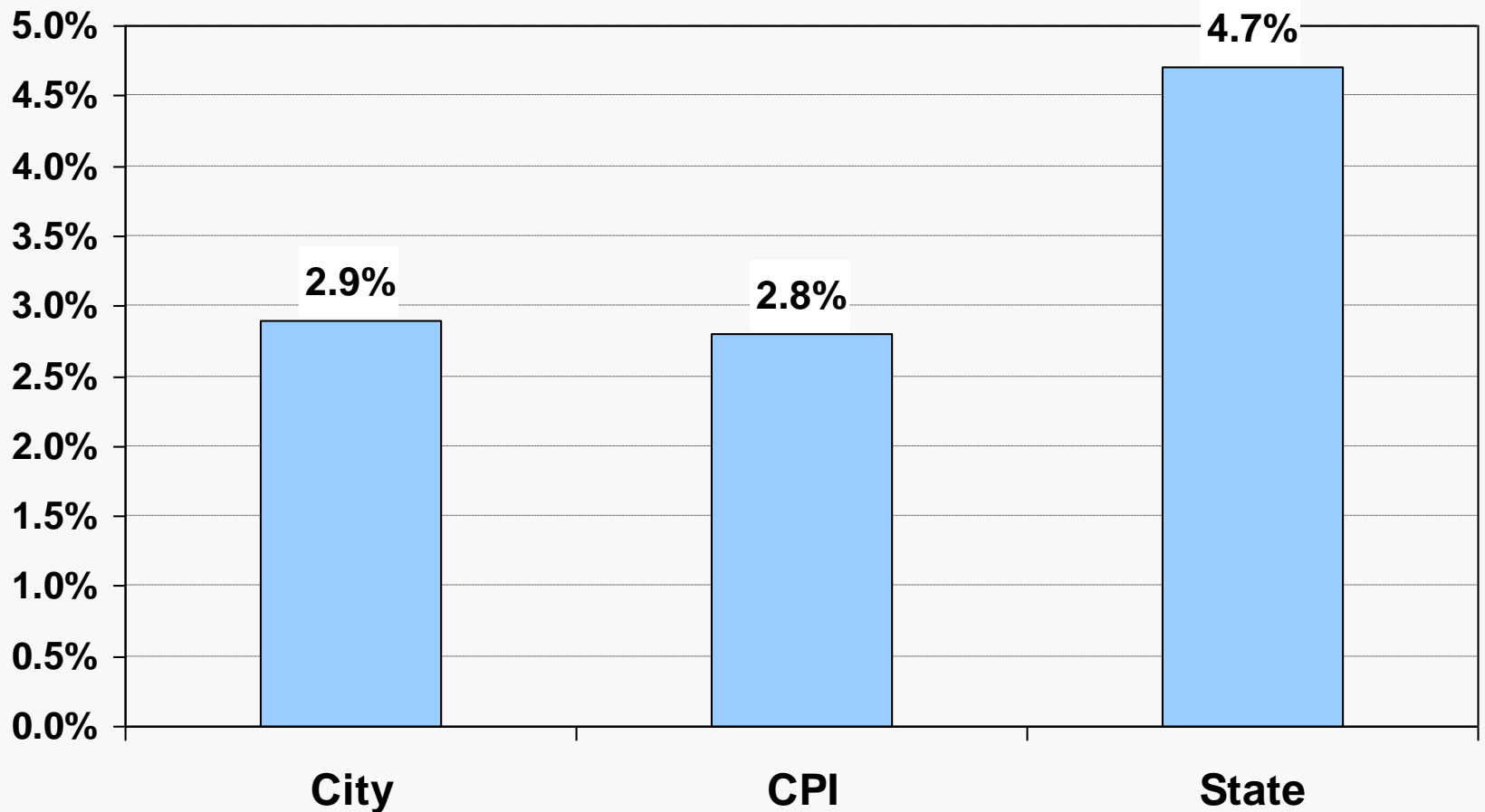
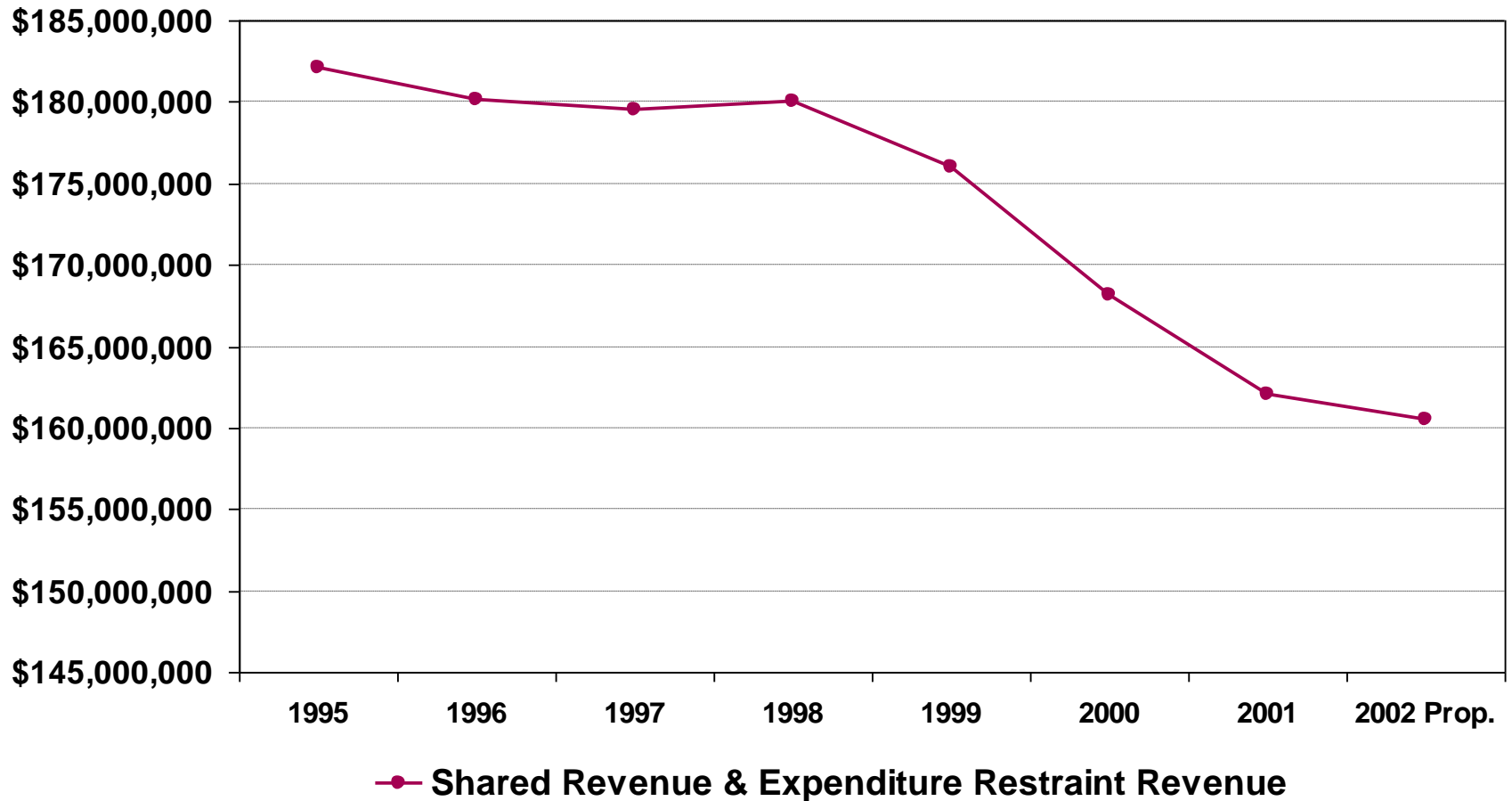


1994 – 2002 Growth in Expenditures City v. State of Wisconsin

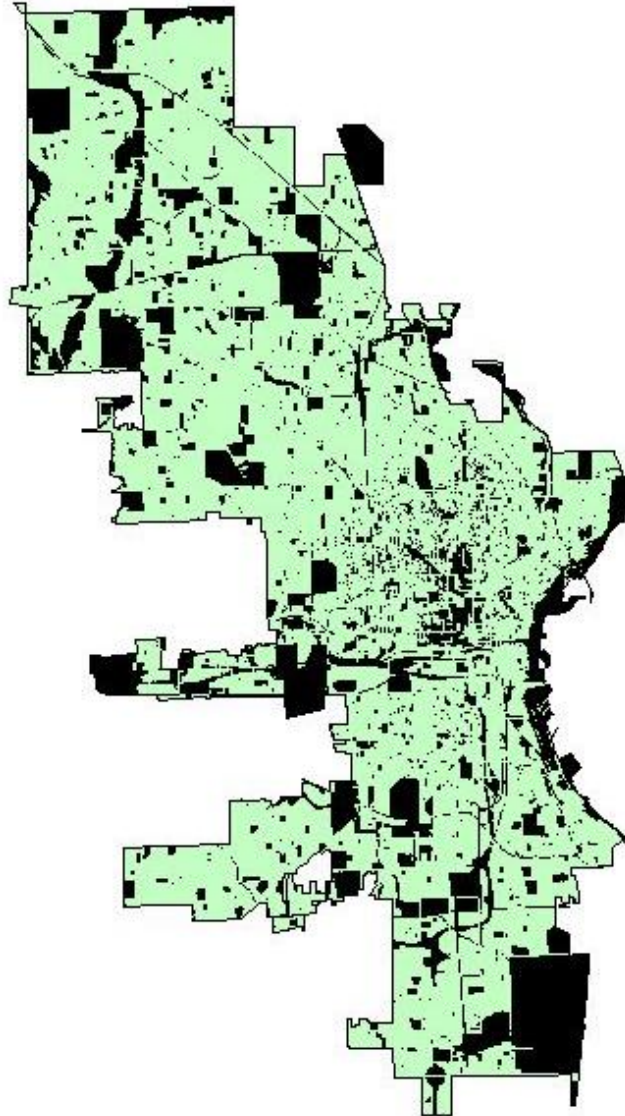


Real Growth of Intergovt. Revenue 1995 - 2002 Proposed



City of Milwaukee Tax Exempt Properties

33% of Total City Square Footage



Growth in Residential Properties as a Percent of the Tax Base vs. Growth in All Other Property Categories

