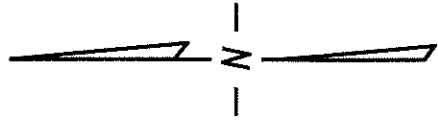
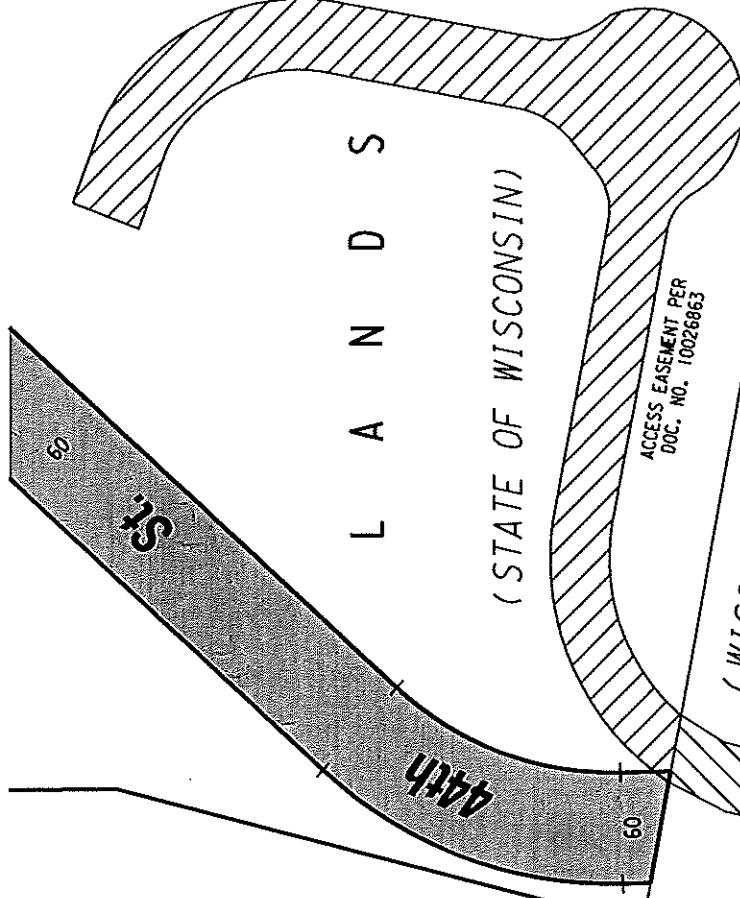


N.E. 1/4 SEC. 35, T.7N., R.21E.

422



Way



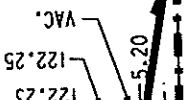
100

(WISC. DEPT. OF NAT. RESOURCES)

ACCESS EASEMENT PER  
DOC. NO. 10026865

102.14

100



14 (HARNISCHFEGGER CORP.)  
ASSESSOR'S

CITY OF MILWAUKEE LIMITS  
VILLAGE OF WEST MILWAUKEE LIMITS

1/4 SEC. LINE

S  
L  
A  
N  
D  
S

09 S. Harnischfeger  
VACATED

14

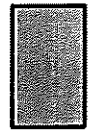
1

Miller Park

PLAT NO. 290

437

S.E. 1/4 SEC. 35, T.7N., R.21E.



PUBLIC STREET  
PROPOSED TO  
BE VACATED



LAND REVERSION  
AFTER VACATION