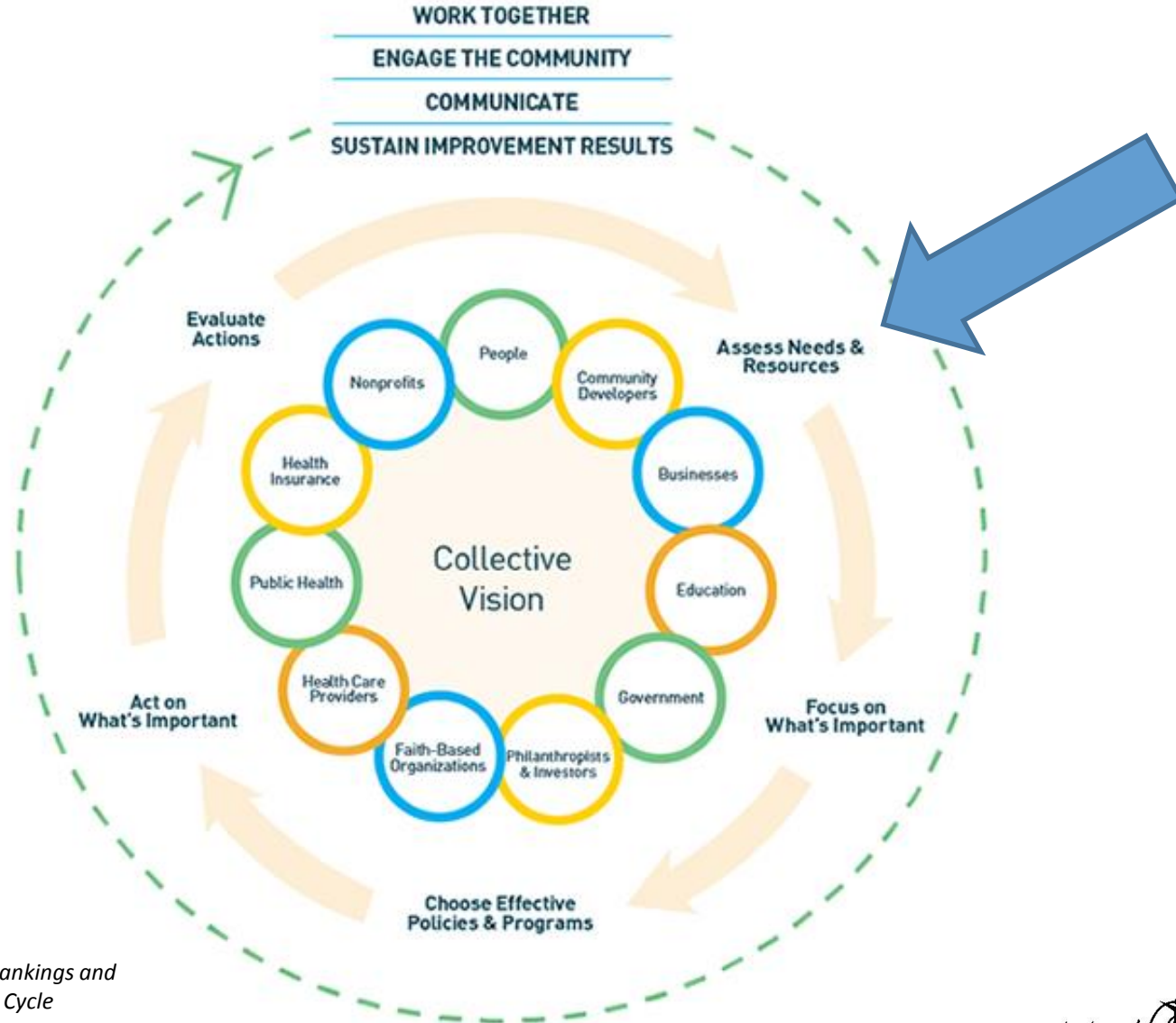


2015-2016 City of Milwaukee Community Health Assessment



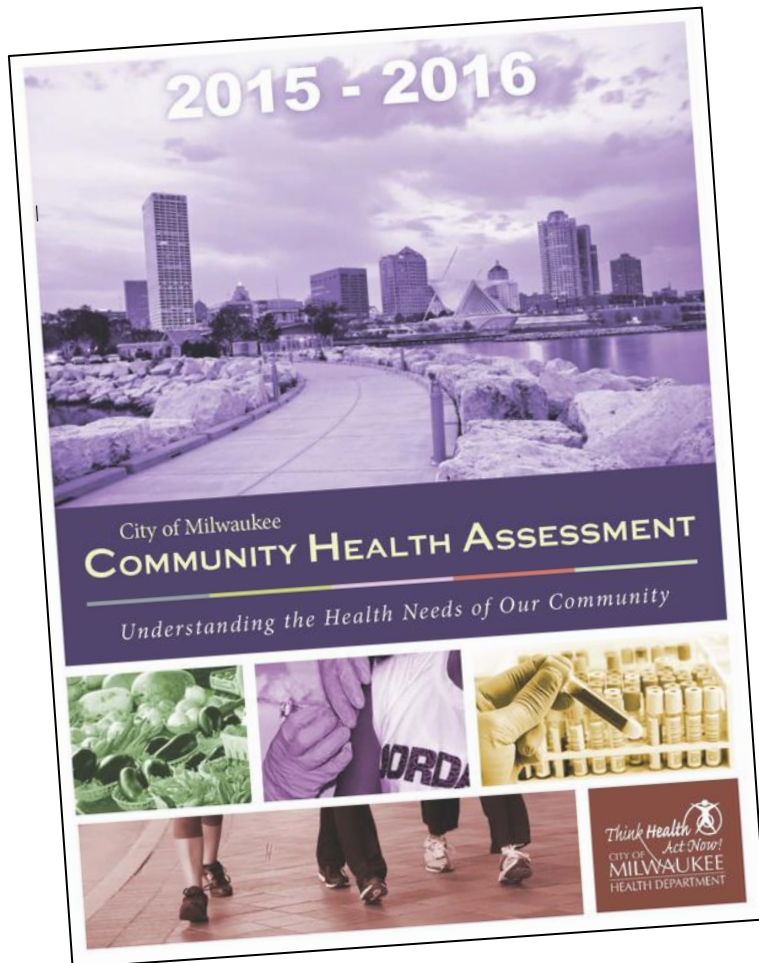
Bevan K. Baker, FACHE
Commissioner of Health
April 7, 2016

COMMUNITY HEALTH IMPROVEMENT PROCESS



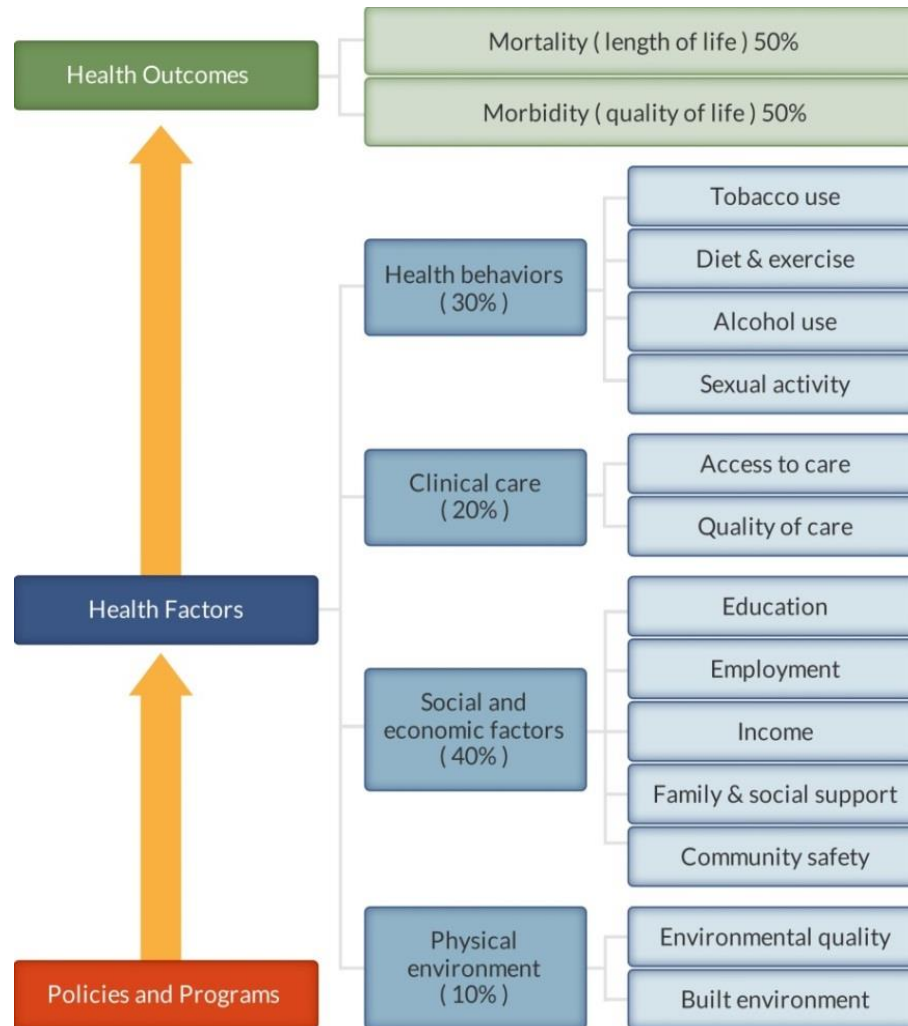
Source: County Health Rankings and Roadmaps Action Cycle

City of Milwaukee Community Health Assessment



- Phone survey of 1,000+ city residents
- 41 key informant interviews
- 4 focus groups
- 1 community stakeholder meeting
- Primary data
- Secondary data

What Makes a Community Healthy?



County Health Rankings model ©2012 UWPHI



Health Outcomes / Indicators

- More than 100 measures in 21 core variables
- Status: Data compared to State, National, and nationwide Healthy People 2020 goals
- Trend: Based upon local data

Infant Mortality Rate per 1,000 Live Births, City of Milwaukee

2003-2005	2006-2008	2009-2011	2012-2014	WI	US	HP 2020	Status	Trend
11.6	10.9	10.1	9.9	5.7	6.0	6.0		

Youth Tobacco Use: Smoked Cigarettes on at Least 1 day During Past 30 days, City of Milwaukee

2007	2009	2011	2013	WI	US	HP 2020	Status	Trend
12.3%	10.5%	10.4%	8.6%	11.8%	15.7%	16%		

Health Priorities: Three Perspectives

Community-Identified Issues (See Appendix B)

- Alcohol and Drug Use
- Chronic Disease
- Mental Health
- Violence

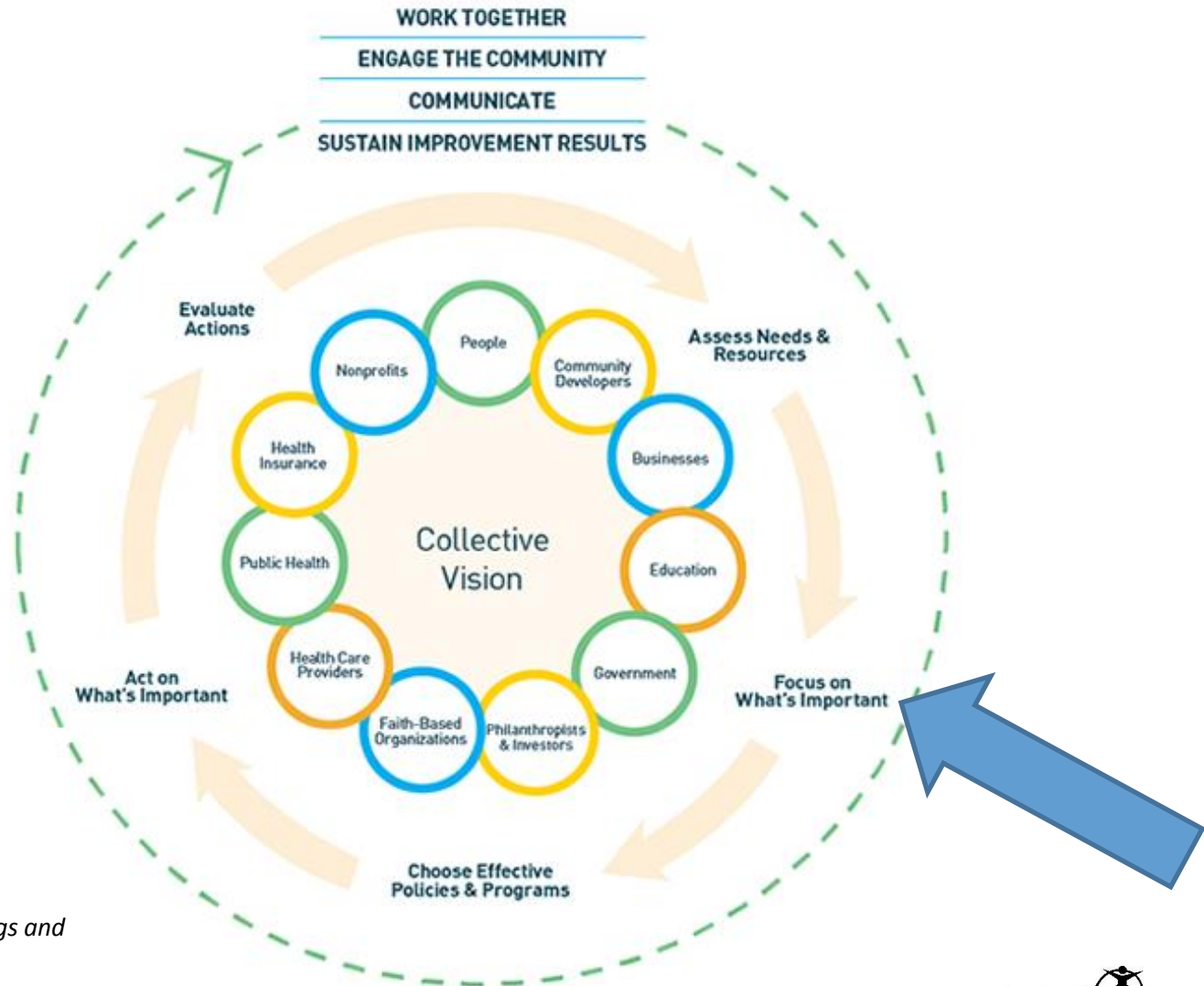
MHD-Identified Issues (See Appendix C)

- Childhood Lead Poisoning Prevention
- Healthy Birth Outcomes:
 - Infant Mortality
 - Low Birthweight
 - Pre-term Birth
 - Stillbirth
- Sexually Transmitted Diseases
- Teen Pregnancy Prevention

Nationally Identified Issues (See Appendix D)

- Air Pollution
- Alcohol Use
- Chronic Disease
- Education
- Employment
- Housing
- Infant Mortality
- Mental Health
- Obesity
- Poverty
- Sexually Transmitted Diseases
- Teen Pregnancy
- Uninsured
- Unintentional Injury
- Violence

Our Next Steps



Source: County Health Rankings and Roadmaps Action Cycle



Tom Barrett, Mayor

Bevan K. Baker,
Commissioner of Health

www.milwaukee.gov/health

Bevan K. Baker, FACHE
Commissioner of Health
April 7, 2016