



City of Milwaukee

Daten elm 3 1/2 feet

from sewer line +

8 feet from orange dot
or end of collapsed

pipe

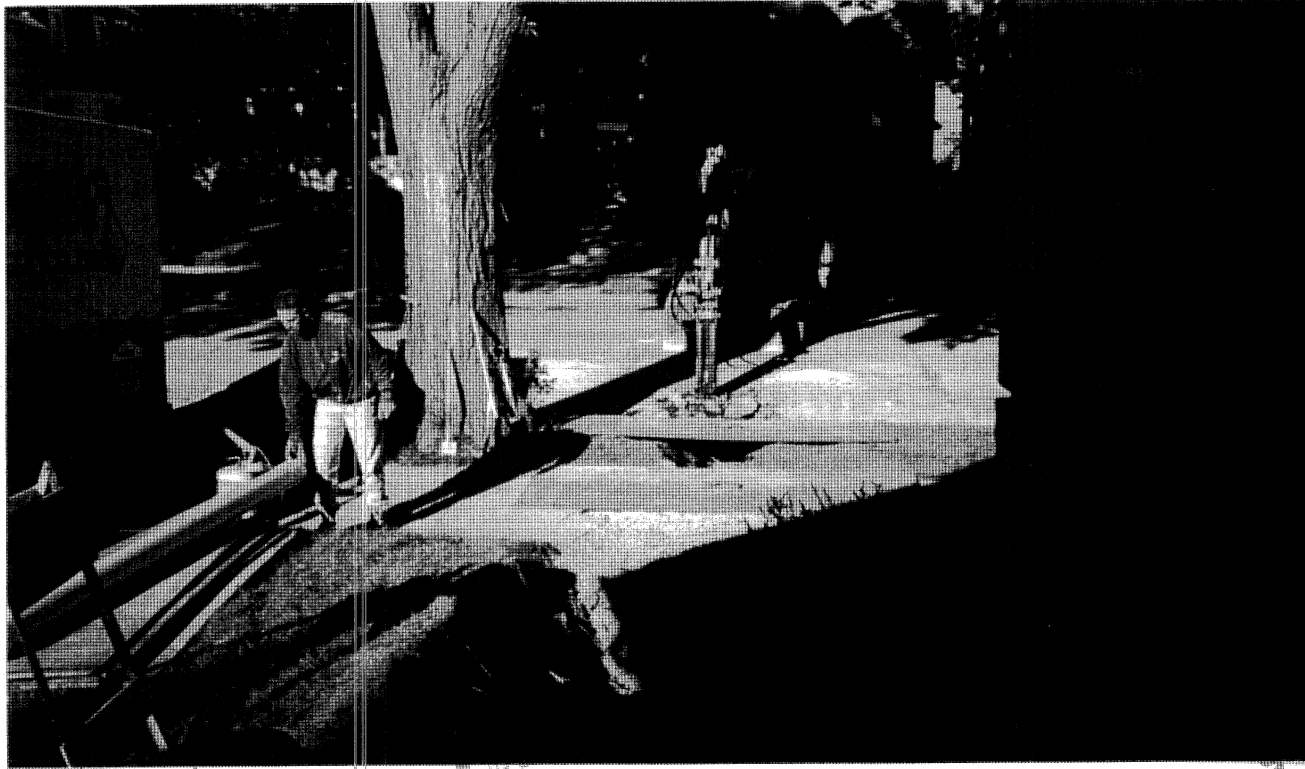
10858-178 < 6 > SPK

SEP/03

Kodak

Kodak

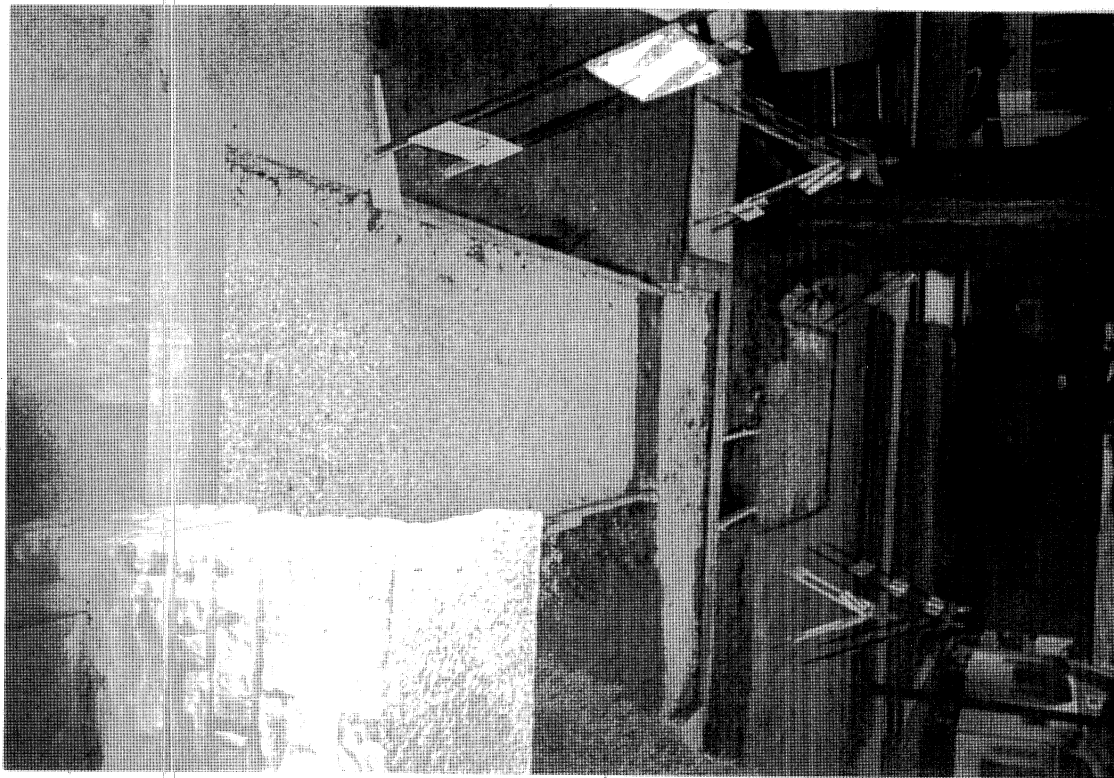
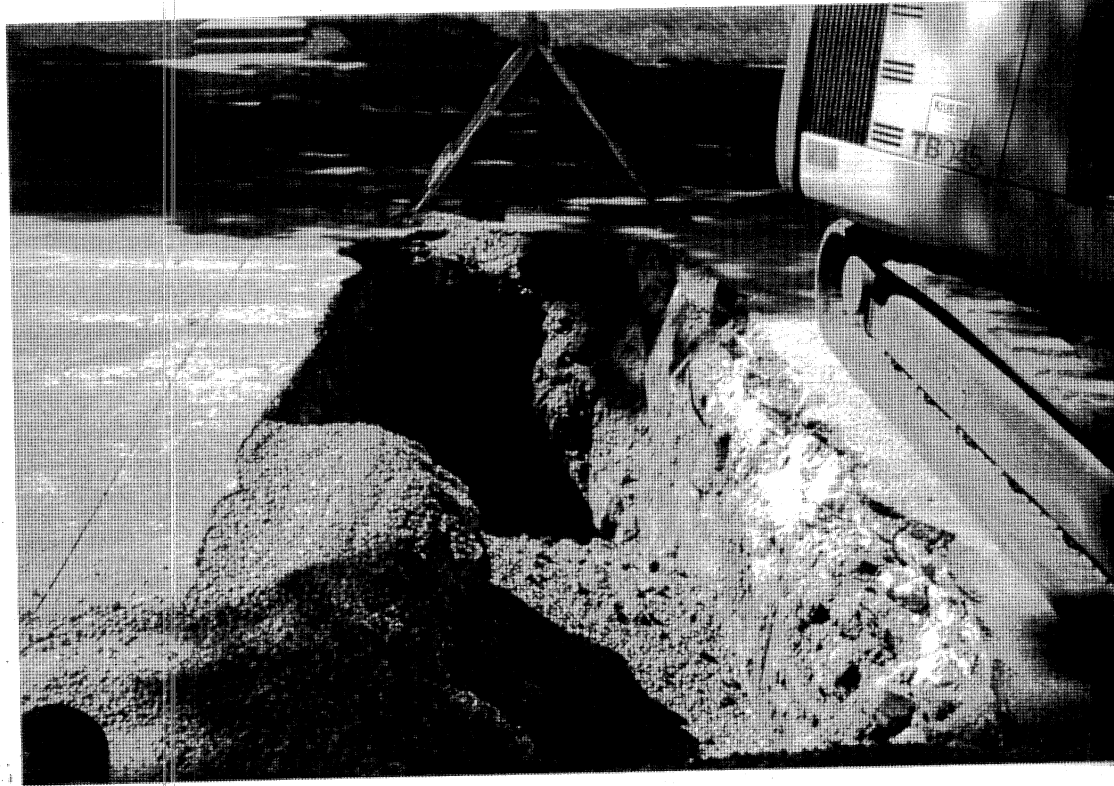




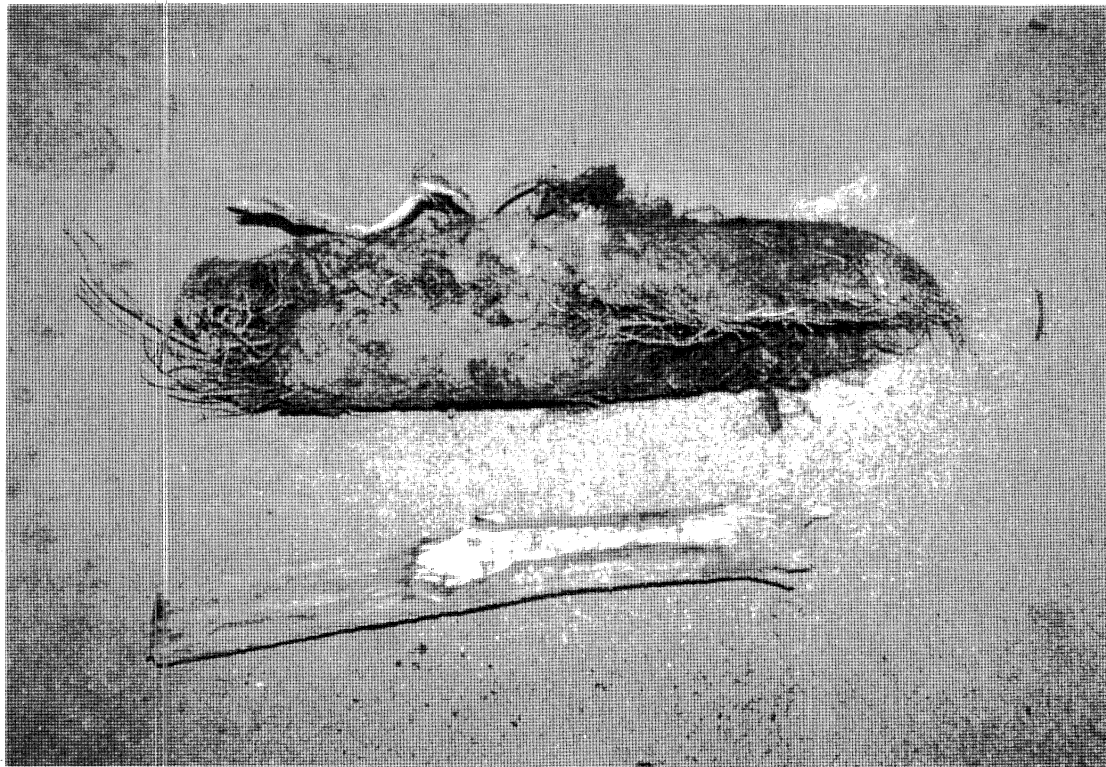
Sidewalk and street excavated
for repairs

ID838-178 (14) SPK

SEP/81







3 in root found

running along clay
pipe under ~~over~~

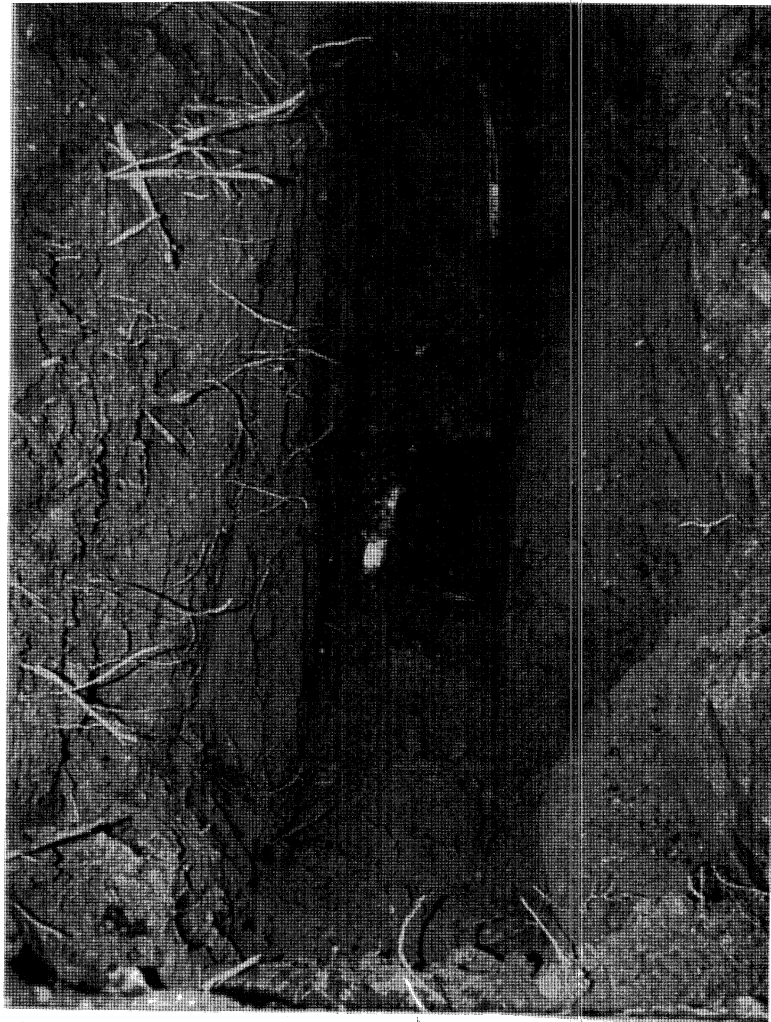
owner's sidewalk

SEP 88 10638-178 <25> SPK

6 inch root found

over clay pipe under

city sidewalk



Kodak
1D558-178 <K> SPK

clay pipe

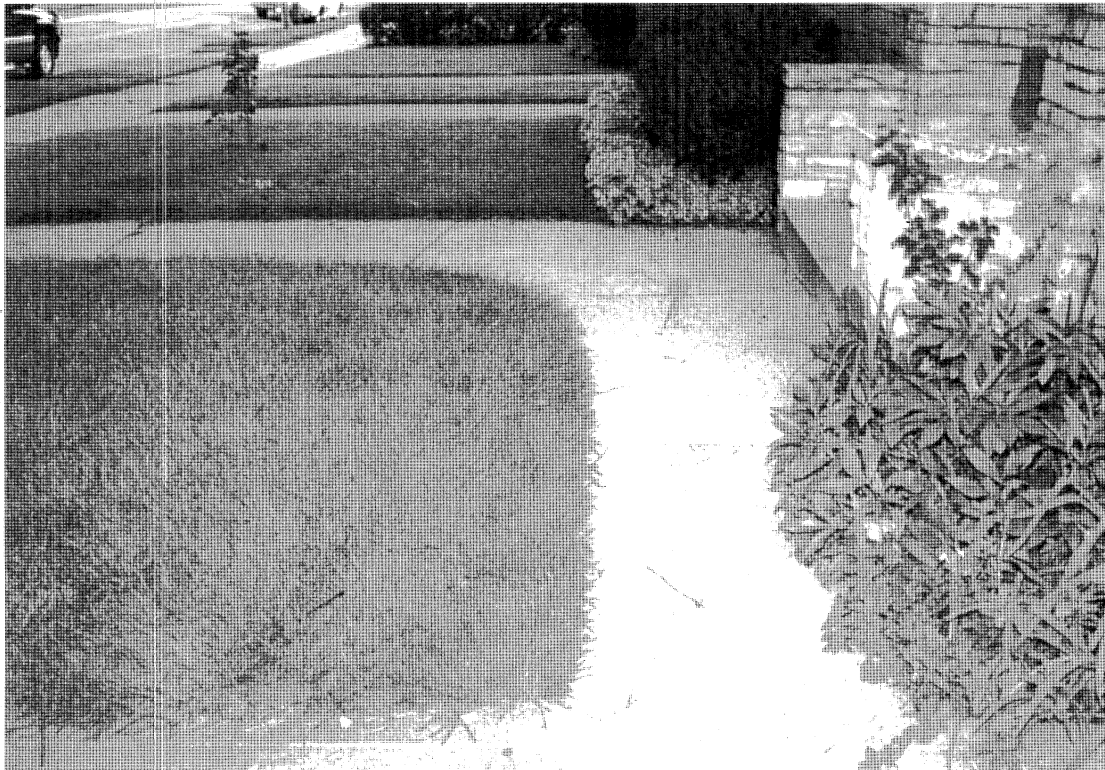
3 inch roof
running alongside

Kodak

SEP-68



END OF Collapsed Pipe





New PVC pipe had
to be rerouted to prevent
damage to tree
root per city of Milwaukee

SEP/88 0858-178 (24) SPK

Duralife

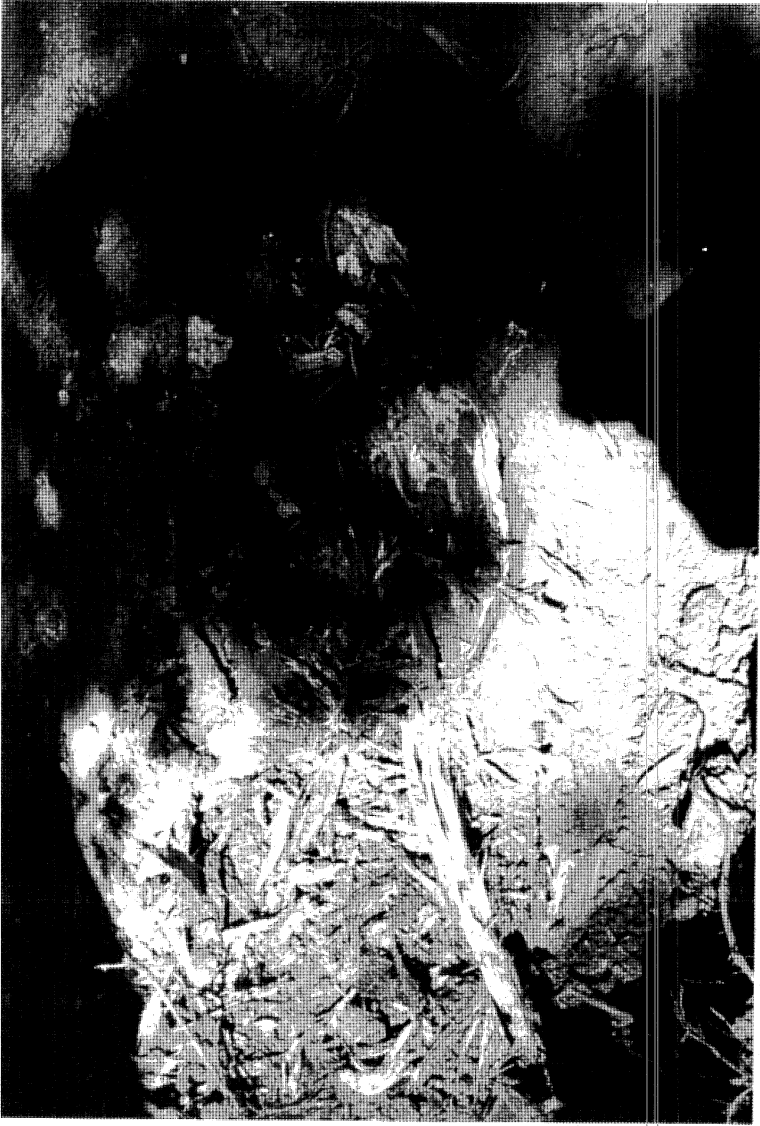
Duralife



Orange dot end of
collapsed pipe from
owner's end - rest of pipe
collapsed out from
orange dot &

City of Milwaukee
Dutch elm

App 36 inch bare & over 60 ft
in height



SECRET

Kodak

Truck, sidewalk +
rb excavated for
repair

SECRET