



MILWAUKEE
HISTORIC
PRESERVATION
COMMISSION

LIVING WITH HISTORY

Certificate of Appropriateness

Milwaukee Historic Preservation Commission/200 E. Wells Street/Milwaukee, WI 53202/phone 414-286-5712/fax 414-286-3004

Property 1036 W. JUNEAU AV. Pabst Brewery Historic District

Description of work Applicant is to install signage for SafeNet Consulting on the existing monument sign located in front of the Pabst Professional Center. The new sign will match the brushed aluminum letters of the Pabst Professional Center name but in a smaller font. The new sign will match the company's logo (SafeNet).

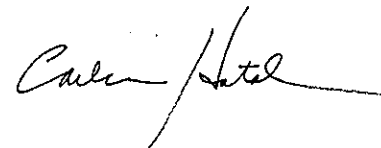
Date issued 2/23/2016 PTS ID 108951 COA signage SafeNet Consulting

In accordance with the provisions of Section 320-21 (11) and (12) of the Milwaukee Code of Ordinances, the Milwaukee Historic Preservation Commission has issued a certificate of appropriateness for the work listed above. The work was found to be consistent with preservation guidelines. The following conditions apply to this certificate of appropriateness:

The letters will be 1/4 inch thick brushed finish aluminum letters, mounted on studs, projecting from the slat wall of the monumnet sign. It will measure 28-3/4 inches by 11-1/2 inches and be positioned below the TCF commercial banking sign.

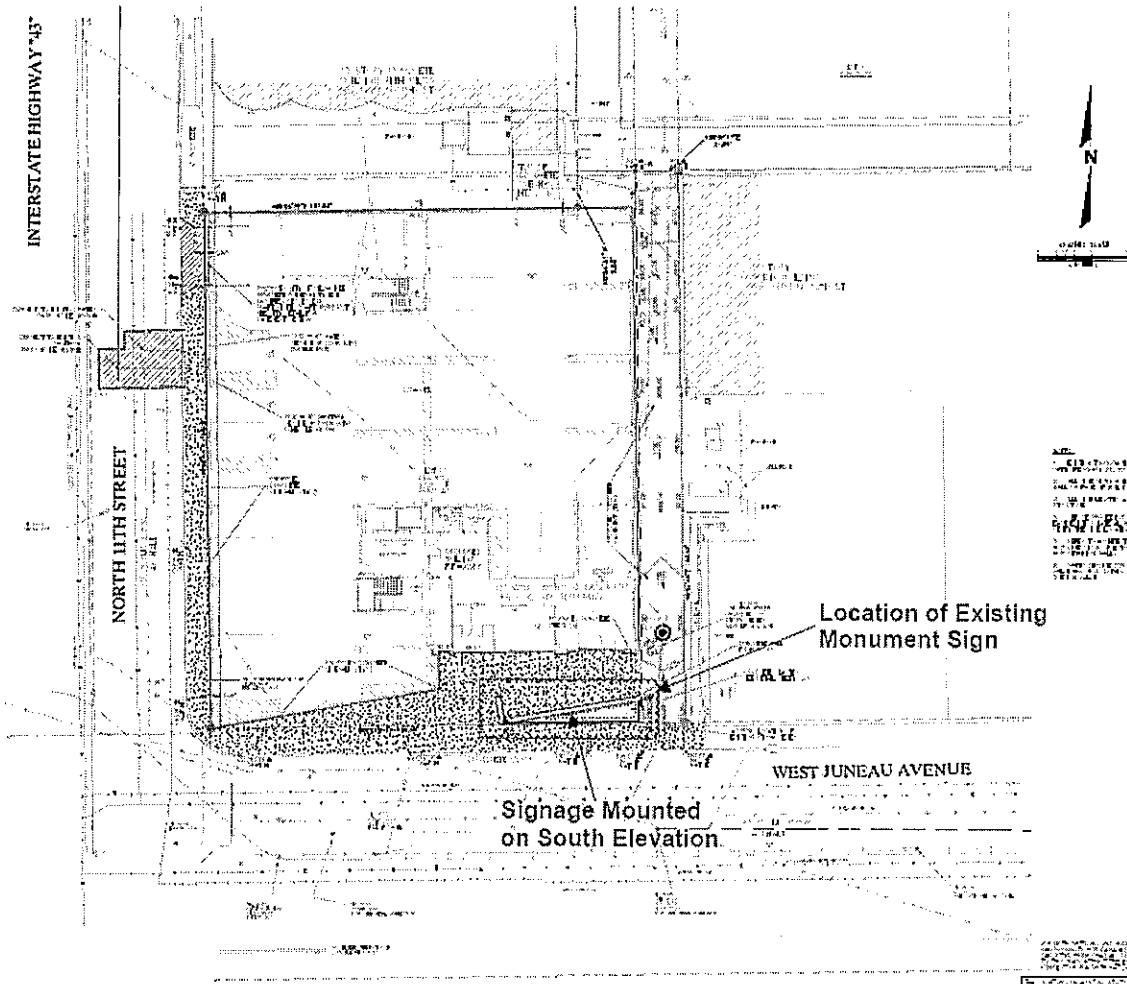
All work must be done in a craftsman-like manner, and must be completed within one year of the date this certificate was issued. Staff must approve any changes or additions to this certificate before work begins. Work that is not completed in accordance with this certificate may be subject to correction orders or citations. If you require technical assistance, please contact Carlen Hatala of the Historic Preservation staff as follows: Phone: (414) 286-5722 Fax: (414) 286-3004 E-mail: carlen.hatala@milwaukee.gov.

If permits are required, you are responsible for obtaining them from the Milwaukee Development Center. If you have questions about permit requirements, please consult the Development Center's web site, www.milwaukee.gov/build, or call (414) 286-8210.

A handwritten signature in cursive script, appearing to read "Calvin Hotel", written in black ink.

City of Milwaukee Historic Preservation Staff

Copies to: Development Center, Ald. Robert Bauman, Contractor , Inspector Peter Schwartz (286-2537)



Monument sign is located on Juneau Avenue

**NOTE FROM RILEY CONSTRUCTION:
PROPOSED SIGN LOCATION
(Per BRM's request in 1/26/16 email)**



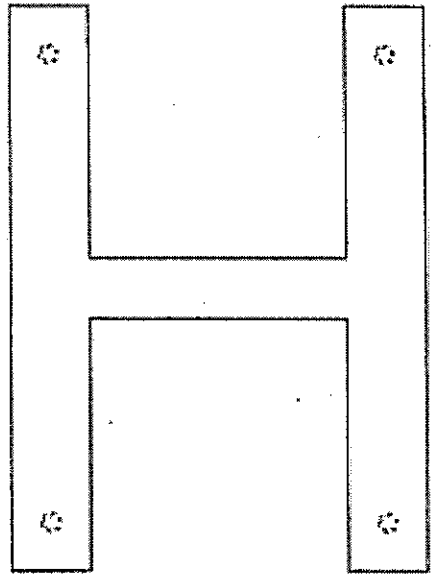
FIELD VERIFY REQUIRED TO DETERMINE EXACT STUD PLACEMENT



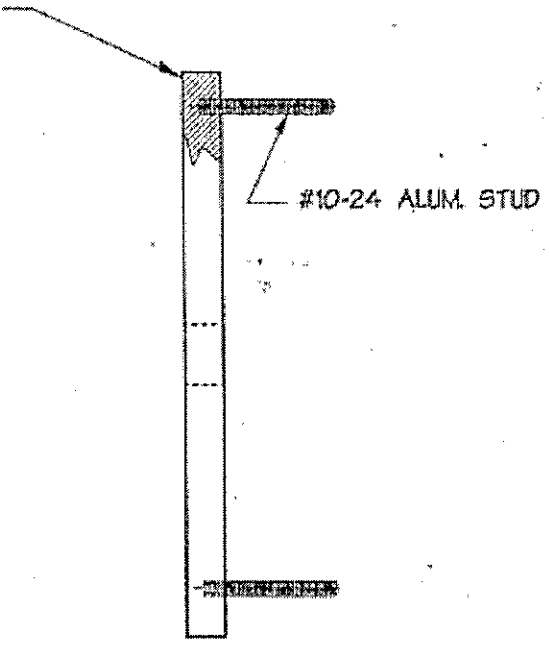


FLAT CUT OUT ALUMINUM LETTER FLUSH MOUNTED

1/4" THK ALUM. FLAT CUT OUT LETTER



FACE VIEW



SIDE VIEW