



Certificate of Appropriateness

Milwaukee Historic Preservation Commission/200 E. Wells Street/Milwaukee, WI 53202/phone 414-286-5712/fax 414-286-3004

Property 2636 N. Downer Ave. North Downer Commercial
Description of work Install aluminum panels and lit channel letters above the storefront and second surface vinyl on the storefront windows and door.
Date issued 6/13/2019 PTS ID 114788 COA: vinyl and aluminum signage

In accordance with the provisions of Section 320-21 (11) and (12) of the Milwaukee Code of Ordinances, the Milwaukee Historic Preservation Commission has issued a certificate of appropriateness for the work listed above. The work was found to be consistent with preservation guidelines. The following conditions apply to this certificate of appropriateness:

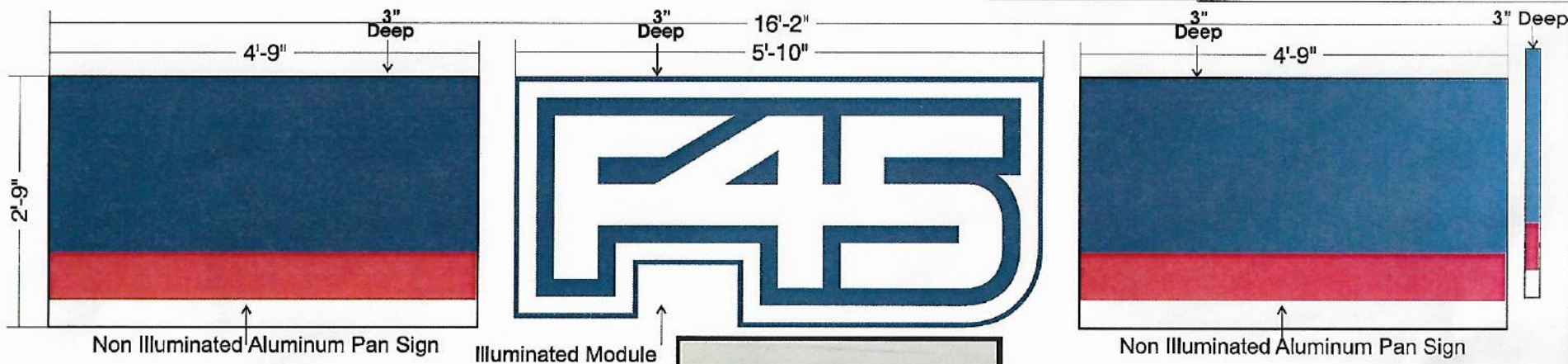
Sign must meet all aspects of LB2 zoning requirements. Reductions in size are permitted without further review.

All work must be done in a craftsman-like manner, and must be completed within one year of the date this certificate was issued. Staff must approve any changes or additions to this certificate before work begins. Work that is not completed in accordance with this certificate may be subject to correction orders or citations. If you require technical assistance, please contact Historic Preservation staff as follows: Phone: (414) 286-5712 E-mail: hpc@milwaukee.gov.

If permits are required, you are responsible for obtaining them from the Milwaukee Development Center. If you have questions about permit requirements, please consult the Development Center's web site, www.milwaukee.gov/build, or call (414) 286-8210.

City of Milwaukee Historic Preservation Staff

Copies to: Development Center, Ald. Nik Kovac

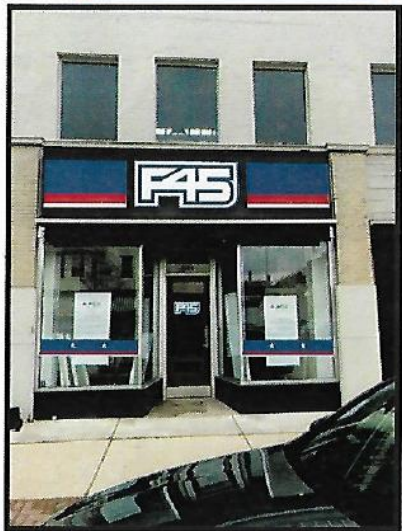


SPECIFICATIONS

FABRICATE (1) INTERNALLY ILLUMINATED SINGLE FACE MODULE & 2 NON ILLUMINATED ALUMINUM PAN SHAPED SIGN.

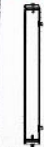
MODULE

- **FACES TO BE WHITE POLYCARBONATE**
- **RETURNS TO BE .050X3" AND BACKS TO BE .050 ALUMINUM**
- **TRIMCAPS TO BE 1" DARK BLUE**
- **EXTERIORS TO BE DARK BLUE**
- **INTERIORS TO BE WHITE**
- **GRAPHICS TO BE 3M TRANSLUCENT BLUE 3630-36 & POPPY RED 3630-143**
- **ILLUMINATED WITH WHITE LEDs**
- **POWERED WITH APPROPRIATE LOAD POWER SUPPLIES**
- **MOUNTING TO BE DIRECT MOUNTED**



PAN SIGNAGE

- **FACES AND RETURNS TO .125 ALUMINUM PAINTED WHITE, POPPY RED 3630-143 & BLUE 3630-36**
- **MOUNTING TO BE DIRECT MOUNT**



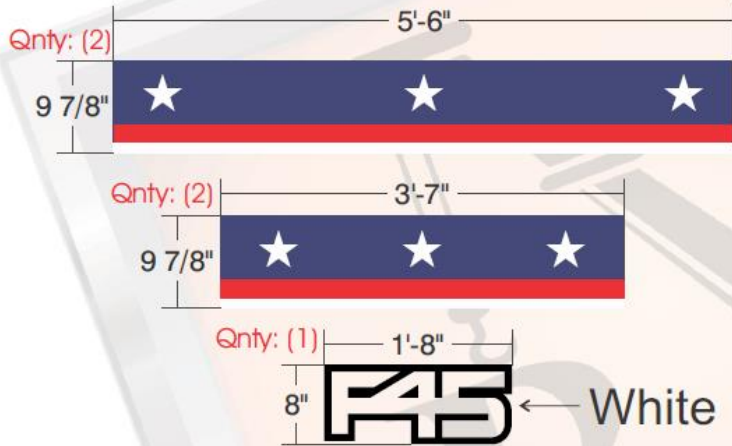
WINDOW GRAPHICS

TO BE OPAQUE VINYL OVERLAY

Aluminum and lit channel sign specifications, located above storefront



Rendering indicating the nature of the halo illumination sign at night



SPECIFICATIONS
FABRICATE AND INSTALL WINDOW AND DOOR VINYL

- **GRAPHICS** TO BE 3M OPAQUE WHITE, LIGHT NAVY 7725-197 & TOMATORED 3630-13
- **APPLICATION** TO BE SECOND SURFACE

F45
Window & Door Vinyl

Window and door vinyl specifications



Rendering indicating the nature of the complete installation of proposed signage