

( MAP 1 OF 2 )

EXHIBIT "A"

FILE NO. 151445

INFRASTRUCTURE SERVICES DIVISION

MILWAUKEE, WISCONSIN

ASSIGNED TO: W. FUCHS

CH'K'D. BY: W. FUCHS

DRAWN BY: W.F.

DATE: JAN. 25, 2016

PROJECT/GRANT NO.: WK52337379

SCALE: 1" = 60'

APPROVED BY:

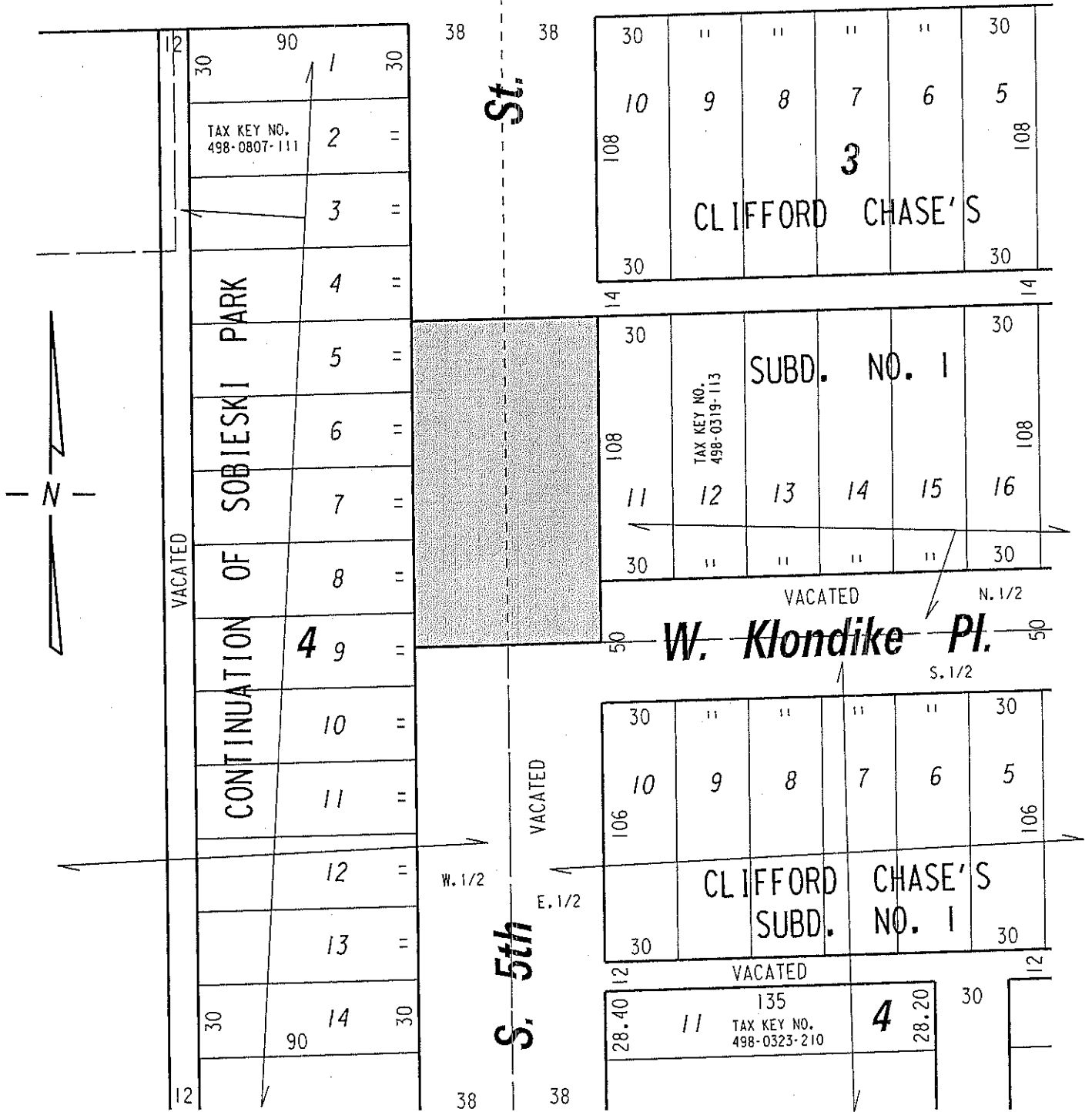
  
 CENTRAL DRAFTING & RECORDS MANAGER

  
 CITY ENGINEER

W. Harrison

(60' R.O.W.)

Ave.



( MAP 2 OF 2 )

EXHIBIT "A"

FILE NO. 151445

INFRASTRUCTURE SERVICES DIVISION

MILWAUKEE, WISCONSIN

ASSIGNED TO: W. FUCHS

CH'K'D. BY: W. FUCHS

DRAWN BY: W.F.

DATE: JAN. 25, 2016

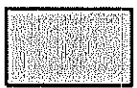
PROJECT/GRANT NO.: WK52337379

SCALE: 1" = 60'

APPROVED BY:

*[Signature]*  
CENTRAL DRAFTING & RECORDS MANAGER

*[Signature]*  
CITY ENGINEER

 PORTION OF PUBLIC STREET PROPOSED TO BE VACATED