

240 N. Milwaukee Street
Suite #400
Milwaukee, WI 53202

(414) 276.8550
deep-river.com

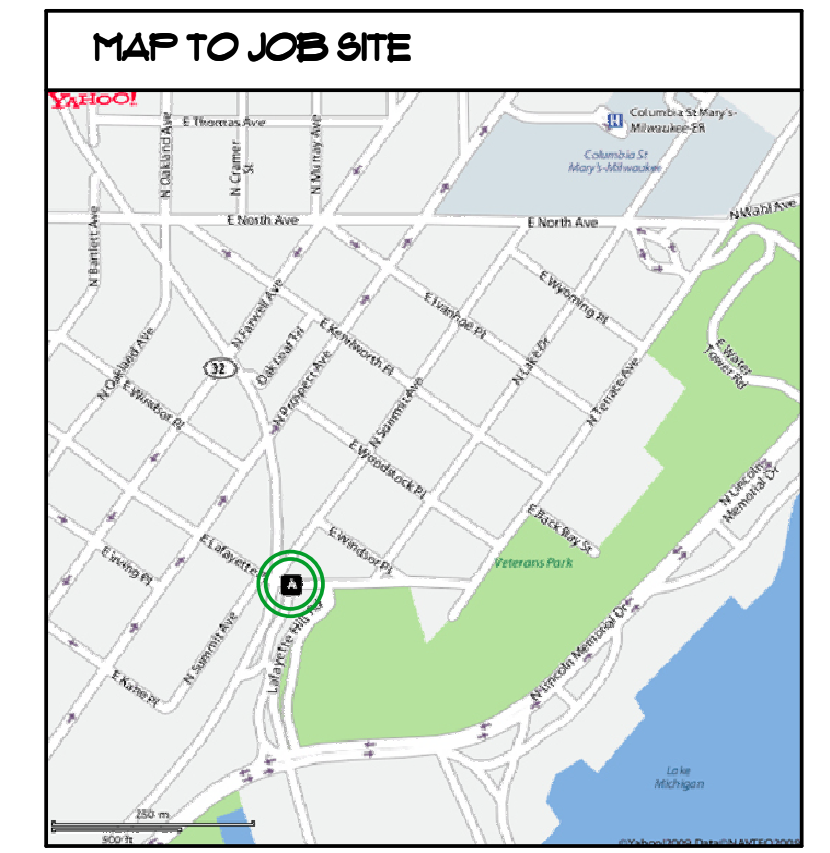
NOTE:
ALTHOUGH EVERY EFFORT HAS BEEN MADE IN PREPARING THESE CONTRACT DOCUMENTS AND CHECKING THEM FOR ACCURACY, THE CONTRACTORS MUST CHECK ALL DETAILS AND DIMENSIONS AND BE RESPONSIBLE FOR SAME. THE CONTRACTORS SHALL BE RESPONSIBLE FOR MAKING SURE THAT ALL WORK IS DONE IN ACCORDANCE WITH ALL STATE AND LOCAL CODES. THE CONTRACT DOCUMENTS UTILIZE A PROCESS CALLED FREE DESIGN OR DESIGN/BUILD FOR ROOF, WINDOW, PLUMBING, ELECTRICAL, HVAC DETAILS, AND AS DESIGNATED IN THE SPECIFICATION AS TO BE COMPLETED ON A DESIGN/BUILD BASIS. THIS MEANS THAT THE CONTRACT DOCUMENTS DO NOT INCLUDE ALL REQUIRED DETAILS, AND THAT THE CONTRACTORS SHALL, USING THEIR OWN STAFF OR QUALIFIED SUBCONTRACTORS, DESIGN AND BUILD THE FREE DESIGN AND DESIGN/BUILD PORTIONS OF THE WORK. THE CLIENT IS DIRECTLY CONTRACTING WITH THE CONTRACTORS AND THEREFORE THE CLIENT AND THE CONTRACTORS ARE ASSUMING THE DESIGN AND BUILD RESPONSIBILITY FOR THE FREE DESIGN AND DESIGN/BUILD PORTIONS OF THE PROJECT. DEEP RIVER PARTNERS, LTD. IS NOT RESPONSIBLE FOR INSPECTING ANY ASPECT OF THE CONTRACTORS WORK, OR FOR OBSERVATION OF THE CONTRACTORS WORK FOR COMPLIANCE WITH THE CONTRACT DOCUMENTS.

SHEET INDEX

C1.1	SITE PLAN
A1.1	1/4 FLOOR PLANS
A4.1	EXTERIOR ELEVATIONS
A5.1	EXTERIOR DETAILS

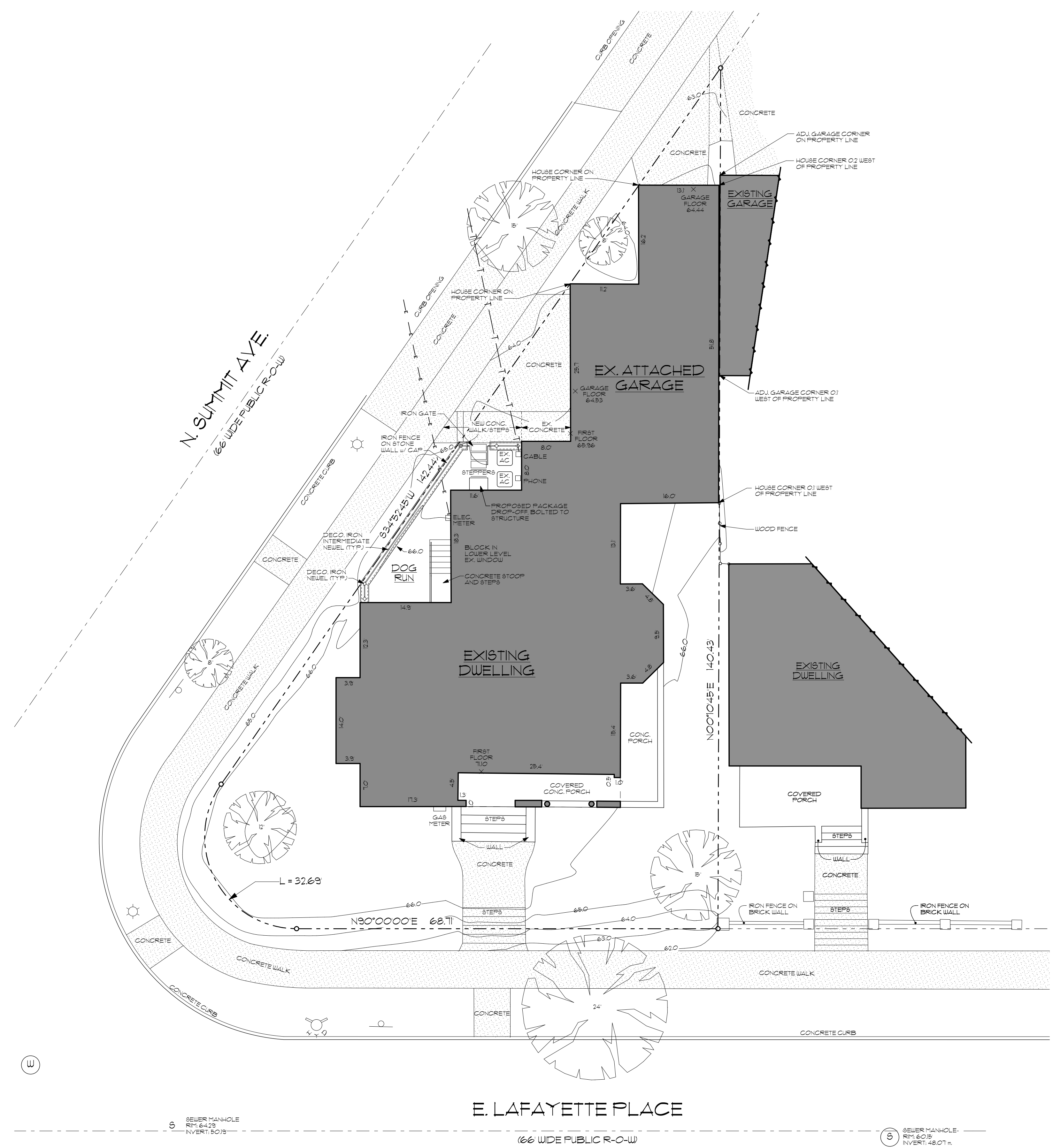
PROJECT TEAM

STRUCTURAL CONSULTANT
MICHAEL A. CORRIGAN P.E., A.L.A.
10521 NORTH FORT WASHINGTON ROAD
SUITE 220
MEQUON WISCONSIN 53092
(262) 241-9100 VOICE ~ (262) 241-9101 FAX
corrigan@milupco.com EMAIL



SITE SYMBOL KEY

	EXISTING TREE TO BE REMOVED		PROPOSED ELEVATION - CONTRACTOR TO VERIFY W/SEWER HEIGHT AND MAINTAIN REQUIRED PITCH
	EXISTING TREE TO REMAIN		EXISTING GRADE CONTOUR
	EXISTING UNDERGROUND GAS SERVICE		NEW GRADE CONTOUR
	EXISTING OVERHEAD ELECTRICAL SERVICE		SILT FENCE
	EXISTING OVERHEAD TELEPHONE LINE		EXISTING WATER MANHOLE
			EXISTING SEWER MANHOLE
			EXISTING FIRE HYDRANT
			EXISTING STREET LIGHT
			EXISTING STREET SIGN
			EXISTING WATER VALVE



1 SITE PLAN
SCALE: 1" = 10'

Project #1812
LAFAYETTE RENOVATION - FENCE
2006 E. LAFAYETTE PLACE
MILWAUKEE, WI 53202

DESCRIPTION	DATE
HISTORIC PRESERVATION COMMISSION	06-13-18

SITE PLAN

C1.1

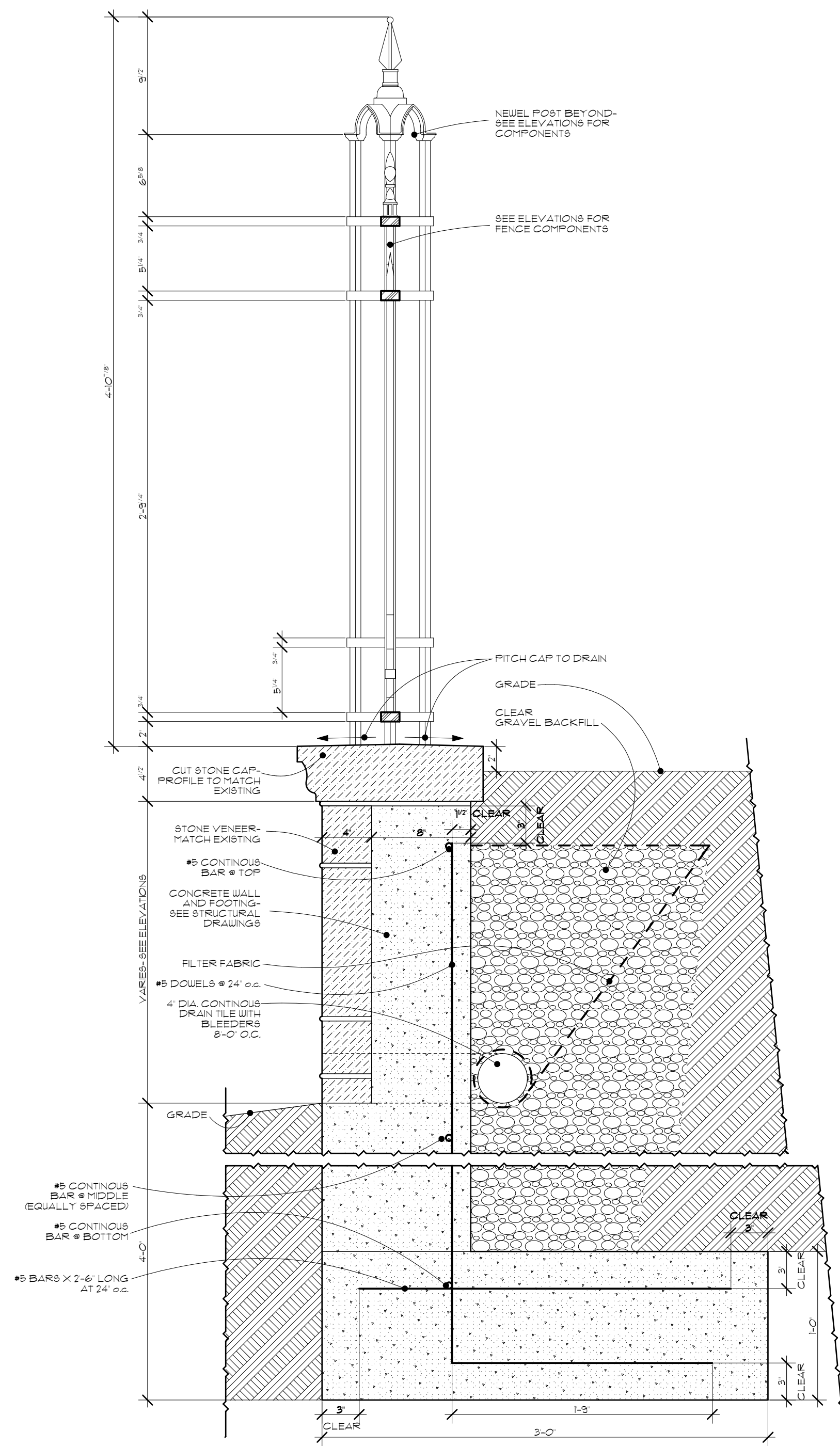
© Copyright 2010 Deep River Partners, Ltd. All rights reserved. This document, ideas and design incorporated herein are the property of Deep River Partners, Ltd. and are not to be used whole or in part without the written consent of Deep River Partners, Ltd.



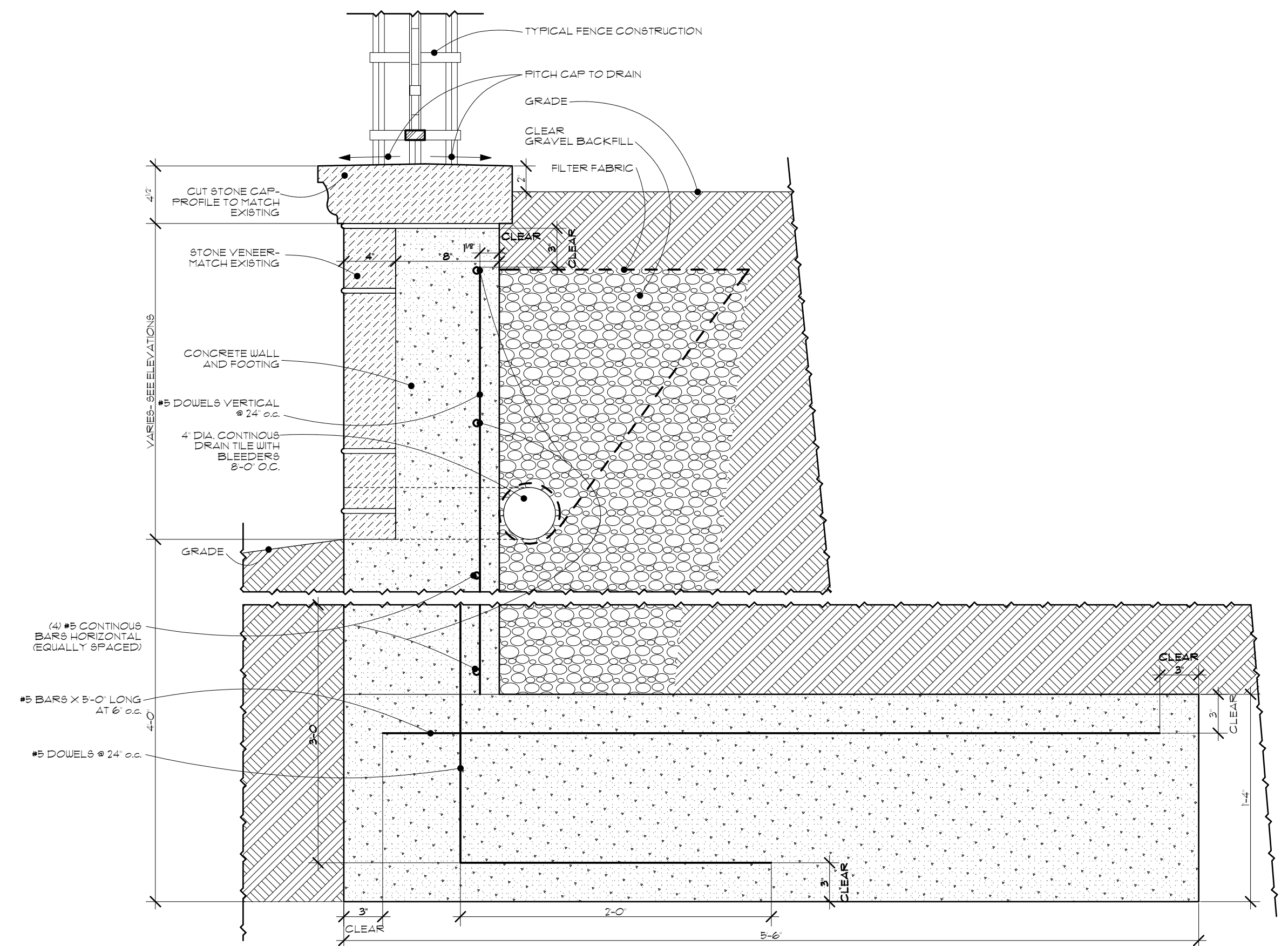
240 N. Milwaukee Street
Suite #400
Milwaukee, WI 53202

(414) 276.8550
deep-river.com

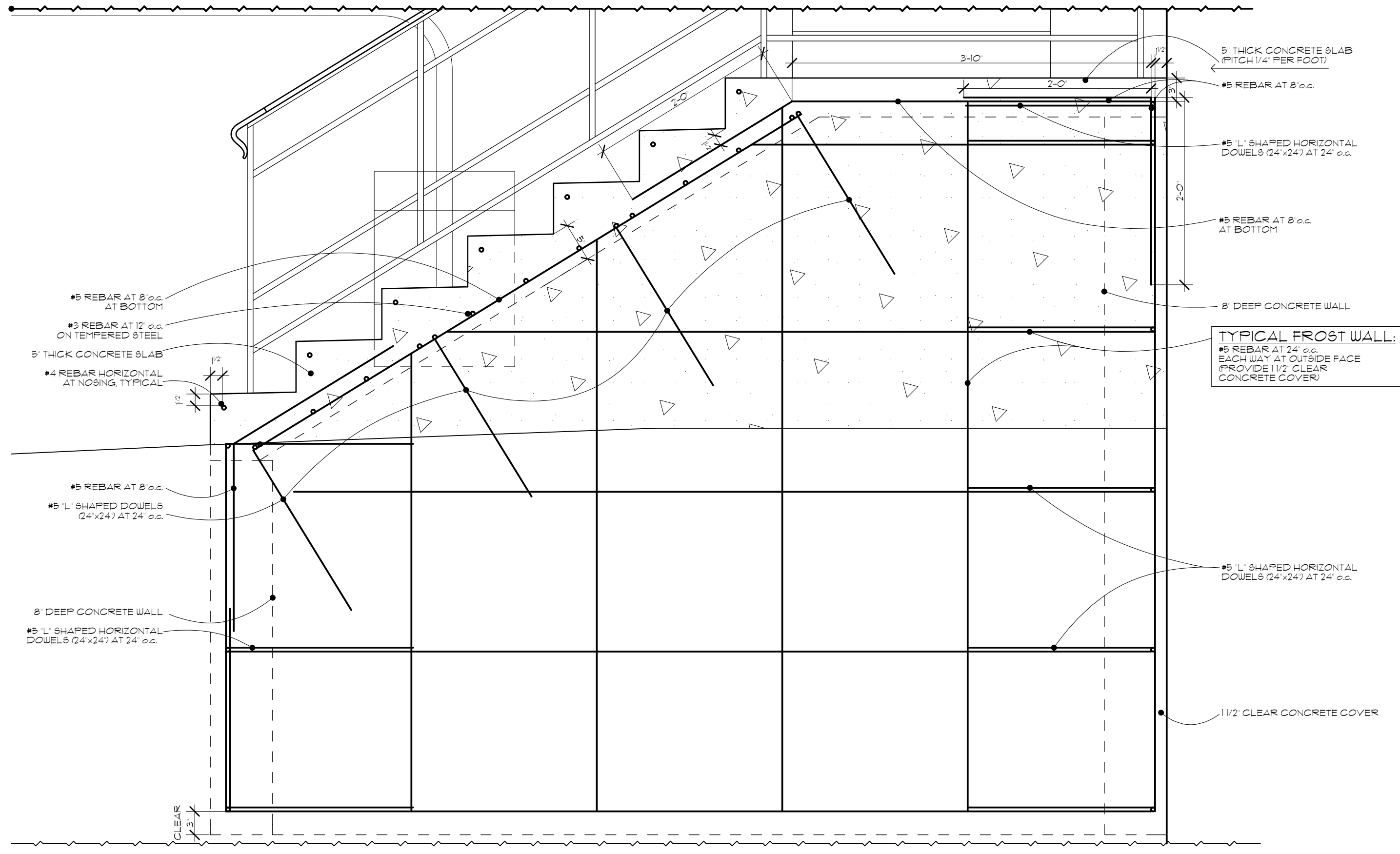
NOTE:
ALTHOUGH EVERY EFFORT HAS BEEN MADE IN PREPARING THESE CONTRACT DOCUMENTS AND CHECKING THEM FOR ACCURACY, THE CONTRACTORS MUST CHECK ALL DETAILS AND DIMENSIONS AND BE RESPONSIBLE FOR SAME. THE CONTRACTORS SHALL BE RESPONSIBLE FOR MAKING SURE THAT ALL WORK IS DONE IN ACCORDANCE WITH ALL STATE AND LOCAL CODES. THE CONTRACT DOCUMENTS UTILIZE A PROCESS CALLED FREE DESIGN OR DESIGN/BUILD FOR ROOF, WINDOW, PLUMBING, ELECTRICAL, HVAC DETAILS, AND AS DESIGNATED IN THE SPECIFICATION AS "TO BE COMPLETED ON A DESIGN/BUILD BASIS." THIS MEANS THAT THE CONTRACT DOCUMENTS DO NOT INCLUDE ALL REQUIRED DETAILS, AND THAT THE CONTRACTORS SHALL, USING THEIR OWN STAFF OR QUALIFIED SUBCONTRACTORS, DESIGN AND BUILD THE FREE DESIGN AND DESIGN/BUILD PORTIONS OF THE WORK. THE CLIENT IS DIRECTLY CONTRACTING WITH THE CONTRACTORS AND THEREFORE THE CLIENT AND THE CONTRACTORS ARE ASSUMING THE DESIGN AND BUILD RESPONSIBILITY FOR THE FREE DESIGN AND DESIGN/BUILD PORTIONS OF THE PROJECT. DEEP RIVER PARTNERS, LTD. IS NOT RESPONSIBLE FOR INSPECTING ANY ASPECT OF THE CONTRACTORS' WORK, OR FOR OBSERVATION OF THE CONTRACTORS' WORK FOR COMPLIANCE WITH THE CONTRACT DOCUMENTS.



1 TYPICAL FENCE / RETAINING WALL DETAIL
SCALE: 1/2" = 1'-0"



2 TYPICAL FENCE / TALL RETAINING WALL DETAIL
SCALE: 1/2" = 1'-0"



3 NEW STOOP REINFORCING DETAIL
SCALE: 1" = 1'-0"

Project #1812
LAFAYETTE RENOVATION - FENCE
2006 E. LAFAYETTE PLACE
MILWAUKEE, WI 53202

DESCRIPTION	DATE
HISTORIC PRESERVATION COMMISSION	06-13-18

EXTERIOR DETAILS

A5.1

© Copyright 2010 Deep River Partners, Ltd. All rights reserved. This document, ideas and design incorporated herein are the property of Deep River Partners, Ltd. and are not to be used whole or in part without the written consent of Deep River Partners, Ltd.