

City of  
**Milwaukee**  
Development Center

# Customer Information

809 N. Broadway/PO Box 324/Milwaukee, WI 53201-0324/414-286-8211

## Air or Subterranean Space Lease Petition

Submit this application with \$150 application fee to:  
Milwaukee Development Center  
Make check payable to City of Milwaukee.  
Application fee is non-refundable.

Date June 4, 2009

TO THE HONORABLE, THE COMMON COUNCIL OF THE CITY OF MILWAUKEE:

The undersigned MillerCoors, LLC, a Delaware limited liability company,

*(state whether petitioner is an individual, co-partnership, Wisconsin or foreign corporation)*

respectfully petitions the Common Council of the City of Milwaukee, according to the provisions of Section 66.048(3) and (4) of the Wisconsin Statutes, that the following space lease be granted:

Subterranean Space Lease for existing Special Privilege (No. 428) structures consisting of an underground tunnel approximately 6 feet wide and 8 feet high in and across West State Street, the center line of the underground tunnel being 63 feet 4 and 1/2 inches west of the west line of North 40th Street across and beneath West State Street in the vicinity of 4002 West State Street

of which building plans, plot plans and descriptive data showing the elevations, locations, height and size of the proposed structure and its relationship to adjoining buildings are herewith submitted.

The petitioners are the owners in fee of the following described real property:

MillerCoors, LLC owns the property on the north and south sides of West State Street including Lot 8, Block 2 and Lot 3, Block 1 in Assessor's Plat No. 124 being a part of the NW one-quarter of Section 25, Township 7 North, Range 21 East

also known by street and number as 4001 West State Street (Bldg. 1) and 3930 West State Street (Bldg. 33) which property is located on both sides of that portion of the (street, alley or XXXXXXXXXXXXX) to be so leased.

This petition is subject to such terms and conditions as may be agreed up on between the City of Milwaukee and the petitioner, which terms and conditions shall be set forth in a written lease pursuant to Section 66.048(3) and (4), Wisconsin Statutes. The leasing of such space shall be subject to a determination by the Common Council of the City of Milwaukee that such space is not needed for street, alley or other public purpose and that the public interest will be served by such leasing, and upon such determination as shall be authorized by ordinance duly passed by the City of Milwaukee.

Signature Brian C. Randall Brian C. Randall

Address 330 East Kilbourn Avenue, Suite 1250 53201

Phone (414) 271-0130

Corporation, firm or society MillerCoors, LLC

Address 3939 West Highland Boulevard (53208)

Title or office held in same Authorized Agent and Attorney-in-Fact

# SUBSURFACE EASEMENT EXHIBIT

## TUNNEL BELOW WEST STATE STREET

Situated in West State street, in the City of Milwaukee, Milwaukee County, Wisconsin.

A subsurface easement across West State street, being a part of the Southwest 1/4 of the Northwest 1/4 of Section 25, Town 7 North, Range 21 East, in the City of Milwaukee, Milwaukee County, Wisconsin, bounded and described as follows.

Commencing at the intersection of the present East line of North 41st street and the present South line of West State street; thence North  $82^{\circ}30'27''$  East, along the Southerly right of way line of West State street 190.51 feet to a point; thence North  $85^{\circ}35'32''$  East along said Southerly line 40.86 feet to the point of beginning of lands to be described; thence North  $05^{\circ}11'04''$  West 66.01 feet to a point on the Northerly line of West State street; thence North  $85^{\circ}35'32''$  East along said Northerly line 18.27 feet to a point; thence South  $05^{\circ}11'04''$  East 3.89 feet to a point; thence South  $39^{\circ}07'51''$  West 11.84 feet to a point; thence South  $05^{\circ}11'04''$  East 53.54 feet to a point on the Southerly line of West State street; thence South  $85^{\circ}35'32''$  West along said Southerly line 10.00 feet to the point of beginning.

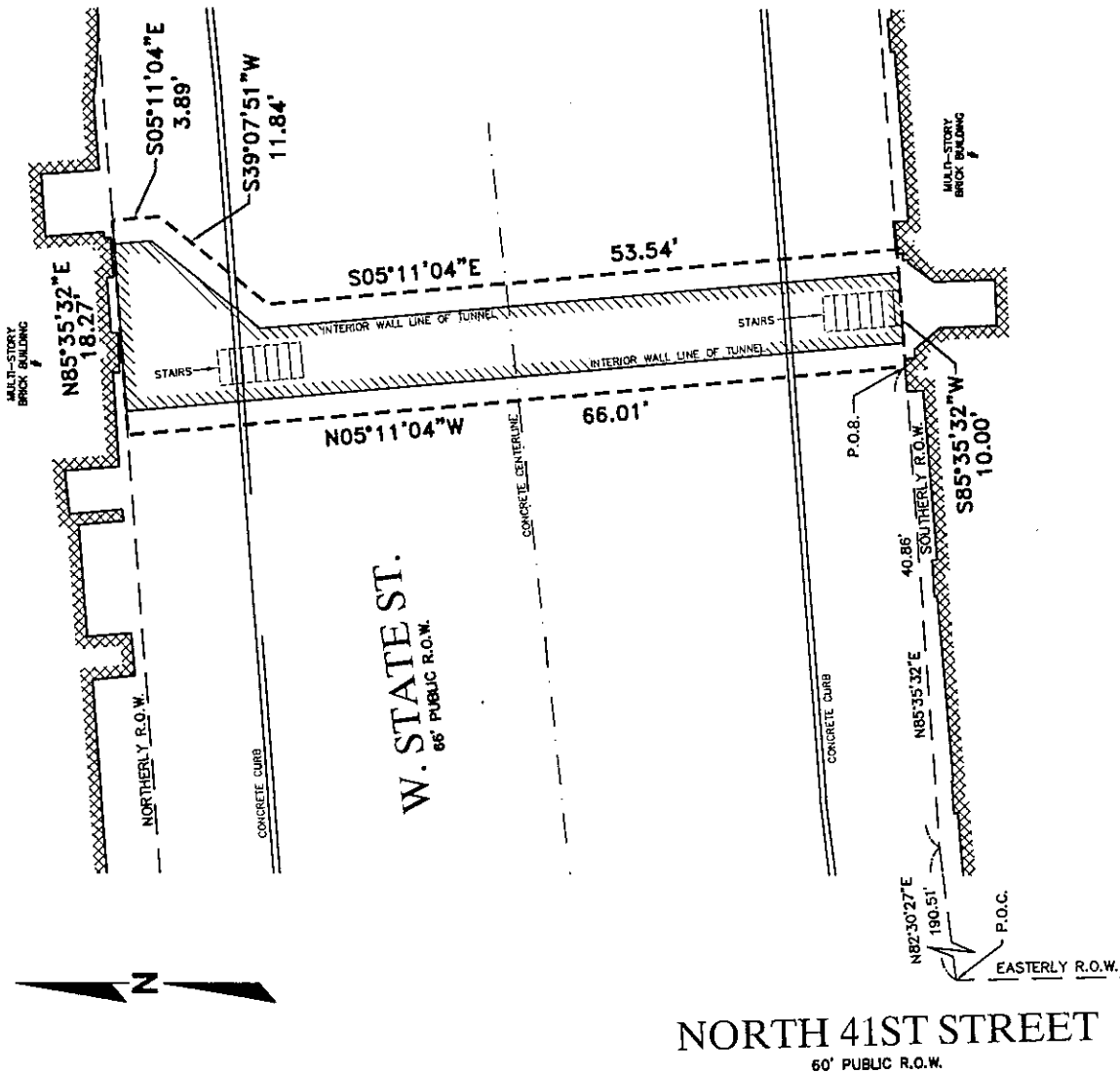
Containing 728 sq.ft. (0.017 acres).

February 19, 2009

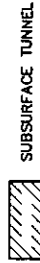
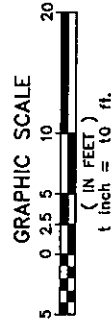
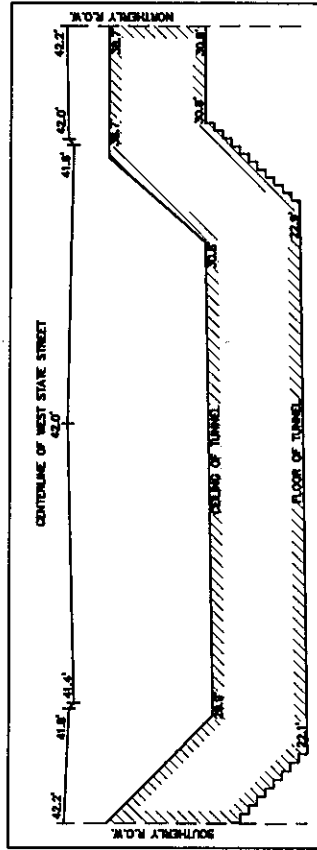
Miller Coors

Survey no. 163997-qjn

Notes:  
Elevations are based on the City of Milwaukee datum



PROFILE OF SUBSURFACE TUNNEL LOOKING WEST



R.A. Smith National, Inc.

Beyond Surveying  
and Engineering

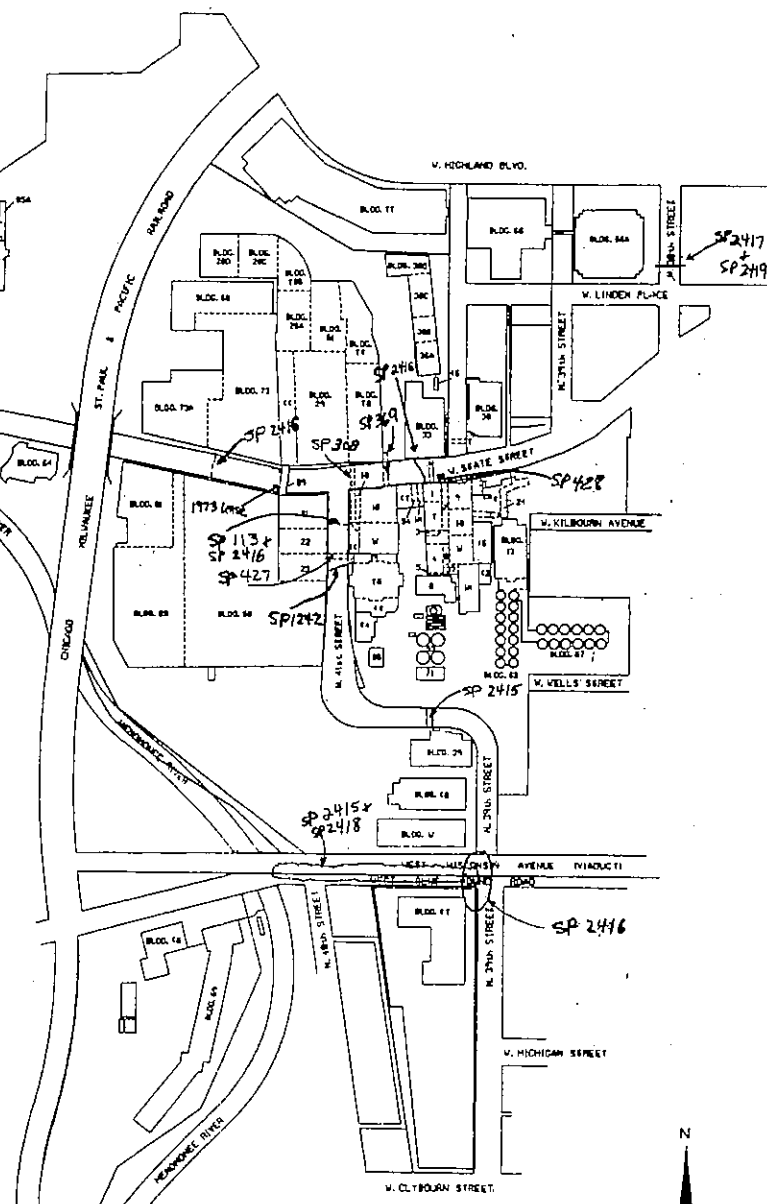
16745 W. Bluemound Road, Brookfield WI 53005  
262-781-1000 Fax 262-797-7373  
www.ra-smithnational.com

S.5163997-qjn-E  
EX36008.dwg/E:401010

SHEET 1 OF 1

(Existing SP 428)

BUILDING LEGEND	
1	ENGINE ROOM AND ENGINE ROOM
2	ENGINE ROOM
3	ENGINE ROOM
4	ENGINE ROOM
5	TOP STORIES AND SERVICE OFFICES
6	ENGINE ROOM
7	ENGINE ROOM
8	ENGINE ROOM
9	ENGINE ROOM
10	ENGINE ROOM
11	ENGINE ROOM
12	ENGINE ROOM
13	ENGINE ROOM
14	ENGINE ROOM
15	ENGINE ROOM
16	ENGINE ROOM
17	ENGINE ROOM
18	ENGINE ROOM
19	ENGINE ROOM
20	ENGINE ROOM
21	ENGINE ROOM
22	ENGINE ROOM
23	ENGINE ROOM
24	ENGINE ROOM
25	ENGINE ROOM
26	ENGINE ROOM
27	ENGINE ROOM
28	ENGINE ROOM
29	ENGINE ROOM
30	ENGINE ROOM
31	ENGINE ROOM
32	ENGINE ROOM
33	ENGINE ROOM
34	ENGINE ROOM
35	ENGINE ROOM
36	ENGINE ROOM
37	ENGINE ROOM
38	ENGINE ROOM
39	ENGINE ROOM
40	ENGINE ROOM
41	ENGINE ROOM
42	ENGINE ROOM
43	ENGINE ROOM
44	ENGINE ROOM
45	ENGINE ROOM
46	ENGINE ROOM
47	ENGINE ROOM
48	ENGINE ROOM
49	ENGINE ROOM
50	ENGINE ROOM
51	ENGINE ROOM
52	ENGINE ROOM
53	ENGINE ROOM
54	ENGINE ROOM
55	ENGINE ROOM
56	ENGINE ROOM
57	ENGINE ROOM
58	ENGINE ROOM
59	ENGINE ROOM
60	ENGINE ROOM
61	ENGINE ROOM
62	ENGINE ROOM
63	ENGINE ROOM
64	ENGINE ROOM
65	ENGINE ROOM
66	ENGINE ROOM
67	ENGINE ROOM
68	ENGINE ROOM
69	ENGINE ROOM
70	ENGINE ROOM
71	ENGINE ROOM
72	ENGINE ROOM
73	ENGINE ROOM
74	ENGINE ROOM
75	ENGINE ROOM
76	ENGINE ROOM
77	ENGINE ROOM
78	ENGINE ROOM
79	ENGINE ROOM
80	ENGINE ROOM
81	ENGINE ROOM
82	ENGINE ROOM
83	ENGINE ROOM
84	ENGINE ROOM
85	ENGINE ROOM
86	ENGINE ROOM
87	ENGINE ROOM
88	ENGINE ROOM
89	ENGINE ROOM
90	ENGINE ROOM
91	ENGINE ROOM
92	ENGINE ROOM
93	ENGINE ROOM
94	ENGINE ROOM
95	ENGINE ROOM
96	ENGINE ROOM
97	ENGINE ROOM
98	ENGINE ROOM
99	ENGINE ROOM
100	ENGINE ROOM



MILLER BREWING COMPANY  
MILWAUKEE PLANT  
FACILITY LAYOUT

SCALE  
1" = 100'  
BRADYMATIC 1"=100'

DATE: JUNE 26, 1968



SP 428



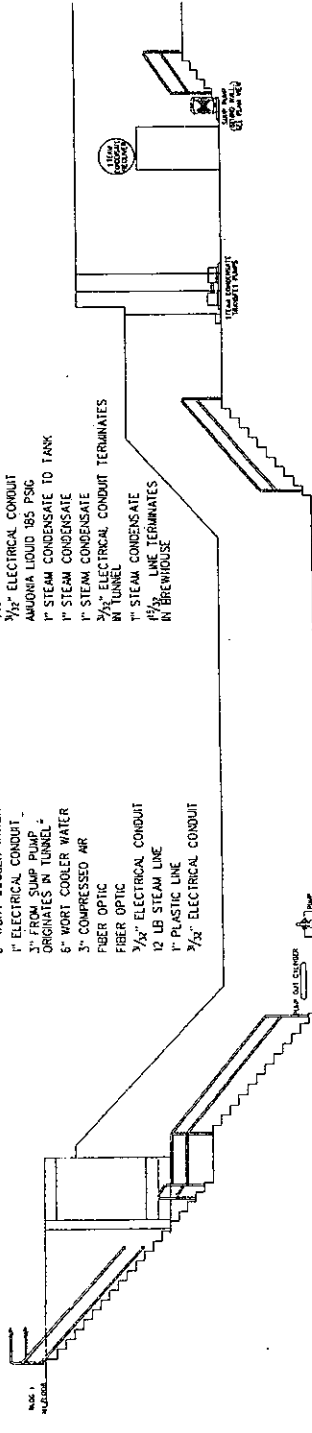
PLAN VIEW  
AS SHOWN ON SHEET 428-1-A

THIS TUNNEL CONTAINS THE FOLLOWING UTILITIES AND PROCESSES

- 1" AMMONIA PUMP OUT
- 1" HOSE
- 6" 170° HOT WATER
- 1 1/2" COMPRESSED AIR
- 3/4" CARBON DIOXIDE
- 1/2" INSTRUMENT AIR
- 1" ELECTRICAL CONDUIT
- 2" ELECTRICAL CONDUIT
- 2" ELECTRICAL CONDUIT
- 1" AMMONIA PUMP OUT
- 1" AMMONIA SUCTION 24 PSIG
- 1" HOSE
- 1 1/2" AMMONIA LIQUID 185 PSIG
- 1/2" PIPE
- 1 1/2" LB STEAM
- 1" AMMONIA PUMP OUT
- 6" WORT COOLER WATER
- 1" ELECTRICAL CONDUIT
- 3" FROM SUMP PUMP ORIGINATES IN TUNNEL
- 6" WORT COOLER WATER
- 3" COMPRESSED AIR
- FIBER OPTIC
- FIBER OPTIC
- 1/2" ELECTRICAL CONDUIT
- 12 LB STEAM LINE
- 1" PLASTIC LINE
- 1/2" ELECTRICAL CONDUIT

UTILITIES  
ENGINE ROOM  
BLDG 1

BLDG 33  
BREWHOUSE

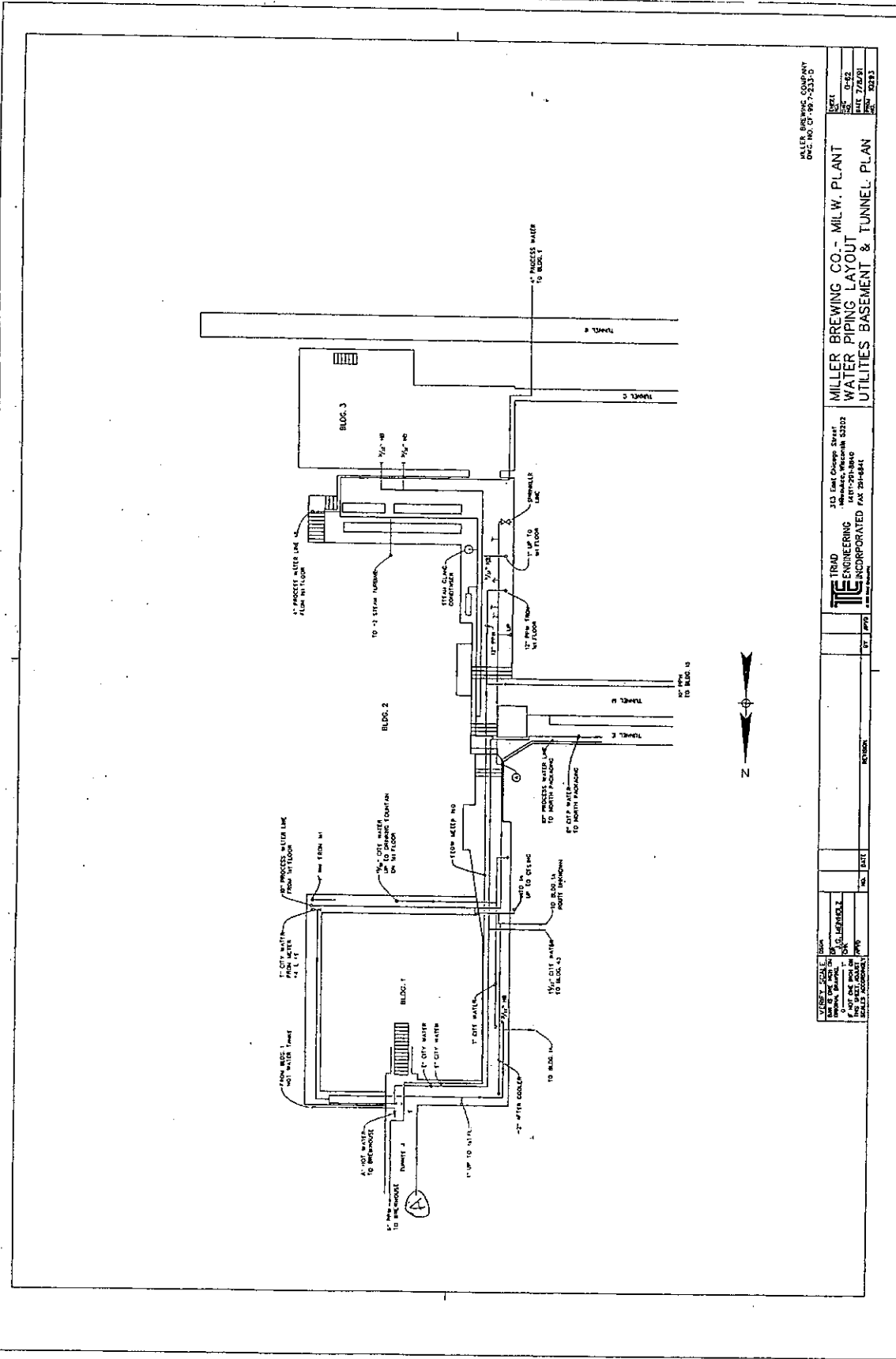


EAST ELEVATION LOOKING WEST

SECTION A

428

DESIGNED BY: J. SCHULTE	DATE: 01/11/84	CHECKED BY: J. SCHULTE	DATE: 01/11/84
PROJECT NO. 428			
PROJECT NAME: MILLER BREWING COMPANY TUNNEL CONNECTING BLDG UTILITIES AND BLDG 33 BREWHOUSE			
ENGINEER: MILLER TRIAD ENGINEERING INCORPORATED 1427 N. 10TH ST. MILWAUKEE, WISCONSIN 53202			
CLIENT: MILLER BREWING COMPANY 533 East Chicago Street Milwaukee, Wisconsin 53202			
SCALE: 1/4" = 1'-0"	SHEET NO.: 428	TOTAL SHEETS: 1	DATE: 01/11/84



MILLER BREWING COMPANY  
 D.C. NO. CF-89-7-233-D

DATE	0-22
BY	JW/DB
CHK	DB
APP	DB

MILLER BREWING CO. - MILW. PLANT  
 WATER PIPING LAYOUT  
 UTILITIES BASEMENT & TUNNEL PLAN

313 East Chicago Street  
 Milwaukee, Wisconsin 53202  
 TEL: 224-1800  
 INCORPORATED  
 FAX: 224-8844

TRAD ENGINEERING  
 INCORPORATED  
 1717 W. WISCONSIN  
 MILWAUKEE, WI 53227  
 TEL: 224-2400  
 FAX: 224-2400

NO.	DATE	REVISION

SCALE: AS SHOWN  
 DRAWN BY: J. W. DUBOIS  
 CHECKED BY: D. B. BERNARD  
 DATE: 08-22-89  
 PROJECT NO.: 89-001  
 SHEET NO.: 2013