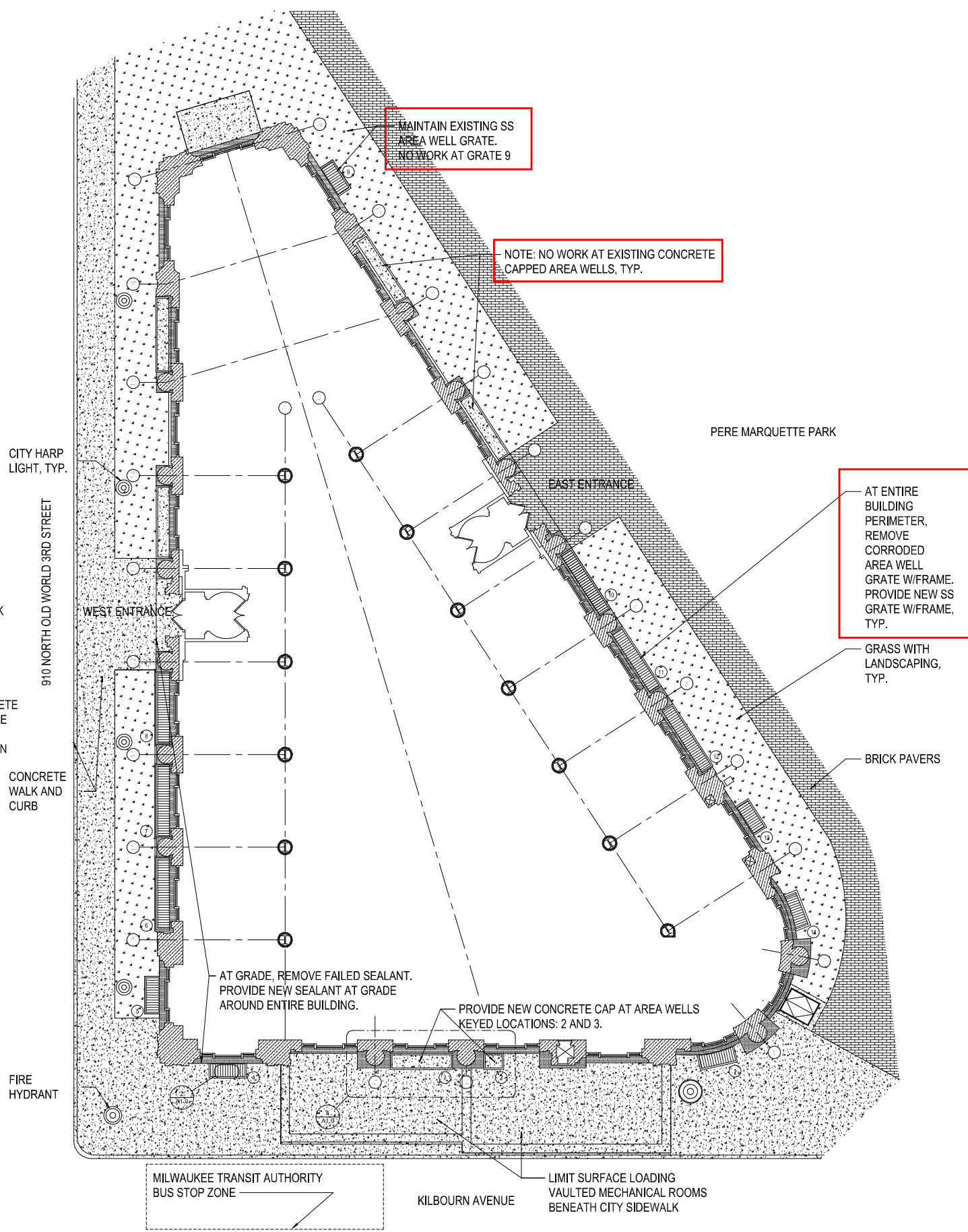


- NOTES:
1. PROVIDE 2" MIN. CLEAR SPACE ON REINFORCEMENT STEEL.
 2. USE (4) KSI COMPRESSIVE STRENGTH CONCRETE.
 3. SLOPE TOP OF CONCRETE CAP A MINIMUM OF 1/4" PER FOOT, TOWARD STREET.
 4. REPAIR OR PATCH EXISTING CONCRETE TO REMAIN AS NEEDED TO PREVENT WATER INFILTRATION PROBLEMS.
 5. EXISTING WINDOW COMPONENTS AND FRAMES MAY REMAIN-IN-PLACE OR BE REMOVED TO FACILITATE CONSTRUCTION.
 6. WINDOW GLASS SHALL BE REMOVED.
 7. CONTRACTOR SHALL TAKE CARE NOT TO DAMAGE EXISTING CONCRETE STONE OR SIDEWALK, TO REMAIN.
 8. JOINT SEALANT SHALL BE TYPE: TREMCO - VULKEM 45SSL OR EQUAL. REFER TO SPECIFICATION SECTION 079200 "JOINT SEALANTS".



LOCATIONS OF WINDOW AREA WELLS AT GRADE
1/8" = 1'-0"