



LIVING WITH HISTORY

Certificate of Appropriateness

Milwaukee Historic Preservation Commission/200 E. Wells Street/Milwaukee, WI 53202/phone 414-286-5712/fax 414-286-3004

Property 205 E. WISCONSIN AV. East Side Commercial Historic district
Description of work Install signage on street level storefront to consist of non-illuminated raised letter signage, non-illuminated individual letters applied to selected windows, a projecting sign on a bracket, a corner sign and historic recognition plaques.
Date issued 6/13/2013 PTS ID 95505 COA, signage

In accordance with the provisions of Section 320-21 (11) and (12) of the Milwaukee Code of Ordinances, the Milwaukee Historic Preservation Commission has issued a certificate of appropriateness for the work listed above. The work was found to be consistent with preservation guidelines. The following conditions apply to this certificate of appropriateness:

All work will be done according to the illustrations and specifications contained in this COA.

All work must be done in a craftsman-like manner, and must be completed within one year of the date this certificate was issued. Staff must approve any changes or additions to this certificate before work begins. Work that is not completed in accordance with this certificate may be subject to correction orders or citations. If you require technical assistance, please contact Paul Jakubovich of the Historic Preservation staff as follows: Phone: (414) 286-5712 Fax: (414) 286-3004 E-mail: pjakub@milwaukee.gov.

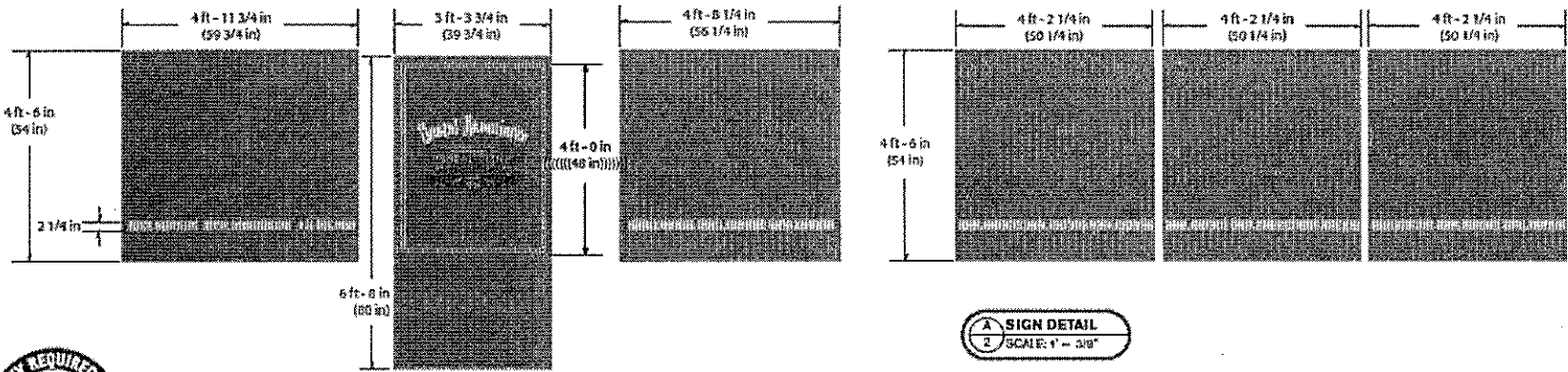
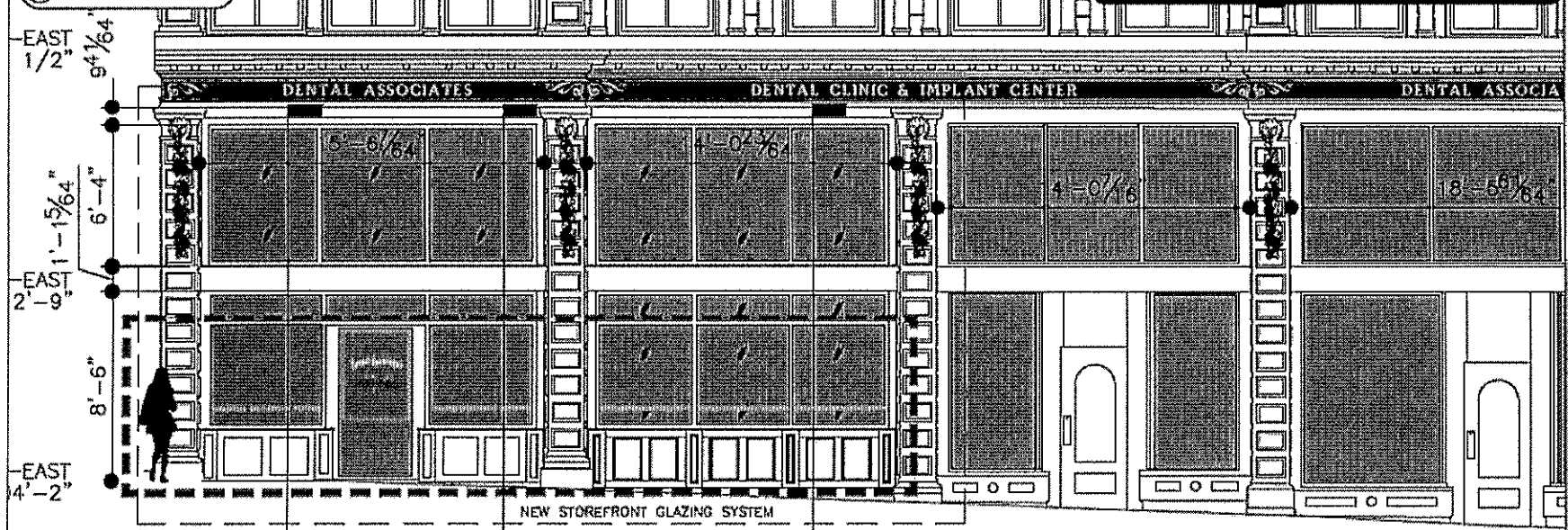
If permits are required, you are responsible for obtaining them from the Milwaukee Development Center. If you have questions about permit requirements, please consult the Development Center's web site, www.milwaukee.gov/build, or call (414) 286-8210.

City of Milwaukee Historic Preservation

Copies to: Development Center, Ald. Robert Bauman, Contractor Creative Sign, Inspector Bill Richter (286-2518), Inspector Heidi Weed

VINYL GRAPHICS: LOC 1

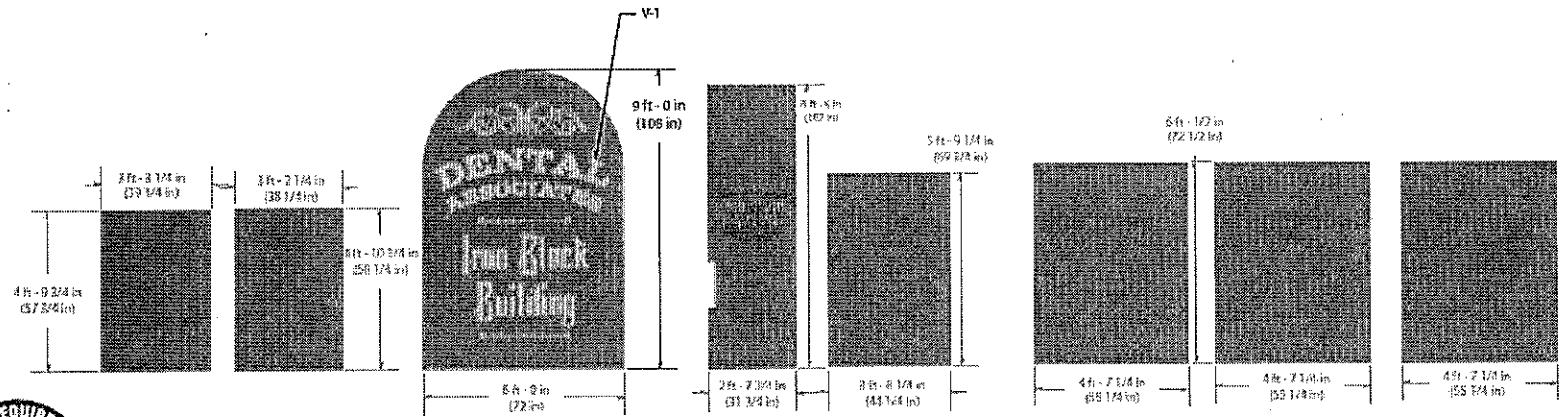
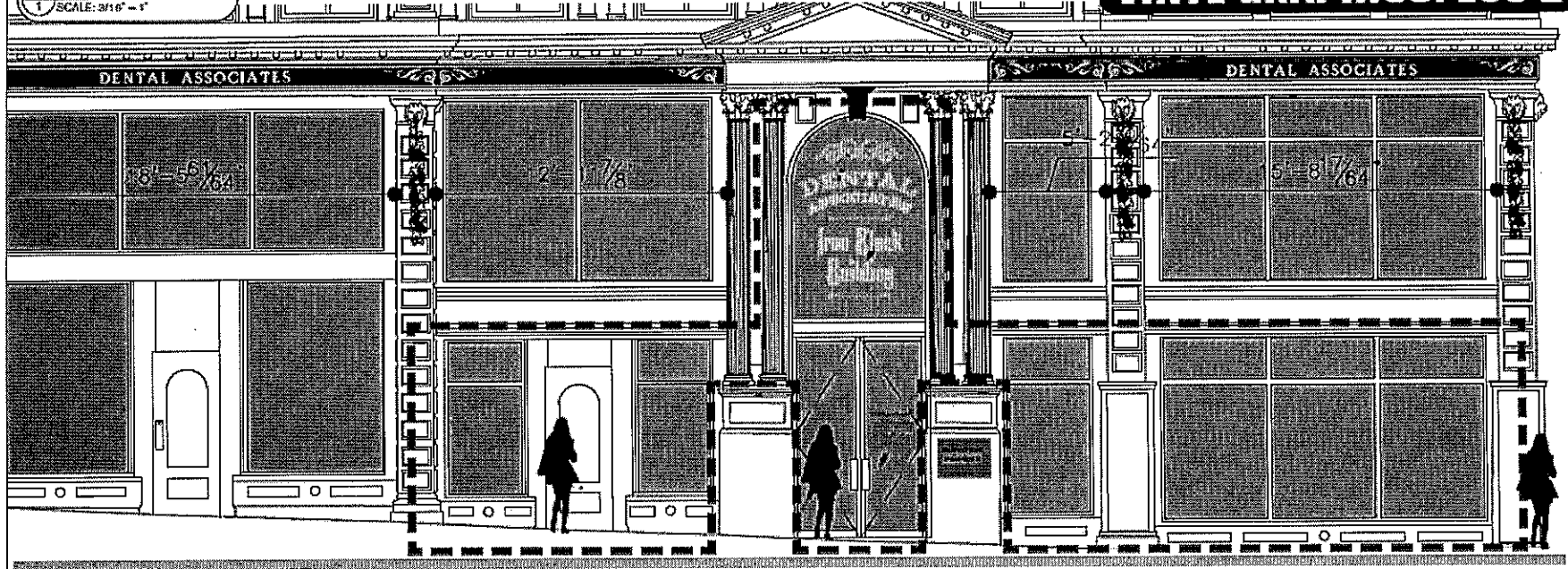
A LOCATION VIEW DETAIL
1 SCALE: 3/16" = 1'



A SIGN DETAIL
2 SCALE: 1" = 3/8"

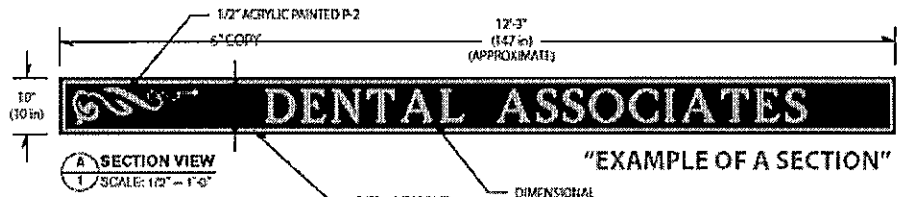
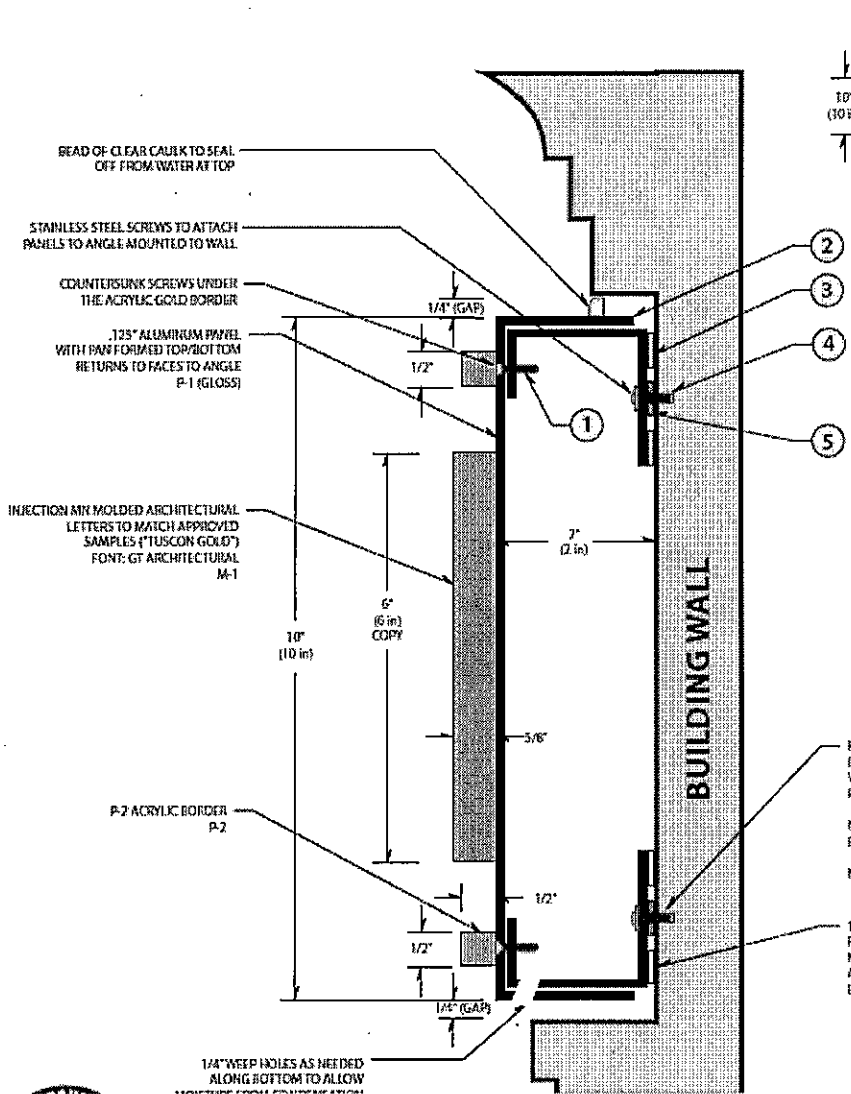
VINYL GRAPHICS: LOC 2

A LOCATION VIEW DETAIL
1 SCALE: 3/16" = 1'



A SIGN DETAIL
2 SCALE: 1" = 1/4"

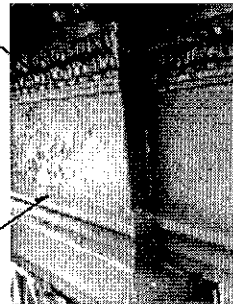
CUT VIEW DETAIL OF TYPICAL SECTION: 1 - 8



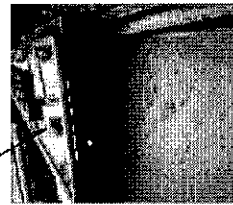
- SAMPLE ITEMS:**
- ① COUNTERSUNK SCREWS
 - ② .125" ALUMINUM PANELING
 - ③ 1/2" WIDE VHB TAPE
 - ④ STAINLESS STEEL SCREWS (#10 x 24)
 - ⑤ 1/2" WIDE RUBATEX GASKET



SITE PIC #1



SITE PIC #2



SITE PIC #3

FASTEN TO EXISTING STEEL BEAM BY DRILLING AND TAP TO SECURE ANGLE WITH STAINLESS STEEL #10 x 24 x 3/4" PHILLIPS HEAD SCREWS

NOTE: NEOPRENE WASHER REQUIRED BETWEEN BEAM AND CHANNEL

NOTE: SCREWS TO PENETRATE AT LEAST 1/4" DEEP

1/2" WIDE 3M VHB TAPE WILL PROVIDE A BARRIER FROM METALS TOUCHING AS WELL AS ADHERE CHANNEL TO EXISTING STRUCTURE

UNEVEN FASCIA LINES

CROWN MOLDING

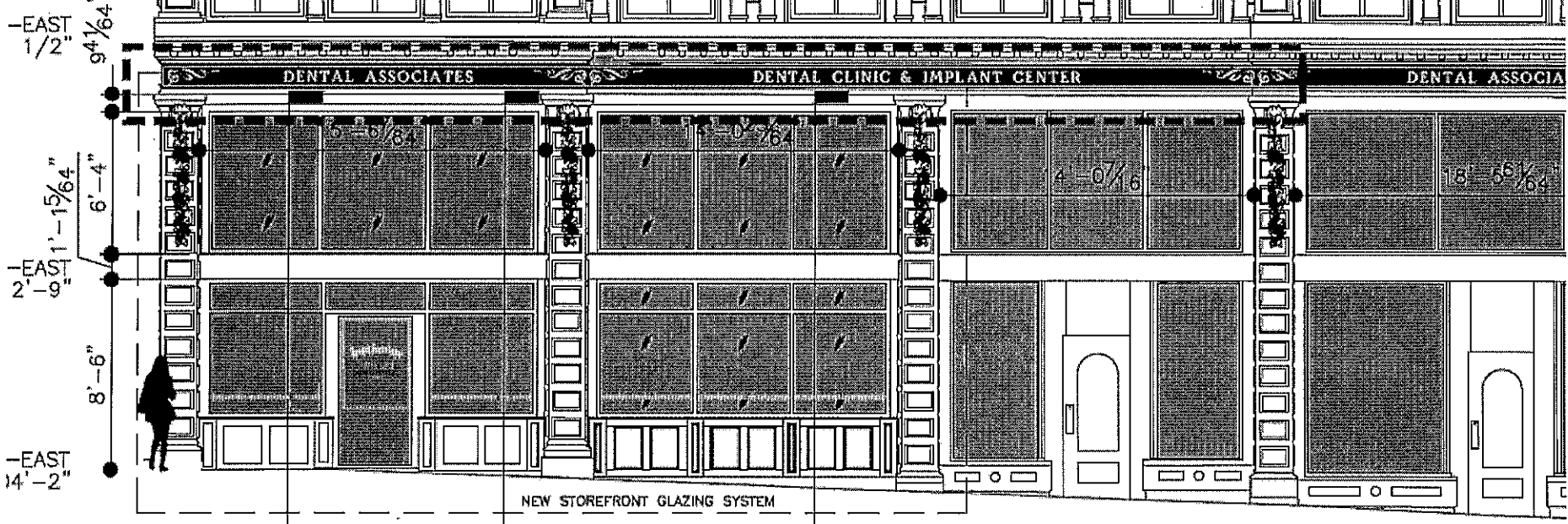
2" INDENT

EXAMPLE OF HOW "FDU SAMPLE" FITS IN FASCIA CONDITION

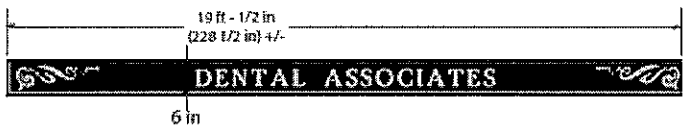
1/4" WEEP HOLES AS NEEDED ALONG BOTTOM TO ALLOW

A LOCATION VIEW DETAIL
1 SCALE: 3/16" = 1'

INJECTION MOLDED LETTERS ON PANEL: 1 & 2



A FRONT VIEW
2 SCALE: 1" = 1/2"



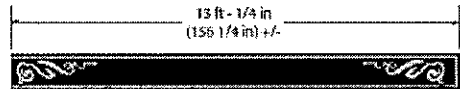
1 LOCATION VIEW DETAIL
SCALE: 2/16" = 1"

INJECTION MOLDED LETTERS ON PANEL: 3 & 4

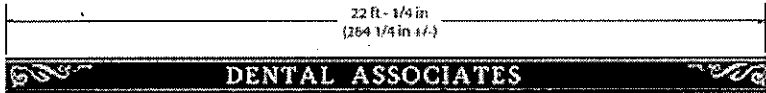


2 FRONT VIEW
SCALE: 1" = 1/4"

4

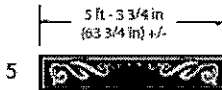


3



A LOCATION VIEW DETAIL
1 SCALE: 3/16" = 1"

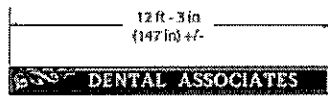
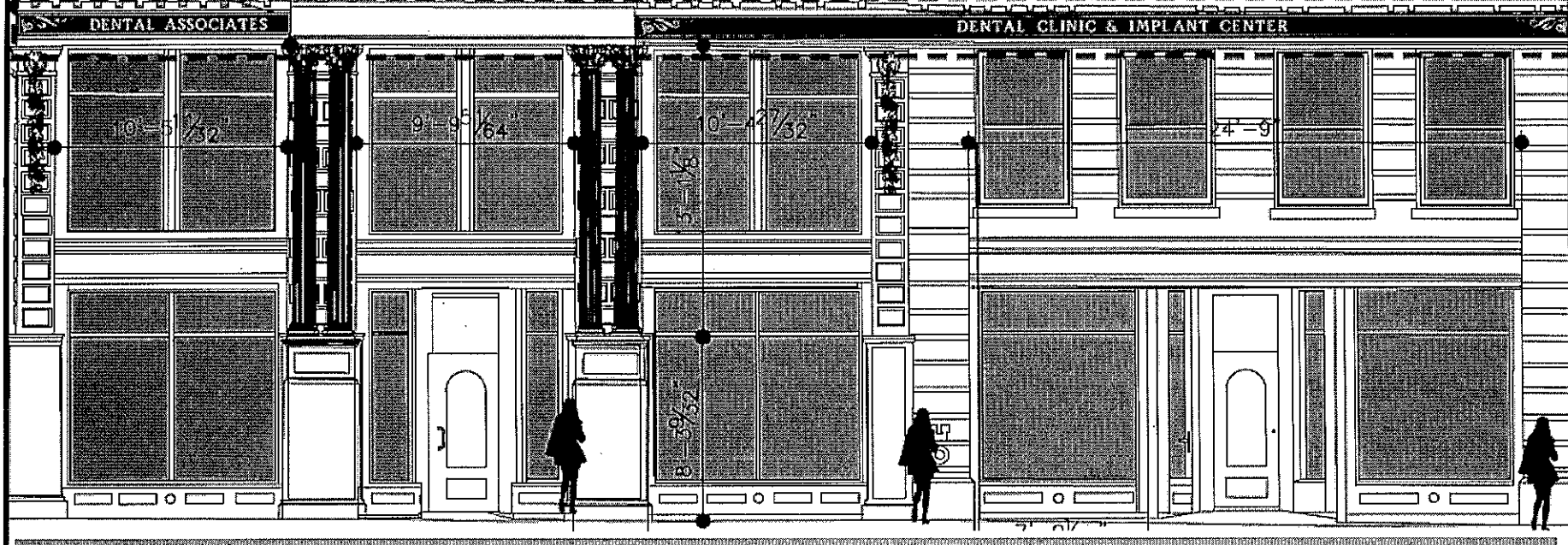
INJECTION MOLDED LETTERS ON PANEL: 5 & 6



A FRONT VIEW
2 SCALE: 1" = 14"

A LOCATION VIEW DETAIL
1 SCALE: 3/16" = 1"

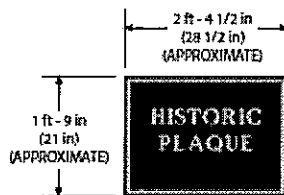
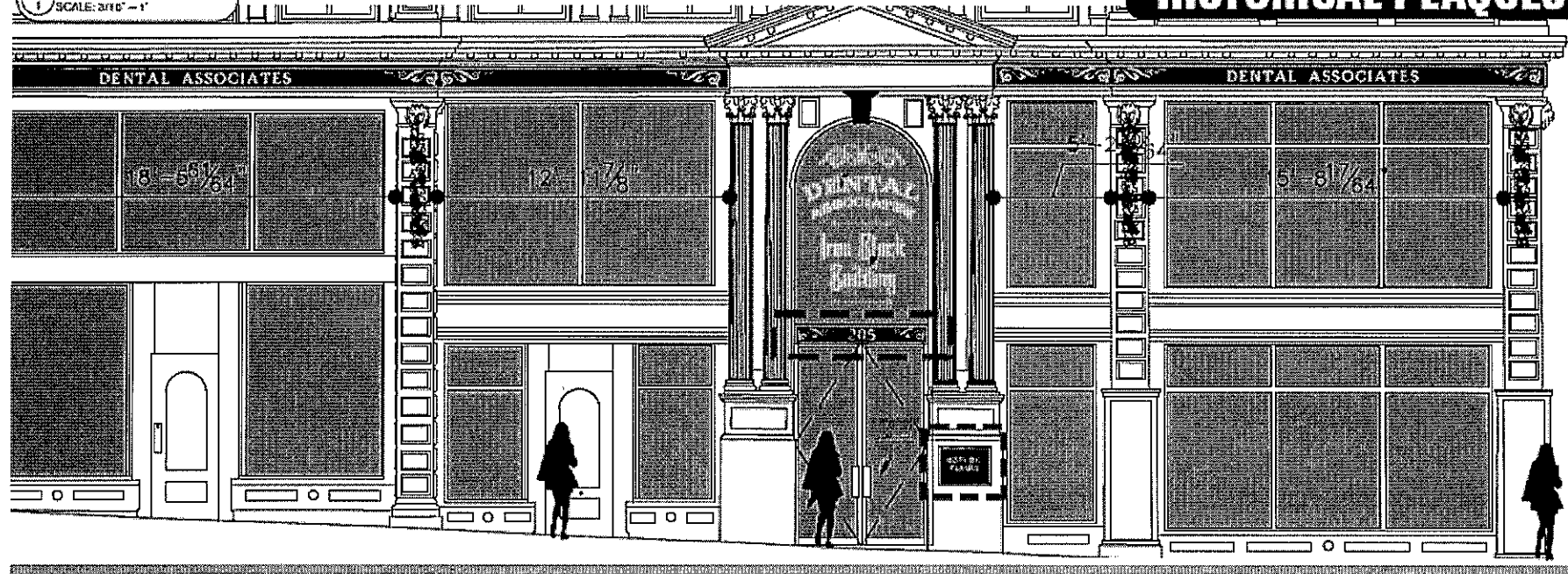
INJECTION MOLDED LETTERS ON PANEL: 7 & 8



A FRONT VIEW
2 SCALE: 1" = 8/16"

A LOCATION VIEW DETAIL
1 SCALE: 3/16" = 1"

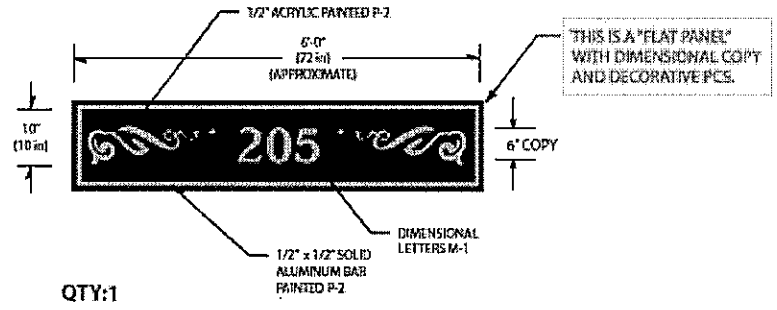
HISTORICAL PLAQUES



QTY:1

A SECTION VIEW
2 SCALE: 1/2" = 1'-0"

INFORMATION FOR HISTORICAL (PLAQUE IS REQUIRED) *
 NOTE: THIS SIGN MAY REQUIRE VINYL COPY W/ A CLEAR COAT DEPENDING ON THE INFO REQUIRED ON SIGN



QTY:1

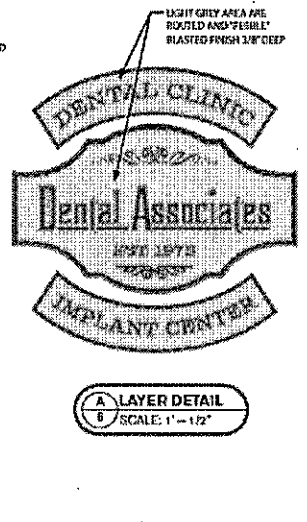
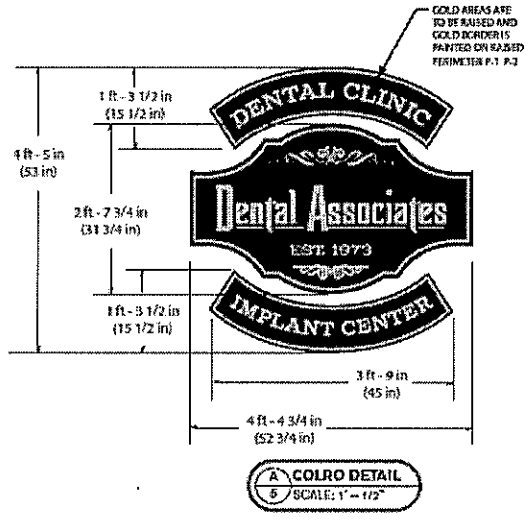
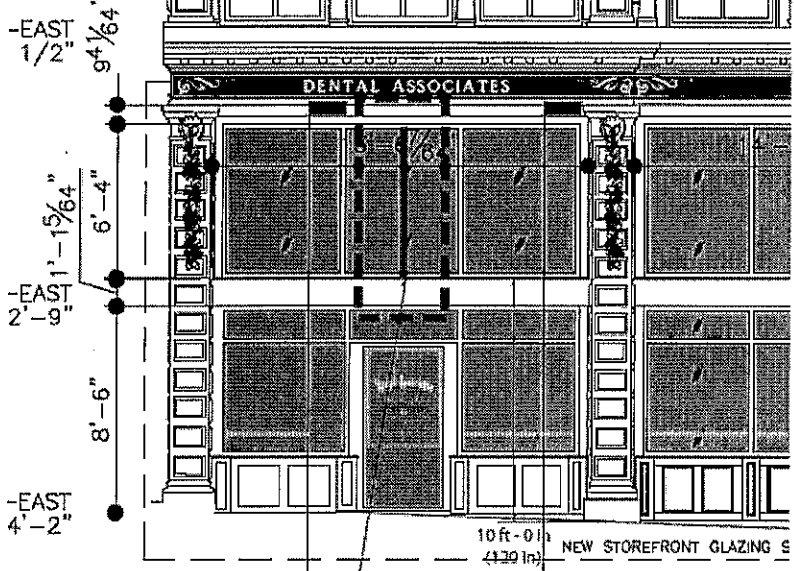
PANEL CUT SIZE: 71 3/4" x 15 3/4"
 VISIBLE AREA: 71" x 15" (exposed)

A DETAIL VIEW
3



HANGING HDU SIGN

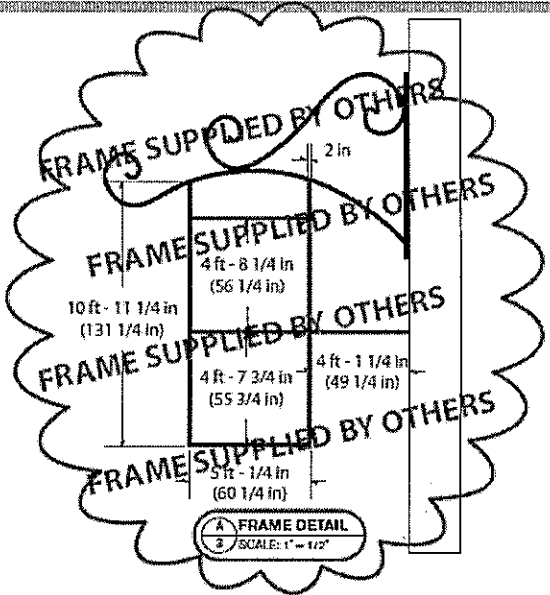
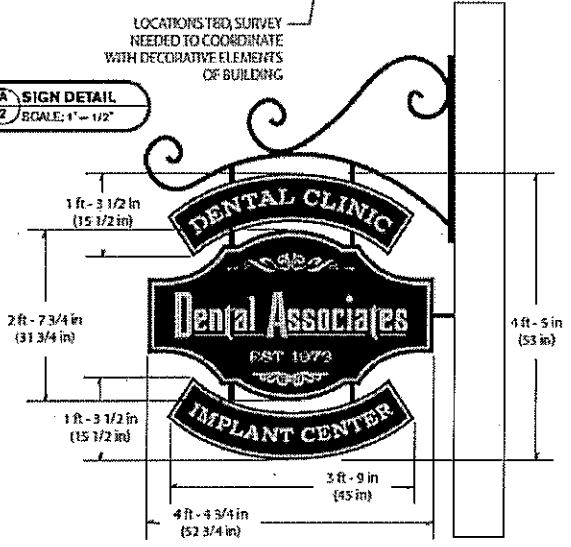
A LOCATION VIEW DETAIL
1 SCALE: 3/16" = 1'



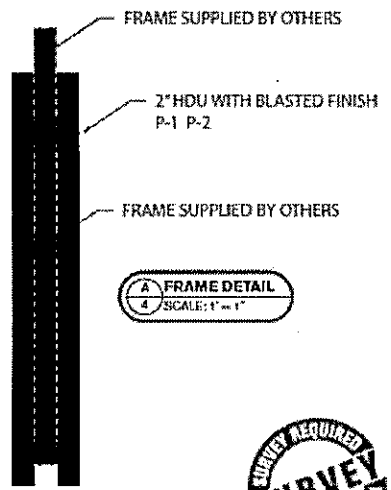
A COLOR DETAIL
5 SCALE: 1" = 1/2"

LOCATIONS TRD, SURVEY
NEEDED TO COORDINATE
WITH DECORATIVE ELEMENTS
OF BUILDING

A SIGN DETAIL
2 SCALE: 1" = 1/2"



A FRAME DETAIL
3 SCALE: 1" = 1/2"

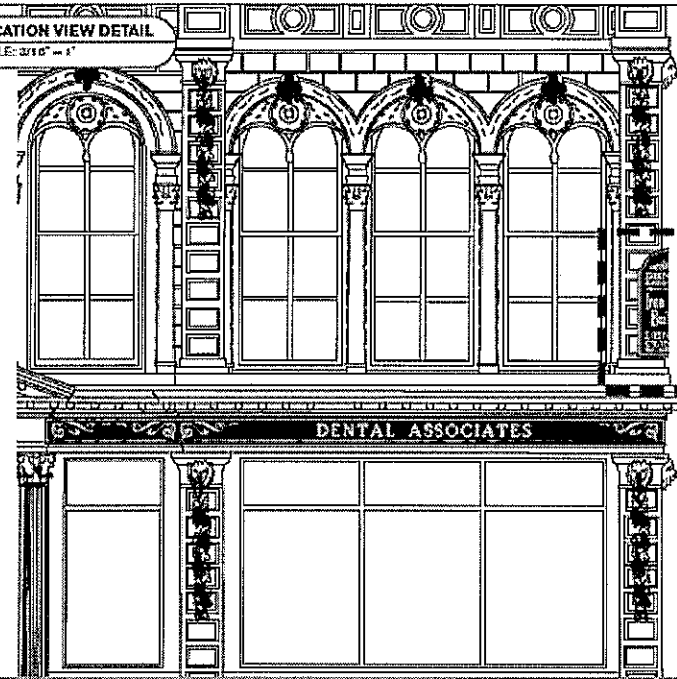


A FRAME DETAIL
4 SCALE: 1" = 1"

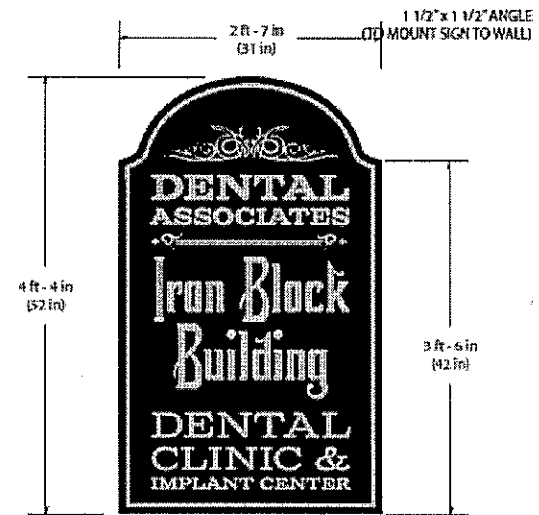
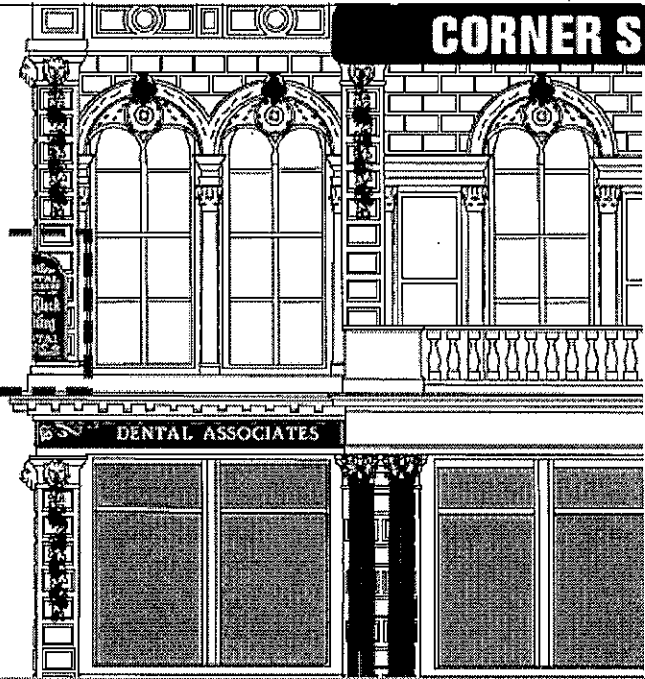


This is an original, unpublished drawing by Creative Signs Co., Inc. It is for your personal use, in conjunction with a project being planned for you by Creative Signs Co., Inc. It is not to be shown to anyone outside of your organization nor to be used, reproduced, copied or exhibited in any fashion. Use of this design as the content of any sign done by any other company, without the expressed written permission of Creative Signs Co., Inc., is forbidden by law and carries a civil liability of up to 20% of the purchase price of the sign. Creative Signs will endeavor to closely match colors, including PMS, when specified. We cannot guarantee exact matches due to varying consistency of surfaces, materials and paint used. All sizes and dimensions are illustrated for client's conception of the project and are not to be understood as being exact size or exact scale.

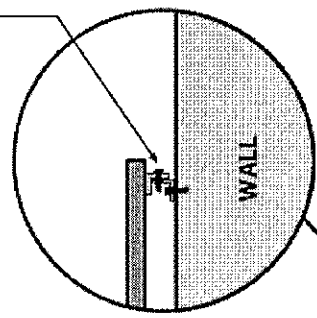
A LOCATION VIEW DETAIL
1 / SCALE: 3/16" = 1"



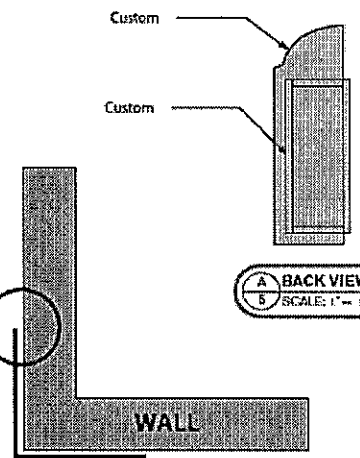
CORNER SIGN



A SIGN DETAIL
2 / SCALE: 1" = 3/4"



A DETAILS
4 / SCALE: 1" = 8"



A PLAN VIEW
3 / SCALE: 1" = 3/4"

A BACK VIEW
5 / SCALE: 1" = 1 1/2"

