

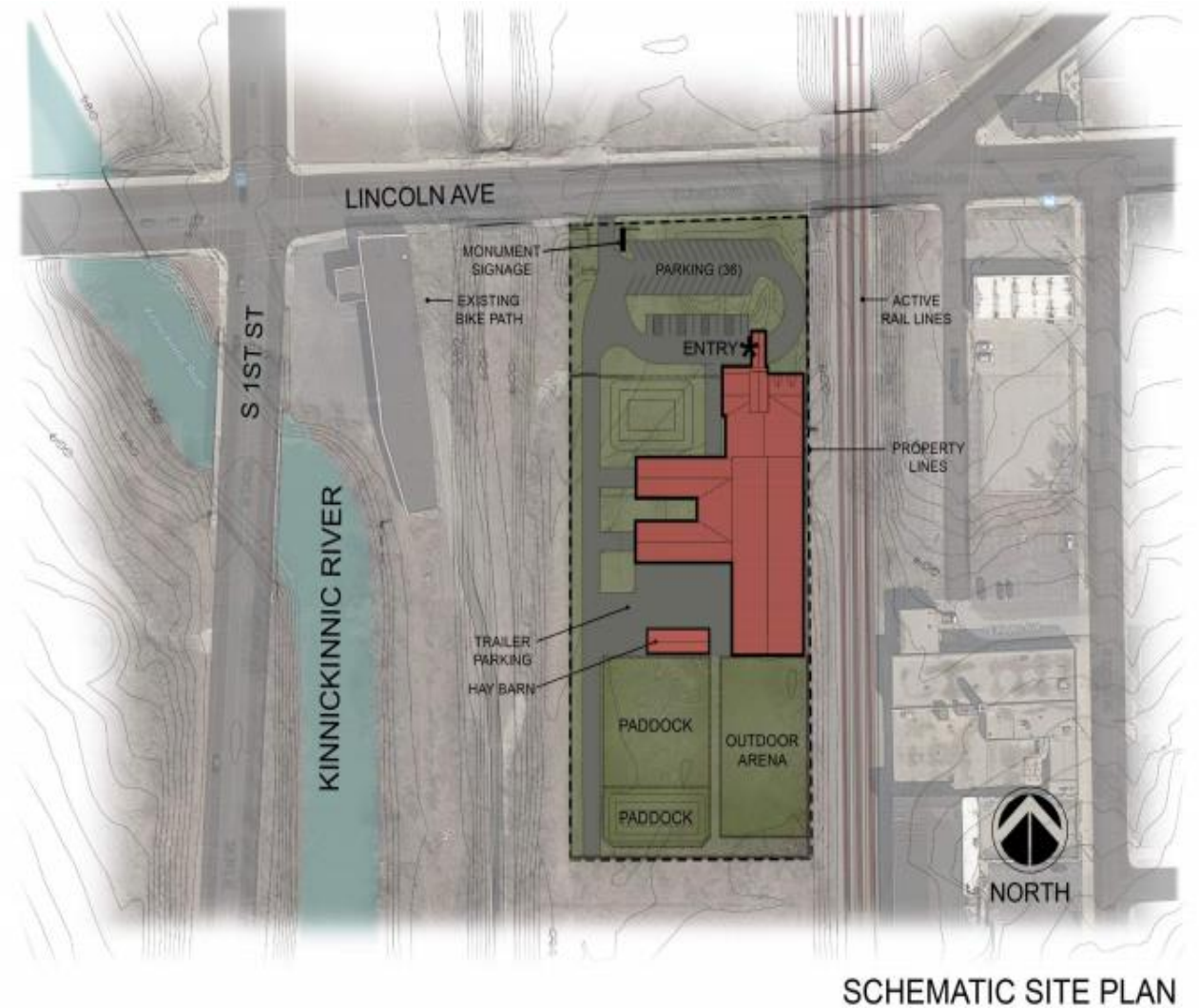
MILWAUKEE URBAN STABLES

STRENGTHENING COMMUNITY THROUGH SERVICE, CARE & HEALING



PROJECT OVERVIEW

- First facility in the nation to combine Mounted Patrol, equine-assisted therapy, and community engagement programs
- 30,000 sf. facility with capacity for 24 horses
- Located on 4 acres owned by City of Milwaukee/RACM
- Publicly-accessible year-round



MOUNTED PATROL



- Mounted Patrol officers effectively patrol dense areas and efficiently manage large crowds
 - One officer on horseback is the patrolling equivalent of 10 - 12 officers on foot
- More approachable than officers in vehicles
 - Important for improving police/community relations

MOUNTED PATROL



- Currently no permanent headquarters or adequate local housing for horses
 - Horses are now stabled in Racine and transported to and from Milwaukee
- Milwaukee Urban Stables
 - Quality local headquarters
 - Capacity for up to 12 police horses
 - Secure office space as well as conference space and a multi-purpose community room to accommodate school and community groups

EQUINE-ASSISTED THERAPY

- **Equine-Assisted Psychotherapy**
Participants work with mental health professionals and volunteers on psychotherapy goals
- **Equine-Assisted Learning**
Participants work with professional instructors and volunteers to develop life skills through interactions with a horse
- **Hippotherapy**
Participants work with professional therapists and volunteers toward specific goals with measurable physical, occupational, or speech pathology outcomes
- **Therapeutic Horseback Riding**
Participants work with a team of volunteers and a certified riding instructor



EQUINE-ASSISTED THERAPY

- More than 850 programs nationwide, but currently none in Milwaukee County
 - Closest programs in Wales and Darien WI.
- Partnership with Zablocki VA Hospital to provide therapy to veterans
- Partnership with Hamilton High School to provide therapy for their special needs student population
- An initial focus will be on therapy for community members suffering from trauma



COMMUNITY ENGAGEMENT

- Publicly-accessible facility designed to bring officers and citizens together in a positive environment
- Community engagement programs coordinated by the Stables and MPD
- Program development is underway with MPS, Safe & Sound and other community organizations serving at-risk youth
- Expected to engage 5,000 kids each year



COMMUNITY ENGAGEMENT

- *Relationship Building*: Service learning program for high school students with MPD officers
- *Trust Building*: Interactive learning program for elementary and intermediate school students taught by MPD officers with class teachers
- *Community Healing*: Learning and dialogue programs for community members and MPD officers



OPPORTUNITIES FOR VOLUNTEER ENGAGEMENT



- Expected to engage over 300 community volunteers each year
- Hands-on, meaningful opportunities to assist with therapy and community engagement programs

STATUS OF FUNDRAISING



- Fundraising Goal:
 - \$5.35 million for construction
 - \$0.3 million for launch of equine-assisted therapy and community programs
- \$4.5 million raised to date
 - Fundraising efforts are ongoing
 - Start Construction – Fall 2018
 - Facility Open – Summer/Fall 2019

DEPARTMENT / USER LEGEND

- CIRCULATION
- MOUNTED PATROL
- RIDING ARENA
- SHARED
- THERAPEUTIC RIDING



