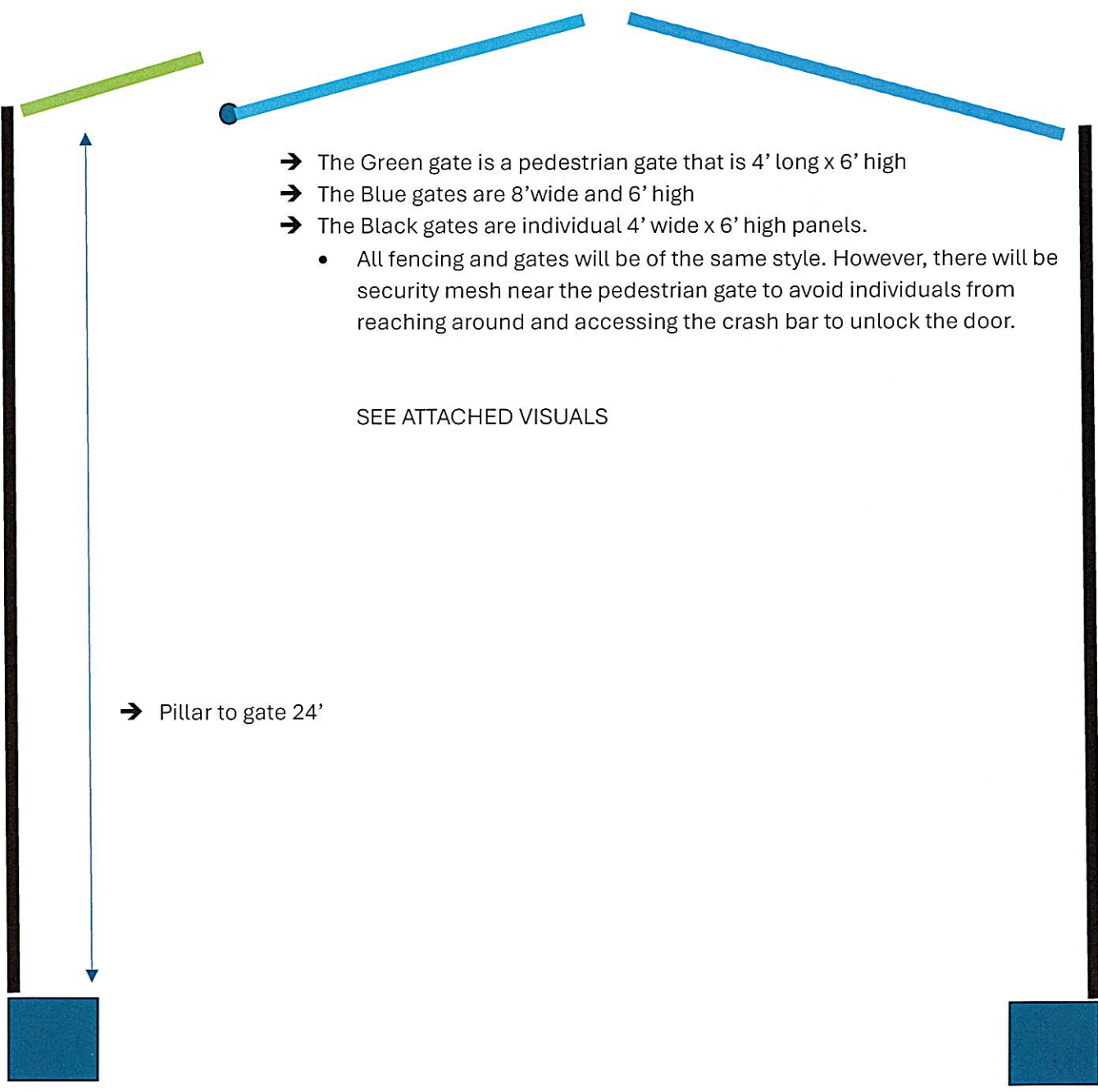
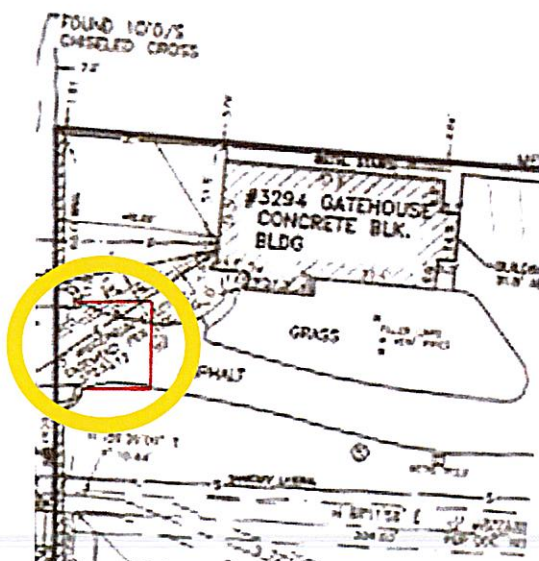


- 
- The diagram illustrates a gate structure. On the left, a thick black vertical pillar is shown. A blue double-headed arrow extends from the base of this pillar to a green horizontal line, representing a gate. To the right of the green gate, there is a blue circular dot. Further right, two blue diagonal lines meet at a point, representing another gate. On the far right, another thick black vertical pillar is shown. At the base of each black pillar is a blue square. The text and list are positioned in the upper right area of the diagram.
- The Green gate is a pedestrian gate that is 4' long x 6' high
  - The Blue gates are 8' wide and 6' high
  - The Black gates are individual 4' wide x 6' high panels.
    - All fencing and gates will be of the same style. However, there will be security mesh near the pedestrian gate to avoid individuals from reaching around and accessing the crash bar to unlock the door.

SEE ATTACHED VISUALS

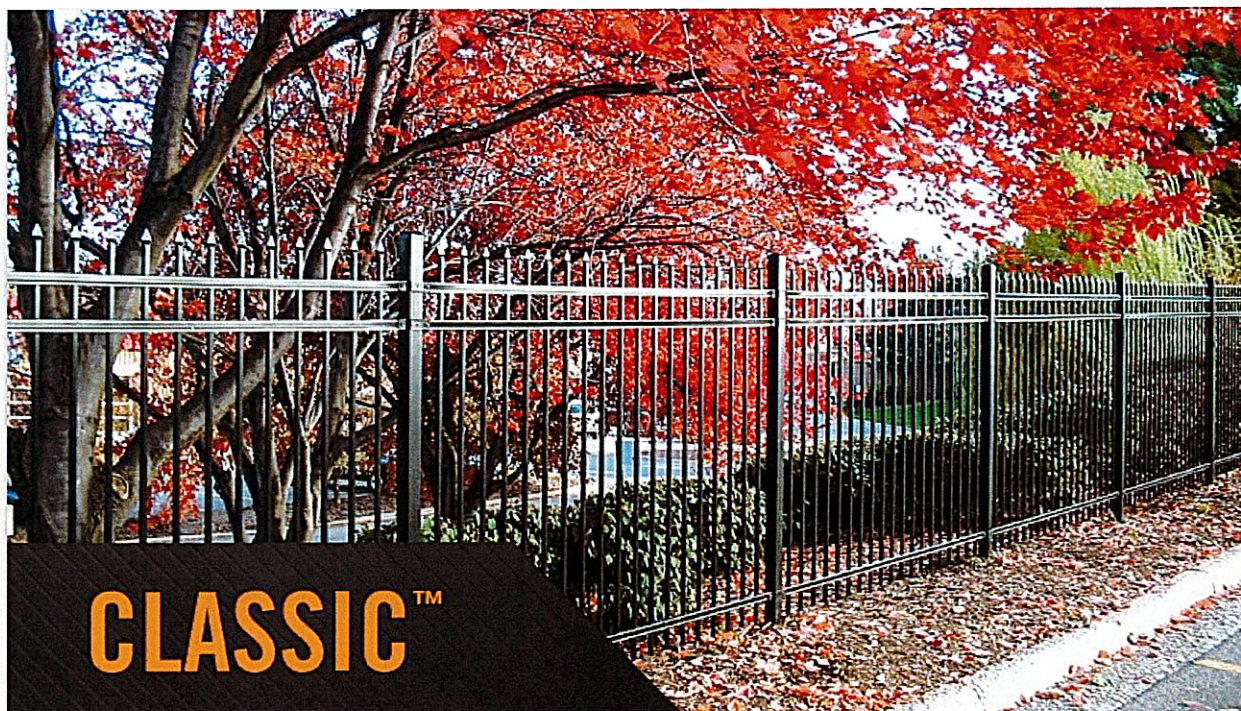
→ Pillar to gate 24'

Area of project



Wisconsin Institute of Torah Study (Vehicular gate project)

Fencing & gate material



Wisconsin Institute of Torah Study (Vehicular gate project)

Pedestrian and vehicular gate cut sheet \*of note fence and gate height will be 6"

