

Milwaukee Historic  
 Preservation  
 Commission

REVISIONS

DATE  
 October 18, 2016  
 PROJECT NUMBER  
 212615.00  
 SHEET TITLE

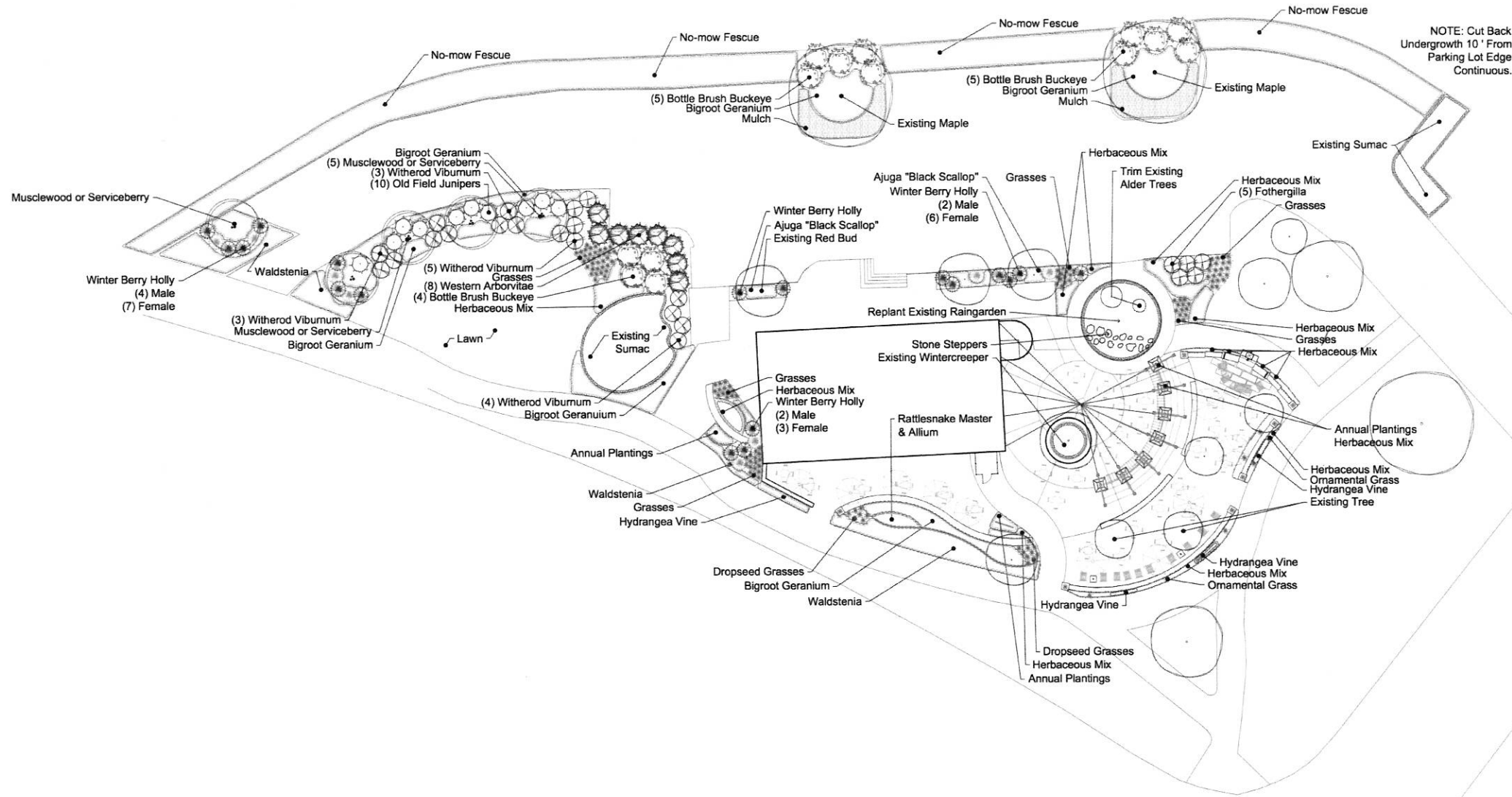
**Site Plan**

SHEET NUMBER  
**A0.0**

1 **SITE PLAN**  
 A1.0 Scale: 1/8" = 1'-0"



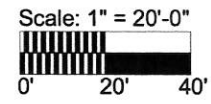
**Collectivo Lakefront  
1701 North Lincoln Memorial Drive  
Milwaukee, WI**



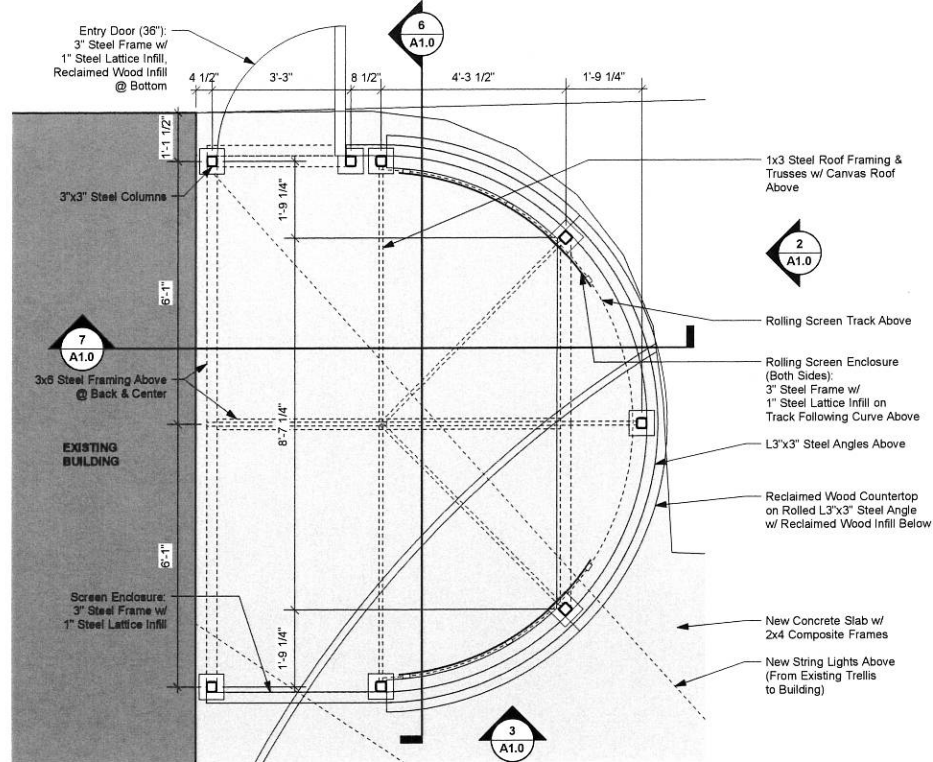
Chris Miracle PLA, ASLA  
September 22, 2016  
Revision:  
9.24.16



www.landworkswisconsin.com  
N69W25195 Indiagrass Lane  
Sussex, WI 53089  
p.262.820.2501

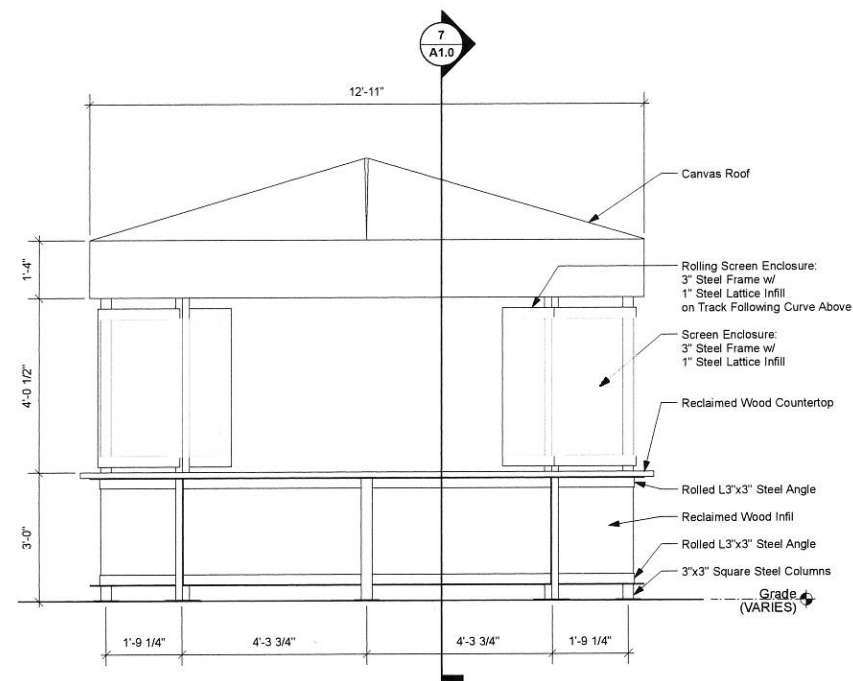


**Landscape Concept**

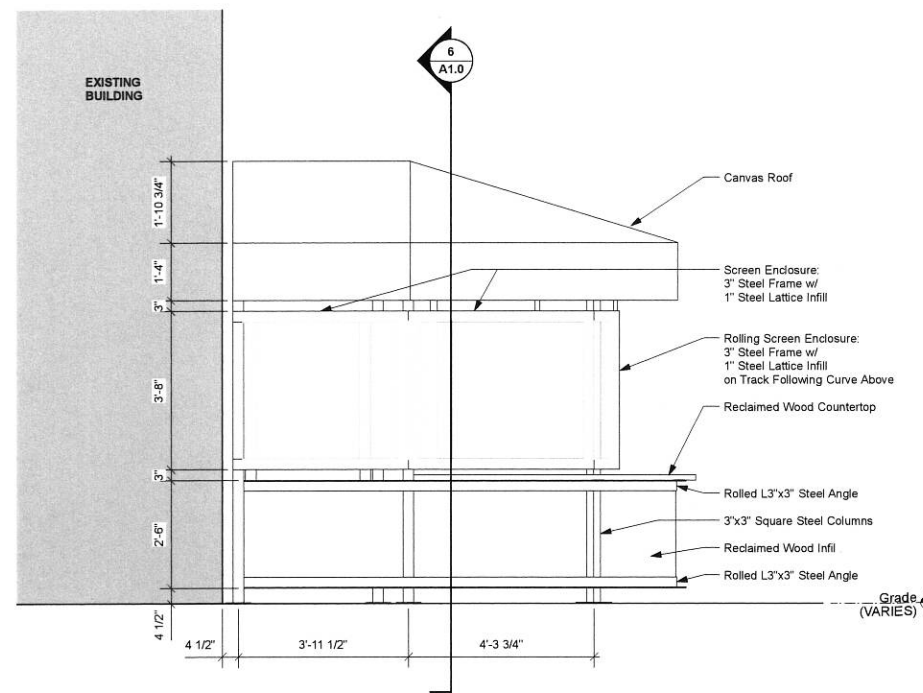


NOTE: -SET EXTERIOR COFFEE BAR 3" OFF BUILDING FACE (4 1/2" TO CL OF COLUMN)

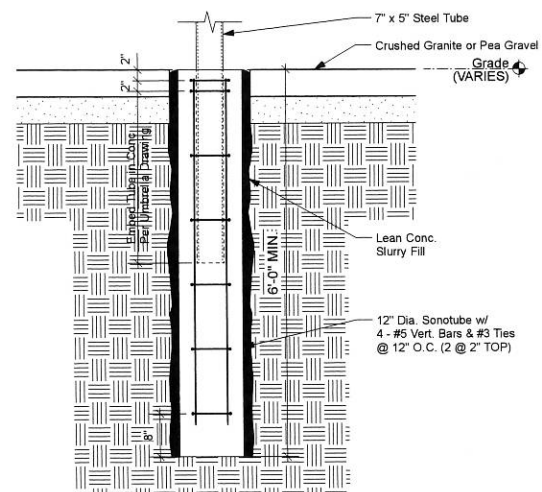
**1 EXTERIOR COFFEE BAR - ENLARGED PLAN**  
A1.0 Scale: 1/2" = 1'-0"



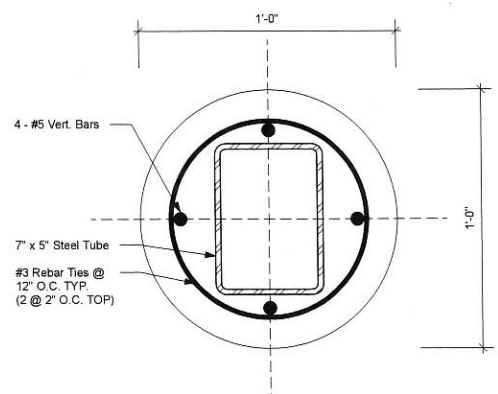
**2 EXTERIOR COFFEE BAR - ELEVATION**  
A1.0 Scale: 1/2" = 1'-0"



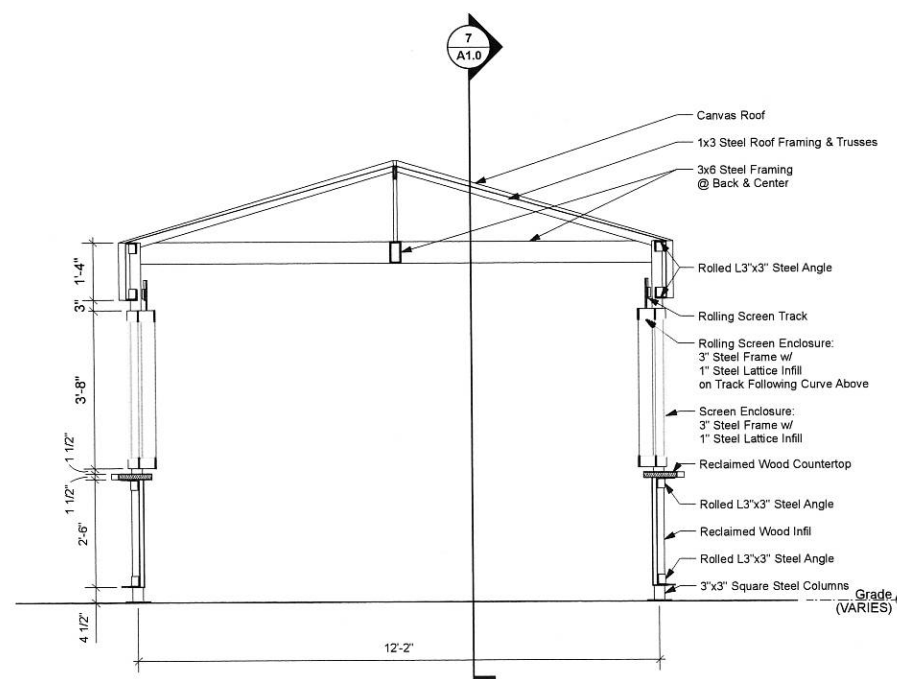
**3 EXTERIOR COFFEE BAR - ELEVATION**  
A1.0 Scale: 1/2" = 1'-0"



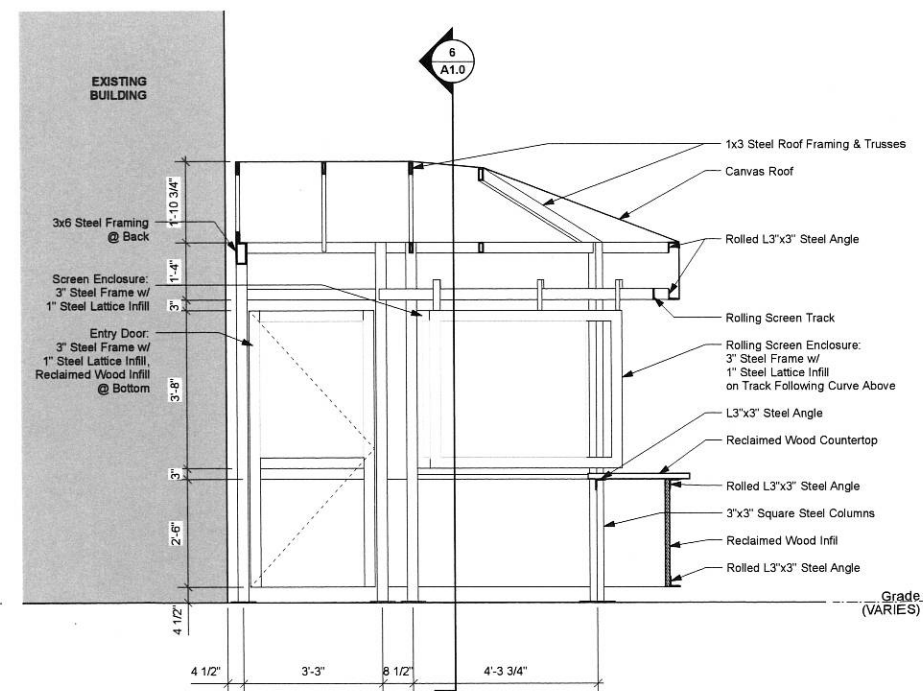
**4 EXTERIOR UMBRELLA - SECTION**  
A1.0 Scale: 3/4" = 1'-0"



**5 EXTERIOR UMBRELLA - ENLARGED PLAN**  
A1.0 Scale: 3" = 1'-0"



**6 EXTERIOR COFFEE BAR - SECTION**  
A1.0 Scale: 1/2" = 1'-0"



**7 EXTERIOR COFFEE BAR - SECTION**  
A1.0 Scale: 1/2" = 1'-0"

# TKWA

The Kubala Washatko Architects, Inc.  
W61 N617 Mequon Avenue  
Cedarburg, WI 53012  
p. 262.377.6039 | f. 262.377.2954

PROJECT

**Collectivo Lakefront -  
Outdoor Seating**

Alteration

1701 N Lincoln Memorial Dr.  
Milwaukee, WI 53202

OWNER

**COLECTIVO COFFEE  
ROASTERS**  
2999 N. Hamlet Blvd.  
Milwaukee, WI 53212  
p. 414.273.3747

Milwaukee Historic  
Preservation  
Commission

REVISIONS


DATE

October 18, 2016

PROJECT NUMBER

212615.00

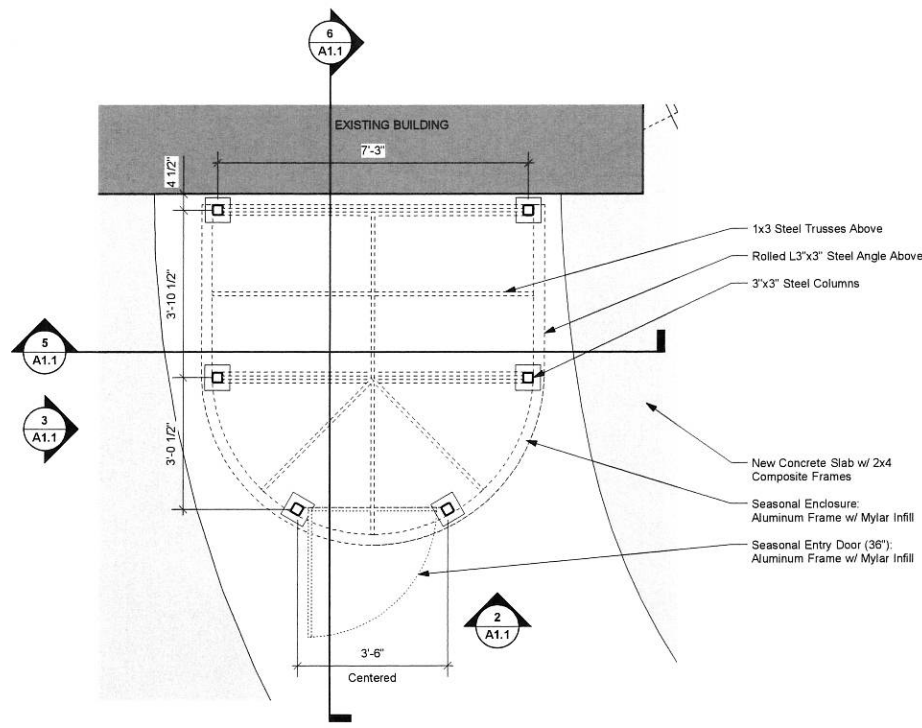
SHEET TITLE

**Exterior Coffee  
Bar & Umbrella  
Details**

SHEET NUMBER

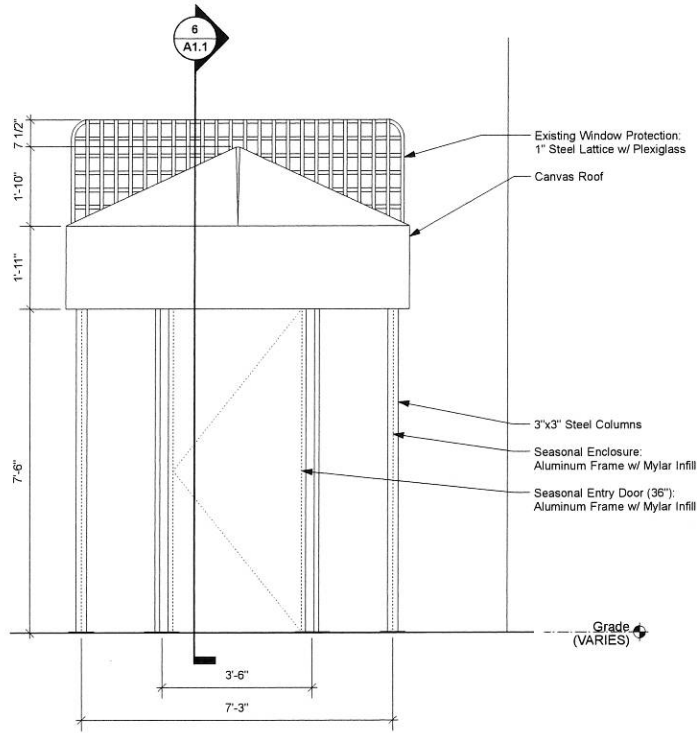
# A1.0

Copyright © 2016 The Kubala Washatko Architects, Inc.  
All Rights Reserved

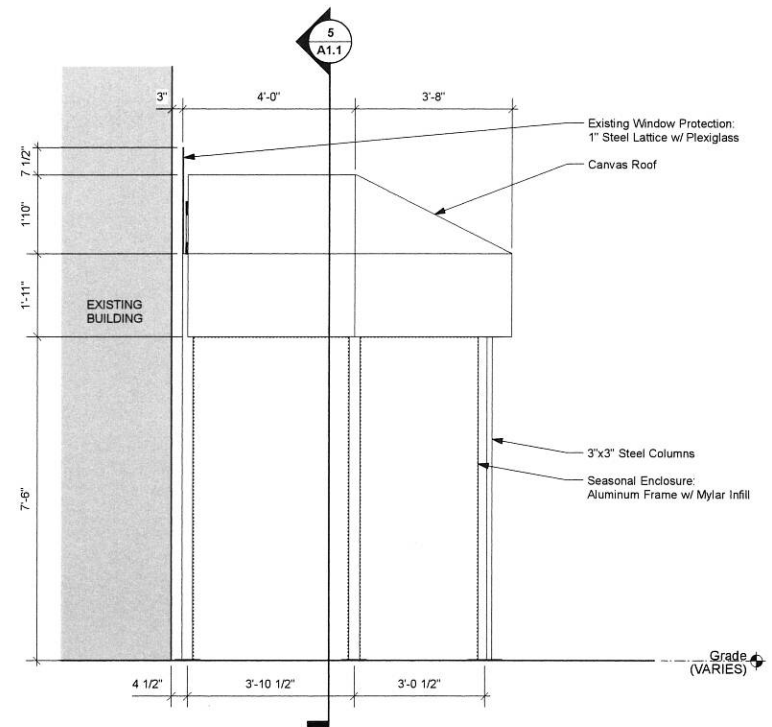


NOTE: -VESTIBULE TO BE CENTERED ON EXISTING ENTRY DOOR  
-SET VESTIBULE 3" OFF BUILDING FACE (4 1/2" TO CL OF COLUMN)

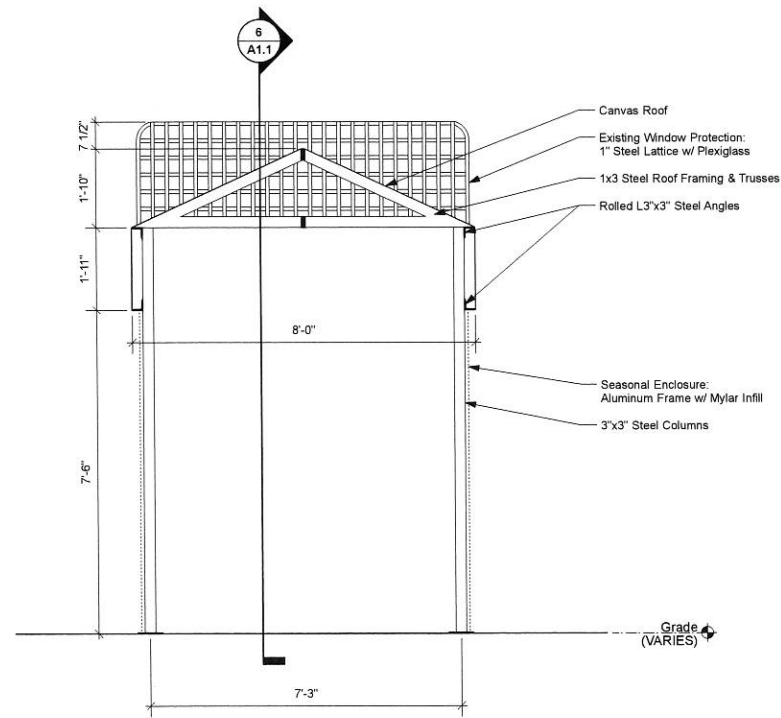
**1 SEASONAL VESTIBULE - ENLARGED PLAN**  
A1.1 Scale: 1/2" = 1'-0"



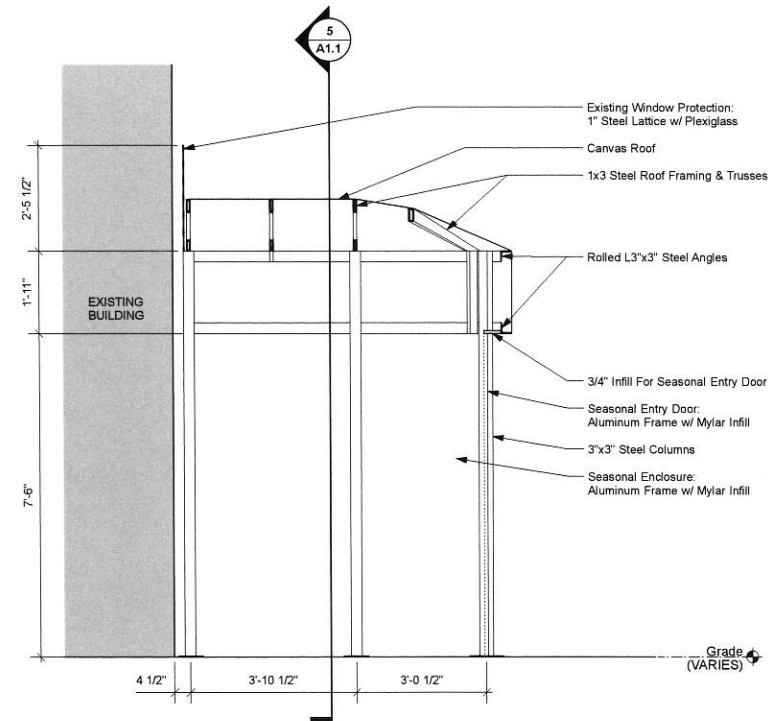
**2 SEASONAL VESTIBULE - FRONT ELEVATION**  
A1.1 Scale: 1/2" = 1'-0"



**3 SEASONAL VESTIBULE - SIDE ELEVATION**  
A1.1 Scale: 1/2" = 1'-0"



**5 SEASONAL VESTIBULE - TRANSVERSE SECTION**  
A1.1 Scale: 1/2" = 1'-0"



**6 SEASONAL VESTIBULE - LONGITUDINAL SECTION**  
A1.1 Scale: 1/2" = 1'-0"

**4 NOT USED**  
A1.1

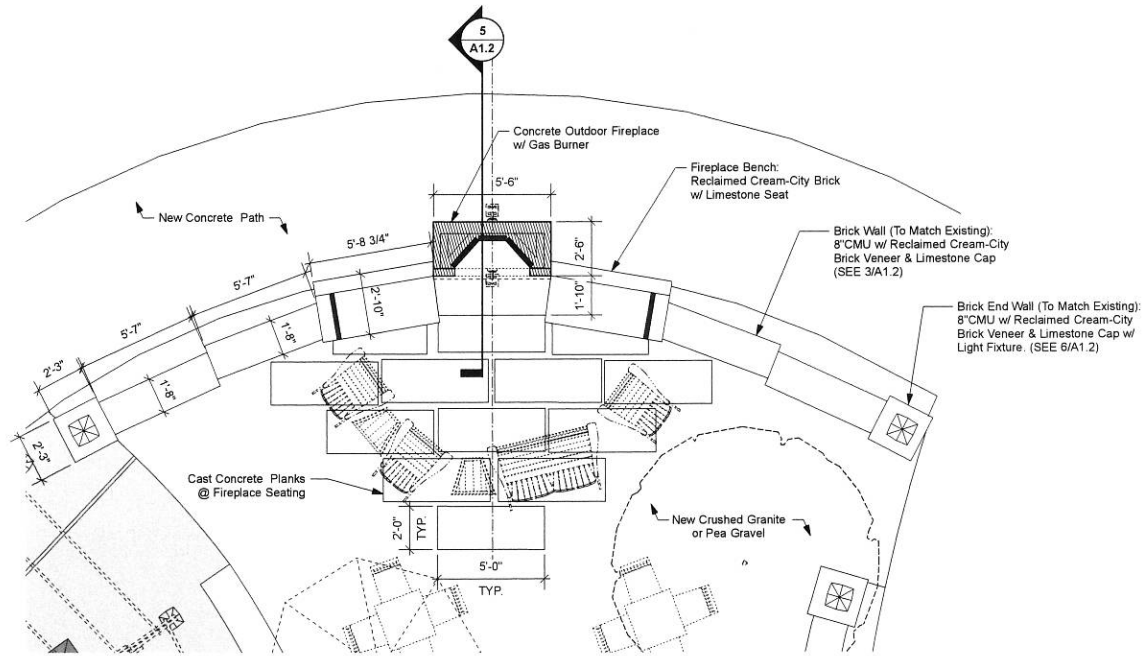
REVISIONS

DATE  
October 18, 2016  
PROJECT NUMBER  
212615.00

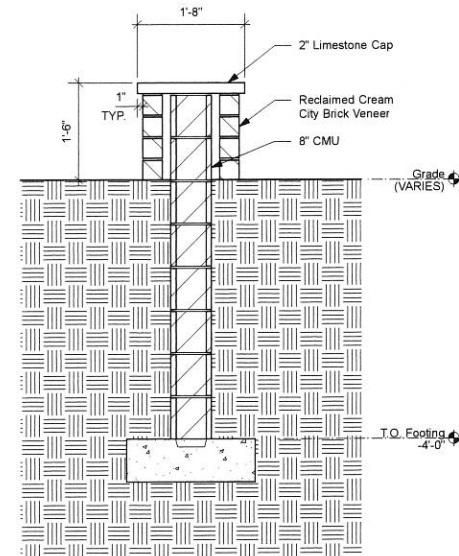
SHEET TITLE  
**Seasonal  
Vestibule  
Details**

SHEET NUMBER

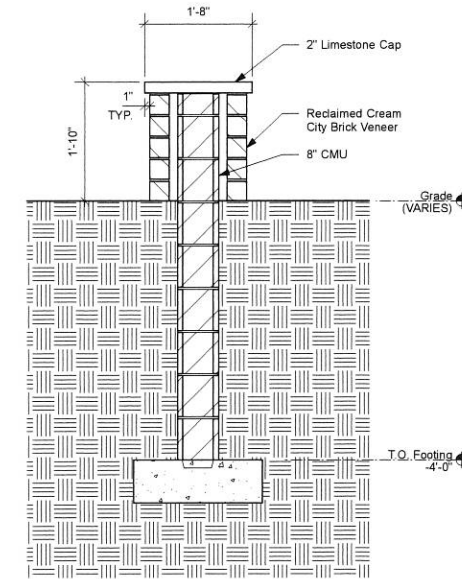
# A1.1



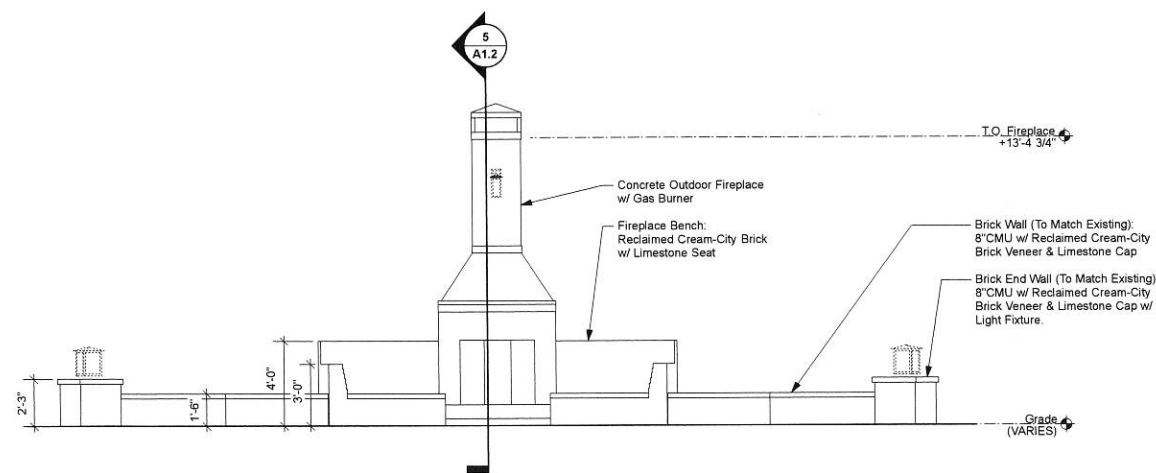
1 EXTERIOR FIREPLACE - ENLARGED PLAN  
A1.2 Scale: 1/4" = 1'-0"



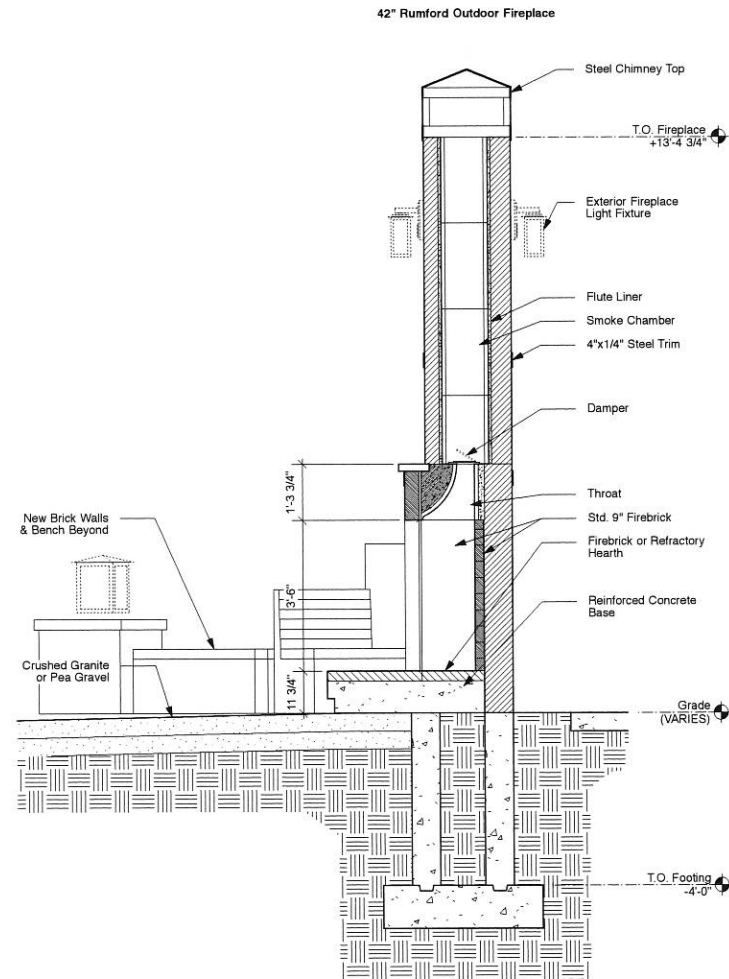
2 LOW EXTERIOR BRICK WALL - SECTION  
A1.2 Scale: 3/4" = 1'-0"



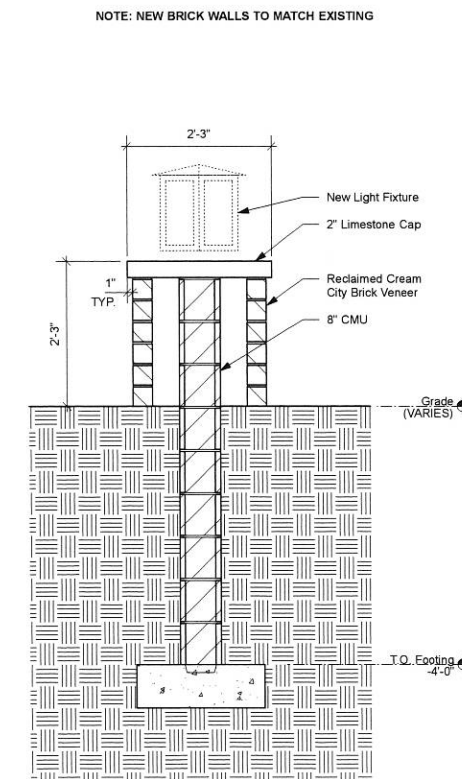
3 TALL EXTERIOR BRICK WALL - SECTION  
A1.2 Scale: 3/4" = 1'-0"



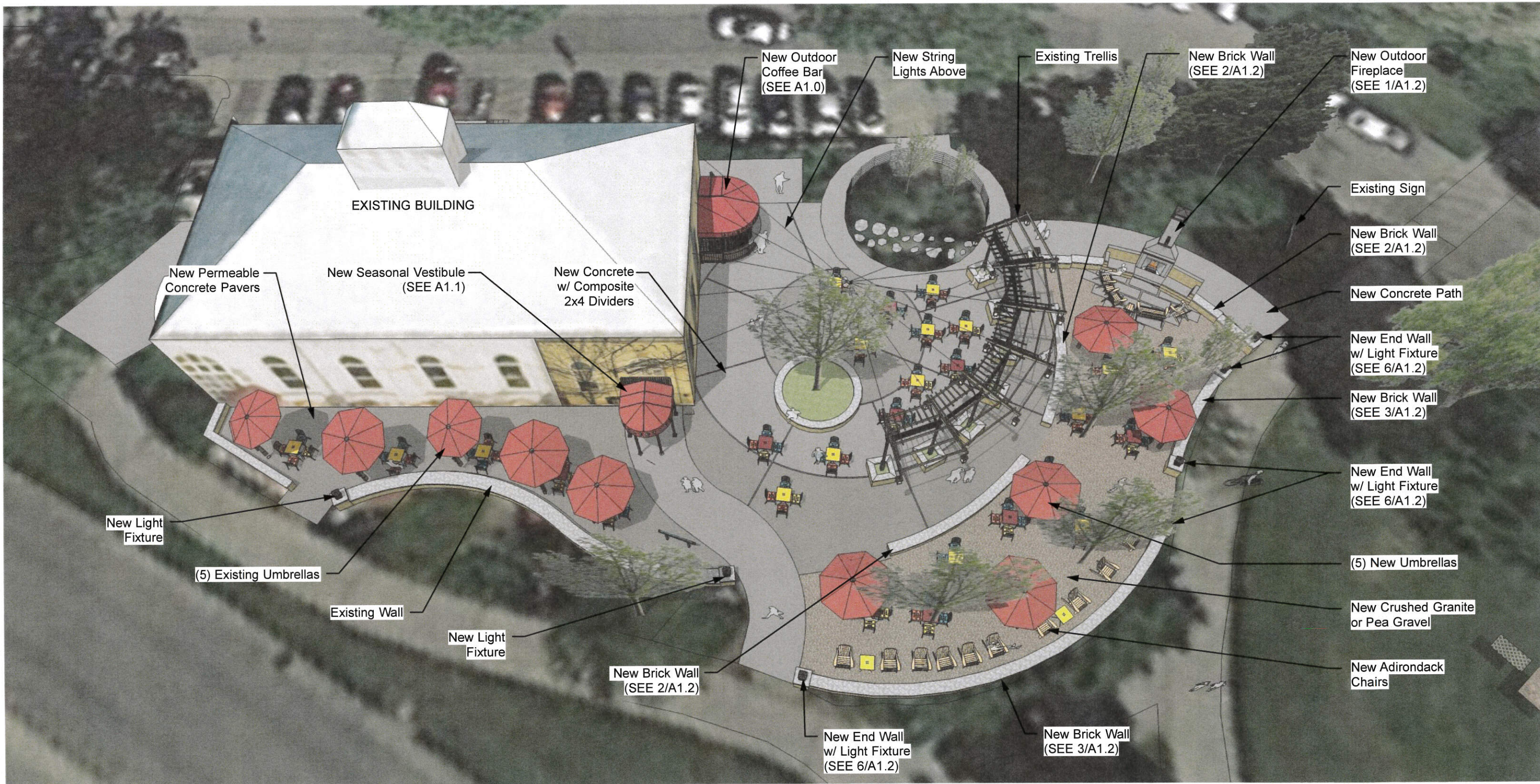
4 EXTERIOR FIREPLACE - ELEVATION  
A1.2 Scale: 1/4" = 1'-0"



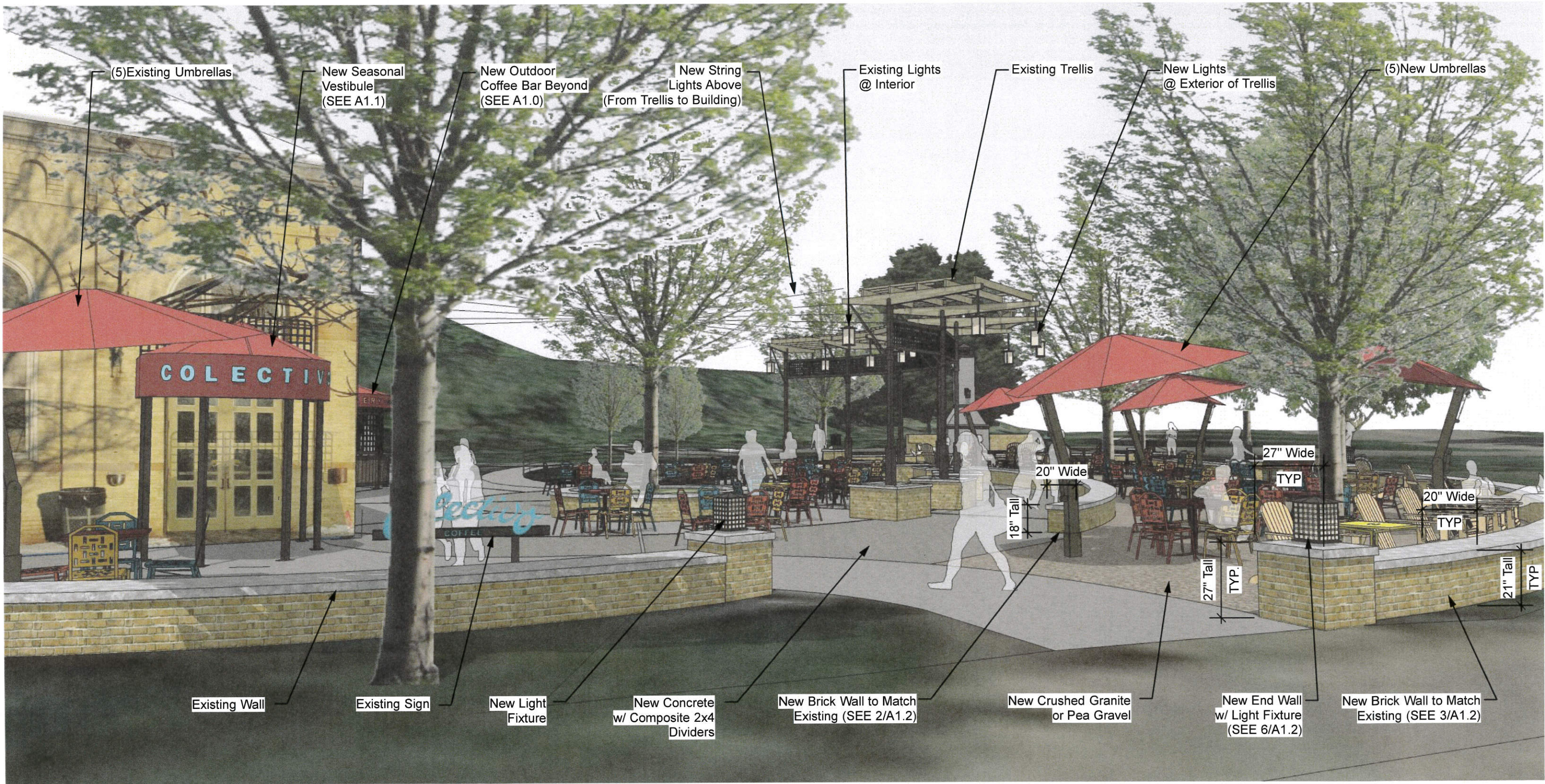
5 EXTERIOR FIREPLACE - SECTION  
A1.2 Scale: 1/2" = 1'-0"



6 EXTERIOR END OF WALL - SECTION  
A1.2 Scale: 3/4" = 1'-0"



1 **AERIAL VIEW**  
A2.0 Scale: NTS

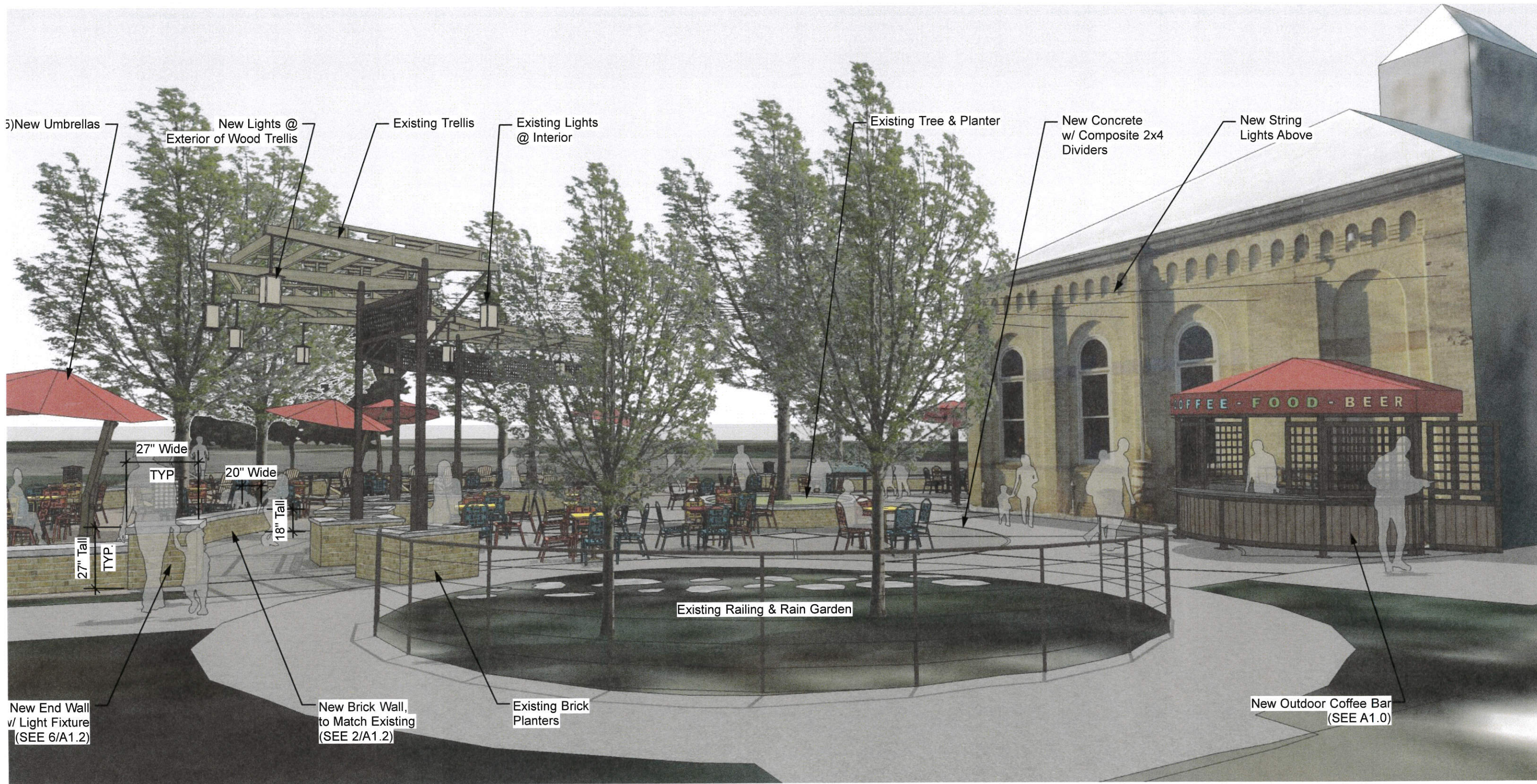


1 **VIEW FROM LINCOLN MEMORIAL DR. LOOKING NORTH**  
 A2.1 Scale: NTS



1 **VIEW FROM LAFAYETTE RD. LOOKING SOUTH**  
 A2.2 Scale: NTS





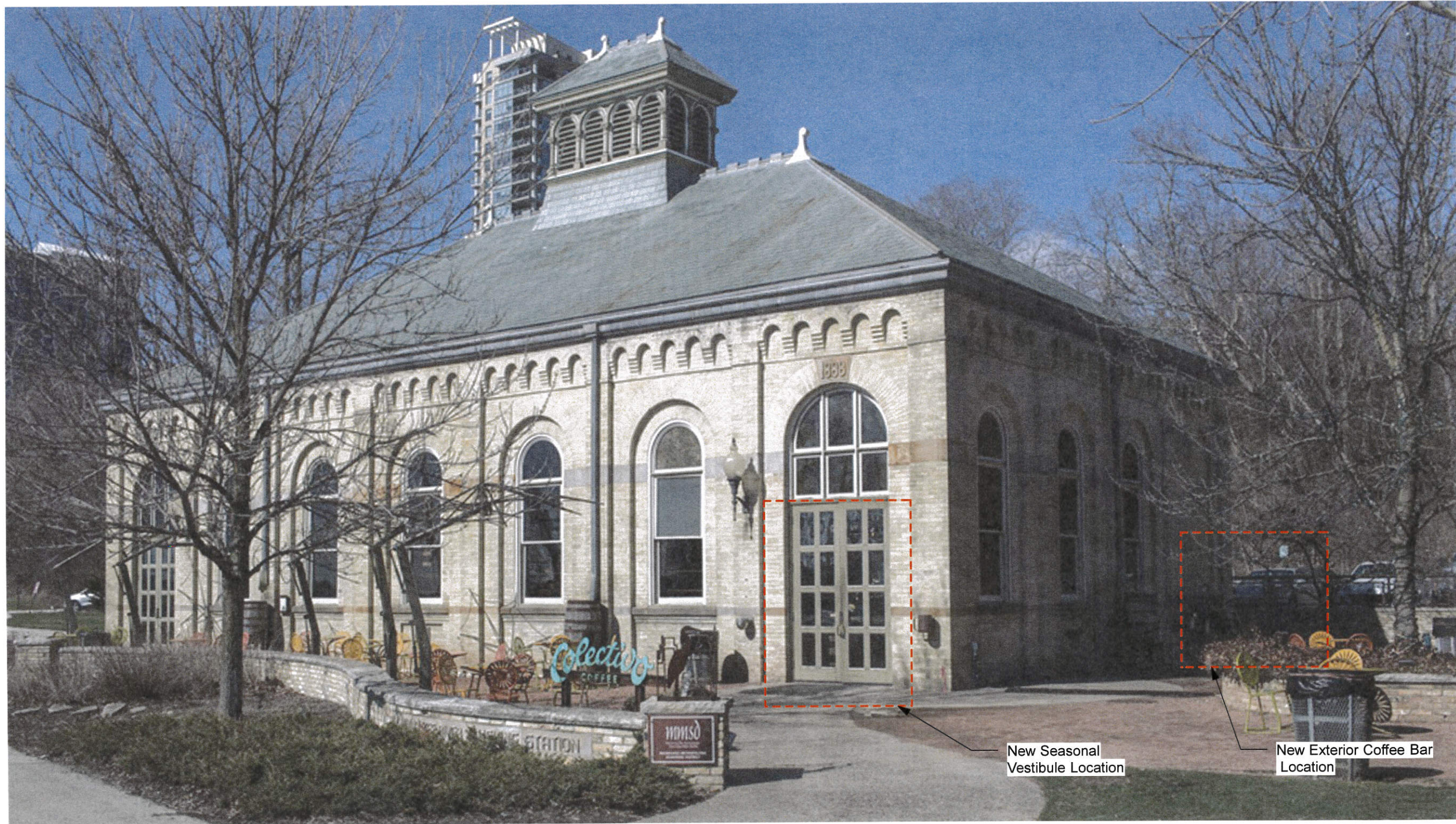
1  
A2.3

**VIEW FROM PARKING LOOKING EAST**

Scale: NTS

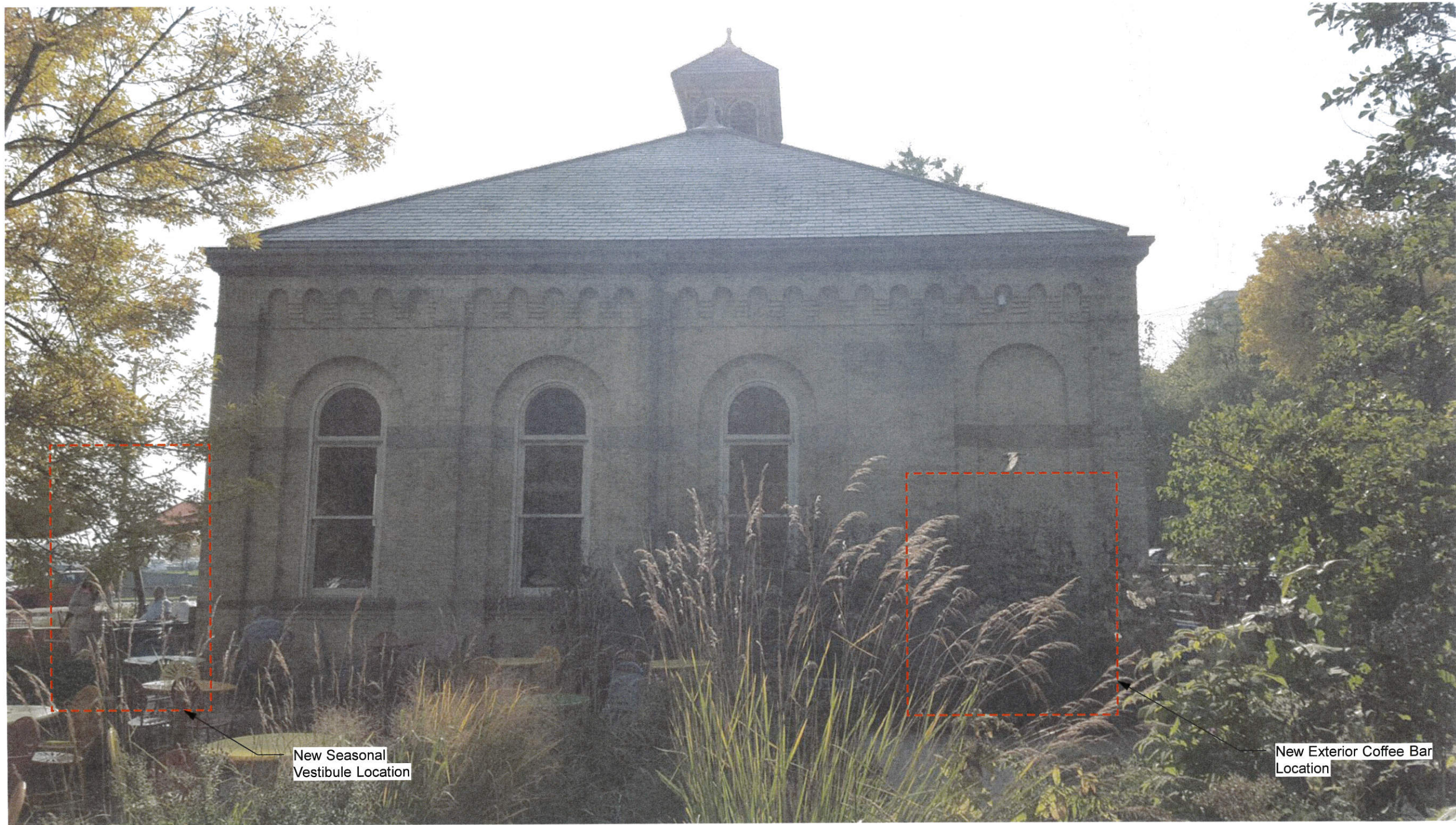


**1** **OUTDOOR FIREPLACE**  
 A2.4 Scale: NTS



NOTE: ONLY LANDSCAPING IMPROVEMENTS, NO ALTERATIONS TO BUILDING.  
 NEW VESTIBULE & EXTERIOR COFFEE BAR TO BE FREE STANDING  
 STRUCTURES.

**EAST & NORTH ELEVATION**

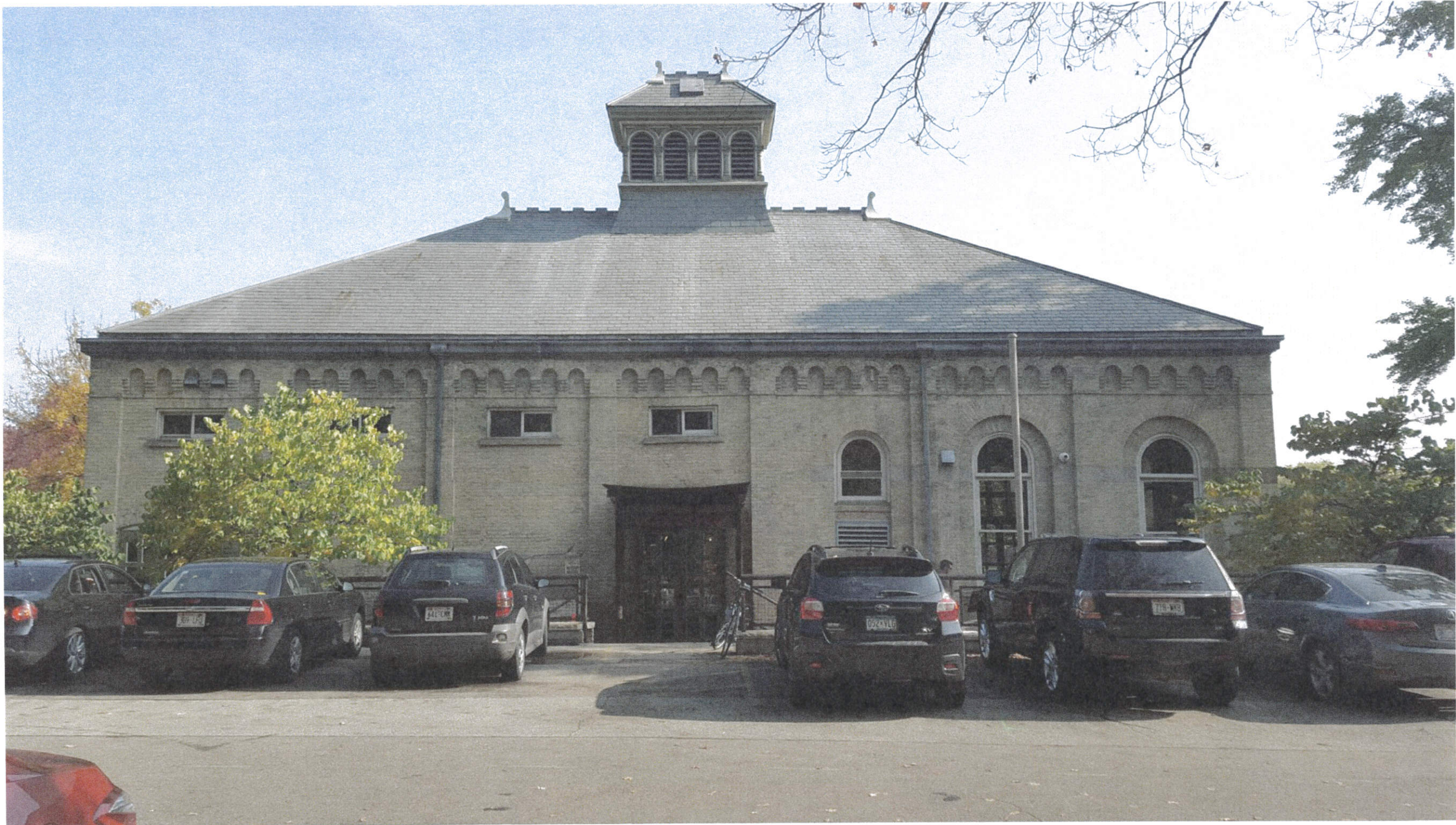


New Seasonal  
Vestibule Location

New Exterior Coffee Bar  
Location

NOTE: ONLY LANDSCAPING IMPROVEMENTS , NO ALTERATIONS TO BUILDING.  
NEW VESTIBULE & EXTERIOR COFFEE BAR TO BE FREE STANDING  
STRUCTURES.

## NORTH ELEVATION



NOTE: ONLY LANDSCAPING IMPROVEMENTS, NO ALTERATIONS TO BUILDING

## WEST ELEVATION



NOTE: ONLY LANDSCAPING IMPROVEMENTS, NO ALTERATIONS TO BUILDING

## SOUTH ELEVATION