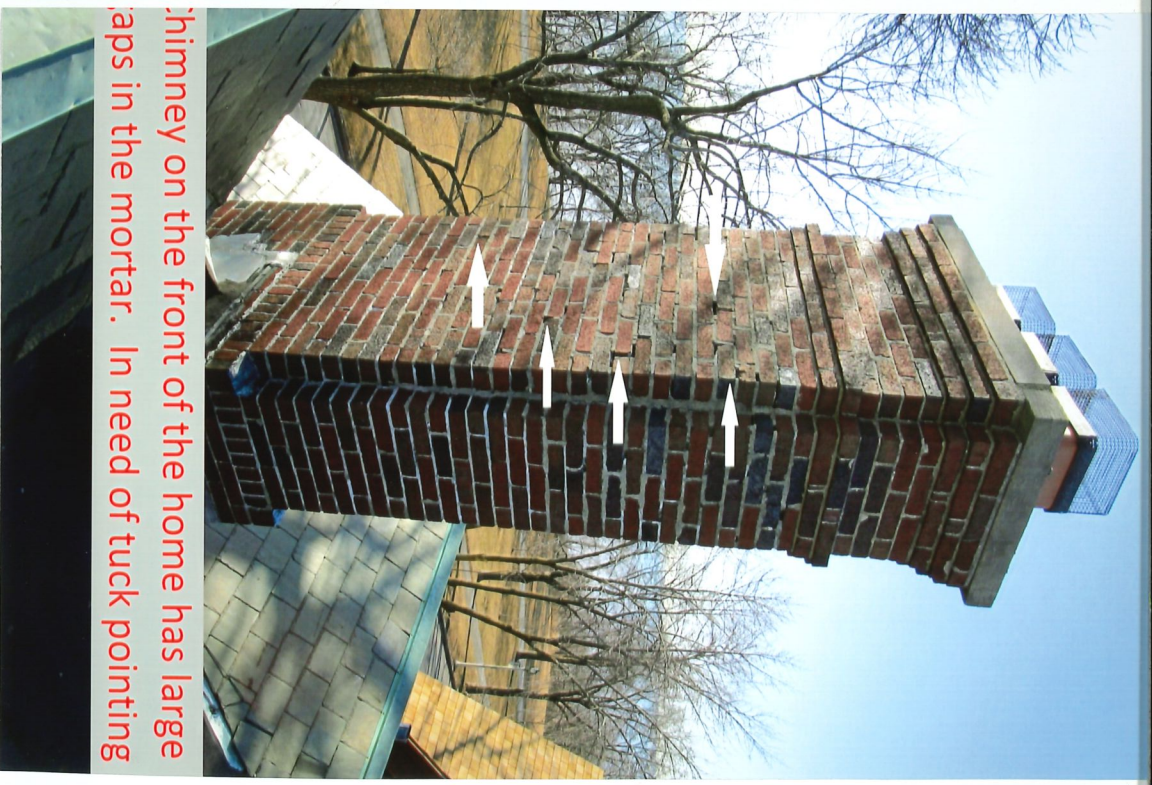
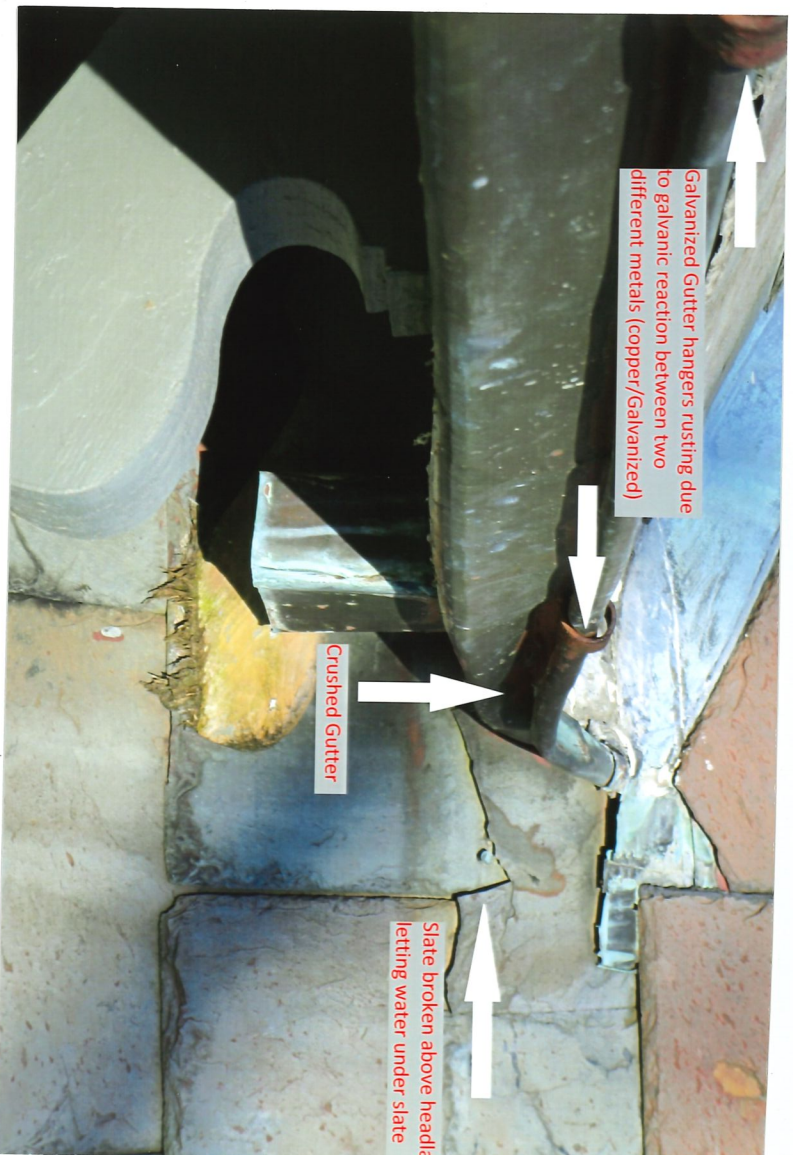


Front chimney saddle corners of flat roof are beginning to open. Possible water



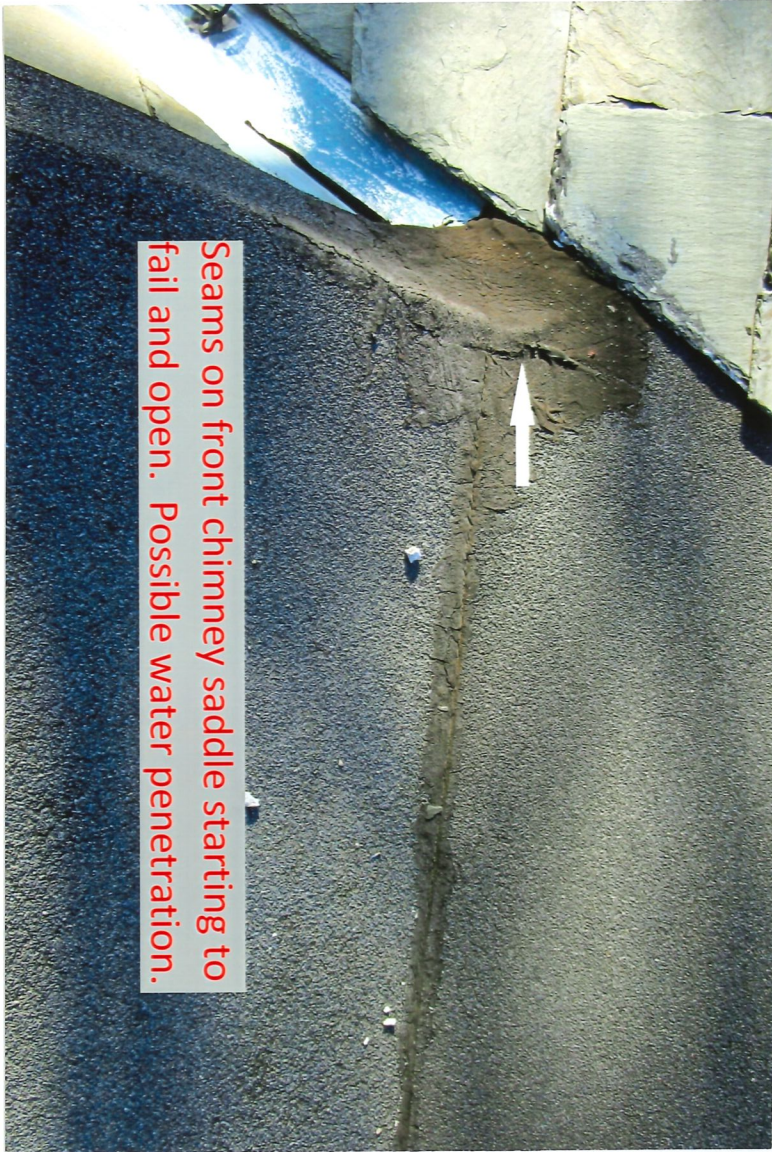
Chimney on the front of the home has large gaps in the mortar. In need of tuck pointing



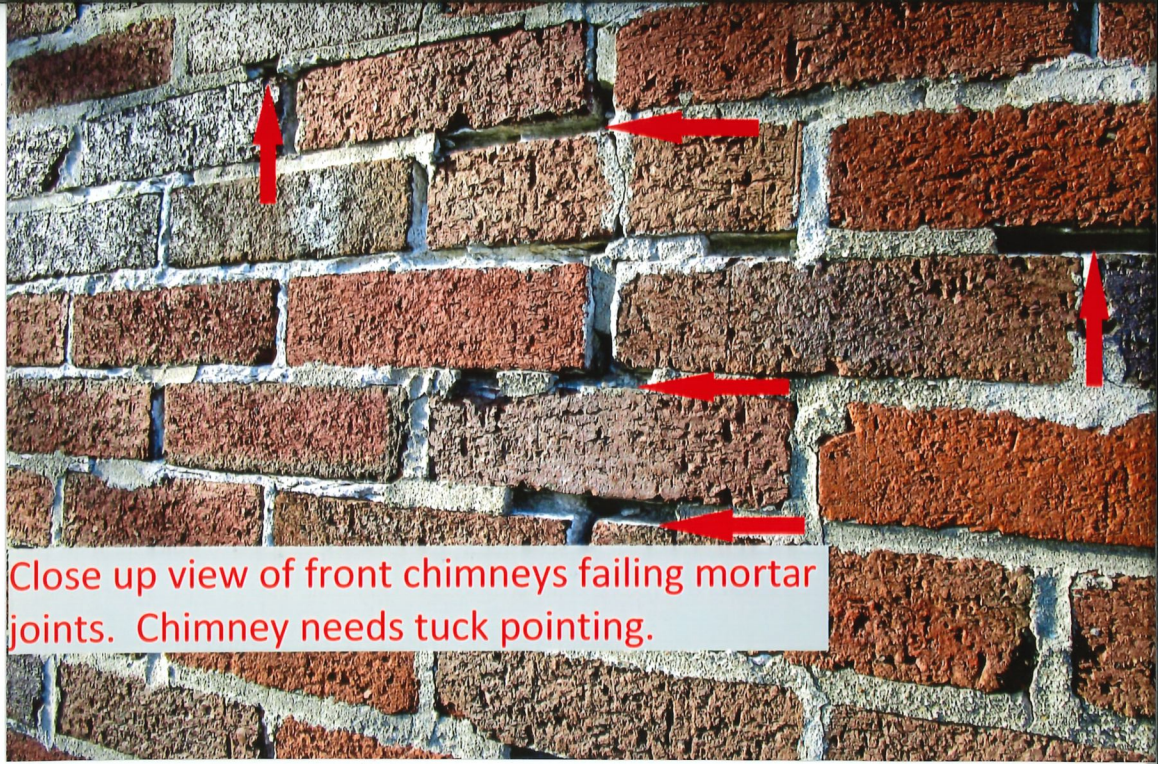
Galvanized gutter hangers rusting due to galvanic reaction between two different metals (copper/Galvanized)

Crushed Gutter

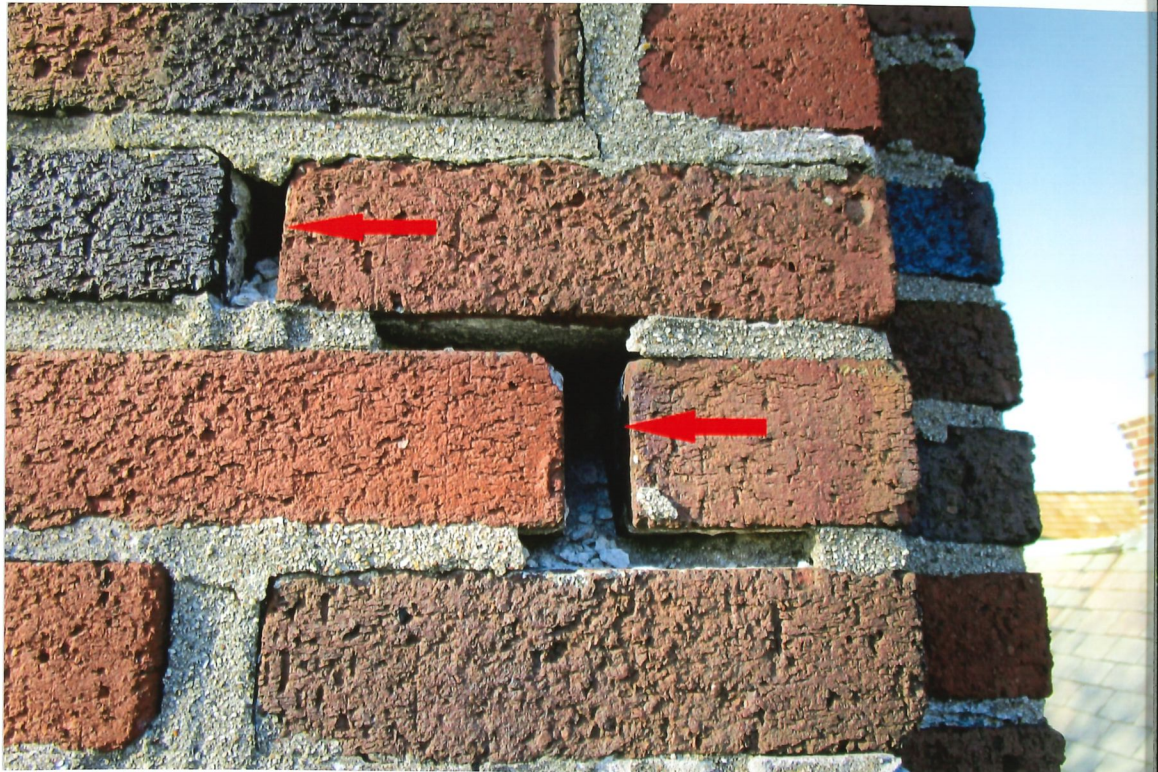
Slate broken above headliner letting water under slate



Seams on front chimney saddle starting to fail and open. Possible water penetration.



Close up view of front chimneys failing mortar joints. Chimney needs tuck pointing.





Missing slate at ridge

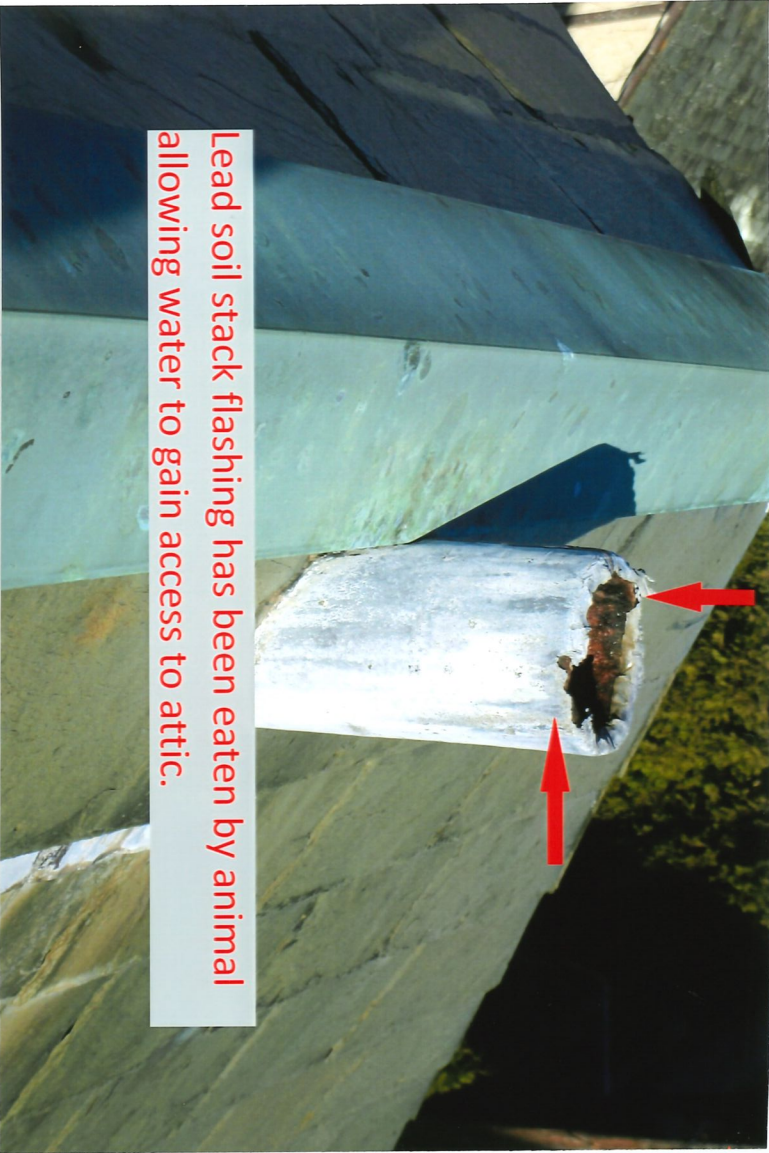


Caulking on parapet cracking and letting water into the wall below. Counter flashing coming loose from



Mortar is falling out. North parapet wall needs to be re-tuckpointed. Caulk joints on the top of the parapet walls failing and should have copper caps installed over joints.

Lead soil stack flashing has been eaten by animal allowing water to gain access to attic.



Cracked and broken slate through out roof.



Broken and missing slate though out roof.

