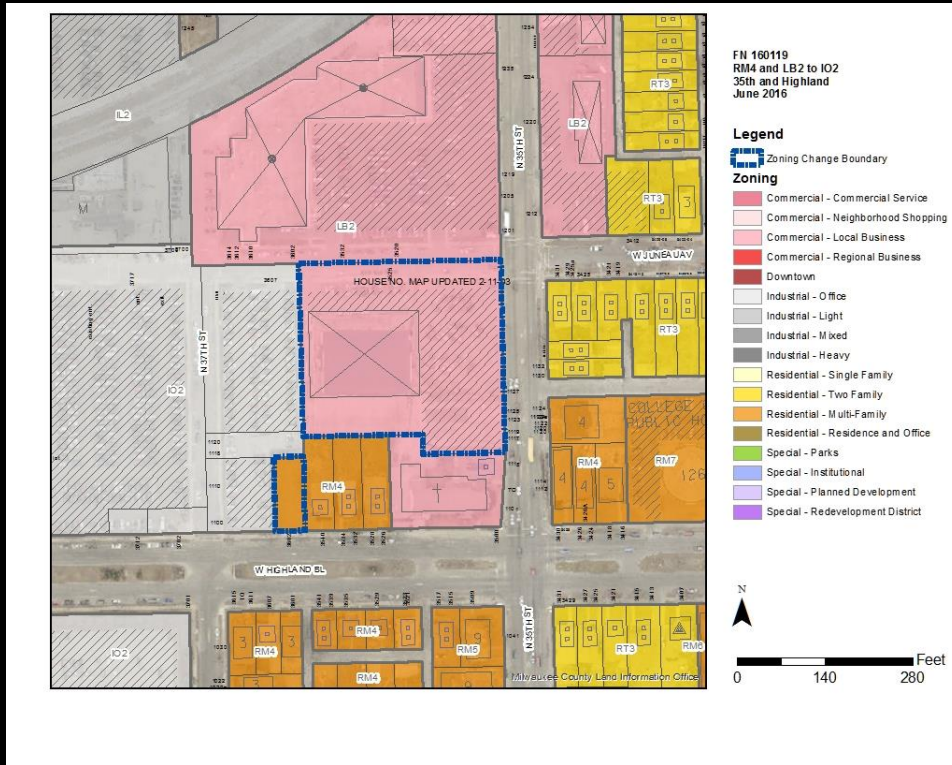


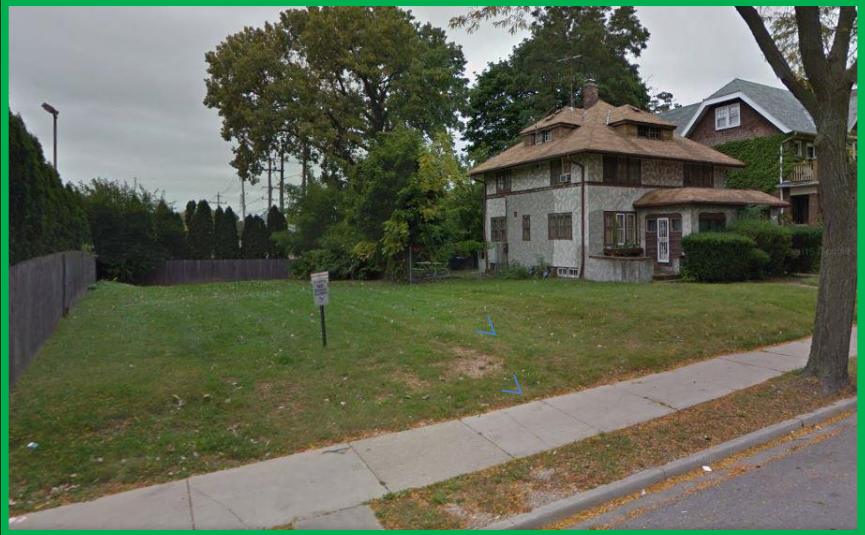
File No. 160119. A substitute ordinance relating to the change in zoning from Multi-Family Residential and Local Business to Industrial-Office for the properties located at 3602 West Highland Boulevard and 1127 North 35th Street, on the north side of West Highland Boulevard and west of North 35th Street, in the 15th Aldermanic District.



File No. 160119. Site Context Photos, 3602 West Highland Boulevard .



View from North 37th Street, looking across an existing parking lot

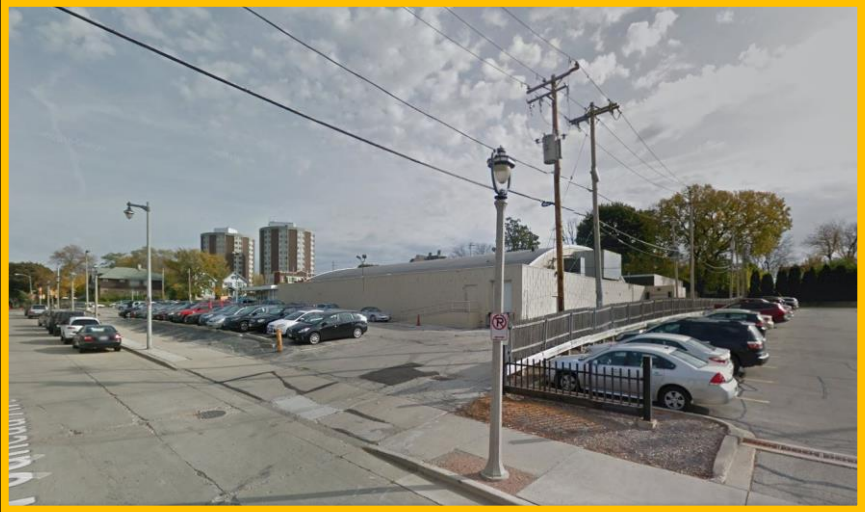


View from West Highland Boulevard, looking northeast

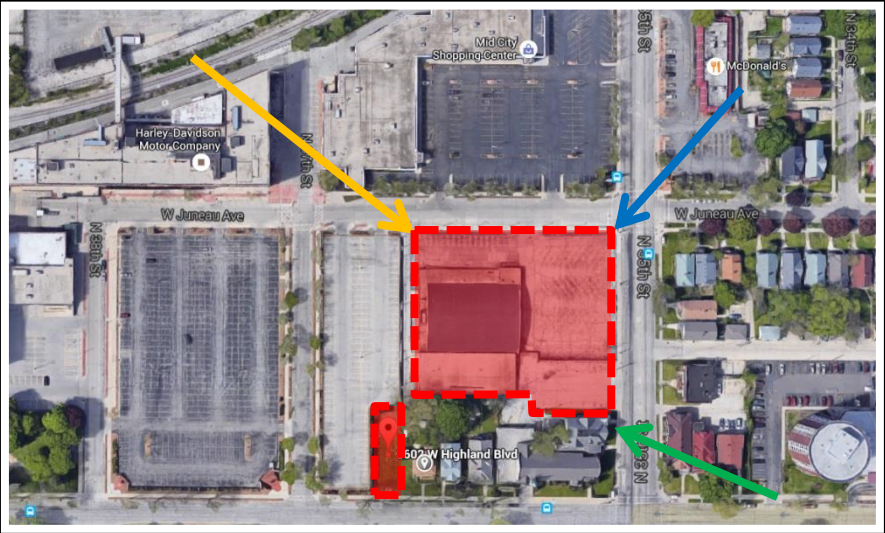


View from West Highland Boulevard, looking northwest

File No. 160119. Site Context Photos, 1127 North 35th Street.



View from West Juneau Avenue, looking southeast

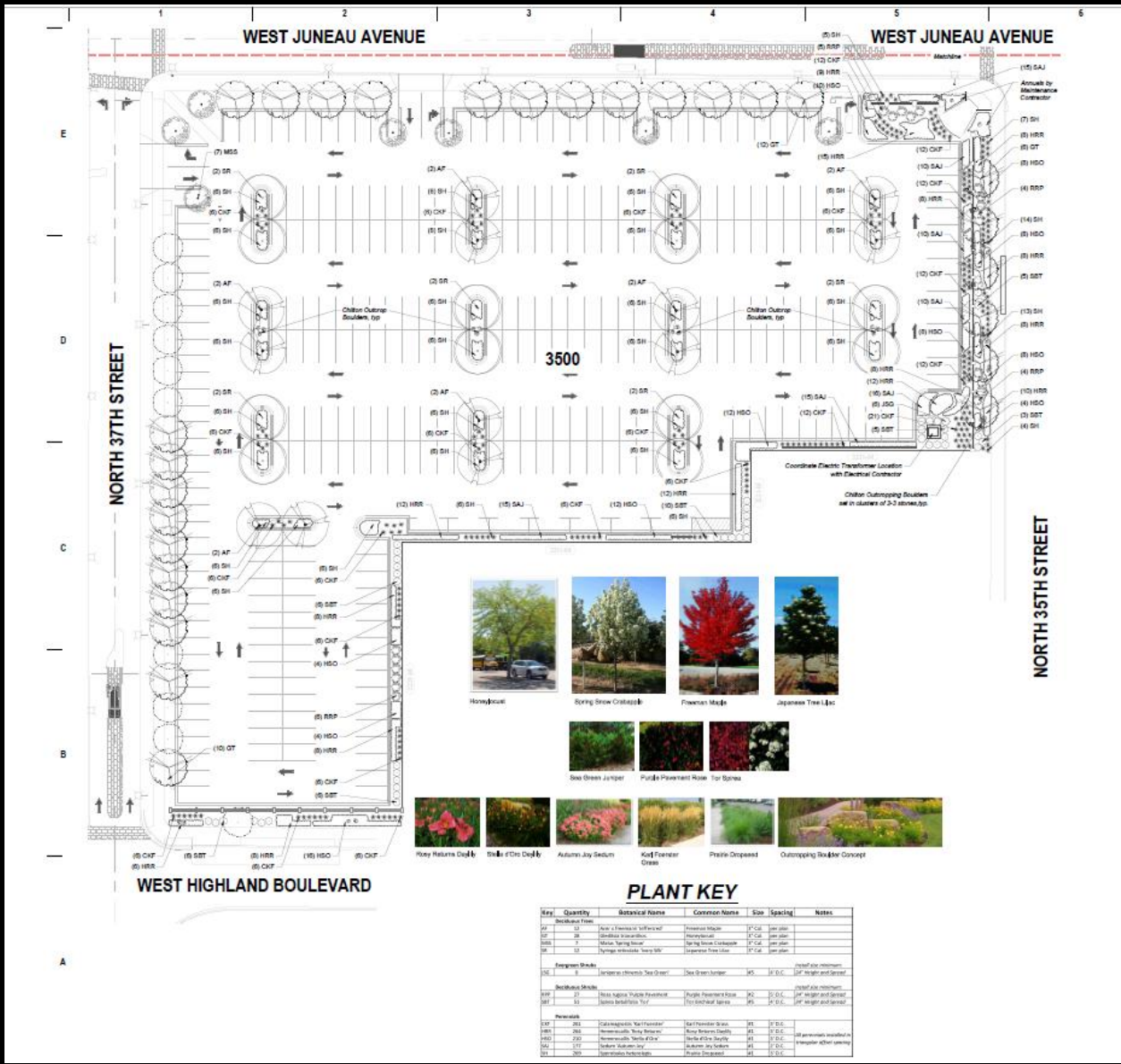


View from North 35th Street, looking northwest



View from North 35th Street, looking southeast

File No. 160119. Landscape plan – for information purposes only.



PLANT KEY

Key	Quantity	Botanical Name	Common Name	Size	Spacing	Notes
Deciduous Trees						
AF	12	Aster	Flowering Aster	8' x 10'	10' x 10'	Plant after installation
SH	20	Shrub	Shrub	8' x 10'	10' x 10'	Plant after installation
SR	7	Shrub	Shrub	8' x 10'	10' x 10'	Plant after installation
SAU	12	Shrub	Shrub	8' x 10'	10' x 10'	Plant after installation
Perennials						
CXP	20	Shrub	Shrub	8' x 10'	10' x 10'	Plant after installation
HRR	20	Shrub	Shrub	8' x 10'	10' x 10'	Plant after installation
HCO	20	Shrub	Shrub	8' x 10'	10' x 10'	Plant after installation
SST	20	Shrub	Shrub	8' x 10'	10' x 10'	Plant after installation
Other						
DT	12	Shrub	Shrub	8' x 10'	10' x 10'	Plant after installation
RRP	4	Shrub	Shrub	8' x 10'	10' x 10'	Plant after installation
HSD	8	Shrub	Shrub	8' x 10'	10' x 10'	Plant after installation
OT	10	Shrub	Shrub	8' x 10'	10' x 10'	Plant after installation