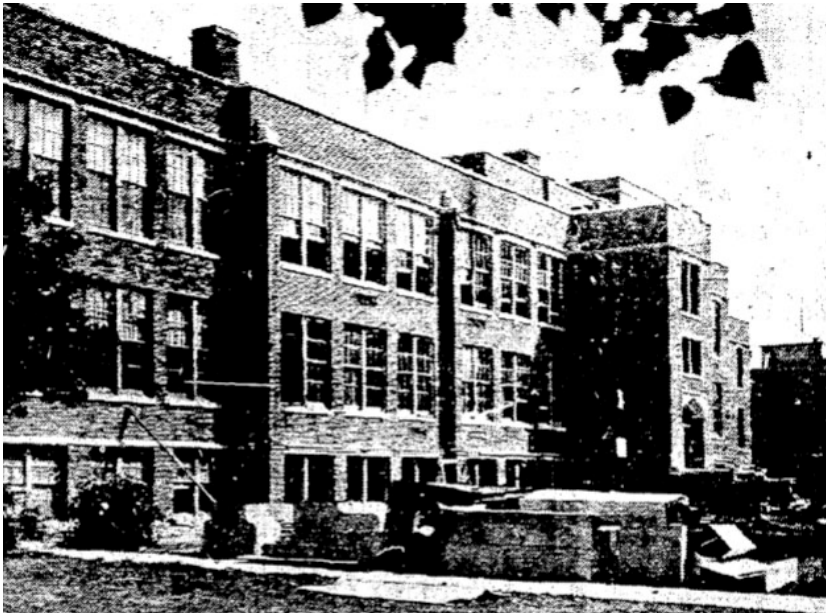
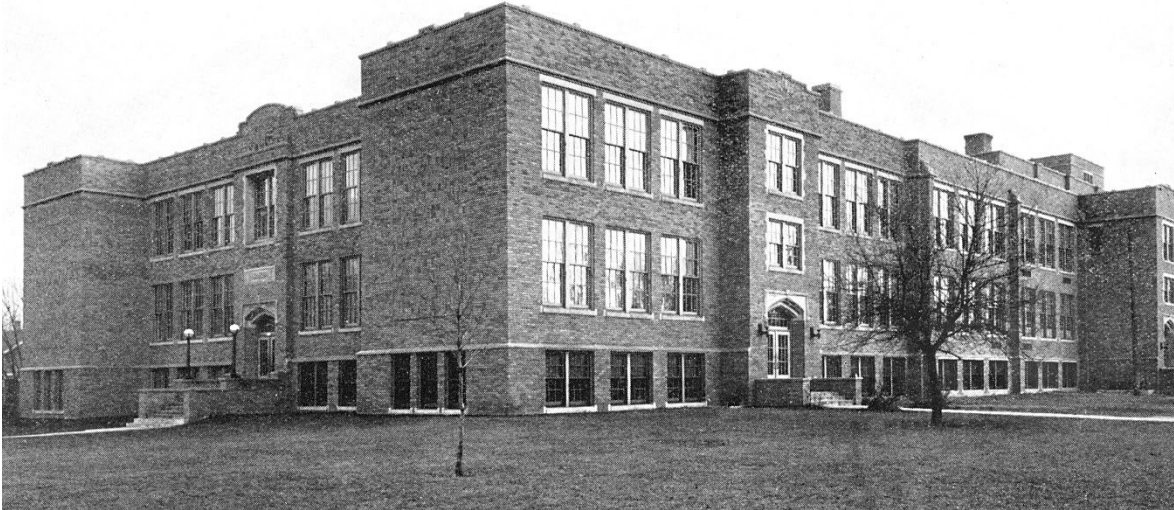




North Milwaukee High School
5372 N. 37th Street, Milwaukee, WI
National Register Nomination

North Milwaukee High School



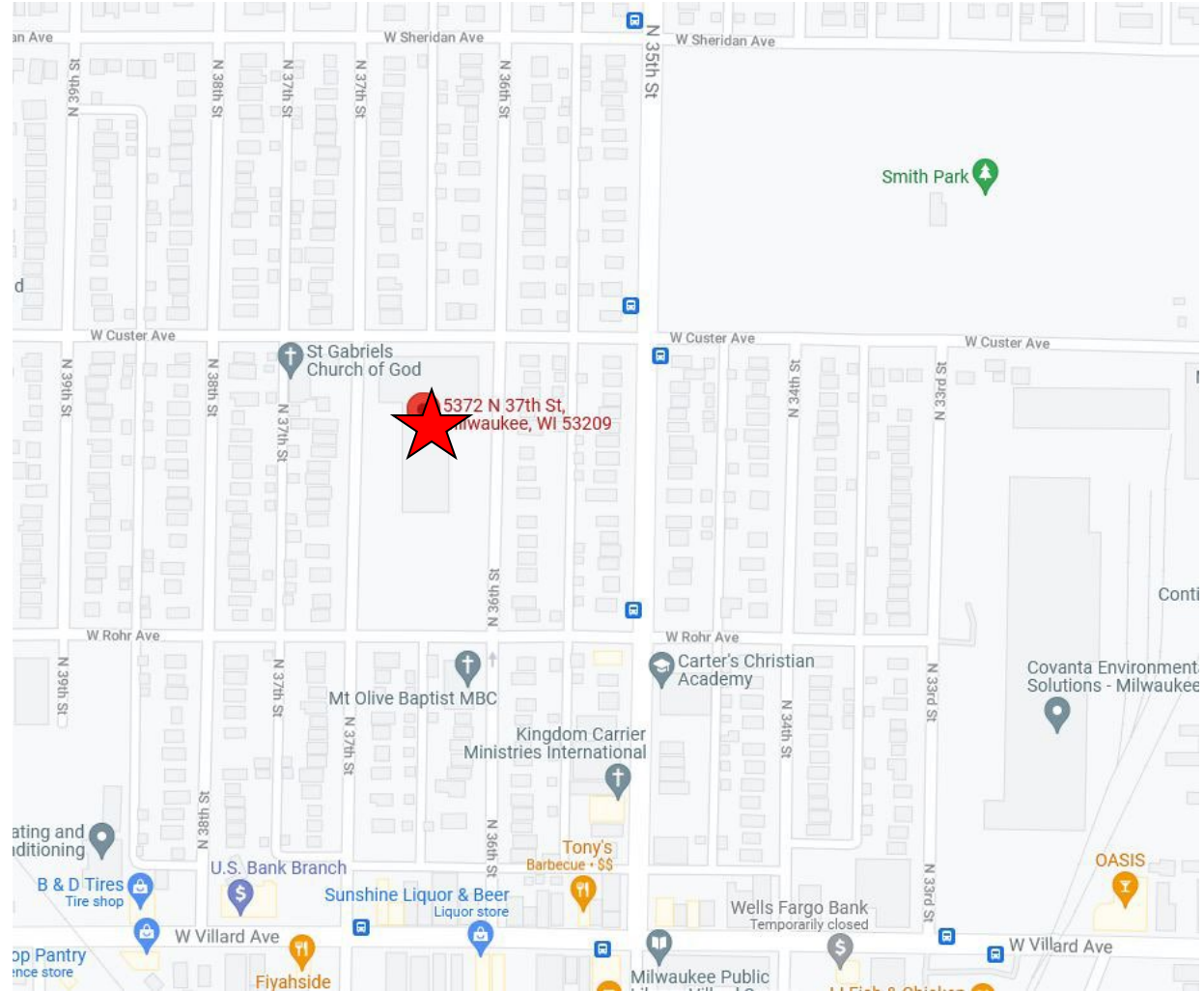
**5372 N. 37th Street
Milwaukee, WI**

**Architects: Van Ryn
and De Gelleke (1924
and 1929) and
Grassold-Johnson &
Associates (1956)**

**Year of Construction:
1924 with additions in
1929 and 1956**

**Nominated under:
NR Criterion C
for
Architecture**

**Period of
Significance:
1924-1929**

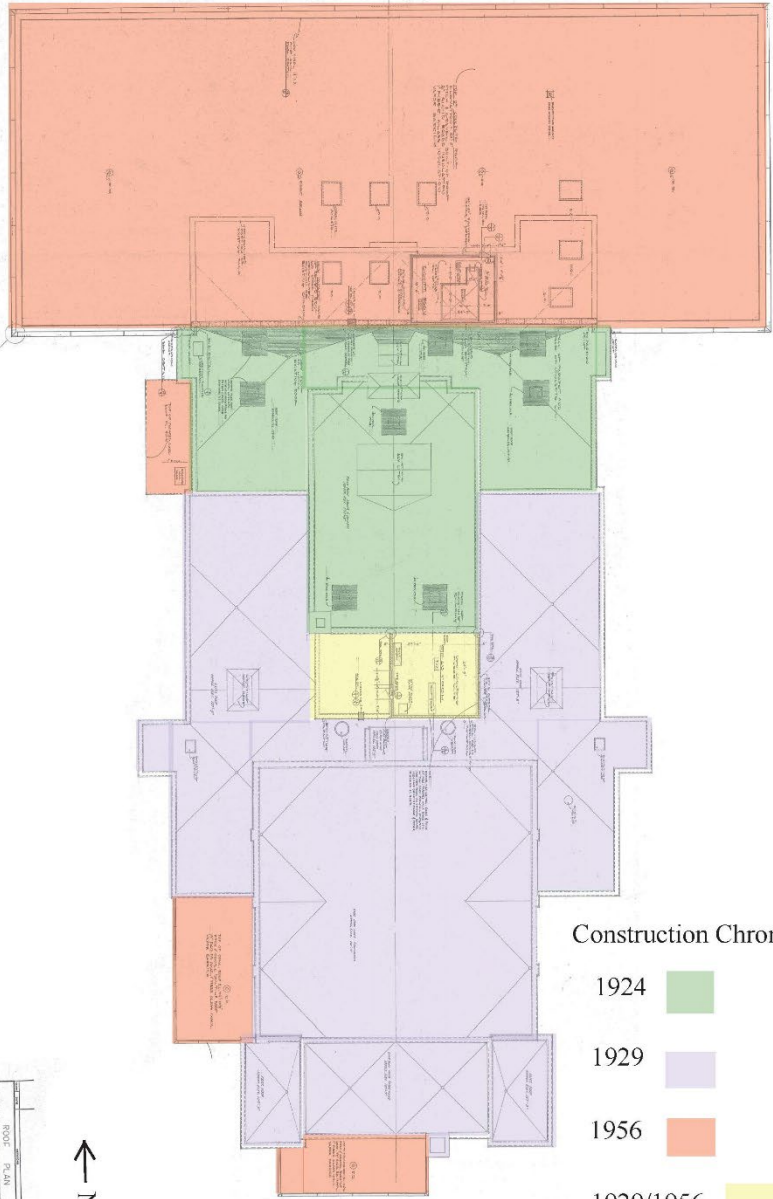


North Milwaukee High School

5372 N. 37th Street
Milwaukee
Milwaukee County,
Wisconsin



North Milwaukee High School is nominated under **NR Criterion C: Building Type (local level)** as an excellent example of a Progressive Era High School within the context of the former City of North Milwaukee.



Construction Chronology

1924



1929



1956



1929/1956



NO. 100	NO. 20	NO. 30	NO. 40	NO. 50	NO. 60	NO. 70	NO. 80	NO. 90	NO. 100
1	2	3	4	5	6	7	8	9	10
11	12	13	14	15	16	17	18	19	20
21	22	23	24	25	26	27	28	29	30
31	32	33	34	35	36	37	38	39	40
41	42	43	44	45	46	47	48	49	50
51	52	53	54	55	56	57	58	59	60
61	62	63	64	65	66	67	68	69	70
71	72	73	74	75	76	77	78	79	80
81	82	83	84	85	86	87	88	89	90
91	92	93	94	95	96	97	98	99	100





1924 building and 1929 addition, west elevation



1929 addition, south elevation



1956 addition, west and south elevations







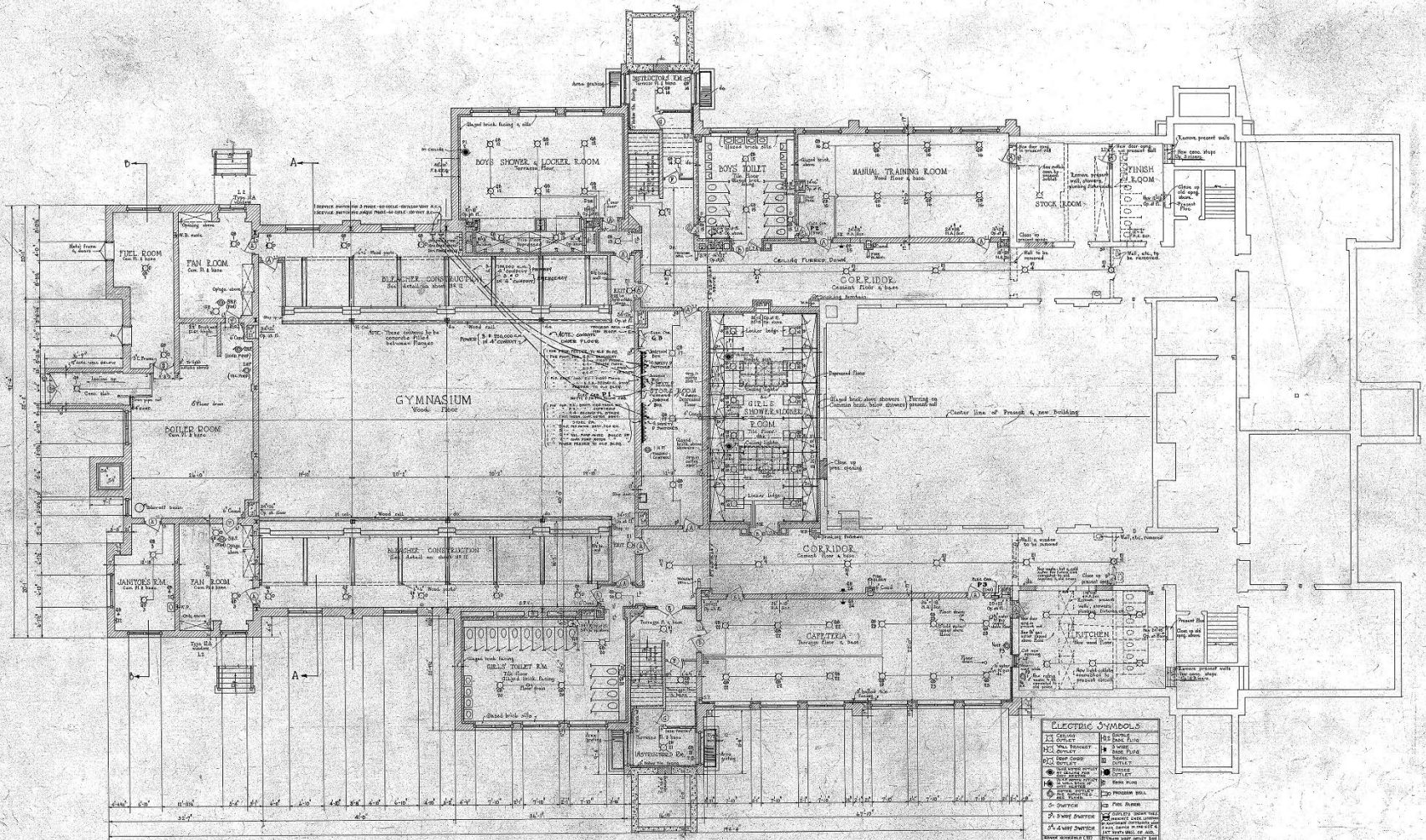




THOMAS A. EDISON
MIDDLE SCHOOL







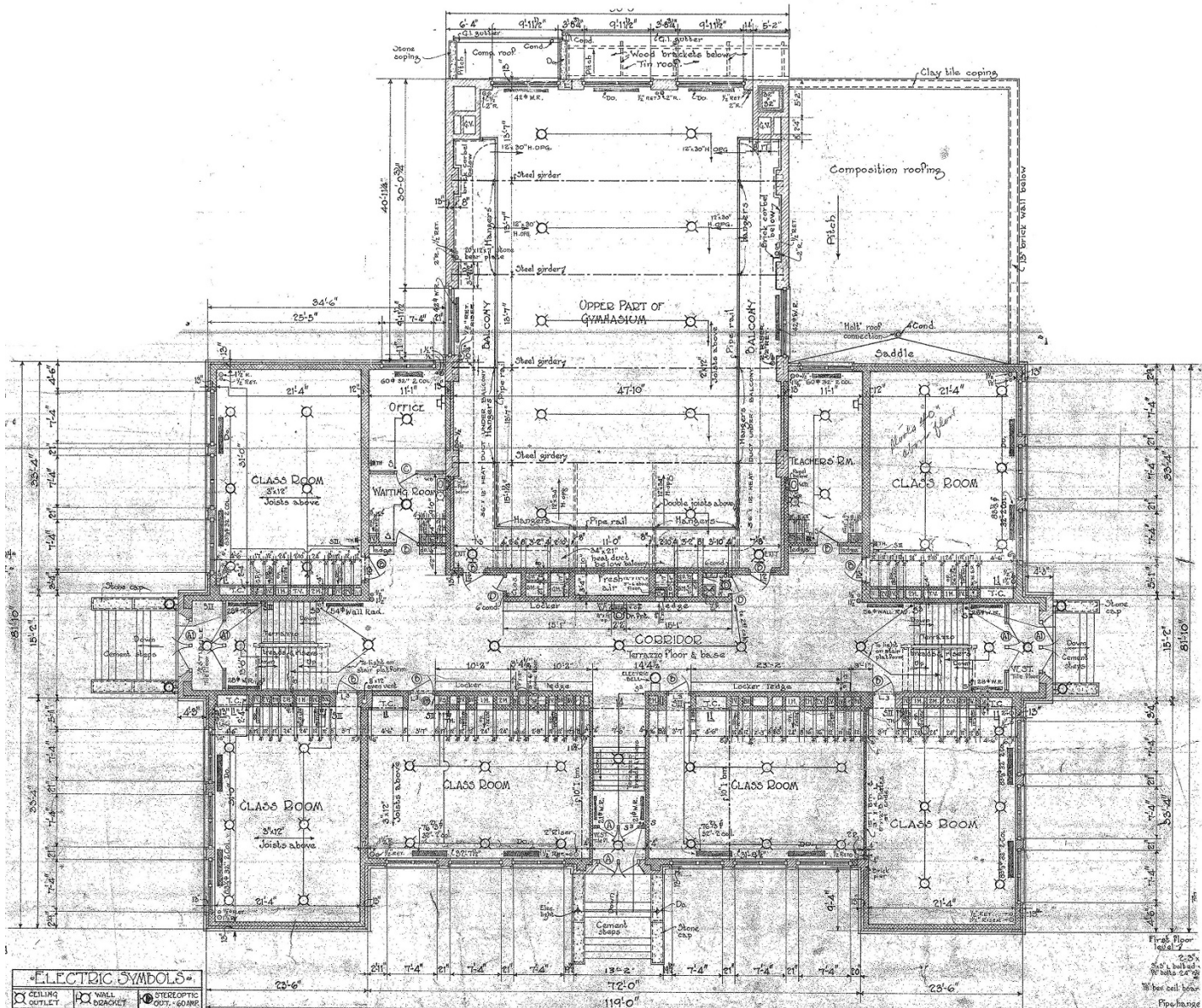
BASEMENT PLAN
Scale 1/4" = 1'-0"

ELECTRIC SYMBOLS

○ 1	○ 2	○ 3	○ 4	○ 5	○ 6	○ 7	○ 8	○ 9	○ 10	○ 11	○ 12	○ 13	○ 14	○ 15	○ 16	○ 17	○ 18	○ 19	○ 20	○ 21	○ 22	○ 23	○ 24	○ 25	○ 26	○ 27	○ 28	○ 29	○ 30	○ 31	○ 32	○ 33	○ 34	○ 35	○ 36	○ 37	○ 38	○ 39	○ 40	○ 41	○ 42	○ 43	○ 44	○ 45	○ 46	○ 47	○ 48	○ 49	○ 50	○ 51	○ 52	○ 53	○ 54	○ 55	○ 56	○ 57	○ 58	○ 59	○ 60	○ 61	○ 62	○ 63	○ 64	○ 65	○ 66	○ 67	○ 68	○ 69	○ 70	○ 71	○ 72	○ 73	○ 74	○ 75	○ 76	○ 77	○ 78	○ 79	○ 80	○ 81	○ 82	○ 83	○ 84	○ 85	○ 86	○ 87	○ 88	○ 89	○ 90	○ 91	○ 92	○ 93	○ 94	○ 95	○ 96	○ 97	○ 98	○ 99	○ 100
○ 101	○ 102	○ 103	○ 104	○ 105	○ 106	○ 107	○ 108	○ 109	○ 110	○ 111	○ 112	○ 113	○ 114	○ 115	○ 116	○ 117	○ 118	○ 119	○ 120	○ 121	○ 122	○ 123	○ 124	○ 125	○ 126	○ 127	○ 128	○ 129	○ 130	○ 131	○ 132	○ 133	○ 134	○ 135	○ 136	○ 137	○ 138	○ 139	○ 140	○ 141	○ 142	○ 143	○ 144	○ 145	○ 146	○ 147	○ 148	○ 149	○ 150	○ 151	○ 152	○ 153	○ 154	○ 155	○ 156	○ 157	○ 158	○ 159	○ 160	○ 161	○ 162	○ 163	○ 164	○ 165	○ 166	○ 167	○ 168	○ 169	○ 170	○ 171	○ 172	○ 173	○ 174	○ 175	○ 176	○ 177	○ 178	○ 179	○ 180	○ 181	○ 182	○ 183	○ 184	○ 185	○ 186	○ 187	○ 188	○ 189	○ 190	○ 191	○ 192	○ 193	○ 194	○ 195	○ 196	○ 197	○ 198	○ 199	○ 200

NOTE: Location of minor connections may be noted on job, corrected from Murray Construction.

REVISION	2	ADDITION TO	BASE
DATE	10/1/22	HIGH SCHOOL -	BASE
PROJECT	100	BOYS -	BASE
DESIGNED BY	W. K. S. D. S. L. S.	MURRAY CONSTRUCTION	BASE
CHECKED BY			BASE
APPROVED BY			BASE



ELECTRIC SYMBOLS

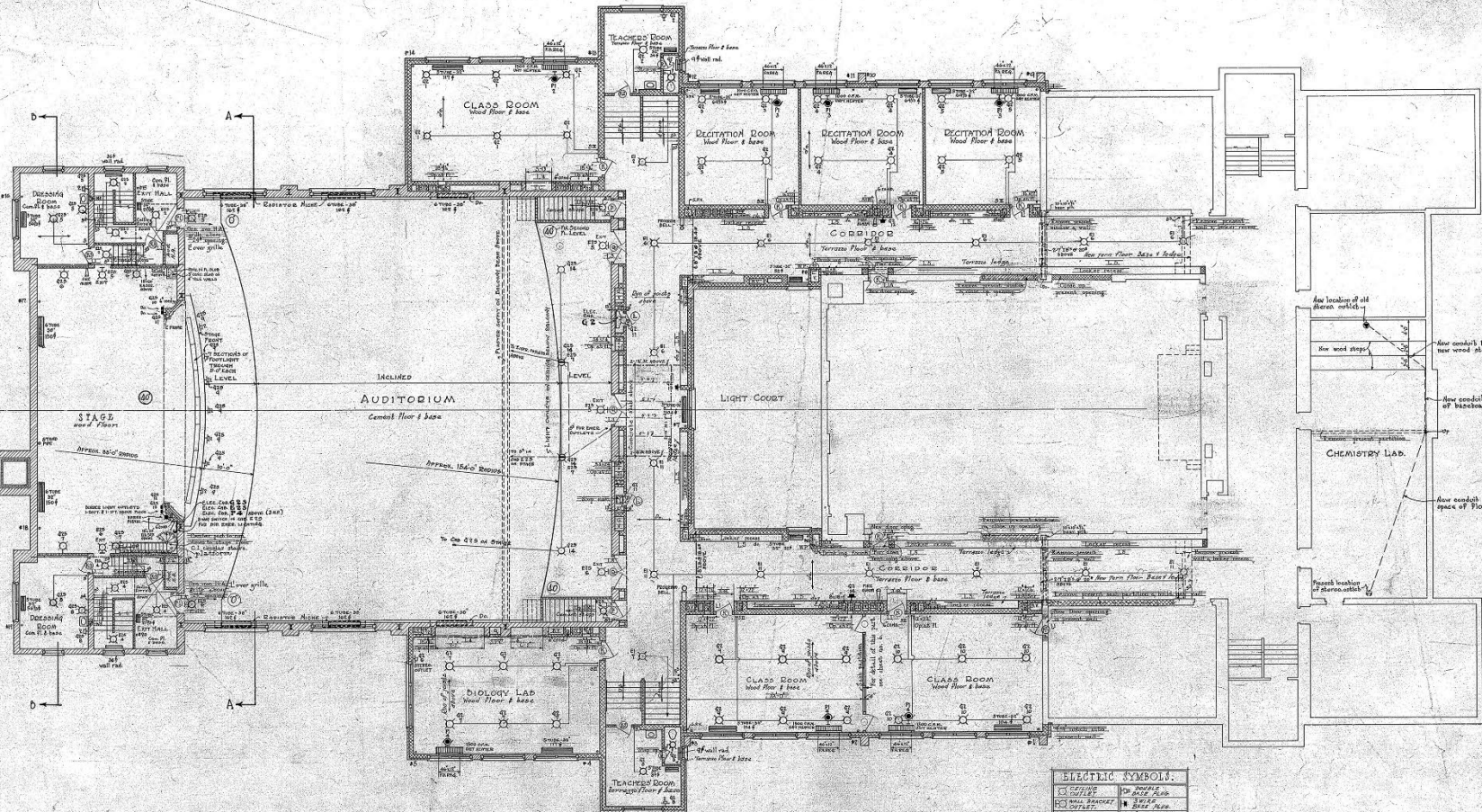
○ CEILING OUTLET	□ WALL BRACKET	⊙ STEREOPTIC OUT.-60 W.P.
⊙ COOP LIGHT	⊞ WALL PLUG	⊙ ELECTRIC BELL
⊕ ELECTRONIC OUTLET	S. SWITCH	⊕ 3-WAY SWITCH

GYMNASIUM TO HAVE 200 W. CAP. OUTLETS.
 CLASS ROOMS TEACHERS ROOM OFFICE & WAITING ROOM TO HAVE 150 W. CAP. OUTLETS.
 ALL OTHER WALL VESTIBULES CORRIDORS & OUTSIDE LIGHTS TO BE 100 W. CAP. OUTLETS.
 ENT. LIGHTS TO BE 75 W. CAP. OUTLETS.
 SERVICE CLAS. TO HAVE 50 W. CAP. OUTLET.
 WALL PLUGS TO HAVE 75 W. CAP. OUTLETS.

FIRST FLOOR PLAN
 Scale 1/8" = 1'-0"

SHEET NO. **3**
 ARCH. **W. C. GLEBEK**
 DRAWN BY: **W. C. GLEBEK**
 TRACED BY: **W. C. GLEBEK**
 CHECKED BY: **W. C. GLEBEK**
 DESIGNED BY: **W. C. GLEBEK**

HIGH SCHOOL BUILDING
 TO BE BUILT IN THE CITY OF
NORTH MILWAUKEE, WIS.
 VAN DYKE & O'CONNOR, ARCHITECTS, DATE MARCH 1924
 122 CARWEN BLOCK MILWAUKEE, WIS.

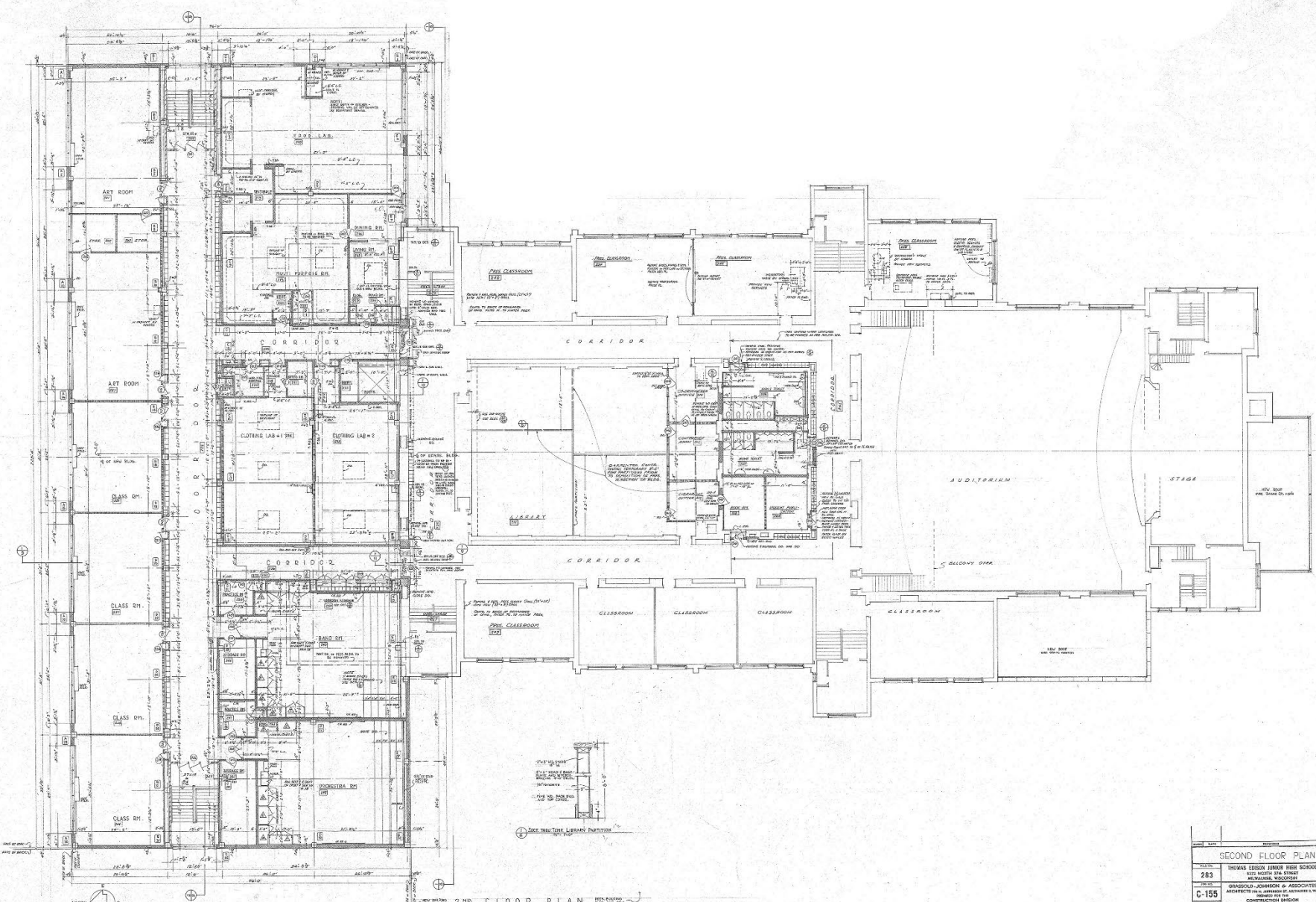


SECOND FLOOR PLAN
 Scale 1/8" = 1'-0"

ELECTRIC SYMBOLS:	
	NEW SYMBOL
	NEW SYMBOL
	NEW SYMBOL
	NEW SYMBOL
	NEW SYMBOL
	NEW SYMBOL
	NEW SYMBOL
	NEW SYMBOL
	NEW SYMBOL
	NEW SYMBOL
	NEW SYMBOL
	NEW SYMBOL
	NEW SYMBOL

NOTE: Location of Minor Outlets, For New Services to be furnished from existing conductors.

SHEET No.	4	ADDITION TO:	HIGH SCHOOL BUILDING
DESIGNED BY	BAILEY & McCLELLAN	ARCHITECTS	MILWAUKEE, WISCONSIN
CONTRACT NO.		CLIENT	MILWAUKEE PUBLIC SCHOOLS
DATE	1915-16		



2ND FLOOR PLAN
SCALE 1/8" = 1'-0"

SECOND FLOOR PLAN	
283	THOMAS EDISON JUNIOR HIGH SCHOOL 5125 NORTH 29th STREET MILWAUKEE, WISCONSIN
C-155	BRASOLD, JOHNSON & ASSOCIATES ARCHITECTS 1000 NORTH MILWAUKEE AVENUE MILWAUKEE, WISCONSIN
6	SCALE OF BOARD SPECIFICATIONS MAY 1958
6	DATE OF REVISION MAY 1958













222
AUDITORIUM

THE UNIVERSITY OF CALIFORNIA
SCHOOL OF EDUCATION











THOMAS A. EDISON

1859
1860
1861
1862
1863
1864
1865
1866
1867
1868
1869
1870
1871
1872
1873
1874
1875
1876
1877
1878
1879
1880
1881
1882
1883
1884
1885
1886
1887
1888
1889
1890
1891

Journal of a woman
from a woman.





**North Milwaukee High School
5732 North 37th Street Milwaukee, WI
National Register Nomination**