

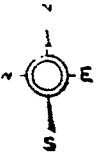
S.W. 32-7-22
ATLAS # 432

432

432-35

WALKER'S POINT ADDITION

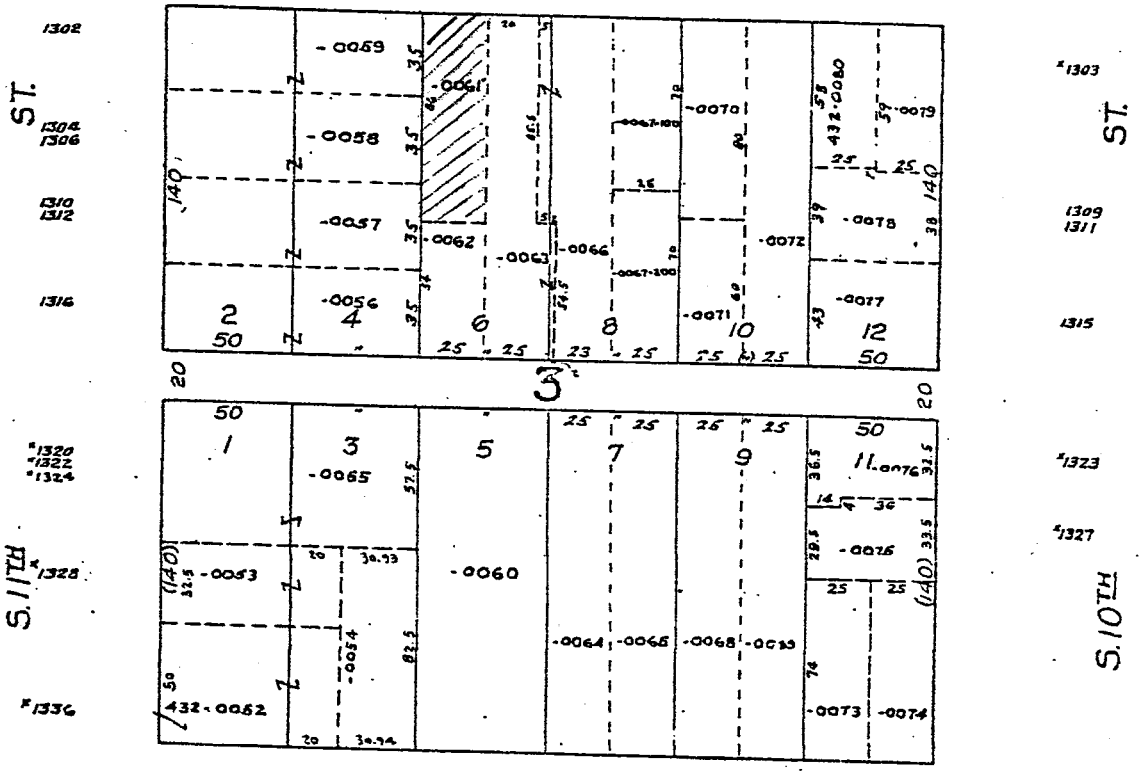
SCALE 50 FT. = 1 INCH



W. MADISON

ST.

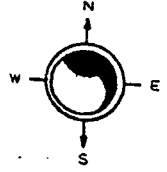
1027 1021 1019 1015 1011 1009 1007 1001
1025 1017 1013 1011A 1005
1025A-REM 1013A-REM



1028 1020 1024
W. GREENFIELD AVE

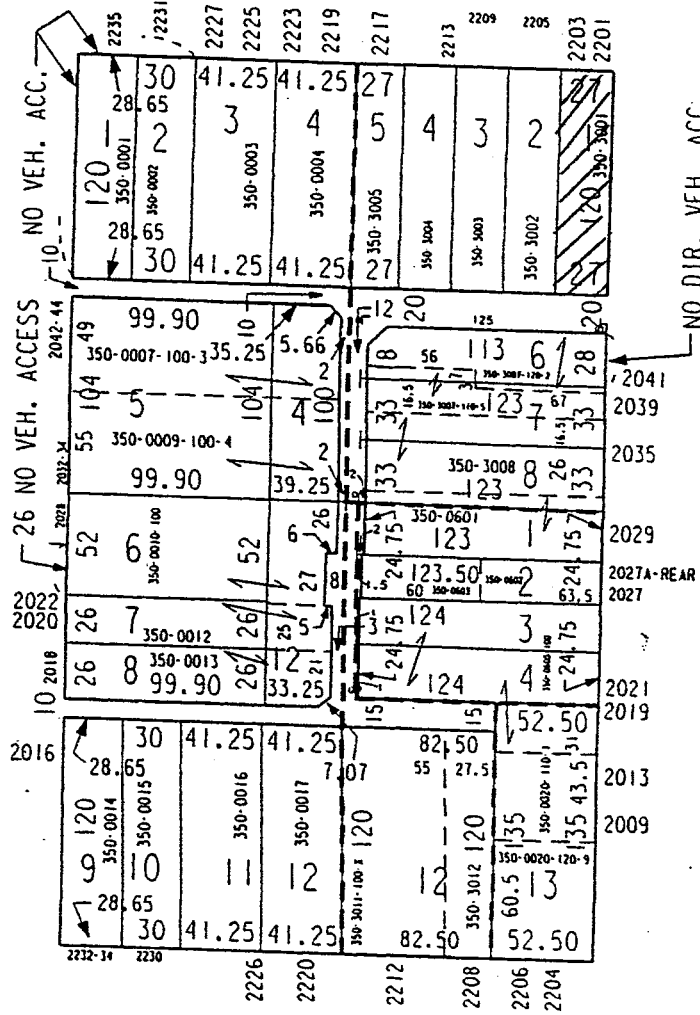
ENCLOSURE 6-10-76

101
103



ASSESSMENT SUBDIVISION NO. 9

N 23RD ST



N 22ND ST
 W BIRNSCHEIN'S SUBDIVISION
 N 23RD ST
 VIEBERINK'S SUBDIVISION
 ASSESSMENT SUBDIVISION NO. 9

W BROWN ST
 VIEBERINK'S SUBDIVISION

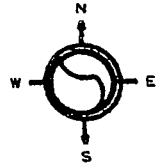
SW 08-7-22

ATLAS P. 283

283

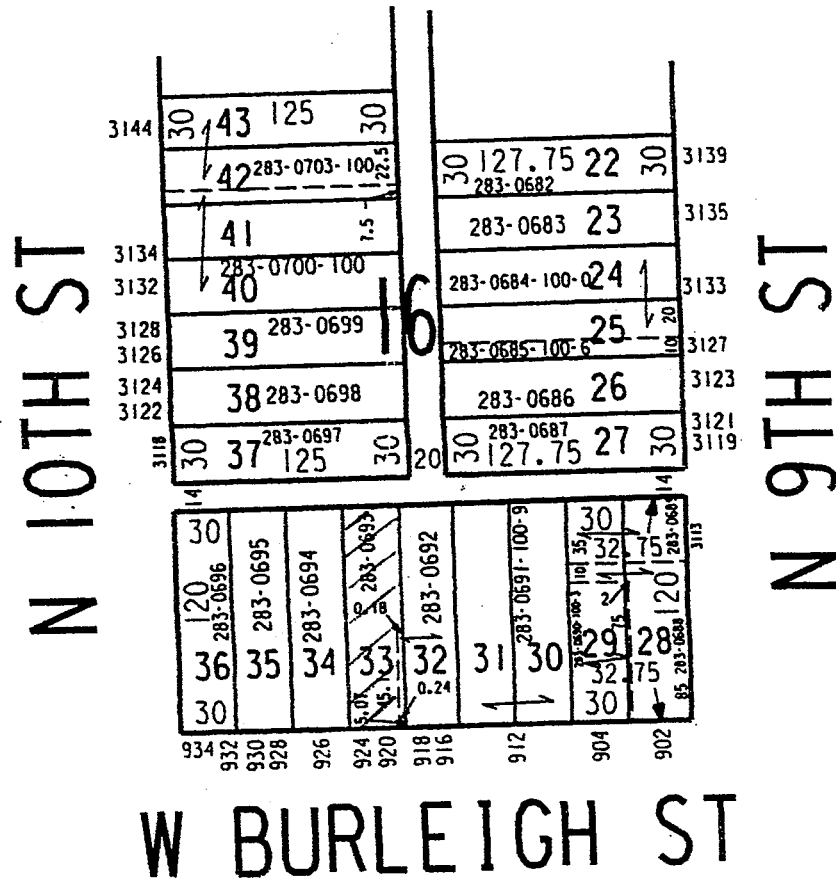
283-23

SCALE 1" = 80'



MILWAUKEE SAVINGS & INVESTMENT ASSOCIATION SUBD. NO. 2

PAGE 283-22 ADJ.



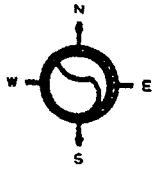
SW 07-7-22

ATLAS P. 285

285

285-34

SCALE 1"=80'

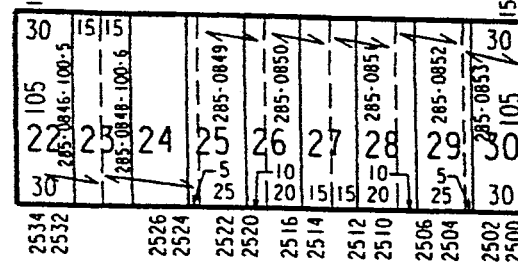
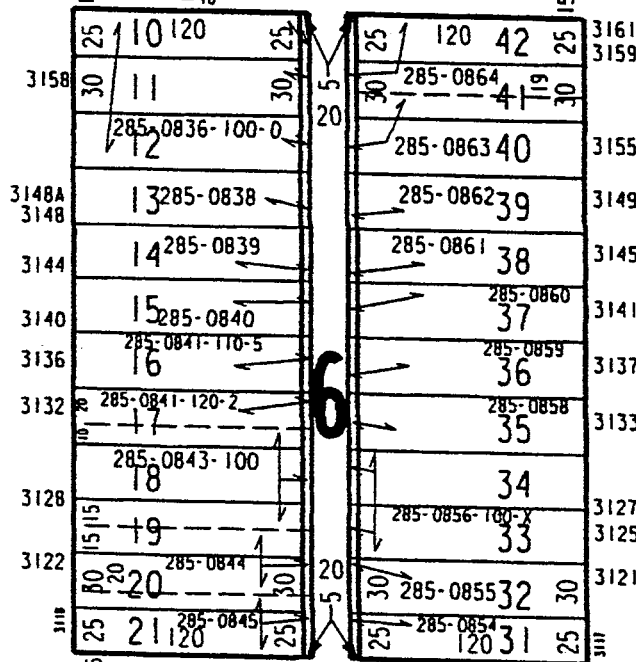
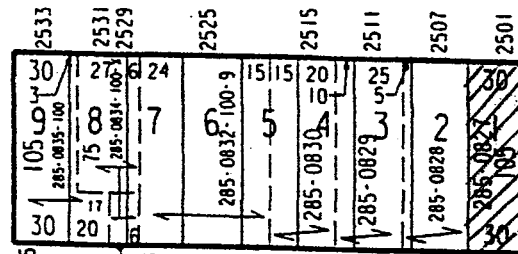


GRAND VIEW

W AUER AV

N 26TH ST

N 25TH ST



W BURLEIGH ST

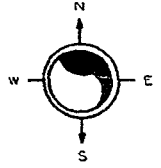
SW 32-8-21

ATLAS P. 216

216

216-17

SCALE 1" = 80'



C.S. MAP NO. 41
REC. 1-14-60

C.S. MAP

NO. 44
REC. 1-14-60

C.S. MAP
NO. 42
REC. 1-14-60

W LANCASTER AV

C.S. MAP
NO. 1553
REC. 5-27-71

JOSEPH R. GOODMAN SUBDIVISION
RECORDED 10-11-60

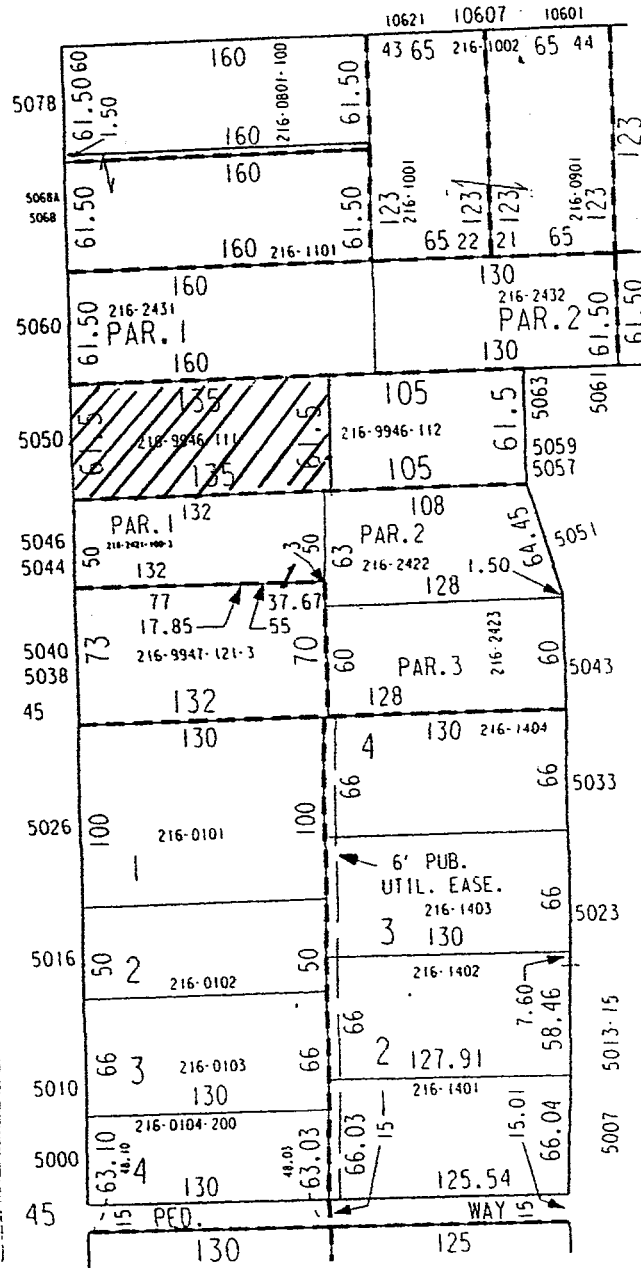
C.S. MAP
NO. 43
REC. 1-14-60

N 107TH ST

1/4 SECTION LINE

680' S

1049' S



PAGE 216-12 ADJ.

N 106TH ST

C.S. MAP
NO. 1636
REC. 9-6-71

CERTIFIED SURVEY MAP NO. 1098

RECORDED 9-5-69

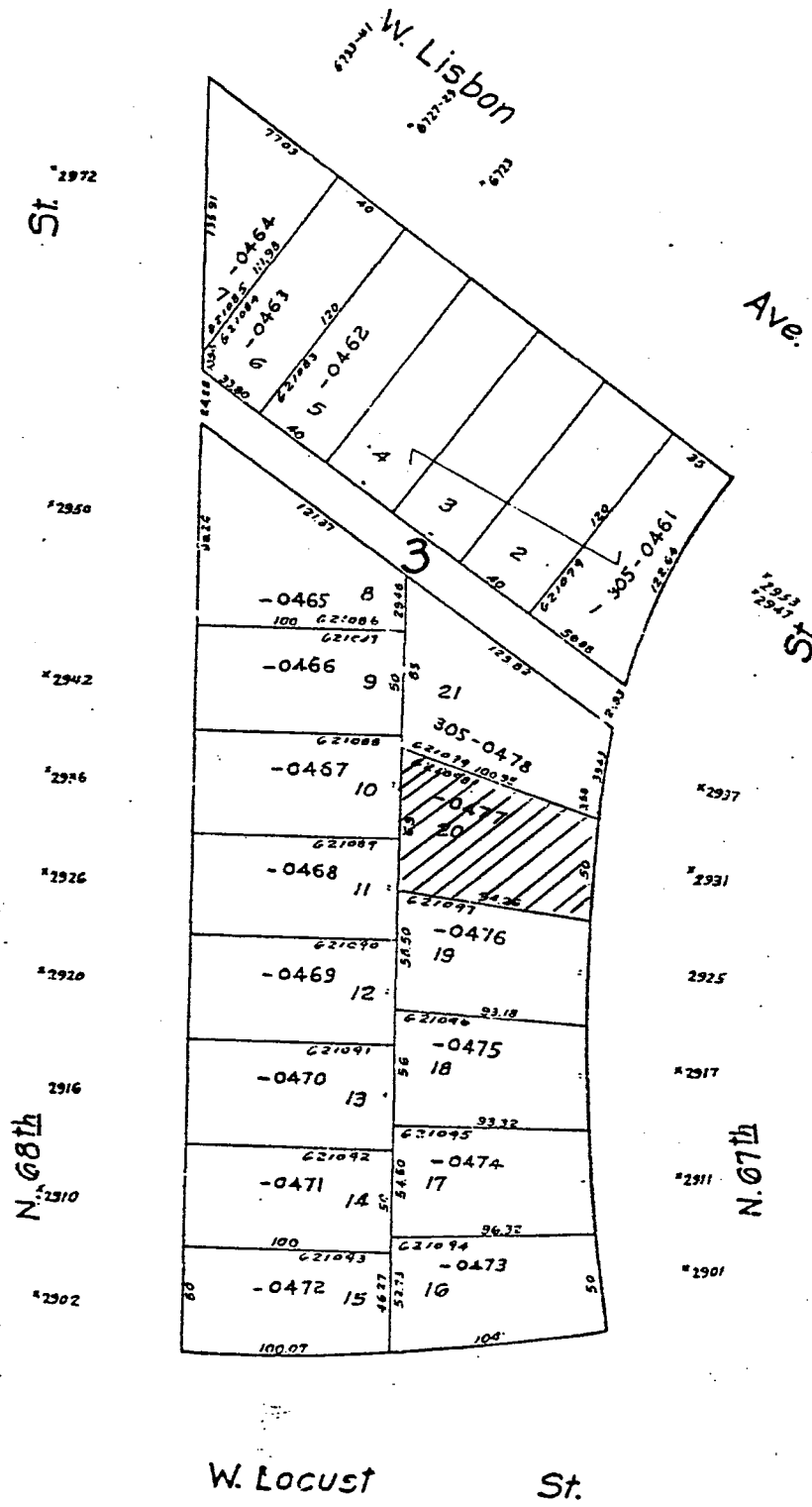
PAGE 216-16 ADJ.

05-27-93
ASSESSOR'S OFFICE

N.E. 15-7-21
ATLAS A.306

305
Vol. 38 Page 60
Gale Crest Park

305-36



MICROFILMED

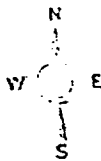
SE 10-6-21
ATLAS P. 514

514

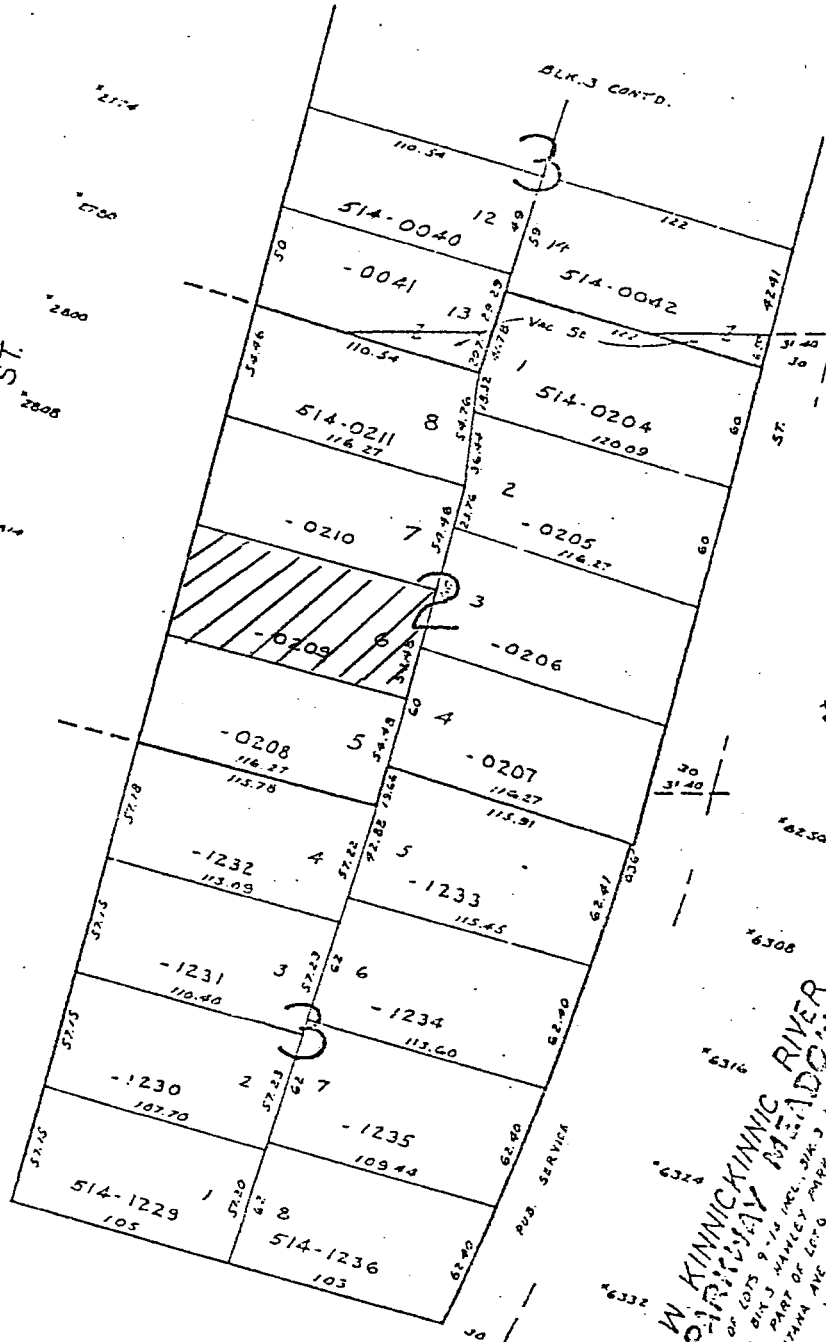
CONSOLIDATED HIGHLANDS

VOL. 62, PAGES 114-12

514-17



SID DWYER'S SUBD. NO. 1
BEING A RESUBD OF PART OF LOTS 4, 5, 6 & 21X,
LOTS 1, 2, 3, 4, 5 & 6 BLK 3 HANLEY PARK, PART
OF LOTS 13 & 14, BLK 3, CONSOLIDATED HIGHLANDS,
PART OF MC. W. MONTANA ST.,
VOL. 79, PAGE 19



W. STACK
DRIVE

DRIVE

**W. KINNICKINNIC RIVER
PARKWAY MEADOWS**
BEING A RESUBD OF LOTS 9-14, MC. W. ST. 1/2 BLK 3
HANLEY PARK, PART OF LOT 1, BIX 2, CHANNY
PARKWAY ADDN NO. 3 PART OF LOT 6, BIX 3,
PART OF MC. W. MONTANA AVE, MC. S. 63 TO ST
VOL. 79, P. 35 & 36

PKWY.

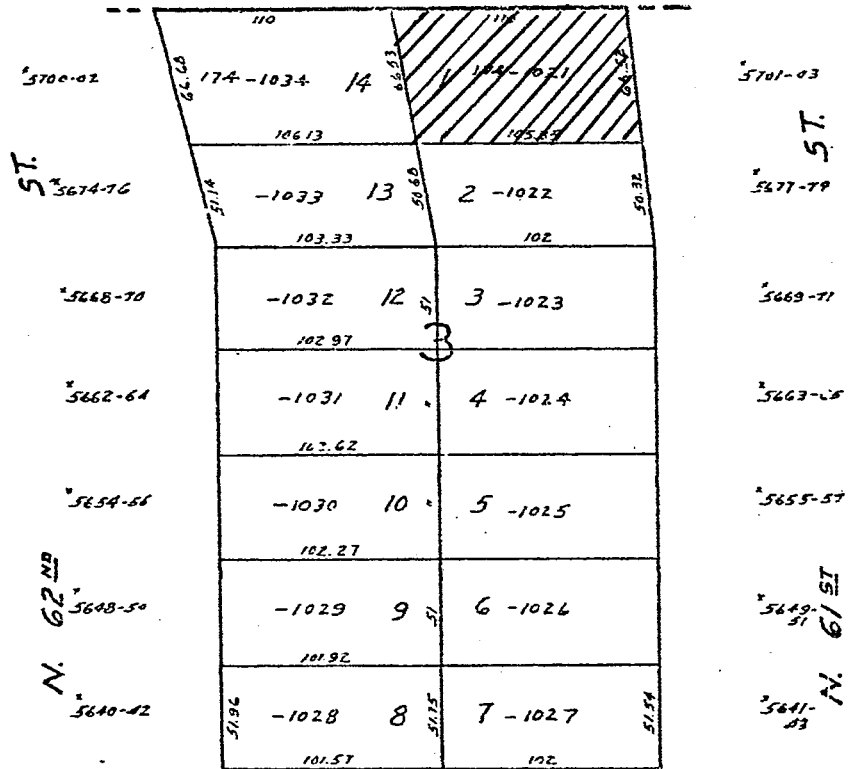
SE 27-8-21
ATLAS P. 174

174

174-06



H. J. BRODY'S ADD'N. NO 1 ADJ



W. THURSTON AVE.

WELBILT MANOR ADDITION NO. 1

VOL. 62 PAGES 41242

MICROFILMED

N.E. 14-7-21
ATLAS A 307

307

307-05

Vernon Heights Cont.

W. Hadley St



2774	117.30 307-1235 2	17	117.00 307-1234 1	2775
2770-2	117.30 307-0948 28		117.30 307-0921 1	2771-3
2766-8	-0947 27		-0922 2	2767-9
2760	-0946 26		3 -0923	2761-3
2758	-0945 25		4 -0924	2757
2750	-0944 24		5 -0925	2749-81
2746	-0943 23		6 -0926	2745-7
2738	-0942 22	2	7 -0927	2739-41
2734-6	-0941 21		8 -0928	2735-7
2728-30	-0940 20		9 -0929	2729
2722-4	-0939 19		10 -0930	2723-5
2716-8	-0938 18		11 -0931	2717-9
2712-4	-0937 17		12 -0932	2713-5
2706-8	-0936 16		13 -0933	2707-9
2700-2	307-0935 15		14 307-0934	

MICROFILMED 7-23-74

W. Center St

Vol. 35 Page 15
Vernon Heights

S. E. 11-7-21
ATLAS P. 288

288

288-04

RAINBOW RIDGE NO. 2
Vol. 37 Page 6

W. AUER

AVE.



3174-6	112.00 F13342 288-0744	18	130.00 F13321 288-0720	3175-7
3170-2	F13345 -0745	26	F13322 -0721	3169-71
3164-6	F13344 -0744	25	F13323 -0722	3163-5
3162	F13343 -0743	24	F13324 -0723	3157-9
3154-6	F13342 -0742	23	F13325 -0724	3145-51
3150-2	F13341 -0741	22	F13326 -0725	3141-3
3144-6	F13340 -0739	20	F13327 -0726	3135-7
3138	F13338 -0737	18	F13328 -0727	3129-31
3134	F13337 -0736	17	F13329 -0728	3123-5
3130	F13336 -0735	16	F13330 -0729	3115-7
3122-4	F13335 -0734	15	F13331 -0730	3109-41
3116-8	F13334 -0733	14	F13322 288-0731	
3112-4	F13333 288-0732	13	130.00	
3108	112.00	12		

MICROFILMED

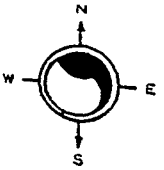
N. FORTY-FOURTH

W. BURLEIGH

ST.

PRUSSIAN HEIGHTS

W WRIGHT ST



N 35TH ST

N 34TH ST

	30	33	40	120 ⁴⁰	14	30	120	1	33	2479
2478	30	39	326-1556	80	326-1555	30	326-1516	2	30	2477
2474							326-1517			2473
2468			38		326-1554		326-1518		3	2471
2466										2469
2464			37		326-1553		326-1519		4	2467
2460			36		326-1552				5	
2458			35		326-1551-100-4				6	
			34				326-1522-100-6		7	2455
2450			33		326-1549		326-1523		8	2453
2448										2451
2446			32		326-1548		326-1524		9	2449
2444										2447
2440			31		326-1547		326-1525		10	2445
2438			30		326-1546		326-1526		11	2443
2432			29		326-1545		326-1527		12	2441
2430			28		326-1544-100-6		326-1528		13	2437
2428			27				326-1529		14	2433
2420			26		326-1542		326-1530		15	2429
2416			25		326-1541		326-1531		16	2425-27
2412			24		326-1540		326-1532		17	
2408			23		326-1539		326-1533		18	2411
2406			22		326-1538		326-1534		19	2409
	30	21	326-1537	15	326-1534	30	326-1535	20	30	

W MEINECKE AV

N.E. 1-7-21
ATLAS P. 230

W. HAMPTON

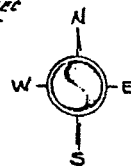
230

AVE.

230-17

N. L. of 1/4 SEC

N. L. of 1/4 SEC



ST.

ST.

N. THIRTY-FIRST

N. THIRTIETH

UNRECORDED 17-28-72

33	30.26	120	44	15	128.53	24	33
4788							
4784		-0312	43		2		
4780		-0311	42		3	-0274	
4774		-0310	41		4	-0275	
4770		-0309	40		5	-0276	
4766		-0308	39		6	-0277	
4762		-0307	38		7		
4758		-0306	37		8	-0278	
4754		-0305	36		9	-0279	
4750		-0304	35		10	-0280	
4746		-0303	34	19	11	-0281	
4742		-0302	33		12		
4738		-0301	32		13	-0282	
4734		-0300	31		14	-0283	
4730		-0299	30		15	-0284	
4726		-0298	29		16	-0285	
4722		-0297	28		17	-0286	
4718		-0296	27		18	-0287	
4714		-0295	26		19	-0288	
4710		-0294	25		20	-0289	
4706		-0293	24		21	-0290	
4702		-0292	23	15	22	-0291	
		120			128.02		

4785
4783

4777

4775

4771
4769

4767

4761

4755

4749

4747-47A

4743

4737

4731

4725

4723

4719

4715

4711

4707

4701

W. COURTLAND

AVE.

N. MILWAUKEE TOWNSHIP CO. S. ADD. NO. 2
Vol. 21 Page 24

309

309-71

N.E. 13-7-21
ATLAS P. 309

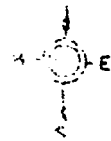
Fond du lac Ave. Addr.

CAWKER'S SUBD. A

W. Chambers St.

2933
2931

2921



St. 2968

2962
2960

2956

2952

2948A - REAR
2948

2944

2942

2936

2934
2932

2930
2928

2920

St. 2916

2914

2910

N. 30th

309-0647	1	2	309-0199	1	2979 2977
-0648	2	2	-0200	2	2975 2973
76	45				
-0649-100	3	3	-0201	3	2971 2969
	4	4	-0202	4	2967
-0651	5	5	-0203	5	2963
-0652	6	6	-0204	6	2959 2957
-0653	7	7	-0205	7	2955
-0654	8	8	-0206	8	2951
77.50	43.50				
-0656	9	9	-0207	9	2945
-0657	10	10	-0208	10	2943 2941
5	11	11	-0209	11	2939
-0658					
-0659	12	12	-0210	12	2935 2933
-0660	13	13	-0211	13	2931
	14	14	-0212	14	2927
-0662-100	15	15	-0213	15	2923 2921
-0663	16	16	-0214	16	2919 2917
-0664	17	17	-0215	17	2915 2913
-0665	18	18	-0216	18	2911 2909
309-0666	19	19	-0217	19	2907
-0667-100-6	20	20	309-0218	20	2903 2901
41	(121) 80	10	120		

LOT 21 ALLEY
309-0663

St.

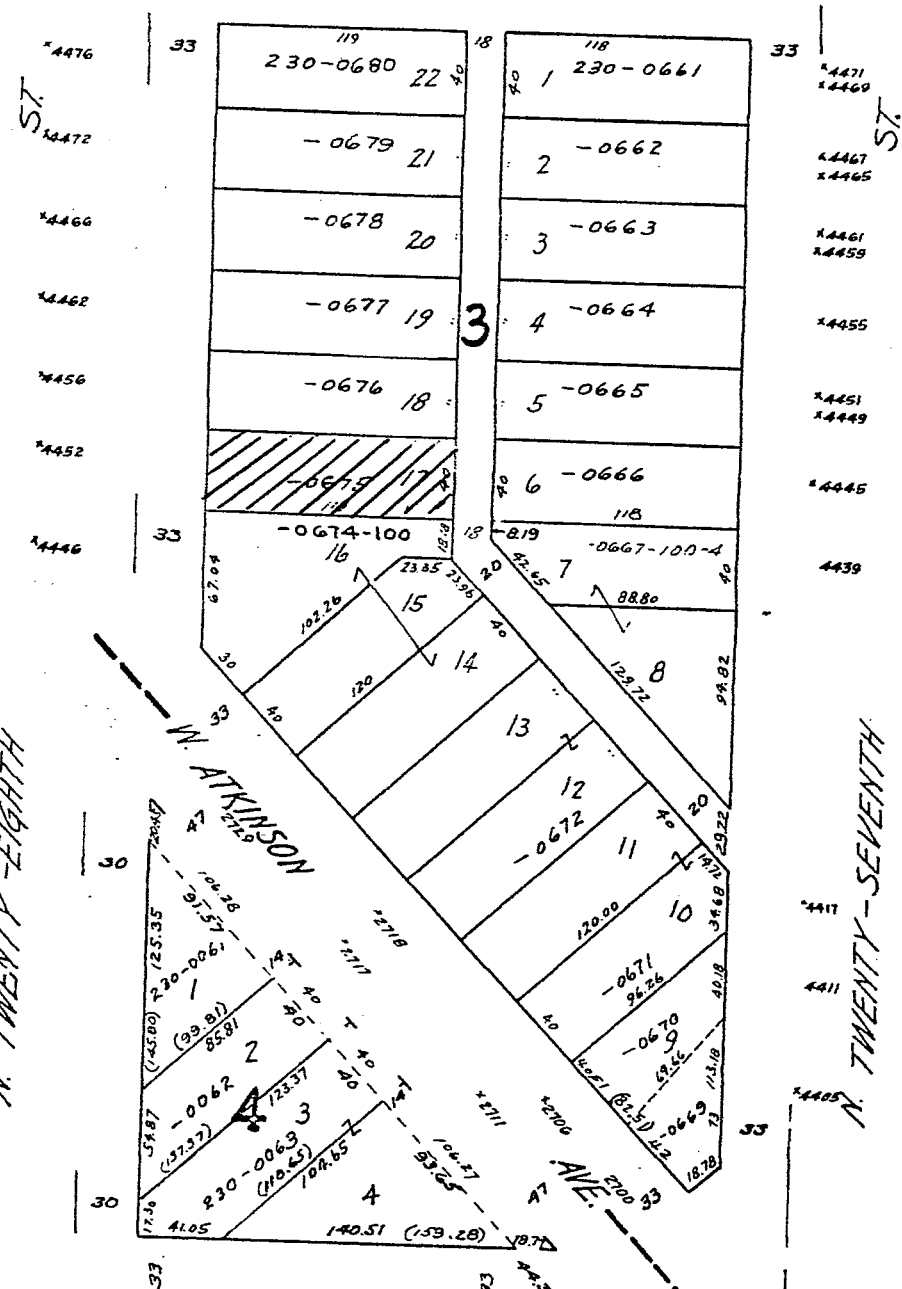
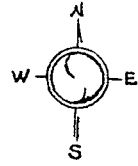
N. 29th

N.E. 1-7-21
ATLAS P. 230

230
NORVILLE

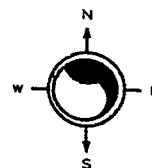
230-04

W. RUBY AVE.



MICROFILMED 3-29-65

1/4 SEC W. CONGRESS
CONT. OF ZINGEN & BRAUN'S NORVILLE

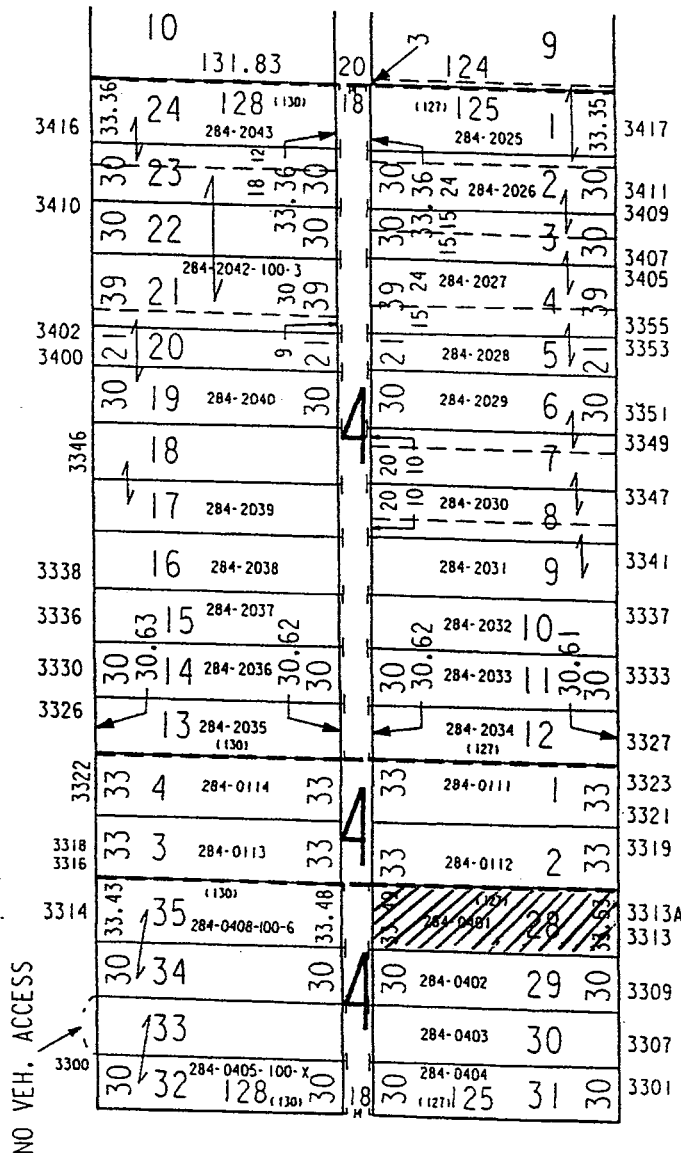


AUGUST PAGENKOPF'S SUBDIVISION

PAGE 284-20

N 17TH ST

N 16TH ST



ASSESSOR'S TEUTONIA HEIGHTS PLAT NO. 103

RECORDED 5-23-1887

W CONCORDIA AV
CONT. OF TEUTONIA HEIGHTS

NW 08-7-22

ATLAS P. 272

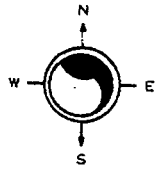
272 & 283

272-37

SW 08-7-22

ATLAS P. 283

SCALE 1" = 80'

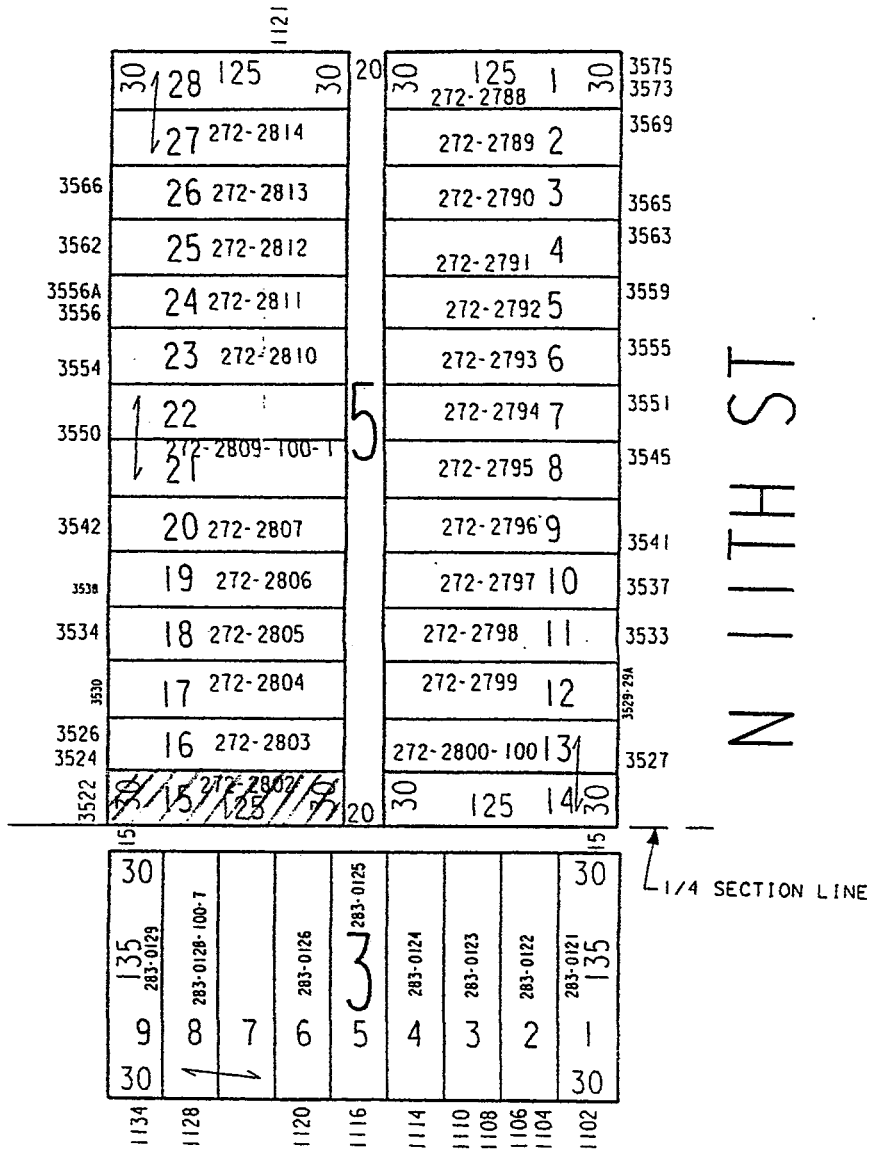


WILLIAMSBURG HEIGHTS

W FINN PL

N 12TH ST

N 11TH ST



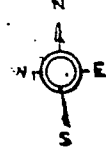
W KEEFE AV
 MILWAUKEE SAVINGS AND
 INVESTMENT ASSOCIATION
 SUBDIVISION NO 2

S.W. 32-7-22
ATLAS R. 432

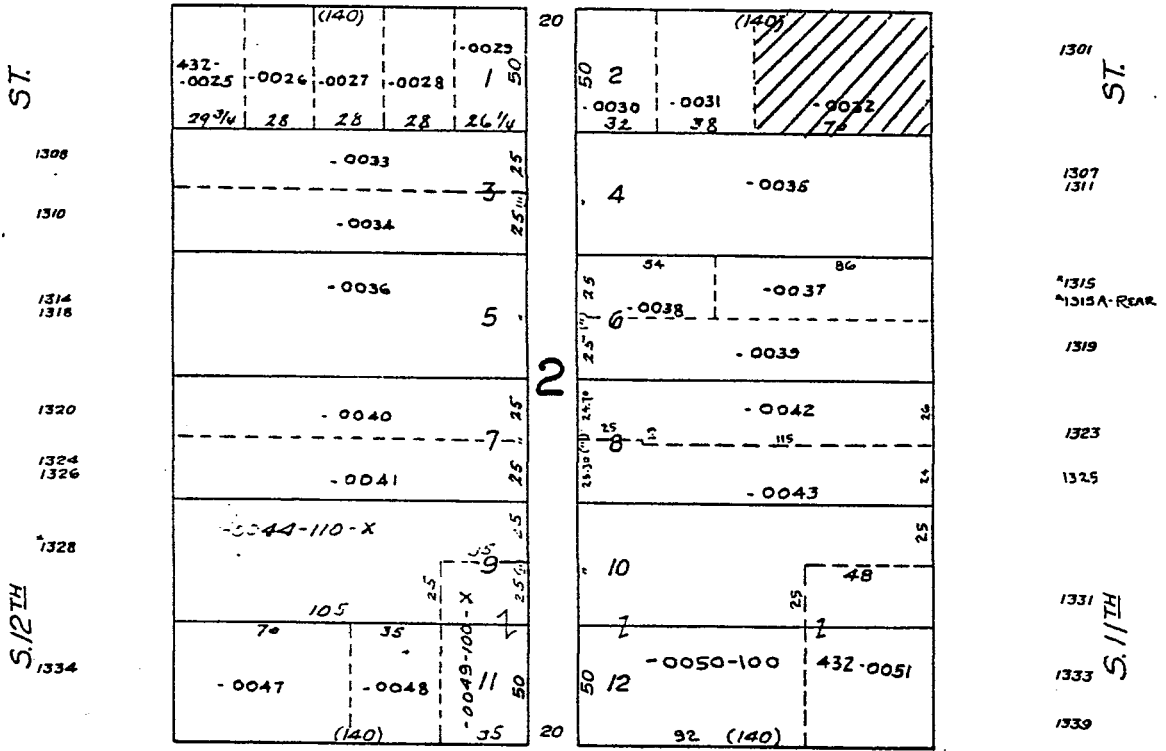
432
WALKER'S POINT ADDITION

432-36

SCALE 50 FT. = 1 INCH



W. MADISON ST.
1137 1135 1131 1127 1123 1117 1113



4-3-85

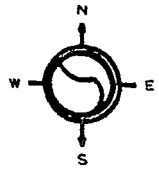
SE 08-7-22

ATLAS P. 282

282

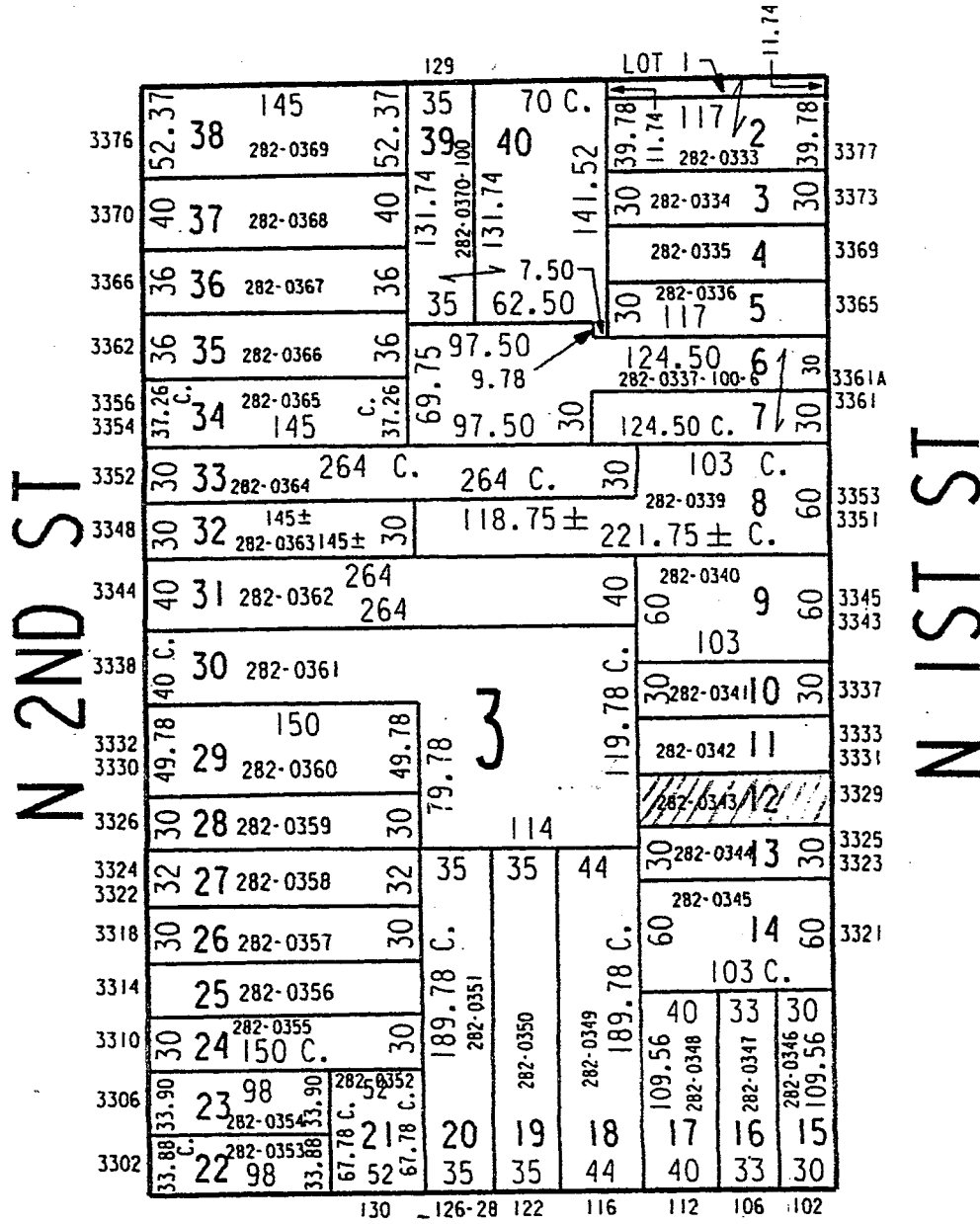
282-18

SCALE 1" = 80'



ASSESSOR'S PLAT NO. 113

W TOWNSEND ST



W CONCORDIA AV

08-24-98

ASSESSOR'S OFFICE