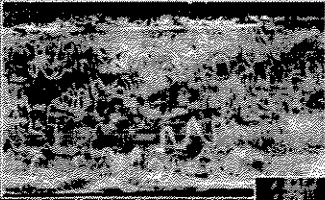
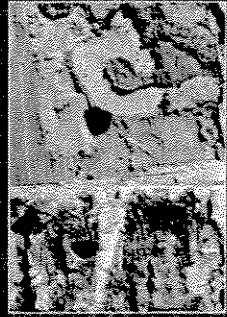
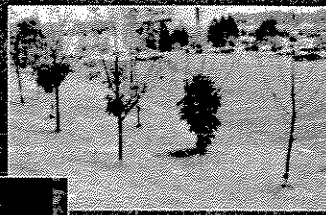


Symptoms of Infestation

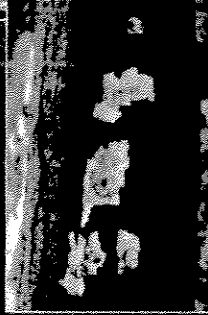
S-shaped galleries



Sprouts



D-shaped emergence holes



Woodpecker activity

Crown Dieback



Photos: Dave Cappaert

If you see this beetle in Michigan call your local MSU Extension office or the MDA hotline: 1-866-325-0023.

For more information, visit <www.emeraldashborer.info>.

How do I know if I have Emerald Ash Borer?

In July 2002, a new exotic insect species was discovered in south-east Michigan. The emerald ash borer (EAB) is a wood-boring beetle from Asia that feeds on ash trees. Larvae tunnel beneath the bark and feed in the cambium between the bark and wood. The tunnels eventually girdle and kill the tree.

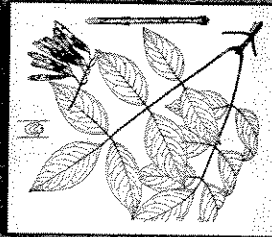
More than 700 million ash trees are at risk in Michigan alone. Help stop the spread of EAB!

Identification

Make sure you have an ash tree

Ash trees have opposite branches and compound leaves. They are used as ornamental/shade trees and are common in woodlots and forests.

EAB attacks all ash species including white, green and black ash. Mountain ash is not affected.



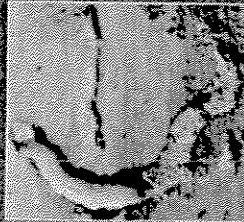
Emerald Ash Borer



Adult

Adults are metallic green, 8.5 to 13.5 mm long and slender.

Larvae are slender, flattened and cream colored with a brown head.



Larva