

*City of Milwaukee Health Department*

# **Home Environmental Health Division Status Update**

Public Safety & Health Committee

April 25, 2019



**Follow up with Lead Poisoned Children**  
**– *File #181719* –**



# Reporting



Child tested by primary  
care provider



Primary care provider  
shares test results with  
family

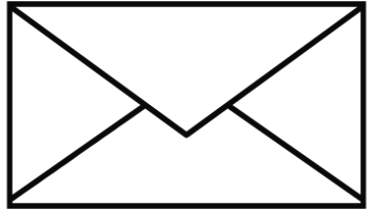


Primary care provider  
faxes result to health  
department



Health department enters  
result into database

# Current Interventions



*All children under 6 with EBLLs*

**5 to 19.9 ug/dL**

1. Letter with test result and education materials mailed to family. Letter includes follow up testing recommendations.
2. Eligible for free water filter.
3. Eligible for free lead-safe home kit.



*Children under 6 with preliminary EBLLs*

**20 to 39.9 ug/dL**

1. Letter with test result and education materials mailed to family.
2. Nurse calls family to encourage follow up testing.
3. Eligible for free water filter.
4. Eligible for free lead-safe home kit.



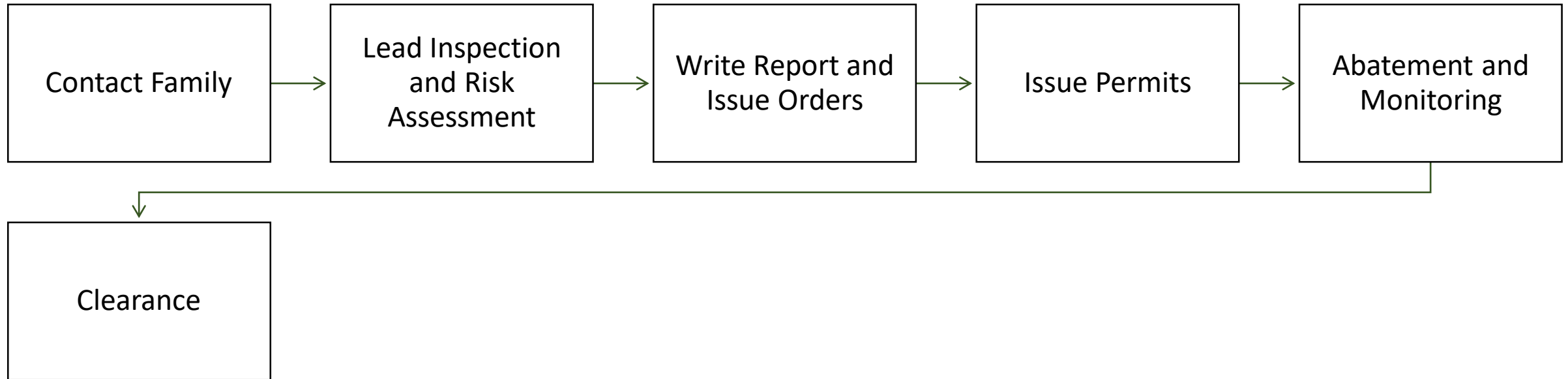
*Children under 6 with confirmed EBLLs*

**20 to 39.9 ug/dL\***

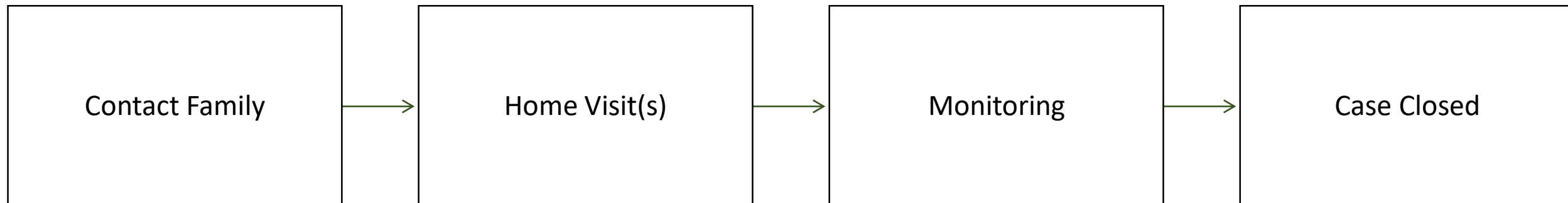
1. Letter with test result and education materials mailed to family.
2. Environmental investigation initiated.
3. Nursing case management services initiated.
4. Eligible for free water filter.
5. Eligible for free lead-safe home kit.

\*Or two confirmed BLL  $\geq 15$  ug/dL at least 90 days apart.

## Environmental Investigations



## Nursing Case Management



# EBLLs by the Numbers

<b>Highest Confirmed or Reported Test</b>			
	<b>2016</b> (24,266)	<b>2017</b> (24,678)	<b>2018*</b> (25,432)
<b>Less than 5 ug/dL</b>	21,820	22,154	23,128
<b>5-9 ug/dL</b>	1,785	1,845	1,740
<b>10-14.9 ug/dL</b>	417	383	325
<b>15-19.9 ug/dL</b>	132	147	114
<b>20+ ug/dL</b>	112	149	125

\*Preliminary, subject to change as additional tests reported to Health Department

# Long-Term Goal

Offer more intensive services to children at lower elevated blood lead levels.

Dependent on: Addressing backlog, enhanced workflow's impact on caseload, and continued funding.

# Lead Investigation & Risk Assessment

– *An Overview*–



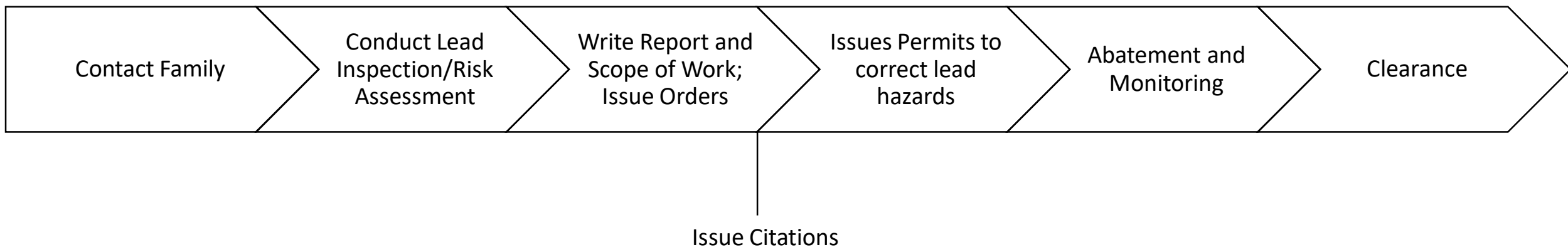


# Meet a Certified Lead Risk Assessor

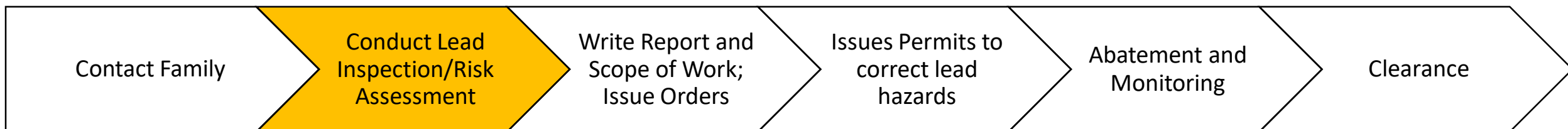


- Provide education on lead hazards to families
- Identify potential lead hazards in the home
- Coordinate the completion of lead abatement activities

# LEAD INVESTIGATION PROCESS



# LEAD INVESTIGATION PROCESS



# ELEMENTS OF A LEAD INVESTIGATION AND RISK ASSESSMENT



Questionnaire



Visual Inspection



Dust Samples



Soil Samples



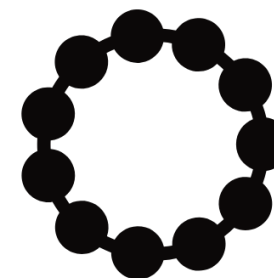
XRF Readings



Water Filter



Interim Controls



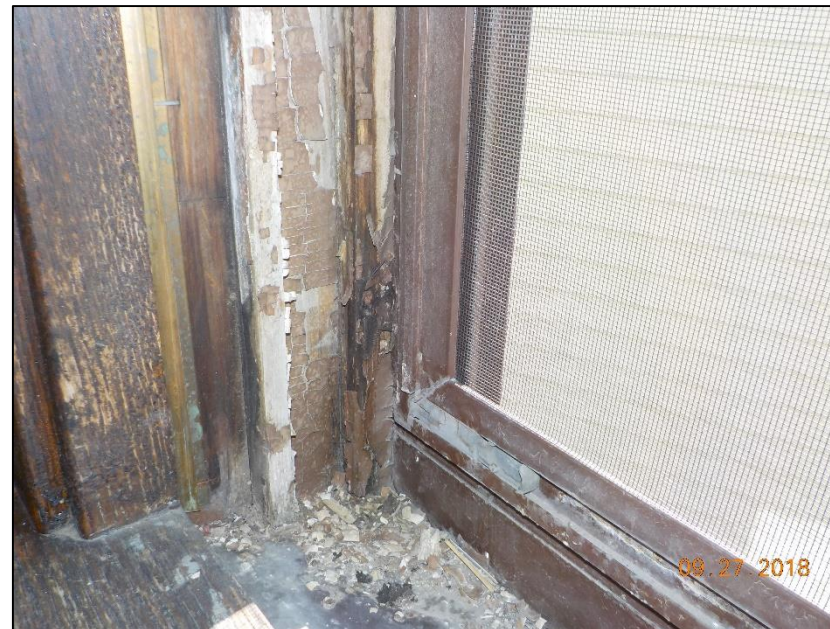
Hobbies/Work



# **COMMON HAZARDS**

## **IN MILWAUKEE HOMES**

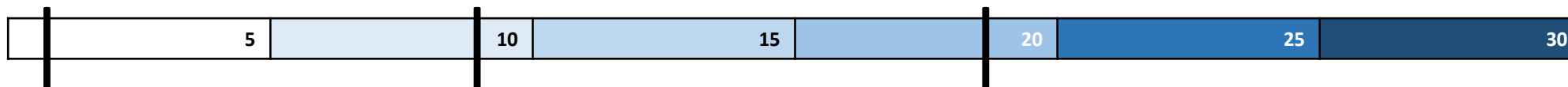
# Hazard | WINDOWS



Threshold for Action  
1 mg/cm<sup>2</sup>

Left Window  
9 mg/cm<sup>2</sup>

Left Window  
17.4 mg/cm<sup>2</sup>



XRF Reading | Concentration of Lead (mg/cm<sup>2</sup>)

# Hazard | HOLES IN WALLS

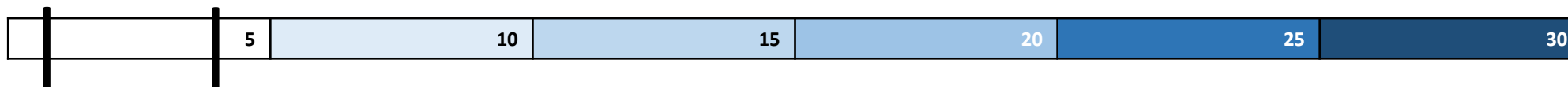
Before



Interim Control



Threshold for Action  
1 mg/cm<sup>2</sup>      4.1 mg/cm<sup>2</sup>



XRF Reading | Concentration of Lead (mg/cm<sup>2</sup>)



# Hazard | DOOR JAM

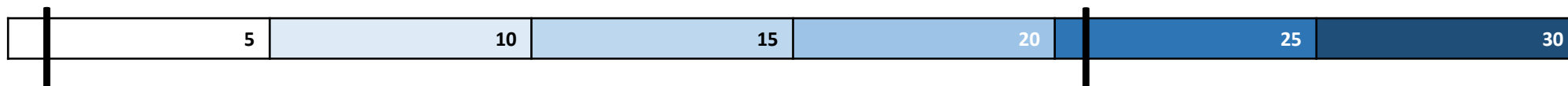
Before



Interim Control



Threshold for Action  
 $1 \text{ mg/cm}^2$



XRF Reading | Concentration of Lead ( $\text{mg/cm}^2$ )

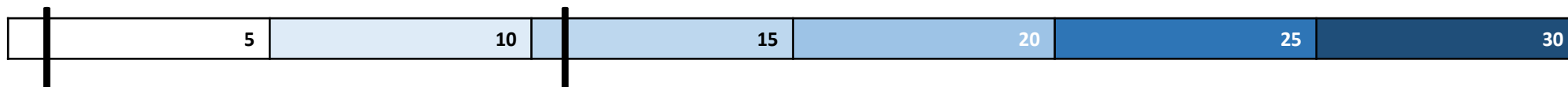


# Hazard | INTERIOR CHIPPING/PEELING PAINT



Threshold for Action  
1 mg/cm<sup>2</sup>

Stair  
10.7 mg/cm<sup>2</sup>



XRF Reading | Concentration of Lead (mg/cm<sup>2</sup>)

# Hazard | EXTERIOR CHIPPING/PEELING PAINT

Before, Window



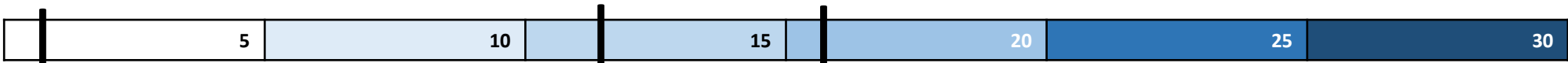
Before, Door Jam



Threshold for Action  
1 mg/cm<sup>2</sup>

Red Window  
12.1 mg/cm<sup>2</sup>

Door Jam  
15.8 mg/cm<sup>2</sup>



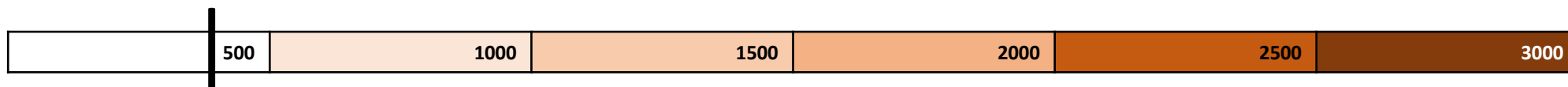
XRF Reading | Concentration of Lead (mg/cm<sup>2</sup>)



# Hazard | EXPOSED SOIL



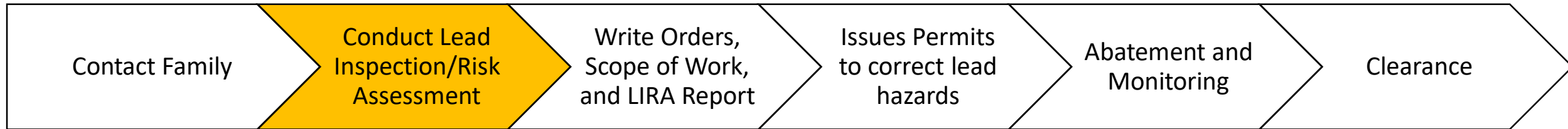
Threshold for Action  
400 ppm



5,700 ppm

Soil Sample, Play Area | Concentration of Lead (ppm)

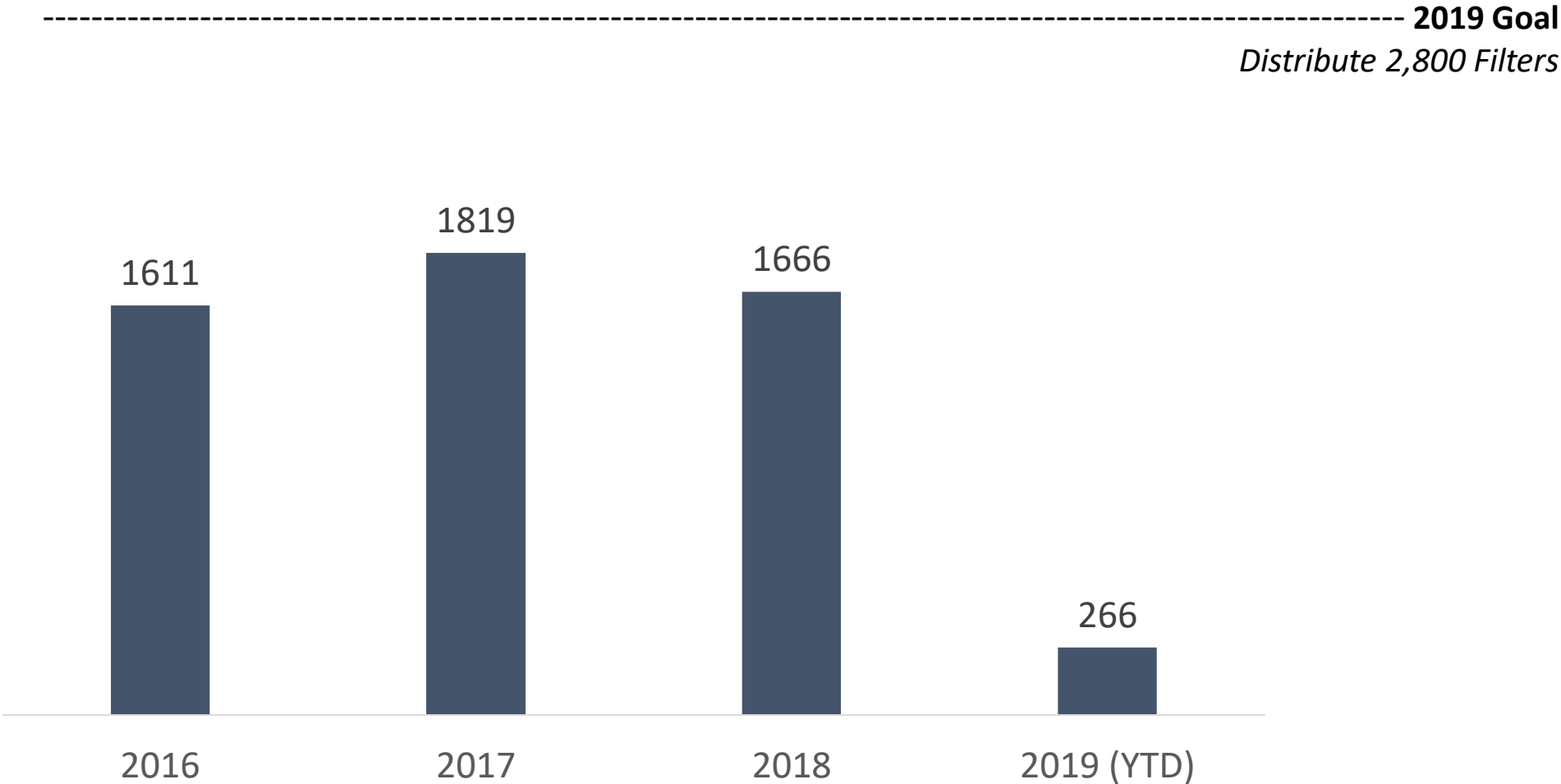
# LEAD INVESTIGATION PROCESS



**2019 Water Filter Distribution Plan**  
**– *File #181726* –**



# Filter Distribution



# Eligibility

1. Households in the City of Milwaukee with bottle-fed infants; **or**
2. Children with reported elevated blood lead levels greater than 20 ug/dL who live in the City of Milwaukee; **or**
3. State of Wisconsin Licensed or Certified childcare facilities located in the City of Milwaukee; **or**
4. Households in the City of Milwaukee **with a lead service line** and have
  - Children under 6 years of age; **or**
  - Children with blood lead levels greater than 5 ug/dL; **or**
  - Pregnant women or women who may become pregnant; **or**
  - Breastfeeding women.

# Distribution Partners

## **New 2019 partners:**

- Habitat for Humanity
- City of Milwaukee Head Start Programs

## **Continuing partnerships:**

- MHD Programs
- Milwaukee County WIC Programs Service City Residents
- Social Development Commission
- Sixteenth Community Health Centers
- City of Milwaukee Department of City Development

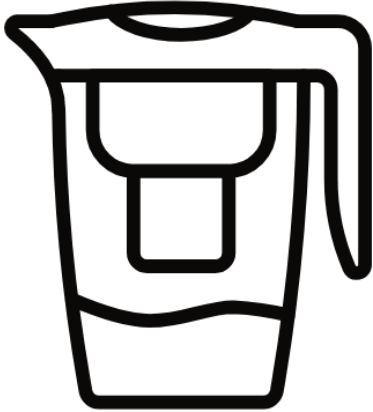
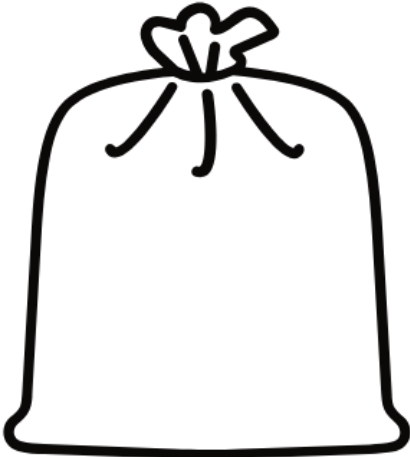
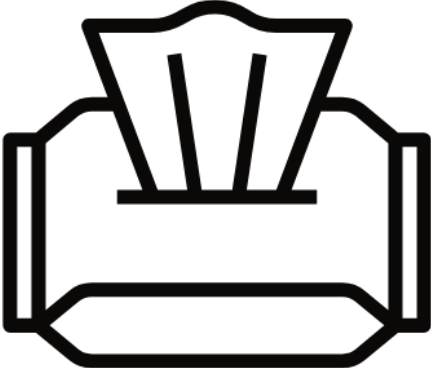
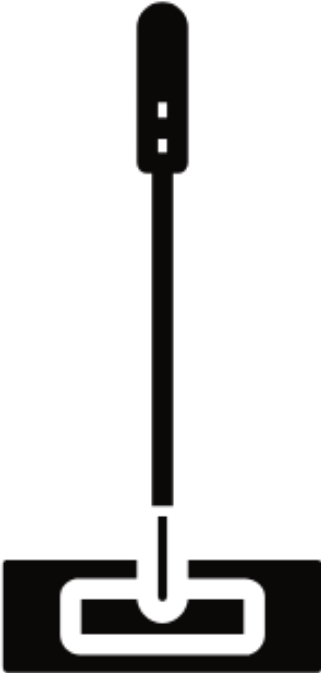
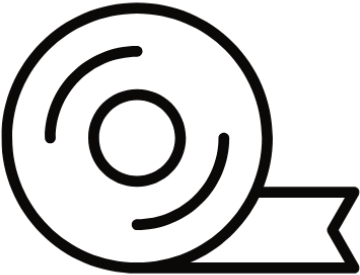


# Cartridge Replacement

City of Milwaukee Residents who have already received a POU filtration device are eligible to receive additional replacement cartridges.

Call (414) 286-2165

# Lead Safe Home Kits



# Lead Safe Videos



# MHD Social Media



@MKEHealth



@MKEHealth

# Thank You!

[www.milwaukee.gov/health](http://www.milwaukee.gov/health)

