



# Certificate of Appropriateness

Milwaukee Historic Preservation Commission/841 N Broadway/Milwaukee, WI 53202/phone 414-286-5722

## Property Description of work

### **1231 W. Historic Mitchell St., Mitchell Street Historic District**

Remove two storefront aluminum doors on the S. 13<sup>th</sup> Street façade and replacement with two aluminum storefront doors to match the existing system in place.

## Date issued 6/14/23

In accordance with the provisions of Section 320-21 (11) and (12) of the Milwaukee Code of Ordinances, the Milwaukee Historic Preservation Commission has issued a certificate of appropriateness for the work listed above. The work was found to be consistent with preservation guidelines. The following conditions apply to this certificate of appropriateness:

N/A

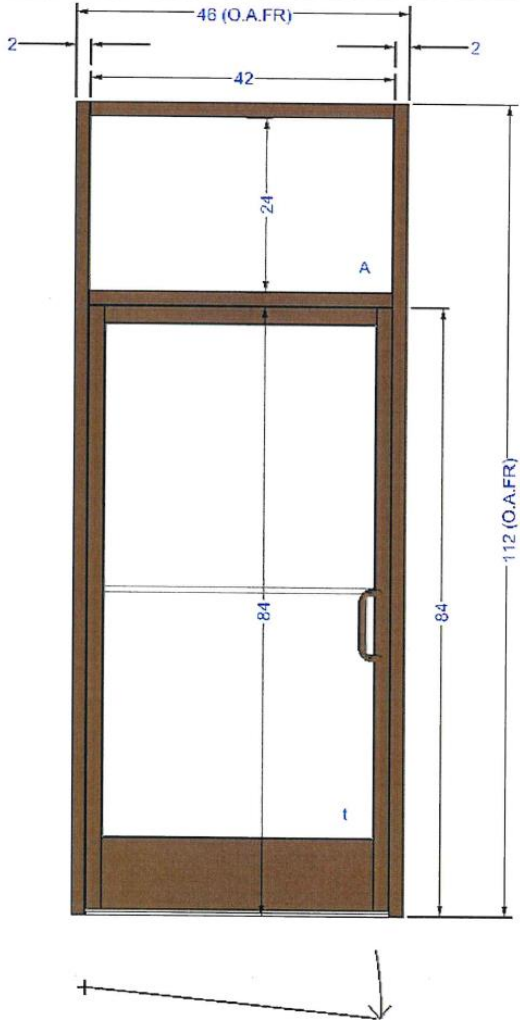
All work must be done in a craftsman-like manner, and must be completed within one year of the date this certificate was issued. Staff must approve any changes or additions to this certificate before work begins. Work that is not completed in accordance with this certificate may be subject to correction orders or citations. If you require technical assistance, please contact Historic Preservation staff as follows: Phone: (414) 286-5722 E-mail: [hpc@milwaukee.gov](mailto:hpc@milwaukee.gov).

If permits are required, you are responsible for obtaining them from the Milwaukee Development Center. If you have questions about permit requirements, please consult the Development Center's web site, [www.milwaukee.gov/lms](http://www.milwaukee.gov/lms), or call (414) 286-8210.

City of Milwaukee Historic Preservation

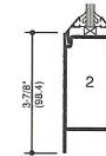
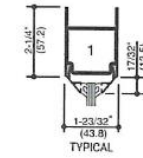
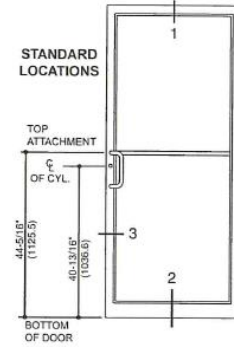
Copies to: Development Center, Ald. Perez, Keith Schultz

Project Name: ██████████ 1232 WEST HISTORIC MITCHELL STREET  
 Frame Set Name: 1210 Frame Name: 1210  
 Metal Group: MPG M451T CG/SS/OG STOPS UP D/S: 1 Frame Type: Standard  
 Required: 1 Panels: 1 Rows: 2 Frame Width: 46 Frame Height: 112  
 Back Member Color: #40 DARK BRONZE : PERMANODIC Face Member Color: #40 DARK BRONZE : P

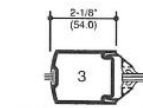


Replacement doors

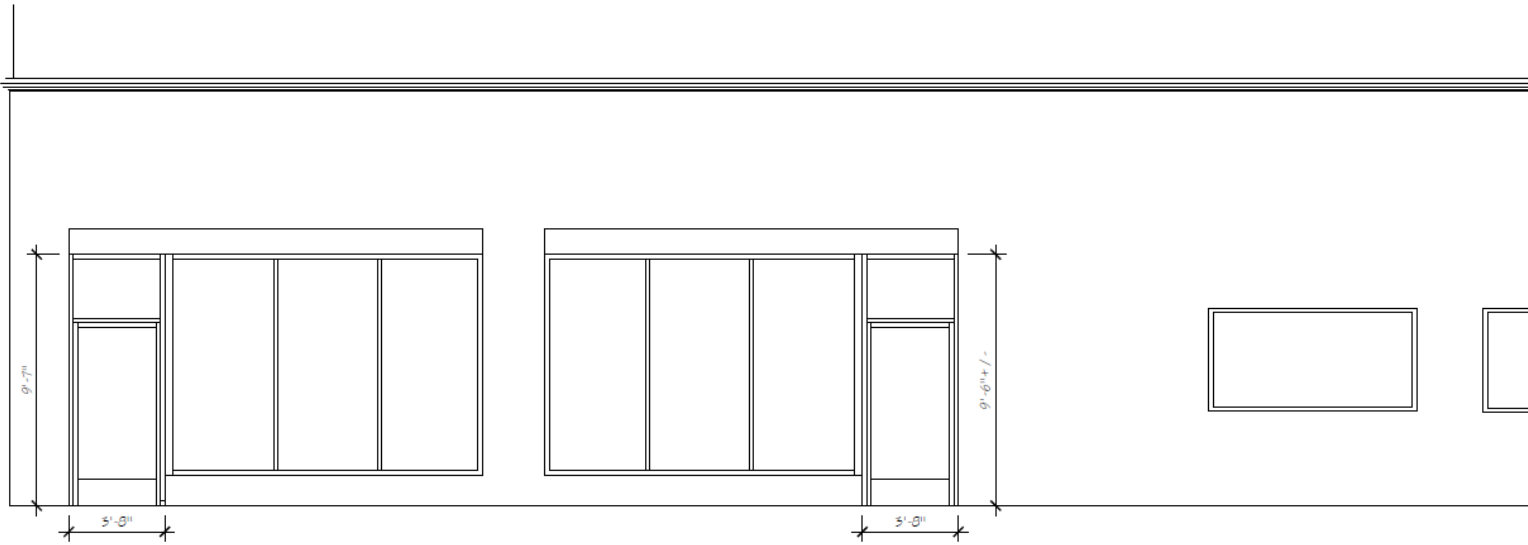
190 NARROW STILE



SINGLE ACTING



DOUBLE ACTING



1 WEST ELEVATION  
SCALE: 1/4" = 1'-0"

Storefront elevation