

NW 21-7-22  
ATLAS PAGE 354

354

354-02

CHAS. QUENTIN'S SUBD.



E. NORTH

AVE.

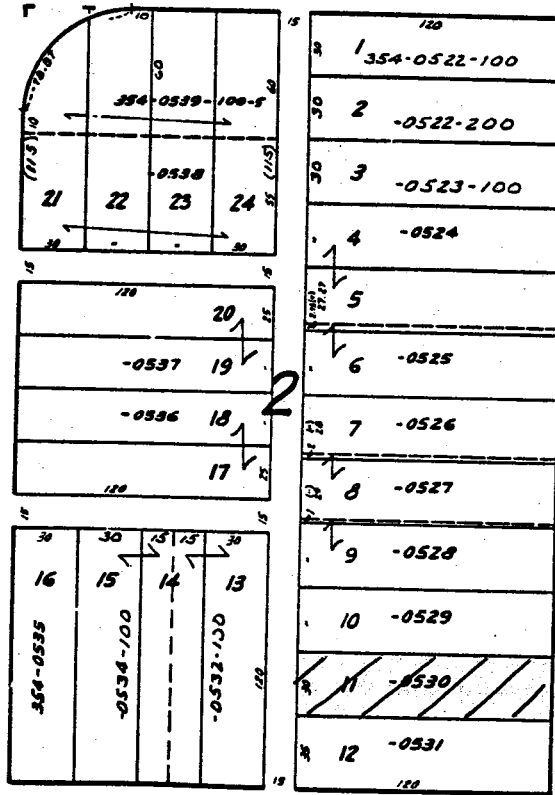
ST.

2238

2230

2220

N. BREMEN



2247

2243

2239

2235

2227

2220

2221

2219

2215

2211

2207

2203

ST.

N. WEIL

E. GARFIELD

AVE.

F. MCGAIN 11-9-66

4-24-66