

# City of Milwaukee Crash Analysis Report

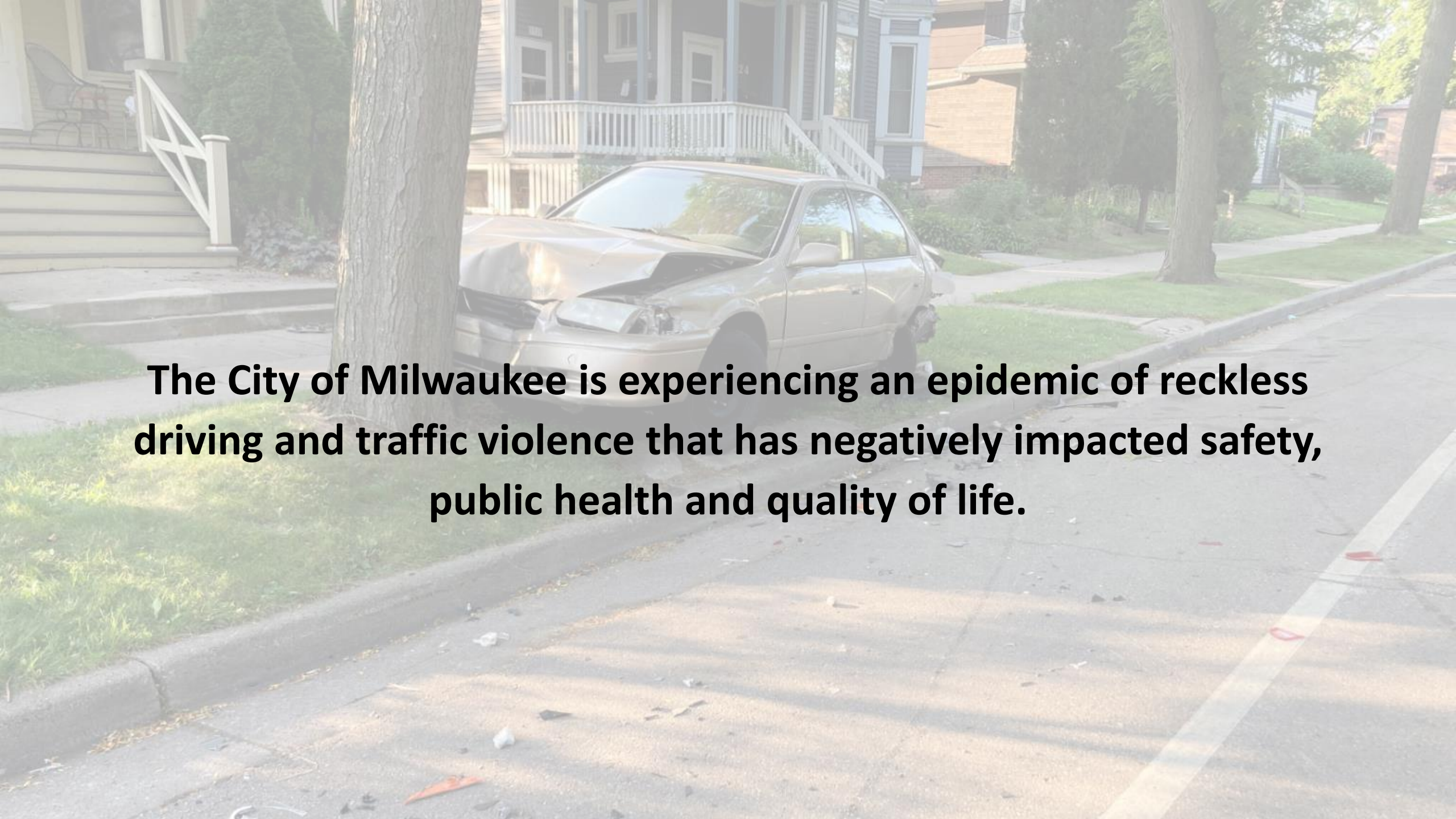
---



**TOOLE**  
DESIGN



*Full report available at:  
[Milwaukee.gov/Crash\\_Report](https://www.milwaukee.gov/Crash_Report)*



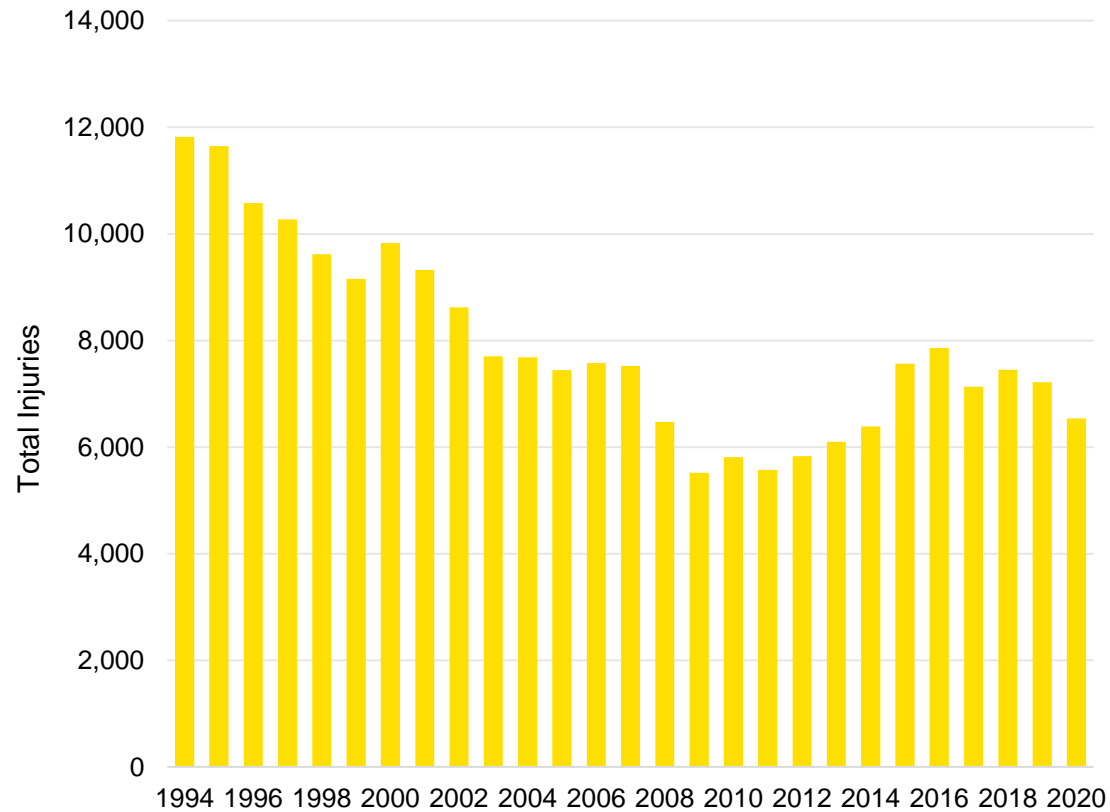
**The City of Milwaukee is experiencing an epidemic of reckless driving and traffic violence that has negatively impacted safety, public health and quality of life.**



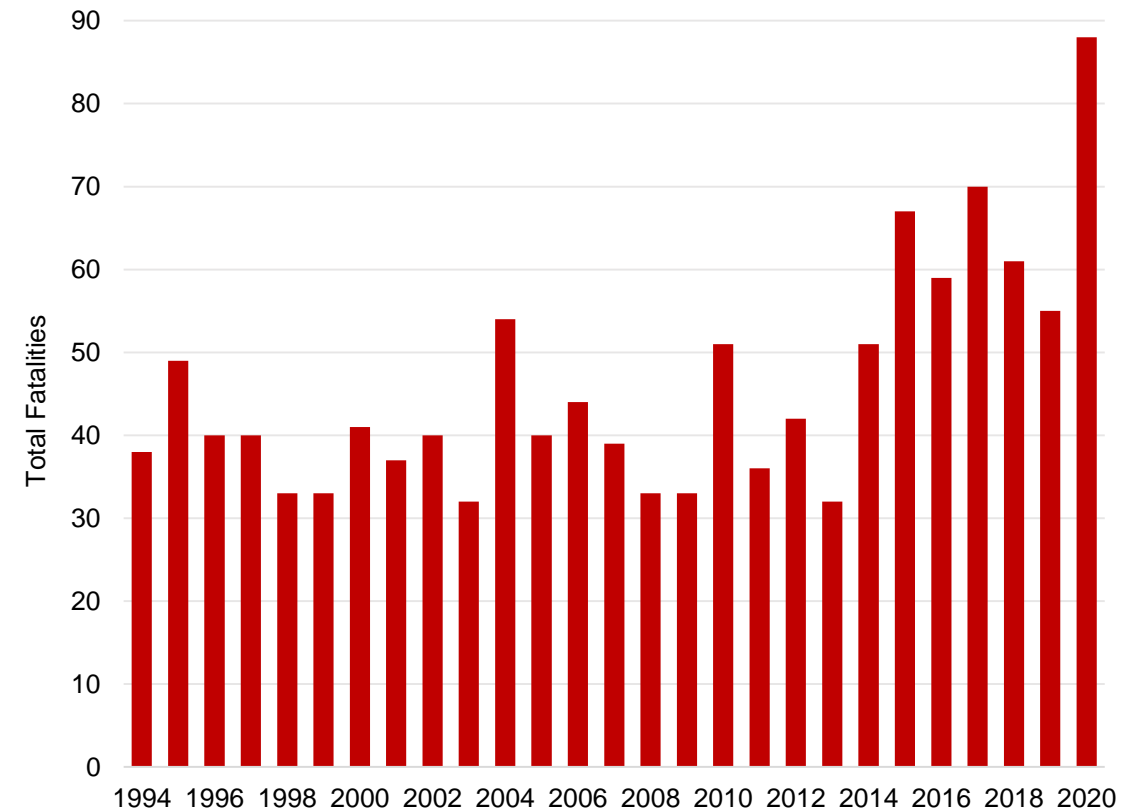
# Key Takeaways

# Injuries are going down. Fatalities are going up.

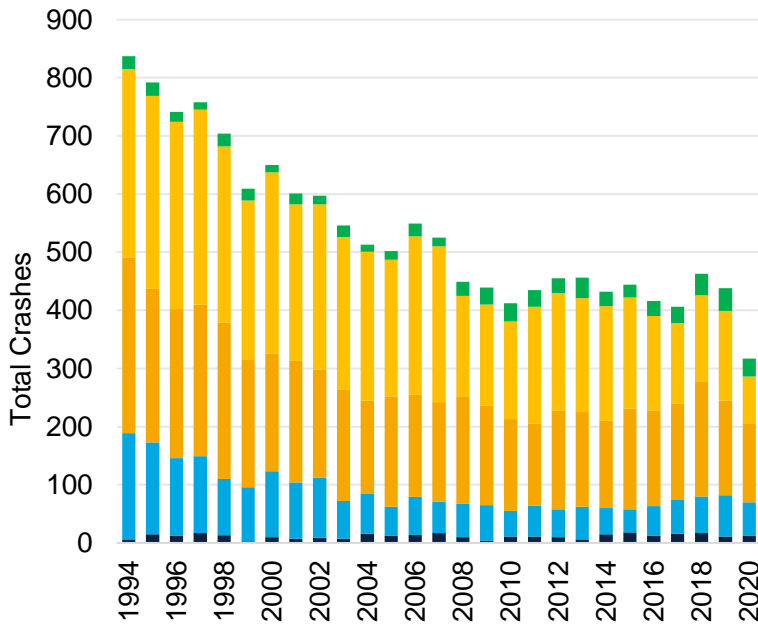
Injuries from All Reported Crashes



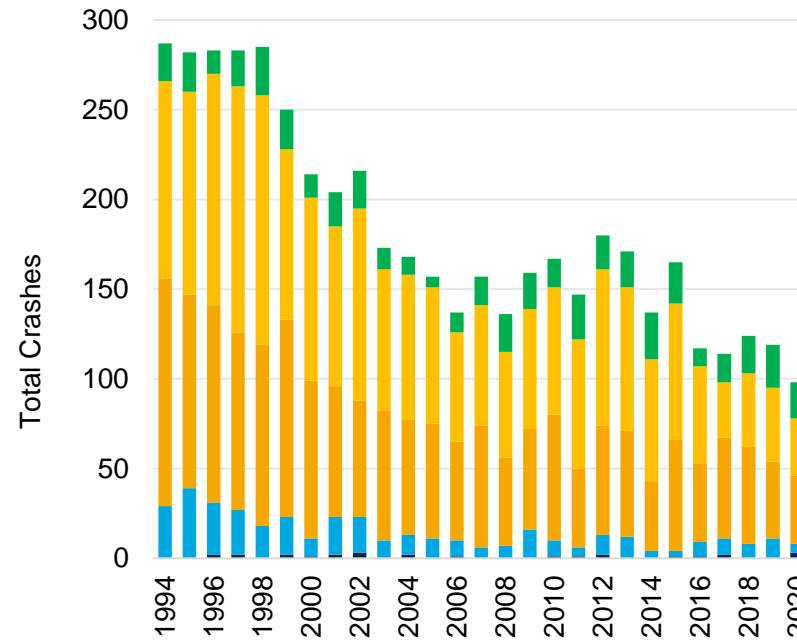
Fatalities from All Reported Crashes



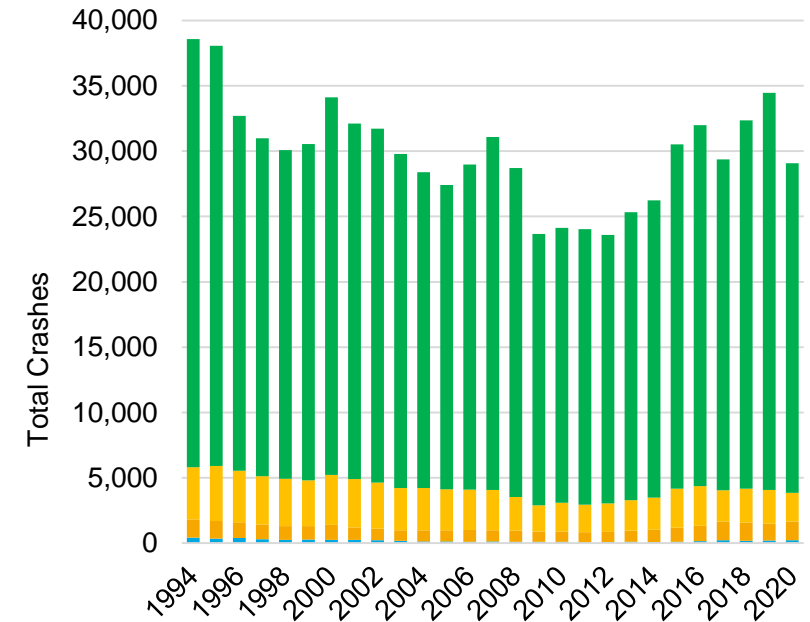
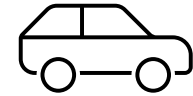
# Vulnerable street users are disproportionately likely to be killed or seriously injured



- Fatal
- Severe Injury
- Minor Injury
- Possible Injury
- Property Damage Only

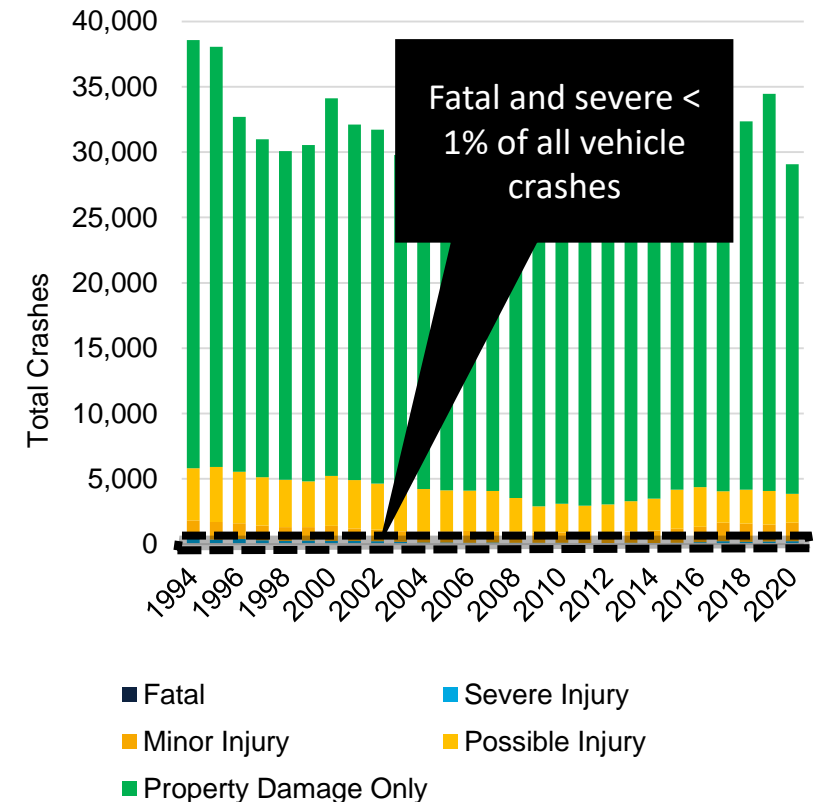
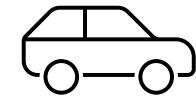
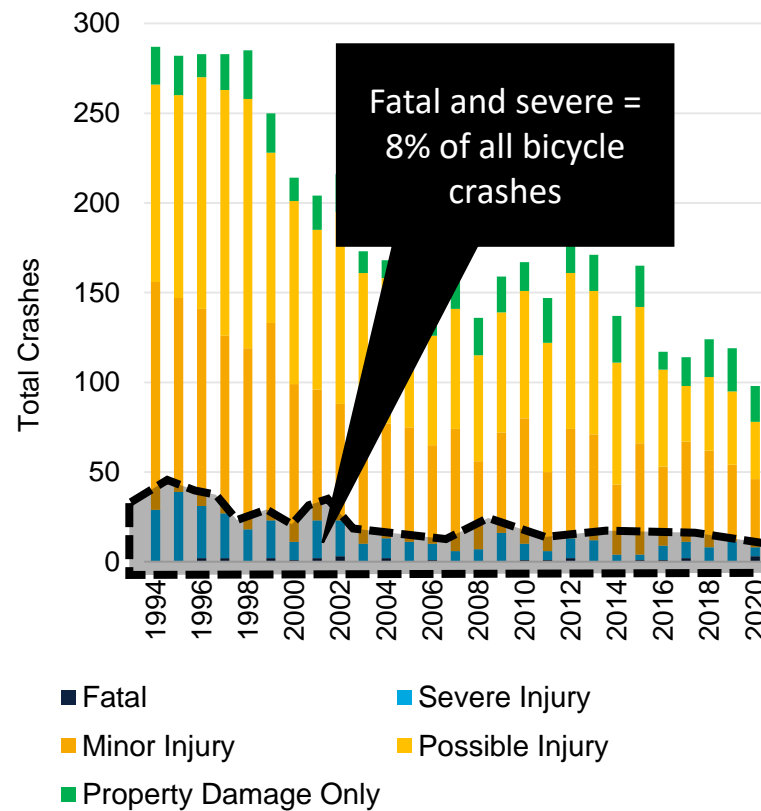
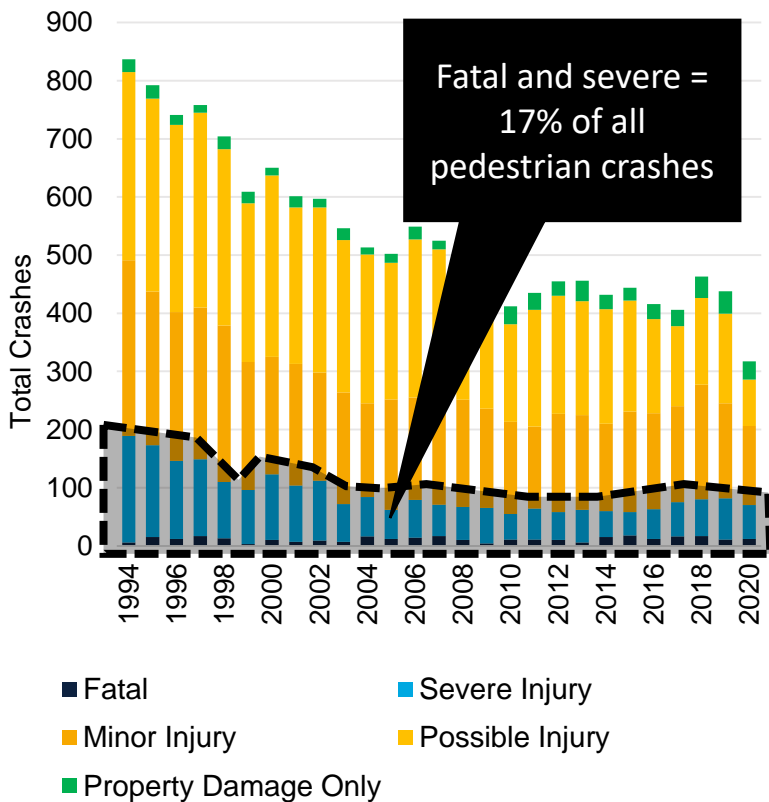


- Fatal
- Severe Injury
- Minor Injury
- Possible Injury
- Property Damage Only

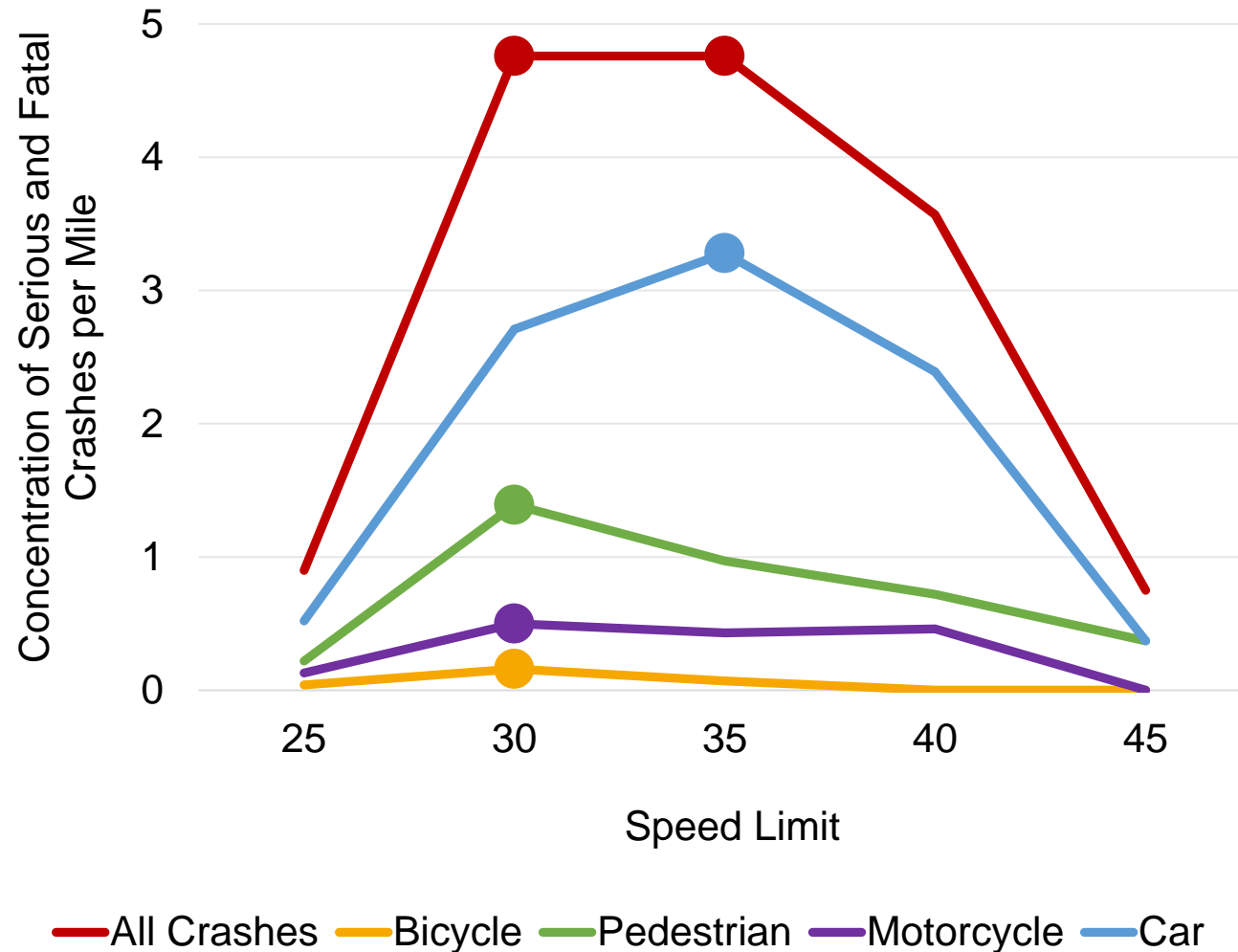


- Fatal
- Severe Injury
- Minor Injury
- Possible Injury
- Property Damage Only

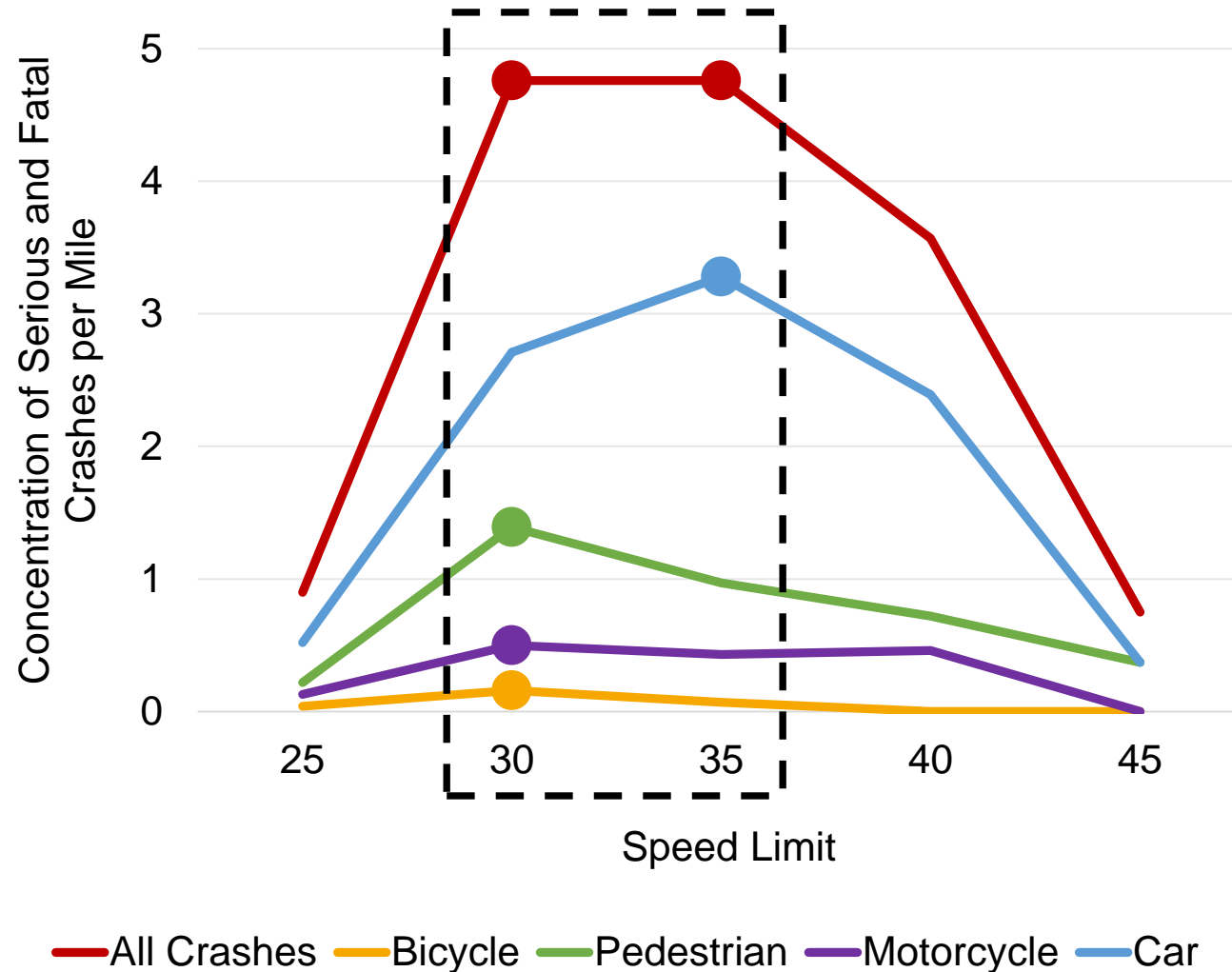
# Vulnerable street users are disproportionately likely to be killed or seriously injured



# Streets with speed limits of 30 to 35 mph are dangerous for all street users

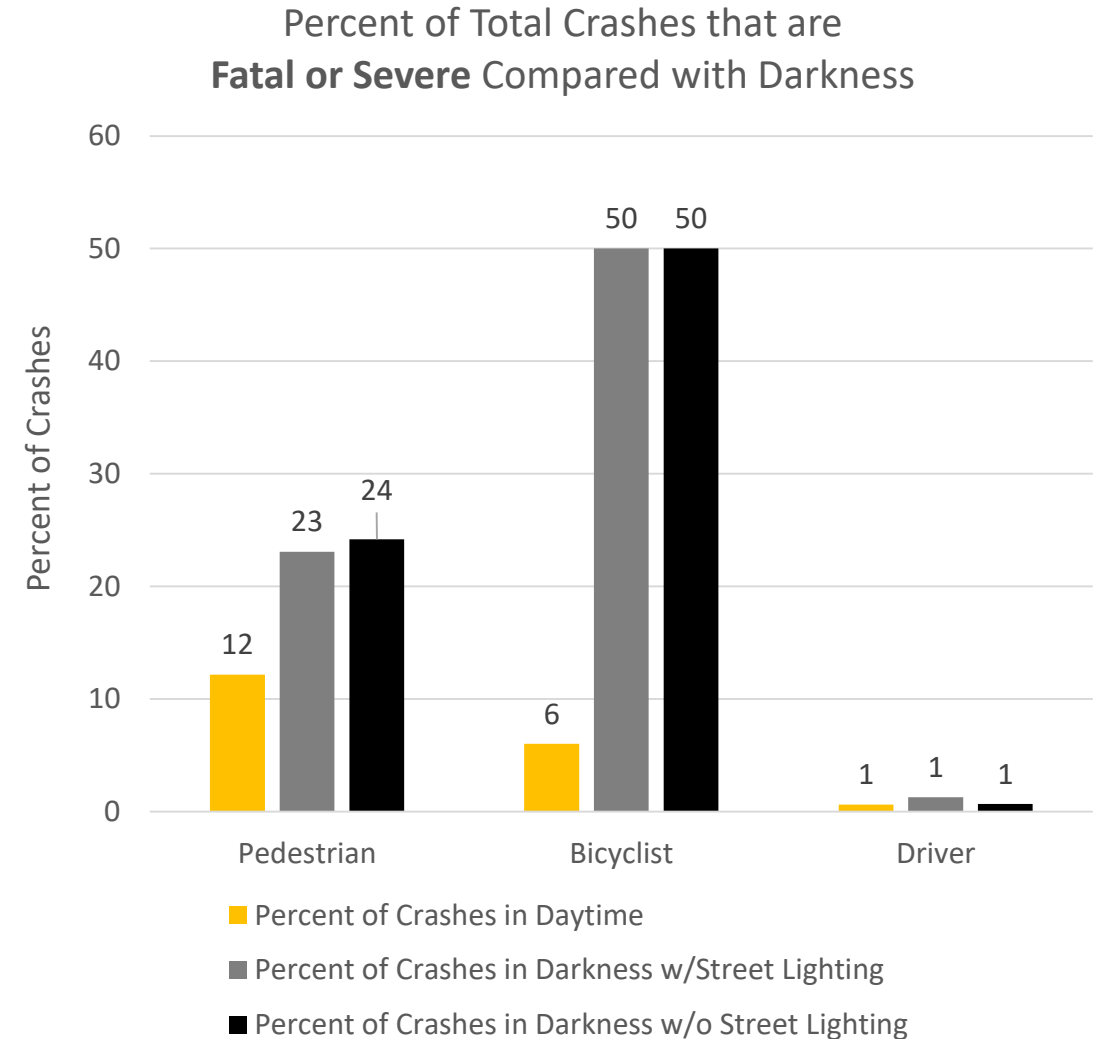
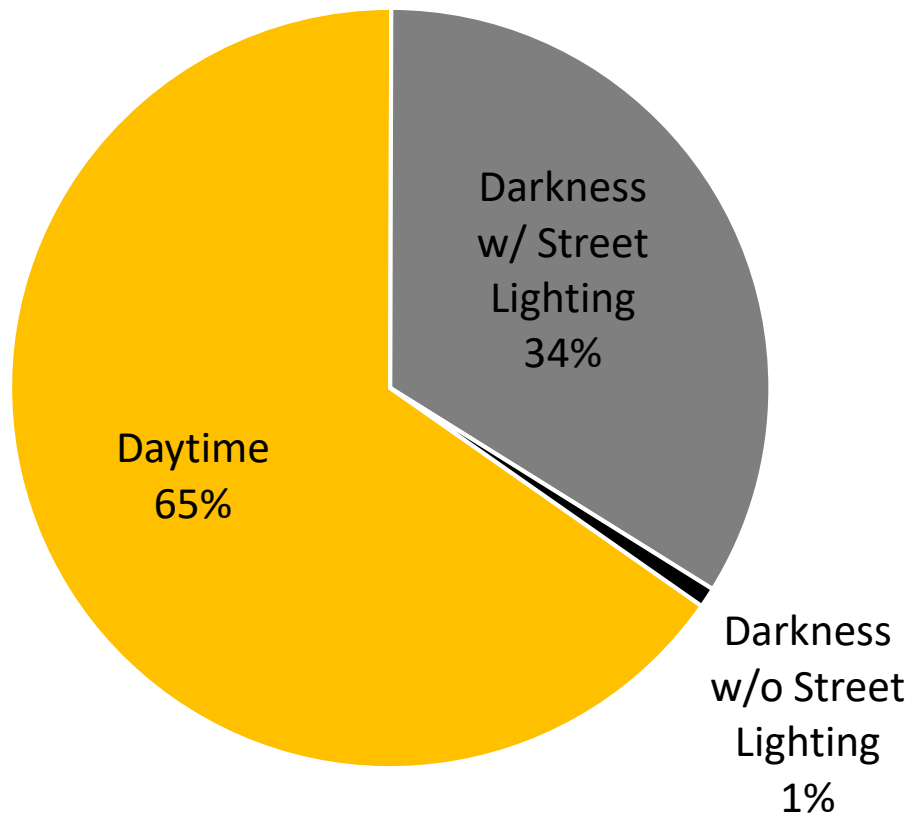


# Streets with speed limits of 30 to 35 mph are dangerous for all street users

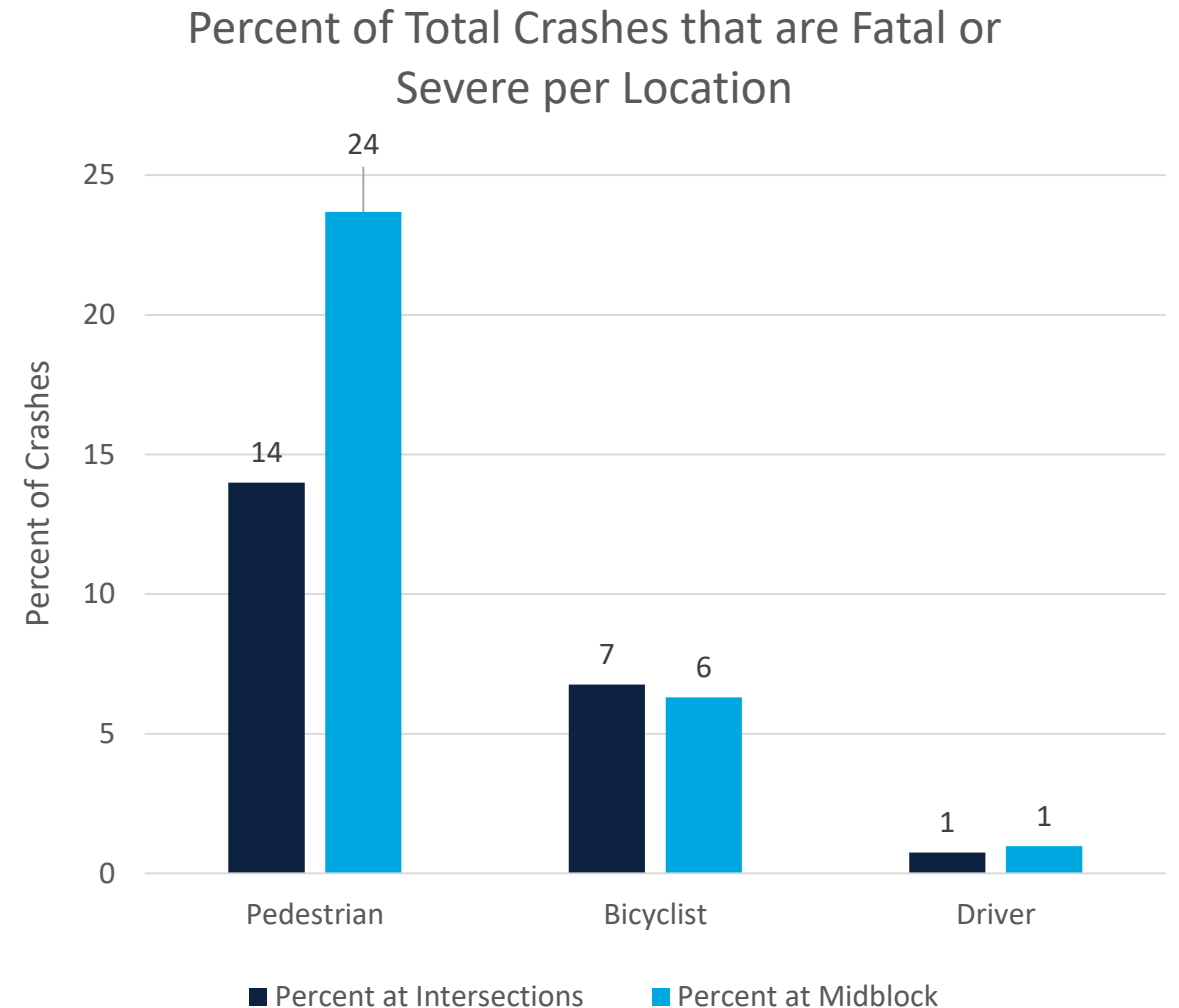
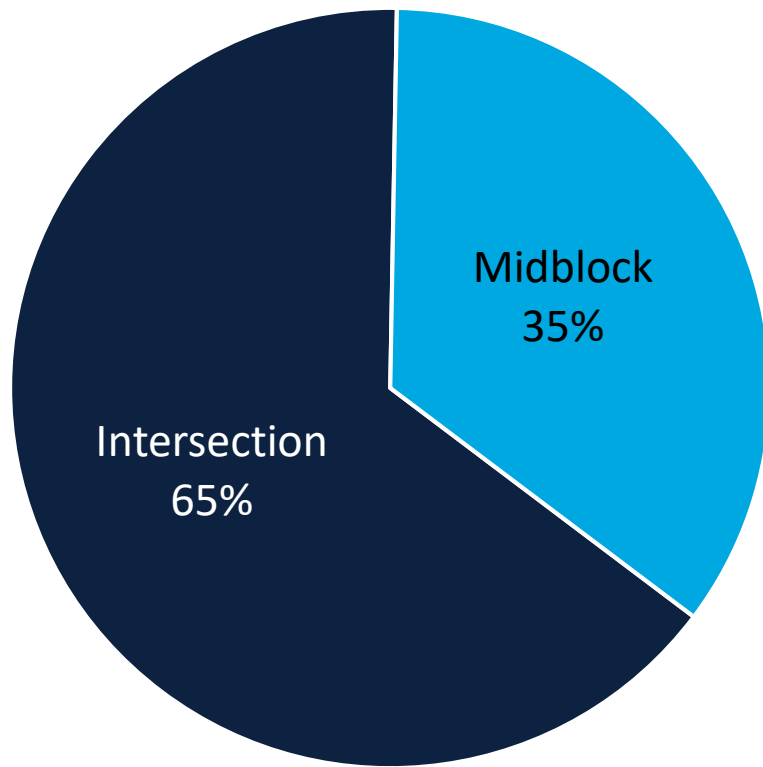




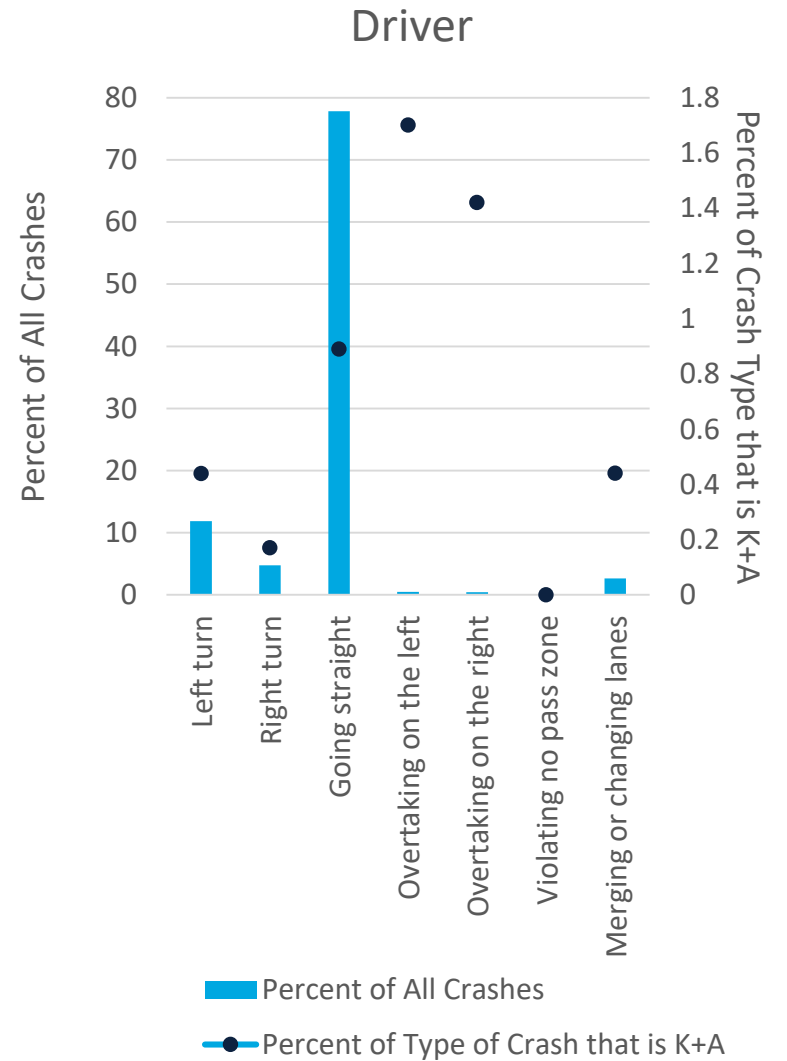
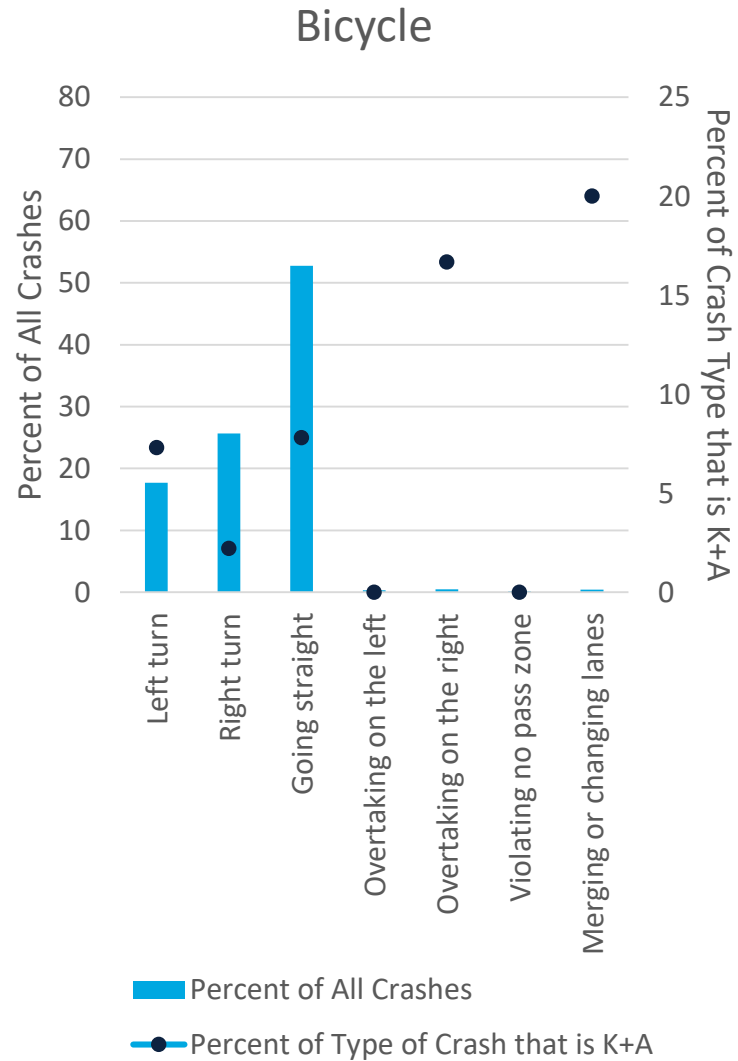
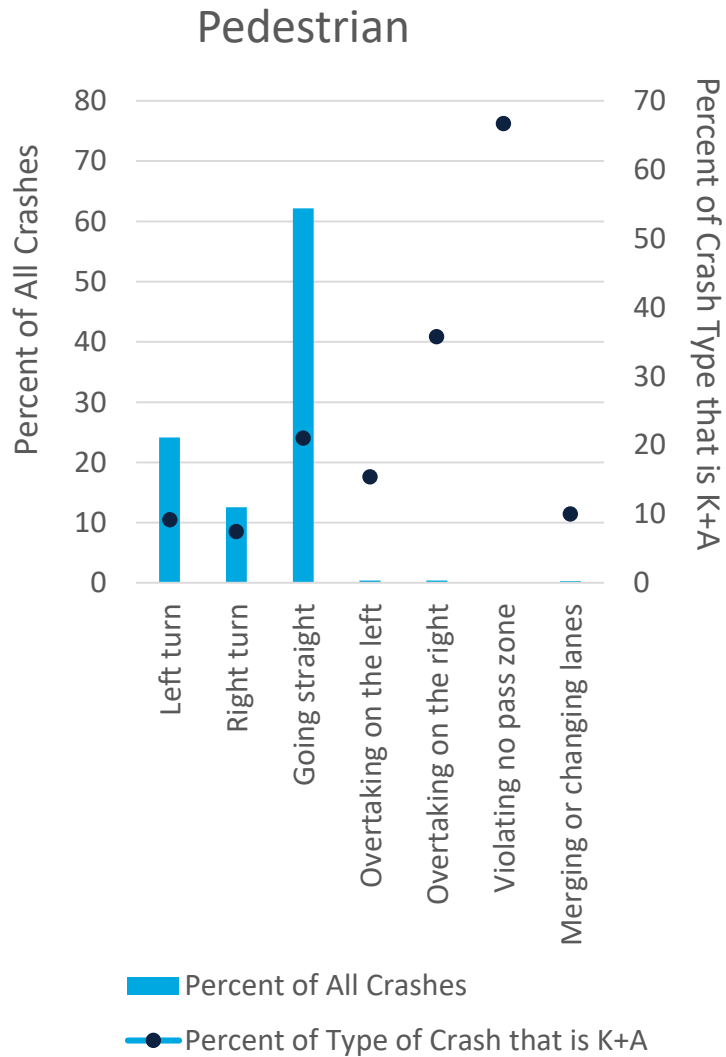
# Pedestrian and bicyclist crashes in dark and low light conditions are especially severe



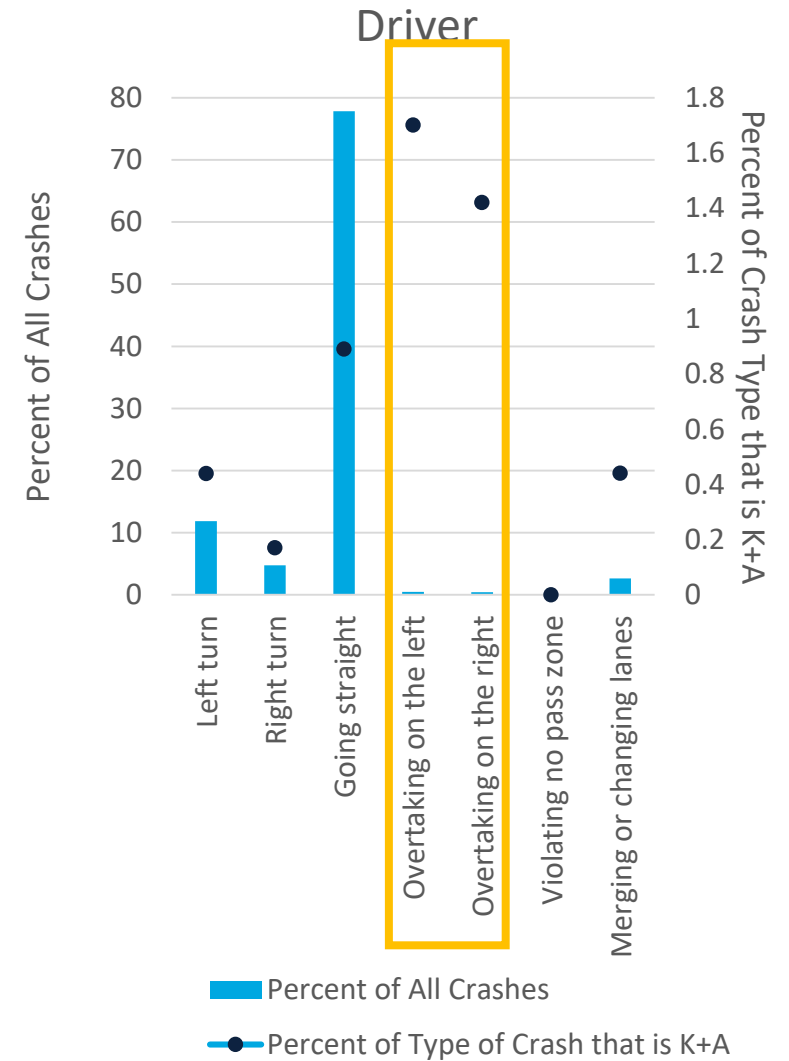
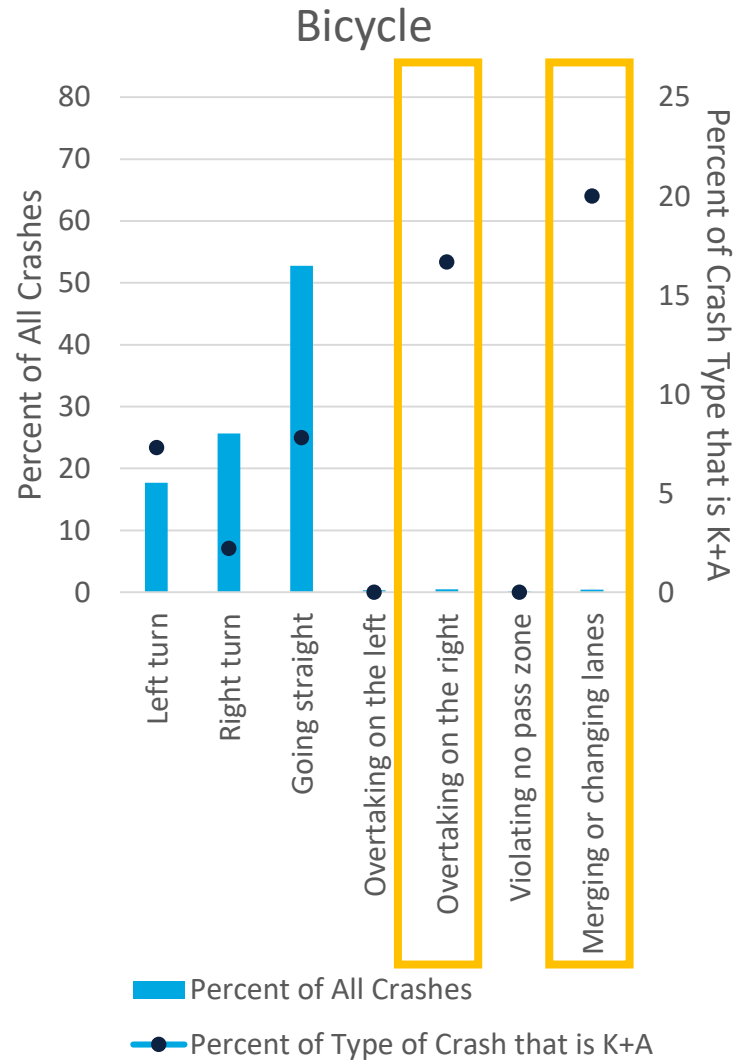
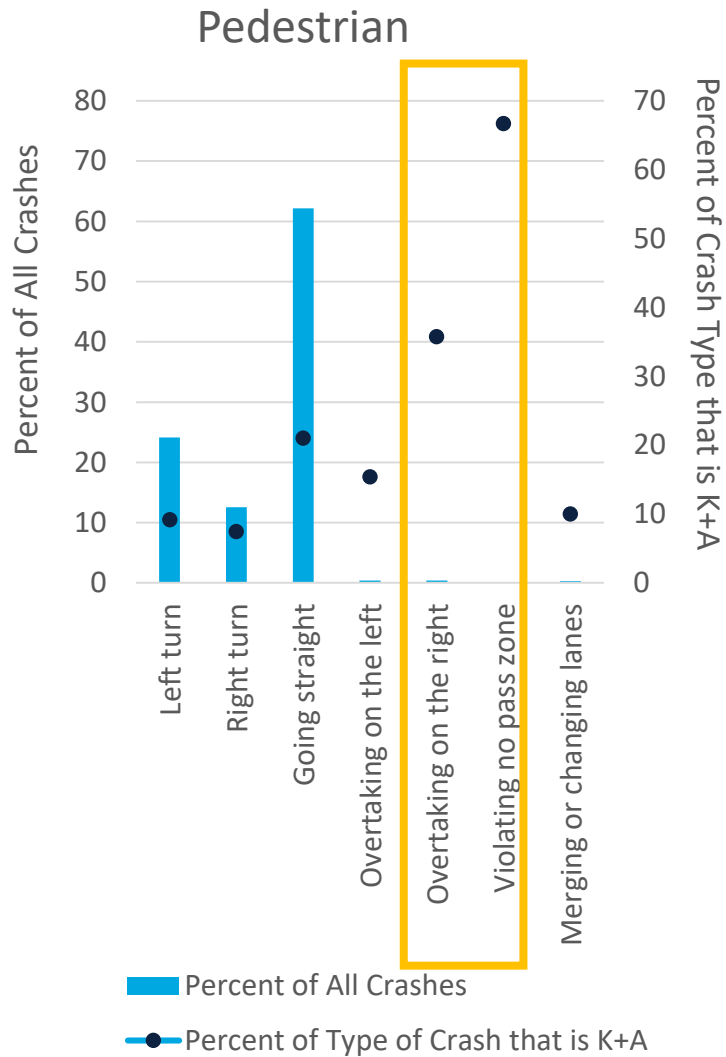
# More crashes happen at intersections, but they are more likely to be severe midblock



# Crashes by Driver Action

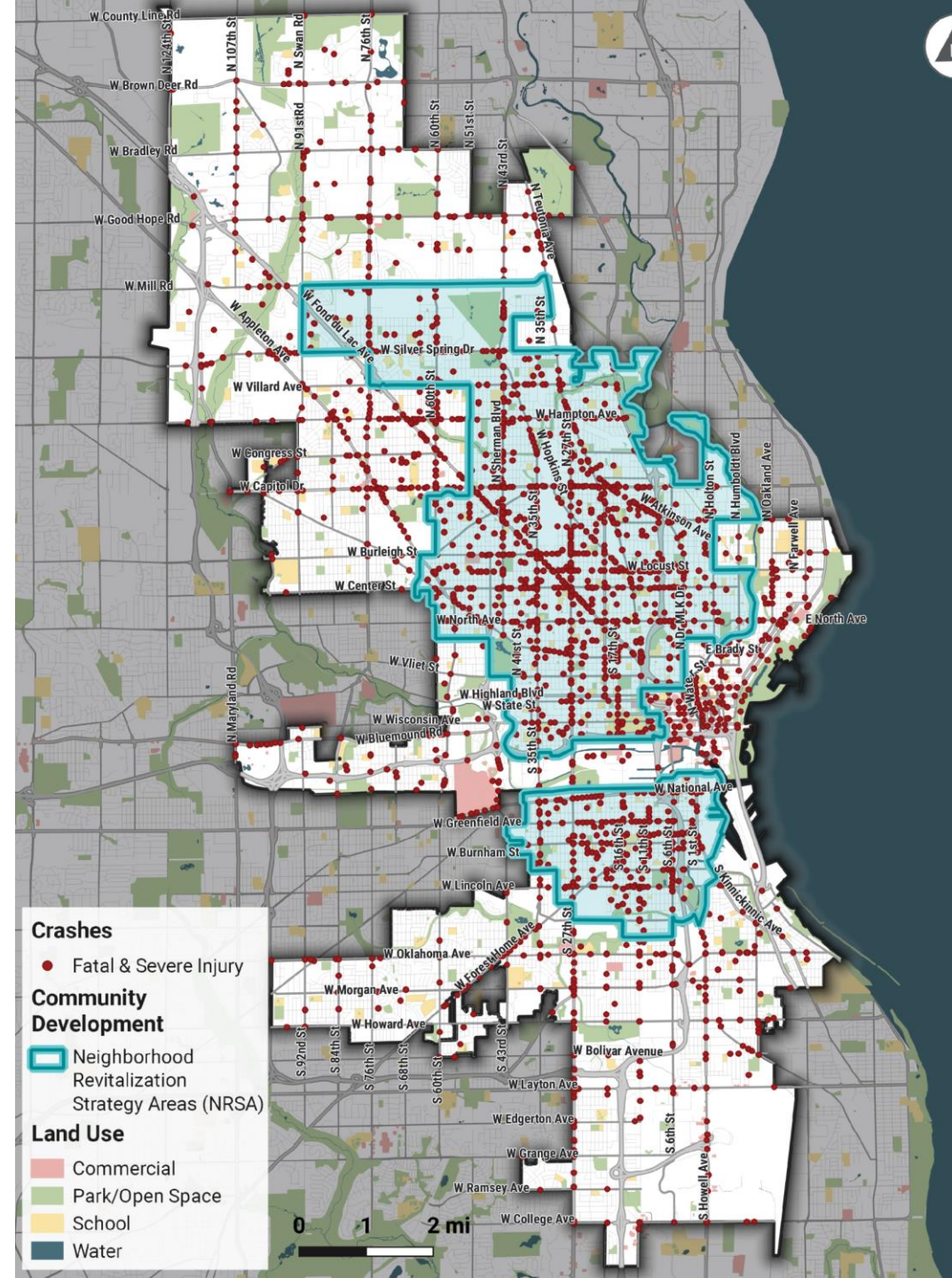


# Crashes by Driver Action



# Crashes in NRSAs

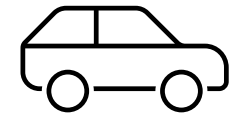
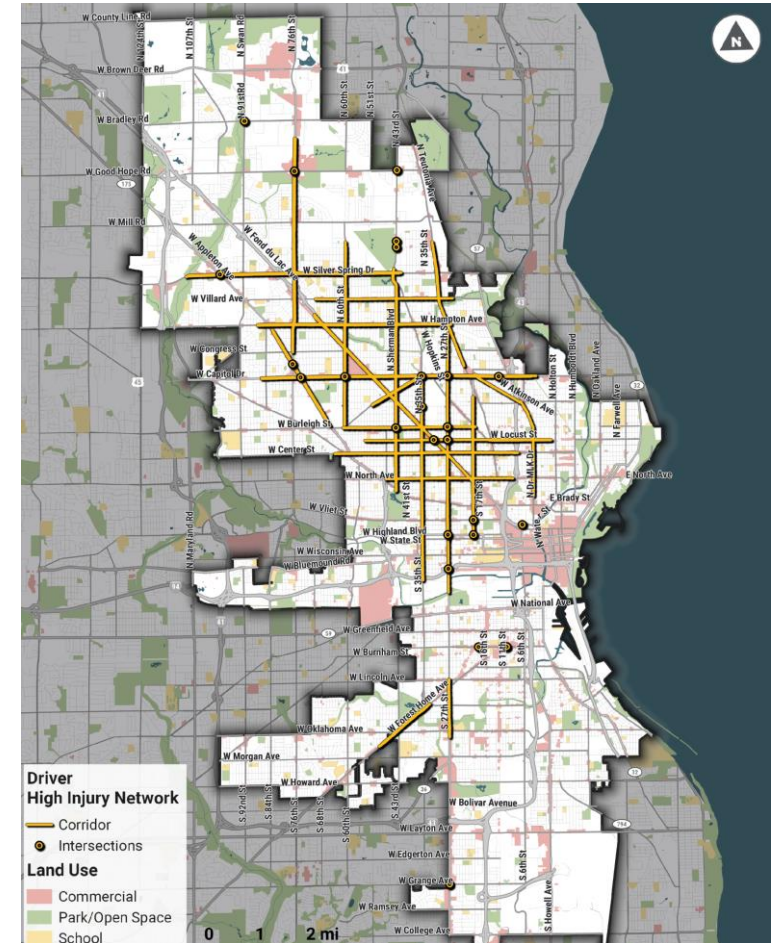
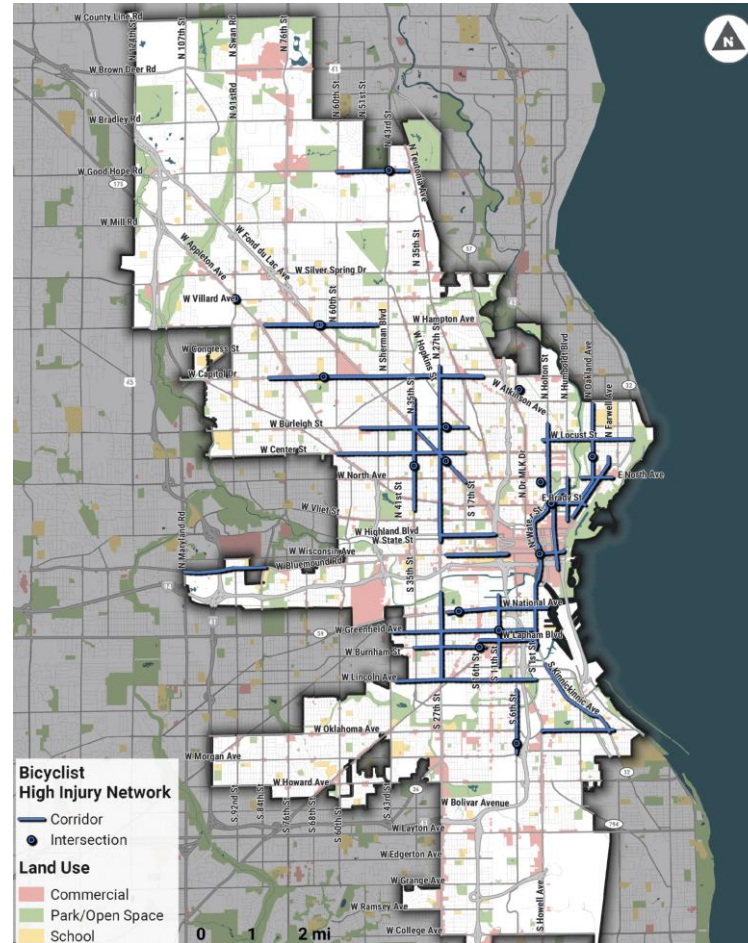
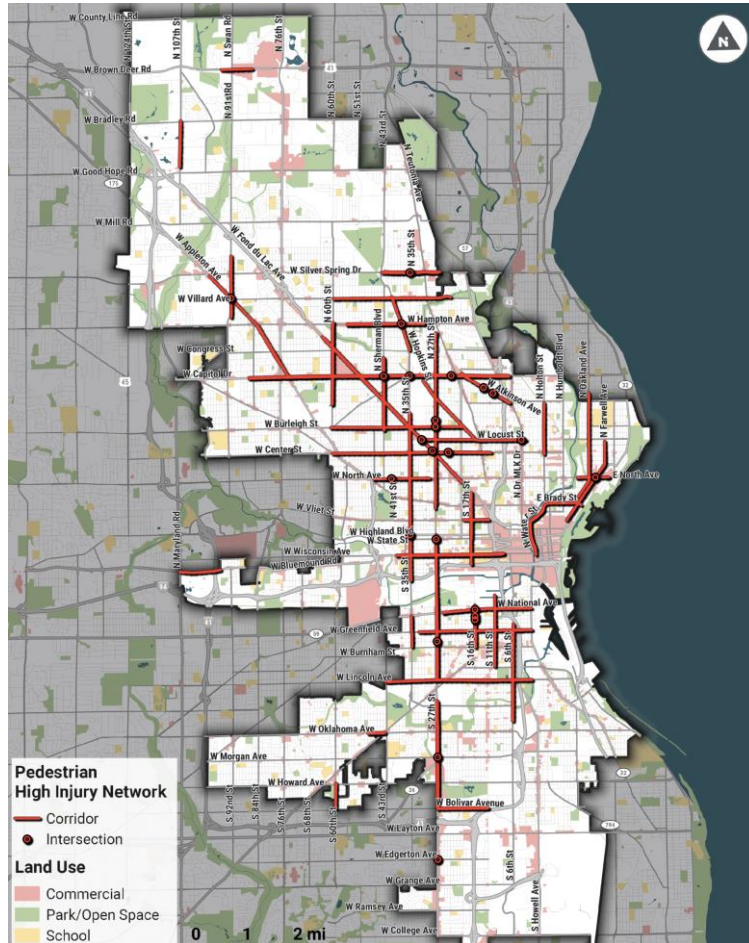
- Streets are more likely to be:
  - 30-35 mph streets
  - Higher traffic volumes
- More likely to involve:
  - Drivers overtaking on the left or right
  - Hit-and-run drivers
  - Drugs





# High Injury Network

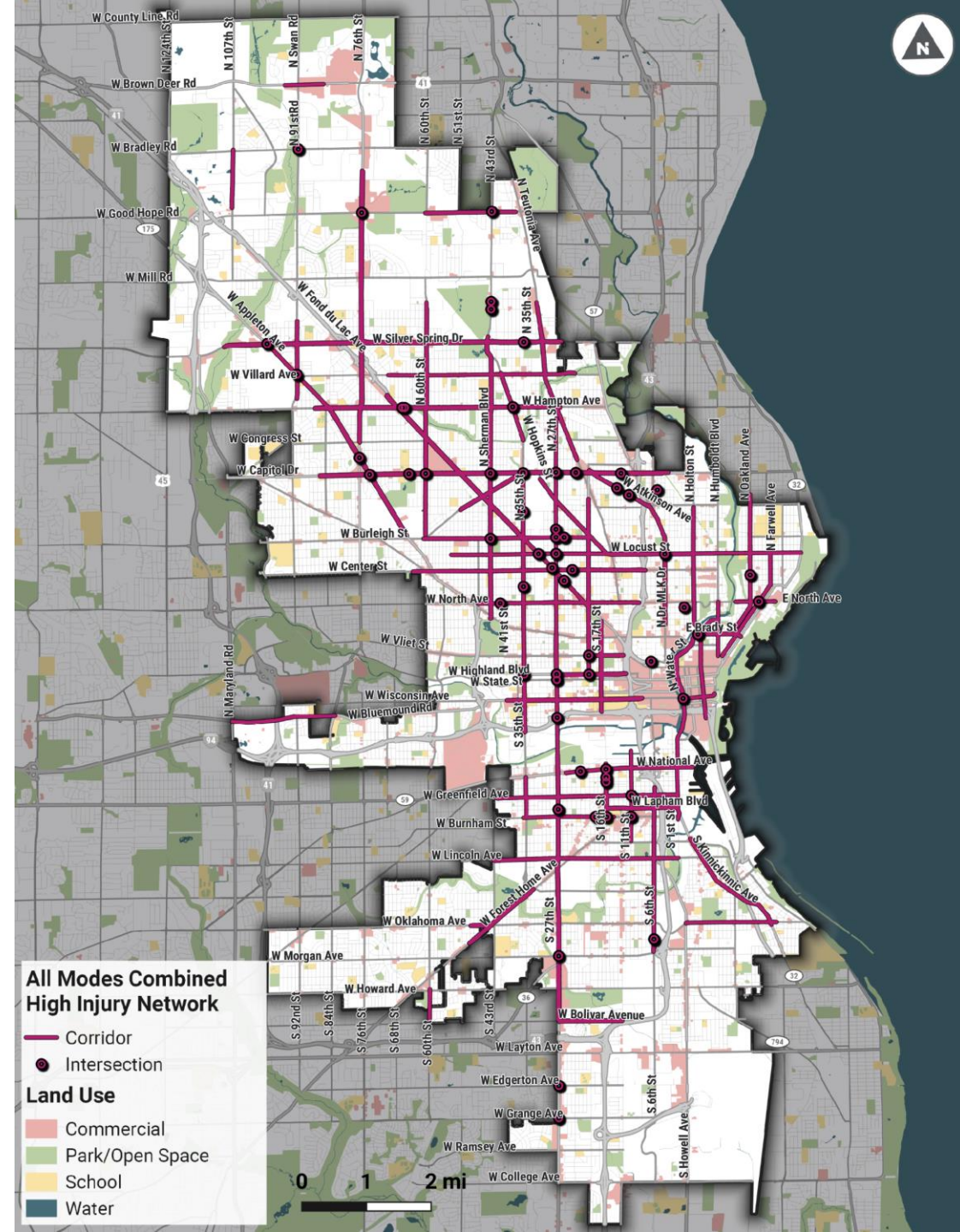
# Modal HINs



# All Modes HIN

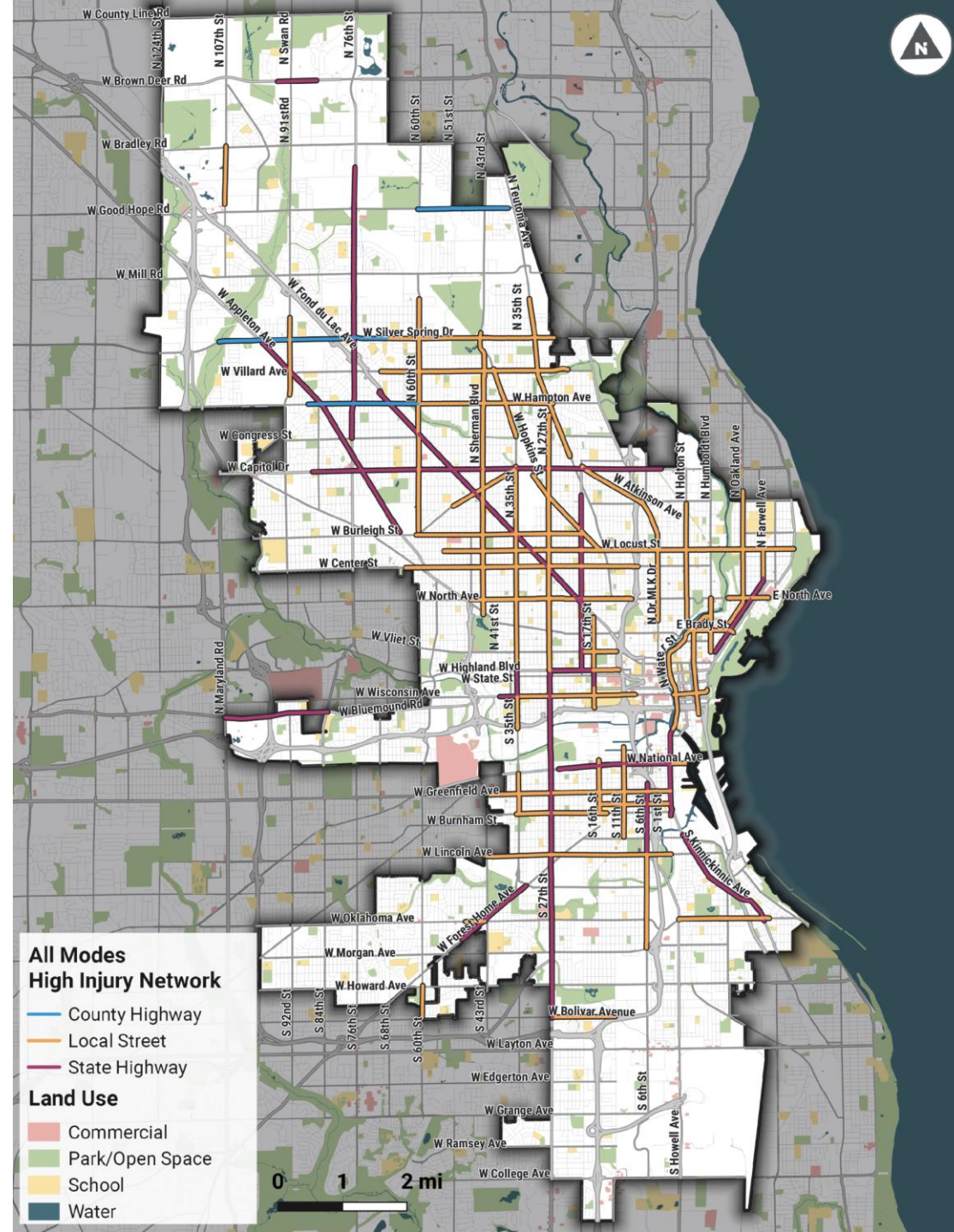
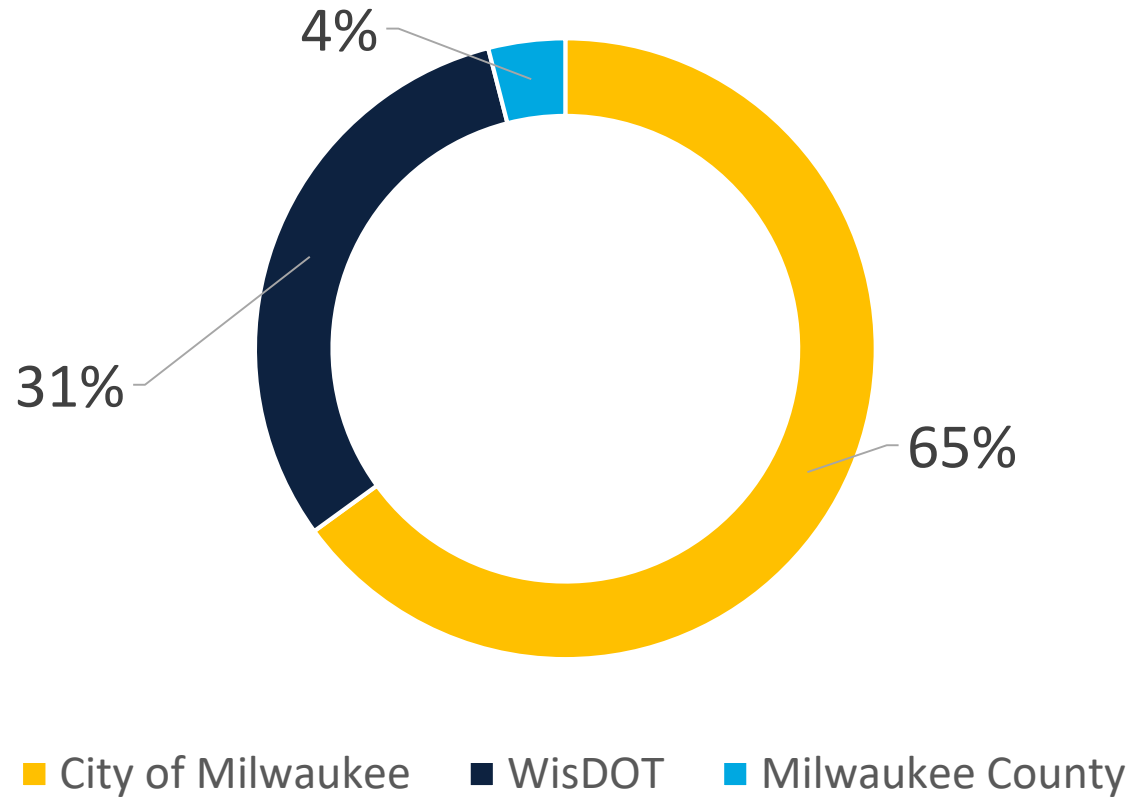
## Project Prioritization Model – Top Priority Streets & Intersections

- **Fond Du Lac Avenue** from Armitage Ave to 20th St
- **Capitol Drive** from 85th St to 6th St
- **Hampton Avenue** from Appleton Ave to 31st St
- **35th Street** from Canal St to Nash St
- **Wisconsin Avenue** from 25th St to 9th St
- **Center Street** from Lisbon Ave to 11th Ln
- **National Avenue** from 25th St to 1st St
- **Dr Martin Luther King Jr Dr & Locust St**
- **27th Street** from Euclid Ave to Cornell St
- **Burleigh Street** from 60th St to Hopkins St





# HIN Jurisdiction



# How can we use the HIN?

- Project prioritization
- Grant funding
- Project types

## Project Prioritization Model

Indicator	Criteria	Weight
Use	Volumes; Population Density	10
Equity	NRSAs; Race; vehicle availability; persons with a disability; environmental justice	20
Safety	High Injury Network; crash risk; injury crashes; fatal crashes	20
Condition (when applicable)	PQI; 286-CITY	50

# How can we use the research?

- Design for most dangerous behaviors
- Prioritize areas of the City most affected by crashes
- Marketing and communications





**Questions?**

**Full report available at:  
[Milwaukee.gov/Crash\\_Report](https://milwaukee.gov/Crash_Report)**