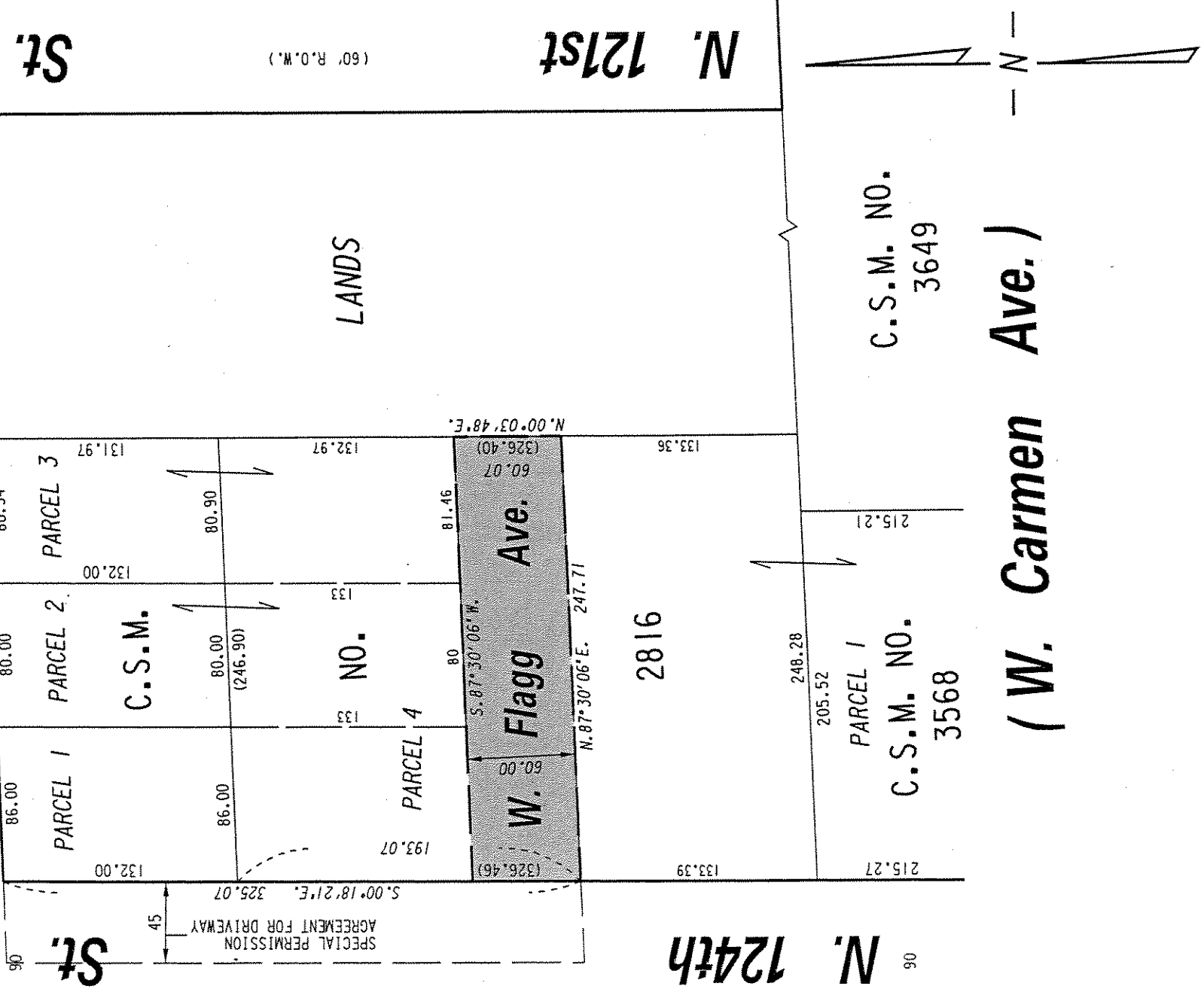


S.W. 1/4 SEC. 30, T.8N., R.2E.

181

W. Bobolink Ave. (60' R.O.W.)



MAKESHIA COUNTY LIMITS
MILWAUKEE COUNTY LIMITS
SEC. LINE

PROPERTY TO BE
RESERVED FOR
PUBLIC STREET PURPOSES

FILE NO.
INFRASTRUCTURE SERVICES DIVISION
MILWAUKEE, WISCONSIN

ASSIGNED TO: W.E. FUCHS
DRAWN BY: W.E.F.
PROJECT/GRANT NO.: WK52360068
APPROVED BY:
CH'K'D. BY: W.E. FUCHS
DATE: AUG. 30, 2007
SCALE: 1" = 80'

Marion Lindholm
CENTRAL DRAFTING & RECORDS MANAGER

[Signature]
CIVIL ENGINEER