



**Milwaukee Action Network Inc. (M.A.N.I.)**

Milwaukee – Abuja Sister Cities

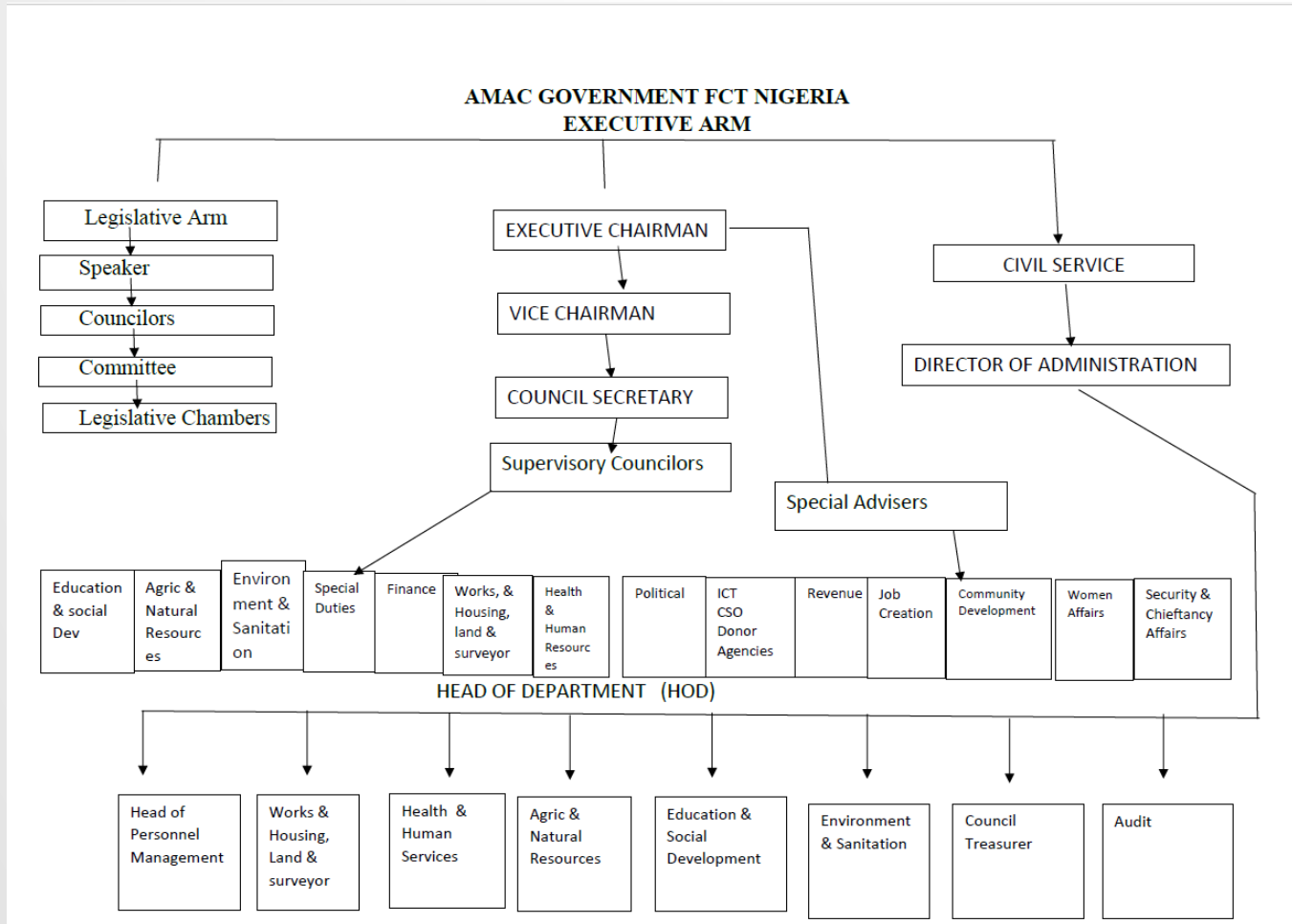
# Milwaukee Action Network Inc. (Mani)

- Introduction
- Who we are?

# Why a Sister City Relationship With Abuja

- We seek to forge a meaningful sister city partnership that brings
  - Cultural exchange
  - Economic growth
  - Trade and export expansion
  - Innovation and Technology advancement
  - Educational collaboration, and more for both cities
- **Common Ground**
  - Shared values and aspirations provide a strong foundation for this partnership.
  - Both Milwaukee and Abuja are committed to promoting diversity, inclusivity, and sustainable growth within their communities

# AMAC Organizational Chart



# MANI – Our Approach

- Cultural and Artistic Exchanges
- Economic Development Opportunities
- Educational Collaboration
- Environmental Sustainability
- Social and Humanitarian Initiatives

# Cultural Exchange Programs

- Our approach includes a variety of cultural exchange initiatives:
  - Art exhibitions showcasing local talent from both cities
  - Music festivals featuring traditional and contemporary performances
  - Culinary events introducing the rich flavors of each city's cuisine



# Economic Opportunities

- The sister city partnership holds potential for economic growth:
- Trade missions to explore new markets and business partnerships
- Business delegations to foster collaboration between local enterprises
- Tourism promotion to encourage cross-border travel and cultural exploration



# Educational Collaboration



A cornerstone of this partnership is educational collaboration:



Student exchange programs to facilitate cross-cultural learning



Scholarships for academic achievement and cultural enrichment



Joint research projects addressing global challenges



# Environmental Sustainability

The partnership will extend to environmental initiatives:

Exchange of sustainable practices, emphasizing eco-friendly solutions

Collaborative efforts to combat climate change and promote conservation

# Social and Humanitarian Initiatives

Together, we can make a positive impact through social and humanitarian projects:

Collaborative efforts to alleviate poverty and improve healthcare

Community development projects targeting vulnerable populations

Mutual support during times of crisis and disaster relief

# Current activities



Economic Development Opportunities



Community Engagement



Advocacy and Awareness



Building Partnerships



Research and Planning

QUESTIONS?