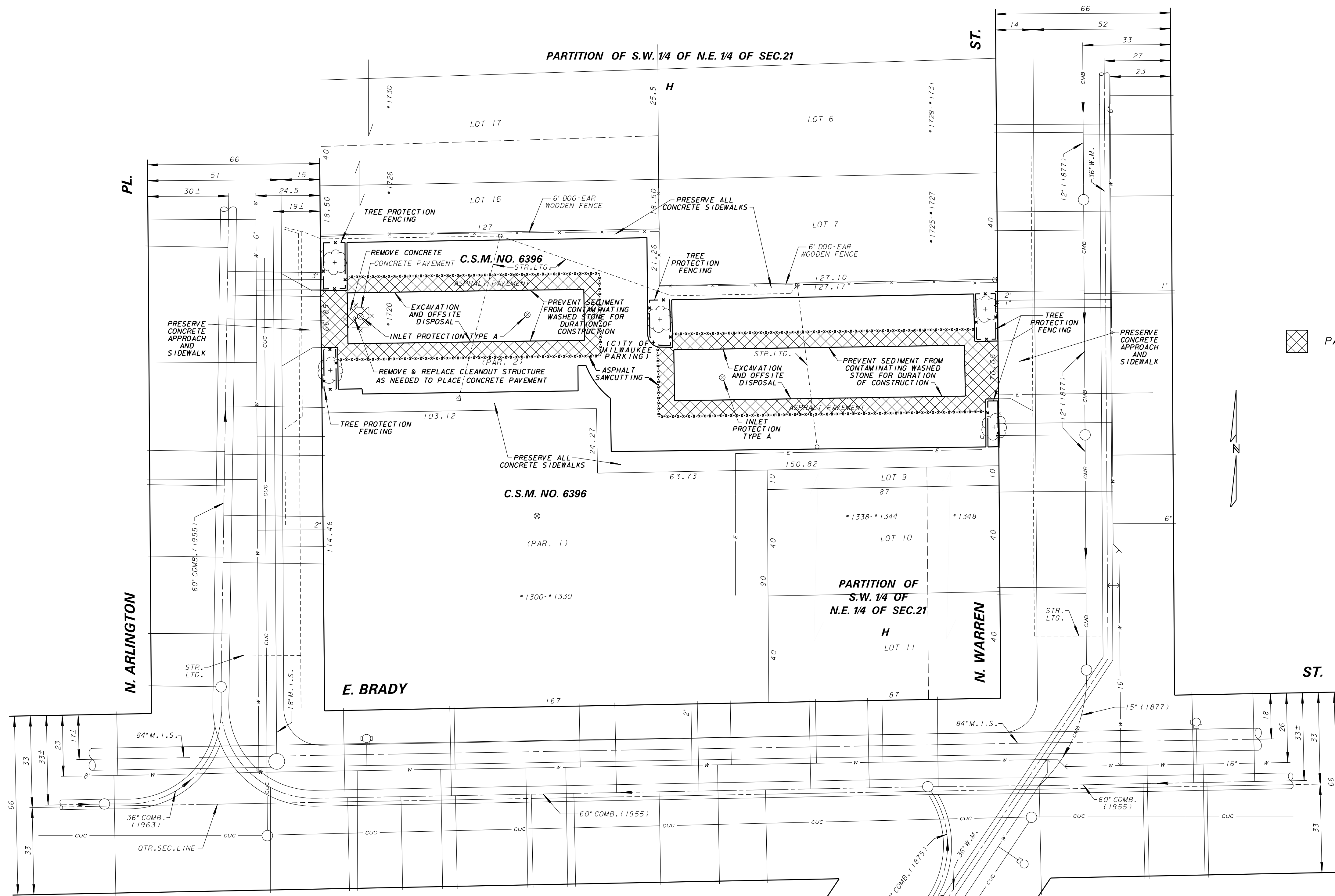


**SITE DATA:**  
 LOCATION: 1720 N. ARLINGTON PL.  
 OWNER: CITY OF MILWAUKEE  
 OWNER ADDRESS: 841 N. BROADWAY  
 OWNER CONTACT: KURT SPRANGERS 414-286-0515  
 ZONING: LB2  
 LOT AREA: 17,987 SF  
 EXISTING PAVEMENT AREA: 17,247 SF  
 EXISTING LANDSCAPED AREA: 740 SF  
 PROPOSED PAVEMENT AREA: 17,247 SF  
 (2,042 SF PERMEABLE)  
 PROPOSED LANDSCAPED AREA: 740 SF  
 PROPOSED PARKING STALLS: 50 (2 ACCESSIBLE)  
 TOTAL LAND DISTURBANCE: 3,819 SF



PAVEMENT REMOVAL



**FINAL CHECKPRINT 27-FEB-2020**

**ENVIRONMENTAL ENGINEERING SECTION  
 INFRASTRUCTURE SERVICES DIVISION  
 DEPARTMENT OF PUBLIC WORKS  
 MILWAUKEE, WISCONSIN**

**DEMOLITION & EROSION CONTROL PLAN**

**AT 1720 N. ARLINGTON PLACE**

**ESTIMATE OF QUANTITIES**

ITEM NO.	QUANTITY	DESCRIPTION
50015	LUMP SUM	EROSION CONTROL
50322	351 SQ. YDS.	FULL DEPTH PAVEMENT MILLING
50327	378 SQ. YDS.	PAVEMENT REMOVAL
66127	236 FT.	TREE PROTECTION FENCING
90059	488 FT.	ASPHALT SAWCUTTING
92005	493 CU. YDS.	EXCAVATION AND OFFSITE DISPOSAL

SCALE HORIZONTAL 1" = 20'	APPROVED _____ DATE _____
1/4 SEC. NO. 355	DESIGN ENGINEER
PLAN DATE	ENGINEER IN CHARGE
DESIGNED BY E. BEANE	
DRAWN BY M. DWYER/CMM	
CHECKED BY S. BEKELE	
SYSTEM NO. 3103	
EASEMENT NO.	CITY ENGINEER & SPECIAL DEPUTY COMMISSIONER OF PUBLIC WORKS
CONTRACT NO.	PROJECT NO.
PROJ. ID. SM499180110	OFF. NOTICE NO.
	C.C. FILE NO.
	DATE ADOPTED

**SHEET NO. 1 OF 5 PLAN FILE NO. 2020-047**



CALL DIGGERS HOTLINE  
 1-800-242-8511

TOLL FREE TO OBTAIN LOCATION OF UNDERGROUND UTILITIES BEFORE YOU DIG. WISCONSIN STATUTE 182.015 REQUIRES MIN. OF 3 WORK DAYS NOTICE BEFORE YOU EXCAVATE.

NO.	BY	REVISION	DATE

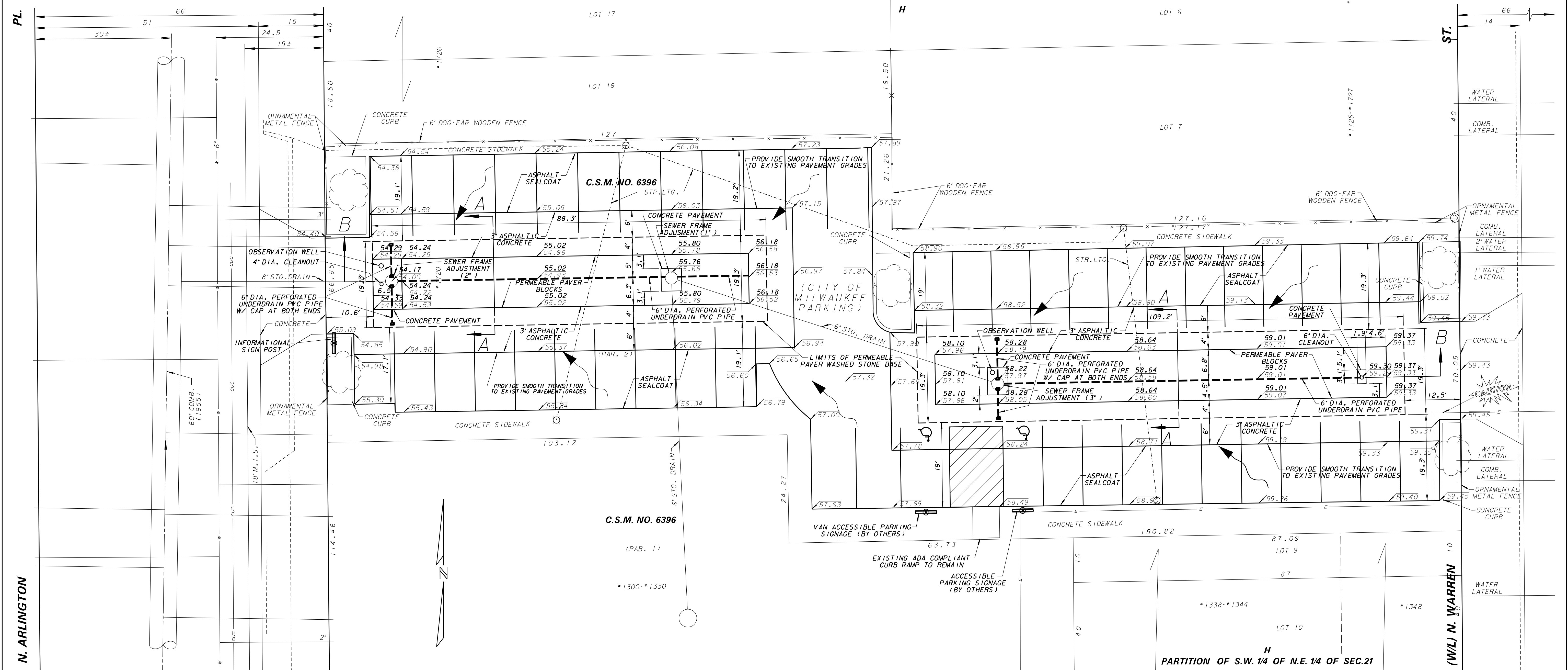
**SURVEY:**  
 BOOK NO. 827, PP. 171-175  
 BM\* SW BOLT ON ALP IN PARKING LOT ON SOUTH SIDE OF PARKING LOT AT STA 1+50 ELEV: 59.70  
 EAST SIDE OF CUT-OFF PIPE IN CONC PLATFORM ON WP ON E/S OF N. WARREN AVE. @ 1720 N ELEV: 60.18

**LINE CODE LEGEND**

GAS	SANITARY SEWER	PAVING LIMITS
ELECTRIC	STORM SEWER	STRUCTURE / BUILDING
TELEPHONE	COMBINED SEWER	FENCE
CABLE TELEVISION	SEW. DISTRICT SEWER	HYDRANT
FIBER OPTICS	WATER MAIN	ALUMINUM POLE
CITY UNDERGROUND CONDUIT	SEWER/WATER 24" & OVER	CONCRETE POLE
COMMUNICATIONS	STREET LIGHTING	WOOD POLE

**BE ADVISED THAT THIS INFORMATION HEREBY GIVEN TO YOU IS BASED UPON THE BEST AVAILABLE RECORDS. THE EXACT LOCATION IS UNKNOWN FOR ALL UTILITIES SHOWN WITHOUT DIMENSIONS. HOWEVER WE CANNOT GUARANTEE THE CORRECTNESS OR ACCURACY OF THE SAME.**

PARTITION OF S.W. 1/4 OF N.E. 1/4 OF SEC.21



NOTE: PROPOSED GRADES ARE SHOWN IN BOLD TEXT.

FINAL CHECKPRINT 26-FEB-2020

ESTIMATE OF QUANTITIES		
ITEM NO.	QUANTITY	DESCRIPTION
50001	LUMP SUM	BARRICADING
50307	560 SQ.YDS.	3" ASPHALTIC CONCRETE
50310	15 SQ.YDS.	CONCRETE PAVEMENT
50355	LUMP SUM	PERMANENT PAVEMENT MARKINGS
56107	3	SEWER FRAME ADJUSTMENT
56109	424 SQ.YDS.	GEOGRID
70061	179 FT.	6" DIA. PERFORATED UNDERDRAIN PVC PIPE
70063	1	4" DIA. CLEANOUT
70064	1	6" DIA. CLEANOUT
90061	292 GAL.	ASPHALT SEALCOAT
91147	232 SQ.YDS.	PERMEABLE PAVER BLOCKS
91148	2	POST INSTALLATION INFILTRATION TESTING
91152	22 TONS	3/4" DENSE GRADED CRUSHED STONE
91153	351 CU.YDS.	2-1/2" WASHED STONE
91154	500 SQ.YDS.	GEOTEXTILE FILTER FABRIC TYPE "DF"
91177	2	OBSERVATION WELL
92041	71 CU.YDS.	3/4" WASHED STONE
95015	1	INFORMATIONAL SIGN POST

**ENVIRONMENTAL ENGINEERING SECTION**  
**INFRASTRUCTURE SERVICES DIVISION**  
**DEPARTMENT OF PUBLIC WORKS**  
 MILWAUKEE, WISCONSIN

**PERMEABLE PAVER PLAN**

AT **1720 N. ARLINGTON PLACE**

SCALE: HORIZONTAL 1"=10'  
 VERTICAL 1"=12"

14 SEC. NO. 355

DESIGNED BY E.BEANE  
 DRAWN BY M.DWYER/CMM  
 CHECKED BY S.BEKELE

SYSTEM NO. 3103

CONTRACT NO. PROJECT NO. C.C. FILE NO.  
 PROD. ID. SM499180110 OFF. NOTICE NO. DATE ADOPTED

SHEET NO. 2 OF 5 PLAN FILE NO. 2020-048



CALL DIGGERS HOTLINE 1-800-242-8511

NO.	BY	REVISION	DATE

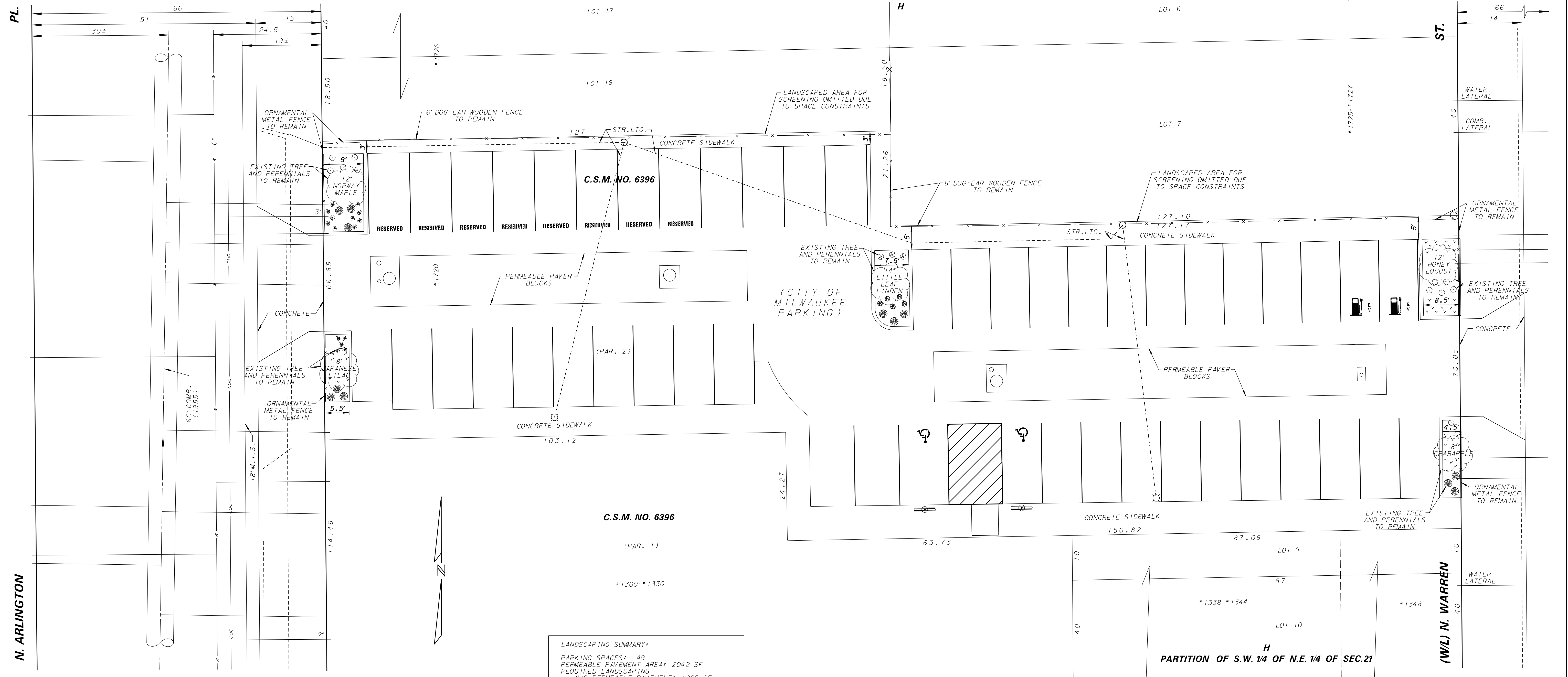
AS BUILT CONTRACT NO. DATE ENT'D. ENT'D. BY

**LINE CODE LEGEND**

GAS	..... G	SANITARY SEWER	..... SAN	STREET LIGHTING	..... X X X X
ELECTRIC	..... E	STORM SEWER	..... STO	PAVING LIMITS	..... X X X X
TELEPHONE	..... T	COMBINED SEWER	..... CMB	STRUCTURE / BUILDING	..... X X X X
CABLE TELEVISION	..... TV	SEW. DISTRICT SEWER	..... SMD	FENCE	..... X X X X
FIBER OPTICS	..... FO	WATER MAIN	..... W	HYDRANT	..... H
CITY UNDERGROUND CONDUIT	..... CUC	SEWERWATER 24" & OVER	..... S24	ALUMINUM POLE	..... A
				CONCRETE POLE	..... C
				WOOD POLE	..... W

BE ADVISED THAT THIS INFORMATION HEREBY GIVEN TO YOU IS BASED UPON THE BEST AVAILABLE RECORDS. THE EXACT LOCATION IS UNKNOWN FOR ALL UTILITIES SHOWN WITHOUT DIMENSIONS. HOWEVER WE CANNOT GUARANTEE THE CORRECTNESS OR ACCURACY OF THE SAME.

PARTITION OF S.W. 1/4 OF N.E. 1/4 OF SEC. 21



**LANDSCAPING SUMMARY:**

PARKING SPACES: 49  
 PERMEABLE PAVEMENT AREA: 2042 SF  
 REQUIRED LANDSCAPING  
 W/O PERMEABLE PAVEMENT: 1225 SF  
 12 TREES

REQUIRED LANDSCAPING  
 W/PERMEABLE PAVEMENT: 612.5 SF  
 6 TREES

PROPOSED LANDSCAPING: 740 SF  
 5 TREES  
 (3 TREES HAVE  
 CALIPER SIZE  
 12" OR GREATER)

NOTE: SHRUBS AND PERENNIALS ARE  
 MAINTAINED BY ADJACENT  
 PROPERTY OWNER AND REPLISHED  
 AS NEEDED.

FINAL CHECKPRINT 27-FEB-2020

**ENVIRONMENTAL ENGINEERING SECTION**  
 INFRASTRUCTURE SERVICES DIVISION  
 DEPARTMENT OF PUBLIC WORKS  
 MILWAUKEE, WISCONSIN

LANDSCAPING PLAN

AT **1720 N. ARLINGTON PLACE**

APPROVED \_\_\_\_\_  
CITY ENGINEER / DEPUTY COMMISSIONER OF PUBLIC WORKS

DESIGNED BY E. BEANE  
 DRAWN BY C. MASLOWSKI  
 CHECKED BY S. BEKELE

SHEET NO. 3 OF 5 PLAN FILE NO. 2020-049



**LINE CODE LEGEND**

GAS	SANITARY SEWER	STREET LIGHTING
ELECTRIC	STORM SEWER	PAVING LIMITS
TELEPHONE	COMBINED SEWER	STRUCTURE / BUILDING
CABLE TELEVISION	SEW. DISTRICT SEWER	FENCE
FIBER OPTICS	WATER MAIN	HYDRANT
CITY UNDERGROUND CONDUIT	SEWER/WATER 24" & OVER	ALUMINUM POLE ○ CONCRETE POLE ○ WOOD POLE ○

**BE ADVISED THAT THIS INFORMATION HEREBY GIVEN TO YOU IS BASED UPON THE BEST AVAILABLE RECORDS. THE EXACT LOCATION IS UNKNOWN FOR ALL UTILITIES SHOWN WITHOUT DIMENSIONS. HOWEVER WE CANNOT GUARANTEE THE CORRECTNESS OR ACCURACY OF THE SAME.**

CALL DIGGERS HOTLINE  
 1-800-242-8511

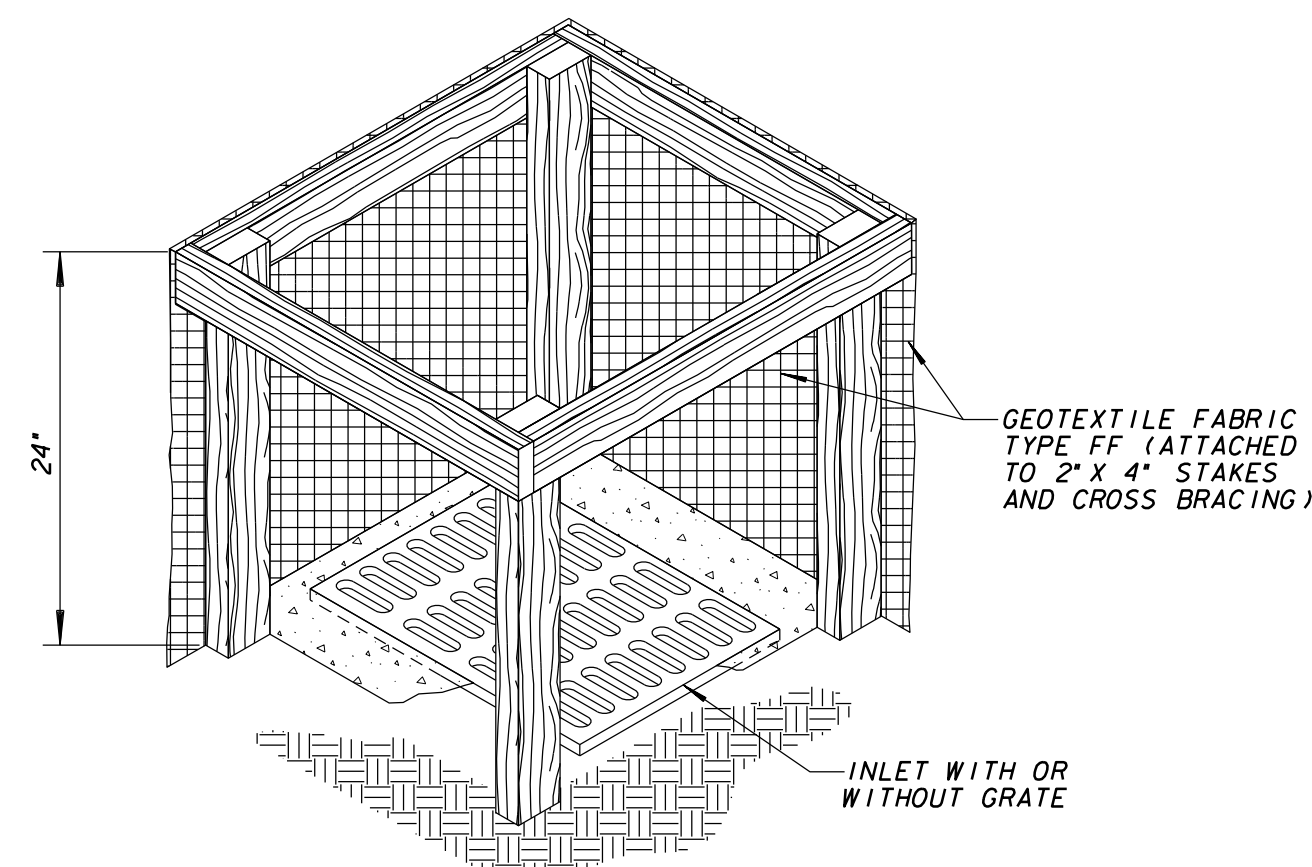
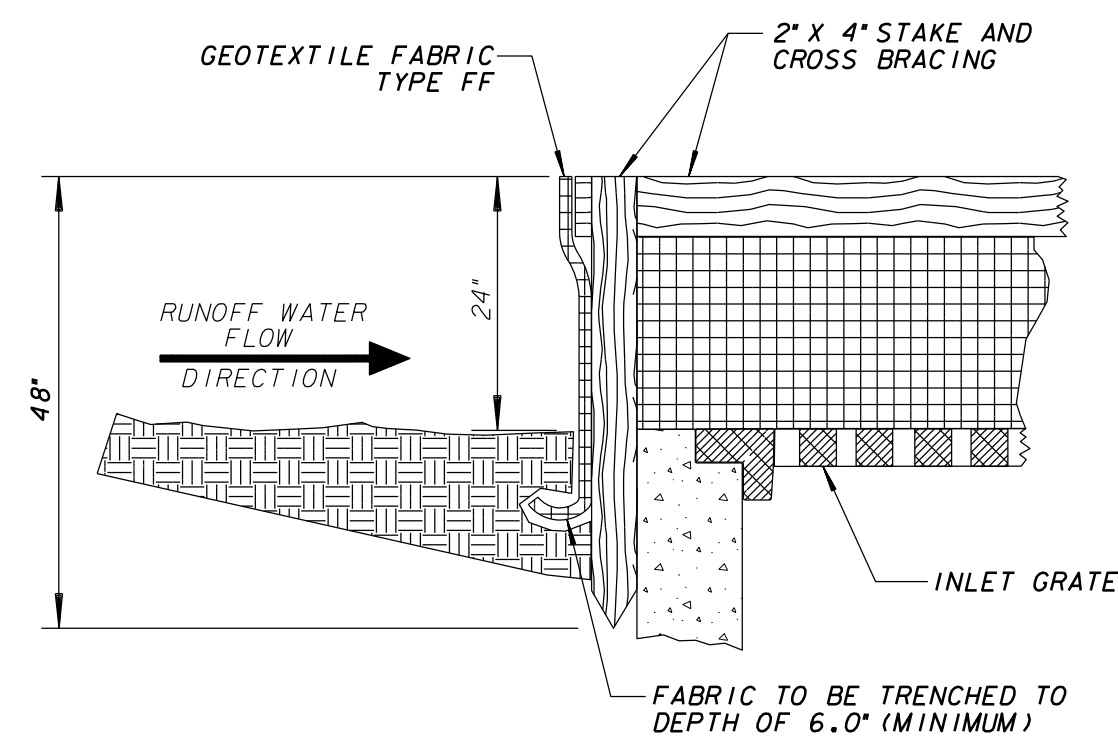
TOLL FREE TO OBTAIN LOCATION OF UNDERGROUND  
 BEFORE YOU DIG. WISCONSIN STATUTE 102.01(15) REQUIRES  
 MIN. OF 3 WORK DAYS NOTICE BEFORE YOU EXCAVATE

NO.	BY	REVISION	DATE

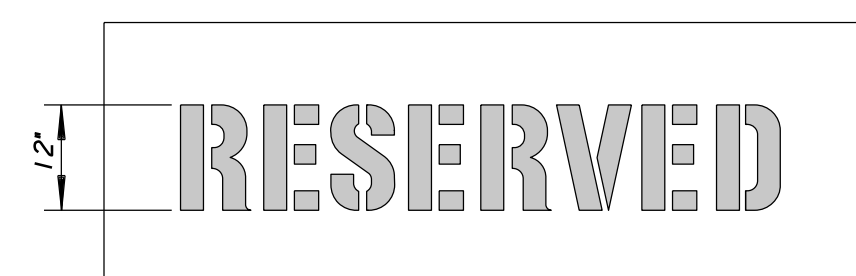
AS BUILT CONTRACT NO. \_\_\_\_\_ DATE ENT'D. \_\_\_\_\_  
 ENT'D. BY \_\_\_\_\_

**ESTIMATE OF QUANTITIES**

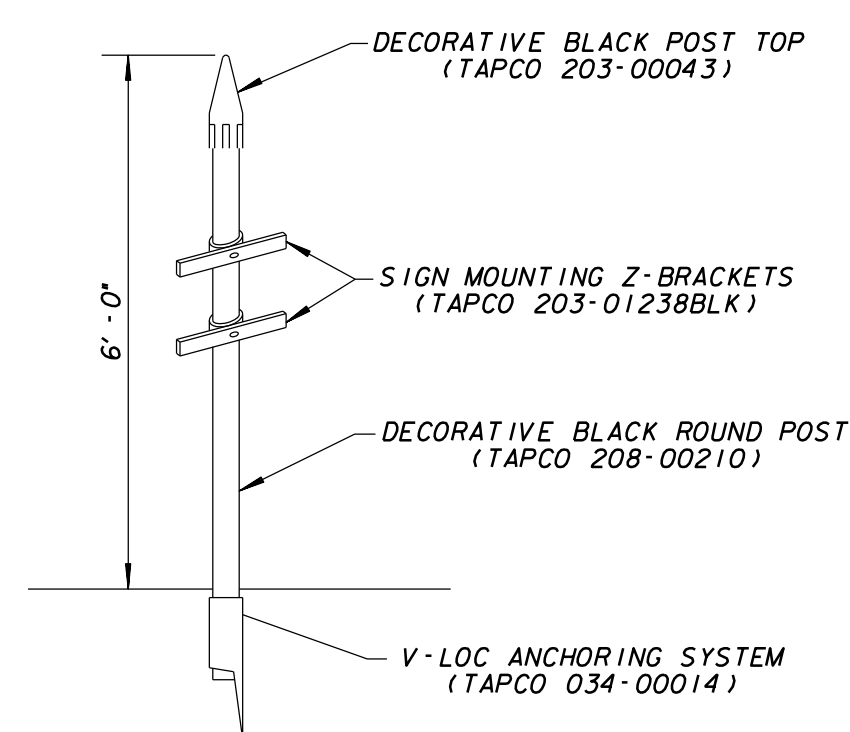
ITEM NO.	QUANTITY	DESCRIPTION



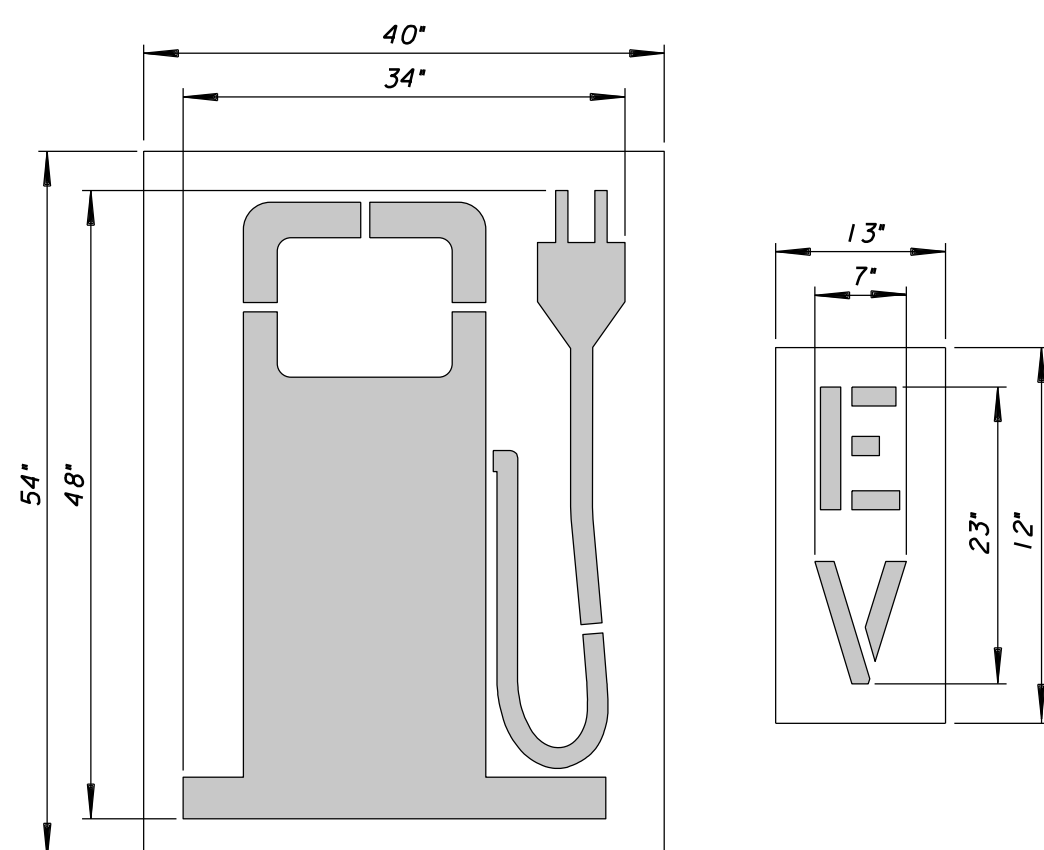
**INLET PROTECTION TYPE A**  
SCALE - N.T.S.



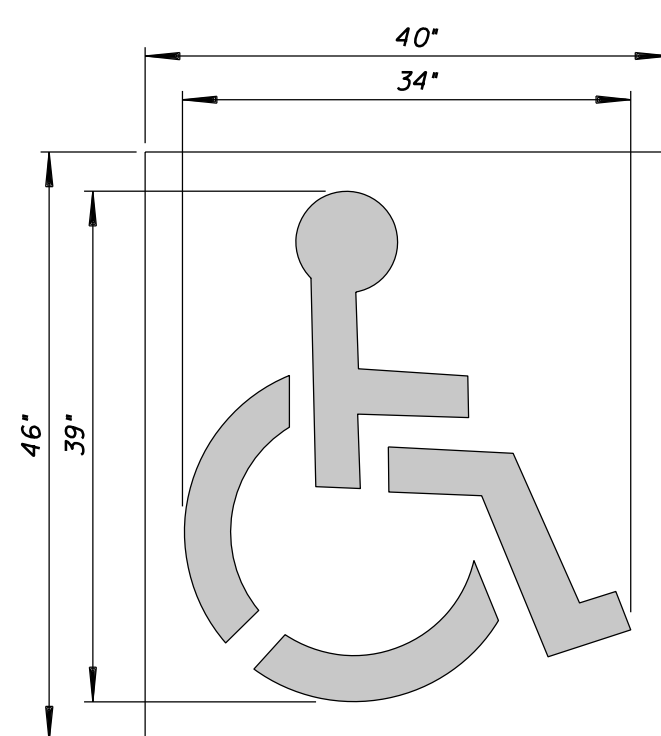
**DETAIL OF RESERVED STENCIL**  
SCALE - N.T.S.



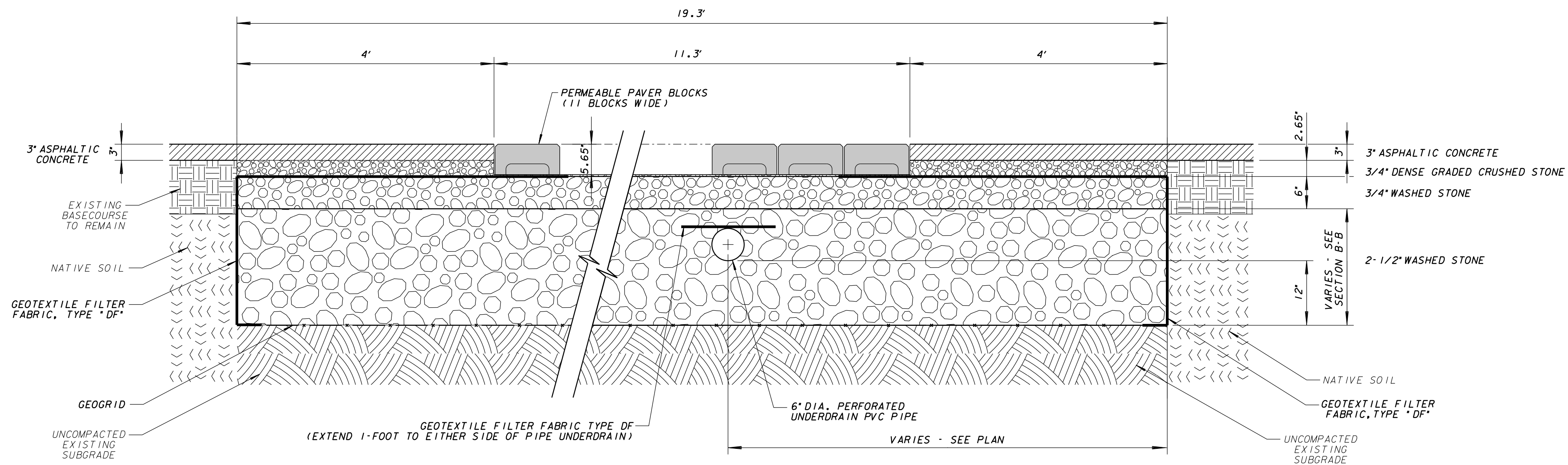
**DETAIL OF INFORMATIONAL SIGN POST**  
SCALE - N.T.S.



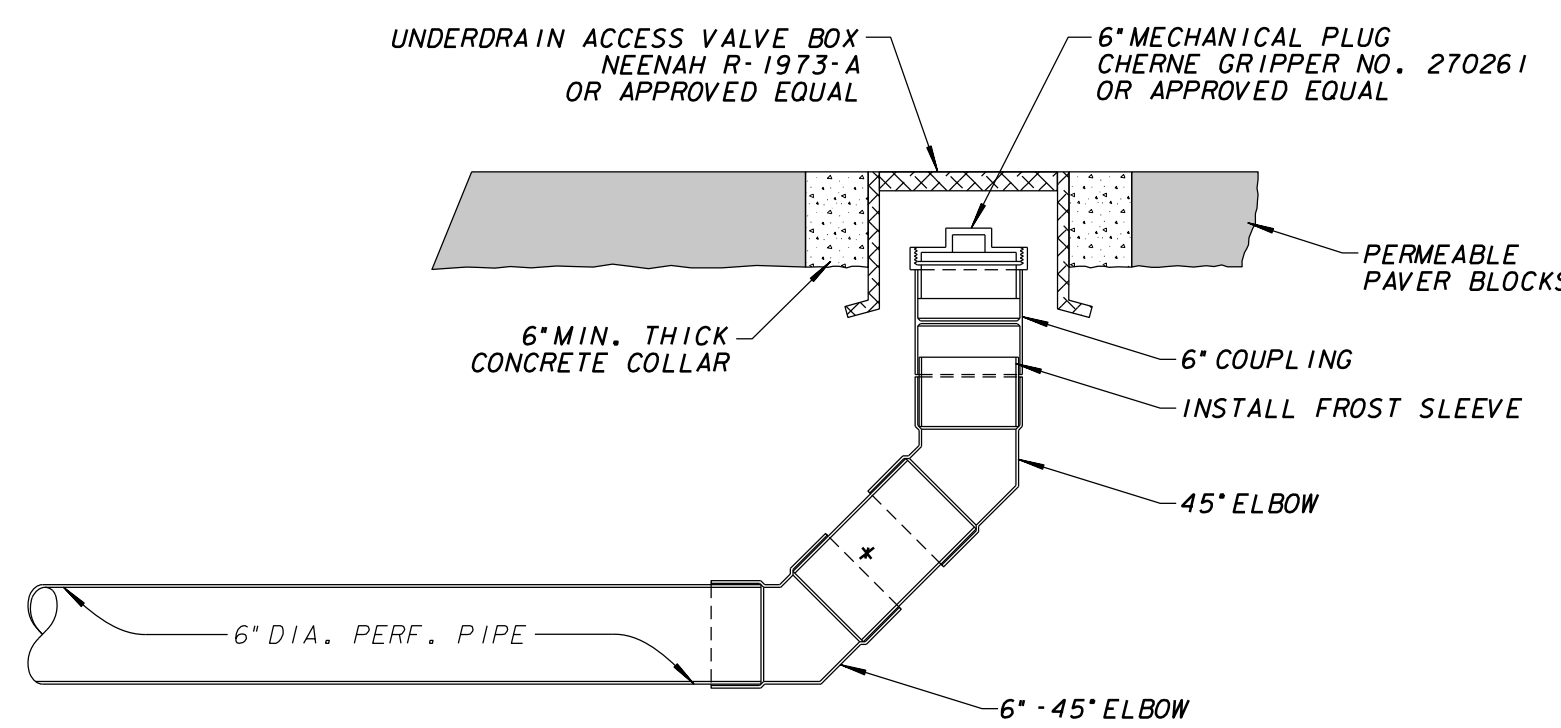
**DETAIL OF 48" ELECTRIC VEHICLE LOGO STENCIL**  
SCALE - N.T.S.



**DETAIL OF 39" HANDICAP STENCIL**  
SCALE - N.T.S.

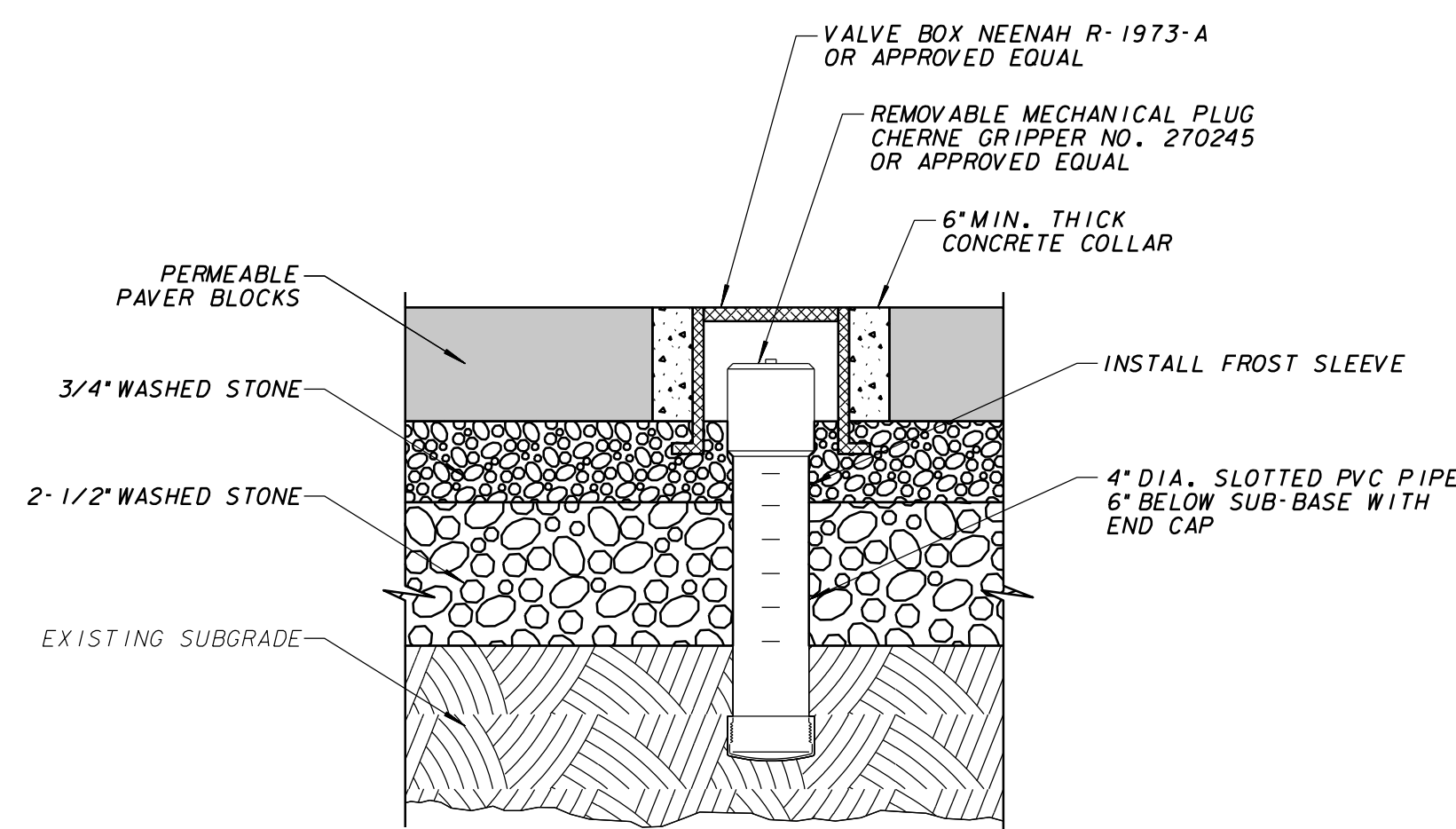


**SECTION A-A**  
SCALE - N.T.S.



NOTES: ALL PIPE AND FITTINGS TO MEET ASTM F758-82 SPECIFICATIONS.  
\* COUPLING PIPE LENGTH TO BE FIELD ADJUSTED.

**UNDERDRAIN CLEANOUT**  
SCALE - N.T.S.



**OBSERVATION WELL**  
SCALE - N.T.S.

**NOTES:**

1. INLET PROTECTION DEVICES SHALL BE MAINTAINED OR REPLACED AT THE DIRECTION OF THE ENGINEER.
2. MANUFACTURED ALTERNATIVES APPROVED AND LISTED ON THE DEPARTMENT'S EROSION CONTROL PRODUCT ACCEPTABILITY LIST MAY BE SUBSTITUTED.
3. WHEN REMOVING OR MAINTAINING INLET PROTECTION, CARE SHALL BE TAKEN SO THAT THE SEDIMENT TRAPPED ON THE GEOTEXTILE FABRIC DOES NOT FALL INTO THE INLET. ANY MATERIAL FALLING INTO THE INLET SHALL BE REMOVED IMMEDIATELY.
4. FINISHED SIZE, INCLUDING FLAP POCKETS WHERE REQUIRED, SHALL EXTEND A MINIMUM OF 10' AROUND THE PERIMETER TO FACILITATE MAINTENANCE OR REMOVAL.
5. FOR INLET PROTECTION, TYPE C (WITH CURB BOX), AN ADDITIONAL 18" OF FABRIC IS WRAPPED AROUND THE WOOD AND SECURED WITH STAPLES. THE WOOD SHALL NOT BLOCK THE ENTIRE HEIGHT OF THE CURB BOX OPENING.
6. FLAP POCKETS SHALL BE LARGE ENOUGH TO ACCEPT WOOD 2X4.

**CALL DIGGERS HOTLINE**  
1-800-242-8511  
TOLL FREE TO OBTAIN LOCATION OF UNDERGROUND BEFORE YOU DIG. WISCONSIN STATUTE 182.015 REQUIRES MIN. OF 3 WORK DAYS NOTICE BEFORE YOU EXCAVATE

NO.	BY	REVISION	DATE

AS BUILT CONTRACT NO. DATE ENT'D. ENT'D. BY



**FINAL CHECKPRINT 27-FEB-2020**

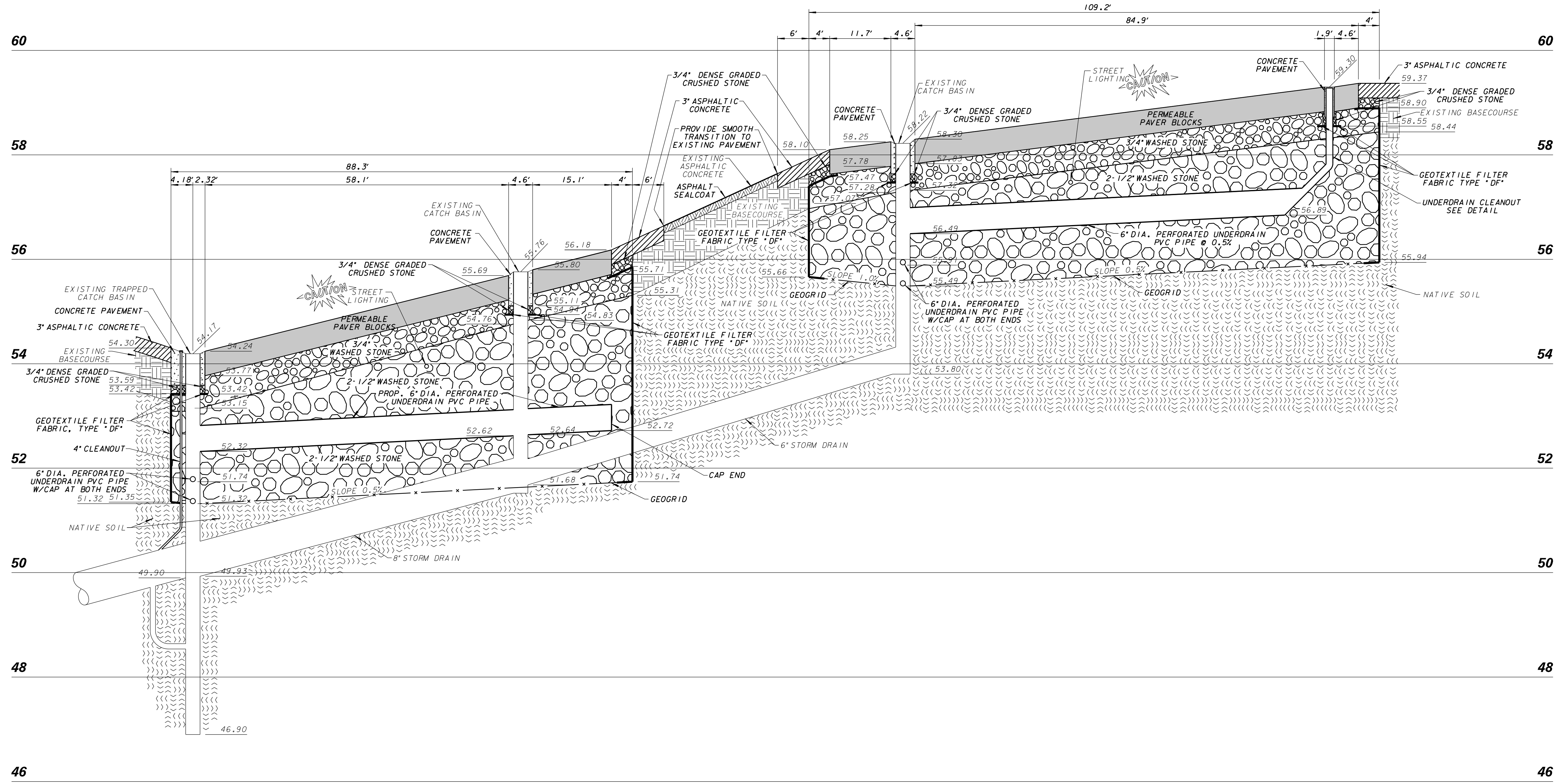
**ENVIRONMENTAL ENGINEERING SECTION**  
INFRASTRUCTURE SERVICES DIVISION  
DEPARTMENT OF PUBLIC WORKS  
MILWAUKEE, WISCONSIN

**PERMEABLE PAVER DETAIL PLAN**

AT **1720 N. ARLINGTON PLACE**

SCALE: NTS	APPROVED
1/4 SEC. NO.: 355	DESIGN ENGINEER
PLAN DATE	
DESIGNED BY: E. BEANE	ENGINEER IN CHARGE
DRAWN BY: C. MASLOWSKI	
CHECKED BY: S. BEKELE	
SYSTEM NO.: 3103	
EASEMENT NO.	CITY ENGINEER, DEPUTY COMMISSIONER OF PUBLIC WORKS
CONTRACT NO.	PROJECT NO.
PROJ. ID: SM499180110	OFF. NOTICE NO.
	DATE ADOPTED
<b>SHEET NO. 4 OF 5 PLAN FILE NO. 2020-050</b>	

# SECTION B-B



**FINAL CHECKPRINT 27-FEB-2020**

**ENVIRONMENTAL ENGINEERING SECTION  
INFRASTRUCTURE SERVICES DIVISION  
DEPARTMENT OF PUBLIC WORKS  
MILWAUKEE, WISCONSIN**

**PERMEABLE PAVER PROFILE**

AT **1720 N. ARLINGTON PLACE**

<p>SCALE: HORIZONTAL 1"=10', VERTICAL 1"=1NTS</p> <p>1/4 SEC. NO. 355</p> <p>PLAN DATE</p> <p>DESIGNED BY E.BEANE</p> <p>DRAWN BY M.DWYER/CMM</p> <p>CHECKED BY S.BEKELE</p> <p>SYSTEM NO. 3103</p> <p>EASEMENT NO.</p> <p>CONTRACT NO.</p> <p>PROJ. ID. SM499180110</p>	<p>APPROVED</p> <p>DESIGN ENGINEER</p> <p>ENGINEER IN CHARGE</p> <p>CITY ENGINEER / ASSISTANT DEPUTY COMMISSIONER OF PUBLIC WORKS</p> <p>C.C. FILE NO.</p> <p>OFF. NOTICE NO.</p> <p>DATE ADOPTED</p>
<p><b>SHEET NO. 5 OF 5 PLAN FILE NO. 2020-051</b></p>	



**CALL DIGGERS HOTLINE 1-800-242-8511**

NO.	BY	REVISION	DATE

**LINE CODE LEGEND**

<p>GAS ..... G</p> <p>ELECTRIC ..... E</p> <p>TELEPHONE ..... T</p> <p>CABLE TELEVISION ..... TV</p> <p>FIBER OPTICS ..... FO</p> <p>CITY UNDERGROUND CONDUIT ..... CUC</p>	<p>SANITARY SEWER ..... SAN</p> <p>STORM SEWER ..... STO</p> <p>COMBINED SEWER ..... CMB</p> <p>SEW. DISTRICT SEWER ..... MMSD</p> <p>WATER MAIN ..... W</p> <p>SEWERWATER 24" &amp; OVER</p>	<p>STREET LIGHTING ..... X X X X</p> <p>PAVING LIMITS ..... X X X X</p> <p>STRUCTURE / BUILDING ..... X X X X</p> <p>FENCE ..... X X X X</p> <p>HYDRANT ..... H</p> <p>ALUMINUM POLE ○ CONCRETE POLE ○ WOOD POLE ○</p>
---	---	--

**BE ADVISED THAT THIS INFORMATION HEREBY GIVEN TO YOU IS BASED UPON THE BEST AVAILABLE RECORDS. THE EXACT LOCATION IS UNKNOWN FOR ALL UTILITIES SHOWN WITHOUT DIMENSIONS. HOWEVER WE CANNOT GUARANTEE THE CORRECTNESS OR ACCURACY OF THE SAME.**