

457

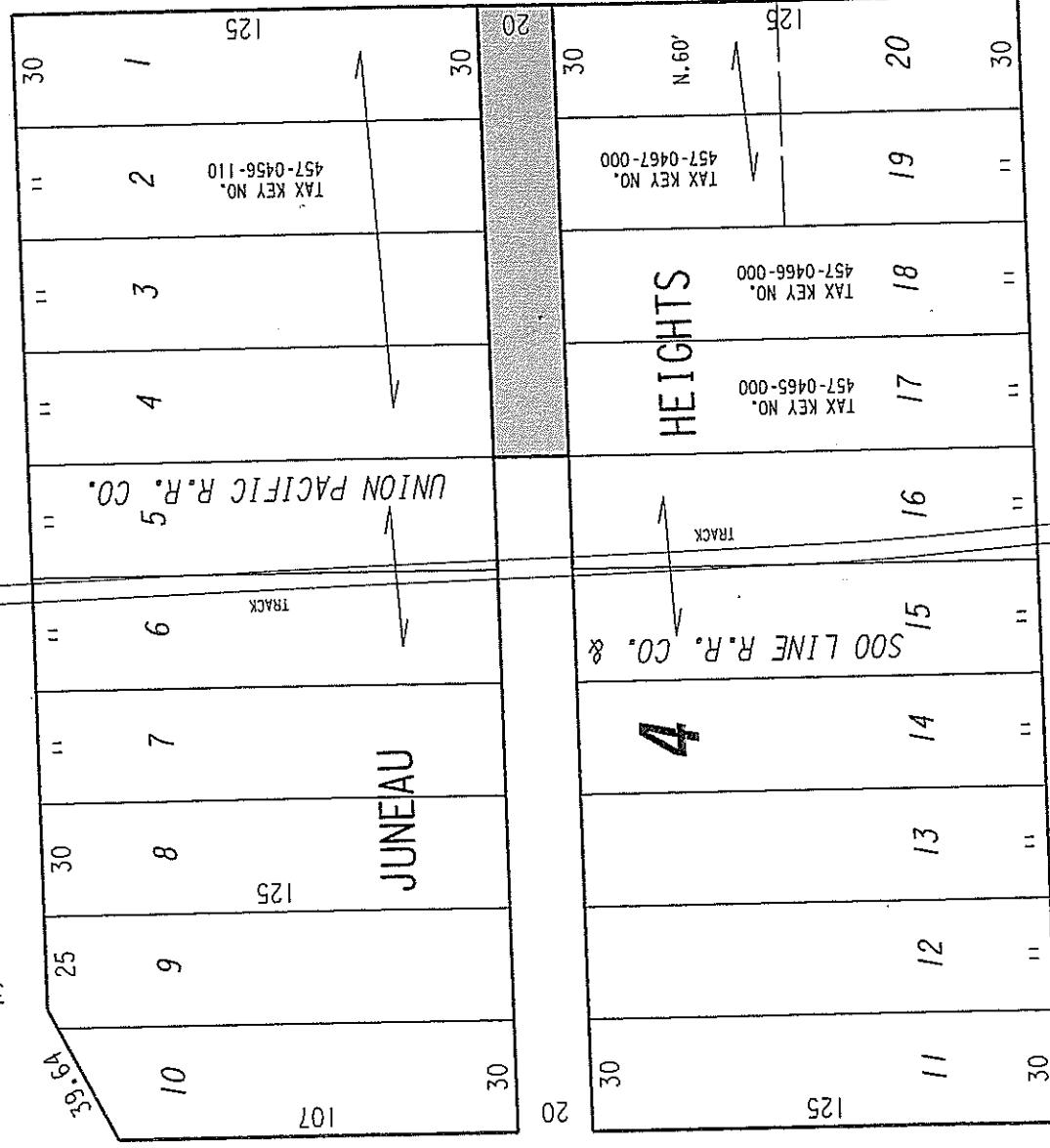
N.W. 1/4 SEC. 1, T.6N., R.2E.

(R.O.W. VARIES)

VILLAGE OF WEST MILWAUKEE LIMITS

W. Greenfield Ave. SEC. LINE

CITY OF MILWAUKEE LIMITS



S. 42nd St.

Way St.

(R.O.W. VARIES)

SEC. LINE

S. 43rd St.

Miller Park

W. Orchard St. (60' R.O.W.)

PORTION OF PUBLIC ALLEY PROPOSED TO BE VACATED

EXHIBIT "A" FILE NO. 090917

INFRASTRUCTURE SERVICES DIVISION

MILWAUKEE, WISCONSIN
ASSIGNED TO: W.E. FUCHS
DRAWN BY: W.E.F.
PROJECT/GRANT NO.: WK52337289
APPROVED BY:

CH'K'D. BY: W.E. FUCHS
DATE: MARCH 30, 2010
SCALE: 1" = 50'

Marcia Cornell
CENTRAL DRAFTING & RECORDS MANAGER
CIVIL ENGINEER