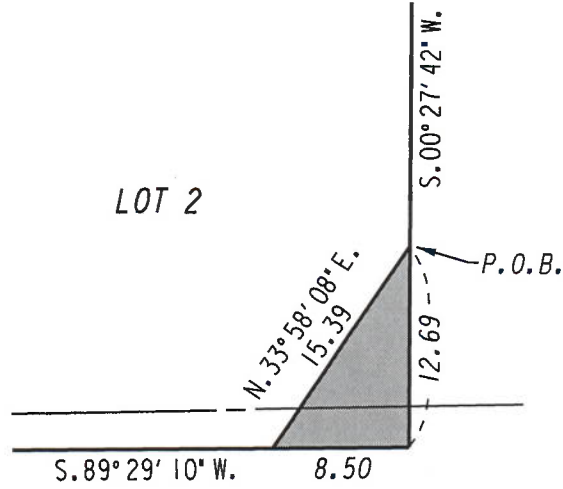


S. E. 1/4 SEC. 20, T.7N., R.22E.

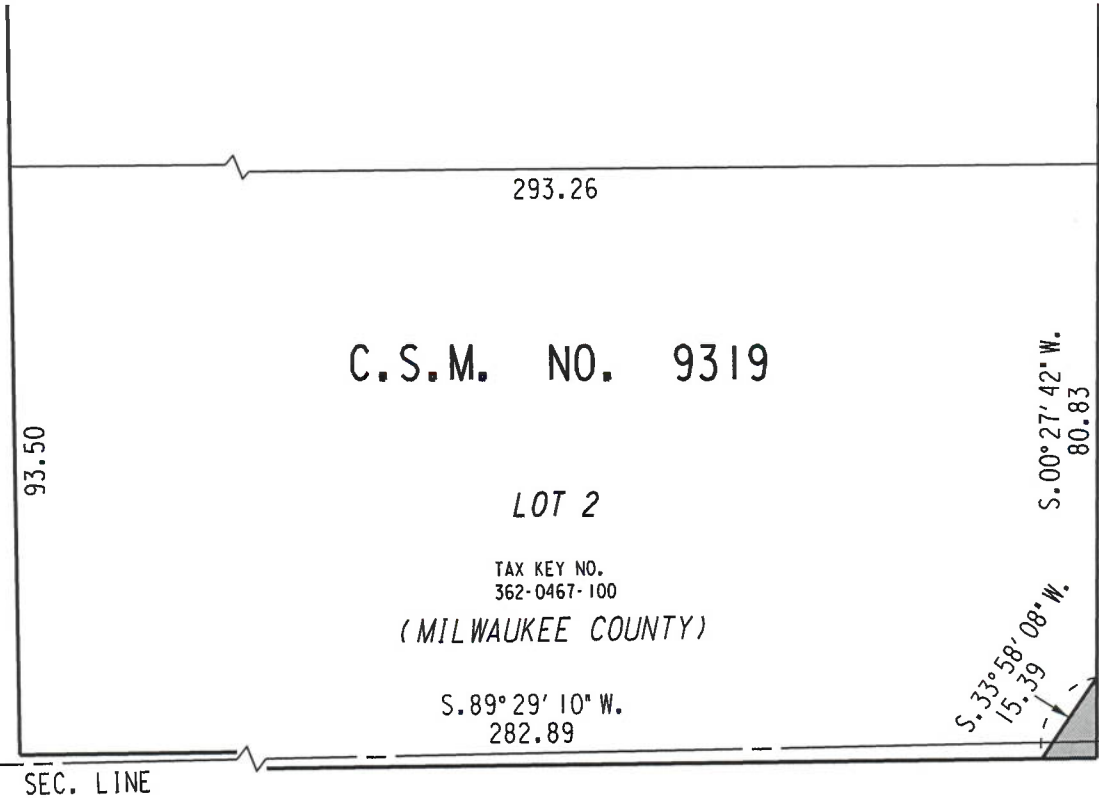
361



LOT 2

DETAIL  
N.T.S.

**N. 5th St.**  
(70' R.O.W.)



(R.O.W. VARIES)

**N. Vel R. Phillips Ave.**

(80' R.O.W.)

**W. Juneau Ave.**

N. E. 1/4 SEC. 29, T.7N., R.22E.

392



PORTION OF PUBLIC  
STREET PROPOSED  
TO BE VACATED

**EXHIBIT "A"**  
**FILE NO. 201558**

**INFRASTRUCTURE SERVICES DIVISION**  
MILWAUKEE, WISCONSIN

ASSIGNED TO: W. FUCHS

CH'K'D. BY: W. FUCHS

DRAWN BY: W.F.

DATE: MAY 27, 2021

PROJECT/GRANT NO.: WK52337435

SCALE: 1" = 30'

APPROVED BY:

CENTRAL DRAFTING & RECORDS MANAGER

CITY ENGINEER