



LIVING WITH HISTORY

Certificate of Appropriateness

Milwaukee Historic Preservation Commission/200 E. Wells Street/Milwaukee, WI 53202/phone 414-286-5712/fax 414-286-3004

Property 2625 N. WEIL ST. St. Casimir Church Complex, Meta House

Description of work Two new light poles will be installed in the parking lot. They will be metal poles with concrete bases. One will have 3 LED lights. One will have 4 LED lights. In addition, one current 1300W light fixture on the north wall of the building will be replaced with a new LED fixture. Care was taken to make sure no lights spill onto adjacent neighboring properties.

Date issued 5/16/2016 PTS ID 110845 COA Parking Lot Lighting

In accordance with the provisions of Section 320-21 (11) and (12) of the Milwaukee Code of Ordinances, the Milwaukee Historic Preservation Commission has issued a certificate of appropriateness for the work listed above. The work was found to be consistent with preservation guidelines. The following conditions apply to this certificate of appropriateness:

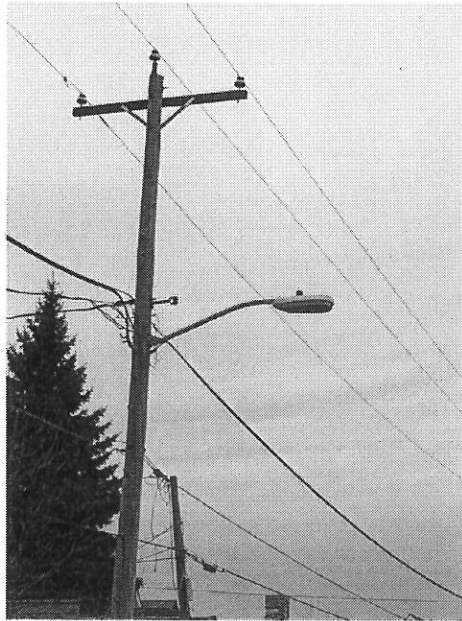
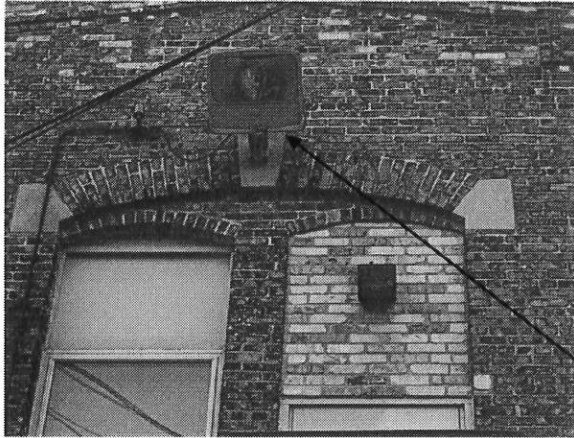
All work to be carried out per submittal.

All work must be done in a craftsman-like manner, and must be completed within one year of the date this certificate was issued. Staff must approve any changes or additions to this certificate before work begins. Work that is not completed in accordance with this certificate may be subject to correction orders or citations. If you require technical assistance, please contact Carlen Hatala of the Historic Preservation staff as follows: Phone: (414) 286-5722 Fax: (414) 286-3004 E-mail: carlen.hatala@milwaukee.gov.

If permits are required, you are responsible for obtaining them from the Milwaukee Development Center. If you have questions about permit requirements, please consult the Development Center's web site, www.milwaukee.gov/build, or call (414) 286-8210.

City of Milwaukee Historic Preservation Staff

Copies to: Development Center, Ald. Nik Kovac, Contractor , Inspector Paul Wolfgramm (286-2590)



2625 N. Weil St.
Current existing
fixtures.



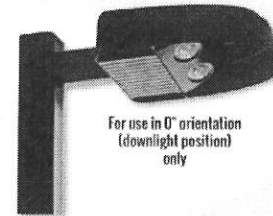


FLOOD & AREA

E-Series

LED Area Light

Average Customer Rating



For use in 0° orientation
(downlight position)
only

A one-for-one replacement for 250W PSMH.

Efficient

- Up to 53% energy savings over comparable HID fixtures
- Heat dissipating fins keep LEDs running cooler, longer

Durable

- Sturdy, low-copper die-cast aluminum construction
- Rugged tempered glass lens

Recommended Use

- General area lighting
- Parking lots
- Roadways

Input Voltage

- Universal (120V through 277V)

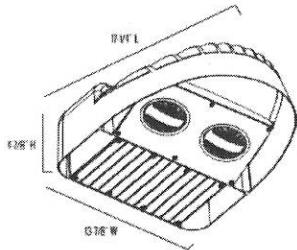
Certifications



e-conolight[®] Making LED easy.

1011 987 Street, Basking Ridge, NJ 07017 | Phone: 973-340-9999 | Fax: 973-340-9999 | www.e-conolight.com

E-Series



Series Overview

| DIMENSIONS | PRODUCT WEIGHT | MOUNTING HEIGHT | SPACING |
|-------------------------------|----------------|-----------------|----------------------------------|
| 13.41" L x 13.31" W x 4.73" H | 16.0 lbs | 15 to 25 feet | 3 to 5 times the mounting height |

Fixture Specifications

| | |
|----------------------|---|
| HOUSING | Low copper, die-cast aluminum housing Dark bronze polyester powder-coat finish |
| LENS ASSEMBLY | Fixed quartz glass shield reduces light pollution Tempered glass lens is thermal shock and impact resistant Recessed lens design delivers IES Type III distribution |
| MOUNTING | Fixture comes without mounting (sold separately) For use in 0° orientation (downlight position only) |

Electrical Performance

| OPERATING MINIMUM | LIFESPAN (AVERAGE) | POWER FACTOR | TOTAL HARMONIC DISTORTION | DIMMABLE |
|-------------------------------|----------------------------|--------------|---------------------------|----------|
| 40°C (40°F) | Estimated 100,000 Hours | > 0.9 | < 20% | No |
| INPUT VOLTAGE | 120V | 208V | 240V | 277V |
| Current Draw (Amperes) | 1.25A | 0.77A | 0.62A | 0.54A |

Warranty & Certifications

| WARRANTY | UL LISTED | DLC | ENERGY STAR |
|----------------|------------------------------|-----|-------------|
| 5-Year Limited | Wet Locations (0° tilt only) | Yes | — |

Output Specifications

| SKU | LIGHT OUTPUT (lm) | COLOR TEMP (mK) | POWER CONSUMPTION (W) | COLOR ACCURACY (CRI) | REPLACES |
|------------|-------------------|-----------------------|-----------------------|----------------------|------------|
| E-AL1L15CZ | 12,700 Lumens | Cool White (2000K) | 150W | 1 TO CRI | 250W P50MH |
| E-AL1L15NZ | 12,800 Lumens | Neutral White (4000K) | 150W | 1 TO CRI | 250W P50MH |

Due to continuous product improvement, information in this document is subject to change.
Revision Date: 04/05/18

1501 96th Street, Shoreview, WI 53177 | Phone (888) 243-9445 | Fax (202) 504-5409 | www.e-conolight.com



E-AL1L Series

Accessories



Photocell - Outdoor
SKU: E-ACP1 (120V)
E-ACP2 (208V, 240V, 277V)
USE: Photocell (M) installed
For use with 2" adjustable slip trim only.

Mounting Options (Use only when mounting E-AL1L & E-AL3L Series Area Lights)



6" Mounting Arm
SKU: E-ACE
USE: For pole mounting

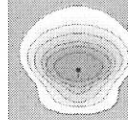


2" Slip Filter
SKU: E-ACS
USE: For pole mounting
Fit over 1.5" O.D. pipe



Adjustable U-Bracket
SKU: E-ACU
USE: For wall mounting
Not for use with E-AL3L

Photometric Diagrams



E-AL1L15CZ fixture (150W)
4.50 Beam width (5°)

Photometric diagrams are based on a 150W LED fixture with a 150W equivalent incandescent fixture. Fixture photometry may vary due to a single representative fixture.

Due to continuous product improvement, information in this document is subject to change.
Revision Date: 04/05/18

1501 96th Street, Shoreview, WI 53177 | Phone (888) 243-9445 | Fax (202) 504-5409 | www.e-conolight.com

