

NE & NW 17-7-22  
ATLAS PAGE 3:2 L 313

PREFIX 312  
W. CHAMBERS

PREFIX 313  
ST.

5-18-90  
312-02



JOYS'S J. SAM RINDSKOPF'S & CHAS HARPKE'S SUBD.

ST. 2978  
2976  
2972  
2970  
2968  
2966  
2964  
2962  
2960  
2958  
2956  
2954  
2952  
2950  
2948  
2946  
2944  
2942  
2940  
2938  
2936  
2934  
2932  
2930  
2928  
2926  
2924  
2922  
2920  
2918  
2916  
2914  
2912  
2910  
2908  
2906  
2904  
2902  
2900

176	312-1701	1	30
	-1702	2	29
	-1703	3	28
		4	27
	312-1704-100-X	5	26
		6	25
	312-1706-100-0	7	24
	-1707	8	23
	-1708	9	22
	-1709	10	21
	-1710-100	11	20
		12	19
	-1713	13	18
	-1714	14	17
	-1715-100-X	15	16
		16	15
	-1717	17	14
	-1720	18	13
	-1721	19	12
	312-1722	20	11
		21	10

4	1	313-2124	2901
3	2	313-2125	2902
2	3	313-2126	2903
1	4	313-2127	2904
5	5	313-2023	2905
6	6	-2024	2906
7	7	-2025	2907
9	8	-2026	2908
9	9	-2027	2909
10	10	313-2028	2910
12	11	313-0118	2911
13	12	-0119	2912
14	13	-0120	2913
15	14	-0121	2914
16	15	-0122	2915
17	16	-0123	2916
18	17	313-0124	2917

ST. SUBD. OF LOT 'M' SUBD. OF LOT 'N' N. 5<sup>TH</sup> ASSESSMENT SUBD NO. 28

W. LOCUST

ST.







SE & SW 8-7-22  
ATLAS P. 282 & P. 283

283-03

# PEIRCE AND DAVIS' ADDITION

← PREFIX 283      PREFIX 282 →

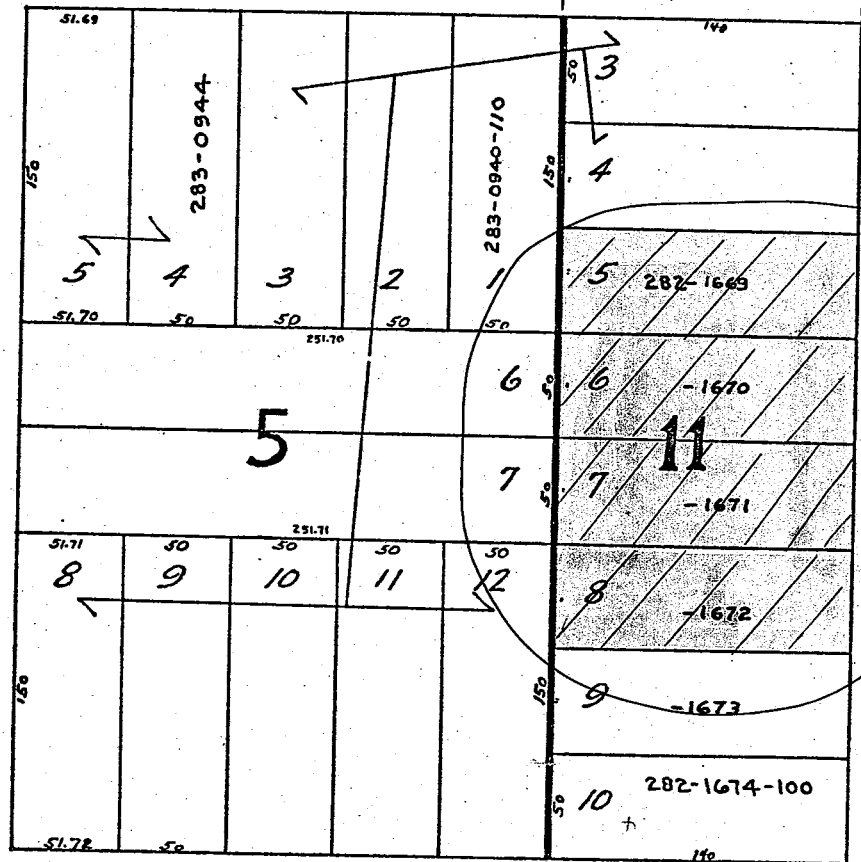


W. CONCORDIA AVE.  
535

515. (4-40)

N. 6TH ST.

N. 5TH ST.



W. RING ST.

MICROFILMED 6-19-80

SW 08-7-22

283

283-05

ATLAS P. 283

SCALE 1" = 100'

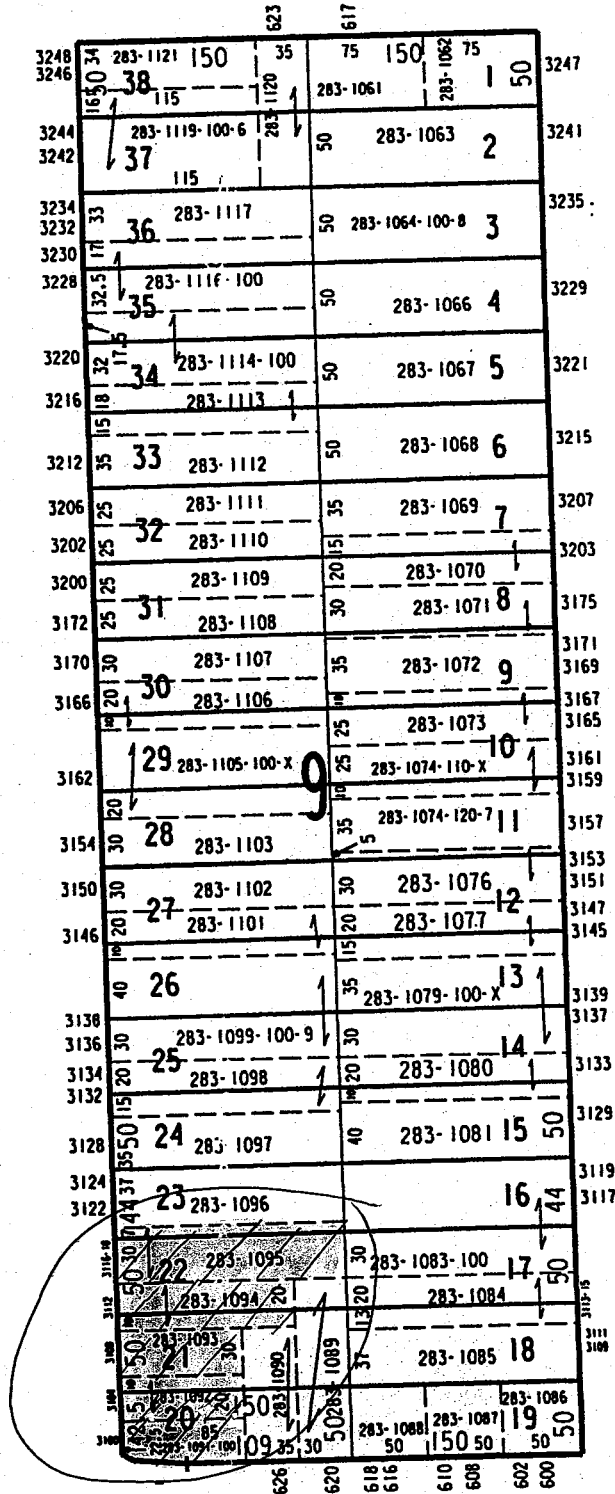
PEIRCE & DAVIS' ADD'N.

W RING ST

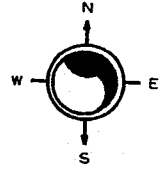


N 7TH ST

N 6TH ST

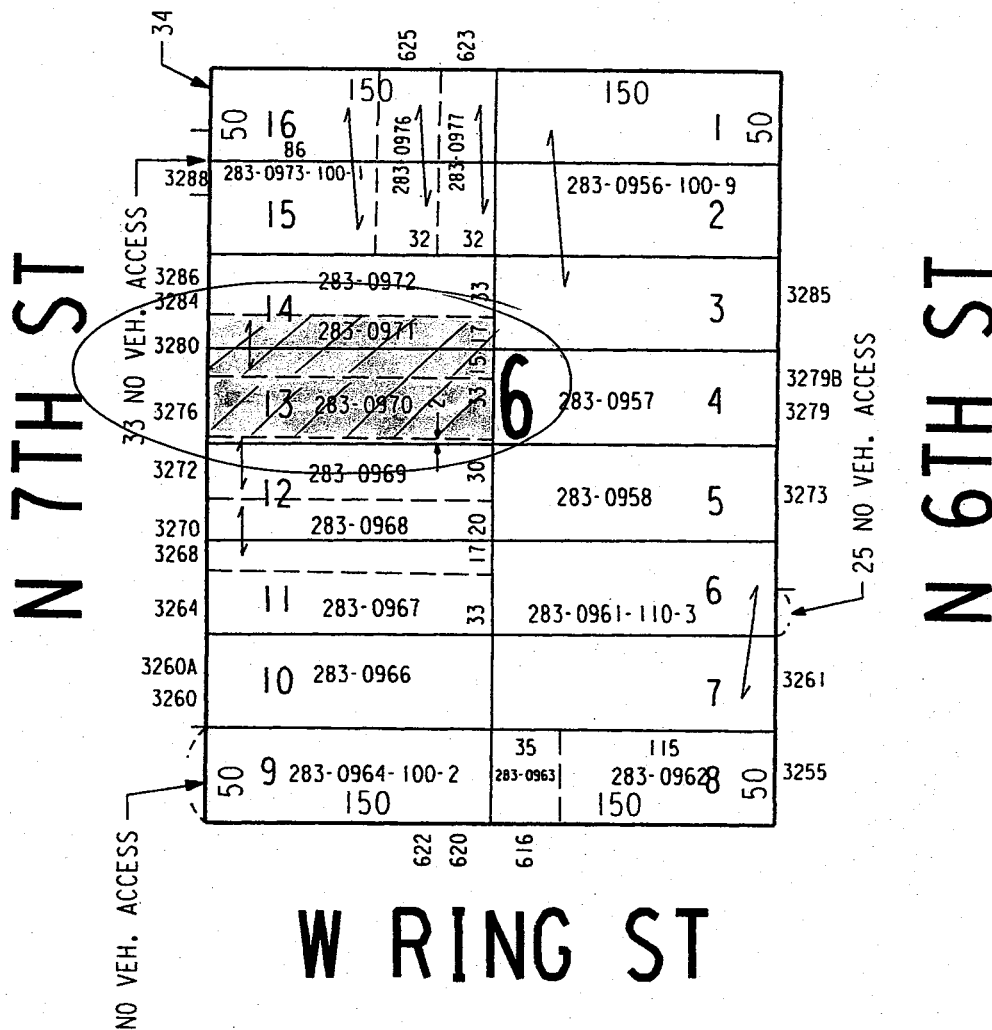


W BURLEIGH ST



PEIRCE & DAVIS' ADDITION

W CONCORDIA AV



SW 08-7-22

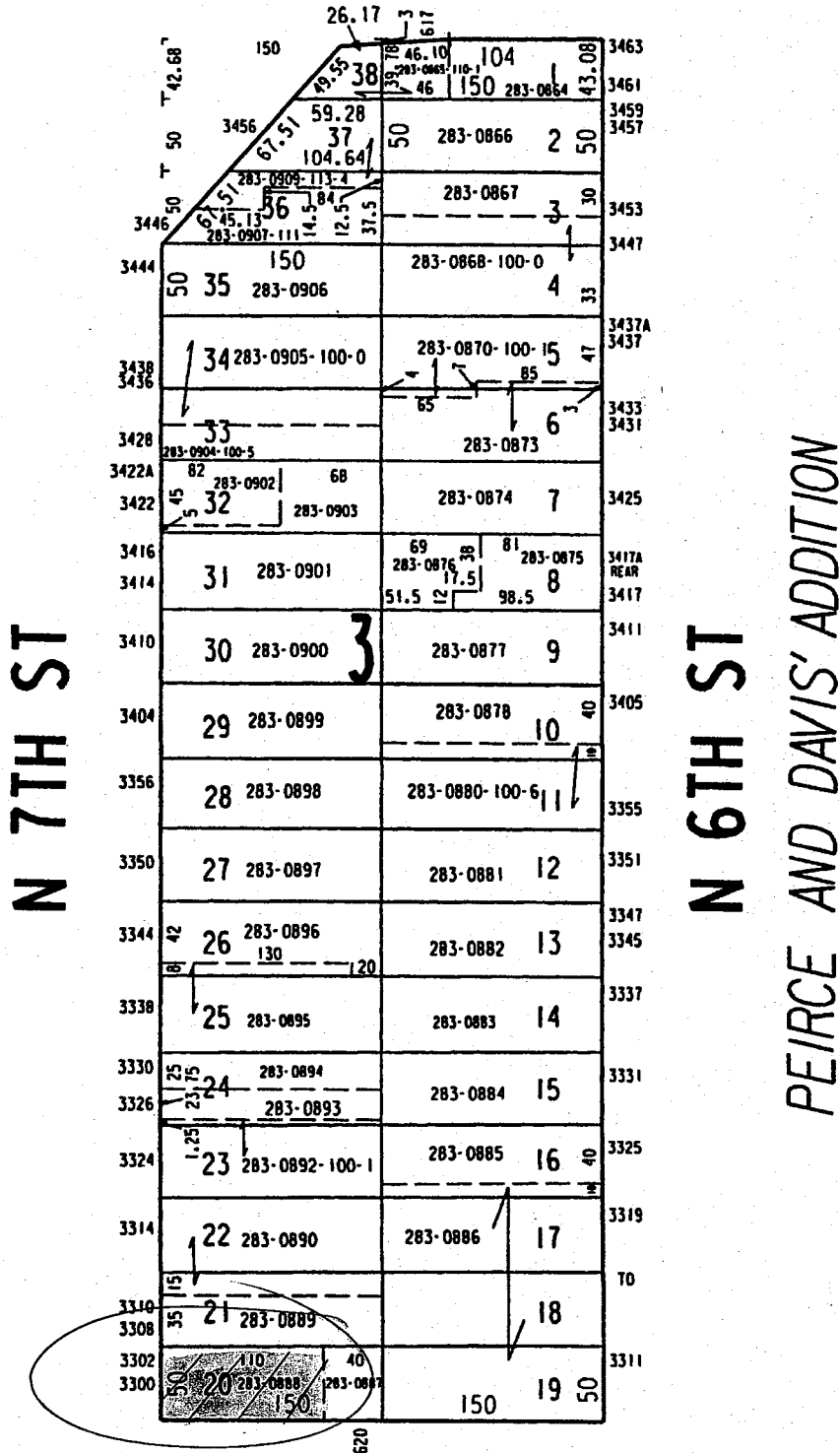
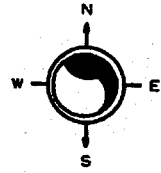
ATLAS P. 283

283

283-07

SCALE 1" = 100'

W KEEFE AV



W CONCORDIA AV

PEIRCE AND DAVIS' ADDITION