

# PORT OF MILWAUKEE PRESENTATION TO CAPITAL IMPROVEMENTS COMMITTEE 9-4-2014



SLIDE NUMBER 1



# The Port of Milwaukee

**The Port of Milwaukee is a critical  
transportation and distribution  
link to Southeastern Wisconsin's  
Economy**

# **The Commercial Port's** **Mission**

The Mission of the Port is to enhance the overall economic and social environment of our region by stimulating trade, business and employment.

Consistent with the Port's water-related location, the Port shall strive to be a premier provider of transportation and distribution services for its commercial customers and support public recreation, leisure and other uses the Port deems to be in the public interest.

**Shipping through the Port of  
Milwaukee saves area  
consumers over \$58 million  
annually on transportation  
costs.**



# PORT OF MILWAUKEE PRESENTATION TO CAPITAL IMPROVEMENTS COMMITTEE 9-4-2014

## OVERVIEW

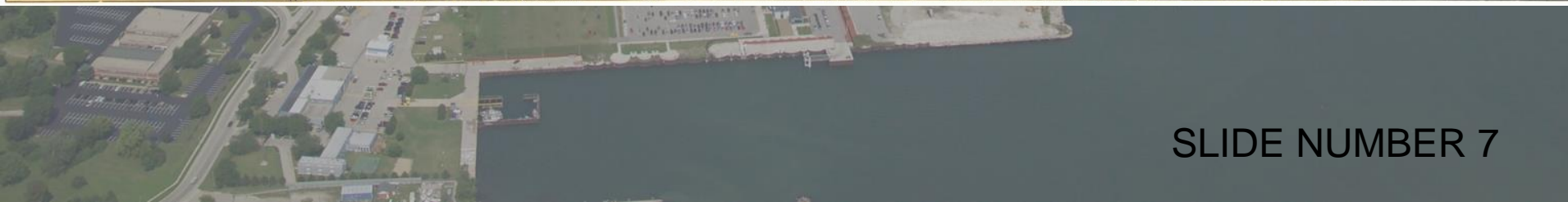
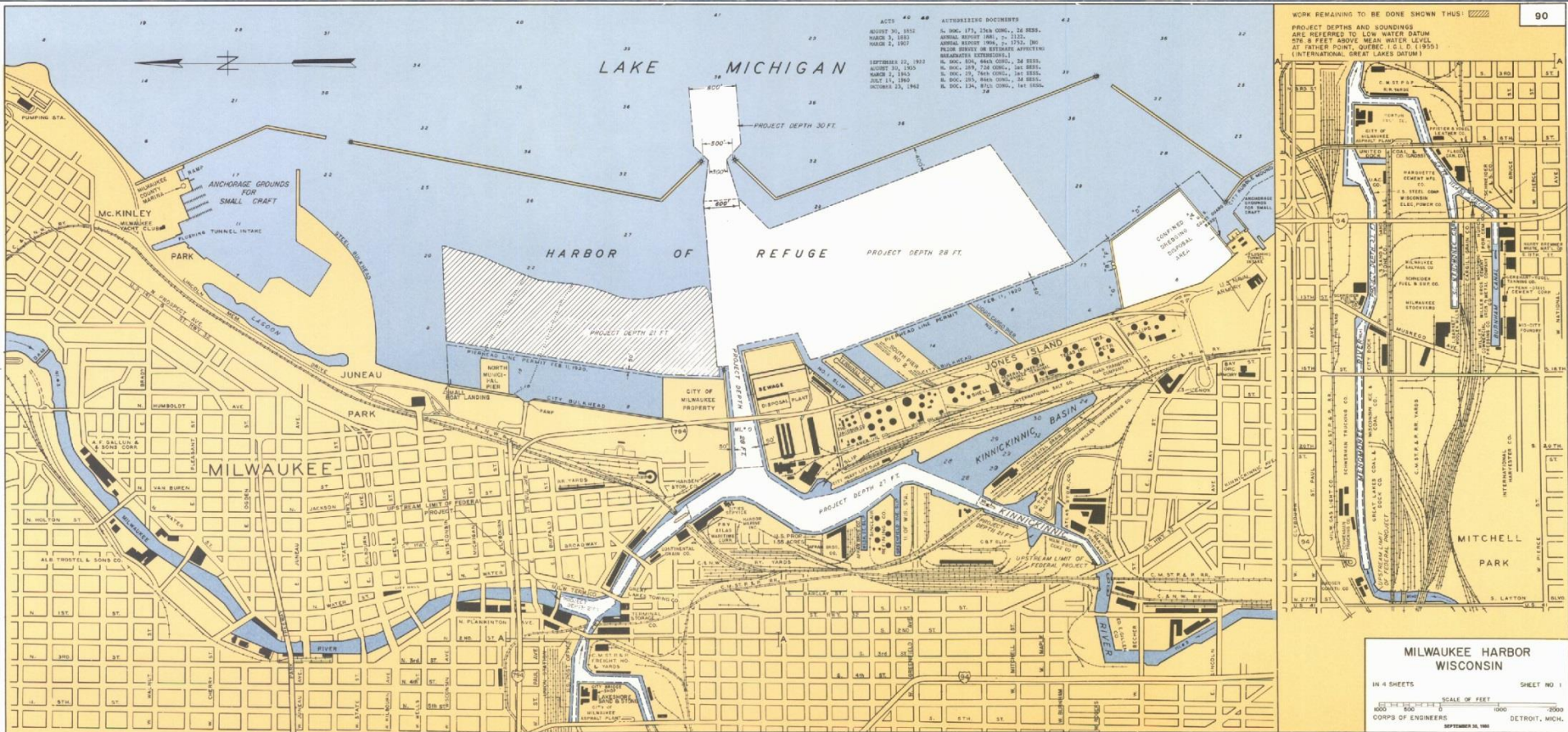
- ⚓ WATERWAYS
- ⚓ DOCKWALLS
- ⚓ DREDGING
- ⚓ SHIP APRONS & ROADS
- ⚓ PIERS & TERMINALS
- ⚓ PIPELINES
- ⚓ SEWERS
- ⚓ WATER LINES
- ⚓ ELECTRIC SERVICES
- ⚓ RAILROAD TRACK
- ⚓ BUILDINGS
- ⚓ EQUIPMENT
- ⚓ ENVIRONMENTAL REMEDIATION
- ⚓ GRANTS

# PORT OF MILWAUKEE PRESENTATION TO CAPITAL IMPROVEMENTS COMMITTEE 9-4-2014

⚓ WATERWAYS

SLIDE NUMBER 6

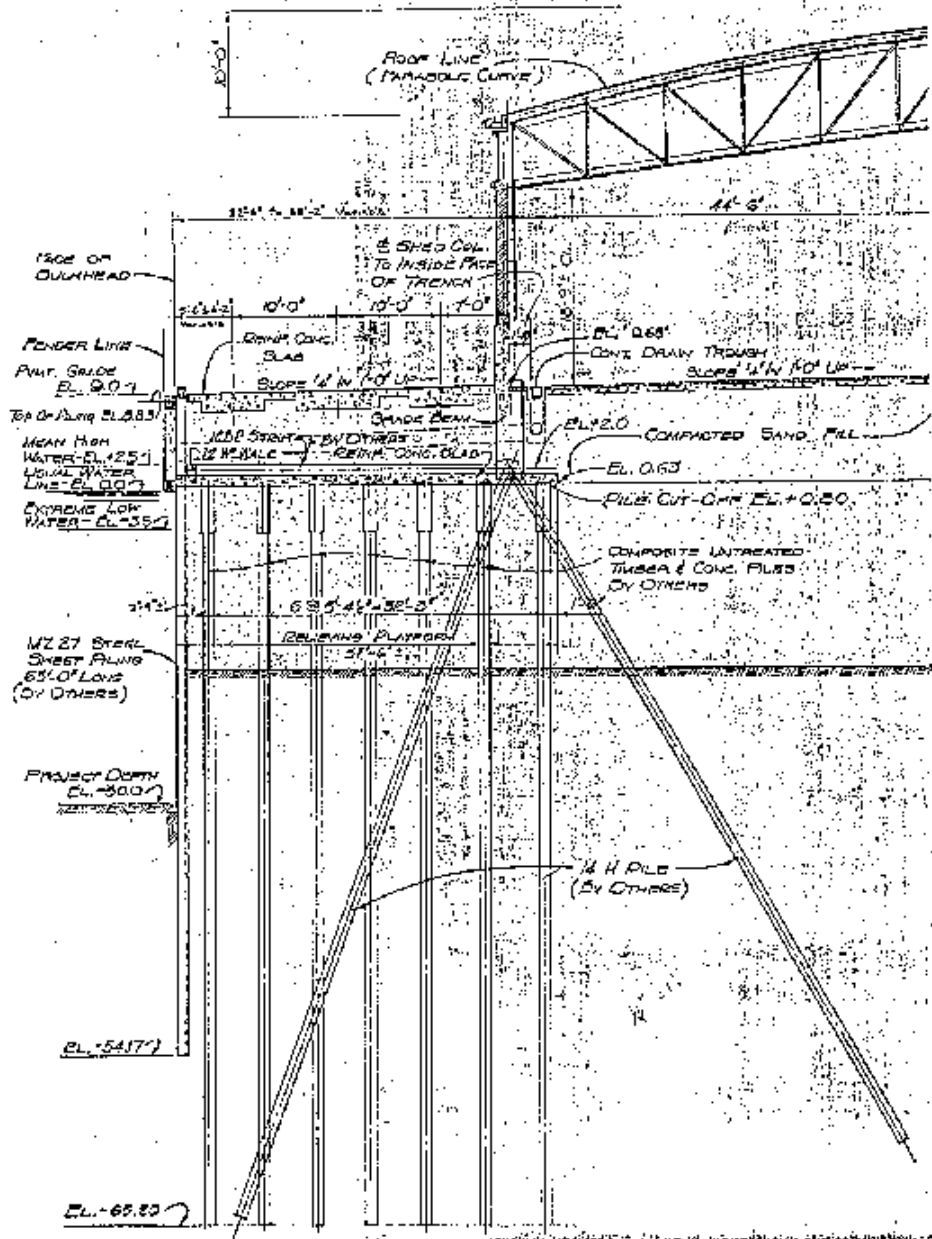
# PORT OF MILWAUKEE PRESENTATION TO CAPITAL IMPROVEMENTS COMMITTEE 9-4-2014



# PORT OF MILWAUKEE PRESENTATION TO CAPITAL IMPROVEMENTS COMMITTEE 9-4-2014

## ⚓ DOCKWALLS







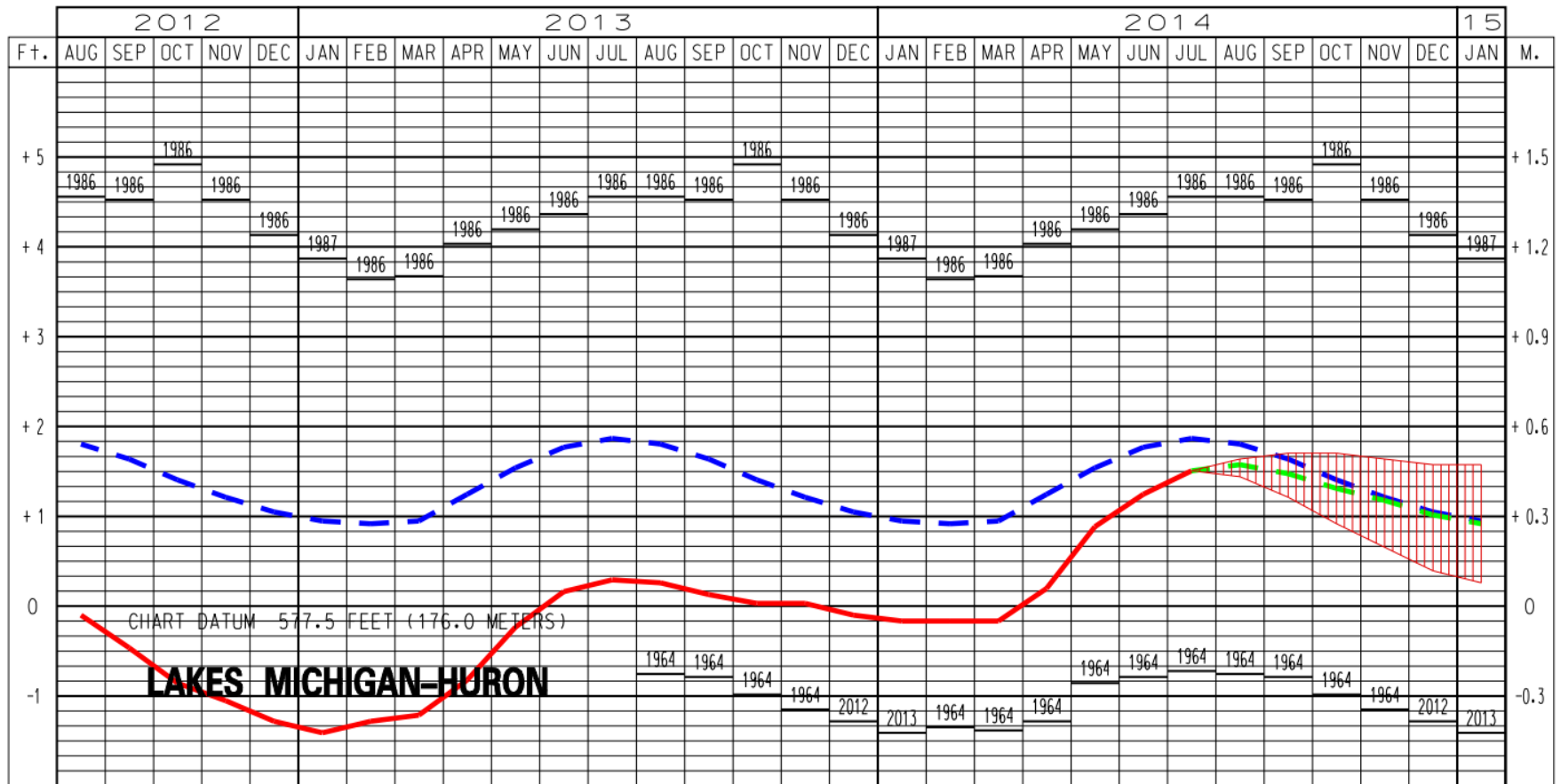


# PORT OF MILWAUKEE PRESENTATION TO CAPITAL IMPROVEMENTS COMMITTEE 9-4-2014

⚓ DREDGING

SLIDE NUMBER 12

# LAKES MICHIGAN-HURON WATER LEVELS - AUGUST 2014



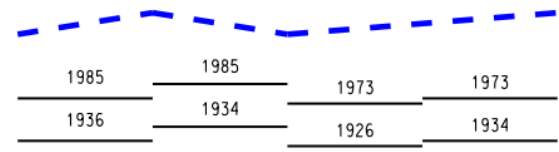
## LEGEND

### LAKE LEVELS

RECORDED  
PROJECTED



AVERAGE \*\*  
MAXIMUM \*\*  
MINIMUM \*\*



\*\* Average, Maximum and Minimum for period 1918-2013

Like snow that fall on roads, material that settles out in the shipping channel needs to be removed to kept the ships moving.



The material is dredged and placed in a dredge material management facility creating new usable land over time.



# PORT OF MILWAUKEE PRESENTATION TO CAPITAL IMPROVEMENTS COMMITTEE 9-4-2014

## ⚓ SHIP APRONS & ROADS

# Type of Dock loading









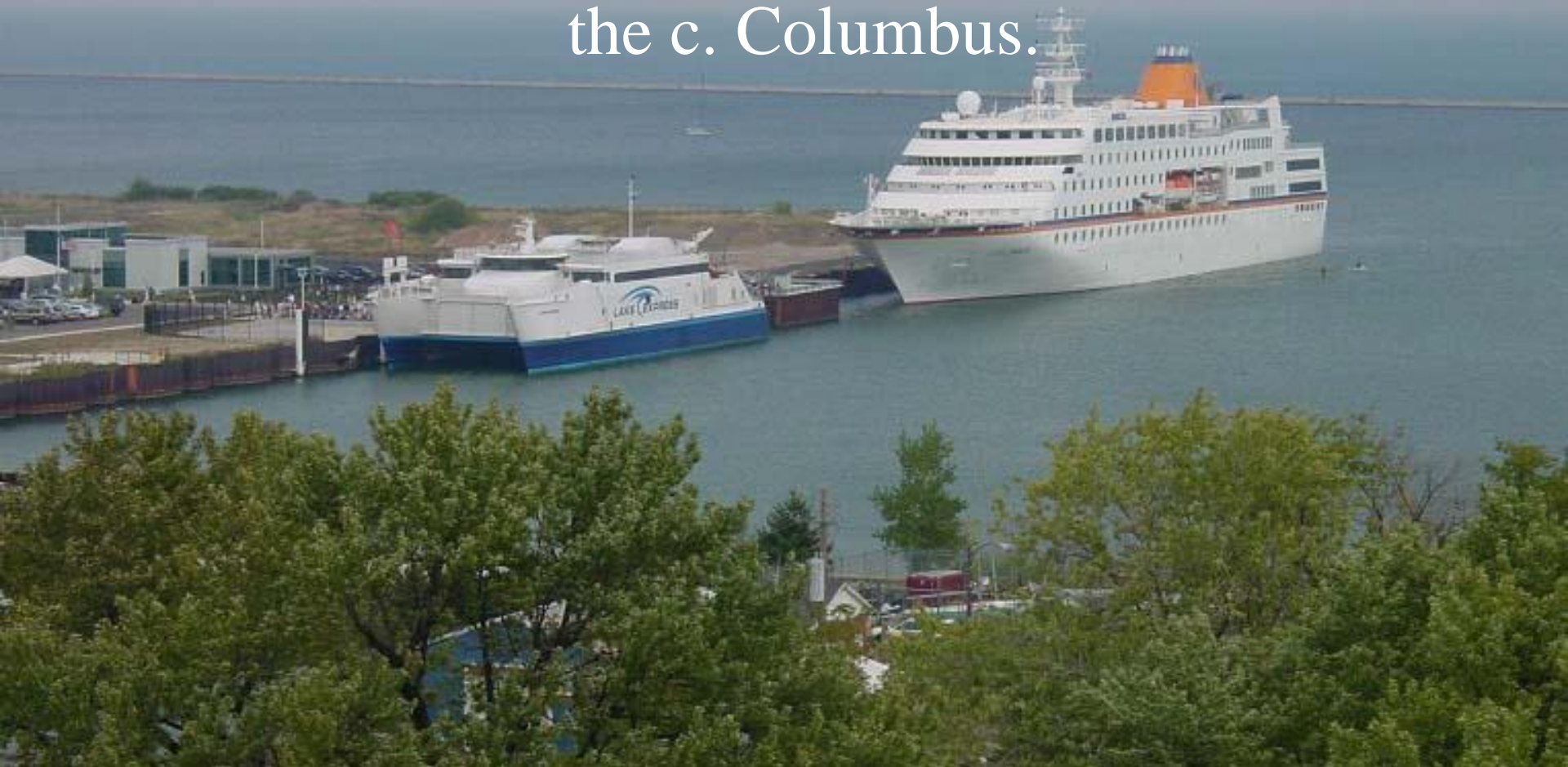


# PORT OF MILWAUKEE PRESENTATION TO CAPITAL IMPROVEMENTS COMMITTEE 9-4-2014

## ⚓ PIERS & TERMINALS



# International and domestic cruise ship business the c. Columbus.



# Discovery World at Pier Wisconsin

**cruise ship dock**



Small ships like the Grand Mariner make 4 to 5 trips each year to the cruise ship dock at Pier Wisconsin.

# PORT OF MILWAUKEE PRESENTATION TO CAPITAL IMPROVEMENTS COMMITTEE 9-4-2014

## ⚓ PIPELINES







# PORT OF MILWAUKEE PRESENTATION TO CAPITAL IMPROVEMENTS COMMITTEE 9-4-2014

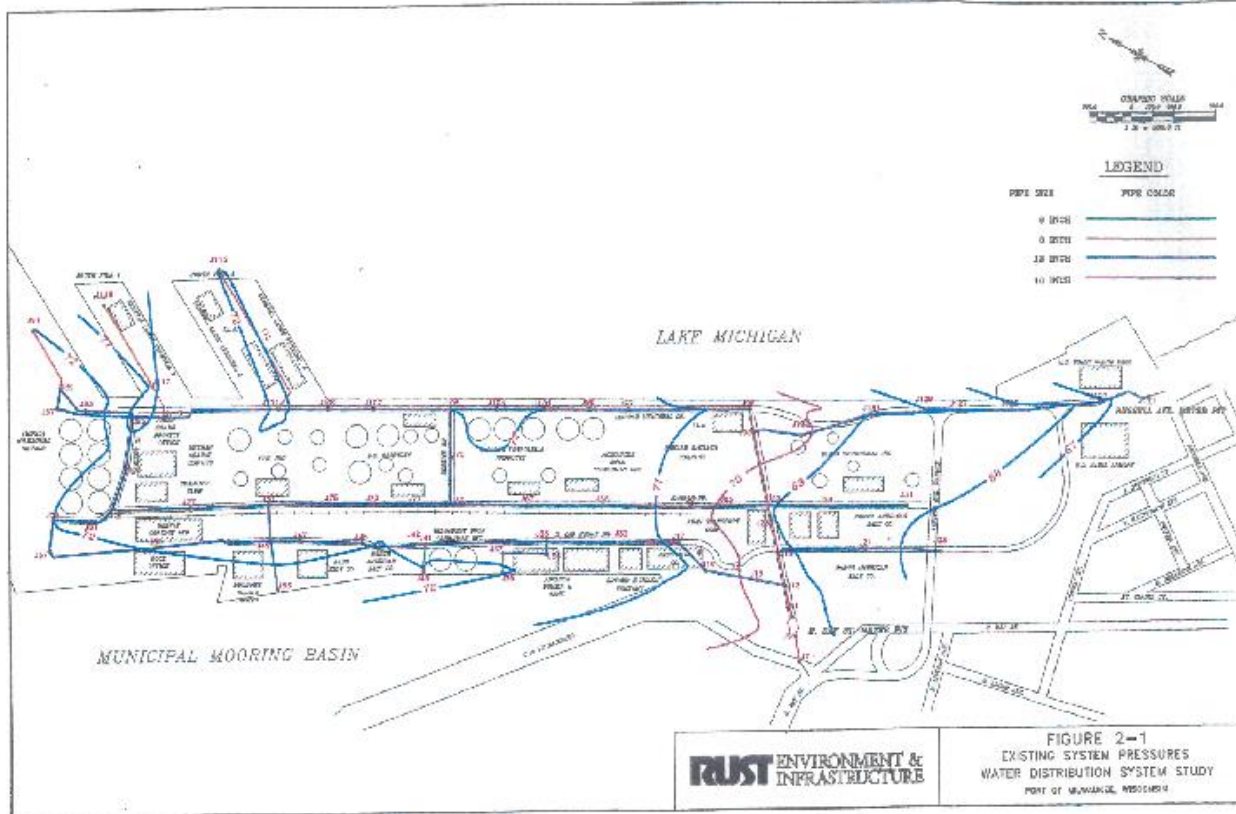
⚓ SEWERS

# PORT OF MILWAUKEE PRESENTATION TO CAPITAL IMPROVEMENTS COMMITTEE 9-4-2014

⚓ WATER LINES

SLIDE NUMBER 28

# PORT OF MILWAUKEE PRESENTATION TO CAPITAL IMPROVEMENTS COMMITTEE 9-4-2014



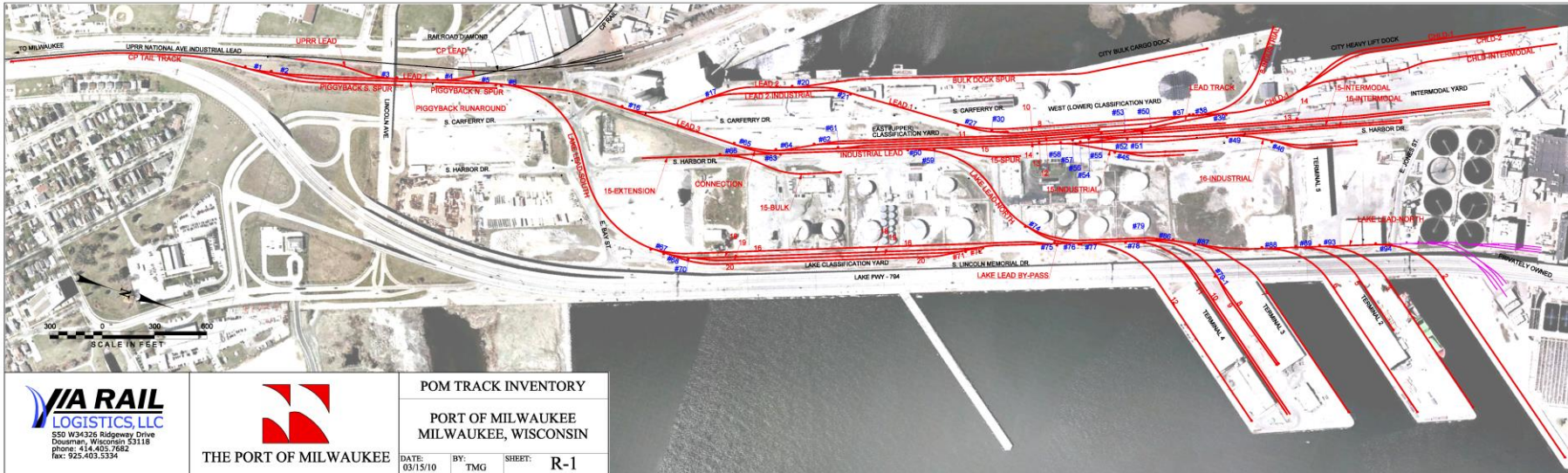
# PORT OF MILWAUKEE PRESENTATION TO CAPITAL IMPROVEMENTS COMMITTEE 9-4-2014

## ⚓ ELECTRIC SERVICES

# PORT OF MILWAUKEE PRESENTATION TO CAPITAL IMPROVEMENTS COMMITTEE 9-4-2014

 RAILROAD TRACK

# PORT OF MILWAUKEE PRESENTATION TO CAPITAL IMPROVEMENTS COMMITTEE 9-4-2014





# Type of Dock Loading





UTLX 672559

CRDX

4800 100000



# PORT OF MILWAUKEE PRESENTATION TO CAPITAL IMPROVEMENTS COMMITTEE 9-4-2014

📍 BUILDINGS

# PORT OF MILWAU GENERAL CARGO TERMINA



**FEDERAL  
MARINE  
TERMINALS, INC.**





LAKE ONTARIO  
MAJURO

PORT OF MILWAUKEE  
GENERAL CARGO TERMINAL 2

DANGER  
NO SWIMMING  
NO BOATING

# PORT OF MILWAUKEE PRESENTATION TO CAPITAL IMPROVEMENTS COMMITTEE 9-4-2014







# PORT OF MILWAUKEE PRESENTATION TO CAPITAL IMPROVEMENTS COMMITTEE 9-4-2014

⚓ EQUIPMENT



# PORT OF MILWAUKEE PRESENTATION



SLIDE NUMBER 43







# PORT OF MILWAUKEE PRESENTATION TO CAPITAL IMPROVEMENTS COMMITTEE 9-4-2014

## ⚓ ENVIRONMENTAL REMEDIATION

# PORT OF MILWAUKEE PRESENTATION TO CAPITAL IMPROVEMENTS COMMITTEE 9-4-2014

⚓ GRANTS

SLIDE NUMBER 48



An aerial photograph of Milwaukee, Wisconsin, showing the city skyline, the harbor, and the Port of Milwaukee. The image is used as a background for a presentation slide. The text is overlaid on the top and center of the image.

PORT OF MILWAUKEE PRESENTATION  
TO CAPITAL IMPROVEMENTS  
COMMITTEE 9-4-2014

QUESTIONS ?  
THANKS YOU !