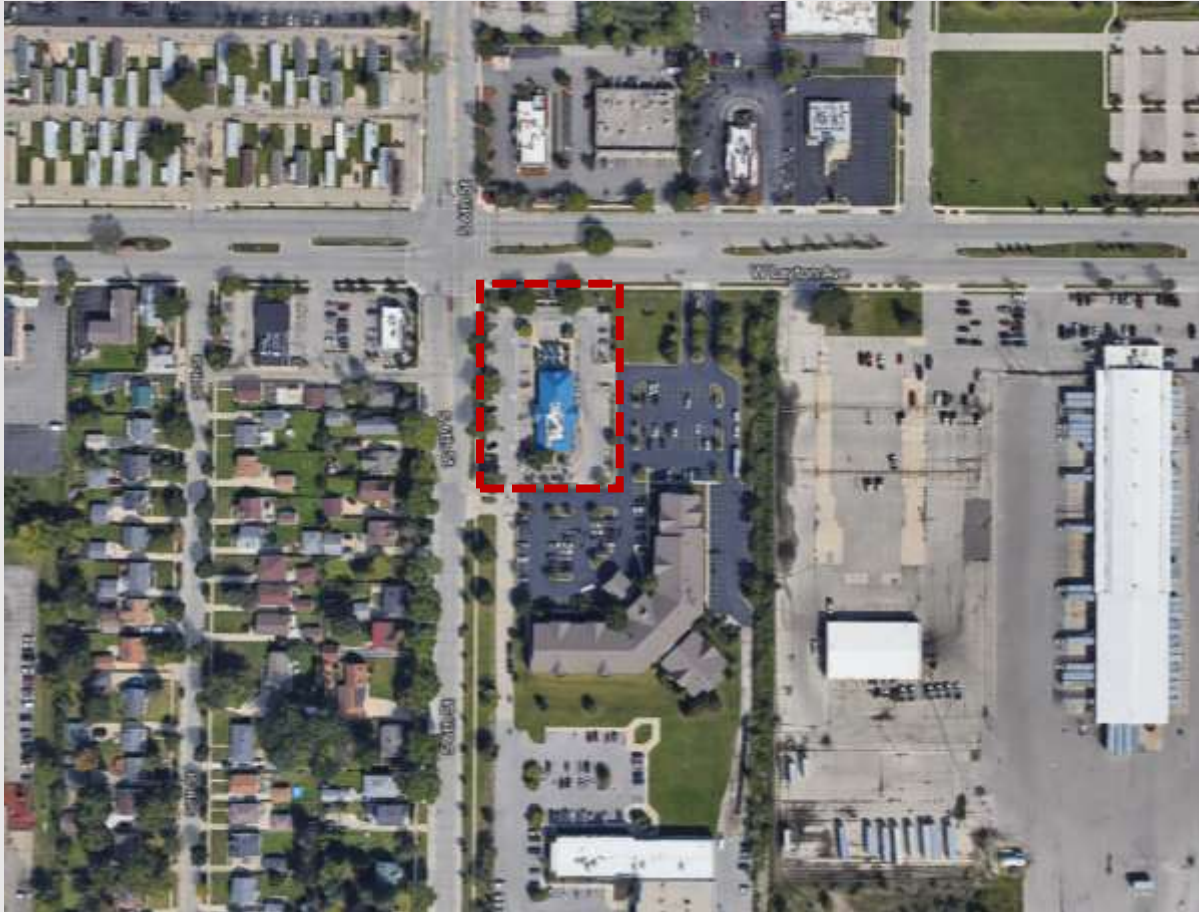


File No. 221807. Substitute resolution relating to a Minor Modification to the Detailed Planned Development known as Airport Business Center to allow changes to the Culver's drive-through facility located at 575 West Layton Avenue, on the south side of West Layton Avenue, east of South 6th Street, in the 13th Aldermanic District.



File No. 221807. Site context.



View from parking lot looking southwest



View from parking lot looking southeast



View from parking lot looking northeast

File No. 221807. Consistency with the Comprehensive Plan.



- Within the Southeast Side Area Plan boundary, which was adopted in 2008, and the Aerotropolis Development Plan, adopted in 2017.
- Proposed improvements to the site layout and operations are consistent with the Plan's goals of supporting retail and hospitality in this area.

A photograph of a Culver's restaurant building with a stone facade and a large illuminated sign. The image is partially obscured by a dark blue diagonal graphic element.

Culver's

Culver's

575 W LAYTON AVE

MINOR MODIFICATION TO DPD

A decorative pattern of light gray, wavy lines that fills the bottom right portion of the page.

TEAM INTRODUCTION



Dimitri Dimitropoulos
Culver's Franchisee



Brett Hickey
*Consultant Design
Civil Engineer*



Joe Mayer
*Consultant Design
Civil Engineer*



Jay Campbell
General Contractor



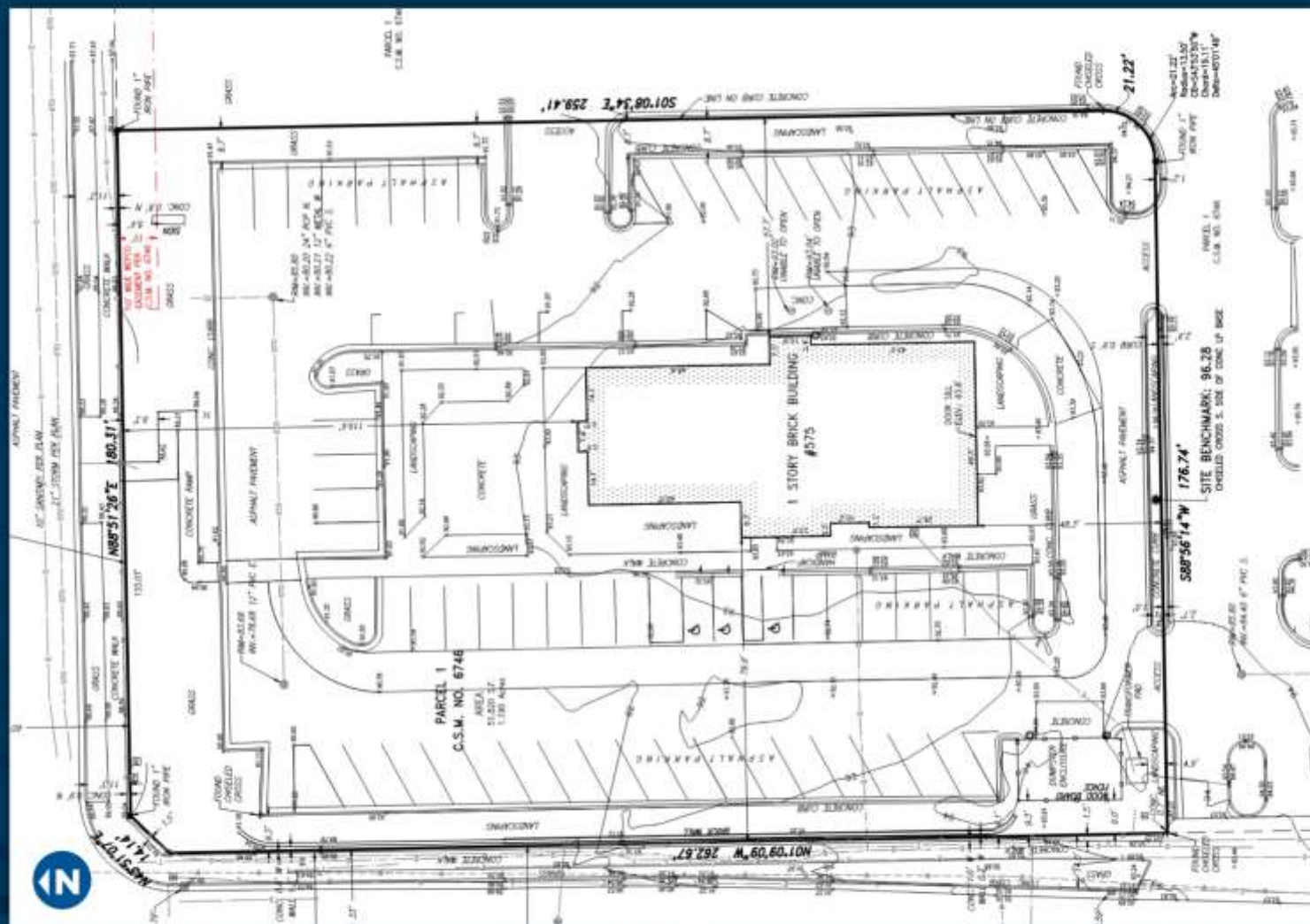
PROJECT LOCATION



575 W LAYTON AVE MINOR MODIFICATION TO DPD

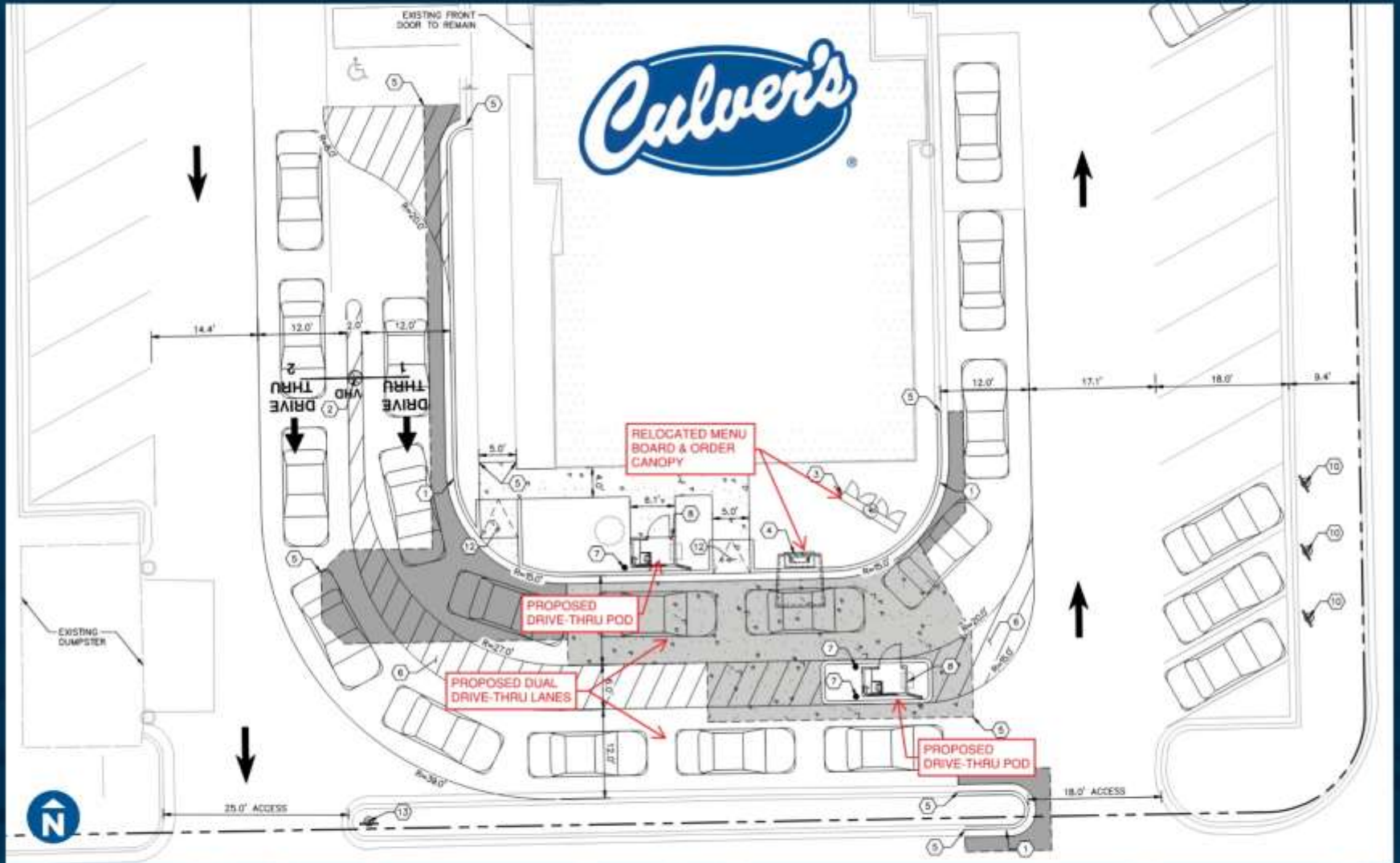
Culver's

EXISTING SITE CHARACTERISTICS



575 W LAYTON AVE MINOR MODIFICATION TO DPD

PROPOSED SITE IMPROVEMENTS



575 W LAYTON AVE MINOR MODIFICATION TO DPD



DRIVE-THRU POD DETAILS



FRONT APPROACH
ELEVATION



DRIVE THRU ELEVATION



MENU SIDE
ELEVATION



BACK ELEVATION