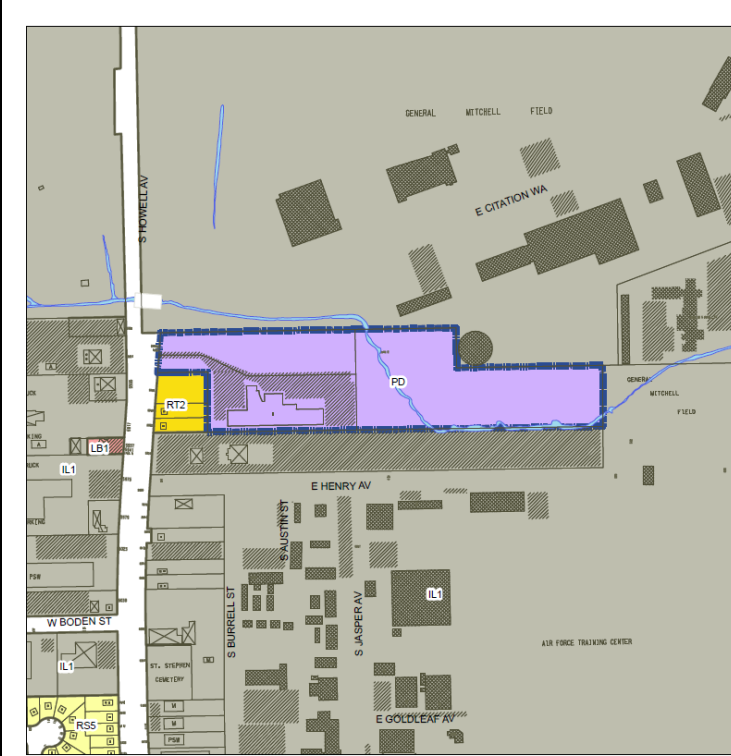


File No. 130632. An ordinance relating to the First Amendment to a Detailed Planned Development, for hotel development, on land located on the east side of South Howell Avenue, north of West College Avenue, in the **13th Aldermanic District**. This zoning change was requested by Raymond Management Company, and would permit construction of a 3-story hotel at 5880 South Howell Avenue. This hotel is the second phase of development at this site. The first phase hotel was previously approved, and subsequently constructed.



FN 130632
Amend DPD Zoning
October 2013

Legend

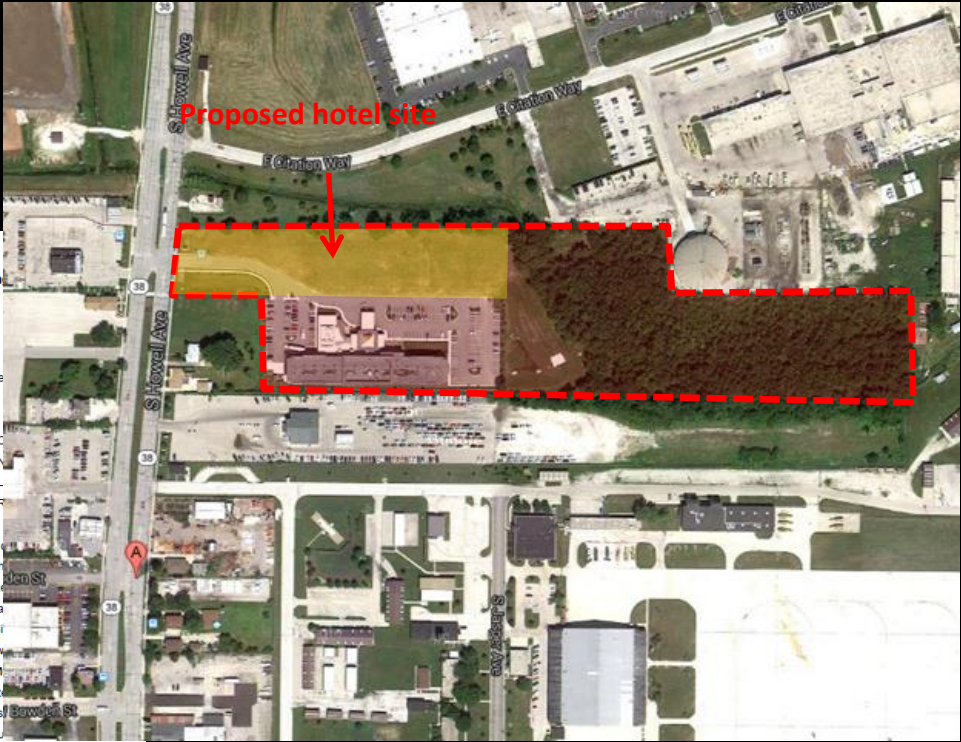
- Zoning Change
- Zoning

MAPCODE

- Commercial - C
- Commercial - M
- Commercial - L
- Commercial - P
- Downtown
- Industrial - Office
- Industrial - Light
- Industrial - Mixed
- Industrial - Heavy
- Residential - Single-Family
- Residential - Two-Family
- Residential - Medium-Density
- Residential - Rural
- Special - Parks
- Special - Institutional
- Special - Planned Development
- Special - Redevelopment District

0 190 380 760 Feet

Data Source:
 Dept. of City Development 2013



Context Photos
View from Howell Avenue



Context Photos



View from S Howell Av looking south of the site

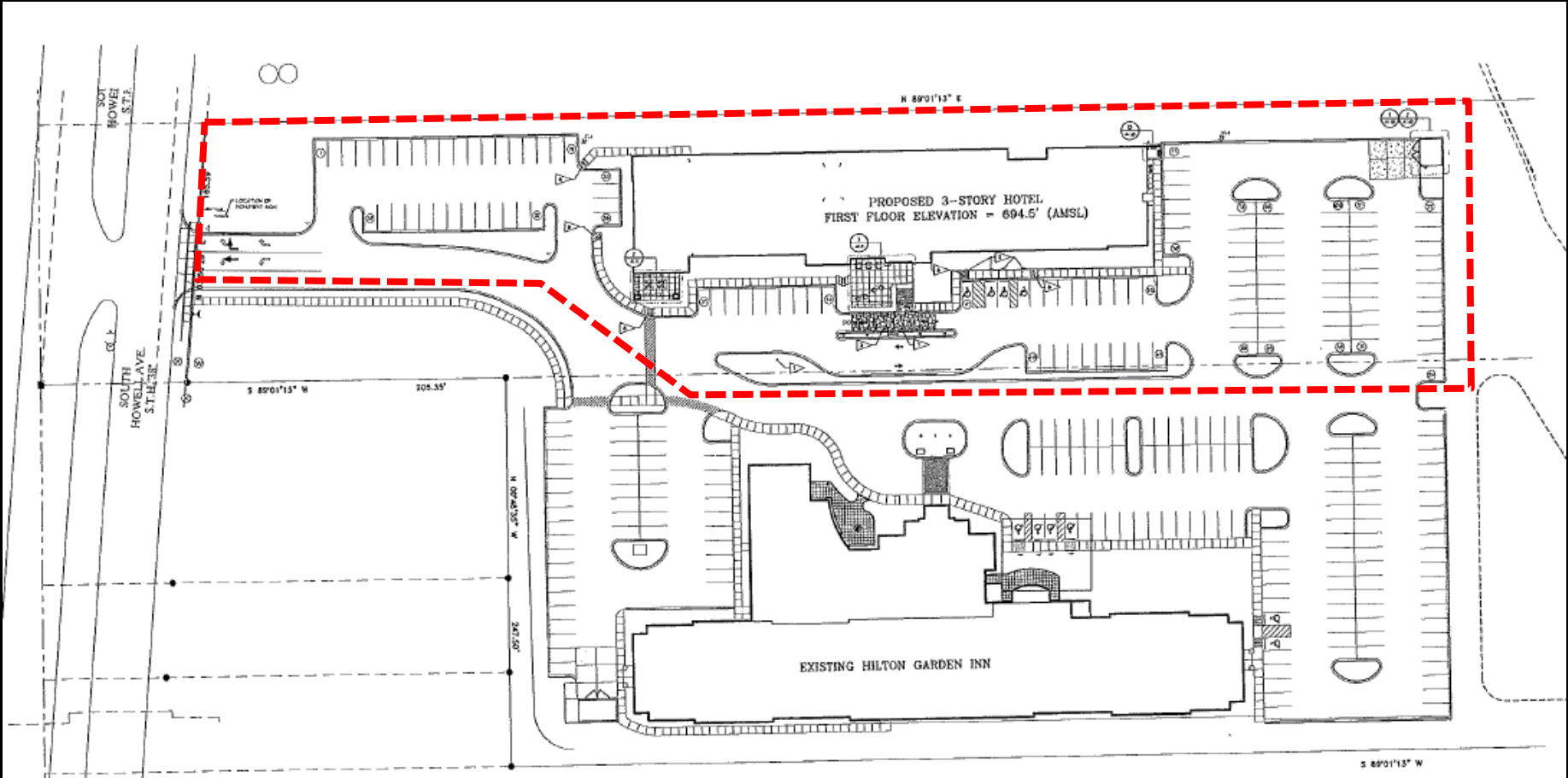


View from S Howell Av looking north west



View from S Howell Av looking south west

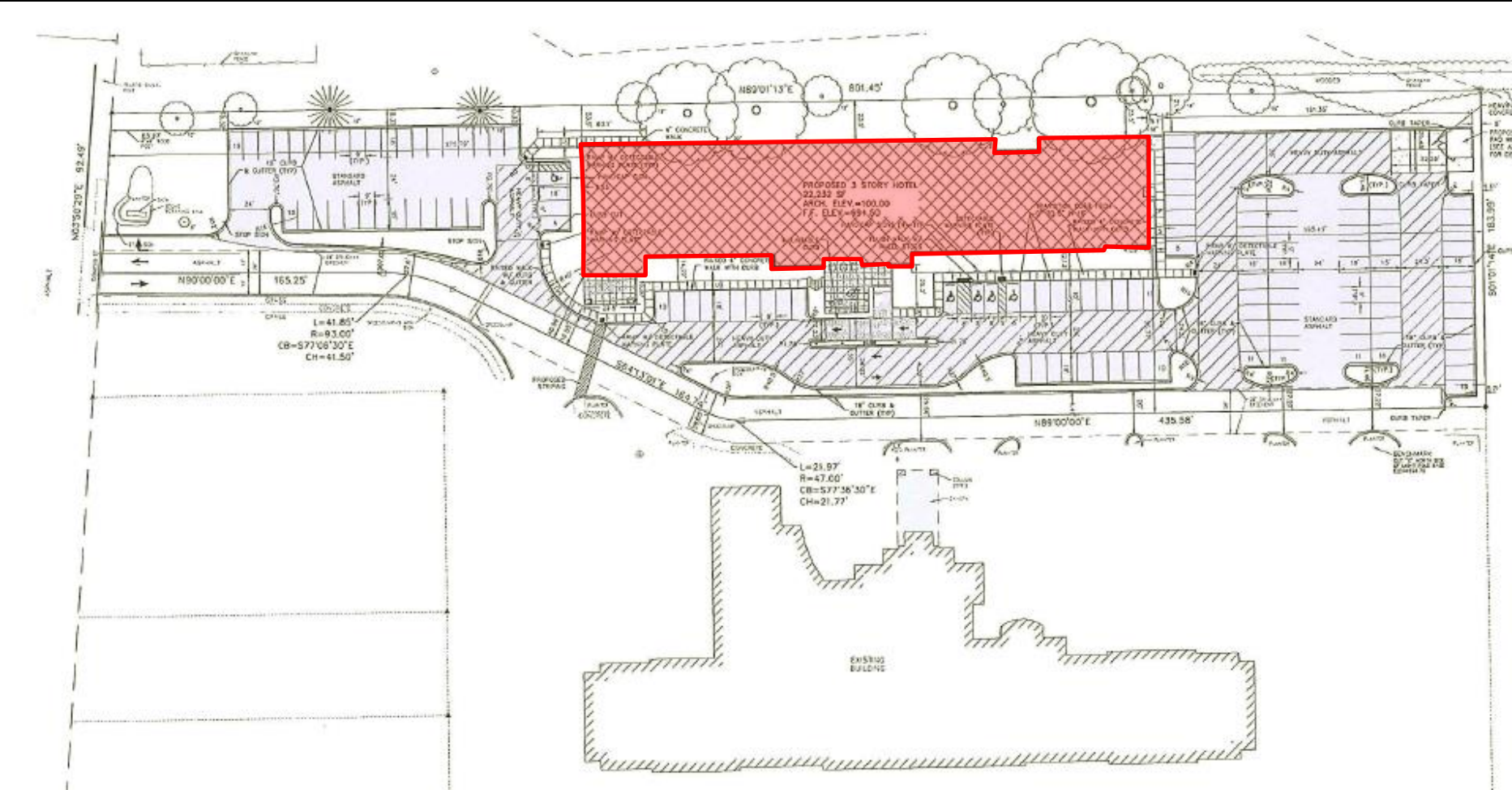
Architectural Site Plan



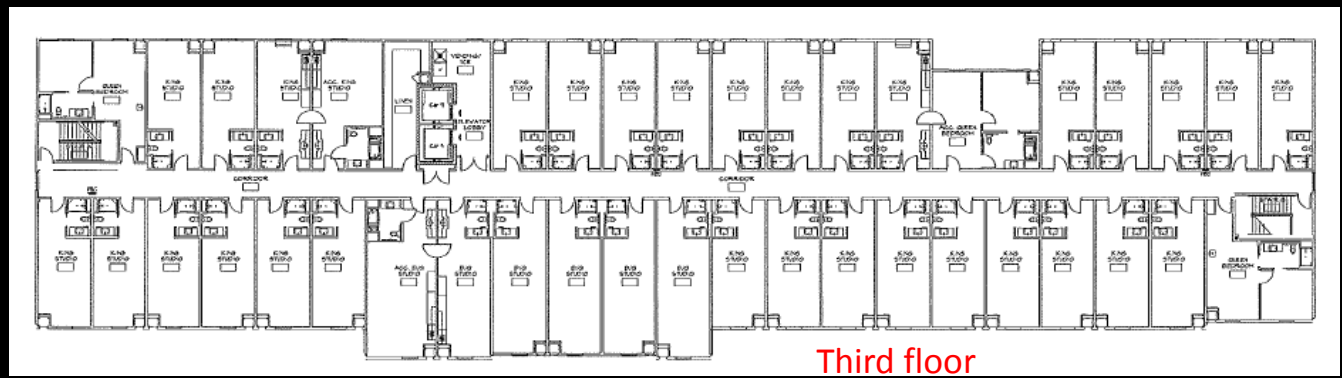
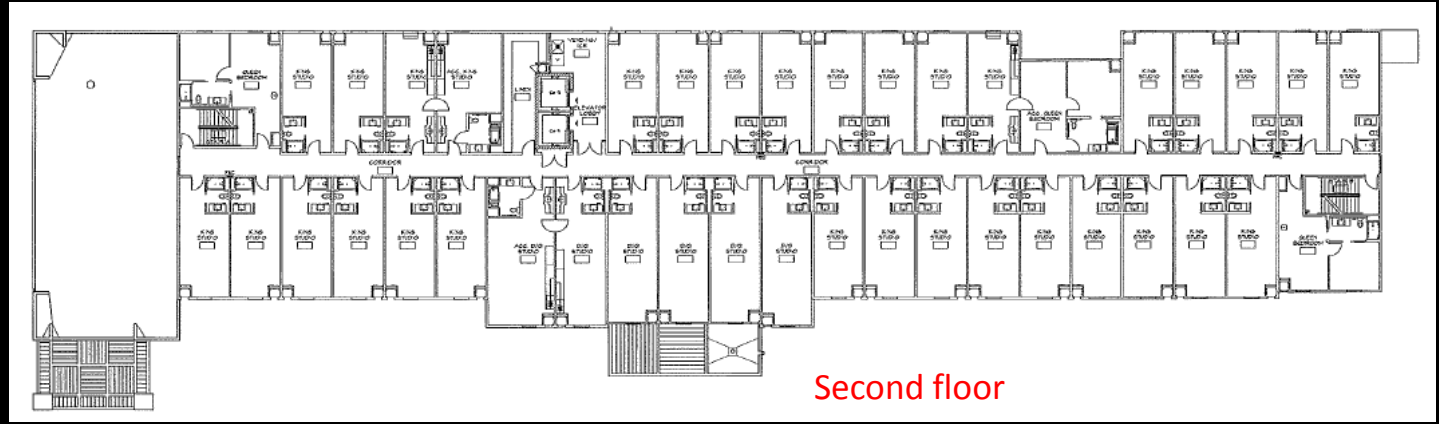
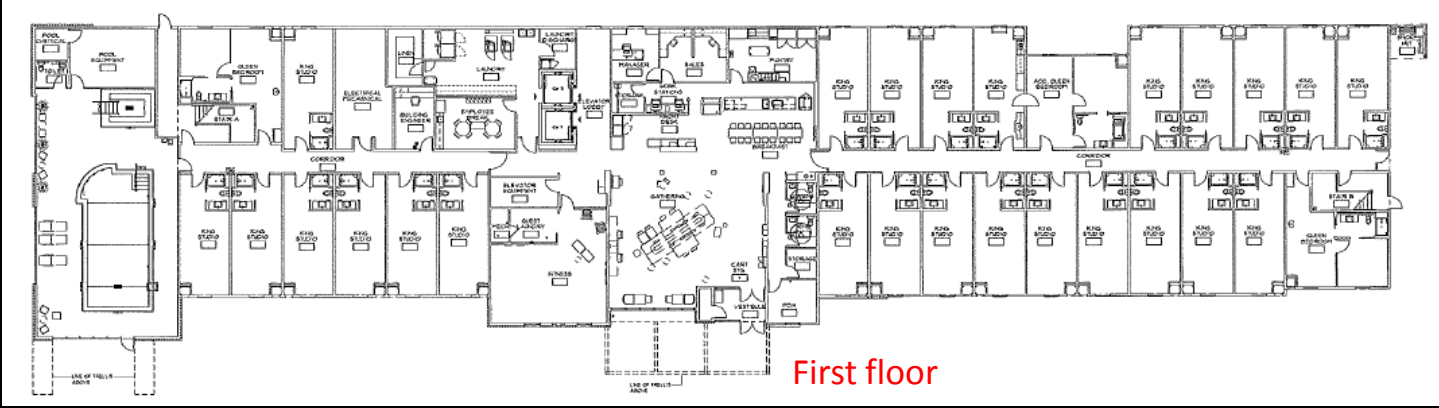
SITE PLAN COORDINATION AND

1. REFER TO CIVIL DRAWINGS INCLUDED IN THIS FORM TO ESTABLISH GENERAL SCOPE.
2. ANY CHANGE OR DEVIATION TO ANYAS AND A PART OF CONSTRUCTION SHALL AS GENERAL UNDERSTOOD OR ABOVE RESPONSIBILITY OF APPLICANT TO HIS OWN CONSULTING ENGINEER.
3. EXISTING GARDEN AND INN TYPICAL SITE ONLY. THE CIVIL DRAWINGS FOR LAYOUT AND PLAN.

Site Plan



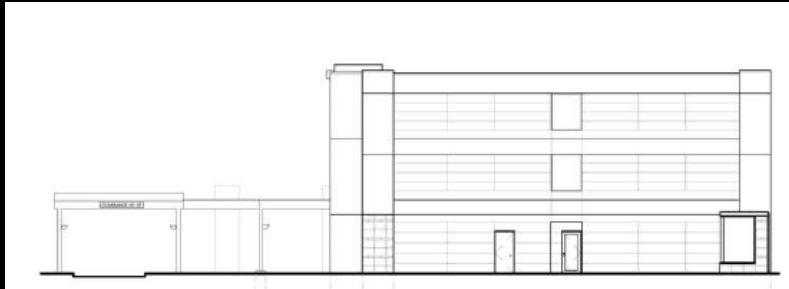
Floor Plans



Elevations



South Elevation (facing parking lot)



East Elevation

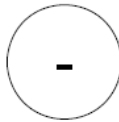
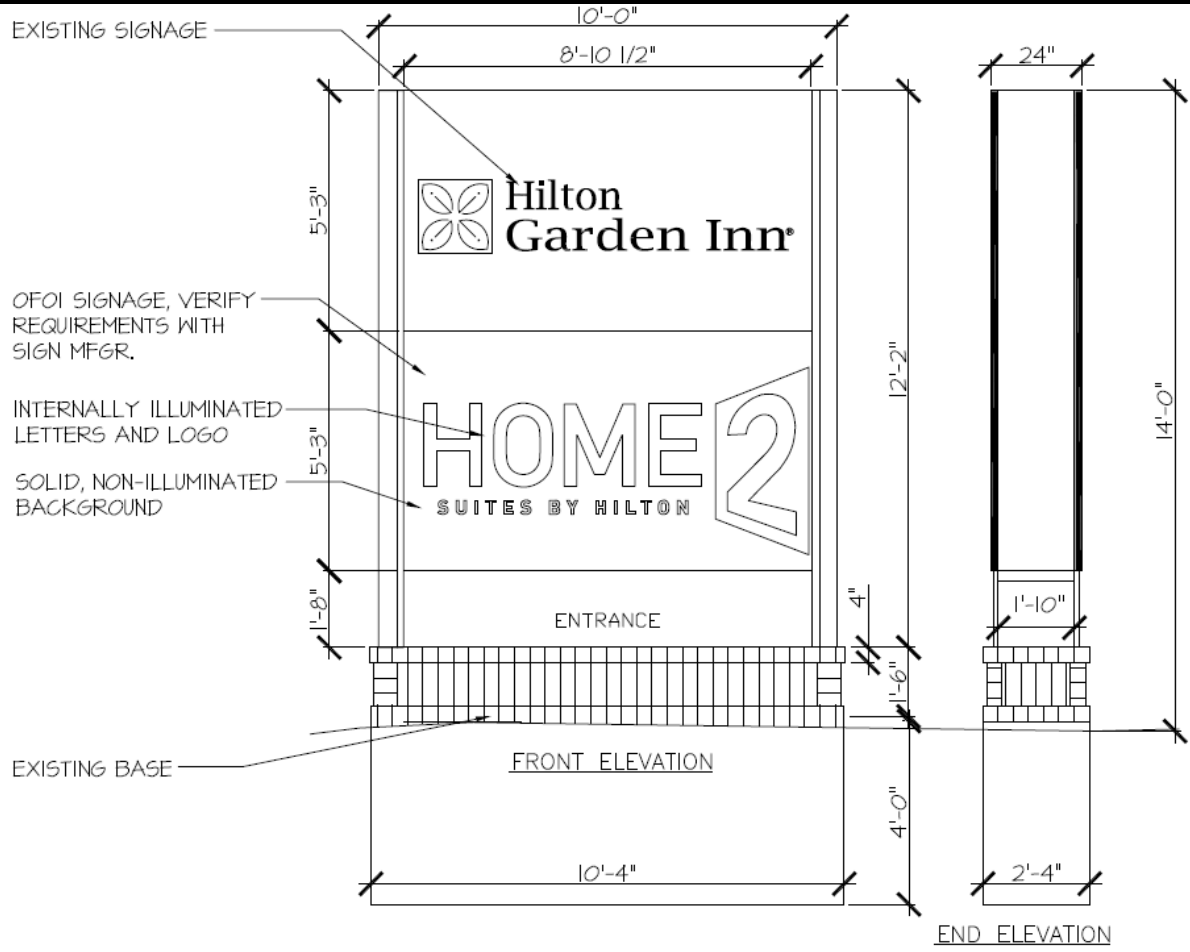


West (Howell Av) Elevation



North Elevation (facing airport)

Ground Sign



ELEVATION - GROUND SIGN

NOT TO SCALE