



Department of Neighborhood Services
Enforcement Section
4001 S. 6th St.,
Milwaukee, WI 53221

INSPECTION REPORT AND ORDER TO CORRECT CONT

Department Copy

112
Re: 2600 W GLENDALE AV

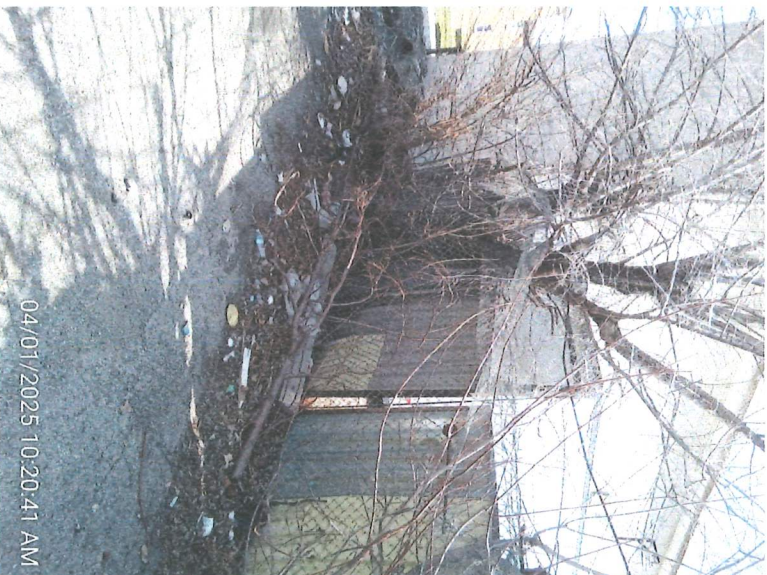
Taxkey #: 231-9975-100

SOLID WASTE VIOLATION

IMPORTANT NOTICE - READ CAREFULLY

A recent inspection disclosed a nuisance which, if not corrected within the time specified, will be corrected by the City and the costs (including those of the City) will be charged against the property. A copy of this order will be mailed for the first offense period. If you have circumstances that may warrant an extension, please call below. You may appeal the charge assessed against your property to the Administrative Appeals Board by contacting the Office of the City Clerk at 200 E. Wells St. Milwaukee, WI 53202 within 30 days of the assessment.

You are directed to remove all solid waste, garbage and debris which violate the Code of Ordinances (Chapter 79), 024/601 (7/24/00) 12 AMV. If you fail to remove them, the condition of the property is subject to enforcement action.



2600 W. Greendale

Before

AETNA
SERVICES



Aban w Gwendale

AFTER

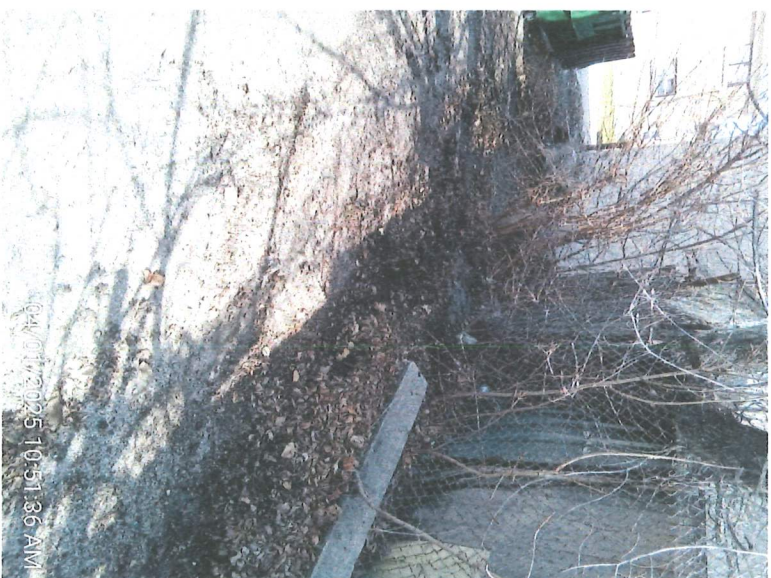
AETNA
SERVICES



2600 W. Glenwood

Before

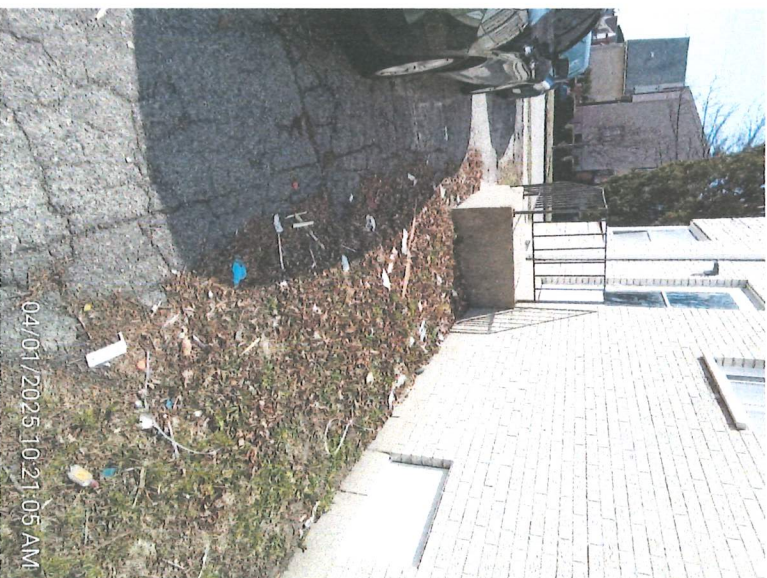
AETNA
SERVICES



Area is cleared

AFTER

AETNA
SERVICES



2600 W. Cherokee

Before

AETNA
SERVICES



2600 W. Glendale

AFTER

AETNA
SERVICES