

PROJECT

New Storefront
& Remodeling
Freddy's
Restaurant
1035 W. National
Milwaukee, WI
53204

PROJECT NO. 06-40

DATE 9/26/06

REVISIONS

NO.	DESCRIPTION

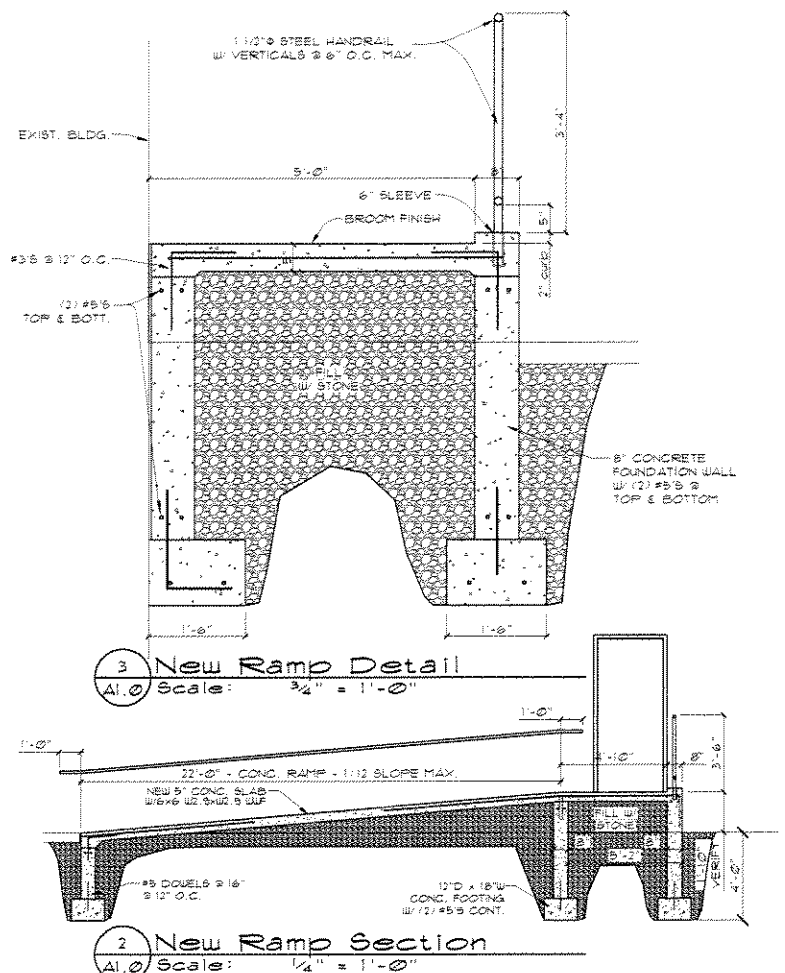
CHECKED BY L.B.

DRAWN BY M.M.

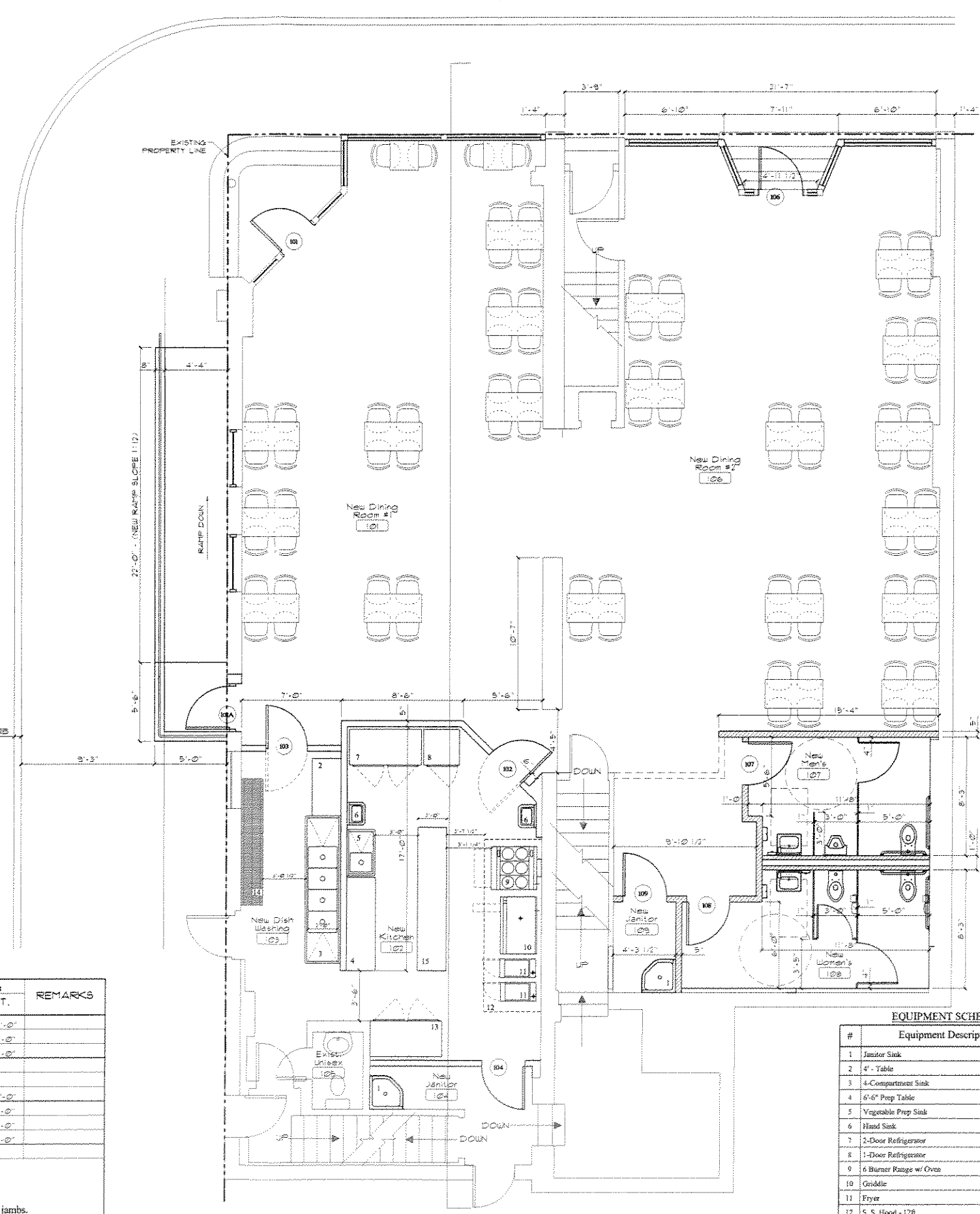
SCALE as noted

SHEET NO. A1.0

SHEET TITLE
New Floor
Plan & Details



N. 11TH STREET



1 New First Floor Plan
Scale: 1/4" = 1'-0"

DOOR NO.	DOOR		FRAME				INFORMATION							
	WIDTH	HEIGHT	MATERIAL	FINISH	LOUVER	GLASS	TYPE	MATERIAL	FINISH	DETAIL NO.	GLASS	LABEL	HARDWARE SET	REMARKS/GENERAL NOTES
101	3'-0"	7'-0"	WD	Stn	X	WD	Stn							
101A	3'-0"	7'-0"	WD	Stn	X	WD	Stn							
102	3'-0"	7'-0"	WD	Stn	X	WD	Stn							
103	3'-0"	7'-0"	WD	Stn	X	WD	Stn							
104	3'-0"	7'-0"	WD	Stn	X	WD	Stn							
105	3'-0"	7'-0"	WD	Stn	X	WD	Stn							
106	3'-0"	7'-0"	WD	Stn	X	WD	Stn							
107	3'-0"	7'-0"	WD	Stn	X	HM	Ph							
108	3'-0"	7'-0"	WD	Stn	X	HM	Ph							
109	3'-0"	7'-0"	WD	Stn	X	HM	Ph							

Abbreviations:
AL - Aluminum
Clr - Clear Anodized finish
FRP - Fiberglass Reinf. Polyester

HM - Hollow Metal
Pt - Painted finish
WD - Wood
Stn - Stained finish

General Notes:
1. See specifications 08712 for description of hardware groups.
2. All hollow metal frames to be finish painted.
3. All wood doors to be stain finished with all four edges stained and sealed.

NO.	ROOM NAME	FLOORING		WALL FINISHES				CEILING		REMARKS
		BASE	FLOOR	NORTH	SOUTH	EAST	WEST	MTL.	HT.	
101	Dining Room #1	CT	CT	Gyp Bd	PT.	Ex. Brick	Ex. Brick	Gyp Bd	14'-0"	
102	New Kitchen	QT	QT	Gyp Bd	FRP	Ex. Brick	FRP/SS	Gyp Bd	ACT-2	8'-0"
103	New Dishwashing	QT	QT	Gyp Bd	FRP	Ex. Brick	FRP	Gyp Bd	ACT-2	8'-0"
104	New Janitor	QT	QT	Gyp Bd	PT.	Ex. Brick	PT.	Gyp Bd	ACT-2	8'-0"
105	Ex. Unisex	Exist.	Exist.	PT.	PT.	PT.	PT.	PT.		
106	Dining Room #2	CT	CT	Gyp Bd	PT.	Ex. Brick	Ex. Brick	Gyp Bd	ACT-2	14'-0"
107	New Men's	CT	CT	Gyp Bd	PT.	Ex. Brick	Gyp Bd	PT.	ACT-2	8'-0"
108	New Women's	CT	CT	Gyp Bd	PT.	Ex. Brick	Gyp Bd	PT.	ACT-2	8'-0"
109	New Janitor	CT	CT	Gyp Bd	PT.	Gyp Bd	PT.	Gyp Bd	ACT-1	8'-0"

Abbreviations:
C.T. - Ceramic Tile
Q.T. - Quarry Tile
Conc. - Concrete
FRP - Fiberglass Reinforced Plastic (Wall panels for the kitchen areas)

ACT - Acoustical Ceiling Tile
Gyp. Bd. - Gypsum Board
Pt. - Paint
Ex. Brick - Existing Brick
Exist. - Existing

General Notes:
1. All new wood doors to be stained ST-1.
2. All new hollow metal frames to be painted PT.
3. All new window sills to be solid surface sill. Caulk at window & jambs.
4. Gypsum Board 2hr. ceiling/floor assembly to be installed in entire building.
5. ACT-2 to be washable vinyl faced ceiling panels.

EQUIPMENT SCHEDULE

#	Equipment Description	Qty.
1	Janitor Sink	2
2	4" Table	1
3	4-Compartment Sink	1
4	6'-6" Prep Table	1
5	Vegetable Prep Sink	1
6	Hand Sink	1
7	2-Door Refrigerator	1
8	1-Door Refrigerator	1
9	6 Burner Range w/ Oven	1
10	Griddle	1
11	Fryer	2
12	S. S. Hood - 12R.	1
13	2-Door Freezer	1
14	Dish Rack	1
15	10' Prep Table	1

PROJECT
New Storefront
& Remodeling
Freddy's
Restaurant
1035 W. National
Milwaukee, WI
53204

PROJECT NO. 06-40

DATE 9/26/06

REVISIONS

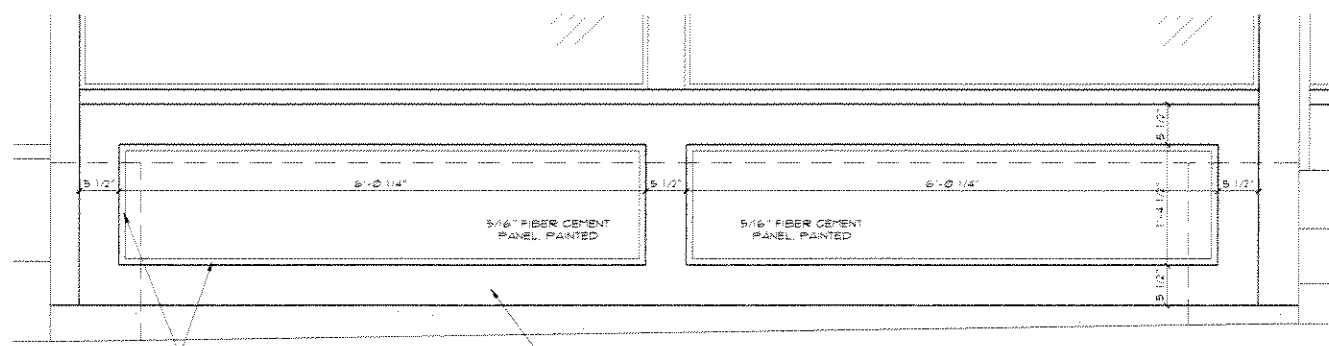
CHECKED BY L.B.

DRAWN BY M.M.

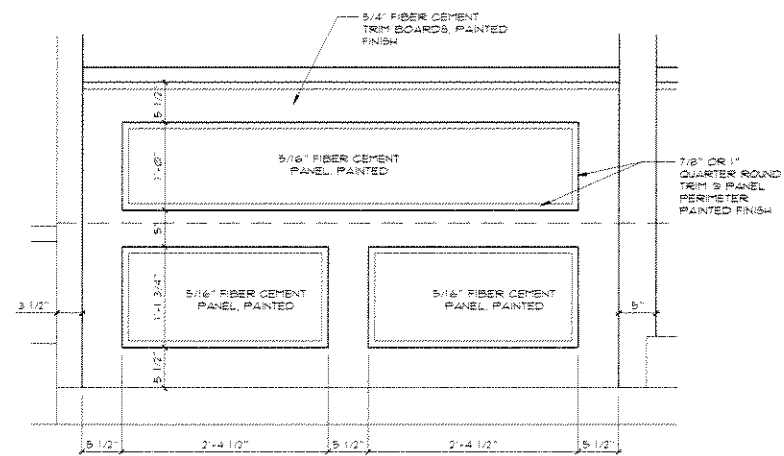
SCALE as noted

SHEET NO. A2.0

SHEET TITLE
New Exterior
Elevations



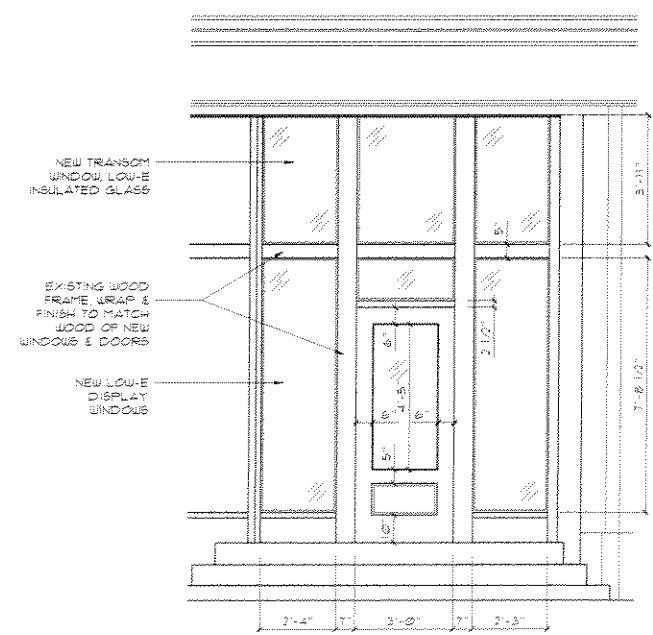
5 Bulkhead Panel Detail
A2.0 Scale: 1" = 1'-0"



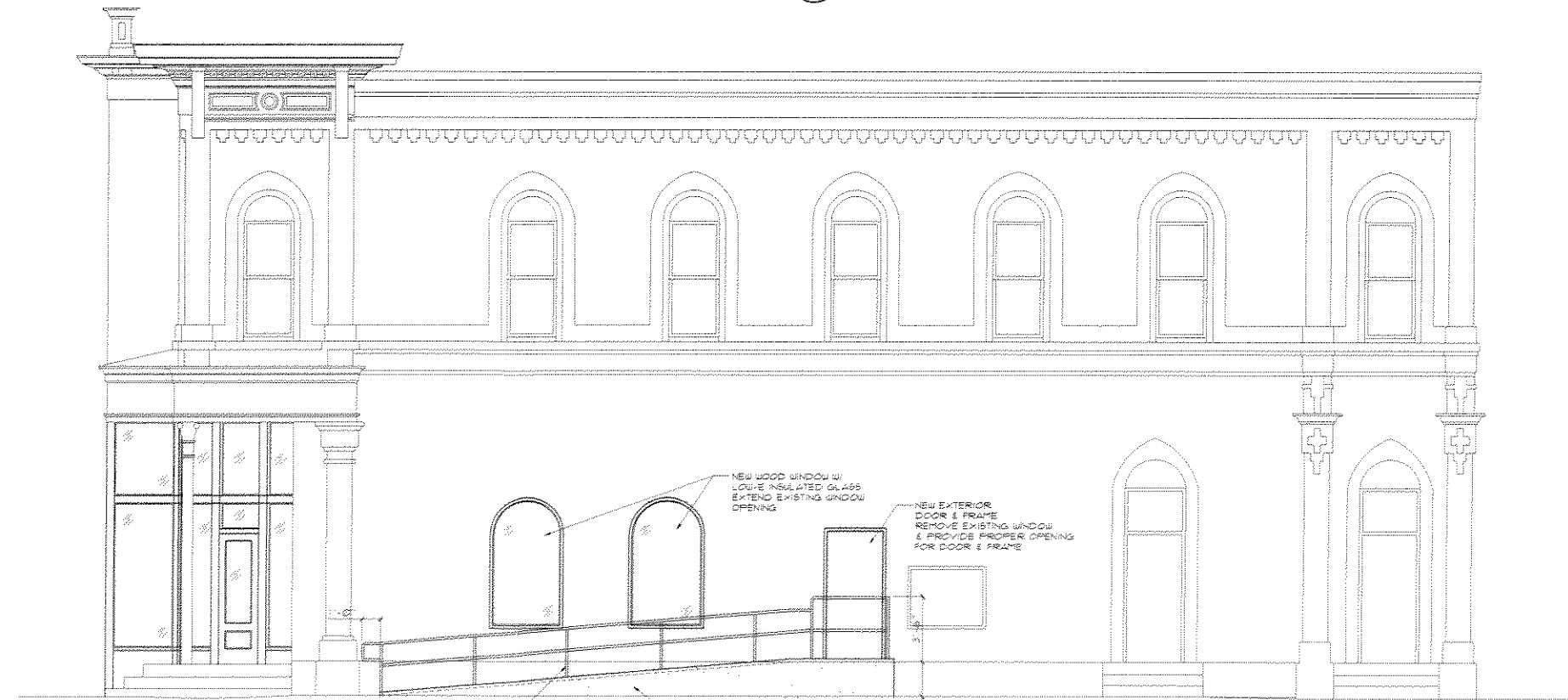
4 Bulkhead Panel Detail
A2.0 Scale: 1" = 1'-0"



2 New North Elevation
A2.0 Scale: 1/4" = 1'-0"



3 New Entrance Door
A2.0 Scale: 3/8" = 1'-0"



1 New West Elevation
A2.0 Scale: 1/4" = 1'-0"