



MILWAUKEE  
HISTORIC  
PRESERVATION  
COMMISSION

LIVING WITH HISTORY

## Certificate of Appropriateness

Milwaukee Historic Preservation Commission/200 E. Wells Street/Milwaukee, WI 53202/phone 414-286-5712/fax 414-286-3004

**Property**

2559 N. DOWNER AV. Downer Avenue Commercial Historic District

**Description of work**

The existing flag sign located at the corner of the building addressed at 2559 North Downer Avenue / 2524 East Webster Place will be modified/replaced to include lower panels that can be switched out when tenants within the 2nd and 3rd floor medical offices change. This design is intended to comply with the preservation guidelines and the planned development guidelines regarding signage in the district. In conjunction with this modification, the Lake Park Dental sign will be removed. This latter sign had recently been relocated from another location and re-installed on this building right below the flag sign. There had been no permit or Certificate of Appropriateness issued for this installation.

**Date issued**

3/31/2016

PTS ID 109732 COA Modify Flag sign remove one sign

In accordance with the provisions of Section 320-21 (11) and (12) of the Milwaukee Code of Ordinances, the Milwaukee Historic Preservation Commission has issued a certificate of appropriateness for the work listed above. The work was found to be consistent with preservation guidelines. The following conditions apply to this certificate of appropriateness:

The new panels on the flag sign will be non-illuminated, on a brushed aluminum substrate with graphics matching the original portion of the sign.

All work must be done in a craftsman-like manner, and must be completed within one year of the date this certificate was issued. Staff must approve any changes or additions to this certificate before work begins. Work that is not completed in accordance with this certificate may be subject to correction orders or citations. If you require technical assistance, please contact Carlen Hatala of the Historic Preservation staff as follows: Phone: (414) 286-5722 Fax: (414) 286-3004 E-mail: [carlen.hatala@milwaukee.gov](mailto:carlen.hatala@milwaukee.gov).

If permits are required, you are responsible for obtaining them from the Milwaukee Development Center. If you have questions about permit requirements, please consult the Development Center's web site, [www.milwaukee.gov/build](http://www.milwaukee.gov/build), or call (414) 286-8210.

*Carl Hatal*

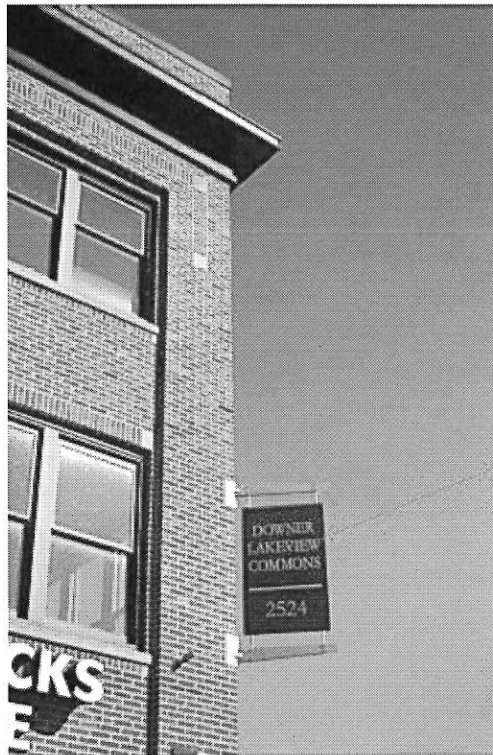
---

City of Milwaukee Historic Preservation Staff

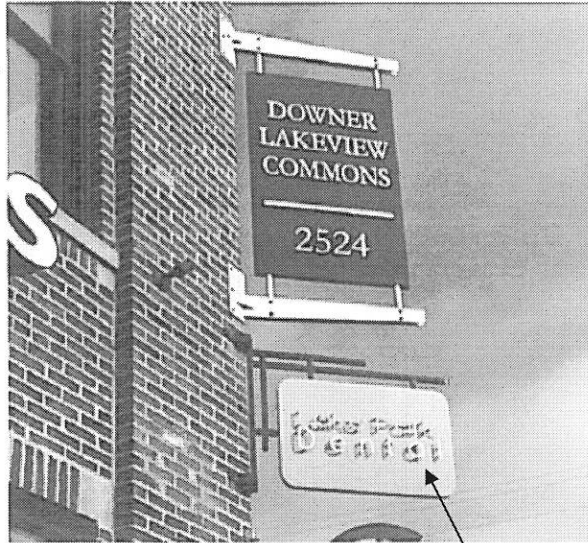
Copies to: Development Center, Ald. Nik Kovac, Contractor , Inspector Paul Wolfgramm (286-2590)



EXISTING FLAG SIGN  
TO BE REPLACED



EXISTING FLAG SIGN  
TO BE REPLACED



New Header & Tenant Panels for an Existing Double Face Blade Sign

A1

Non-Illuminated

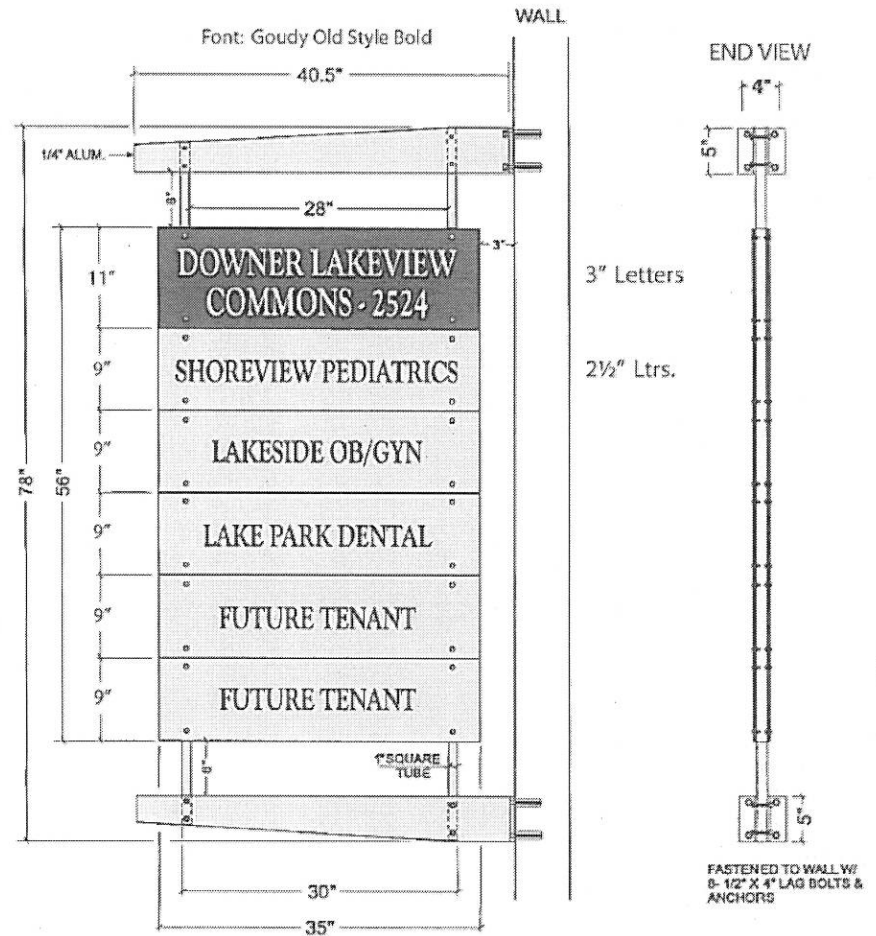
Substrate: Brushed Aluminum & Duranodic DiBond

Graphics: 3M Film Silver & Duranodic

Mounting Method: Standoffs w/ Caps

W/ T&A

HAPE, PROPORTION OF GRAPHICS AND LOGOS, AND SPELLING OF TRADEMARKS AND SERVICEMARKS



ATTENTION: PROOF ALL DRAWINGS CAREFULLY! IT IS THE RESPONSIBILITY OF THE CUSTOMER TO APPROVE COLOR, STYLE, SHAPE, PF

This sign will be removed