

Review of Milwaukee Water Works Facilities Safety Audits January – March 2025

Ken Alderden

Risk Control Consultant

Agenda

- Scope of the audit
- Content and explanation of report metrics
- Overview of the key findings

Scope

- Linnwood Treatment Plant
 - January 8 & 9
- Howard Treatment Plant
 - January 28
- Meter Services
 - March 10
- Headquarters (water works portion)
 - March 25

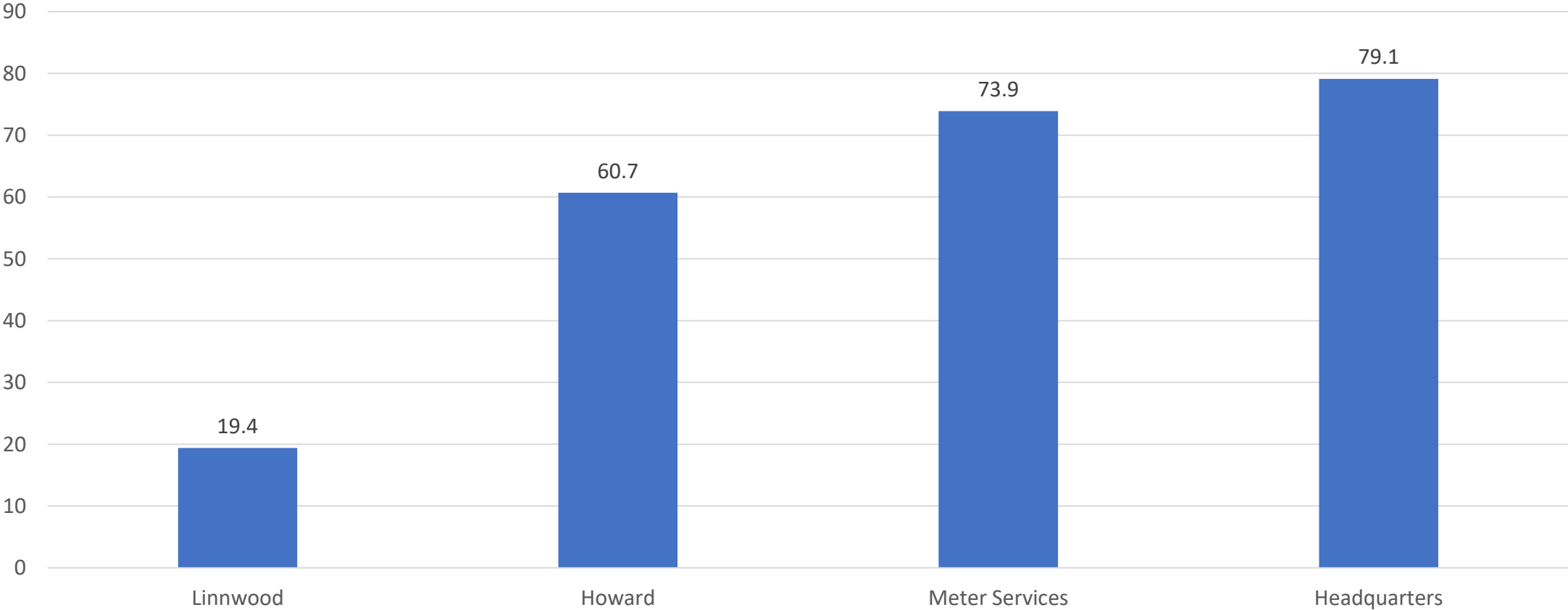
Did not include:

- Any remote field operations
- Attending training provided to employees
- Any work outside 1st shift
- Every task performed within the four facilities

Audit components

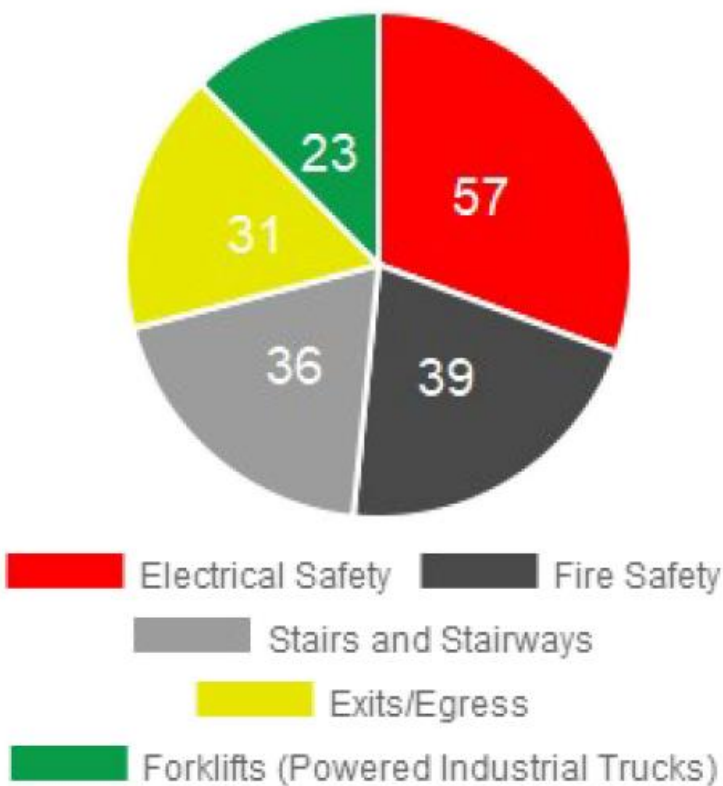
- Q & A with management
- Physical hazard assessments of the facilities
- Q & A with random employees to gauge knowledge of safety exposures and controls
- Safety program and training content review
- Findings were compared to OSHA regulations and industry best practices

Safety Score

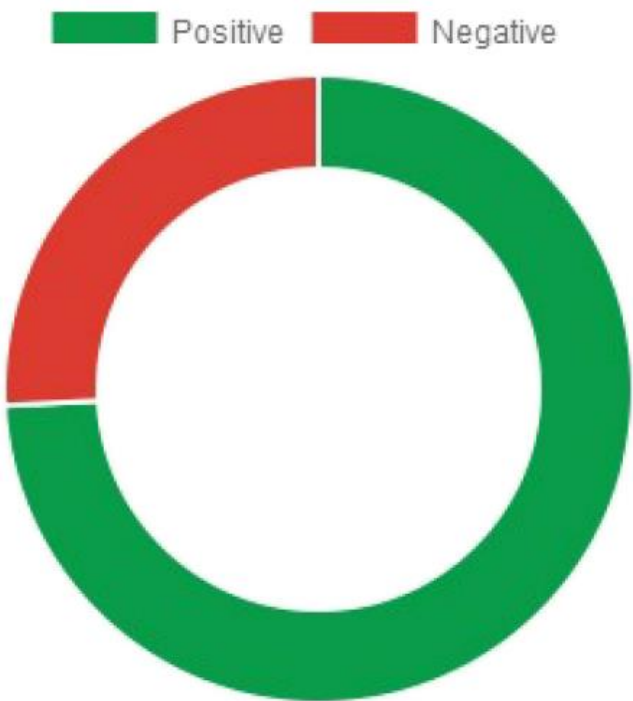


127 Pages With 670 Total Observations Reported

Top 5 Positive Categories

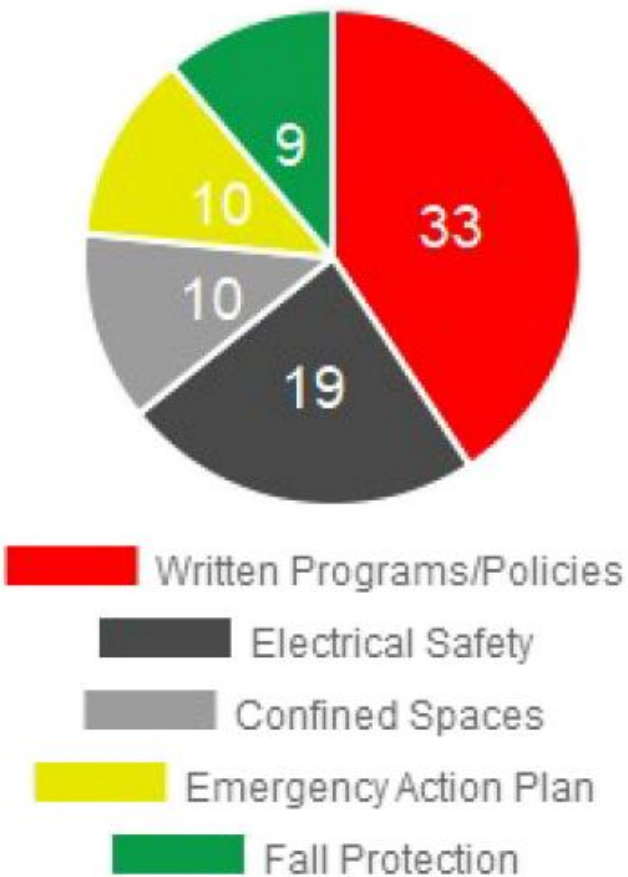


Observations



Report Score:74%

Top 5 Negative Categories



Confined Space Entry

- Permit system in place
- 4 gas meters were being used
- Entrants unhook from the rescue winch
- Attendant was not directly outside the entry point at all times
- Entrants were not involved in the lockout/tagout process



Fall Protection

- >4' Requires fall protection



Fall Protection Issues

- Some personal fall arrest equipment was being used improperly



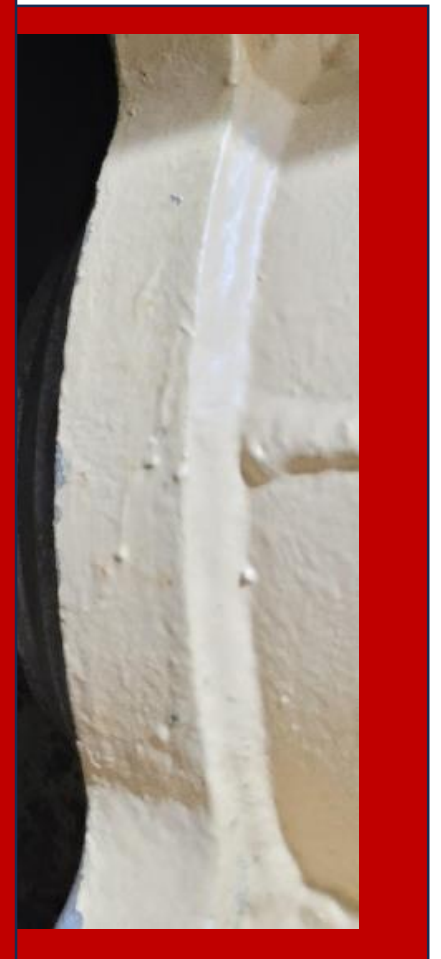
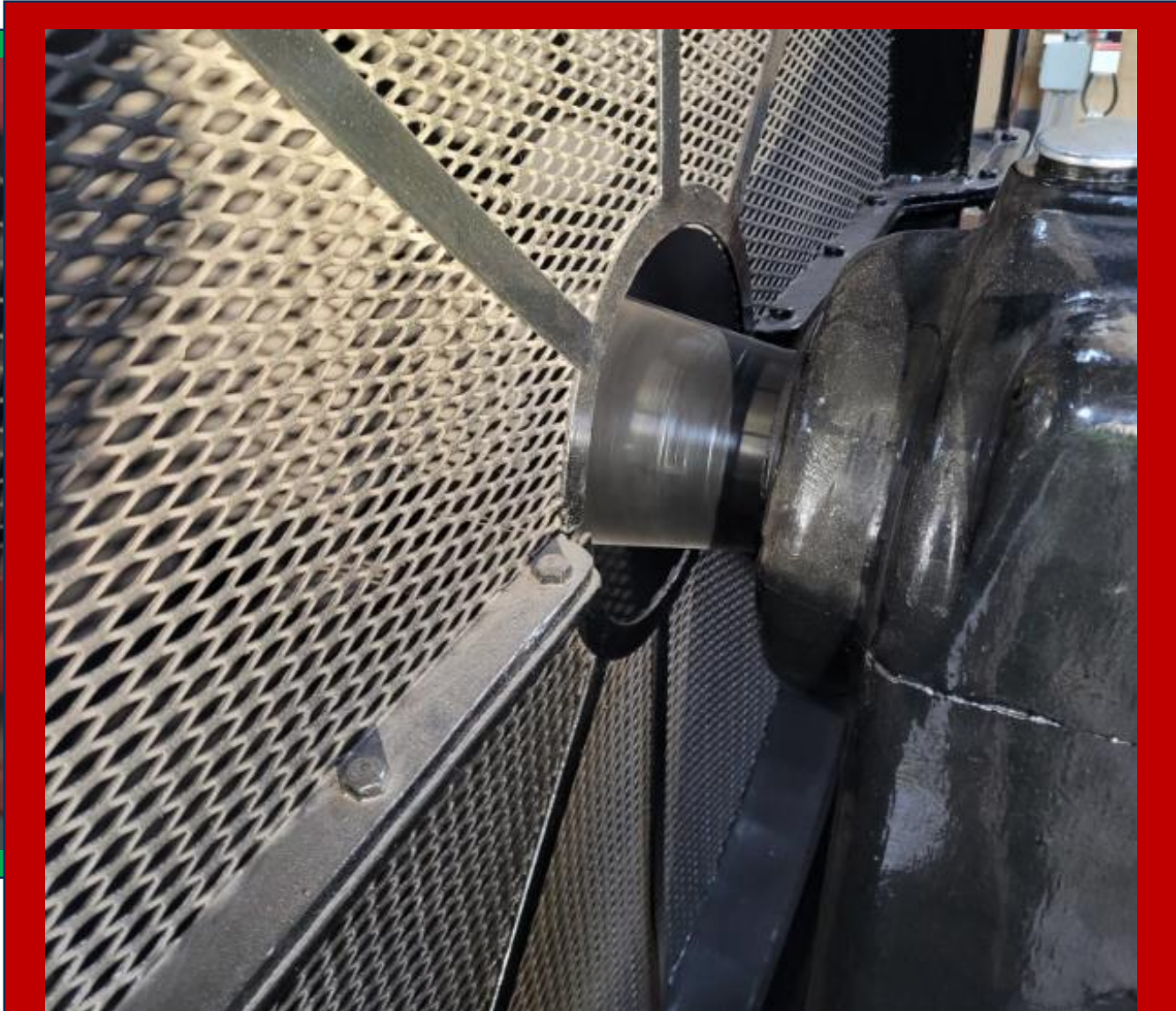
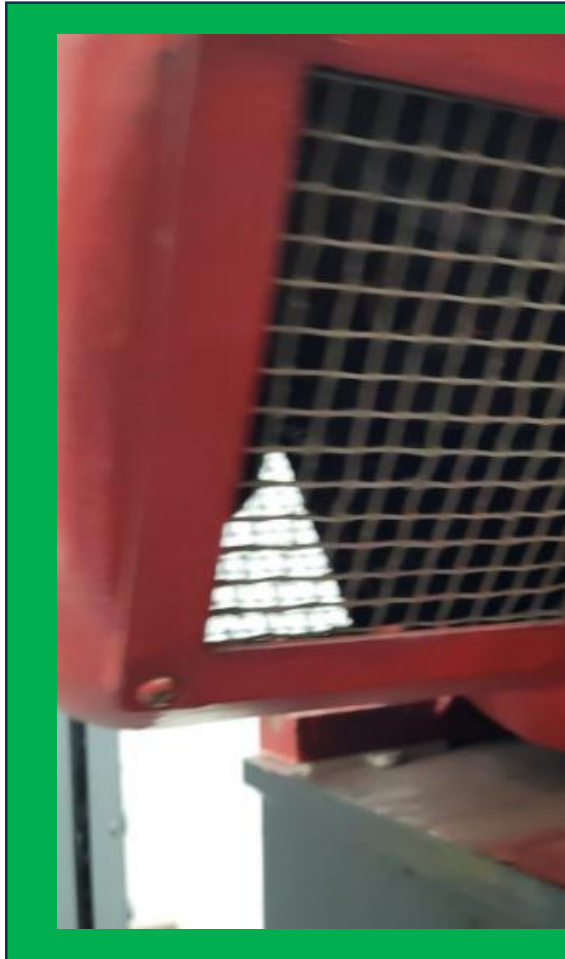
- Linnwood Filter Beds



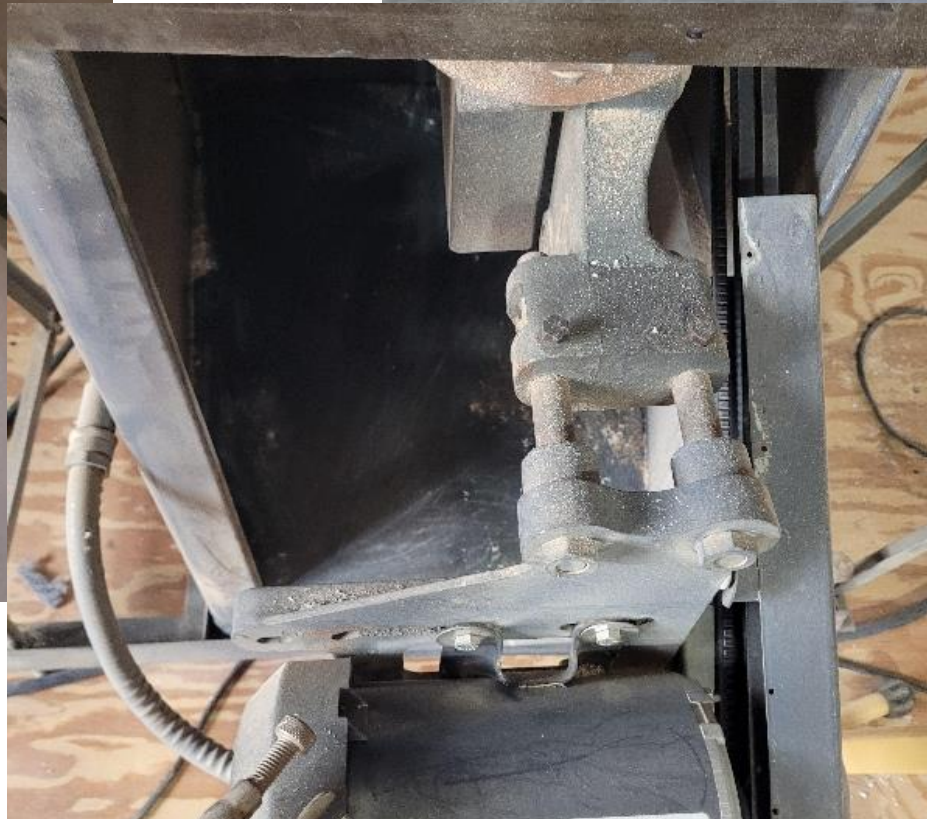
- Howard Filter Beds



Machine Guarding



Machine Guarding





Questions?