

COORDINATES AND BEARINGS SHOWN ON THIS PLAT ARE REFERENCED TO THE WISCONSIN COUNTY COORDINATE SYSTEM, MILWAUKEE COUNTY ZONE, NAD83 (2007) ADJUSTMENT. THE COORDINATES SHOWN ARE GRID COORDINATES AND ARE TO BE USED AS GRID OR GROUND VALUES ON THIS PLAT.

RIGHT-OF-WAY MONUMENTS ARE TYPE 2 (TYPICAL 3/4" REBAR) AND WILL BE PLACED PRIOR TO THE COMPLETION OF THE PROJECT BY WISCONSIN DOT SOUTHEAST REGION SURVEY.

RIGHT-OF-WAY BOUNDARIES ARE DEFINED WITH COURSES OF THE PERIMETER OF THE HIGHWAY LANDS REFERENCED TO THE U.S. PUBLIC LAND SURVEY SYSTEM OR OTHER "SURVEYS OF PUBLIC RECORD".

FOR THE LATEST ACCESS / DRIVEWAY INFORMATION, CONTACT THE PLANNING UNIT OF THE WISCONSIN DEPARTMENT OF TRANSPORTATION OFFICE OF WAUKESHA.

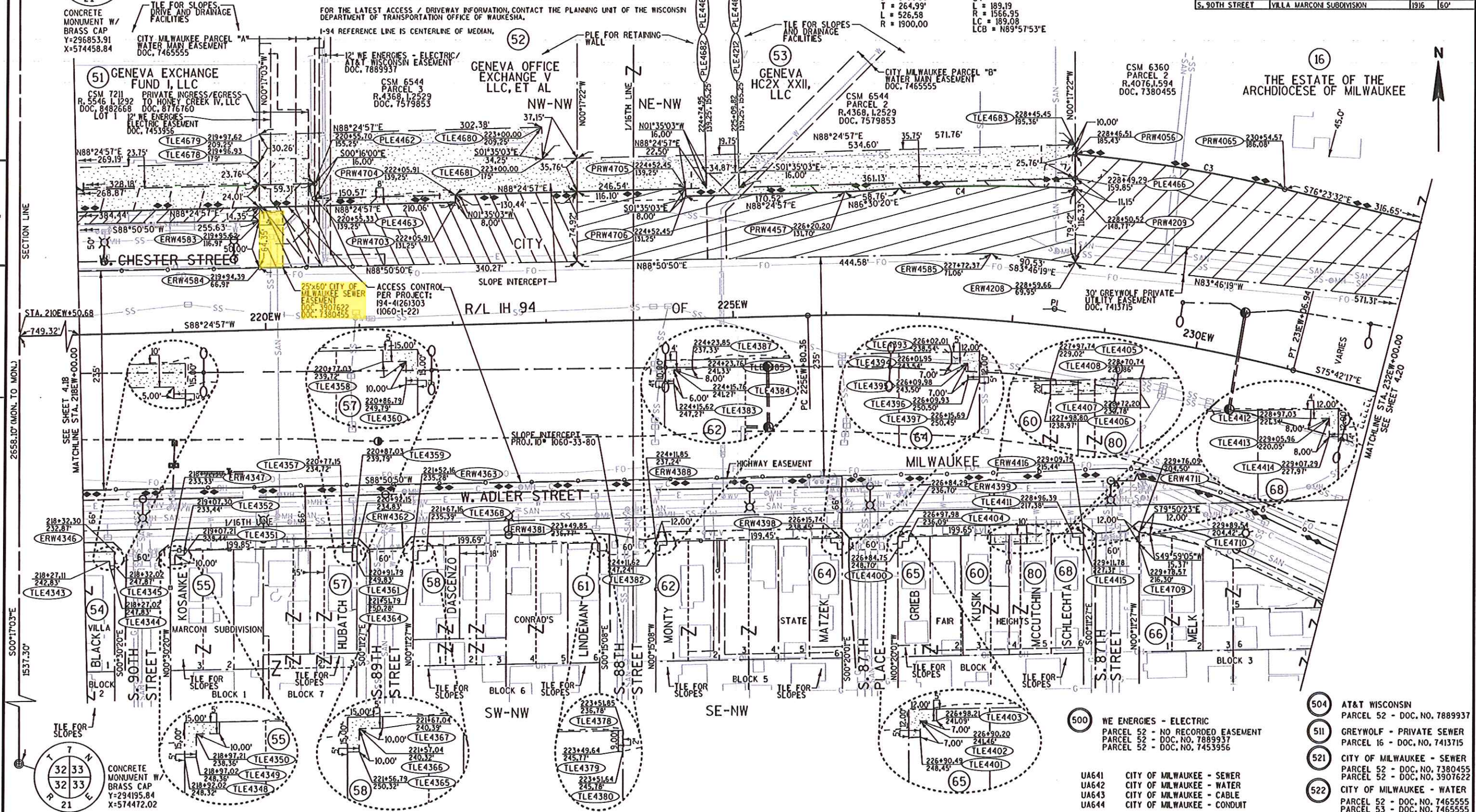
I-94 REFERENCE LINE IS CENTERLINE OF MEDIAN.

RL IH-94  
PI STA. 228+45.35  
Y = 295782.73  
X = 576258.38  
DELTA = 15°52'45"  
D = 3°00'56"  
T = 264.99'  
L = 526.58  
R = 1900.00

C3  
L = 228.49  
R = 1561.00  
LC = 228.29  
LCB = S80°35'08"E

C4  
L = 189.19  
R = 1566.95  
LC = 189.08  
LCB = N89°57'53"E

HWY	BASIS OF EXISTING R/W	YEAR	WIDTH
S. 86TH STREET	CONRAD'S STATE FAIR HEIGHTS	1913	60'
S. 87TH STREET	CONRAD'S STATE FAIR HEIGHTS	1913	60'
S. 88TH STREET	CONRAD'S STATE FAIR HEIGHTS	1913	60'
S. 89TH STREET	CONRAD'S STATE FAIR HEIGHTS	1913	60'
W. ADLER STREET	CONRAD'S STATE FAIR HEIGHTS	1913	33' SOUTH
W. ADLER STREET	194-41261303	1960	VARIES
S. 90TH STREET	VILLA MARCONI SUBDIVISION	1916	60'



CONCRETE MONUMENT W/ BRASS CAP  
Y=296853.91  
X=574458.84

TILE FOR SLOPES, DRIVE AND DRAINAGE FACILITIES  
CITY MILWAUKEE PARCEL "A" WATER MAIN EASEMENT DOC. 7465555

TILE FOR SLOPES AND DRAINAGE FACILITIES

CONCRETE MONUMENT W/ BRASS CAP  
Y=294195.84  
X=574472.02

500 WE ENERGIES - ELECTRIC  
PARCEL 52 - NO RECORDED EASEMENT  
PARCEL 52 - DOC. NO. 7889937  
PARCEL 52 - DOC. NO. 7453956

UA641 CITY OF MILWAUKEE - SEWER  
UA642 CITY OF MILWAUKEE - WATER  
UA643 CITY OF MILWAUKEE - CABLE  
UA644 CITY OF MILWAUKEE - CONDUIT

- 504 AT&T WISCONSIN PARCEL 52 - DOC. NO. 7889937
- 511 GREYWOLF - PRIVATE SEWER PARCEL 16 - DOC. NO. 7413715
- 521 CITY OF MILWAUKEE - SEWER PARCEL 52 - DOC. NO. 7380455  
PARCEL 52 - DOC. NO. 3907622
- 522 CITY OF MILWAUKEE - WATER PARCEL 52 - DOC. NO. 7465555  
PARCEL 53 - DOC. NO. 7465555

REVISION DATE DEC. 17, 2012 APR. 17, 2013 AUG. 29, 2013	JAN. 17, 2014 APRIL 24, 2014	DATE SEPT 28, 2012	SCALE, FEET 0 50 100	HWY: IH 94 COUNTY: MILWAUKEE	STATE R/W PROJECT NUMBER 1060-33-24 CONSTRUCTION PROJECT NUMBER 1060-33-81	PLAT SHEET 4.19 PS&E SHEET	E
------------------------------------------------------------------	---------------------------------	-----------------------	-------------------------	---------------------------------	-------------------------------------------------------------------------------	-------------------------------	---