



Elevation - East

3/32" = 1'-0"

KEYED EXTERIOR ELEVATIONS	
TAG #	DESCRIPTION

- 1 DECORATIVE PRECAST WALL
- 2 WHITE BRICK
- 3 LIGHT COLORED FIBER CEMENT PANEL
- 4 DARK COLORED FIBER CEMENT PANEL
- 5 WHITE COLORED FIBER CEMENT PANEL
- 6 WOOD LOOK FIBER CEMENT PANEL



Elevation - North

3/32" = 1'-0"

KEYED EXTERIOR ELEVATIONS	
TAG #	DESCRIPTION

- 1 DECORATIVE PRECAST WALL
- 2 WHITE BRICK
- 3 LIGHT COLORED FIBER CEMENT PANEL
- 4 DARK COLORED FIBER CEMENT PANEL
- 5 WHITE COLORED FIBER CEMENT PANEL
- 6 WOOD LOOK FIBER CEMENT PANEL





Elevation - West

3/32" = 1'-0"

KEYED EXTERIOR ELEVATIONS	
TAG #	DESCRIPTION

- 1 DECORATIVE PRECAST WALL
- 2 WHITE BRICK
- 3 LIGHT COLORED FIBER CEMENT PANEL
- 4 DARK COLORED FIBER CEMENT PANEL
- 5 WHITE COLORED FIBER CEMENT PANEL
- 6 WOOD LOOK FIBER CEMENT PANEL

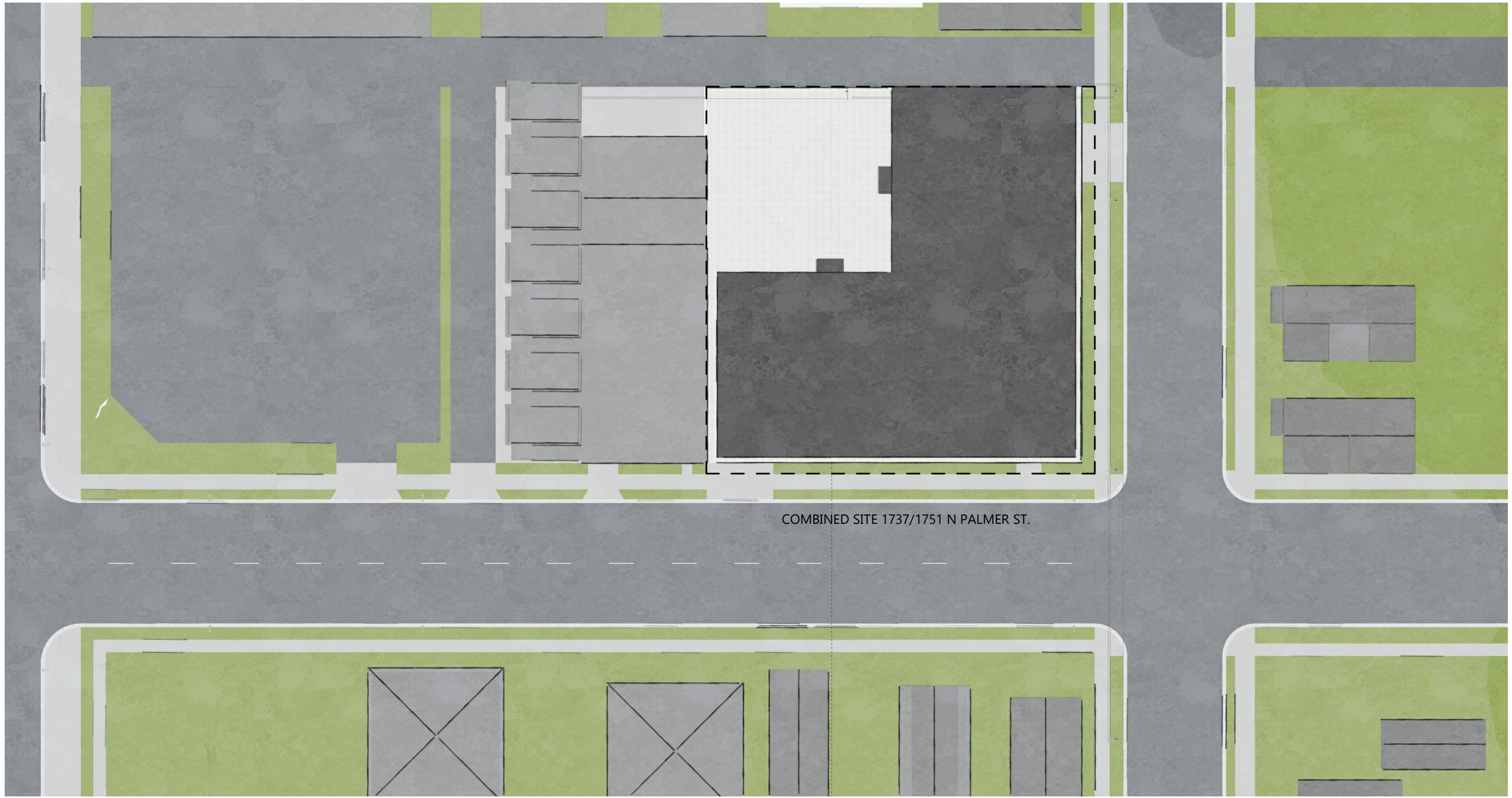


Elevation - South

3/32" = 1'-0"

KEYED EXTERIOR ELEVATIONS	
TAG #	DESCRIPTION

- 1 DECORATIVE PRECAST WALL
- 2 WHITE BRICK
- 3 LIGHT COLORED FIBER CEMENT PANEL
- 4 DARK COLORED FIBER CEMENT PANEL
- 5 WHITE COLORED FIBER CEMENT PANEL
- 6 WOOD LOOK FIBER CEMENT PANEL



COMBINED SITE 1737/1751 N PALMER ST.

Site Plan

1" = 40'-0"

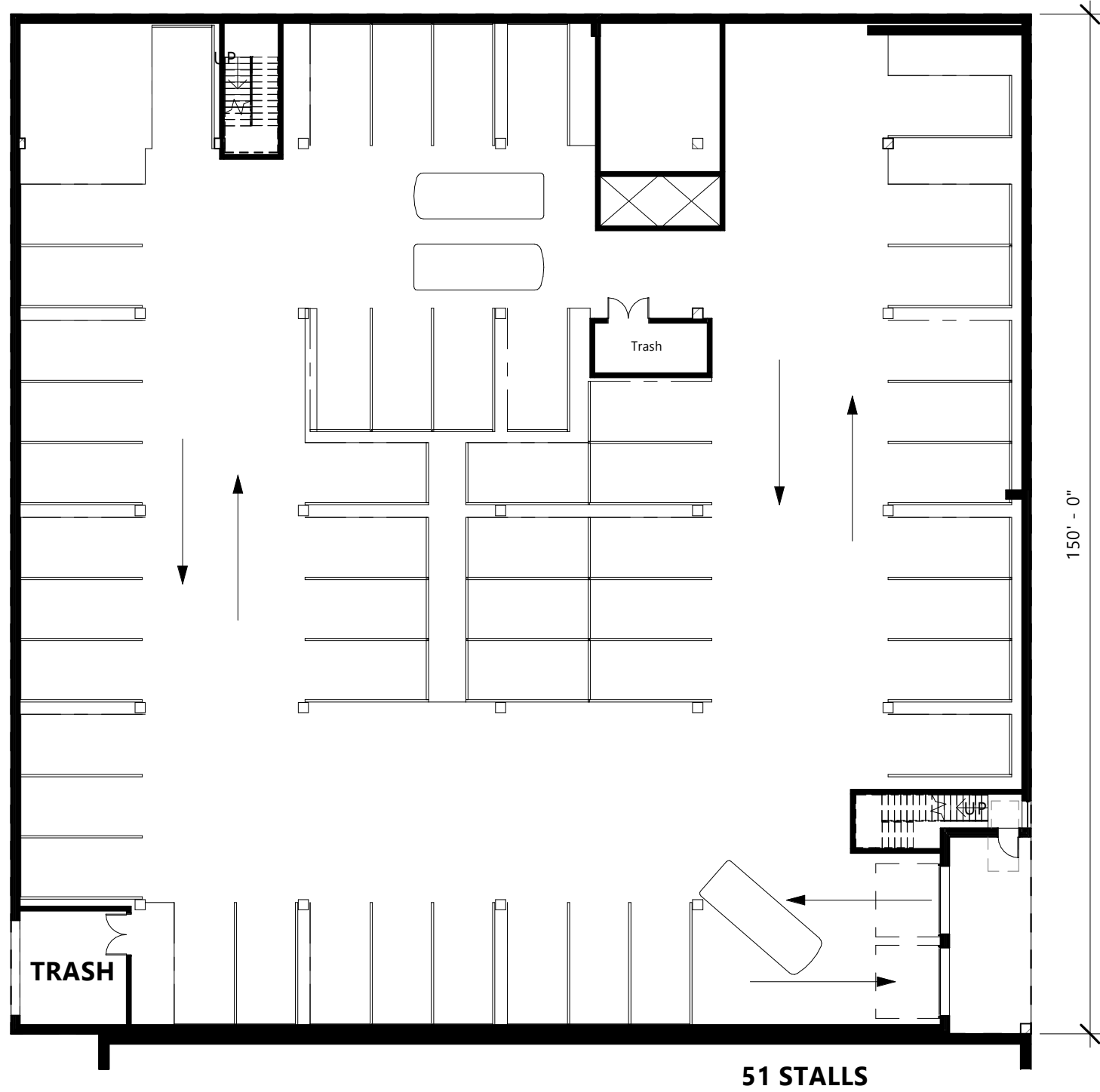




Perspective - Southeast



Perspective - Northeast

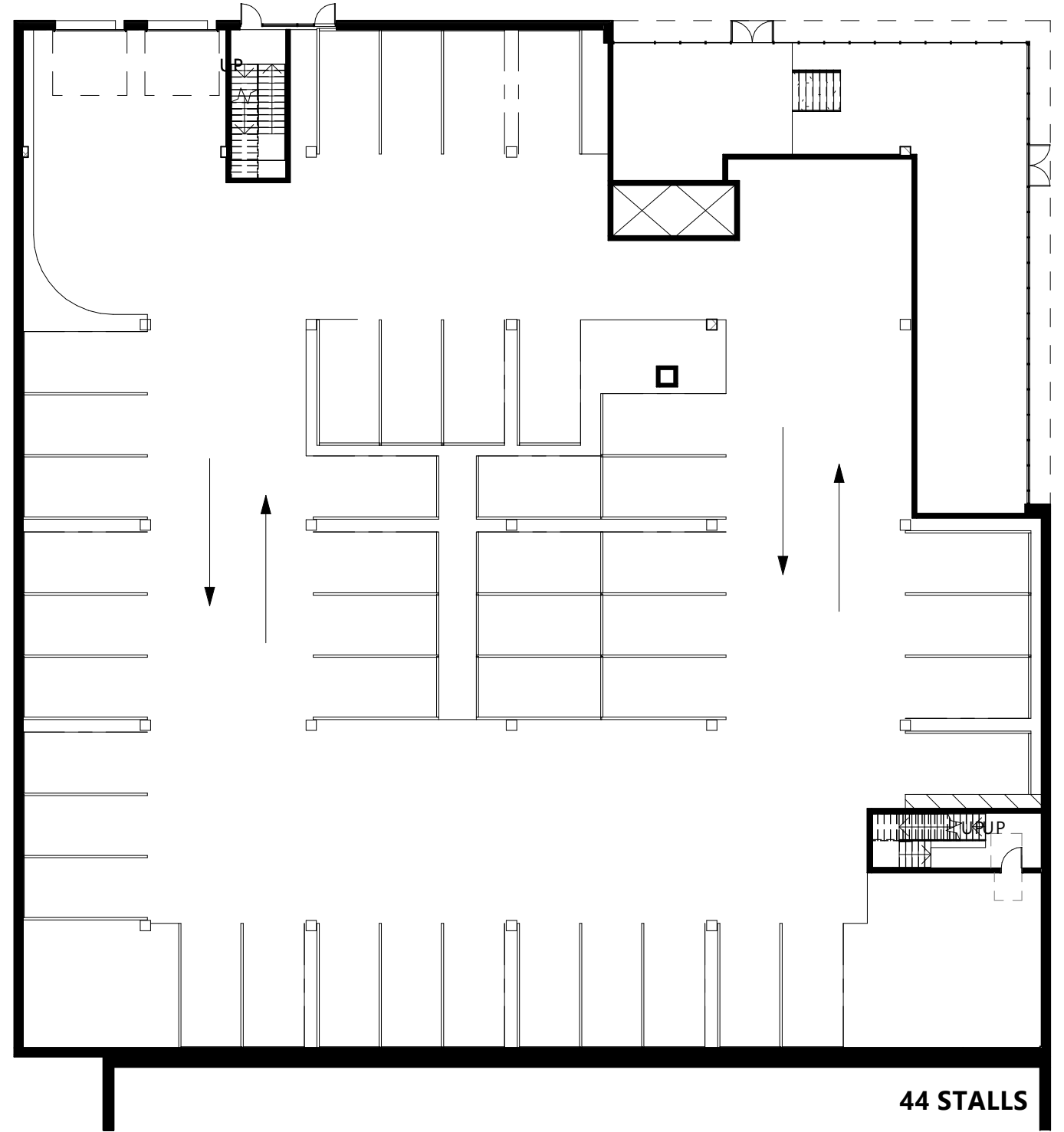


150' - 0"



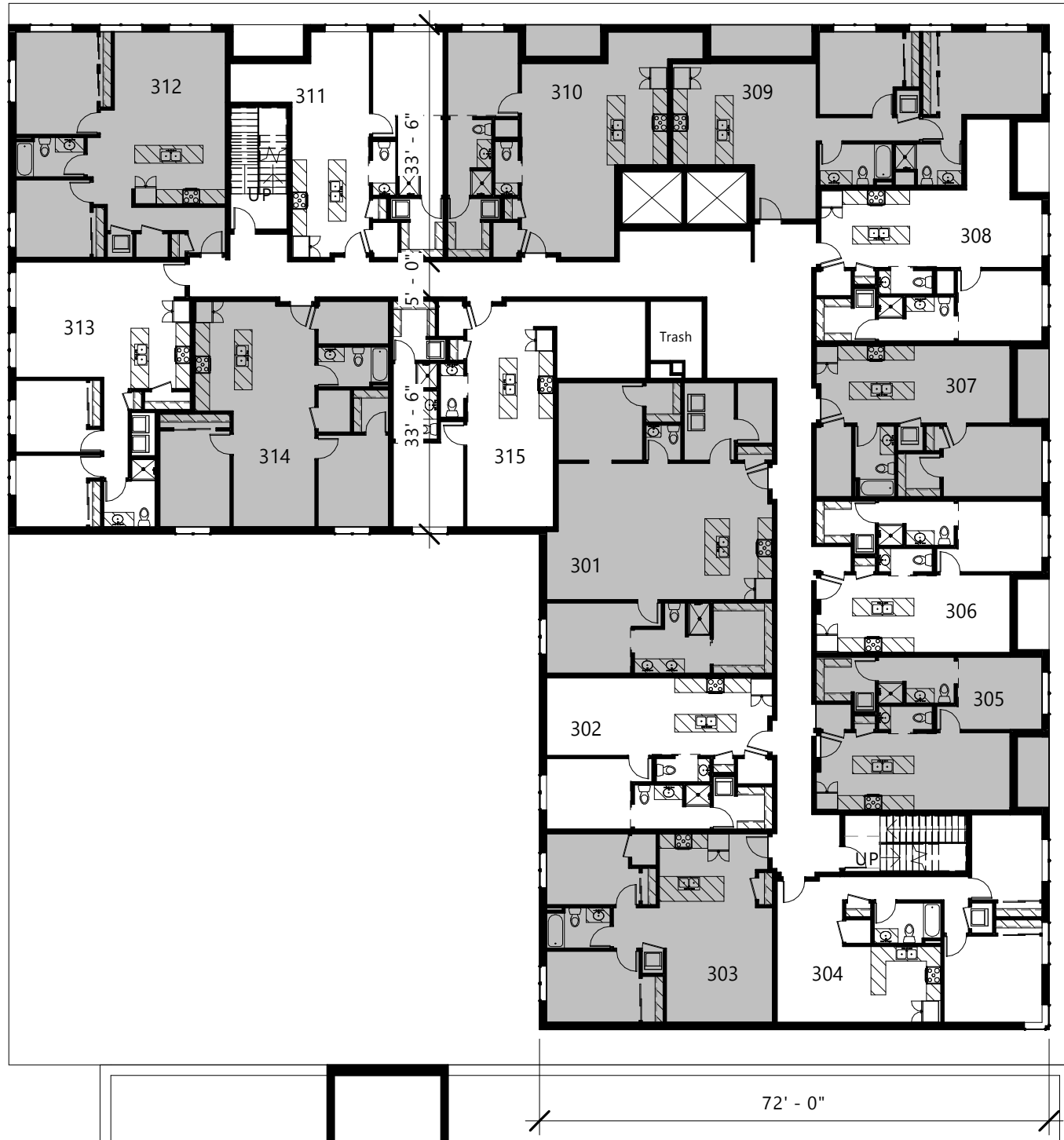
LEVEL 1 - FLOOR PLAN

3/64" = 1'-0"



LEVEL 2 - FLOOR PLAN

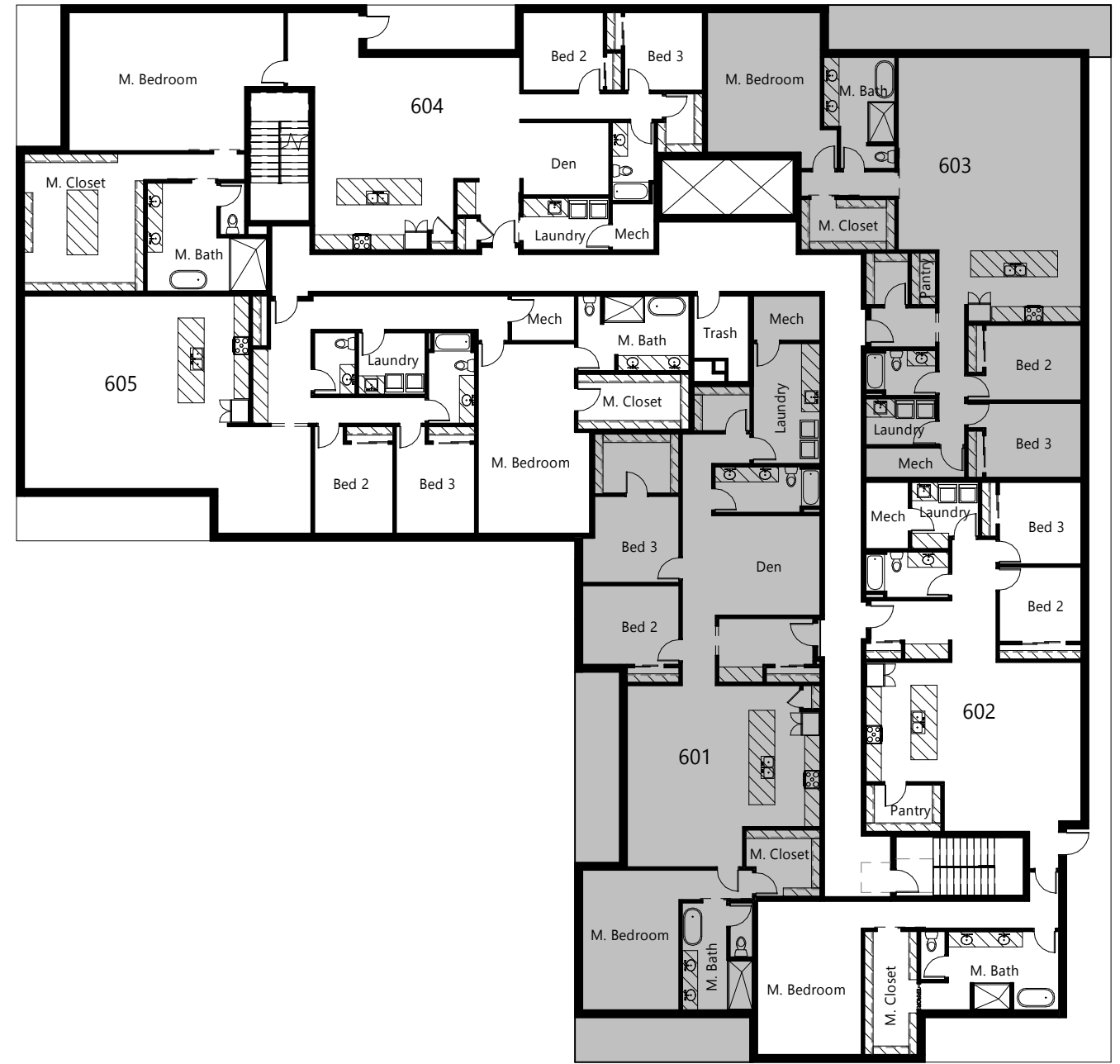
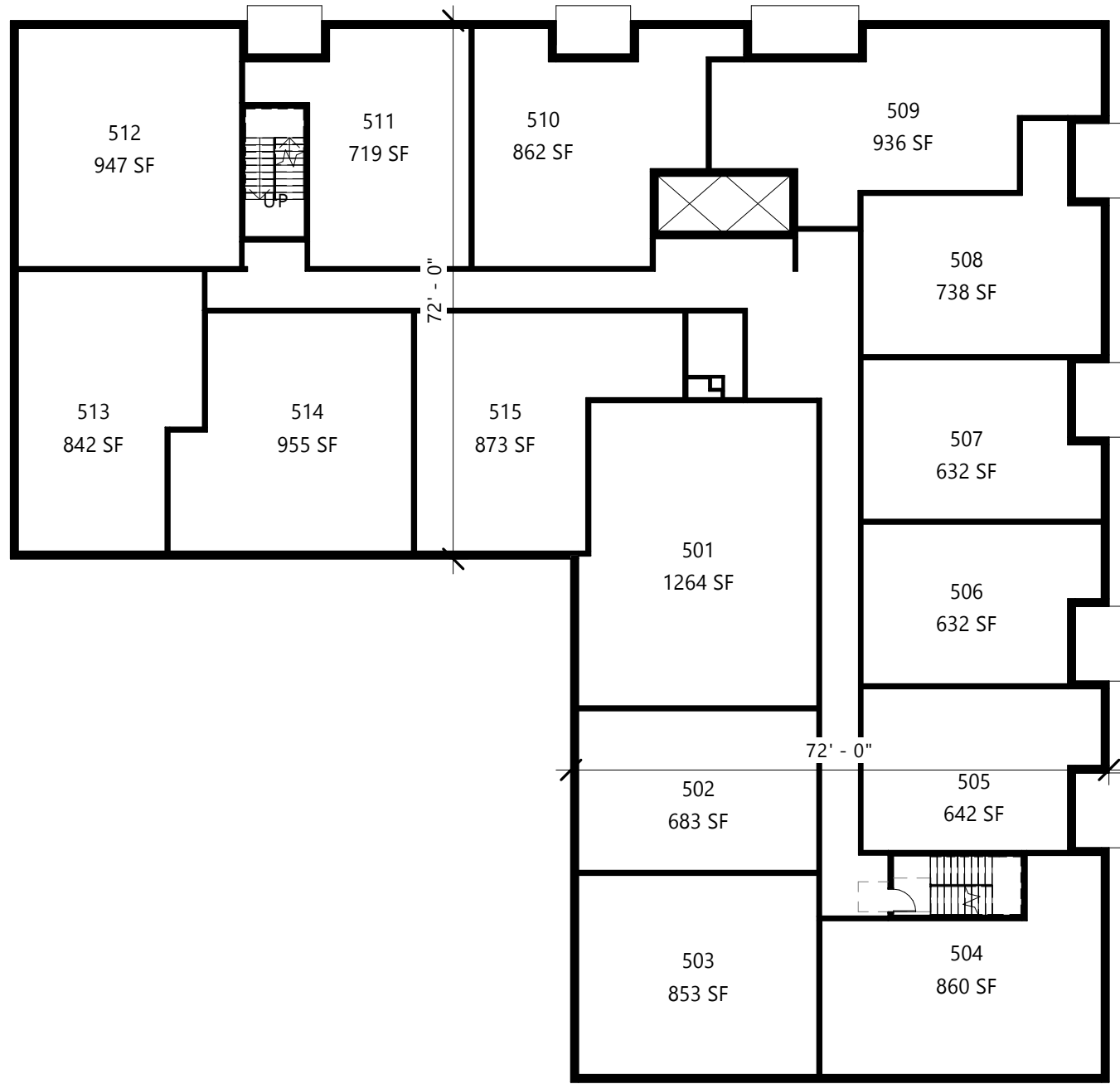
3/64" = 1'-0"



LEVEL 3



LEVEL 4



 LEVEL 5

LEVEL 6



Existing Site Images