



Certificate of Appropriateness

Milwaukee Historic Preservation Commission/200 E. Wells Street/Milwaukee, WI 53202/phone 414-286-5712/fax 414-286-3004

Property 1033 N. OLD WORLD THIRD STREET Old World Third Street Historic District
Description of work Applicant proposes to install a vertical projecting cabinet sign in the center of the front facade between the second and third stories for Oak Barrel Public House. The sign will measure 15 feet tall by 38 inches wide by 12 inches deep. Dimensions might change as required by code and can be reduced in size but not enlarged. Push through letters will stand out from the aluminum face.
Date issued 1/12/2018 PTS ID 114445 COA

In accordance with the provisions of Section 320-21 (11) and (12) of the Milwaukee Code of Ordinances, the Milwaukee Historic Preservation Commission has issued a certificate of appropriateness for the work listed above. The work was found to be consistent with preservation guidelines. The following conditions apply to this certificate of appropriateness:

The sign will be built as submitted or have smaller dimensions if required by code.

The sign will be supported by 3 or 4 square aluminum tubes with aluminum mounting plates. The plates are to be fastened to the masonry through the mortar joints and not through the brick face. No plates are to be fastened through the corbelled brick and stone details of the pilaster to which they are mounted.

Any needed guy wires, chains or rod supports need to be reviewed with HPC staff before installation can proceed.

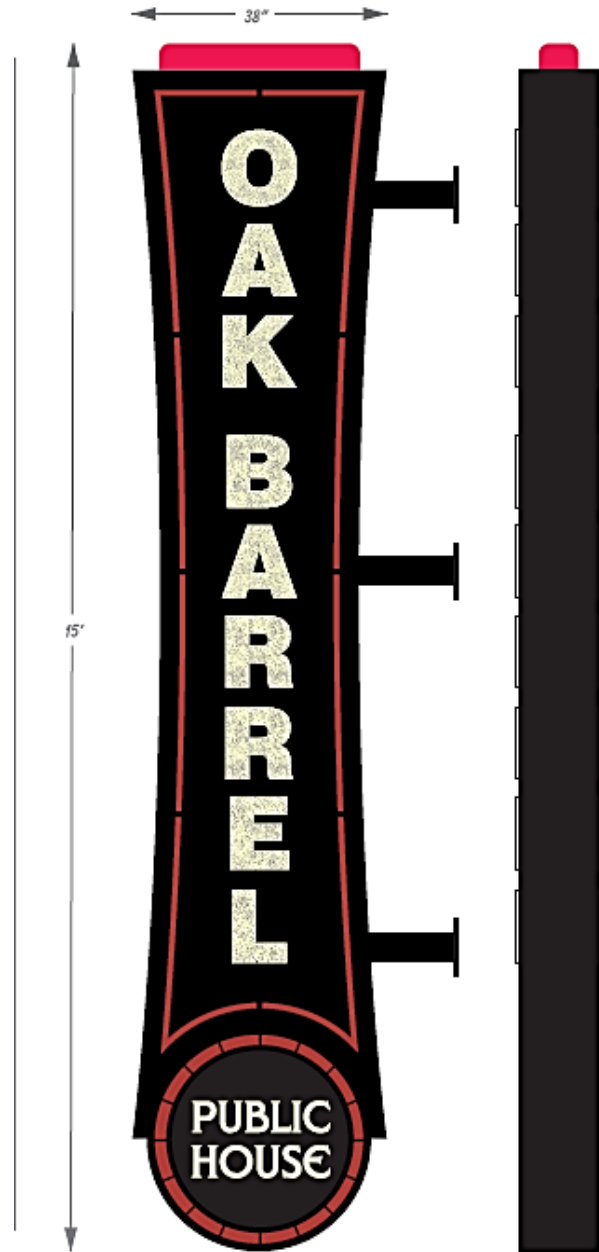
All work must be done in a craftsman-like manner, and must be completed within one year of the date this certificate was issued. Staff must approve any changes or additions to this certificate before work begins. Work that is not completed in accordance with this certificate may be subject to correction orders or citations. If you require technical assistance, please contact Carlen Hatala of the Historic Preservation staff as follows: Phone: (414) 286-5722 Fax: (414) 286-3004 E-mail: carlen.hatala@milwaukee.gov.

If permits are required, you are responsible for obtaining them from the Milwaukee Development Center. If you have questions about permit requirements, please consult the Development Center's web site, www.milwaukee.gov/build, or call (414) 286-8210.



City of Milwaukee Historic Preservation Staff

Copies to: Development Center, Ald. Robert Bauman, Contractor , Inspector Dave Pedersen (286-2540)



Specifications

One (1) Double Sided 15' high x 38" wide x 12" deep, all aluminum Sign Cabinet. Constructed with a welded square aluminum tubing frame, that is skinned with .125 (1/8") thick CNC routed sheet aluminum.

The Sign Cabinet is Painted with Matthew Polyurethane MAP N923SP Black.

Top Mounted Vacuum Formed internally Illuminated LED Translucent Red Lens.

Push-Thru Clear Acrylic Letter Faces with 3M Translucent 3630-005 Ivory Vinyl that has been printed with a distressed pattern (as per customer art) and Matte Laminated for durability. Average letter size is 11" x 11".

CNC Routed Border is backed with Customer Spec Printed Translucent Vinyl covered Translucent White Polycarbonate.

Lower inner CNC routed Circle Design is backed with Translucent Polycarbonate that has been covered with Printed and Matte Laminated Graphics.

Lower outer CNC routed Circle Border is backed with Customer Spec Printed Translucent Vinyl covered Translucent White Polycarbonate.

Three (3) or Four (4) 4"x4" square aluminum tube supports with 8"x8"x1/4" aluminum mounting plates.

Corner Attachment Hardware on Sign Cabinet for guy wires, chain, or rod supports.

Specific attachment to be determined at time of install by the installer.

Electrical Hookup by Licensed Electrician of Customers choosing.

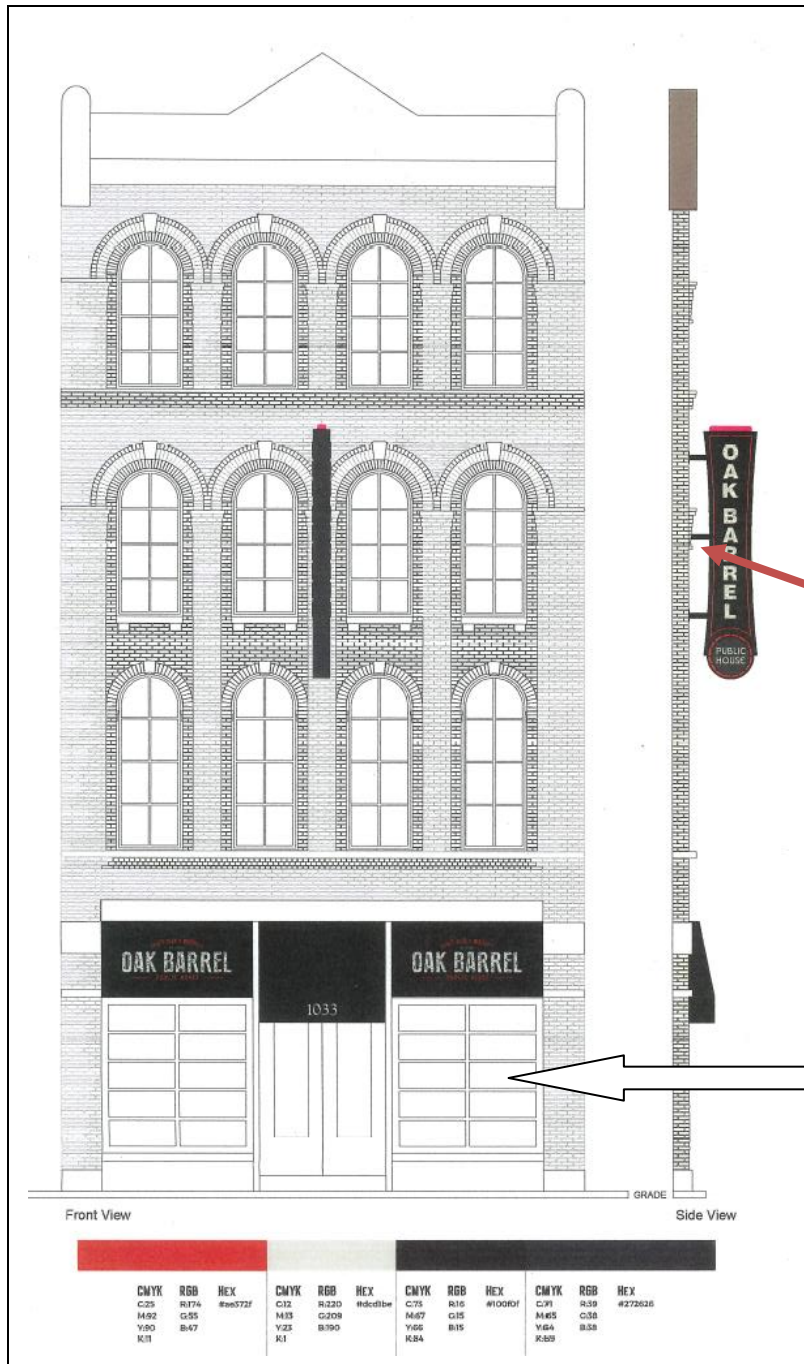
Sign and LED lighting is warranted for 1 year from time of installation.

Sign Permit and C.O.A. to be secured by National Sign & Design.

Color Specifications

CMYK	RGB	HEX	CMYK	RGB	HEX	CMYK	RGB	HEX	CMYK	RGB	HEX
C20	R20	#A52A2A	C10	R220	#A52A2A	C70	R10	#800000	C70	R10	#800000
M10	G10	#A52A2A	M10	G10	#A52A2A	M10	G10	#A52A2A	M10	G10	#A52A2A
Y10	B10	#A52A2A	Y10	B10	#A52A2A	Y10	B10	#A52A2A	Y10	B10	#A52A2A
K1			K1			K1			K1		

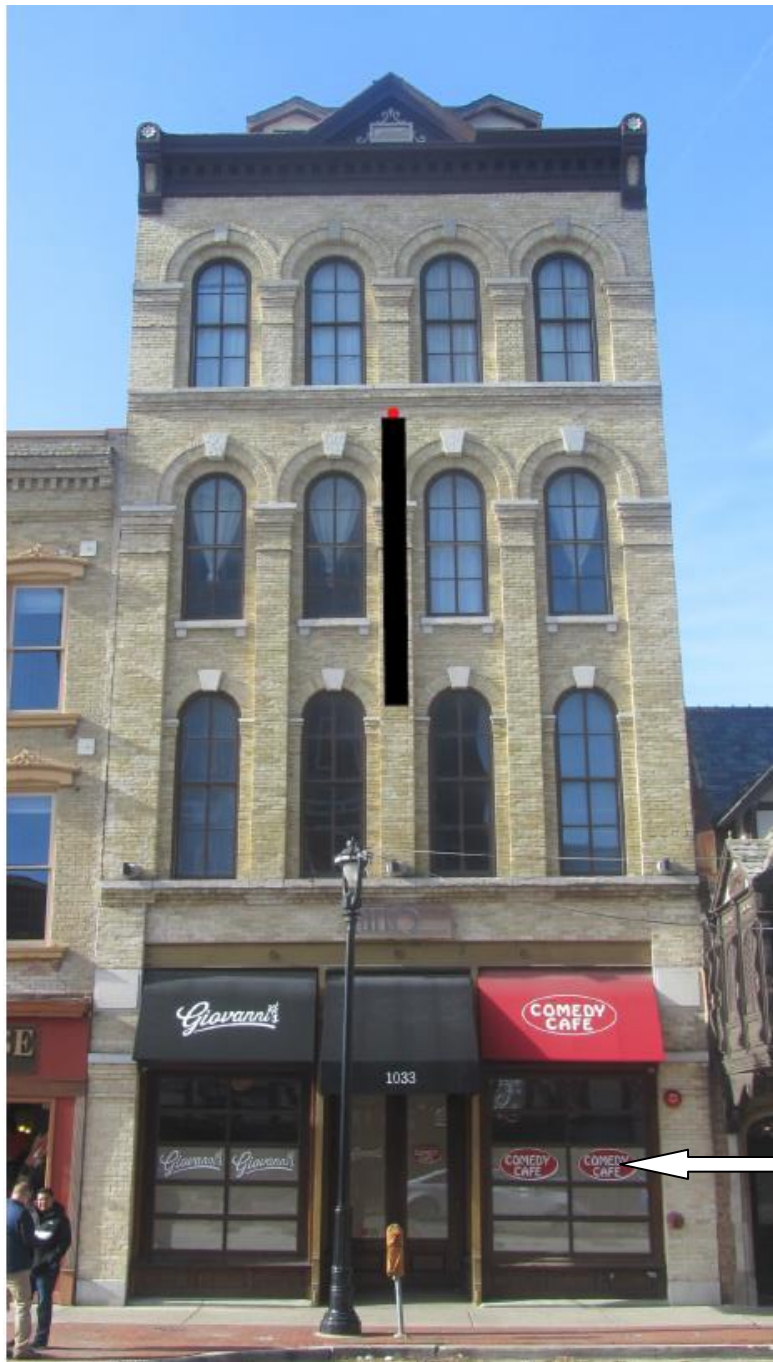
This artwork is the sole property of National Sign & Design. Any ideas and concepts contained in this original drawing may not be reproduced in whole or part without written permission. All colors are representational only, for actual color matches, refer to specific material samples and/or color charts. All Logos are the registered trademarks of their respective companies and are reproduced here with their permission. © 2017 copyright.



Location of the sign on the building façade.

Installation shall not damage the masonry (brick and stone) of the pilaster to which the sign will be mounted

Note: Storefront windows have been recently changed (without a Certificate of Appropriateness) from their previously restored condition completed in 2008. This will be addressed separately.



How the vertical sign will look on the façade.

Note: Storefront windows have been recently changed (without a Certificate of Appropriateness) from their previously restored condition completed in 2008. This will be addressed separately.