

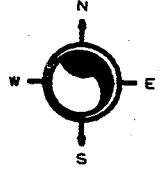
SW 17-7-22

ATLAS P. 323

323

323-22

SCALE 1" = 80'



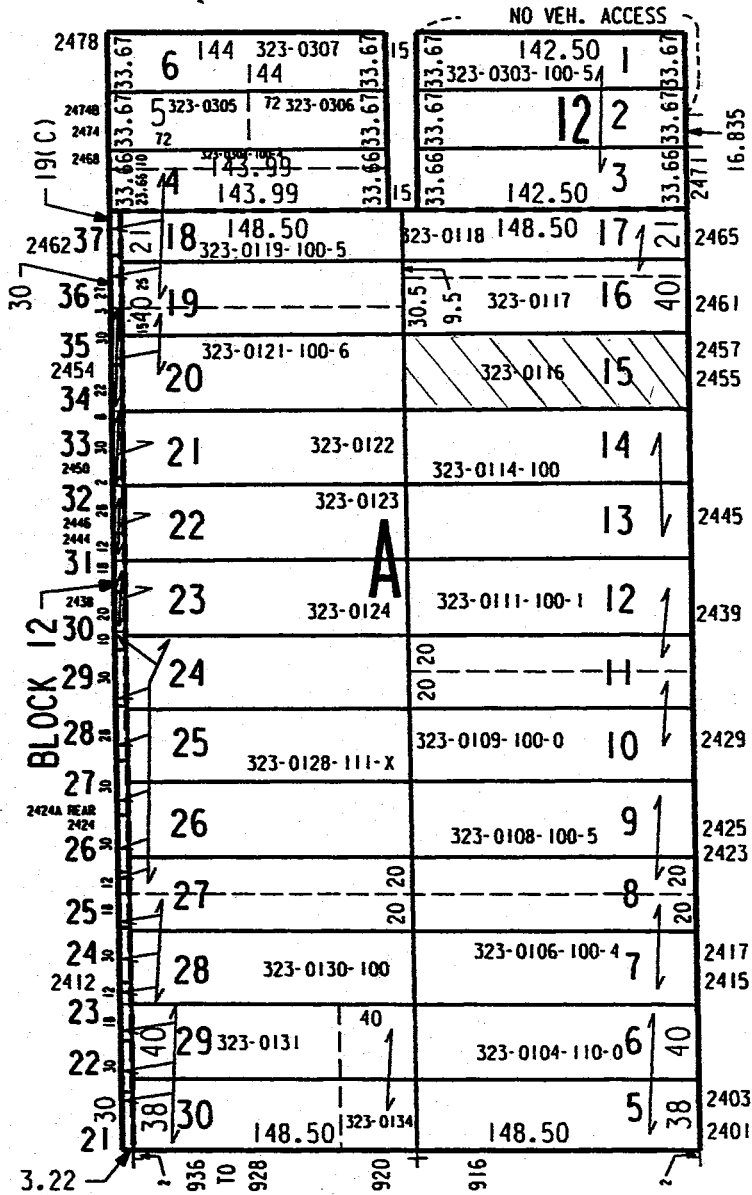
# LAMBRECHT'S SUBD W WRIGHT ST

SUBD OF PART OF W. 60.50 ACRES

N 10TH ST

N 9TH ST

A. W. GOETZ ADD'N



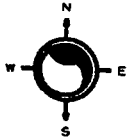
# W MEINECKE AV

SW 17-7-22  
ATLAS P. 323

323

323-24  
SCALE 1" = 80'

KRUEGER'S SUBDIVISION  
W CENTER ST

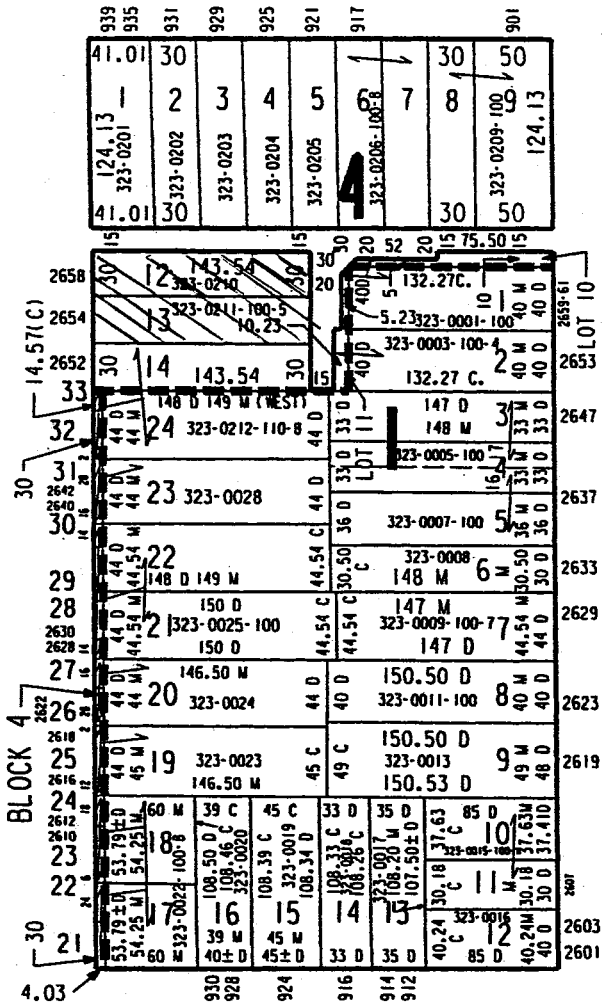


SUBDIVISION OF W. 60.50 ACRES

N 10TH ST

N 9TH ST

ASSESSOR'S PLAT NO 120



W CLARKE ST

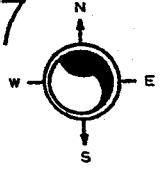
SE 18-7-22  
ATLAS P. 324

324

324-12  
SCALE 1" = 80'

ASSESSMENT SUBDIVISION NO. 37

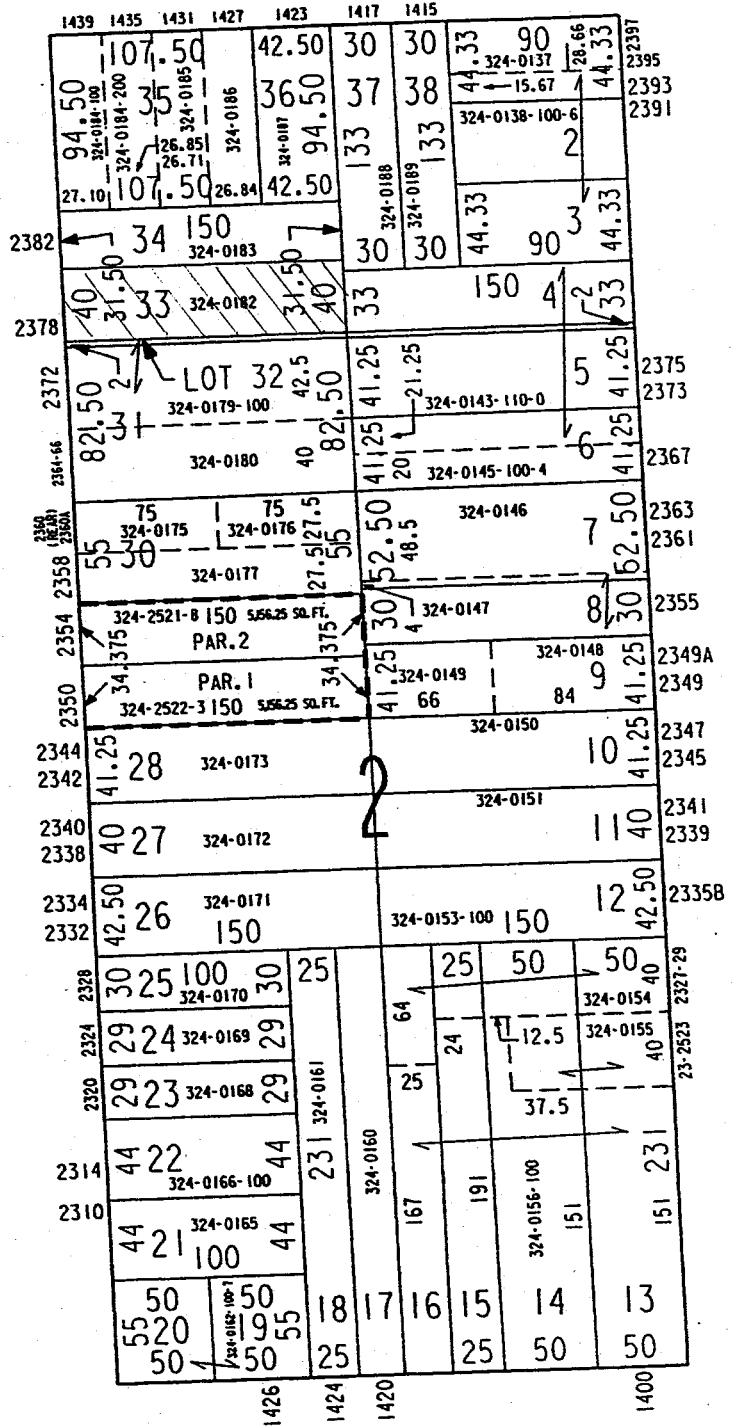
W MEINECKE AV



CERTIFIED  
SURVEY MAP  
NO. 6240

N 15TH ST

N 14TH ST

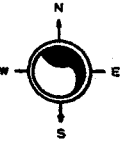


W NORTH AV

10-23-96  
ASSESSOR'S C

SE 18-7-22 324  
 ATLAS P. 324

324-18  
 SCALE 1" = 80'

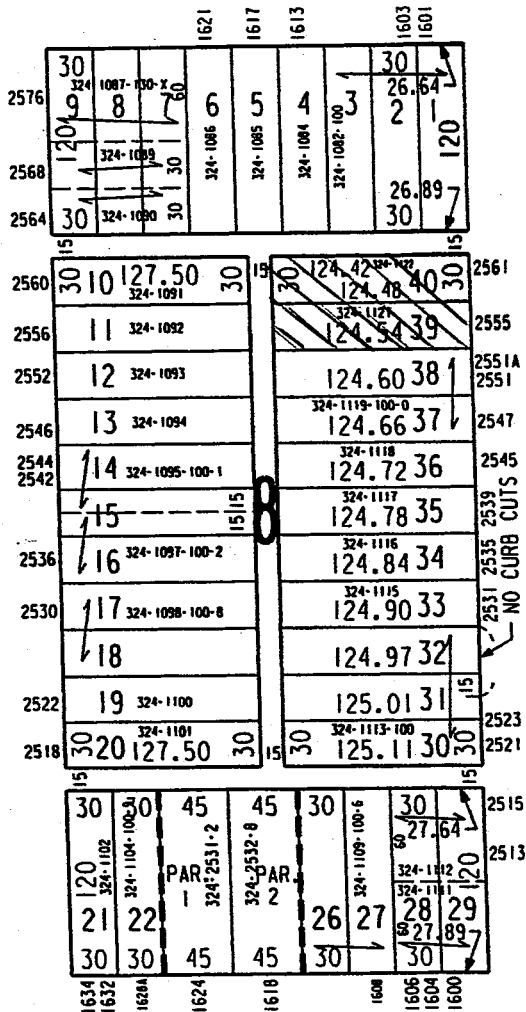


FERGUSON'S SUBDIVISION

W CLARKE ST

N 17TH ST

N 16TH ST



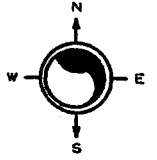
W WRIGHT ST  
 CERT SURVEY  
 MAP NO 6695

NW 18-7-22  
ATLAS P. 310

310

310-04  
SCALE 1" = 80'

JACOB BLACK'S SUBDIVISION  
W HADLEY ST



N 21ST ST

N 20TH ST

2776	30.80 310-0280	20	125.62	15	30.80 310-0281	15	125.62	2779
2772	30 310-0279	19	125.61	30	30 310-0282	2	125.61	2773
2768	310-0278	18	125.61		310-0263-100-0	3		2769
2764	310-0277-100-7	17	125.60			4		
		16			310-0265		125.61	5
2756	310-0275-100-6	15			310-0266		125.60	6
2752	310-0274-100-0	14	125.60		310-0267			7
		13	125.59		310-0268			8
2746	310-0272	12			310-0269			9
2740	310-0271	30	11	125.59	30	310-0270	10	125.60
2736	310-0466	20	125.59	30	310-0447	1	125.60	2737
2732	310-0465	19		30	310-0449-100-1	2	125.60	2731
2730	310-0464	18	125.59		310-0450	3	125.59	2729
2726	310-0463	17	125.58		310-0451	4	125.59	
	310-0462	16			310-0452	5	125.58	
2716	310-0461	30	15	125.58	30	310-0454-100	6	125.58
		32.58	31				31	32.58
	310-0460	120						
	310-0459	14	13	12				
	310-0458							
	310-0457							
		32.57	31					
2034	2030	2028	2024	2020	2018	2008		

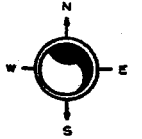
W CENTER ST

BRYANT & HENRY'S SUBDIVISION

NE 18-7-22  
ATLAS P. 311

311

311-37  
SCALE 1" = 80'



H. HAERTEL'S ADDITION NO. 2

# W CHAMBERS ST

N 20TH ST

N 19TH ST

	1913	1911	1907	1905	
27	30	100	078	130	
T	1272	100	1271		
T	311-1272		311-1271		
T	35	72	4	15 15	
T	311-1274-1005				2963
T					2961
T	311-1275 6				2957
T	311-1276 7				2953
2954	311-1277 8				2949
T	53	9	54		
2944	311-1278	311-1279-1005			2945
T	53.5	10	53.5		
2940	311-1280-100				
T	11 1				2935
T	311-1283-1110				
T	311-1284 13				2931
T	311-1285 14				2925
T	311-1287	311-1286			2921
2920	55.5	15	51.5		
T	311-1288 16				2917
T	311-1289 17				2913
T	311-1290-100				2911
T	18				
T	19				
T	311-1292				2903
27	30	107	20	30	2901

# W LOCUST ST

FULLER-WARREN HEIGHTS

W HADLEY ST

N 35TH ST

N 34TH ST

2776	45	38	120	309-0875	45	2779
						2777
2772	30	37	309-0874	30		2773
2766		36	309-0873			2769
2764		35	309-0872			2767
2760		34	309-0871			2765
2756		33	309-0870			2761
2750		32	309-0869			2759
2746		31	309-0868			2753
2742		30	309-0867			2749
2738		29	309-0866			2745
2736		28	309-0865			2743
2732	1	27	309-0864-100-7			2741
		26				2739
2724		25	309-0862			2737
2720	30	24	309-0861			2735
		120				

3430-32	3424-26	3422	3420	3418-18A	3416	3412-14	3406	3402
37	30							
120	309-0860	309-0859	309-0858	309-0857	309-0856		30	37
23	22	21	20	19	18		309-0855	2713
37	30						309-0854	
							309-0853	

W CENTER ST

S.W. - 34 - 8 - 21  
ATLAS P. 212

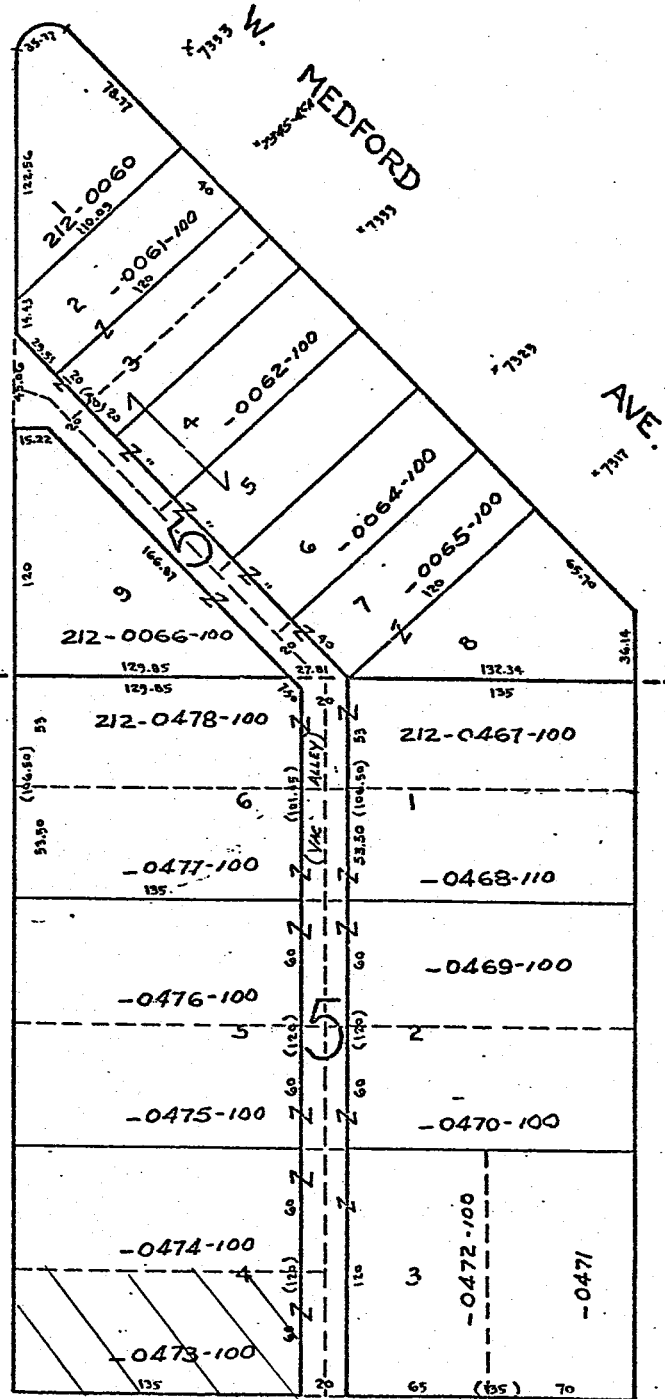
212

212-24

FONDTOSA  
VOL. 45 P. 33



ST.



12-2-59  
Res. # 59-1547  
Vacated

WELLINGTON ESTATES  
VOL. 48 PAGE 79

N. 74<sup>TH</sup>

ST.

N. 73<sup>RD</sup>

W. FAIRMOUNT AVE.

MICROFILMED 12-6-63



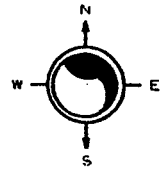
SE 08-7-22

282

282-15

ATLAS P. 282

SCALE 1" = 80'



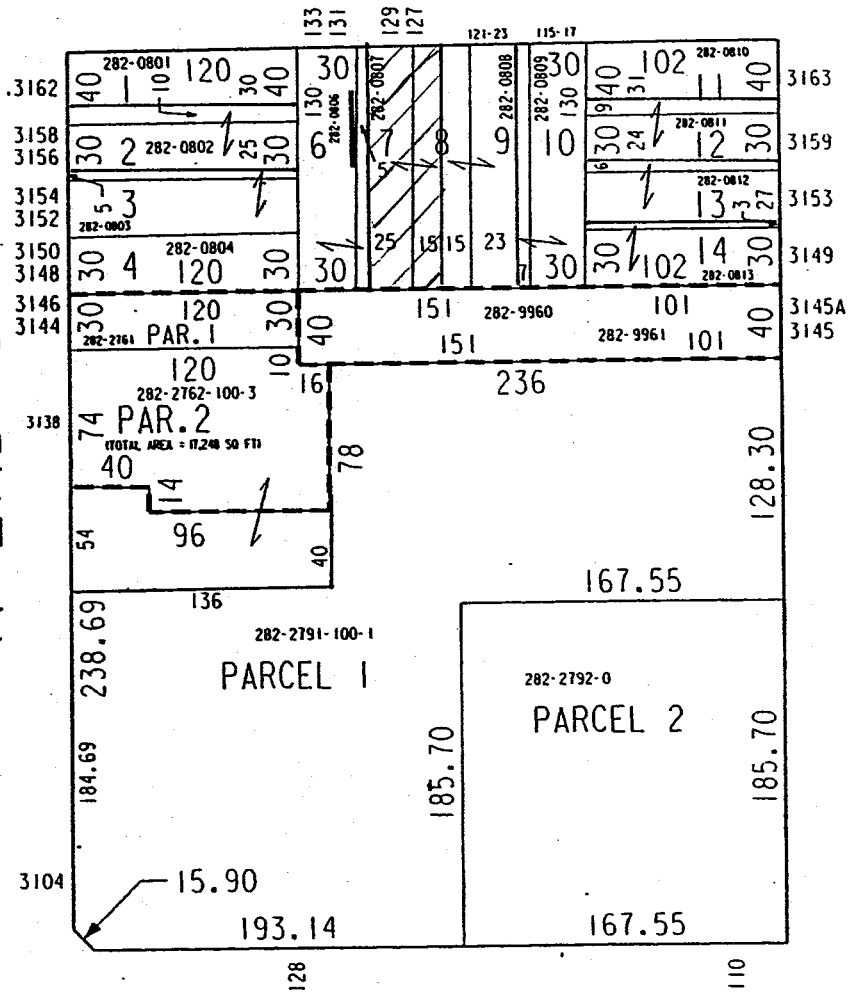
THEO. C. FROEMMING'S SUBD.

W. ~~W~~ AUER AV

C.S. MAP  
NO. 1981  
REC. 19/1972

N 2ND ST

N 1ST ST  
LANDS



W BURLEIGH ST

C.S. MAP NO. 4458

RECORDED 4-25-84

06-02-93

NW 16-T-22

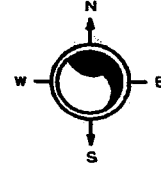
ATLAS P. 314

314

314-30

SCALE 1" = 80'

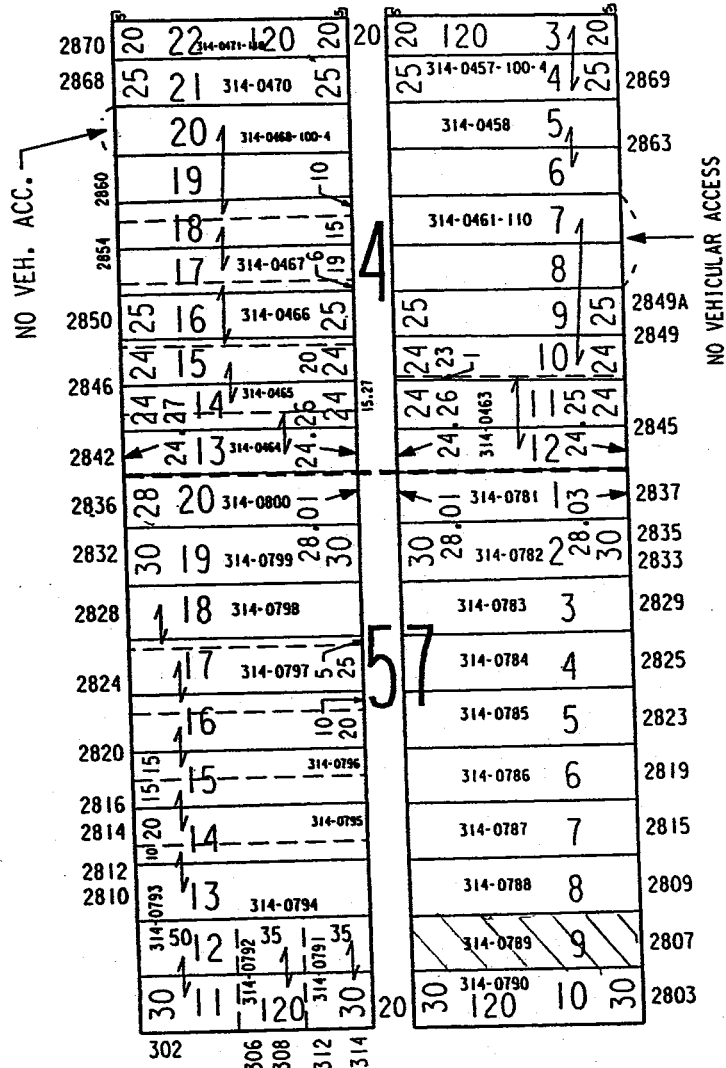
# MACK & NEYMANN'S SUBDIVISION



## E LOCUST ST

N RICHARDS ST

N BUFFUM ST



## E HADLEY ST

### RE-SUBDIVISION BLOCKS 53 TO 60 OTIS B. HOPKIN'S SUBDIVISION

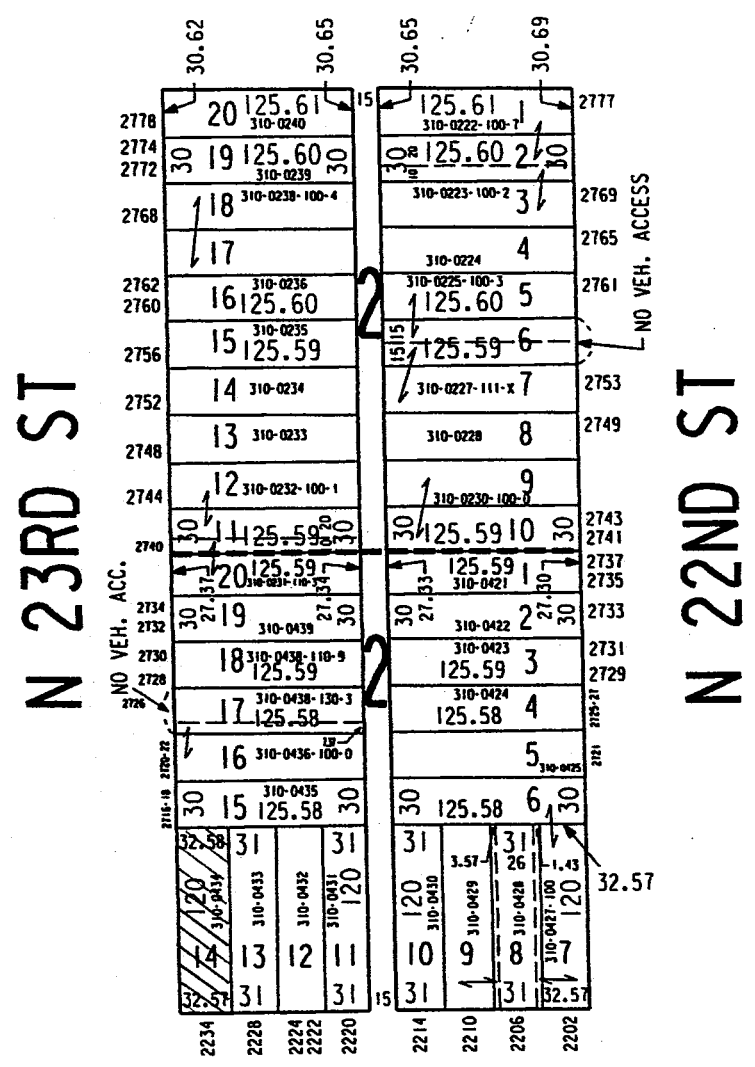
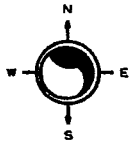
07-25-97

ASSESSOR'S OFFICE  
CITY OF MILWAUKEE

NW 18-7-22 310  
 ATLAS P. 310

310-12  
 SCALE 1" = 80'

JACOB BLACK'S SUBDIVISION  
 W HADLEY ST



W CENTER ST  
 BRYANT & HENRY'S SUBDIVISION

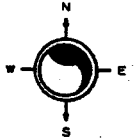
04-04-00  
 ASSESSOR'S OFFICE  
 CITY OF MILWAUKEE



NW 19-7-22  
ATLAS P. 350

350

350-30  
SCALE 1" = 80'



MEEHAN & SOMER'S SUBD.

W NORTH AV

N 25TH ST

N 24TH PL

2485	2479	2479	2475	2473	2471	2469	2465	2461	2459	2457	2451
30	30	30	30	30	30	30	30	30	30	30	30
1	2	3	4	5	6	7	8	9			
117.83	350-2052	117.53	117.43	117.33	117.23	117.13	117.03	350-2057			
117.73	117.63							116.93			
2250	2250	2250	2250	2250	2250	2250	2250	2250	2250	2250	2250
30	30	30	30	30	30	30	30	30	30	30	30
15	15	15	15	15	15	15	15	15	15	15	15
2234	2234	2234	2234	2234	2234	2234	2234	2234	2234	2234	2234
30	30	127.50	30	30	127.50	10	30	2241	2239		
29								350-2060-100-9	11	1	
2230	2230	2230	2230	2230	2230	2230	2230	2230	2230	2230	2230
28	350-2074							350-2061	13		
2222	2222	2222	2222	2222	2222	2222	2222	2222	2222	2222	2222
27								350-2063-100-5	14		
26											
2220	2220	2220	2220	2220	2220	2220	2220	2220	2220	2220	2220
30	30	25	127.50	30	30	127.50	15	30	2221	2217	
15	15	15	15	15	15	15	15	15	15	15	15
2210	2210	2210	2210	2210	2210	2210	2210	2210	2210	2210	2210
30	30	30	30	30	30	30	30	30	30	30	30
115.79	350-2070-200	350-2070-100	350-2069					350-2065			
24	22	22	21	20	19	18	17	2456	2454	2452	2450
30	22	22	21	20	19	18	17	350-2068-100	350-2067-100	350-2066-100	350-2065-100
2476	2474	2472	2466								

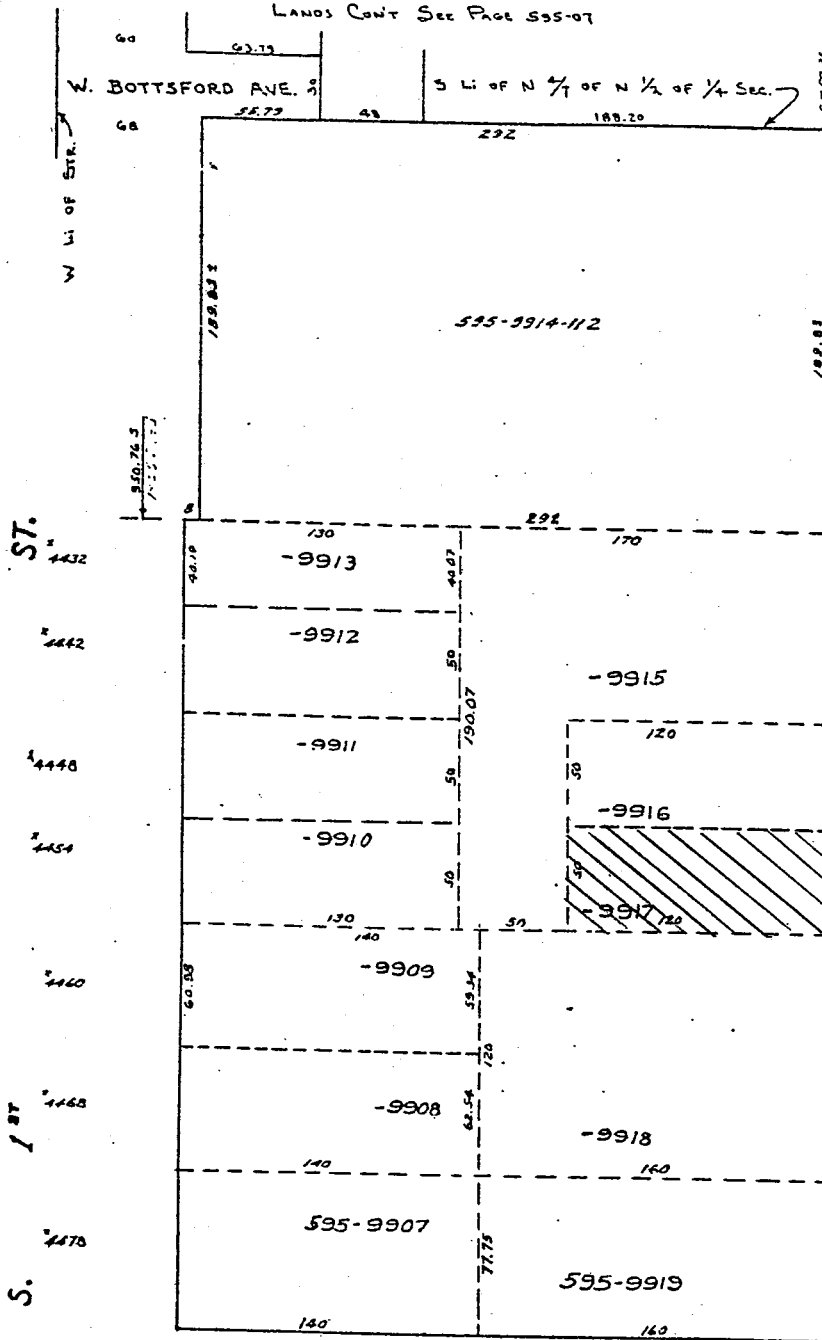
W GARFIELD AV

SE 20-6-22  
ATLAS P. 595

# 595 LANDS

595-08

LANDS CONT SEE PAGE 595-07



MICROFILMED 1-22-71

W. VAN NORMAN AVE.

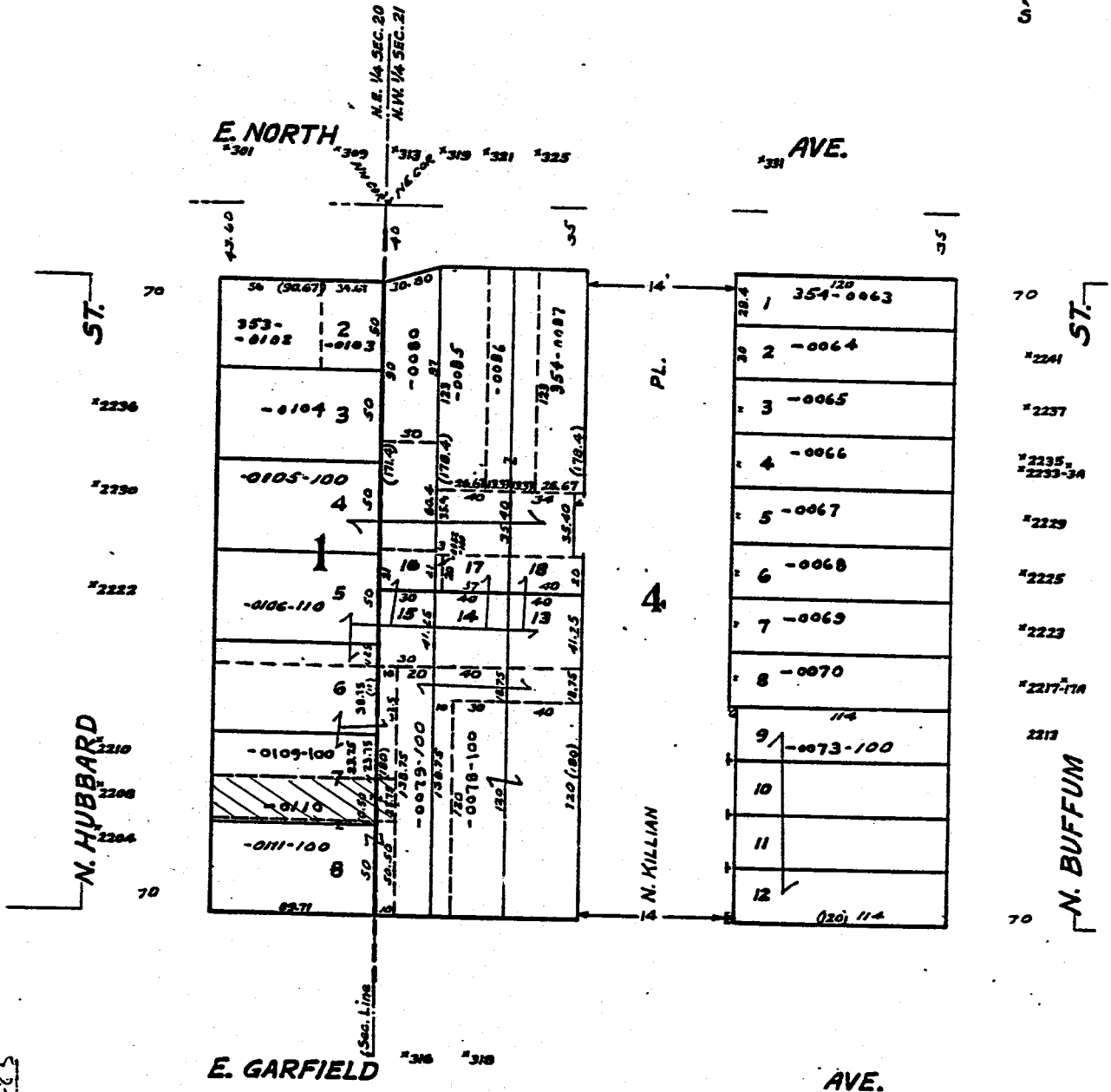
N.W. 21-7-22 &  
 N.E. 20-7-22  
 ATLAS P. 354 & P. 355

353 & 354

354-17

SHERMAN'S ADDN.  
 IN N.E. 20-7-22

PARK ADDITION



MICROFILMED 2-22-83

SW 20-8-21  
ATLAS PAGE 145

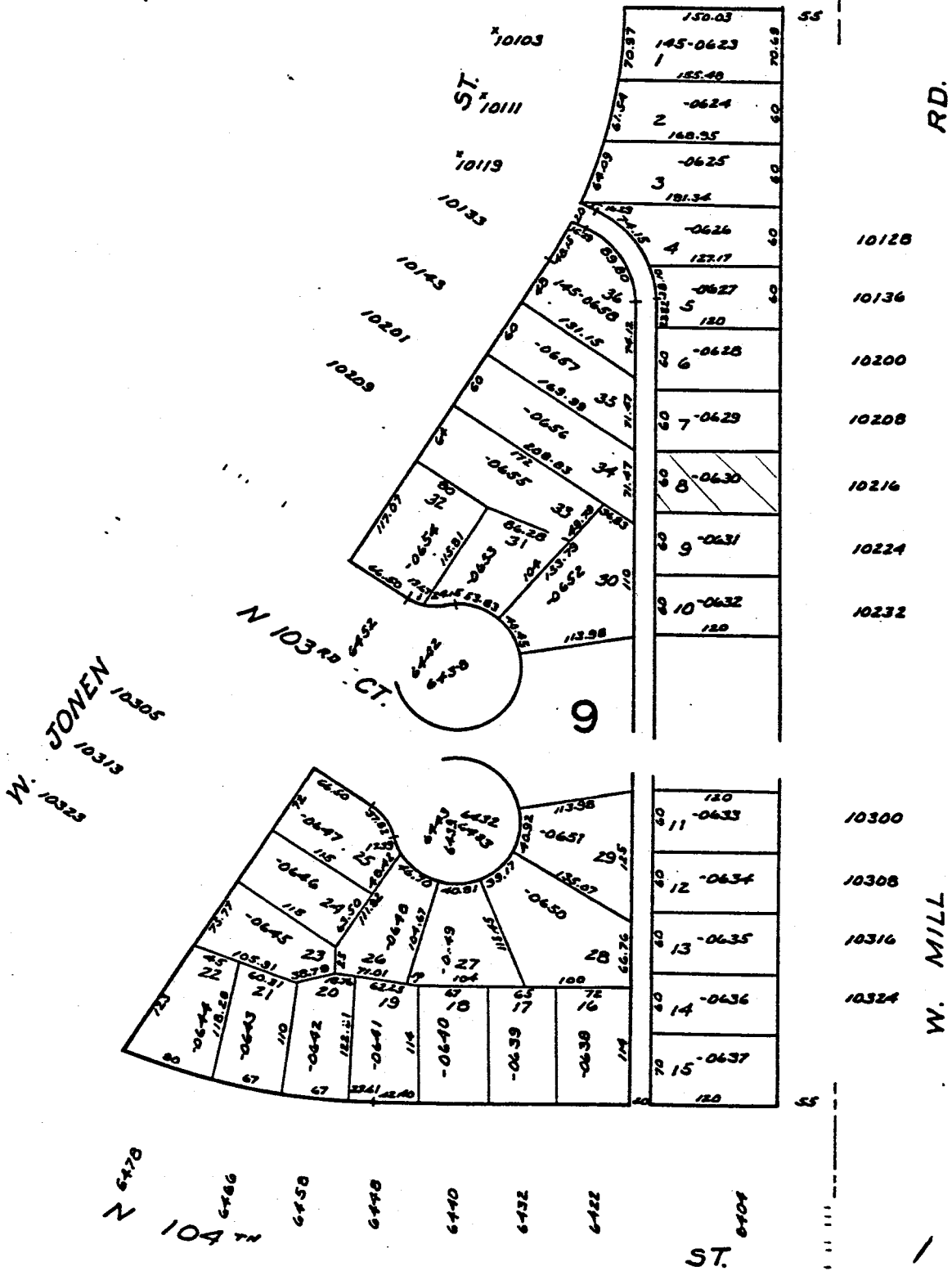
# MILLWOOD PARK

145

145-19  
SCALE 1" = 100'

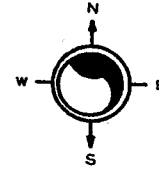
N 101 ST

ST.



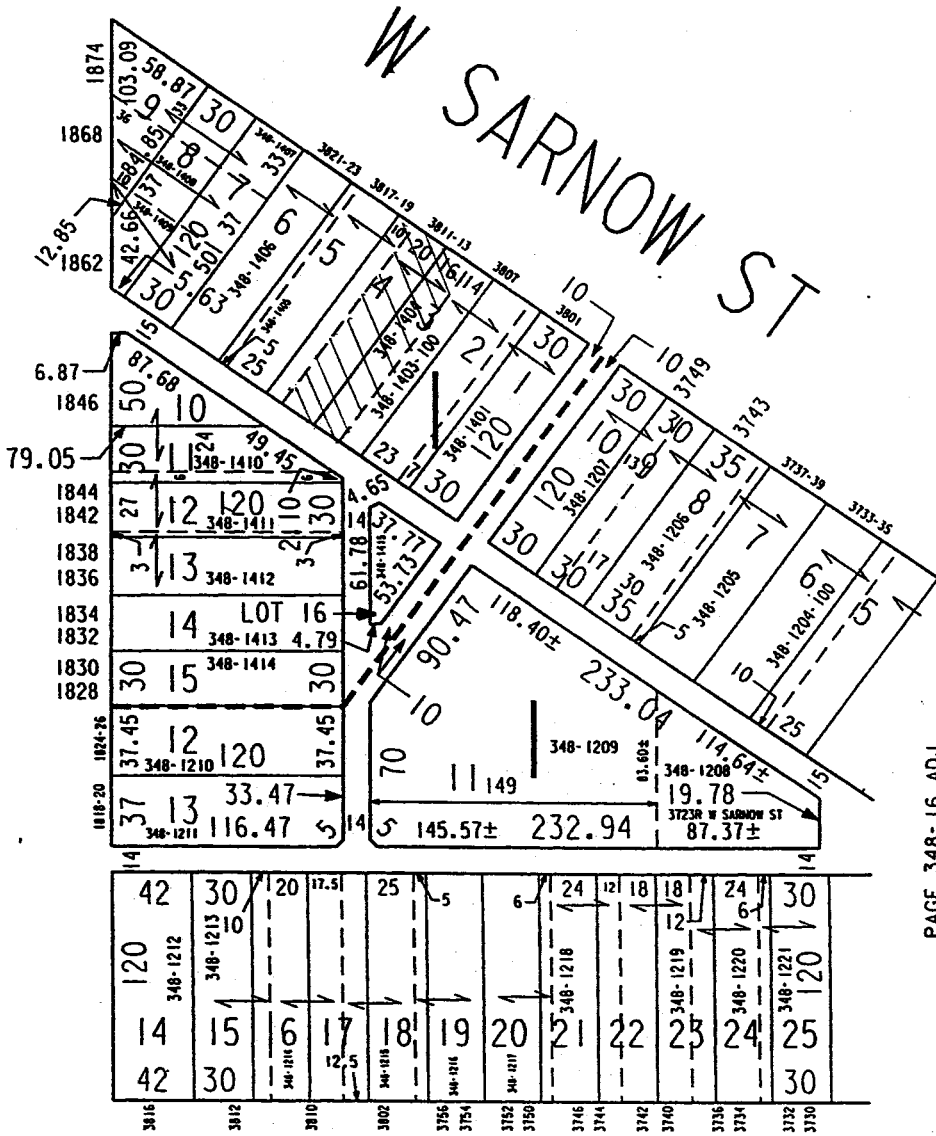
Millwood Park, 4/1/97





# WEST PARK SUBDIVISION

N 39TH ST



PAGE 348-16 ADJ.

# W ROBERTS ST SARNOW'S SUBDIVISION

S.E. 31-7-22 & S.W. 32-7-22  
ATLAS P. 432 & P. 433

432 & 433

432-47

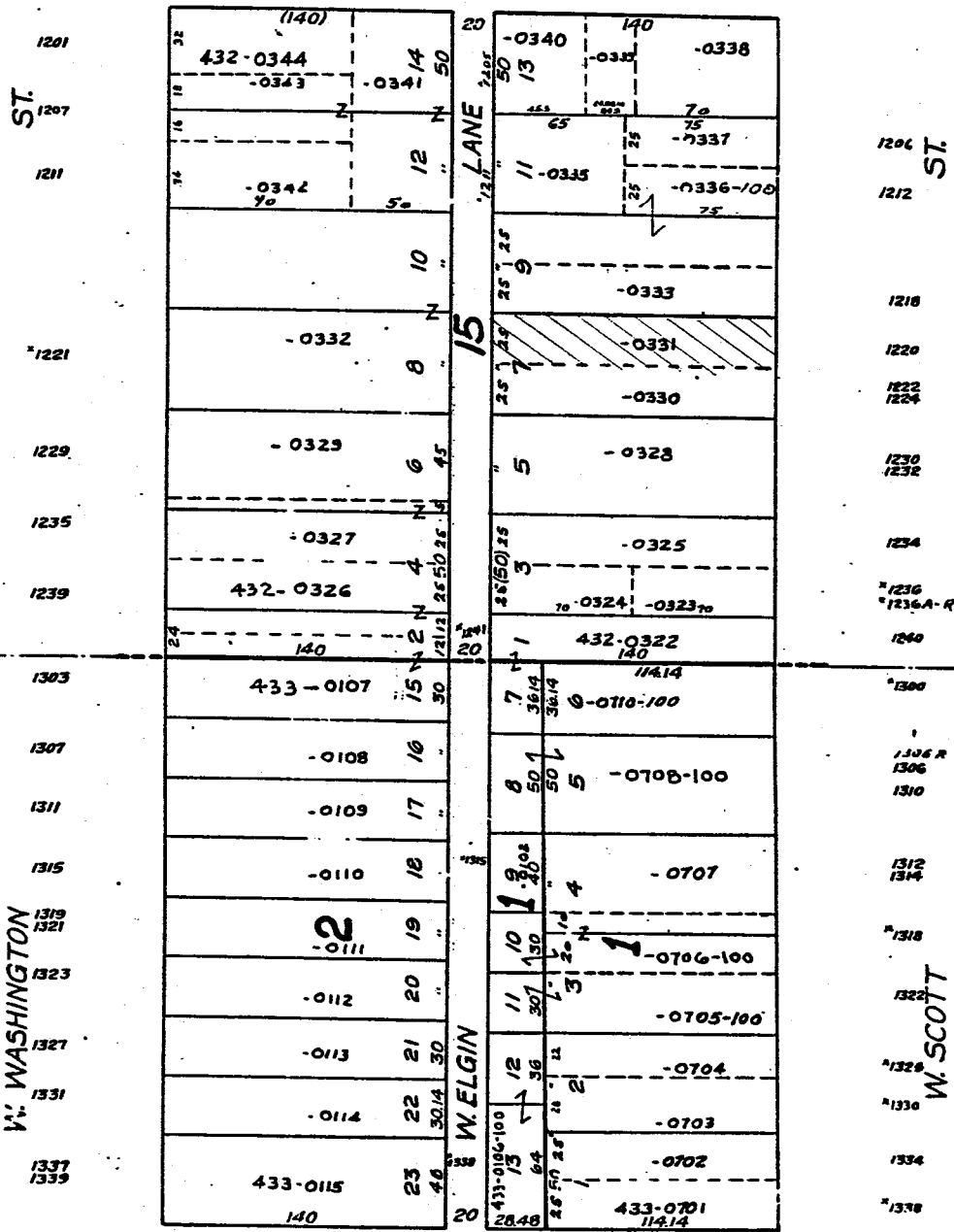
WALKER'S POINT ADDITION S. 12<sup>TH</sup>

1113

1123

1129

ST. 1137



WALKER'S POINT ADDITION

DEEKI N'S SUBD.

PREFIX 432  
W. LINE OF S.W. 32-7-22

PREFIX 433  
E. LINE OF S.E. 31-7-22

S. 14<sup>TH</sup>

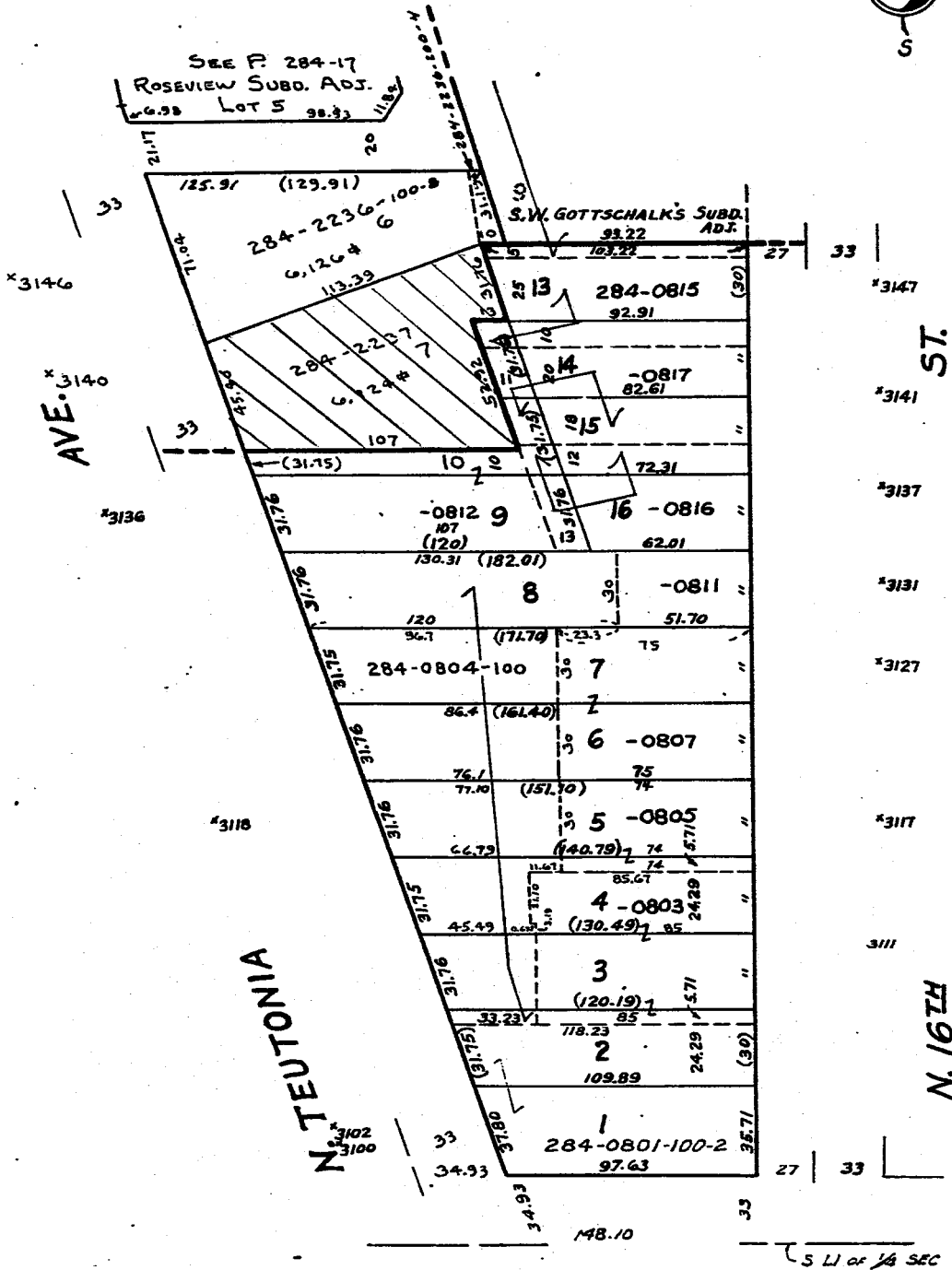
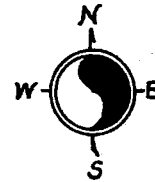
ST.

MAR 31 1982 ASSESSMENT SUBD. NO. 22

MICROFILMED

Scale 1 inch = 50 ft.

ROSEVIEW SUBDIVISION



W. BURLEIGH ST.

C. KIECKHEFER'S SUBD.  
Vol. 18 Page 27

S.E. 23-7-21  
ATLAS R 367

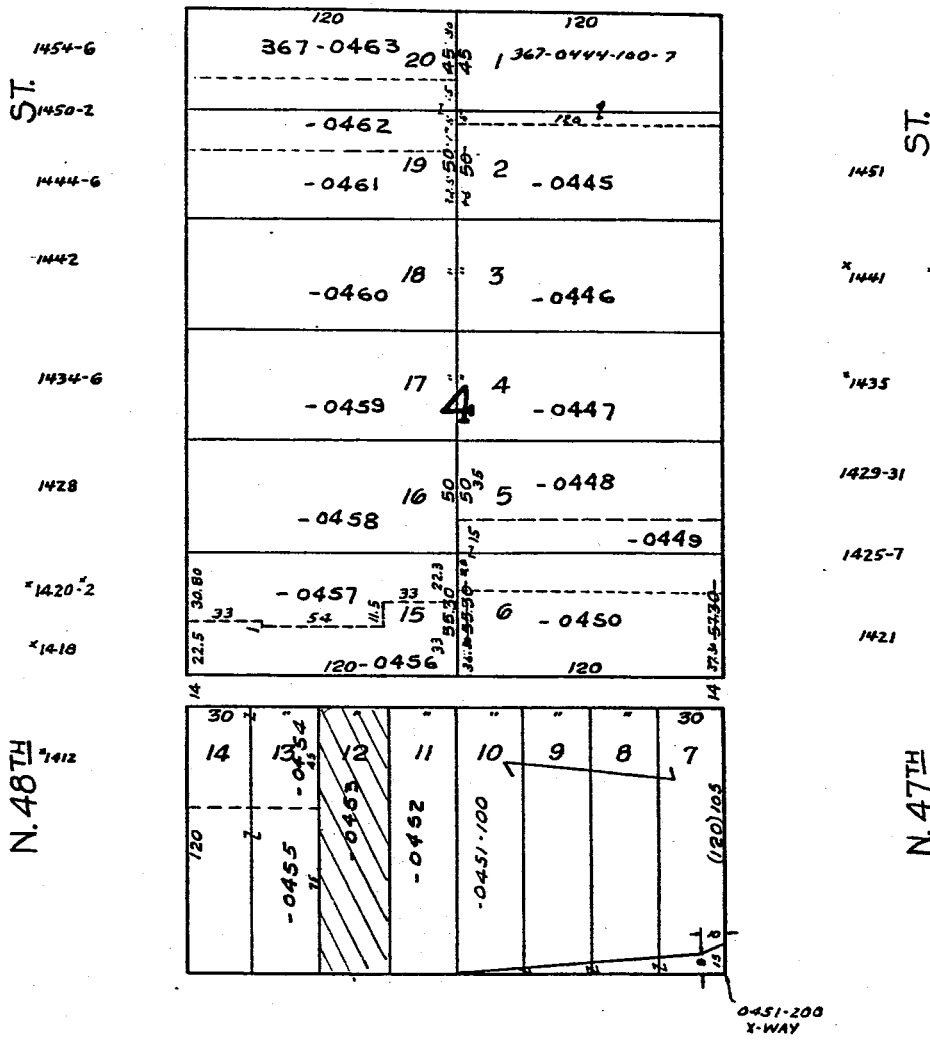
367

367-08

REINNOLDT, MATTHIESON & REINHARDT  
LAND CO'S CITY PARK SUBDIVISION  
Vol. 17 Page 16



W. CHERRY ST. 4711



6 20 88

4726 4720-2 4716-8  
W. VLIET

4702  
ST.

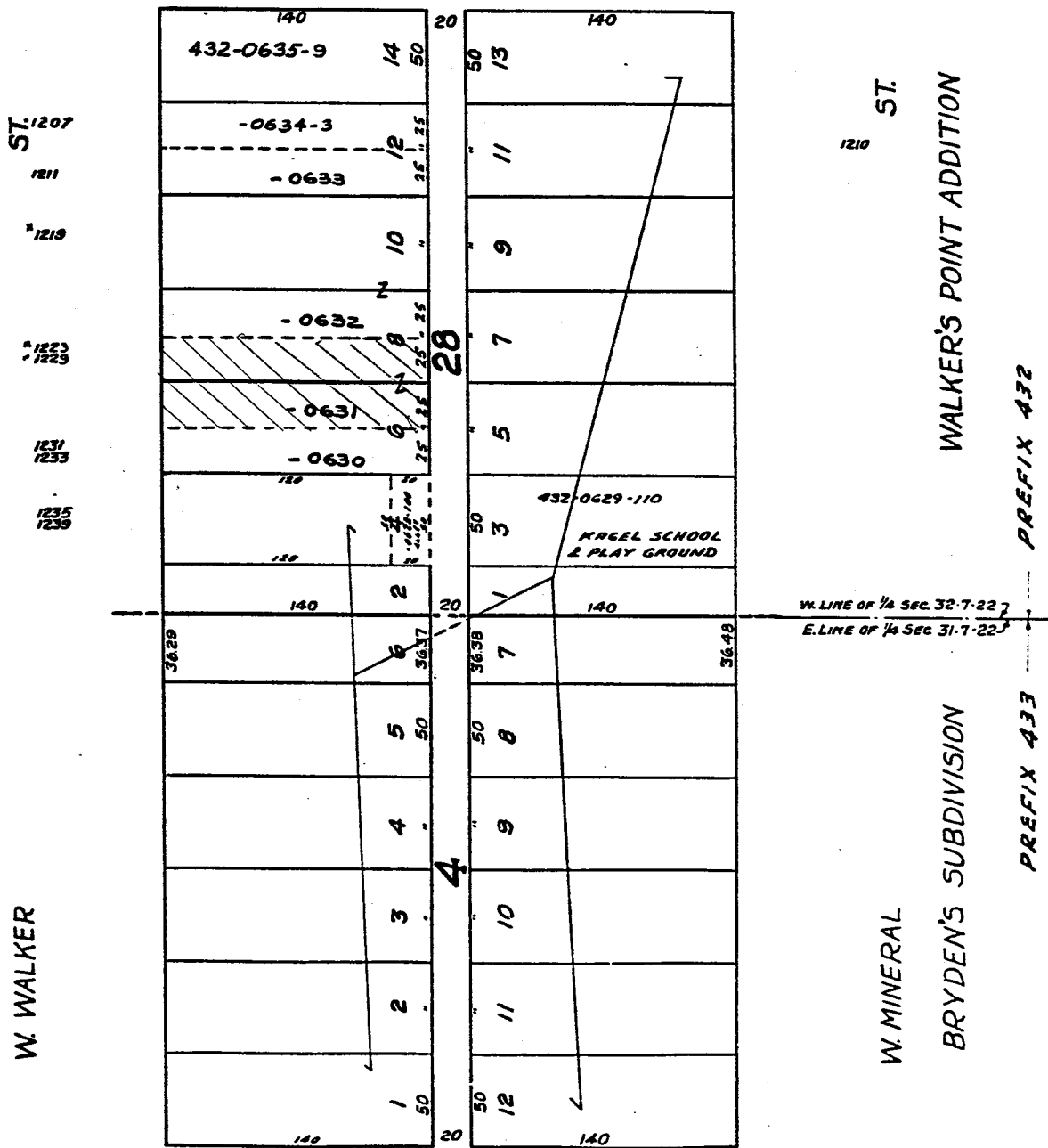
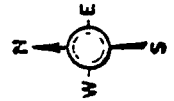
S.E. 31-7-22 & S.W. 32-7-22  
ATLAS P. 433 & 432

432 & 433

432-45

S. 12<sup>TH</sup>  
307

ST.



ST. 1207

1211

1219

1223

1223

1231

1233

1235

1239

ST. 1210

WALKER'S POINT ADDITION

PREFIX 432

W WALKER

W. MINERAL

BRYDEN'S SUBDIVISION

PREFIX 433

S.W.-5-6-22  
ATLAS P. 468

C. HARMEYER'S SUBD.  
468

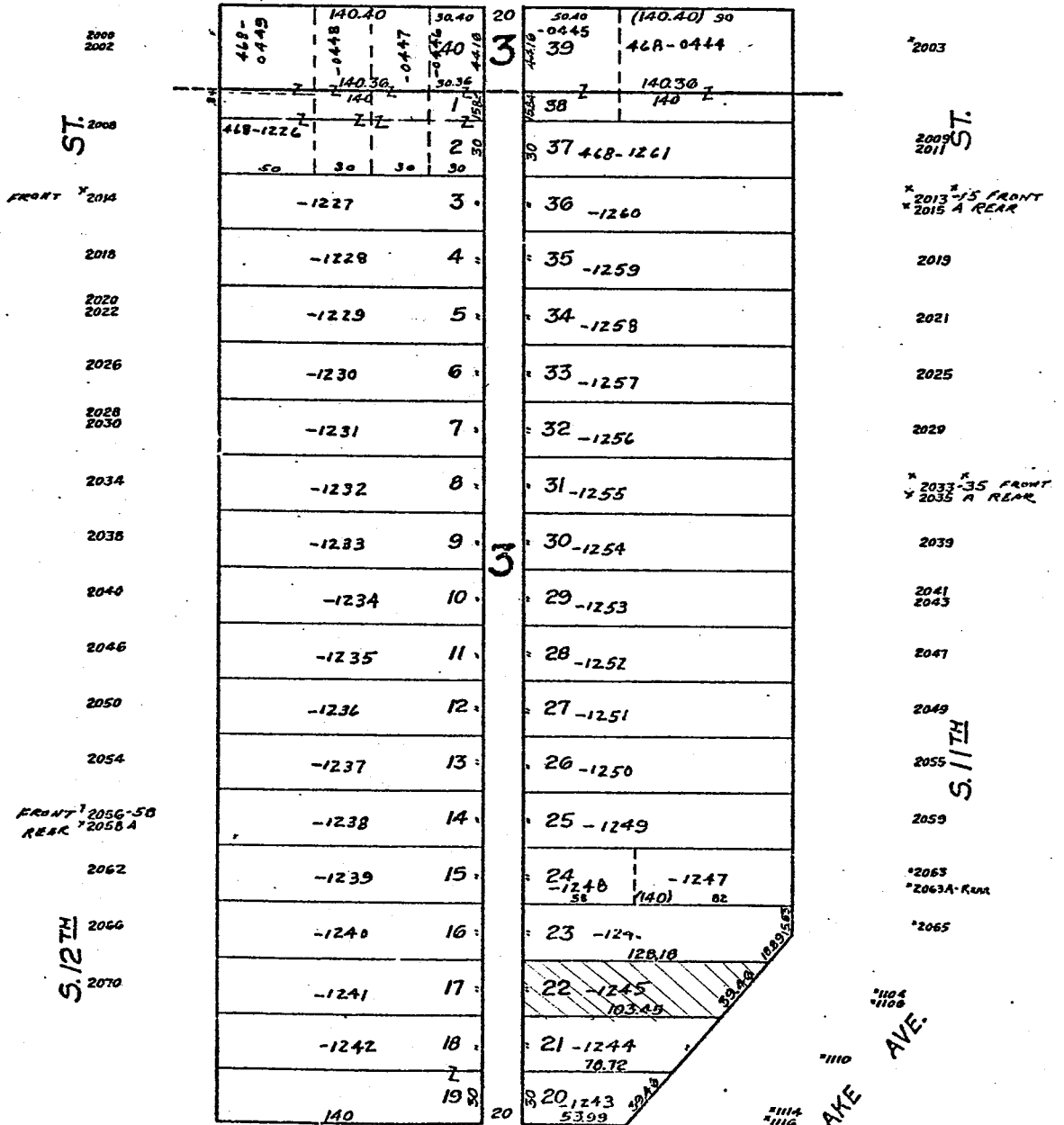
468-18

W. ROGERS

ST.

1133 1129 1125

1113



MICROFILMED 7-22-76

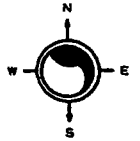
W. BECHER  
W. H. SKINNER'S SUBD.

W. WINDLAKE AVE.

SE 18-7-22  
ATLAS P. 324

324

324-18  
SCALE 1" = 80'

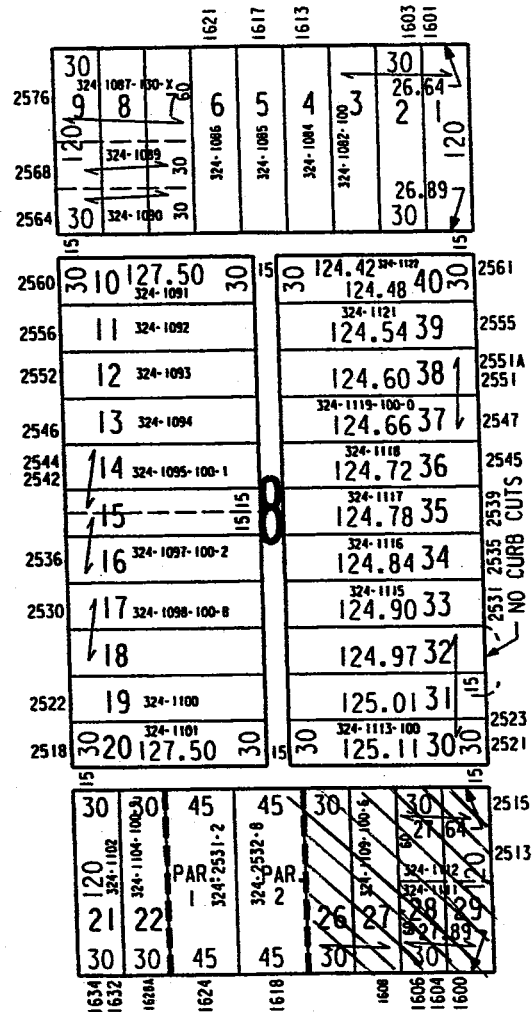


FERGUSON'S SUBDIVISION

W CLARKE ST

N 17TH ST

N 16TH ST



W WRIGHT ST  
CERT SURVEY  
MAP NO 6695