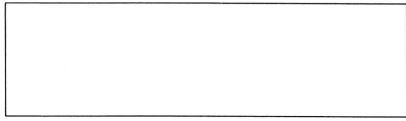
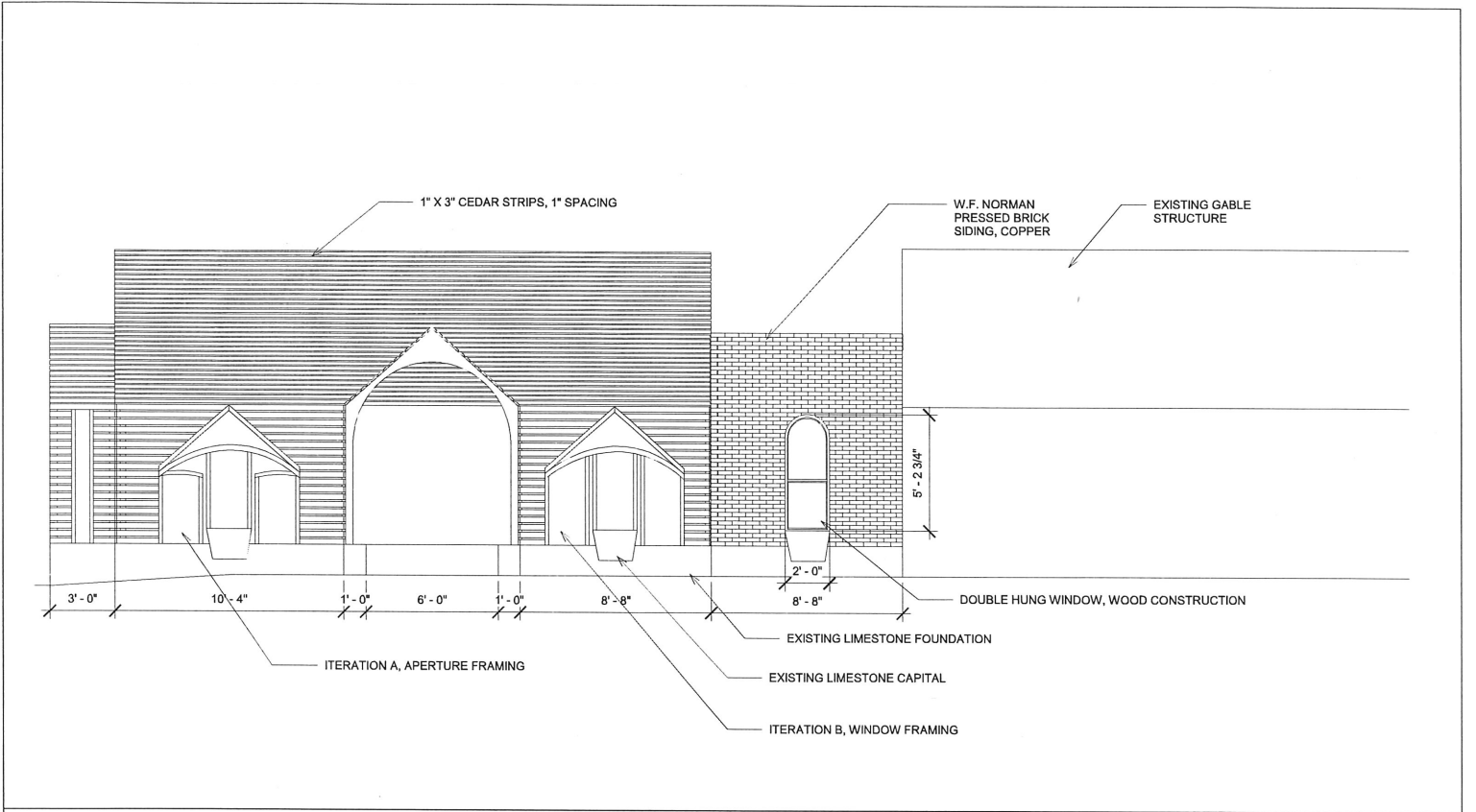


Steve Bialk  
 Lathe House Addition

No.	Description	Date

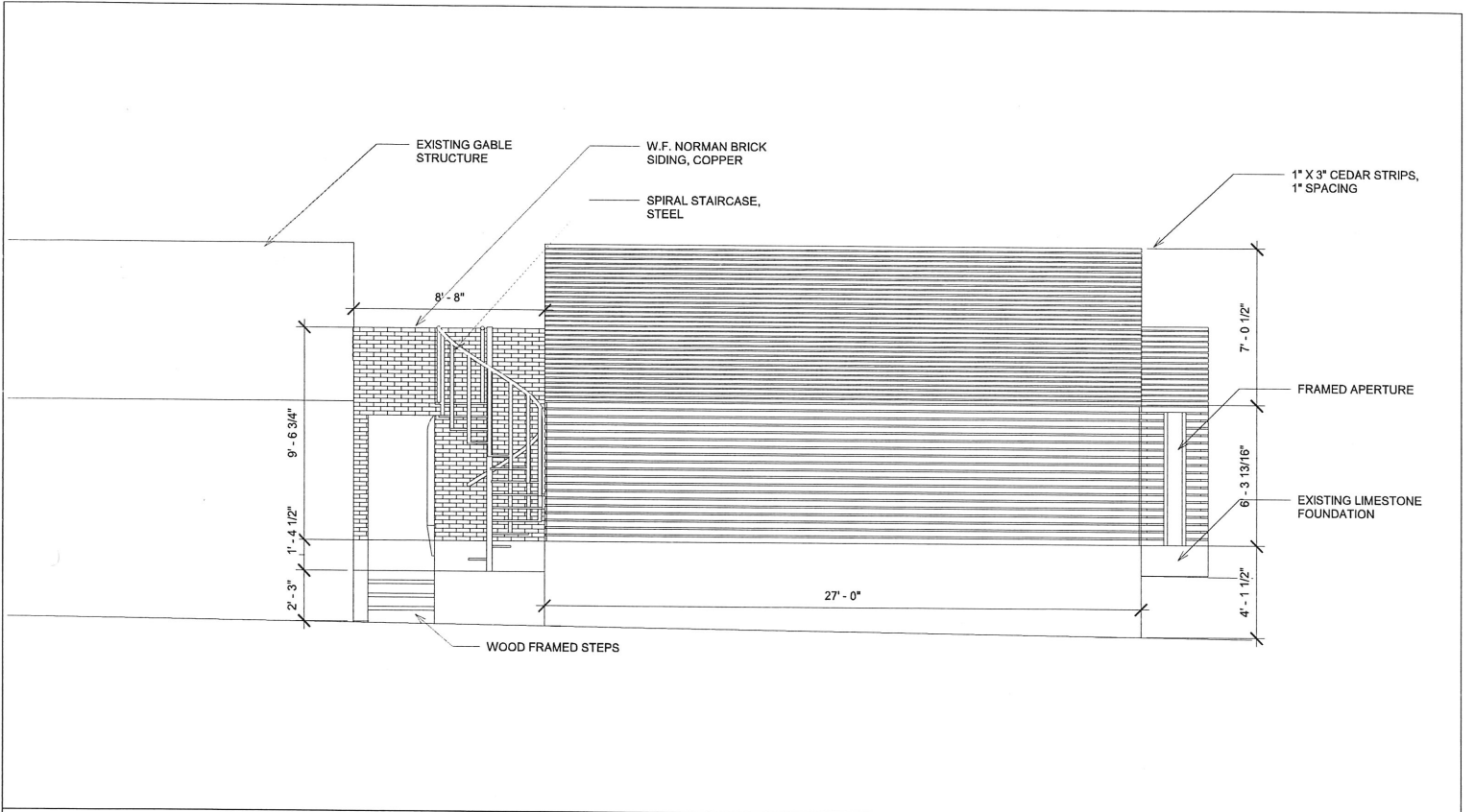
South Elevation	
Project number	001
Date	5/12/2018
Drawn by	Author
Checked by	Checker
A101	
Scale 1/4" = 1'-0"	



Steve Bialk  
 Lathe House Addition

No.	Description	Date

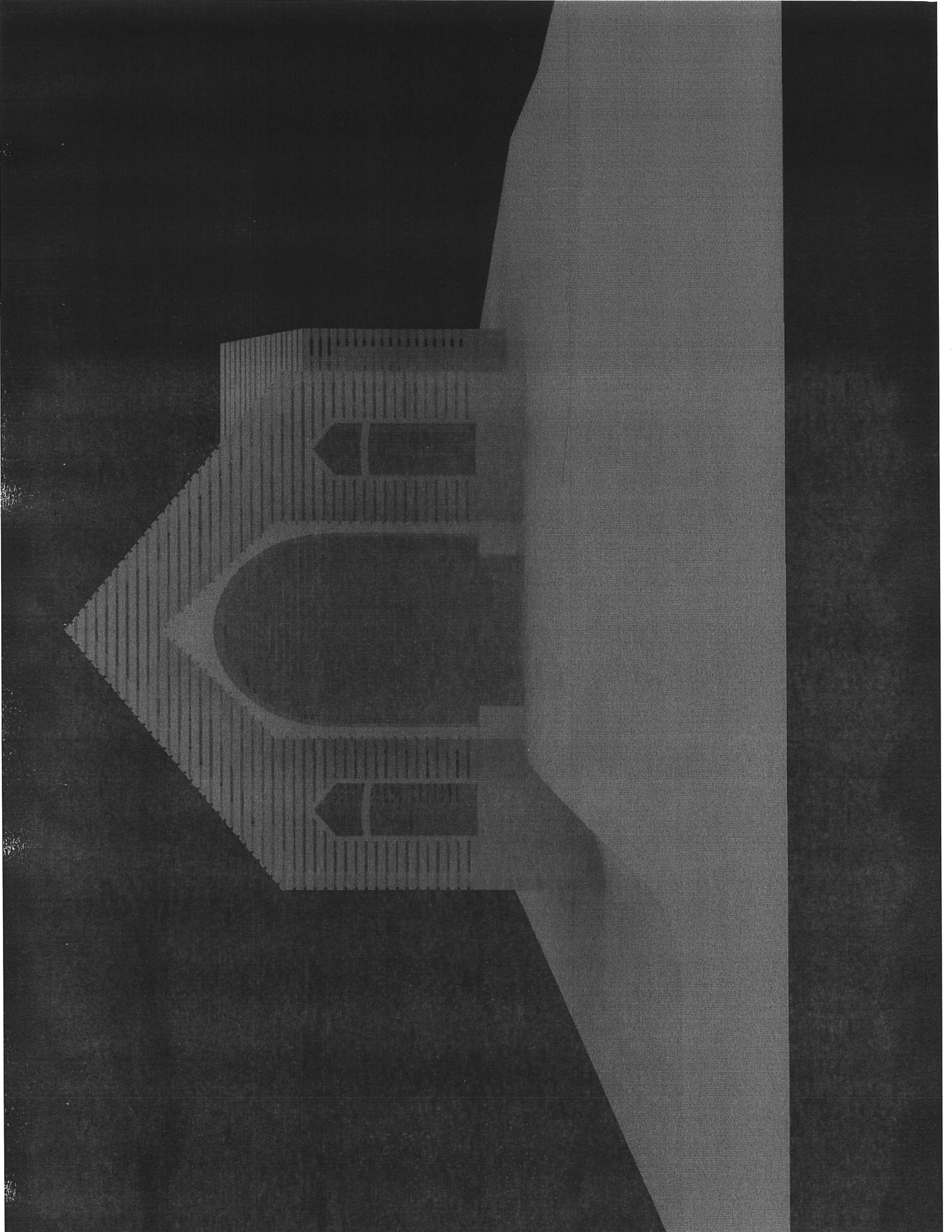
East Elevation	
Project number	001
Date	5/12/2018
Drawn by	RHS
Checked by	OWNER
<b>A102</b>	
Scale 1/4" = 1'-0"	

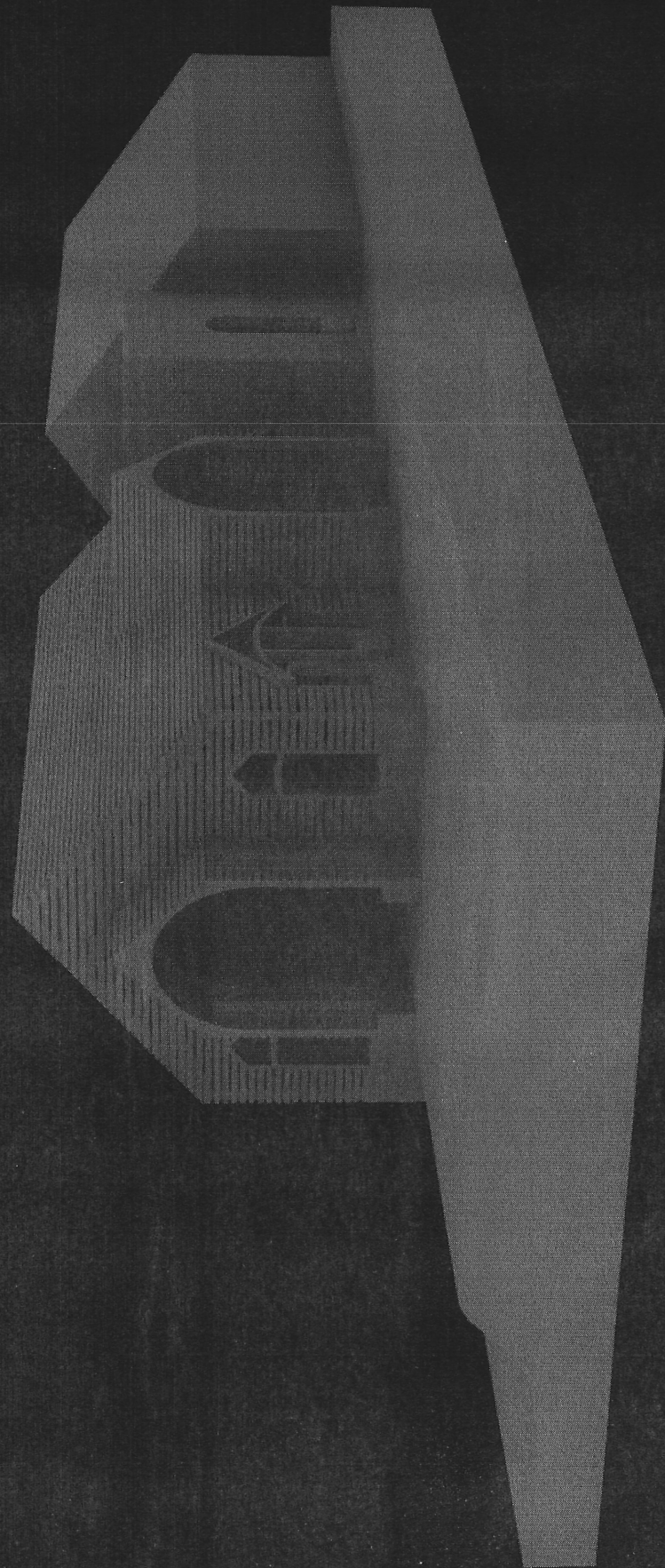


Steve Bialk  
 Lathe House Addition

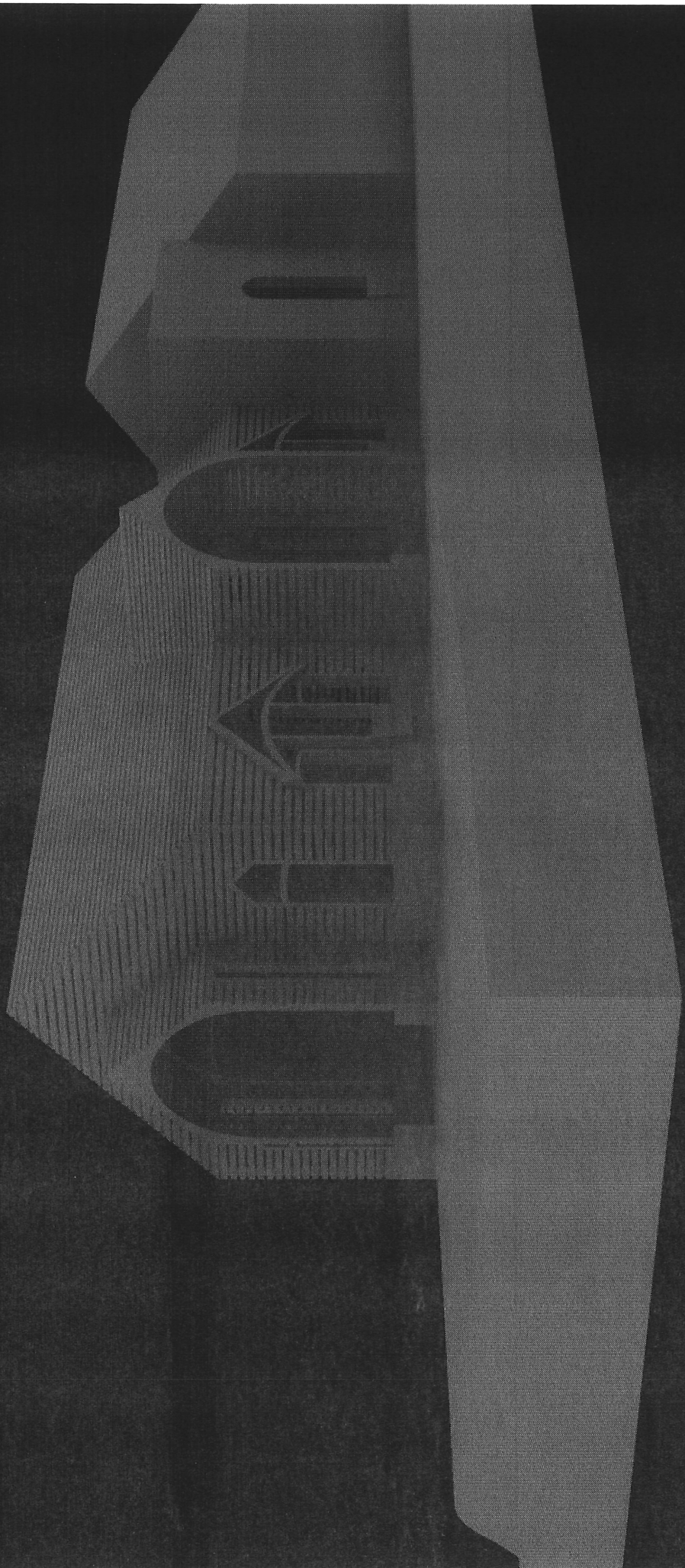
No.	Description	Date

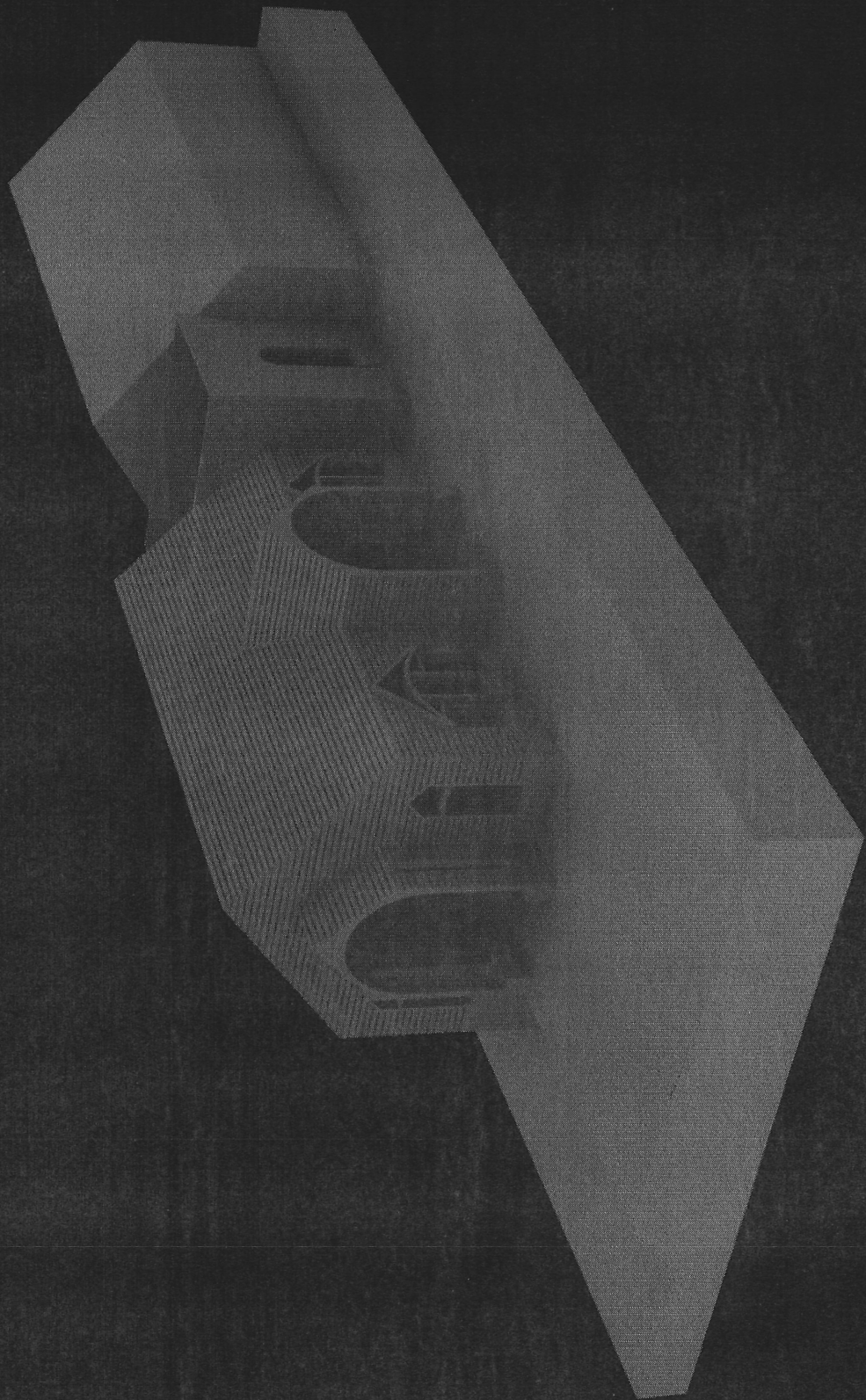
West Elevation	
Project number	001
Date	5/12/2018
Drawn by	RHS
Checked by	Owner
<b>A103</b>	
Scale 1/4" = 1'-0"	



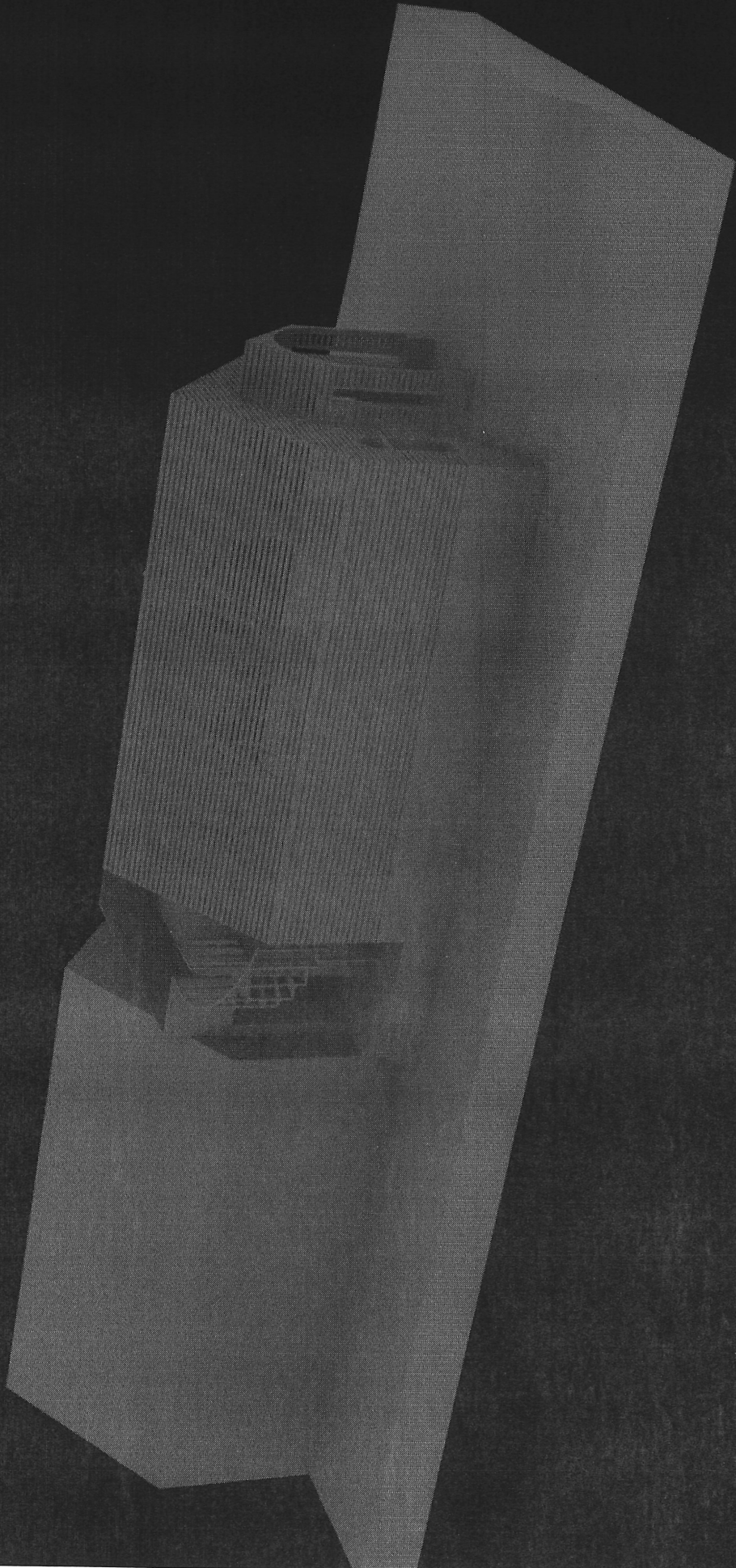






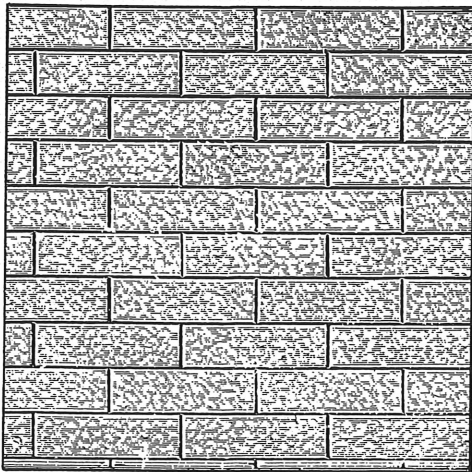




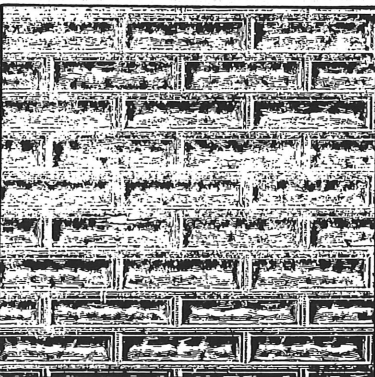


## Pressed Metal Siding

This is what siding should be: beautiful, economical, lightweight and permanent. W.F. Norman offers this and more. Stamped from galvanized steel. Paint them the color of your choice and you'll love the look. Installation is simple, just nail the panels over solid sheathing. W.F. Norman steel siding is ideal for both restoration projects and new construction.



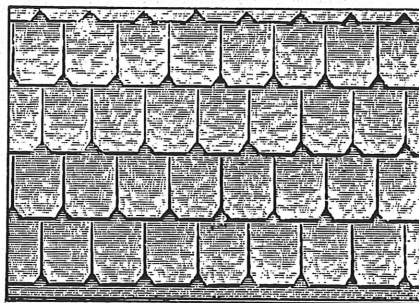
**Press Brick Siding**  
Size of Sheet, 28x60 inches  
Brick Size, 2 3/4 x 8 1/2



**Rock-Faced Brick Siding**  
Size of Sheet, 28x60 inches  
Brick Size, 2 3/4 x 8 1/2



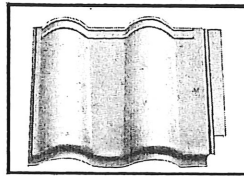
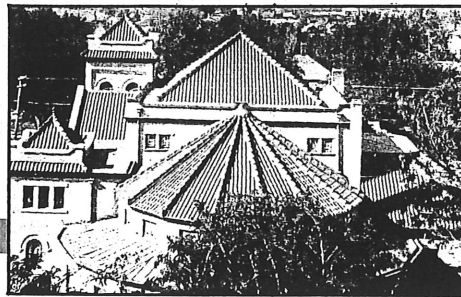
**Pitch-Face Stone Siding**  
Size of Sheet, 28x60 inches  
Stone Size, 7 x 12



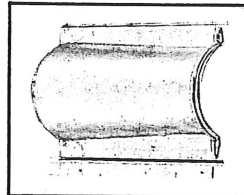
**No. 3 Cluster Shingle**  
Size of Sheet, 24x48 inches  
Shingle size, 4 x 5 1/2

## Lightweight metal shingles in the classic roofing styles

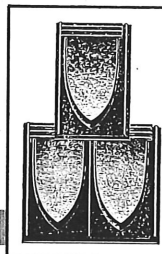
W.F. Norman has re-introduced its original 1908 line of metal shingles. They will give your building a roof that is both beautiful and practical. Many original Norman metal roofs are still in good condition and in use today. Lightweight Norman metal shingles will not burn, crack, shrink or rot. Four classic styles are offered, along with all the extra pieces needed for a complete installation. These pieces include ridge tiles and flashing, valley tiles, hip tiles and finials, gable finials, and ornamental ridge cresting and tiles. All shingles are made of Galvanized steel, and are available in solid copper, too.



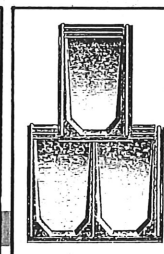
**Spanish Tile**  
A traditional favorite...  
4" Tile.  
12" x 15" (82 per square)



**Mission Type**  
For a bolder appearance... Mission is about 1/3 larger than the Spanish style  
12" x 8 3/4"  
(137 per square)



**Style "A"**  
Shingle is 8 1/4" x 12"  
(145 per square)



**Style "C"**  
Shingle is 8 1/4" x 12"  
(145 per square)

### Telephone Assistance

We will be happy to help you at any stage of planning or installation. Call for general product information; and for help selecting a pattern, designing the layout, ordering, and installing. Please call toll-free at:  
**1-800-641-4038.**



### Catalogs

For a reproduction copy of our 1908 seventy-two page illustrated catalog, write or call today. Over 140 ceiling components are pictured. Our Architectural & Decorative Sheet Metal Ornaments catalog offers over 1300 items. Ask for brochures about our steel siding and metal roof shingles.

### Custom Reproductions

Our unique manufacturing process enables us to make reproductions of original panels on a custom basis. If you have an emblem, ornament, panel, or cornice you would like to duplicate and reproduce, call to see if we can help. This service has been essential to many restoration projects.

We manufacture the original Hi-Art Steel Ceilings.

Fax. No. 417-667-2708

**W.F. Norman Corporation P.O. Box 323, Nevada, Mo. 64772-0323**