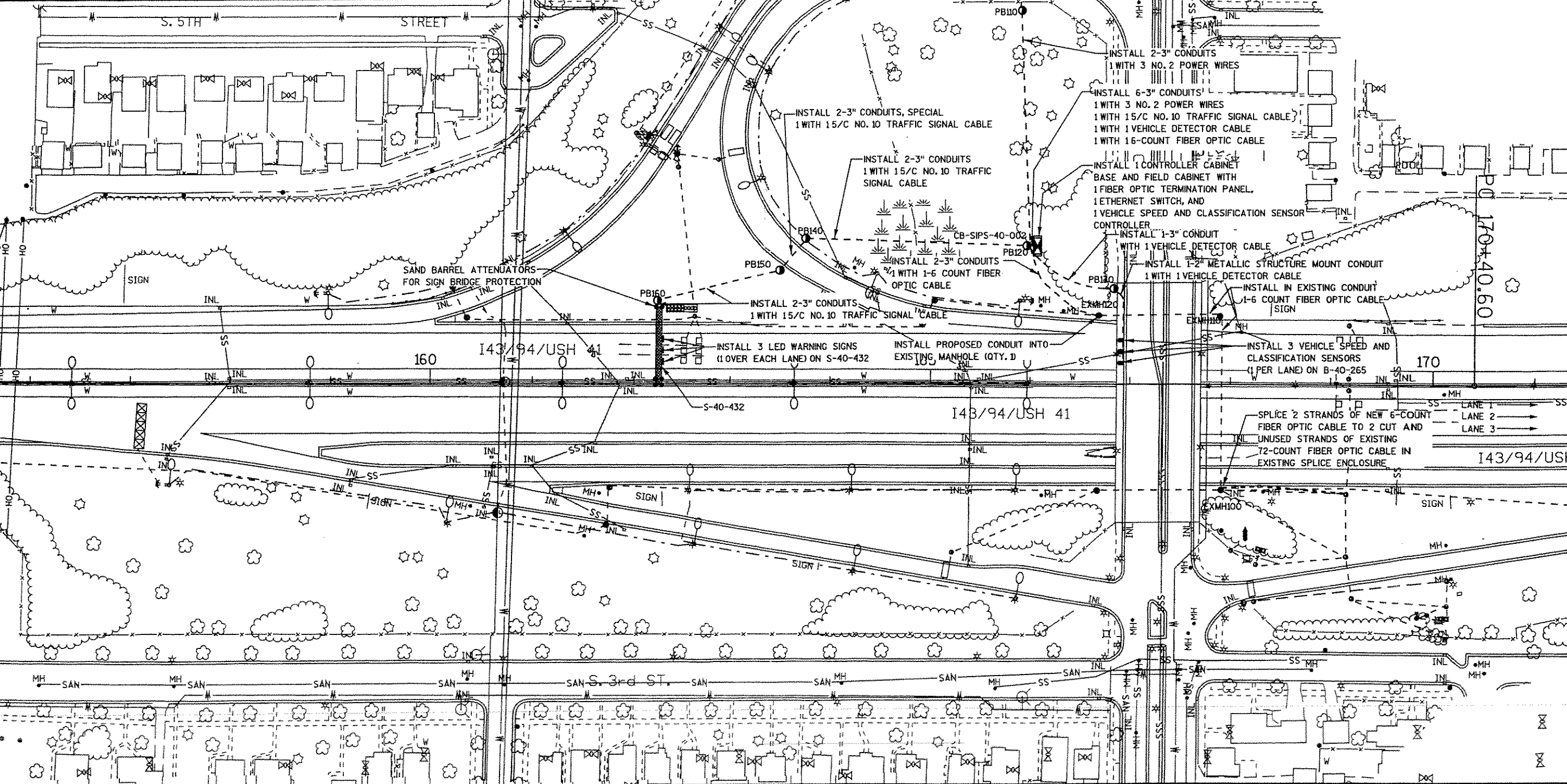
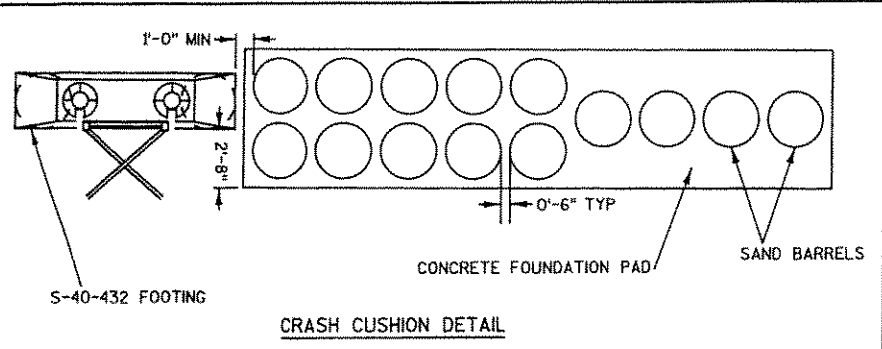
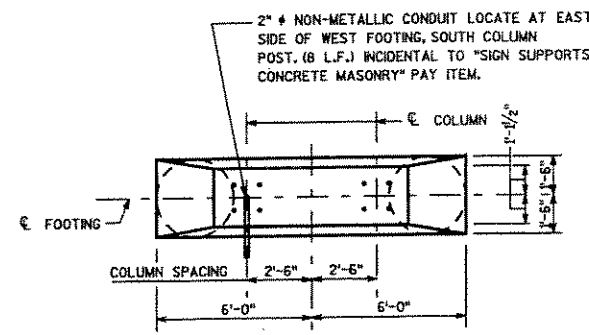


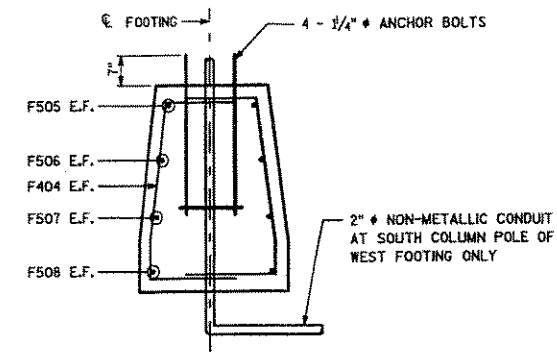
2

2

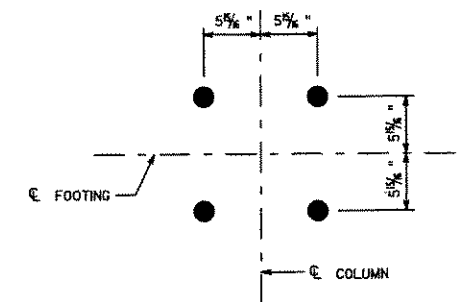




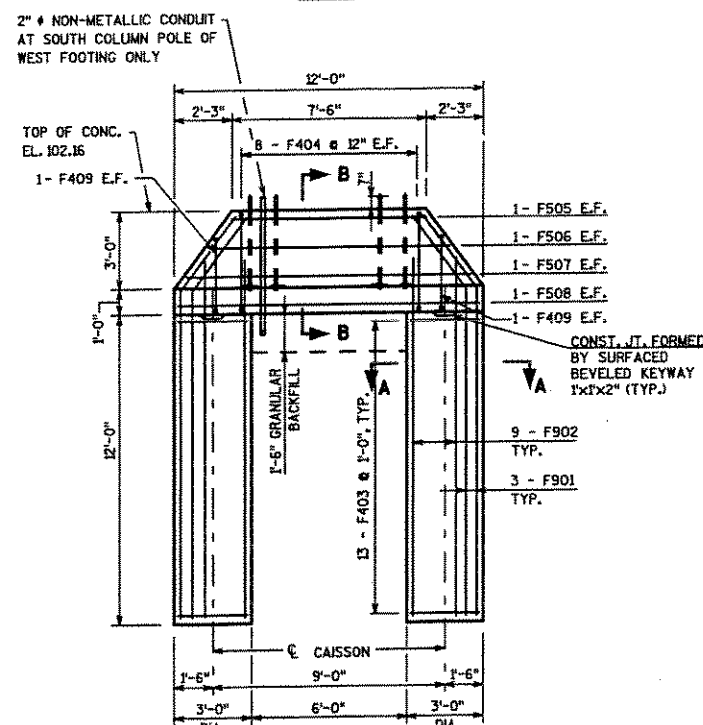
PLAN



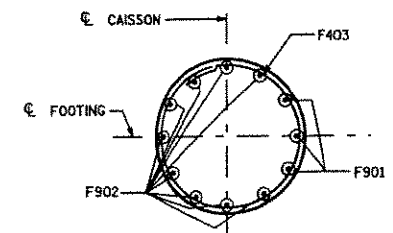
SECTION B-B



ANCHOR BOLT SETTING PLAN



ELEVATION



SECTION A-A

ESTIMATED QUANTITIES FOR WEST FOOTING

ITEM	UNIT	QUANTITY
SIGN SUPPORTS CONCRETE MASONRY	CY	11
SIGN SUPPORTS STEEL REINFORCEMENT HS	LB	1339
SIGN SUPPORTS STEEL COATED REINFORCEMENT HS	LB	208

NOTES

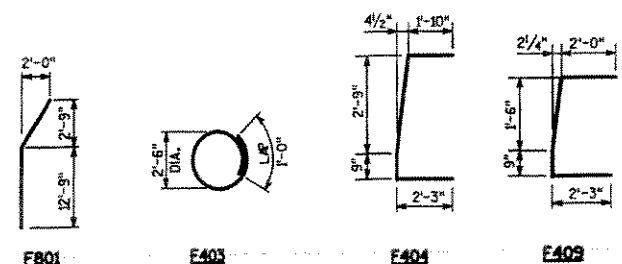
- BAR DIMENSIONS ARE OUT TO OUT OF BAR.
- THE FIRST OR FIRST TWO DIGITS OF A BAR MARK SIGNIFIES THE BAR SIZE.
- BAR STEEL REINFORCEMENT SHALL BE EMBEDDED 3" CLEAR FOR CAISSONS AND 2" CLEAR FOR FOOTING ABOVE CAISSONS.

ESTIMATE OF TOTAL QUANTITIES

ITEM	UNIT	QUANTITY
SIGN BRIDGE (STRUCTURE)	LS	1
SIGN SUPPORTS CONCRETE MASONRY	CY	41
SIGN SUPPORTS STEEL REINFORCEMENT HS	LB	5006
SIGN SUPPORTS STEEL COATED REINFORCEMENT HS	LB	878

WEST FOOTING BILL OF BARS *

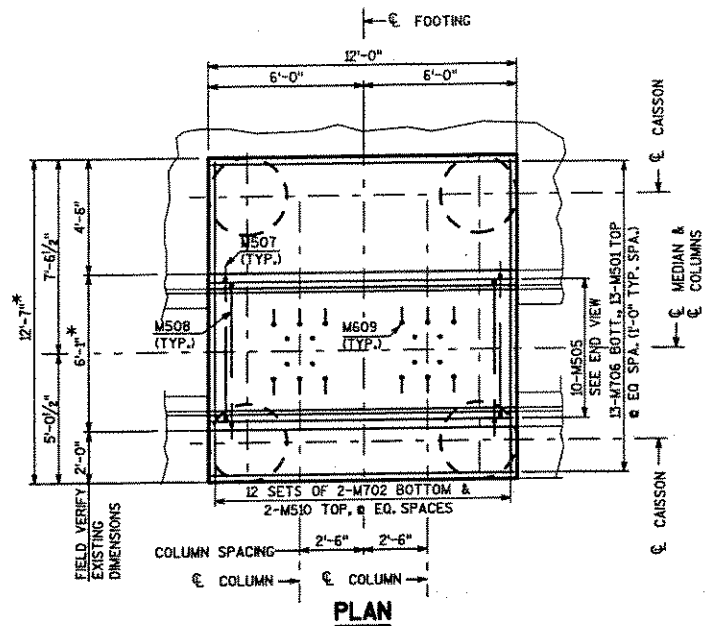
BAR MARK	COAT	NO. REQ'D	LENGTH	BENT	BAR SERIES	LOCATION
F901		6	16'-2"	X		CAISSON VERT.
F902		18	13'-10"			CAISSON VERT.
F403		26	8'-10"	X		CAISSON TIES
F404	X	16	7'-7"	X		CAP STIRRUPS
F505	X	2	7'-4"			CAP HORIZ.
F506	X	2	9'-3"			CAP HORIZ.
F507	X	2	11'-0"			CAP HORIZ.
F508	X	2	11'-6"			CAP HORIZ.
F409	X	4	6'-6"	X		CAP END STIRRUPS



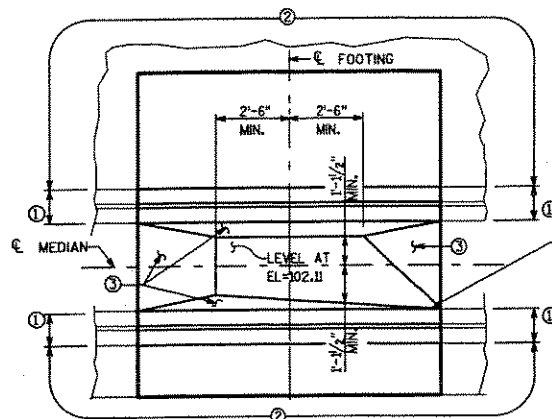
BAR BENDING DIAGRAMS

NO.	DATE	REVISION	BY
STATE OF WISCONSIN DEPARTMENT OF TRANSPORTATION STRUCTURES DESIGN SECTION			
STRUCTURE S-40-432			
CONST. SPEC. 2003	DRAWN BY JRB	PLANS CRD. JFA	
ESTIMATE OF QUANTITIES & WEST FOOTING			SHEET 2 OF 6

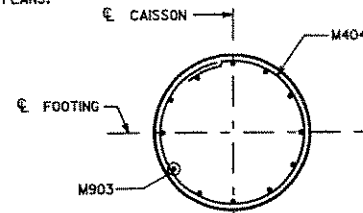
- ① MATCH ADJACENT BARRIER FACE, 1/4" EXPANSION MATERIAL BETWEEN.
- ② MATCH ADJACENT SHOULDER PAVEMENT WITH BITUMINOUS OVERLAY, SEE ROADWAY PLANS.
- ③ SMOOTH TRANSITION BETWEEN TOP OF BARRIER & TOP OF CONC. FOUNDATION.



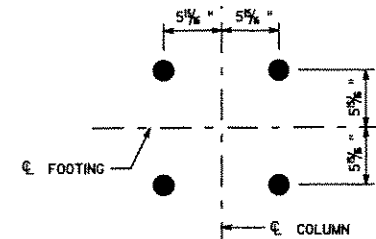
PLAN



MATCHING & TRANSITION PLAN



SECTION A-A



ANCHOR BOLT SETTING PLAN

ESTIMATE OF QUANTITIES FOR MEDIAN FOOTING

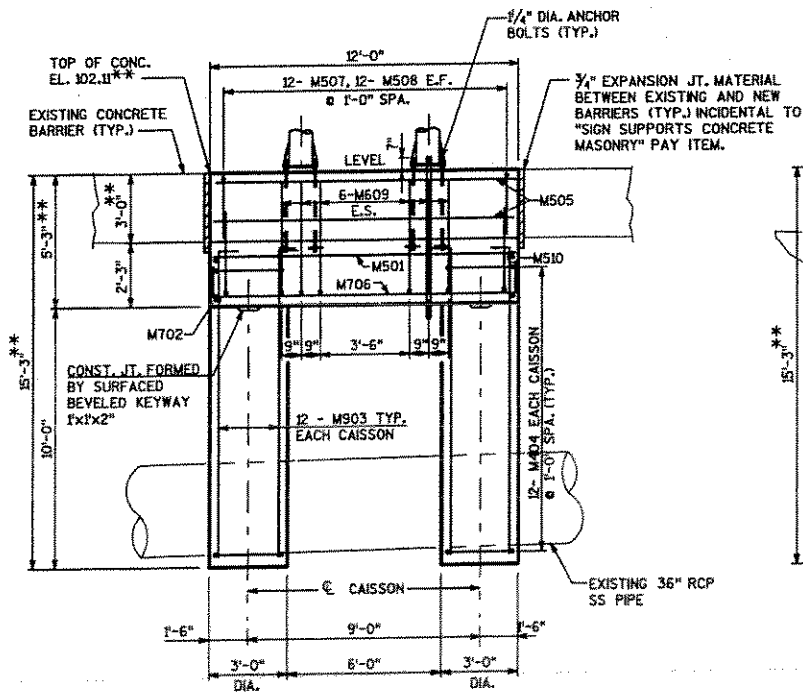
ITEM	UNIT	QUANTITY
SIGN SUPPORTS CONCRETE MASONRY	CY	30
SIGN SUPPORTS STEEL REINFORCEMENT HS	LB	3676
SIGN SUPPORTS STEEL COATED REINFORCEMENT HS	LB	670

NOTES

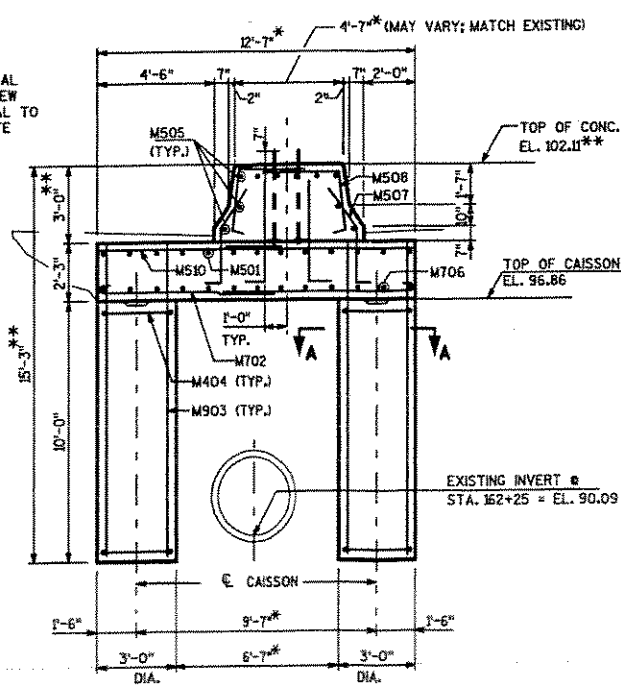
- BAR DIMENSIONS ARE OUT TO OUT OF BAR.
- THE FIRST OR FIRST TWO DIGITS OF A BAR MARK SIGNIFIES THE BAR SIZE.
- BAR STEEL REINFORCEMENT SHALL BE EMBEDDED 3" CLEAR FOR CAISSONS & 2" CLEAR FOR PORTION OF FOOTING ABOVE CAISSONS.
- FIELD VERIFY ELEVATIONS AND WIDTH OF MEDIAN BARRIER. ADJUST MEDIAN FOOTING TO TIE INTO WIDTH OF EXISTING BARRIER AND ROADWAY.
- REMOVAL OF EXISTING CONCRETE BARRIER & SHOULDER SHALL BE PAID FOR UNDER THE BID ITEMS "REMOVING ASPHALT SURFACE" AND "REMOVING CONCRETE BARRIER". SEE ROADWAY PLANS.
- CAISSONS SHALL BE CONSTRUCTED WITH SUITABLE CASING ACCORDING TO THE STANDARD SPECIFICATIONS TO ENSURE PROTECTION OF UTILITY AND TO AVOID SOIL DISPLACEMENT.
- BAR STEEL REINFORCEMENT SHALL BE EMBEDDED 3" CLEAR FOR CAISSONS & 2" CLEAR FOR FOOTING ABOVE CAISSONS.

MEDIAN FOOTING BILL OF BARS *

BAR MARK	COAT	NO. REQ'D	LENGTH	BENT	BAR SERIES	LOCATION
M501		13	11'-8"			FOOTING LONG. TOP
M702		24	8'-10"	X		FOOTING TRANS. BOTTOM
M903		48	13'-11"	X		CAISSON VERT
M404		48	8'-10"	X		CAISSON TIES
M505	X	10	11'-8"			BARRIER LONG.
M706		13	13'-10"	X		FOOTING LONG. BOTTOM
M507	X	24	5'-11"	X		BARRIER VERT.
M508	X	24	6'-2"	X		BARRIER VERT.
M609	X	12	5'-6"	X		ANCHOR VERT.
M510		24	7'-3"			FOOTING TRANS. TOP



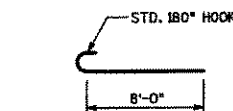
ELEVATION



END VIEW

* DIMENSIONS ARE BASED ON A MEASURED DISTANCE OF 6'-1" BETWEEN FRONT OF BARRIERS. CURRENT REINFORCEMENT ALLOWS TOLERANCE OF ±6" TO THIS ASSUMED DISTANCE.

** FIELD VERIFY TOP OF CONC. EL. @ H.P. ALONG TOP OF BARRIER. DIMENSIONS MAY VARY TO MEET EXISTING HIGH POINT.



M404

M702

M507

M508

M609

M706

M903

BAR BENDING DIAGRAMS

NO.	DATE	REVISION	BY
STATE OF WISCONSIN DEPARTMENT OF TRANSPORTATION STRUCTURES DESIGN SECTION			
STRUCTURE S-40-432			
CONST. SPEC. 2003	DESIGN BY	JRB	PLANS CHG. JFA
MEDIAN FOOTING			SHEET 3 OF 6