



ORD-19-03984  
CCF 191341

## Certificate of Appropriateness

Milwaukee Historic Preservation Commission/200 E. Wells Street/Milwaukee, WI 53202/phone 414-286-5712/fax 414-286-3004

**Property** 930 N. 31ST ST. Concordia Historic District  
**Description of work** Replace 3-pane slider window with new wood window to match original in west front gable end. Dimensions and design are attached. Repair siding as needed with new wood shingles.  
**Date issued** 12/6/2019 PTS ID 114725 COA: replace slider window to match original

In accordance with the provisions of Section 320-21 (11) and (12) of the Milwaukee Code of Ordinances, the Milwaukee Historic Preservation Commission has issued a certificate of appropriateness for the work listed above. The work was found to be consistent with preservation guidelines. The following conditions apply to this certificate of appropriateness:

Replacement windows will be all wood both inside and out. No vinyl, vinyl-clad, aluminum, aluminum-clad or fiberglass windows are permitted. New glass size must match the original glass size. Muntin profiles and sash heights must match originals.

All work must be done in a craftsman-like manner, and must be completed within one year of the date this certificate was issued. Staff must approve any changes or additions to this certificate before work begins. Work that is not completed in accordance with this certificate may be subject to correction orders or citations. If you require technical assistance, please contact Historic Preservation staff as follows: Phone: (414) 286-5712 E-mail: [hpc@milwaukee.gov](mailto:hpc@milwaukee.gov).

If permits are required, you are responsible for obtaining them from the Milwaukee Development Center. If you have questions about permit requirements, please consult the Development Center's web site, [www.milwaukee.gov/build](http://www.milwaukee.gov/build), or call (414) 286-8210.

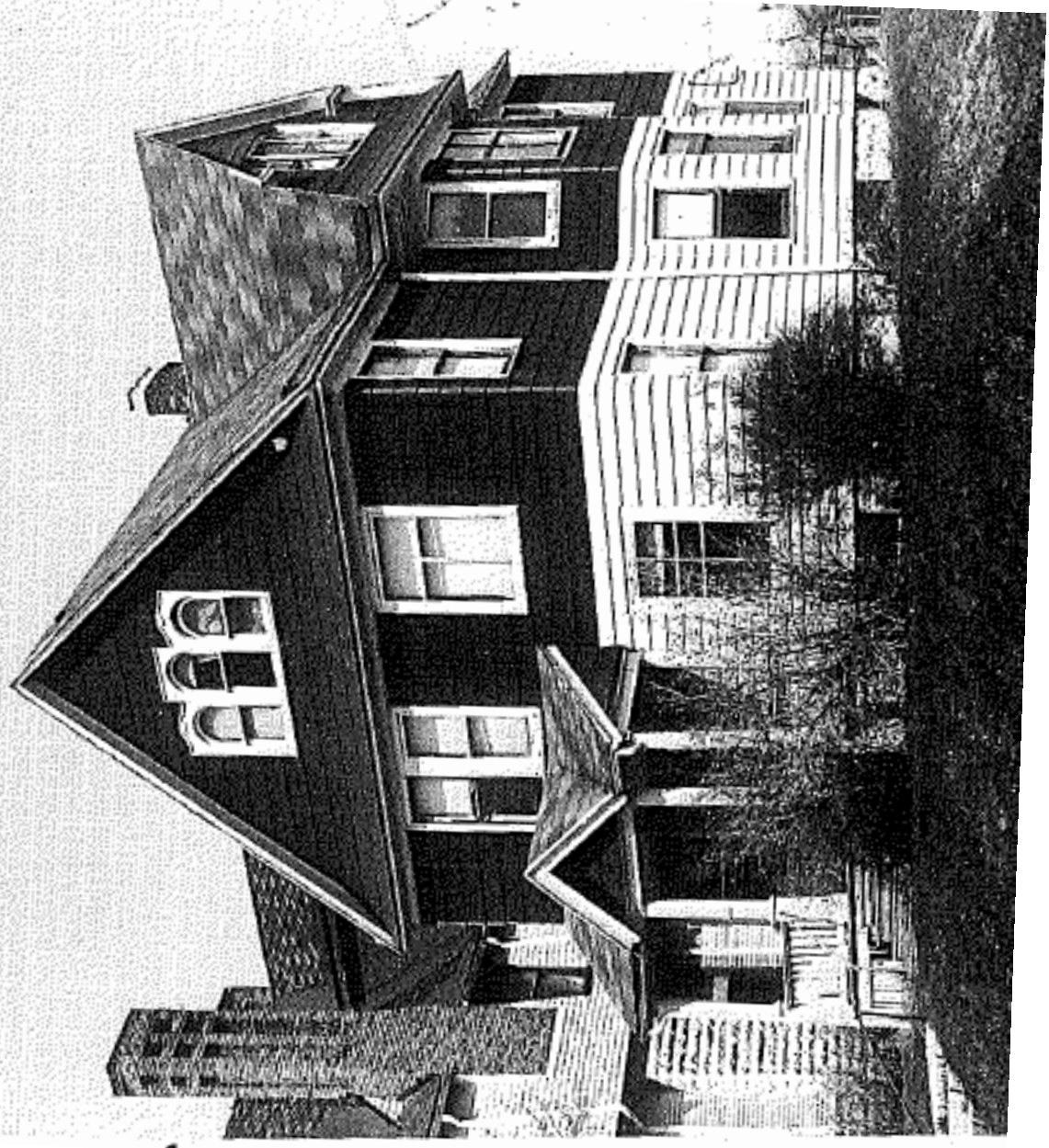
City of Milwaukee Historic Preservation Staff

Copies to: Development Center, Ald. Robert Bauman, Contractor , Inspector Matthew Jordan



Original three-part window in c. 1990 photo

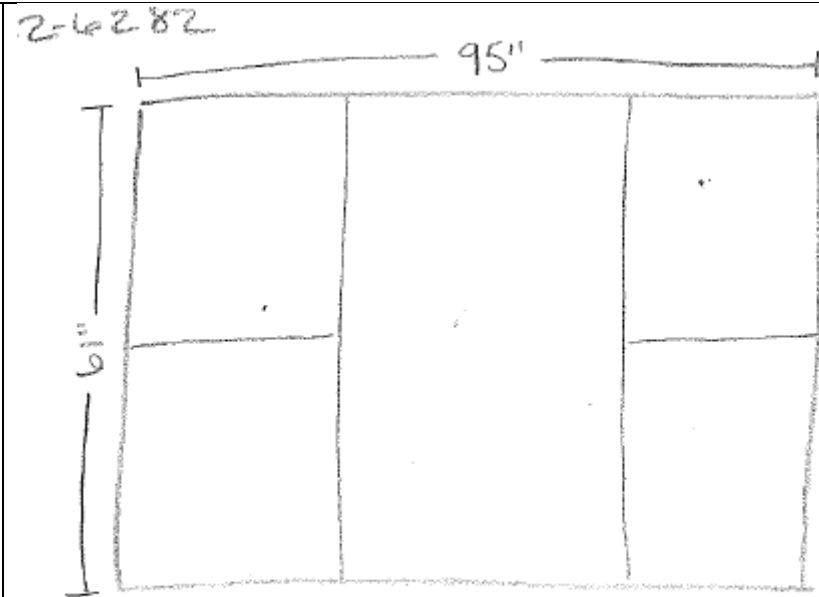
10 84



Front view of house in 1984 with original window



Replacement window design. Must include rolled molding detail at top of side windows per photos.



DIMENSIONS OF WINDOW TO BE INSTALLED BY MAD CITY.

Replacement window dimensions.