

N.W. 1/4 SEC. 29, T.7N., R.22E.

391

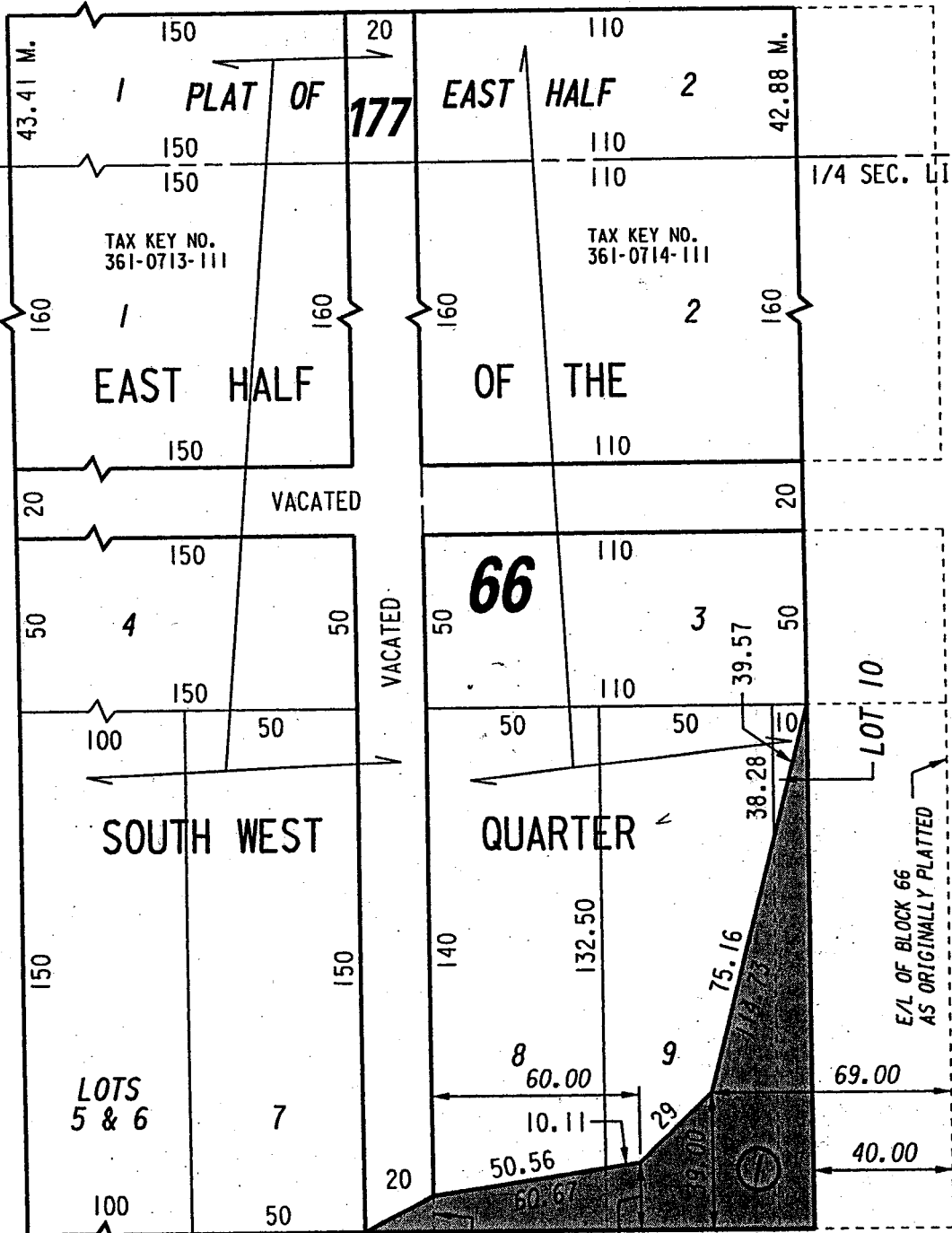
# W. Wisconsin Ave.

(80' R.O.W.)

St.

(70' R.O.W.)

N. James Lovell



St.

N. 6th

80

# W. Michigan St.

St.

S.W. 1/4 SEC. 29, T.7N., R.22E.

398

( MAP 1 OF 3 )

## EXHIBIT "A"

### FILE NO. 021137

#### INFRASTRUCTURE SERVICES DIVISION

MILWAUKEE, WISCONSIN

ASSIGNED TO: W.E. FUCHS

CH'K'D. BY: M.C. WILLIAMS

DRAWN BY: W.E.F.

DATE: JAN. 15, 2003

PROJECT/GRANT NO.: WK52337170

SCALE: 1" = 50'

APPROVED BY:

*Marcia Amshel*  
CENTRAL DRAFTING & RECORDS MANAGER

*Jeff Blumke*  
CITY ENGINEER

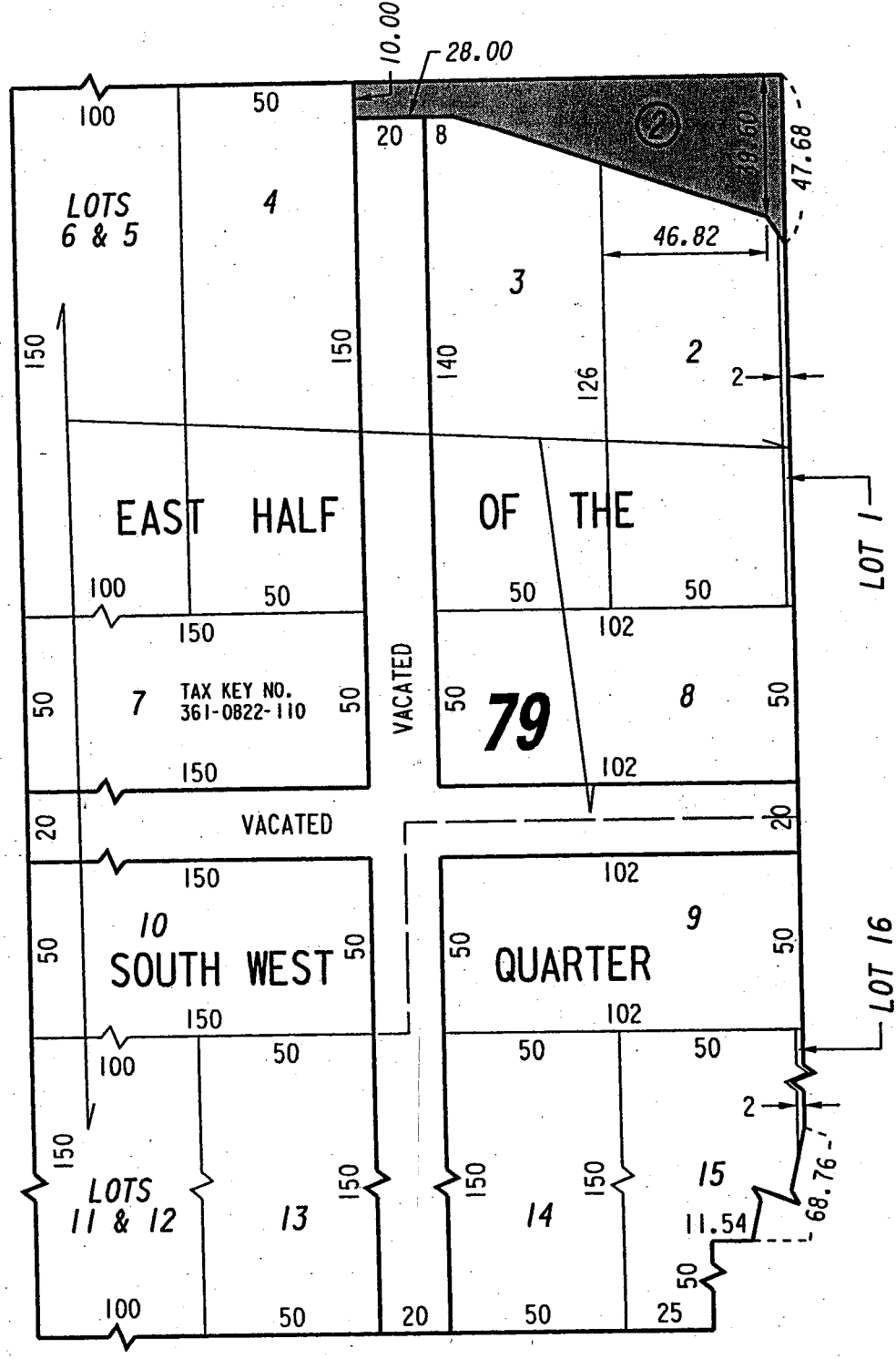
80 **W. Michigan St.**



**St.**

(70' R.O.W.)

**N. James Lovell**



**St.**

118

**N. 6th**

118

(80' R.O.W.)

**W. Clybourn St.**

( MAP 2 OF 3 )

EXHIBIT "A"

FILE NO. 021137

INFRASTRUCTURE SERVICES DIVISION

MILWAUKEE, WISCONSIN

ASSIGNED TO: W.E. FUCHS

CH'K'D. BY: M.C. WILLIAMS

DRAWN BY: W.E.F.

DATE: JAN. 15, 2003

PROJECT/GRANT NO.: WK52337170

SCALE: 1" = 50'

APPROVED BY:

*Maria Lindholm*  
CENTRAL DRAFTING & RECORDS MANAGER

*James P. ...*  
CITY ENGINEER

