

1 WEST ELEVATION
1/8" = 1'-0"



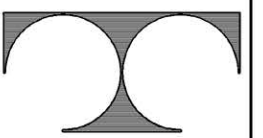
2 SOUTH ELEVATION
1/8" = 1'-0"



3 NORTH ELEVATION
1/8" = 1'-0"

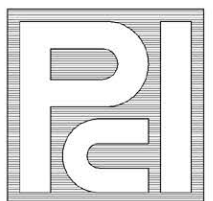


4 EAST ELEVATION
1/8" = 1'-0"



TDI ASSOCIATES, INC.
ARCHITECTS, ENGINEERS, PLANNERS

N8 W22350 JOHNSON DRIVE, SUITE B4
WAUKESHA, WISCONSIN 53186
PHONE 262-437-0400 FAX 262-437-0401



PROFESSIONAL
CONSULTANTS, INC.

300 COTTONWOOD AVE # 7
HARTLAND, WISCONSIN 53029
(262) 367-6080

RUSS DARROW NISSAN
METRO AUTO PARK

WEST METRO BOULEVARD
MILWAUKEE, WISCONSIN

TDI ASSOCIATES, INC
All Rights Reserved

OWNERSHIP OF DOCUMENTS

This document, and the ideas and design incorporated herein, as an instrument of professional service, is the sole property of TDI Associates, Inc., and is not to be used in whole or in part for any other project or purpose without the expressed written authorization of TDI Associates, Inc.

Sheet Title
ELEVATIONS

Issued For: _____ Date: _____

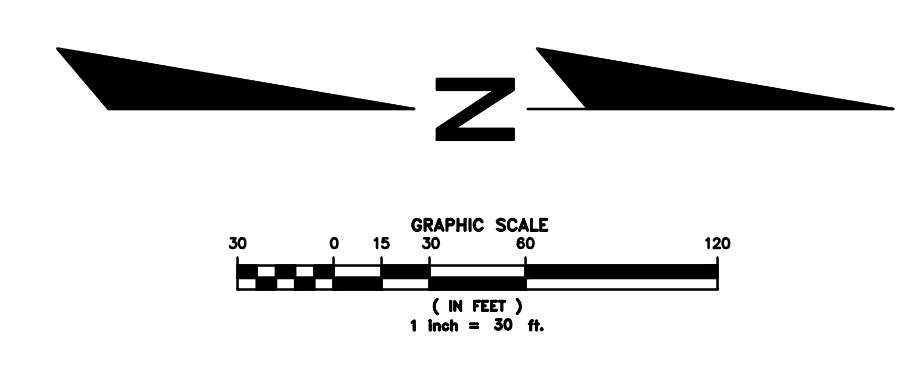
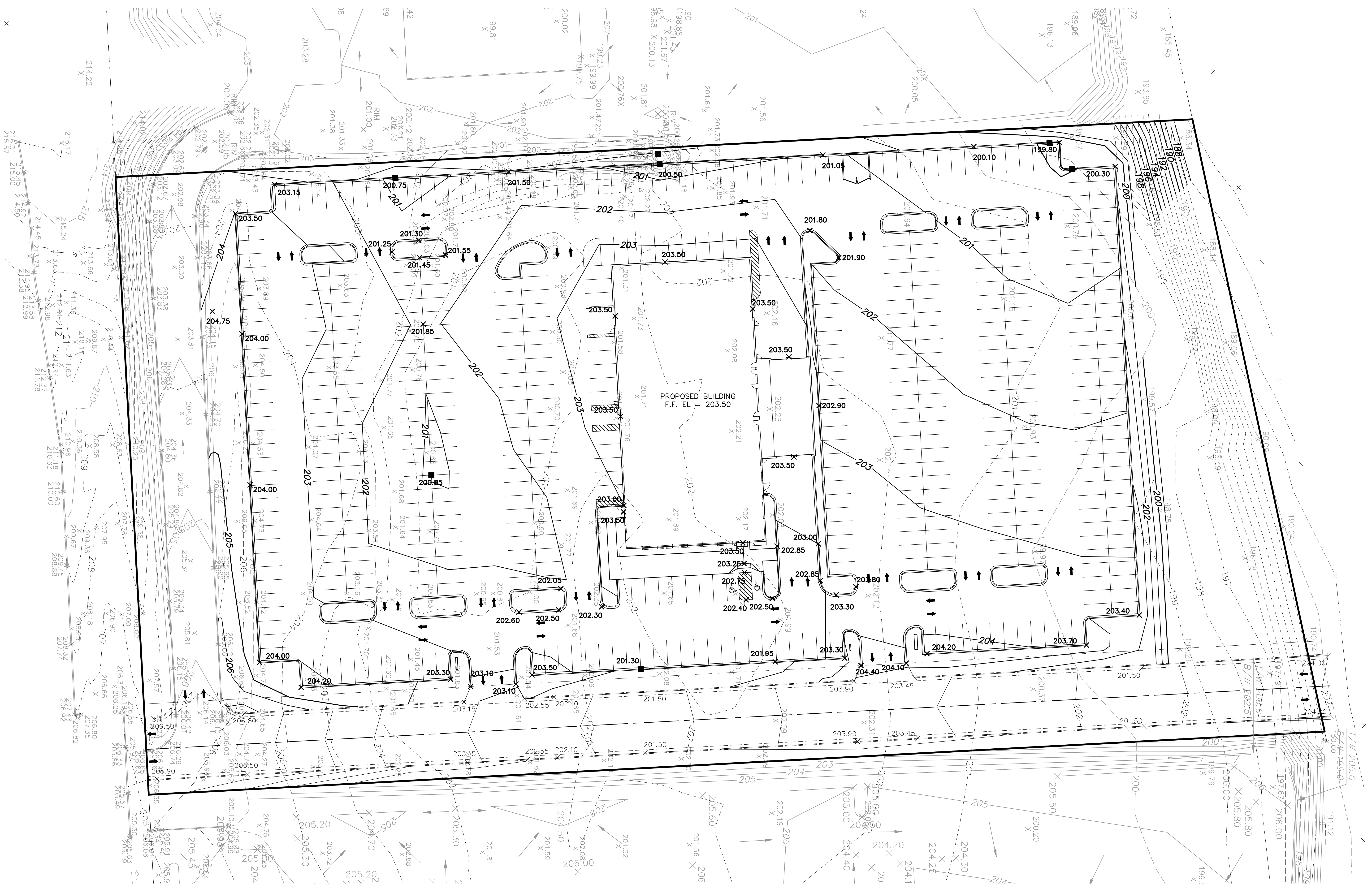
Date: 10-10-2011

Job NO.: 11172.000

Drawn By: RJH

Sheet No.

A2.1



| DATE | DESCRIPTION |
|------|-------------|
| | |
| | |
| | |
| | |
| | |

R.A. Smith National
*Beyond Surveying
 and Engineering*

16745 W. Bluemound Road, Brookfield, WI 53005-5938
 262-781-0000 Fax: 262-781-8466, www.rasmithnational.com

**RUSS DARROW NISSAN
 MILWAUKEE, WI**

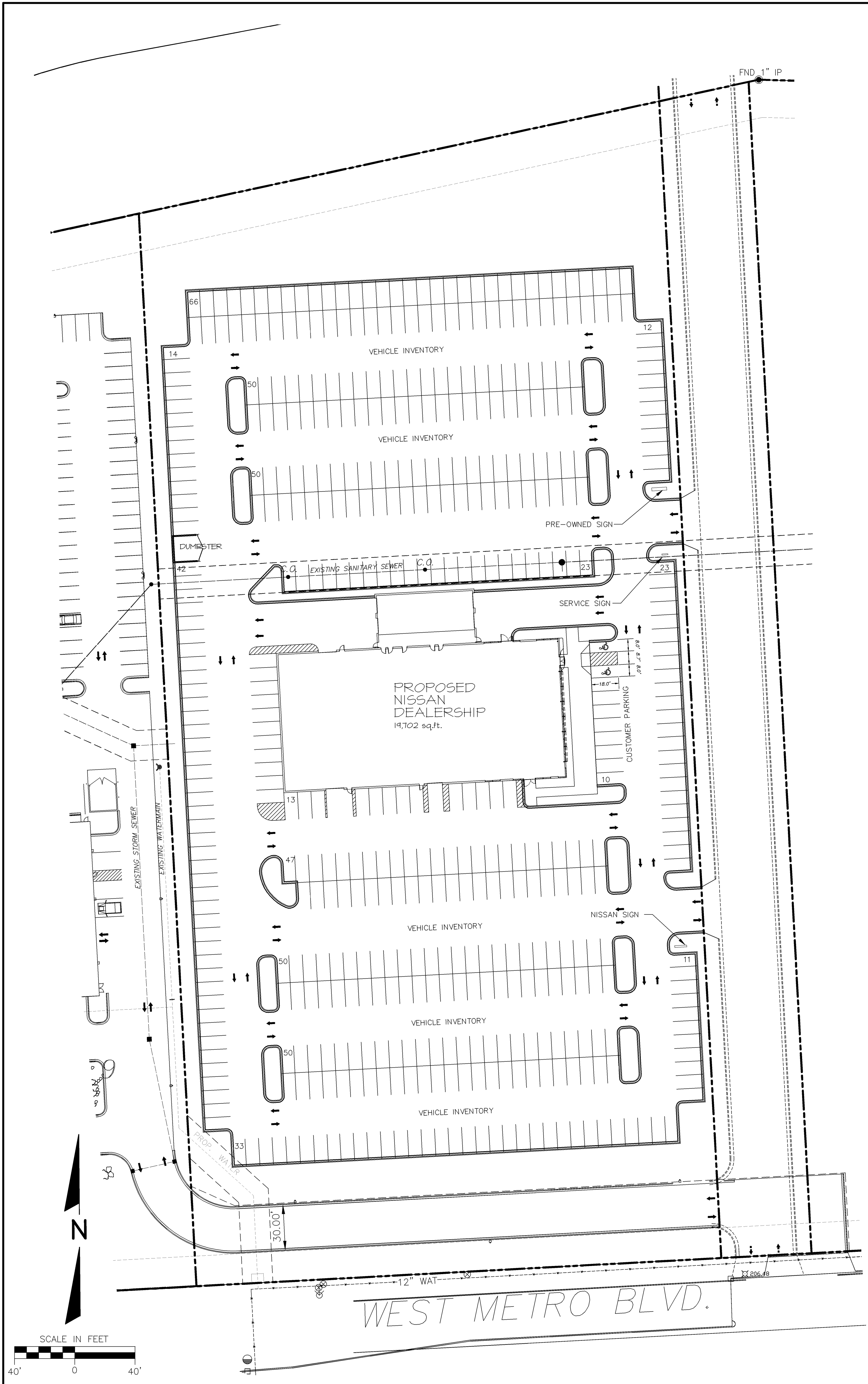
**PRELIMINARY
 GRADING PLAN**

© COPYRIGHT 2008
 R.A. Smith National, Inc.

DATE: 09-23-11
 SCALE: 1" = 30"
 JOB NO. 3020273.04
 PROJECT MANAGER:
 RYAN J. LANCOUR, P.E.
 DESIGNED BY: JAH
 CHECKED BY: RJL

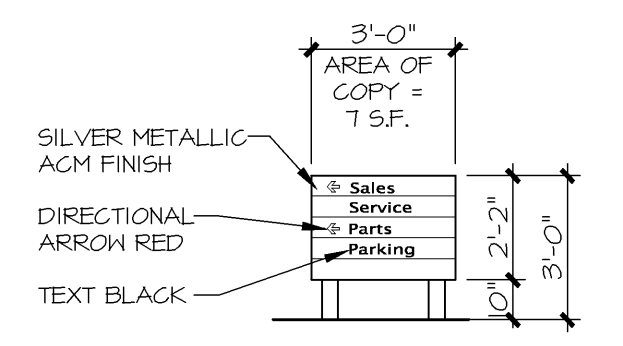
SHEET NUMBER
 CE-2

Plot File: 3020273.04.dwg User: rjl Date: 09/23/11 11:02:52.00 AM PLOT

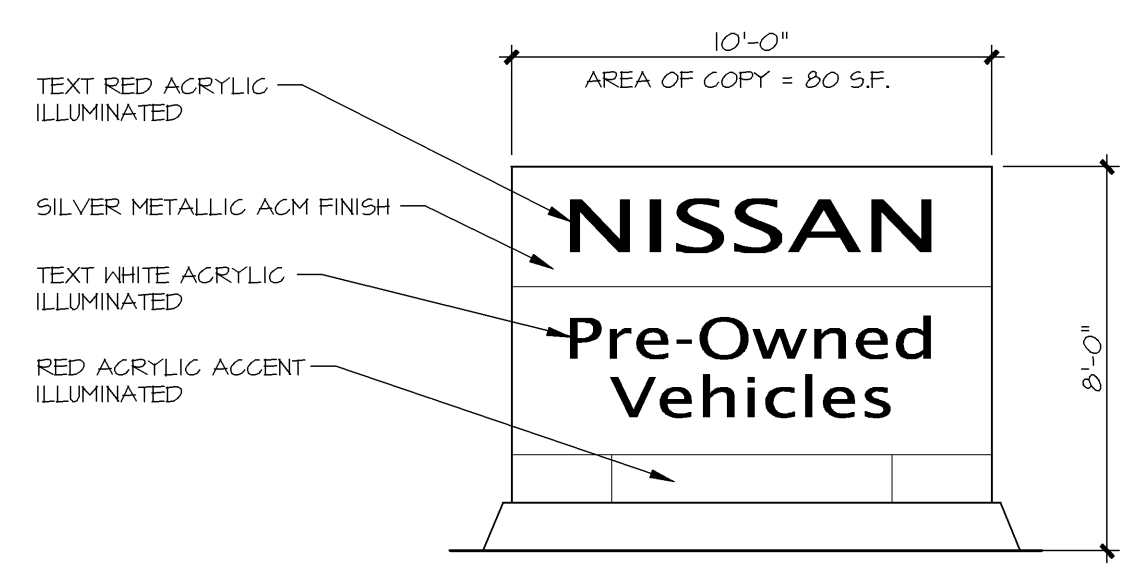


| PARKING SPACE TABULATION | |
|-------------------------------|-----------|
| CUSTOMER PARKING= | 10 SPACES |
| INVENTORY / SERVICE PARKING = | 484 S.F. |
| TOTAL PARKING = | 494 S.F. |

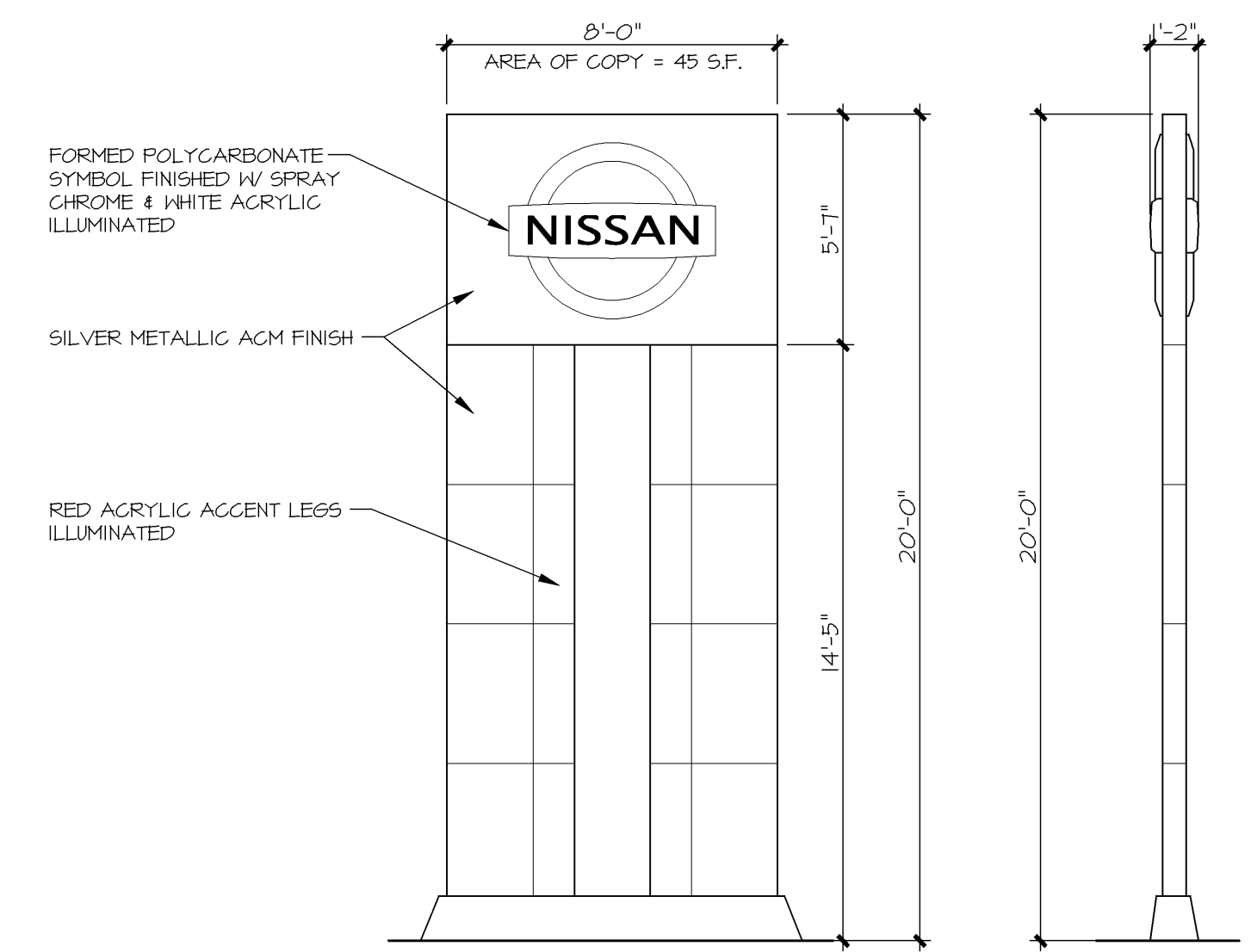
| SIGN COPY AREA TABULATION | |
|----------------------------|----------|
| SERVICE SIGN COPY AREA= | 7 S.F. |
| PRE-OWNED SIGN COPY AREA = | 80 S.F. |
| NISSAN SIGN COPY AREA = | 45 S.F. |
| TOTAL COPY AREA = | 132 S.F. |



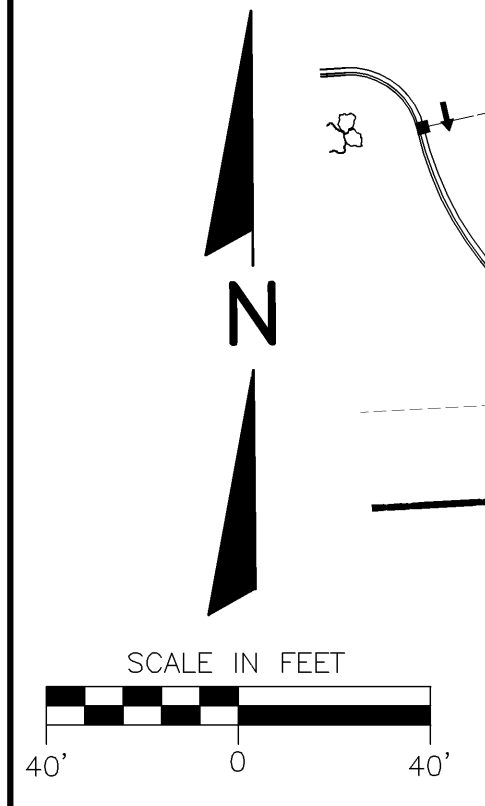
1 SERVICE MONUMENT SIGN
1/4" = 1'-0"



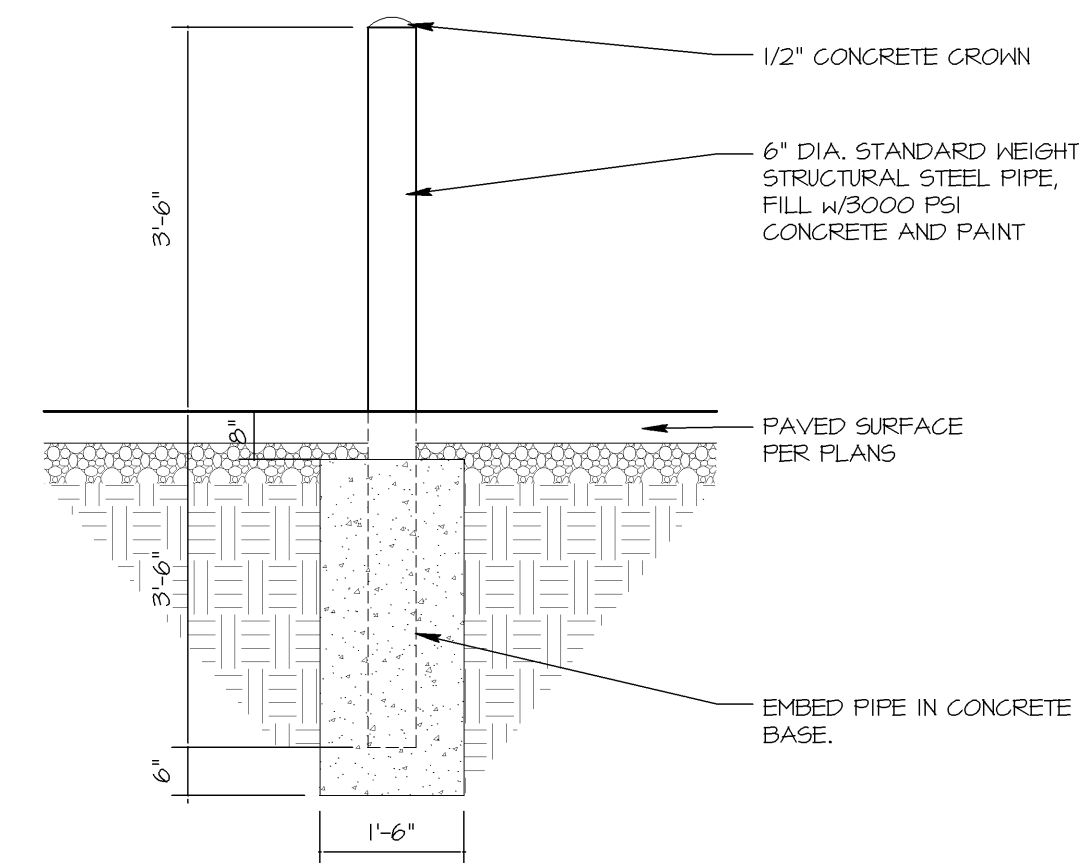
2 PRE-OWNED SIGN
1/4" = 1'-0"



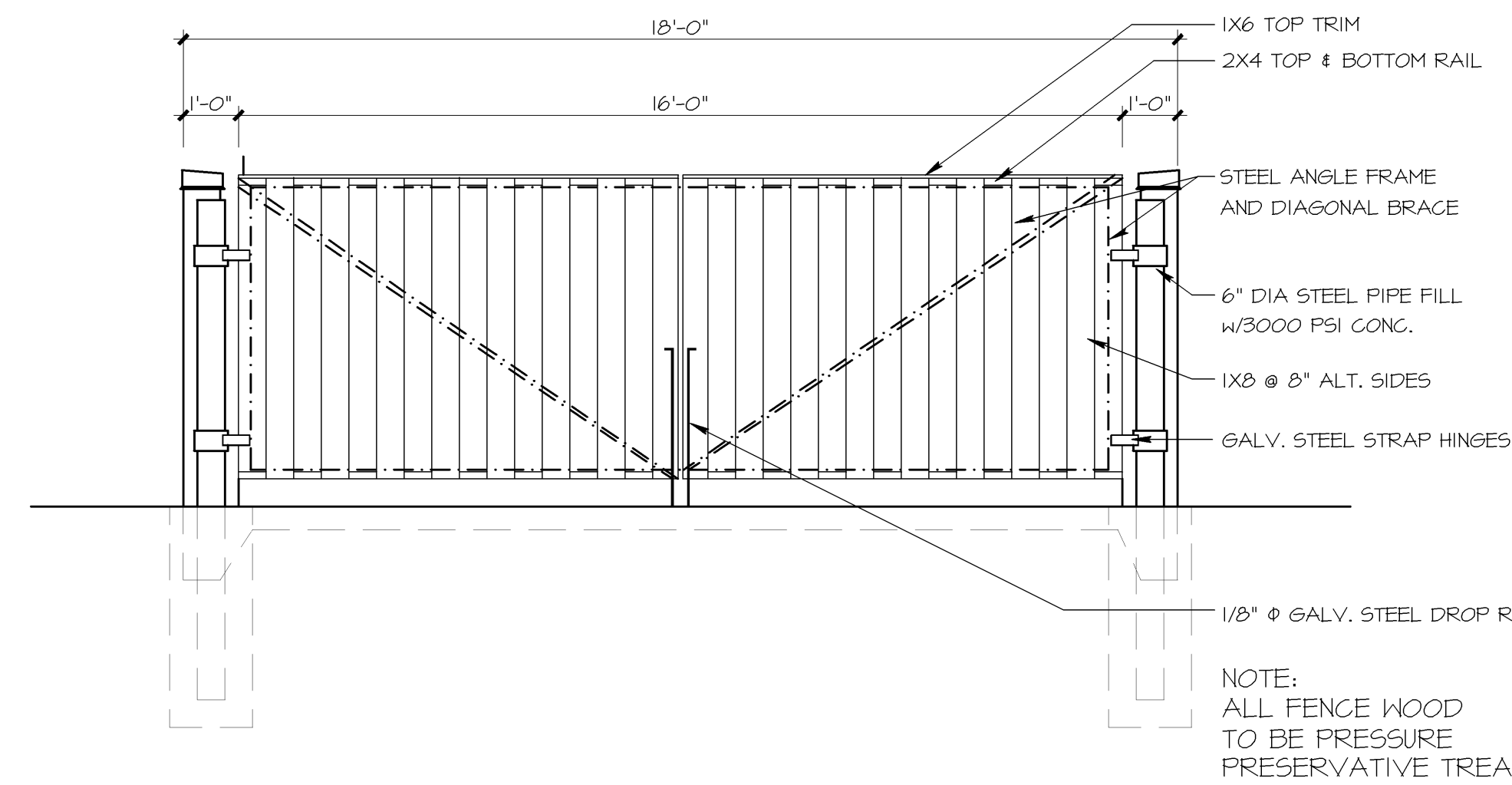
3 NISSAN SIGN
1/4" = 1'-0"



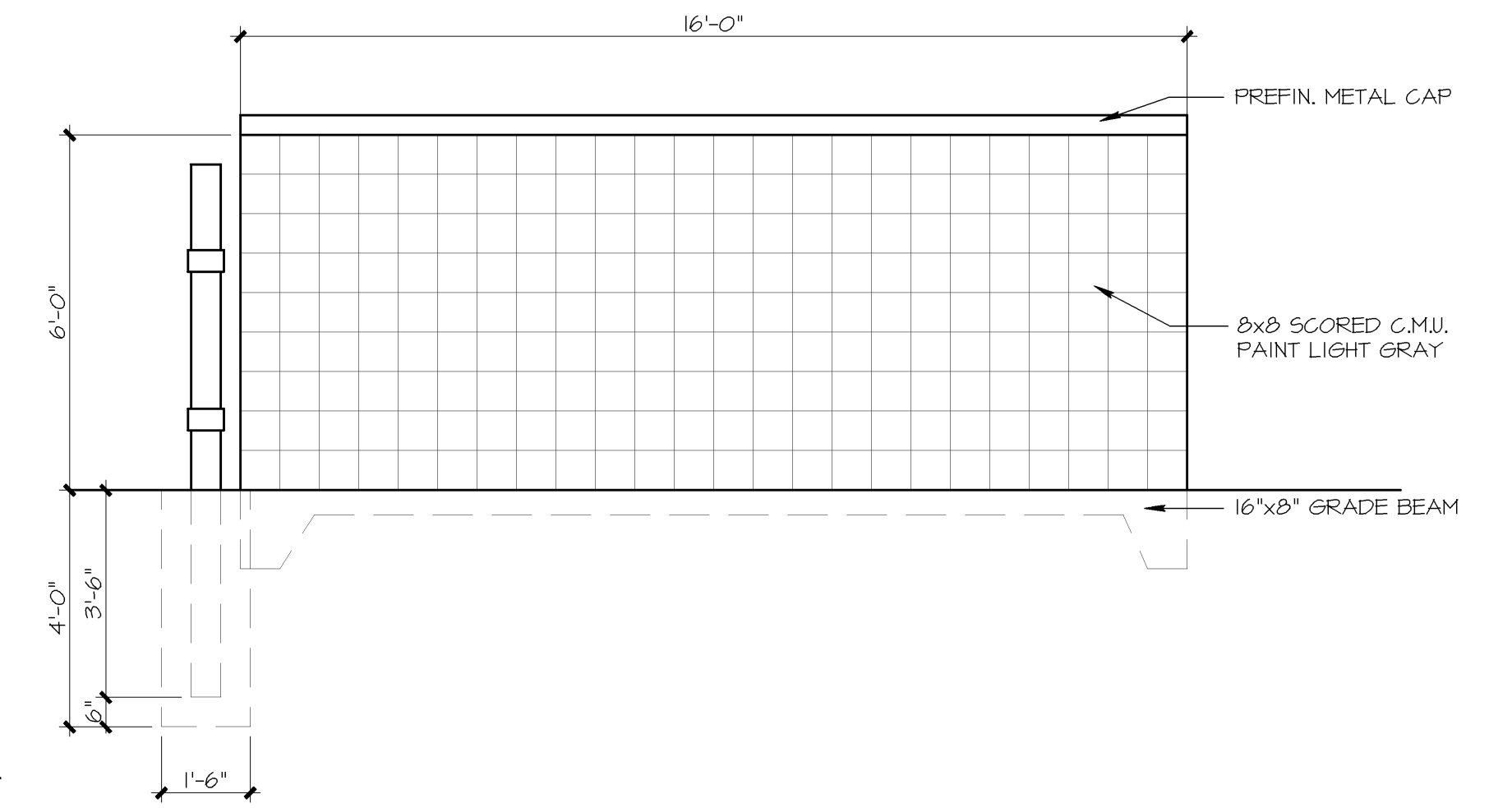
| REVISIONS: | | TDI ASSOCIATES, INC | | OWNERSHIP OF DOCUMENTS | |
|------------------------------|------|--|--|--|--|
| NOTE | DATE | All Rights Reserved | | This document, and the ideas and design incorporated herein, as an instrument of professional service, is the sole property of TDI Associates, Inc. and is not to be used in whole or in part for any other project or purpose without the expressed written authorization of TDI Associates, Inc. | |
| | | NS W2250 JOHNSON DRIVE, SUITE B4 WALWISHA, WISCONSIN 53186 PHONE 262-437-0400 FAX 262-437-0401 | |  TDI ASSOCIATES, INC. ARCHITECTS, ENGINEERS, PLANNERS | |
| | | CITY OF MILWAUKEE, WI DARROW NISSAN | | | |
| SITE DEVELOPMENT PLAN | | | | | |
| SCALE: 1"= 40'-0" | | JOB NO: II-172.000 | | DATE: 09-22-11 | |
| DESIGNED BY: ROB | | DRAWN BY: ROB | | CHECKED BY: | |
| APPROVED BY: | | ENGINEER | | DATE | |
| | | | | SHEET SD-1.0 | |



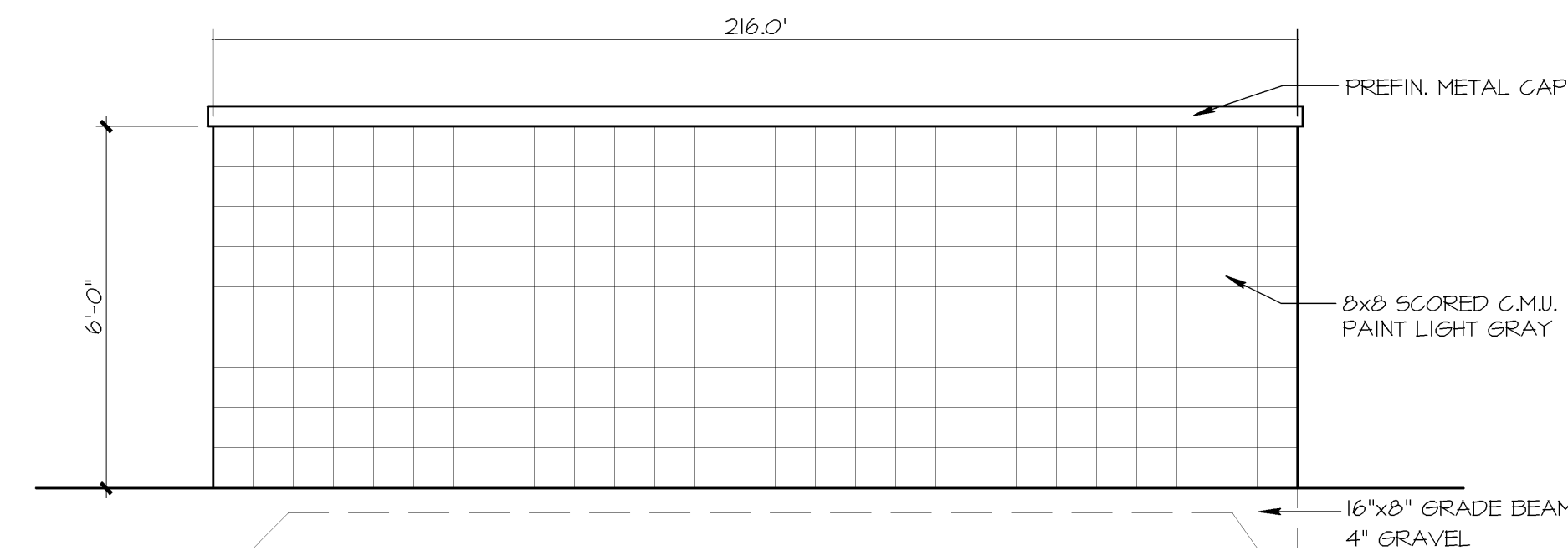
⑤ PIPE BOLLARD DETAIL
3/8" = 1'-0"



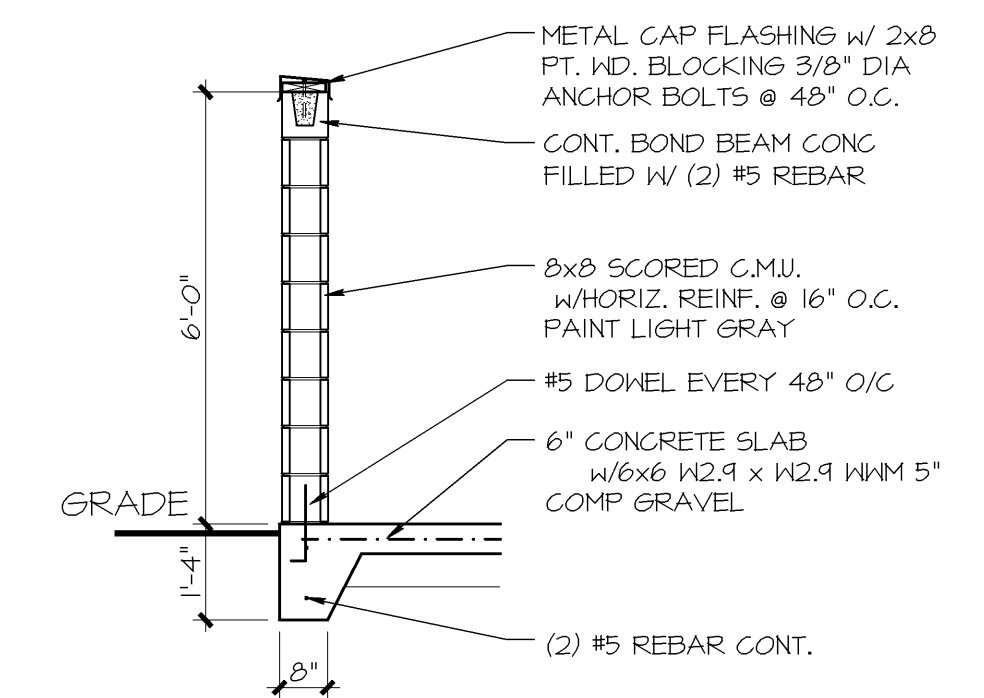
③ DUMPSTER ENCLOSURE FRONT
3/8" = 1'-0"



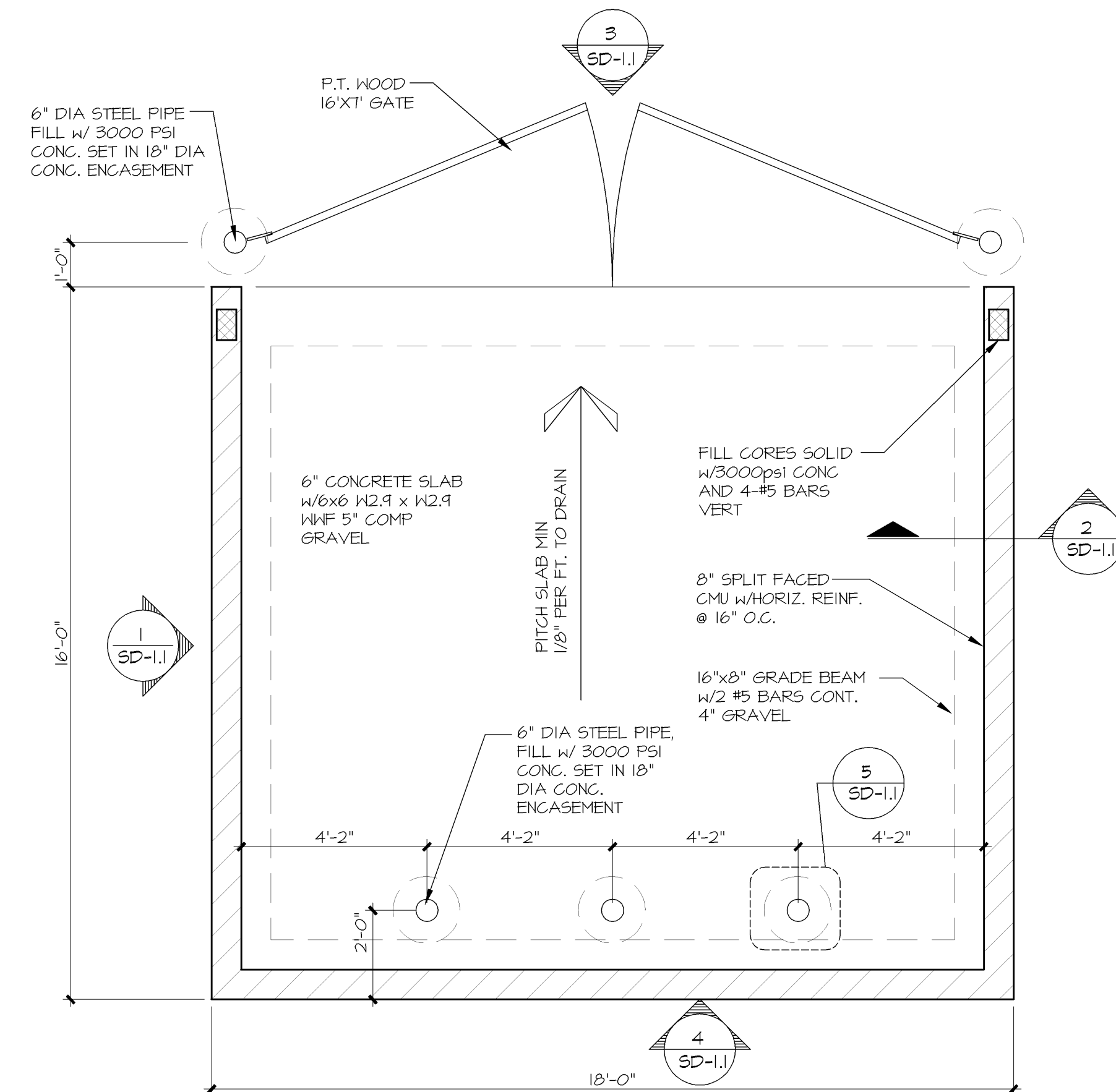
① DUMPSTER ENCLOSURE SIDE
3/8" = 1'-0"



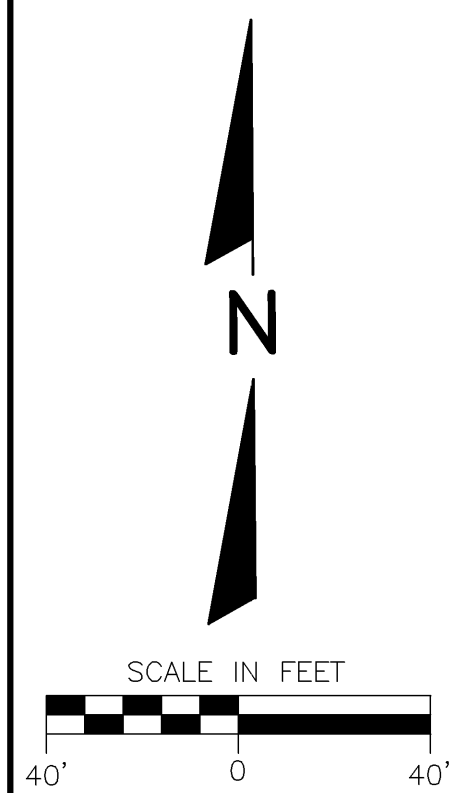
④ DUMPSTER ENCLOSURE REAR
3/8" = 1'-0"



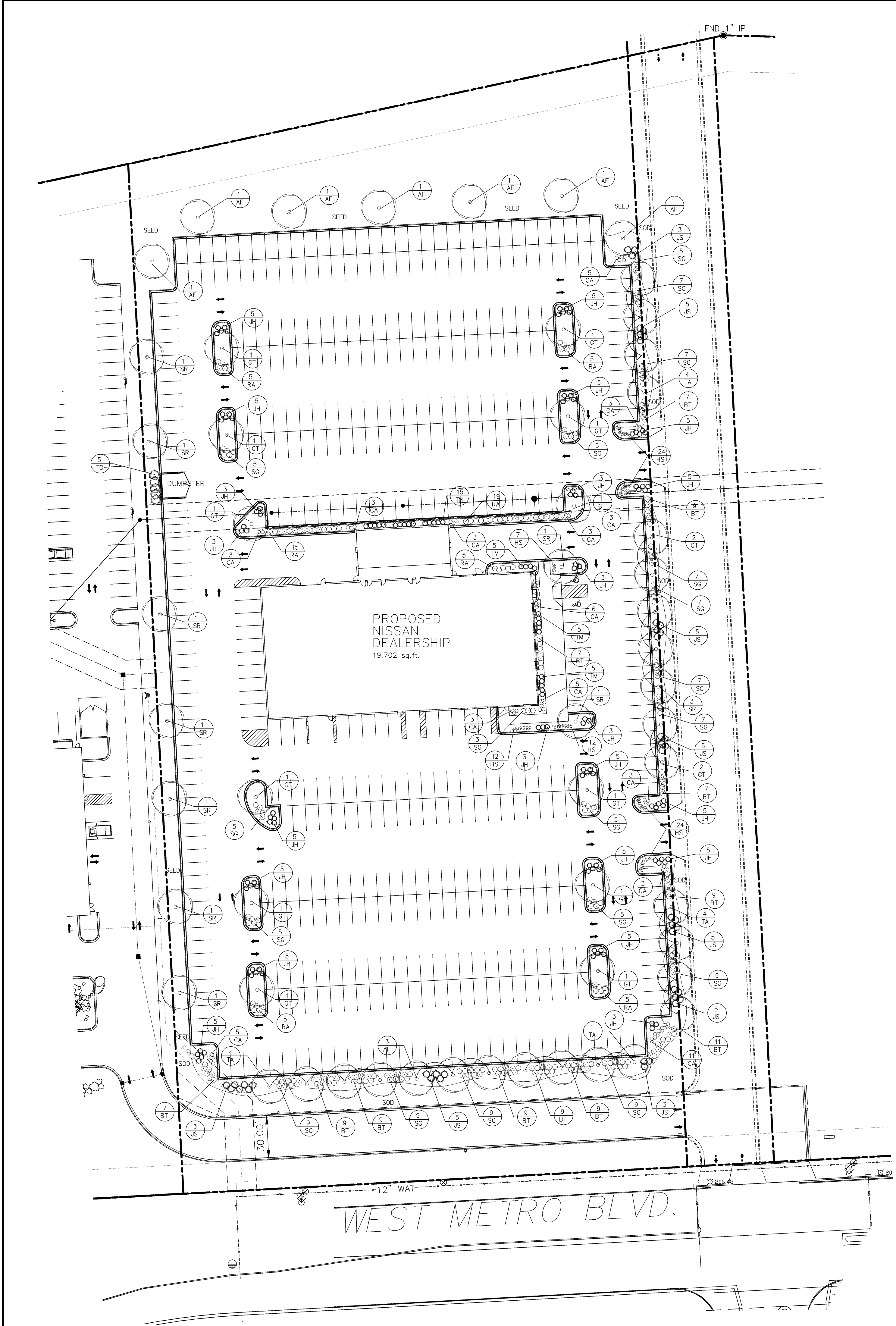
② DUMPSTER SECTION
3/8" = 1'-0"



⑤ DUMPSTER ENCLOSURE PLAN
3/8" = 1'-0"



| REVISIONS: | | T&D ASSOCIATES, INC. All Rights Reserved N8 W2250 JOHNSON DRIVE, SUITE B4 WALWISHA, WISCONSIN 53186 PHONE 262-437-0400 FAX 262-437-0401 |  ARCHITECTS, ENGINEERS, PLANNERS | OWNERSHIP OF DOCUMENTS This document, and the ideas and design incorporated herein, are the sole property of T&D Associates, Inc., and are not to be used in whole or in part for any other project or purpose without the expressed written authorization of T&D Associates, Inc. |
|------------|------|--|--|---|
| NOTE | DATE | | | |
| | | | | |
| | | | | |
| | | | | |
| | | | | |
| | | CITY OF MILWAUKEE, WI DARROW NISSAN | | |
| | | SITE DEVELOPMENT DETAILS | | |
| | | SCALE: 1" = 40'-0" | JOB NO: 11-172.000 | DATE: 09-22-11 |
| | | DESIGNED BY: ROB | DRAWN BY: ROB | CHECKED BY: |
| | | APPROVED BY: | | |
| | | ENGINEER | DATE | SHEET SD-1.1 |



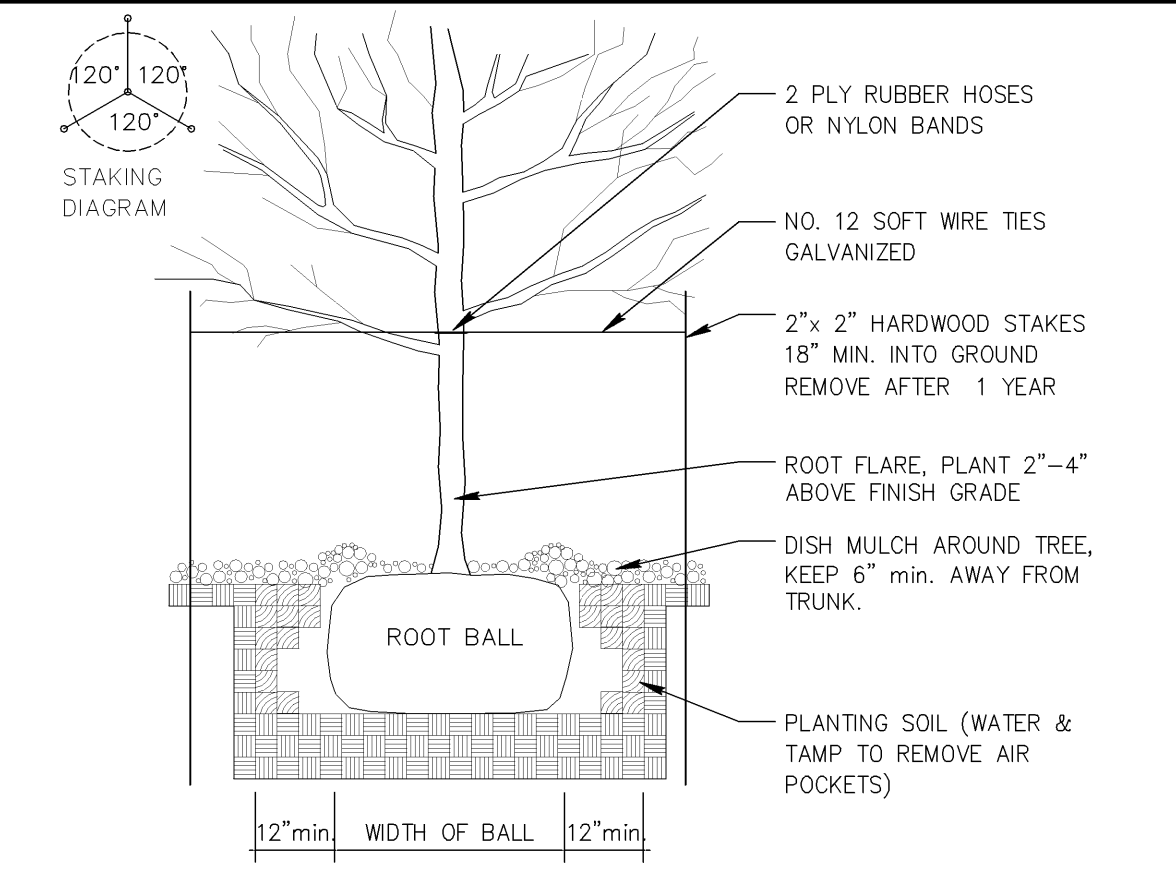
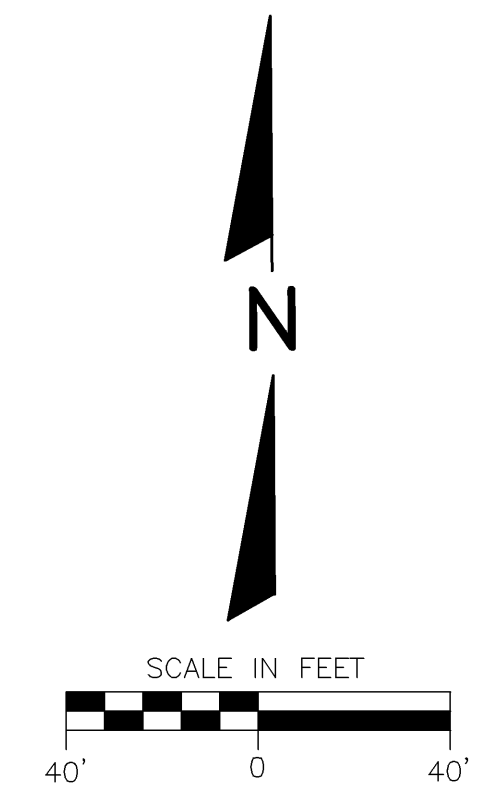
| PLANT SCHEDULE (CONTRACTOR RESPONSIBLE FOR VERIFYING PLANT QUANTITIES) | | | | | | | |
|--|--------|--|-----------------------|-------------|----------|--------|------------------|
| QUANTITY | SYMBOL | BOTANICAL NAME | COMMON NAME | MATURE SIZE | PLANTING | SIZE | TYPE |
| 9 | AF | Acer x freemanii 'Autumn Blaze' | Autumn Blaze Maple | 45'-60' | B / B | 2 1/2" | Shade Tree |
| 16 | GT | Gleditsia triacanthos 'Impcole' | Imperial Honeylocust | 35'-40' | B / B | 2 1/2" | Shade Tree |
| 16 | TA | Tilia americana 'Redmond' | Redmond Linden | 35'-40' | B / B | 2 1/2" | Shade Tree |
| 12 | SR | Syringa reticulata 'Ivory Silk' | Ivory Silk Tree Lilac | 15'-20' | B / B | 2" | Ornamental Tree |
| 5 | TO | Thuja occidentalis 'Halmstrup' | Halmstrup Arborvitae | 12'-15' | B / B | 5' | Evergreen Tree |
| 84 | BT | Berberis thunbergii 'Rose Glo' | Rose Glo Barberry | 3' x 3' | POT | 2 Gal | Deciduous Shrub |
| 59 | RA | Rhus aromatica 'Gro-low' | Grow Low Sumac | 1'-2' | POT | 2 Gal | Deciduous Shrub |
| 125 | SG | Spiraea x 'Goldflame' | Goldflame Spirea | 3' x 3' | POT | 2 Gal | Deciduous Shrub |
| 96 | JH | Juniperus horizontalis 'Blue Chip' | Blue Chip Juniper | 1' x 4' | POT | 2 Gal | Evergreen Shrub |
| 47 | JS | Juniperus sabinia 'Broadmoor' | Broadmoor Juniper | 2' x 4' | POT | 5 Gal | Evergreen Shrub |
| 30 | TM | Taxus x media 'Runyan' | Runyan Yew | 3' x 5' | POT | 18" | Evergreen Shrub |
| 59 | CA | Calamagrostis oculiflora 'Karl Foerster' | Karl Foerster Grass | 42"-48" | POT | 1 Gal | Ornamental Grass |
| 79 | HS | Hemerocallis x 'Stella D'oro' | Stella D'oro Daylily | 18"-24" | POT | 1 Gal | Perennial |

GENERAL NOTES:

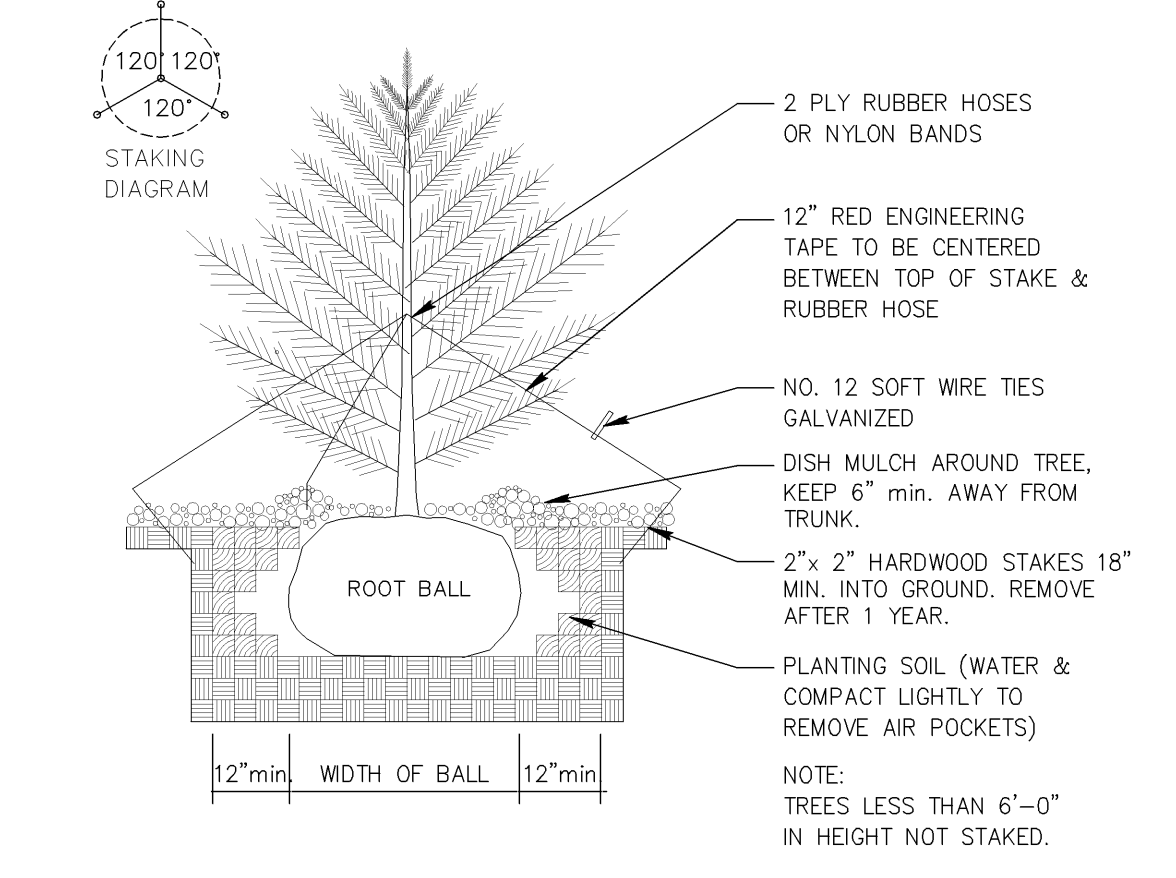
- 1.) ALL FINISHED GRADES TO BE 1" BELOW TOP OF CURBS OR PAVEMENT.
- 2.) BACKFILL AND GRADE ALL PLANTING AREAS WITH MIN. 12" BLENDED TOPSOIL.
- 3.) ALL LAWN AREAS TO BE SEED UNLESS OTHERWISE NOTED.
- 4.) ALL PLANT MATERIAL SHALL CONFORM TO AMERICAN STANDARD FOR NURSERY STOCK.
- 5.) ALL TREES NOT IN A PLANTING BED SHALL BE MULCHED WITH A MINIMUM 1' RADIUS FOR EACH 1 INCH CALIPER. USE SHREDDED HARDWOOD MULCH AT 2" DEPTH.
- 6.) PROVIDE MIN. 2 YEAR WARRANTY ON ALL PLANT MATERIAL.
- 7.) ALL PLANTING BEDS TO BE EDGED WITH COMMERCIAL GRADE PLASTIC EDGING.
- 8.) ALL PLANTING BEDS TO BE MULCHED AT 2" DEPTH WITH STONE MULCH

SEED MIX # 1 (Lawn)
 35% KENTUCKY BLUEGRASS
 20% CREEPING RED FESCUE
 20% IMPROVED HARD FESCUE
 25% IMPROVED FINE PERENNIAL RYEGRASS

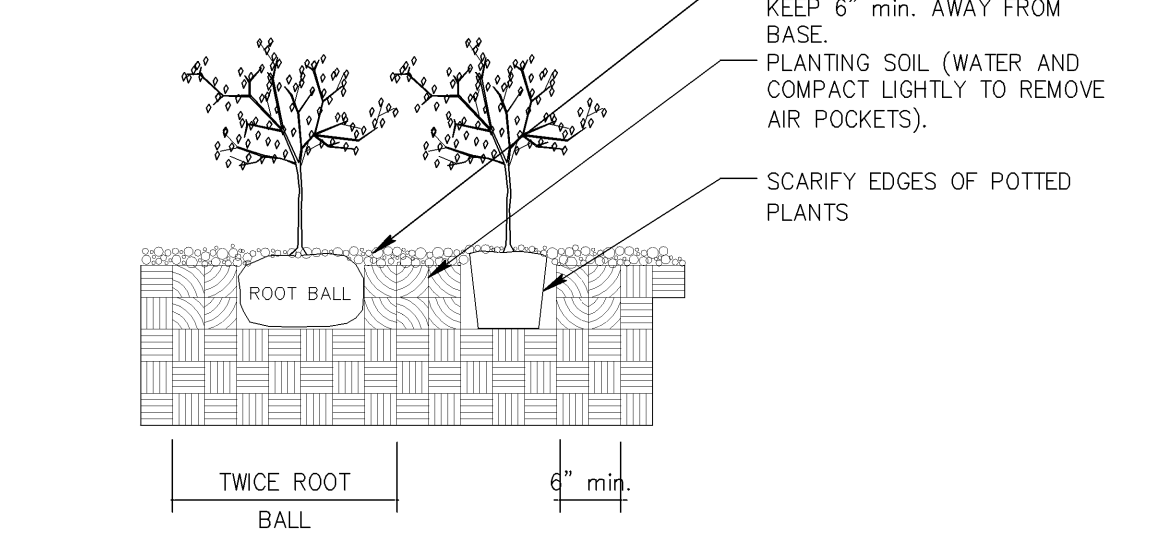
APPLICATION RATE: 2lbs/1000 Sq. Ft. *
 APPLY STRAW MULCH IMMEDIATELY AFTER SEEDING
 TURF STARTER FERTILIZER: 20-10-10
 APPLICATION RATE: 5lbs/1000 Sq. Ft.



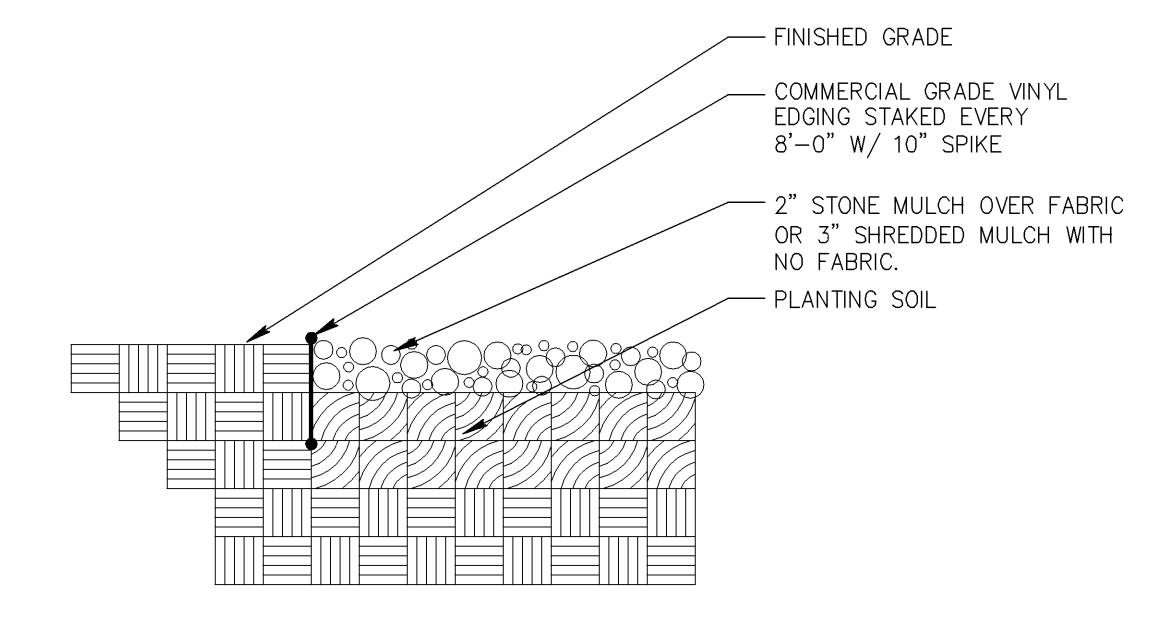
1) DECIDUOUS TREE
N.T.S.



2) CONIFEROUS TREE
N.T.S.



3) SHRUB PLANTING
N.T.S.



4) PLANTING EDGE
N.T.S.

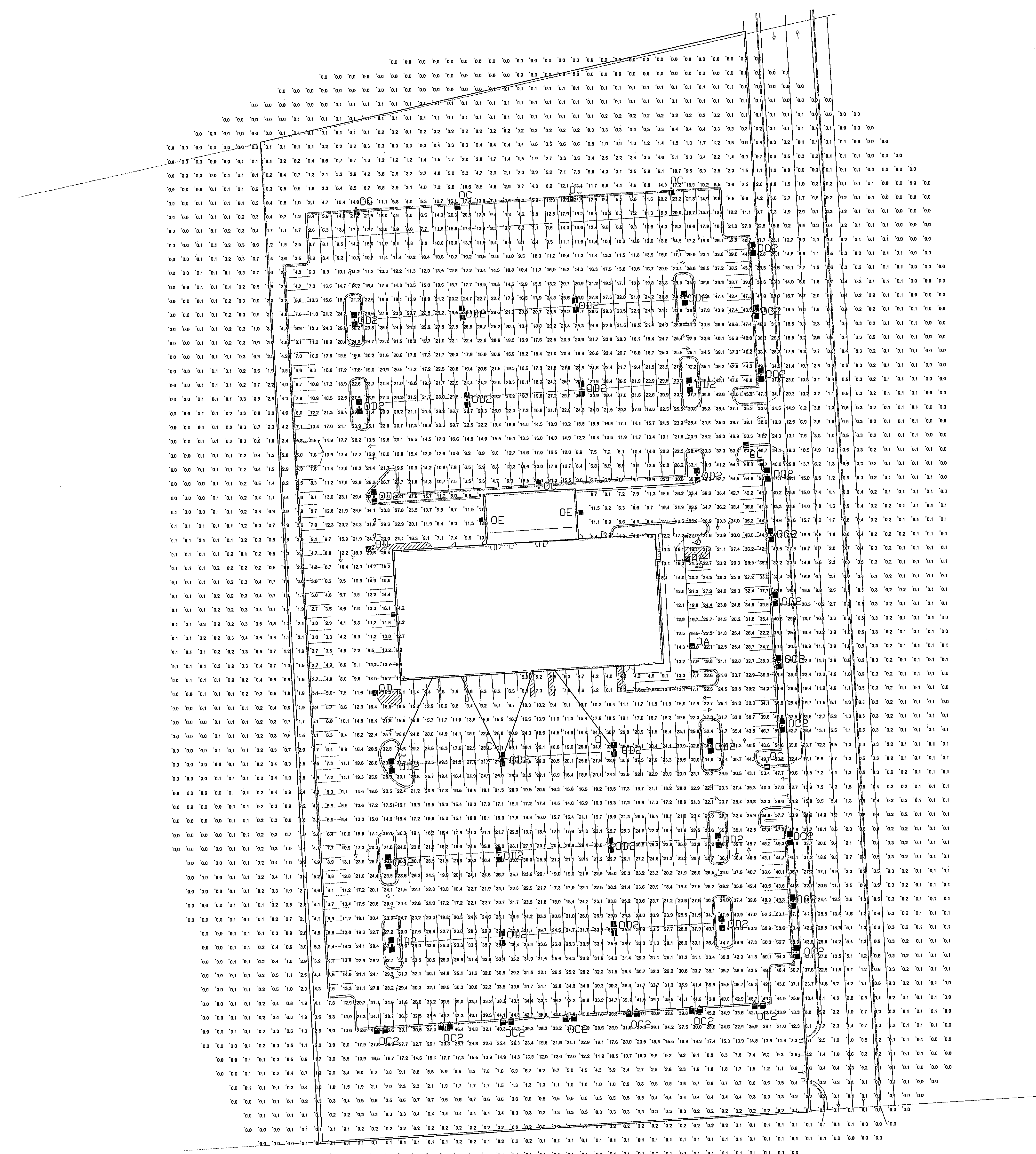
| REVISIONS: | | NOTE | | DATE |
|------------|--|------|--|------|
| | | | | |
| | | | | |
| | | | | |
| | | | | |

TDI ASSOCIATES, INC
All Rights Reserved
NW 22250 JOHNSON DRIVE, SUITE B4
WALWISHA, WISCONSIN 53186
PHONE 262-437-0400 FAX
262-437-0401

TDI ASSOCIATES, INC.
ARCHITECTS, ENGINEERS, PLANNERS

OWNERSHIP OF DOCUMENTS
This document and the ideas and design incorporated herein, are the instrument of professional service, is the sole property of TDI Associates, Inc., and is not to be used in whole or in part for any other project or purpose without the expressed written authorization of TDI Associates, Inc.

| | | |
|----------------------------|--------------------|--------------------|
| CITY OF MILWAUKEE, WI | | |
| DARROW NISSAN | | |
| SITE LANDSCAPE PLAN | | |
| SCALE: 1"= 40'-0" | JOB NO: II-172.000 | DATE: 10-13-11 |
| DESIGNED BY: ROB | DRAWN BY: ROB | CHECKED BY: |
| APPROVED BY: | ENGINEER | DATE |
| | | SHEET L-1.0 |



| STATISTICS | | | | | | |
|--------------|--------|---------|---------|---------|---------|-------|
| Description | Symbol | Avg | Max | Min | Avg/Min | |
| Calc Zone #1 | + | 11.9 fc | 63.7 fc | 0.0 fc | N/A | N/A |
| FRONT ROW | + | 43.8 fc | 63.7 fc | 27.2 fc | 2.3:1 | 1.6:1 |
| LOT ONLY | + | 22.8 fc | 63.7 fc | 2.4 fc | 26.5:1 | 9.5:1 |

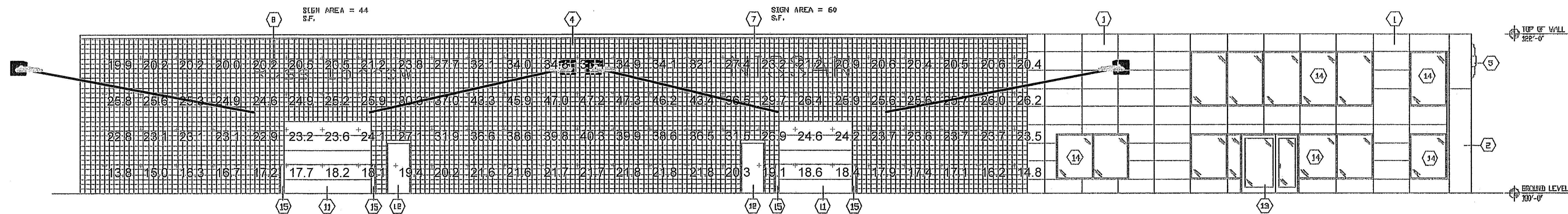
| LUMINAIRE SCHEDULE | | | | | | |
|--------------------|-------|-----|-------------------|---------------------------|---|-----------------|
| Symbol | Label | Qty | Catalog Number | Description | Lamp | File |
| ■ | OA | 2 | EC423-1-0H-1000MH | ECOLIML | CLEAR HORIZONTAL 1000M RATED FOR 10000 LUMENS | EC423-0H-1000MH |
| ■ | OC | 7 | EC423-2-FH-1000MH | ECOLIML | CLEAR HORIZONTAL 1000M RATED FOR 10000 LUMENS | EC423-FH-1000MH |
| ■ | OC2 | 18 | EC423-2-FH-1000MH | ECOLIML | CLEAR HORIZONTAL 1000M RATED FOR 10000 LUMENS | EC423-FH-1000MH |
| ■ | OD | 2 | EC423-1-0H-1000MH | ECOLIML | CLEAR HORIZONTAL 1000M RATED FOR 10000 LUMENS | EC423-0H-1000MH |
| ■ | OD2 | 22 | EC423-2-FH-1000MH | ECOLIML | CLEAR HORIZONTAL 1000M RATED FOR 10000 LUMENS | EC423-FH-1000MH |
| ■ | OE | 3 | EC418-FH-400PMH | ECOLIML | CLEAR HORIZONTAL 400PM RATED FOR 4000 LUMENS | EC418-FH-400PMH |
| ■ | A | 4 | FSL100M-MFP | DAYBRITE LARGE FLOODLIGHT | 1000MH | FSL100M-MFP |

| LUMINAIRE LOCATIONS | | | | | | | | | | | | |
|---------------------|-------|-------|-------|------|------|-------------|------|-------|-------|------|--|--|
| No. | Label | X | Y | Z | Mt | Orientation | TR | X | Y | Z | | |
| 1 | OC2 | 320.0 | 629.0 | 26.3 | 26.3 | 177.0 | 0.0 | | | | | |
| 2 | OC2 | 320.0 | 425.0 | 26.3 | 26.3 | 177.0 | 0.0 | | | | | |
| 3 | OC2 | 322.0 | 376.0 | 26.3 | 26.3 | 177.0 | 0.0 | | | | | |
| 4 | OC2 | 325.0 | 324.0 | 26.3 | 26.3 | 177.0 | 0.0 | | | | | |
| 5 | OC2 | 327.0 | 280.0 | 26.3 | 26.3 | 177.0 | 0.0 | | | | | |
| 6 | OC2 | 332.0 | 209.0 | 26.3 | 26.3 | 177.0 | 0.0 | | | | | |
| 7 | OC2 | 336.0 | 128.0 | 26.3 | 26.3 | 177.0 | 0.0 | | | | | |
| 8 | OC | 251.0 | 673.0 | 26.3 | 26.3 | 176.0 | 0.0 | 251.1 | 671.4 | 0.0 | | |
| 9 | OC | 179.0 | 699.0 | 26.3 | 26.3 | 176.0 | 0.0 | 179.1 | 697.4 | 0.0 | | |
| 10 | OC | 66.0 | 664.0 | 26.3 | 26.3 | 176.0 | 0.0 | 66.1 | 662.4 | 0.0 | | |
| 11 | OC | 26.0 | 601.0 | 26.3 | 26.3 | 176.0 | 0.0 | 26.1 | 599.4 | 0.0 | | |
| 12 | OC2 | 24.0 | 591.0 | 26.3 | 26.3 | -4.0 | 0.0 | | | | | |
| 13 | OC2 | 29.0 | 594.0 | 26.3 | 26.3 | -4.0 | 0.0 | | | | | |
| 14 | OC2 | 27.0 | 519.0 | 26.3 | 26.3 | -4.0 | 0.0 | | | | | |
| 15 | OC2 | 25.0 | 532.0 | 26.3 | 26.3 | -4.0 | 0.0 | | | | | |
| 16 | OC2 | 27.0 | 455.0 | 26.3 | 26.3 | -4.0 | 0.0 | | | | | |
| 17 | OC2 | 155.0 | 490.0 | 26.3 | 26.3 | -4.0 | 0.0 | 154.9 | 491.6 | 0.0 | | |
| 18 | OC2 | 268.0 | 498.0 | 26.3 | 26.3 | -4.0 | 0.0 | | | | | |
| 19 | OC2 | 48.0 | 383.0 | 26.3 | 26.3 | -4.0 | 0.0 | | | | | |
| 20 | OC2 | 276.0 | 276.0 | 26.3 | 26.3 | -4.0 | 0.0 | | | | | |
| 21 | OC2 | 45.0 | 195.0 | 26.3 | 26.3 | -4.0 | 0.0 | | | | | |
| 22 | OC2 | 281.0 | 208.0 | 26.3 | 26.3 | -4.0 | 0.0 | | | | | |
| 23 | OC2 | 47.0 | 136.0 | 26.3 | 26.3 | -4.0 | 0.0 | | | | | |
| 24 | OC2 | 283.0 | 149.0 | 26.3 | 26.3 | -4.0 | 0.0 | | | | | |
| 25 | OA | 290.0 | 345.0 | 26.3 | 26.3 | 86.0 | 0.0 | 291.6 | 346.1 | 0.0 | | |
| 26 | OA | 257.0 | 408.0 | 26.3 | 26.3 | 86.0 | 0.0 | 258.6 | 409.1 | 0.0 | | |
| 27 | OE | 162.0 | 442.0 | 20.0 | 20.0 | 86.0 | 0.0 | 163.4 | 442.1 | 0.0 | | |
| 28 | OE | 116.0 | 458.0 | 20.0 | 20.0 | 266.0 | 0.0 | 114.6 | 457.9 | 0.0 | | |
| 29 | OD | 36.0 | 416.0 | 26.3 | 26.3 | 266.0 | 0.0 | 34.4 | 417.9 | 0.0 | | |
| 30 | OD | 40.0 | 315.0 | 26.3 | 26.3 | 266.0 | 0.0 | 38.4 | 316.9 | 0.0 | | |
| 31 | OC | 59.0 | 371.0 | 20.0 | 20.0 | 266.0 | 0.0 | 57.4 | 371.9 | 0.0 | | |
| 32 | OC2 | 314.0 | 539.0 | 26.3 | 26.3 | 177.0 | 0.0 | | | | | |
| 33 | OC2 | 311.0 | 584.0 | 26.3 | 26.3 | 177.0 | 0.0 | | | | | |
| 34 | OC2 | 334.0 | 164.0 | 26.3 | 26.3 | 177.0 | 0.0 | | | | | |
| 35 | OC2 | 318.0 | 468.0 | 26.3 | 26.3 | 177.0 | 0.0 | | | | | |
| 36 | OC | 303.0 | 466.0 | 20.0 | 20.0 | -4.0 | 0.0 | 302.9 | 467.6 | 0.0 | | |
| 37 | OC | 316.0 | 263.0 | 20.0 | 20.0 | 176.0 | 0.0 | 316.1 | 261.4 | 0.0 | | |
| 38 | OC2 | 39.0 | 75.0 | 26.3 | 26.3 | 267.0 | 0.0 | | | | | |
| 39 | OC2 | 65.0 | 77.0 | 26.3 | 26.3 | 267.0 | 0.0 | | | | | |
| 40 | OC2 | 129.0 | 60.0 | 26.3 | 26.3 | 267.0 | 0.0 | | | | | |
| 41 | OC2 | 174.0 | 62.0 | 26.3 | 26.3 | 267.0 | 0.0 | | | | | |
| 42 | OC2 | 219.0 | 65.0 | 26.3 | 26.3 | 267.0 | 0.0 | | | | | |
| 43 | OC2 | 264.0 | 67.0 | 26.3 | 26.3 | 267.0 | 0.0 | | | | | |
| 44 | OC2 | 309.0 | 69.0 | 26.3 | 26.3 | 267.0 | 0.0 | | | | | |
| 45 | OD2 | 127.0 | 267.0 | 26.3 | 26.3 | -4.0 | 0.0 | | | | | |
| 46 | OD2 | 126.0 | 140.0 | 26.3 | 26.3 | -4.0 | 0.0 | | | | | |
| 47 | OD2 | 124.0 | 199.0 | 26.3 | 26.3 | -4.0 | 0.0 | | | | | |
| 48 | OD2 | 207.0 | 273.0 | 26.3 | 26.3 | -4.0 | 0.0 | | | | | |
| 49 | OD2 | 290.0 | 146.0 | 26.3 | 26.3 | -4.0 | 0.0 | | | | | |
| 50 | OD2 | 204.0 | 265.0 | 26.3 | 26.3 | -4.0 | 0.0 | | | | | |
| 51 | OC2 | 101.0 | 525.0 | 26.3 | 26.3 | -4.0 | 0.0 | | | | | |
| 52 | OC2 | 104.0 | 623.0 | 26.3 | 26.3 | -4.0 | 0.0 | | | | | |
| 53 | OC2 | 162.0 | 590.0 | 26.3 | 26.3 | -4.0 | 0.0 | | | | | |
| 54 | OC2 | 165.0 | 630.0 | 26.3 | 26.3 | -4.0 | 0.0 | | | | | |
| 55 | A | 49.0 | 263.0 | 20.0 | 20.0 | 25.5 | 85.1 | 78.0 | 326.0 | 14.0 | | |
| 56 | A | 127.0 | 267.0 | 20.0 | 20.0 | -26.2 | 84.8 | 68.0 | 326.0 | 14.0 | | |
| 57 | A | 127.0 | 267.0 | 20.0 | 20.0 | 20.4 | 84.8 | 150.0 | 329.0 | 14.0 | | |
| 58 | A | 207.0 | 273.0 | 20.0 | 20.0 | -35.4 | 85.2 | 165.0 | 330.0 | 14.0 | | |

Plan View
Scale 1"=30'

DARROW NISSAN
 MILWAUKEE, WI

Designer
 EH
 Date
 Oct 11 2011
 Scale
 36X48 PAPER
 Drawing No.



2 SOUTH ELEVATION
1/8" = 1'-0"

South Elevation
Scale 1" = 16'

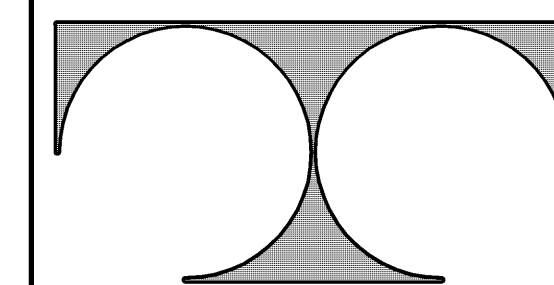
| STATISTICS | | | | | | |
|--------------|--------|---------|---------|---------|---------|---------|
| Description | Symbol | Avg | Max | Min | Max/Min | Avg/Min |
| Calc Zone #1 | + | 26.1 fc | 47.3 fc | 13.8 fc | 3.4:1 | 1.9:1 |

| LUMINAIRE SCHEDULE | | | | | | | | | |
|--------------------|-------|-----|----------------|---------------------------|--------|------------------|--------|------|-------|
| Symbol | Label | Qty | Catalog Number | Description | Lamp | File | Lumens | LLF | Watts |
| ■ | C | 4 | FSL10XM-MHP | DAYBRITE LARGE FLOODLIGHT | 1000MH | FSL1MMHP.ie s | 110000 | 0.72 | 1100 |

| LUMINAIRE LOCATIONS | | | | | | | | | | |
|---------------------|-------|----------|--------|------|------|-------------|------|-------|--------|------|
| No. | Label | Location | | | MH | Orientation | Tilt | Aim | | |
| | | X | Y | Z | | | | X | Y | Z |
| 1 | C | 691.0 | -484.0 | 20.0 | 20.0 | 28.1 | 85.0 | 723.0 | -424.0 | 14.0 |
| 2 | C | 766.0 | -484.0 | 20.0 | 20.0 | -24.2 | 84.8 | 739.0 | -424.0 | 14.0 |
| 3 | C | 842.0 | -484.0 | 20.0 | 20.0 | -28.1 | 85.0 | 810.0 | -424.0 | 14.0 |
| 4 | C | 770.0 | -484.0 | 20.0 | 20.0 | 22.6 | 84.7 | 795.0 | -424.0 | 14.0 |

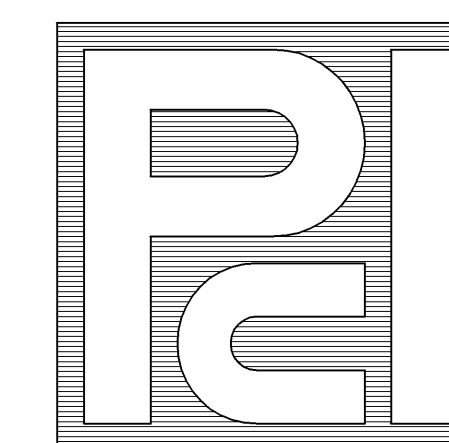
DARROW NISSAN
BUILDING FLOODLIGHTING

Designer
Date
Oct 10 2011
Scale
11X17 PAPER
Drawing No.



TDI ASSOCIATES, INC.
ARCHITECTS, ENGINEERS, PLANNERS

N8 W22350 JOHNSON DRIVE, SUITE B4
WAUKESHA, WISCONSIN 53186
PHONE 262-437-0400 FAX 262-437-0401



PROFESSIONAL
CONSULTANTS, INC.

300 COTTONWOOD AVE # 7
HARTLAND, WISCONSIN 53029
(262) 367-6080

RUSS DARROW NISSAN
METRO AUTO PARK

WEST METRO BOULEVARD
MILWAUKEE, WISCONSIN

TDI ASSOCIATES, INC
All Rights Reserved

OWNERSHIP OF DOCUMENTS

This document, and the ideas and design incorporated herein, as an instrument of professional service, is the sole property of TDI Associates, Inc., and is not to be used in whole or in part for any other project or purpose without the expressed written authorization of TDI Associates, Inc.

Sheet Title
FLOOR PLAN

Issued For: Date:

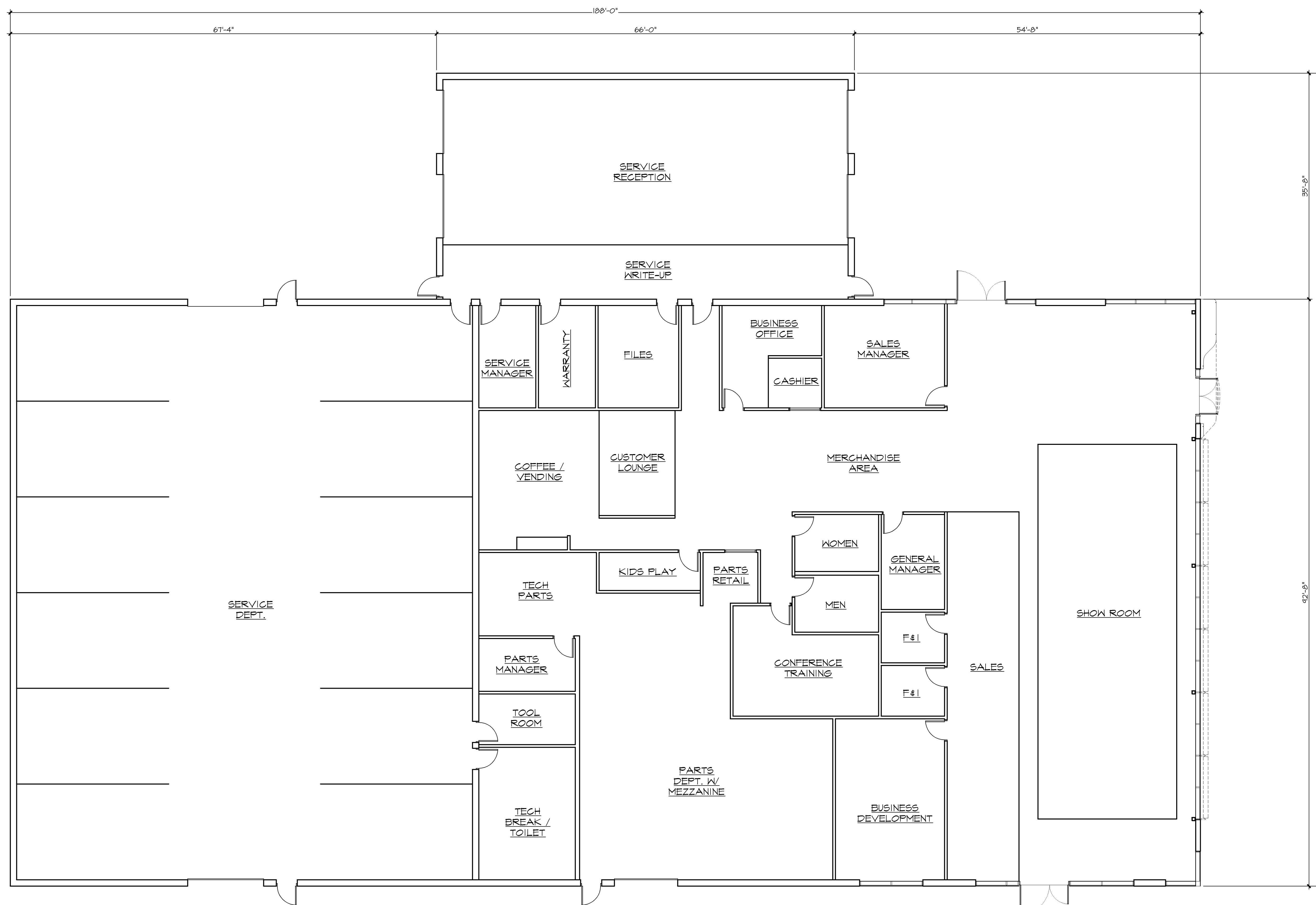
Date: 09-22-2011

Job NO.: 11172.000

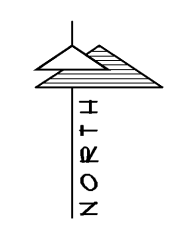
Drawn By: RJH

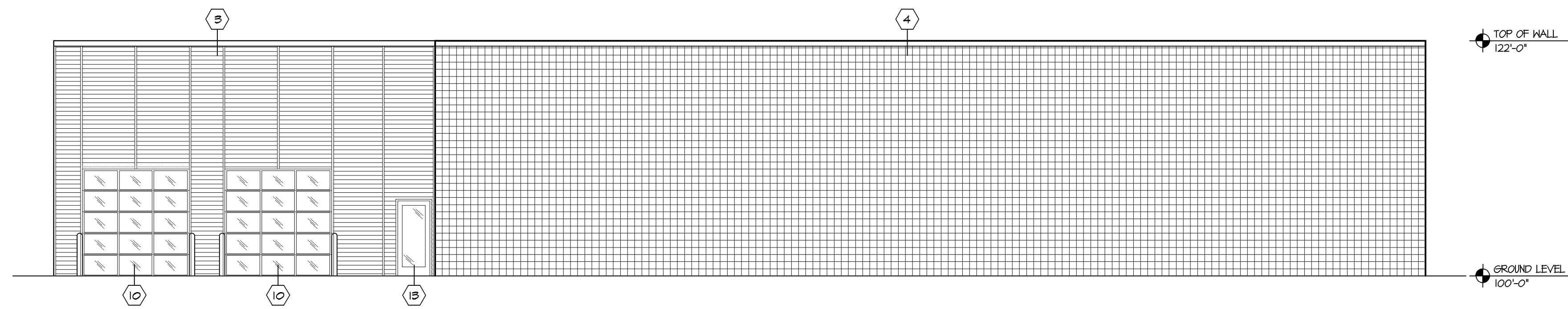
Sheet No.

A1.1

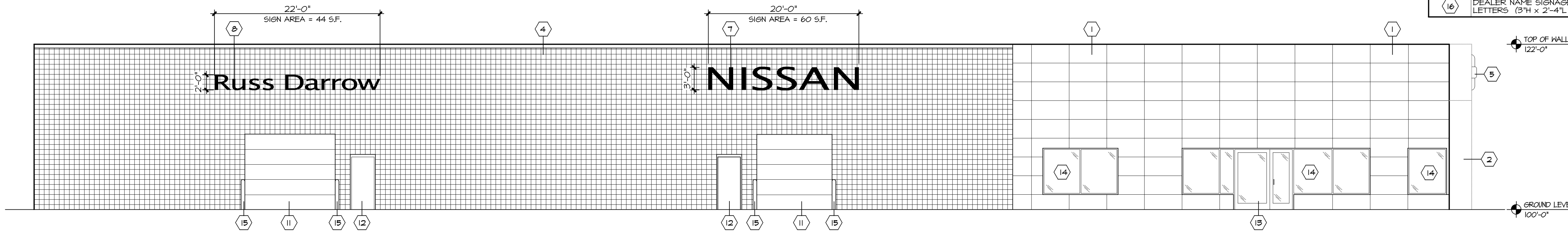


1 FLOOR PLAN
1/8"=1'-0"

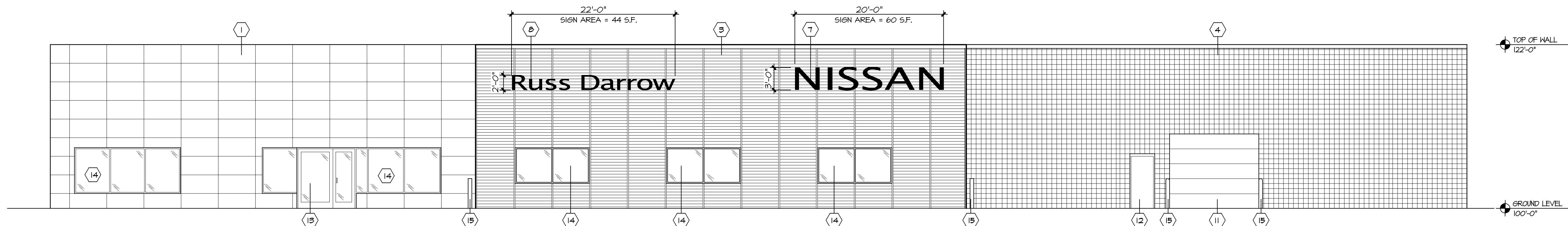




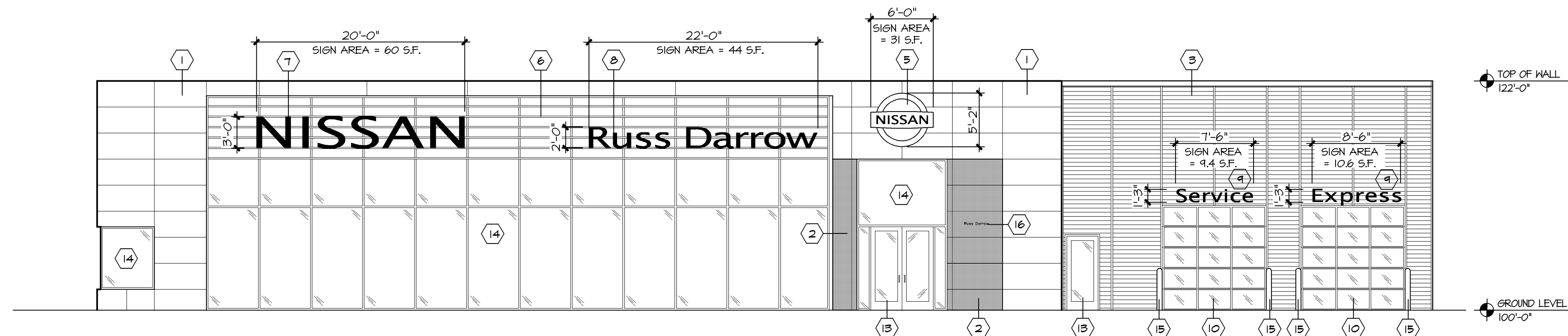
1 WEST ELEVATION
1/8" = 1'-0"



2 SOUTH ELEVATION
1/8" = 1'-0"



3 NORTH ELEVATION
1/8" = 1'-0"



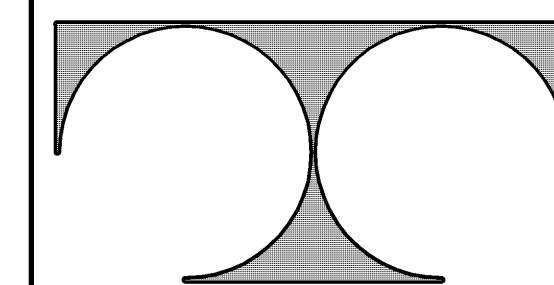
4 EAST ELEVATION
1/8" = 1'-0"

MATERIAL KEY

| TAG | DESCRIPTION |
|-----|---|
| 1 | ACM-1 SILVER ACM METALLIC PANELS |
| 2 | ACM-2 RED ACM TO MATCH NISSAN PANELS (ENTRANCE ELEMENT ONLY) |
| 3 | ARM-1 SILVER METALLIC RIBBED METAL PANELS |
| 4 | 8 x 8 SCOURED CMU WALL PAINTED LIGHT GRAY |
| 5 | SHOWROOM ENTRY NISSAN BRAND SYMBOL SIGNAGE |
| 6 | SILVER METALLIC LOUVER FASCIA |
| 7 | NISSAN CHANNEL LETTERS SIGNAGE, RED ACRYLIC FACE, L.E.D. INTERNAL ILLUMINATION (36"H x 20'-0"L approx.) |
| 8 | DEALER NAME SIGNAGE, WHITE ACRYLIC FACE, L.E.D. INTERNAL ILLUMINATION (24"H x 22'-0"L approx.) |
| 9 | SERVICE CHANNEL LETTERS SIGNAGE, WHITE ACRYLIC FACE, L.E.D. INTERNAL ILLUMINATION (15"H) |
| 10 | OVERHEAD DOOR WITH VISION GLAZING IN ALUMINUM FRAMES |
| 11 | INSULATED OVERHEAD DOOR PAINTED LIGHT GRAY TO MATCH CMU WALLS |
| 12 | INSULATED HOLLOW METAL DOOR |
| 13 | PREFINISHED CLEAR ANODIZED ALUMINUM DOOR W/ LITE |
| 14 | 1" CLEAR INSULATED GLASS W/ CLEAR ANODIZED ALUMINUM MULLIONS THERMALLY BROKEN |
| 15 | 6" PIPE BOLLARD PAINTED DARK GRAY |
| 16 | DEALER NAME SIGNAGE, LETTERS (3"H x 2'-4"L approx.) |

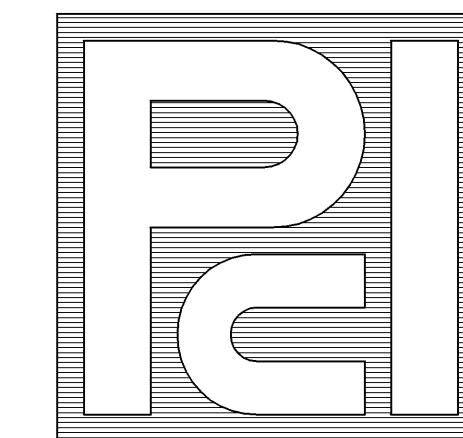
WALL SIGNAGE AREA

| | |
|---|------------|
| NISSAN SIGN EAST ELEVATION= | 60 S.F. |
| RUSS DARROW SIGN EAST ELEVATION= | 44 S.F. |
| NISSAN BRAND SYMBOL SIGN EAST ELEVATION= | 31 S.F. |
| SERVICE SIGN EAST ELEVATION= | 9.4 S.F. |
| EXPRESS SIGN EAST ELEVATION= | 10.6 S.F. |
| RUSS DARROW SIGN @ ENTRANCE EAST ELEVATION= | 0.5 S.F. |
| NISSAN SIGN NORTH ELEVATION= | 60 S.F. |
| RUSS DARROW SIGN NORTH ELEVATION= | 44 S.F. |
| NISSAN SIGN SOUTH ELEVATION= | 60 S.F. |
| RUSS DARROW SIGN SOUTH ELEVATION= | 44 S.F. |
| TOTAL SIGN AREA = | 363.5 S.F. |



TDI ASSOCIATES, INC.
ARCHITECTS, ENGINEERS, PLANNERS

N8 W22350 JOHNSON DRIVE, SUITE B4
WAUKESHA, WISCONSIN 53186
PHONE 262-437-0400 FAX 262-437-0401



PROFESSIONAL
CONSULTANTS, INC.

300 COTTONWOOD AVE # 7
HARTLAND, WISCONSIN 53029
(262) 367-6080

RUSS DARROW NISSAN
METRO AUTO PARK
WEST METRO BOULEVARD
MILWAUKEE, WISCONSIN

TDI ASSOCIATES, INC
All Rights Reserved

OWNERSHIP OF DOCUMENTS

This document, and the ideas and design incorporated herein, as an instrument of professional service, is the sole property of TDI Associates, Inc., and is not to be used in whole or in part for any other project or purpose without the expressed written authorization of TDI Associates, Inc.

Sheet Title
ELEVATIONS

Issued For: Date:

Date: 10-10-2011

Job NO.: 11172.000

Drawn By: RJH

Sheet No.

A2.1