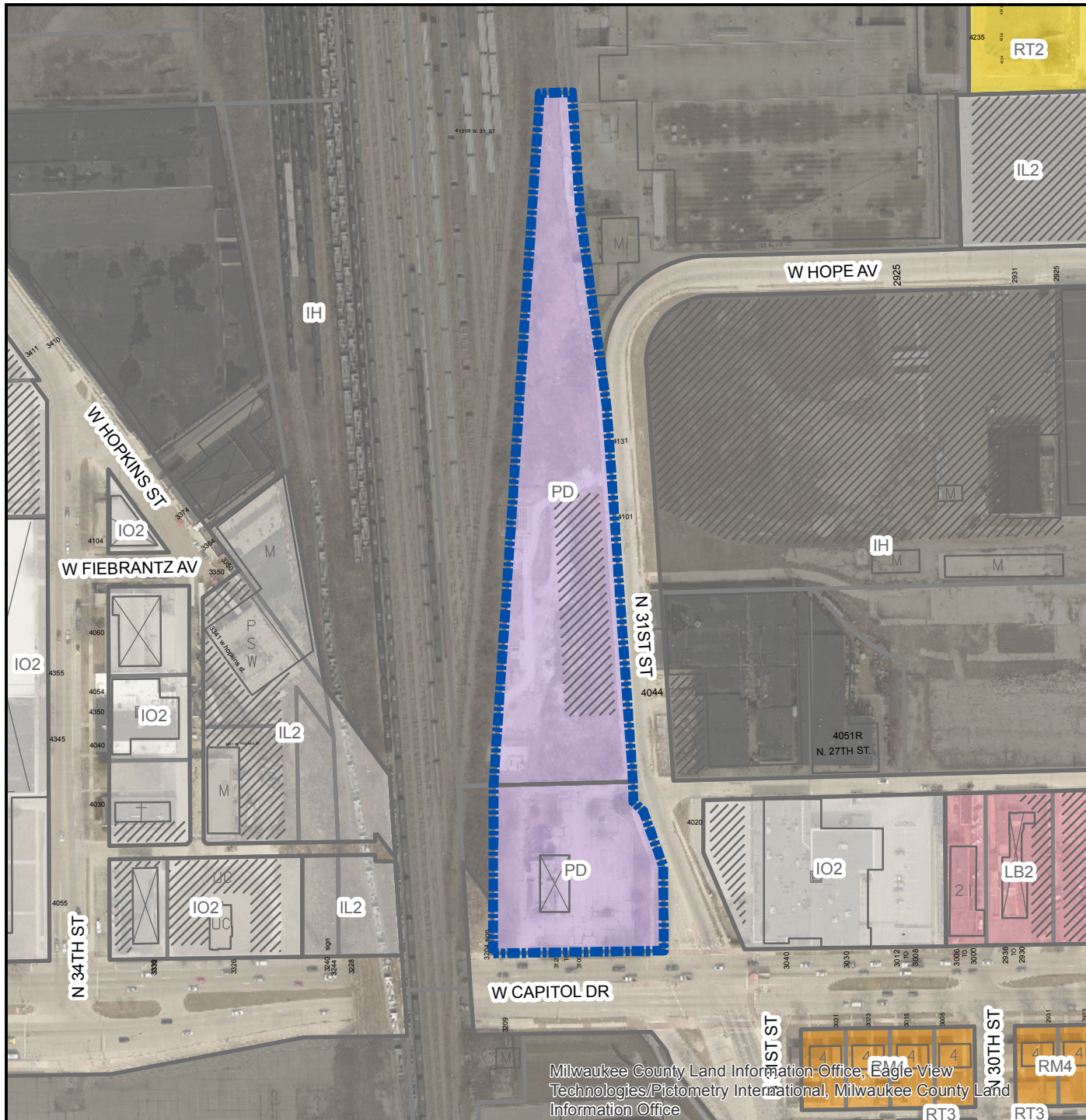





FN 181392
3100 W. Capitol Dr. & 4101-31 N. 31st St.
DPD to LB2 & PK
February 2019

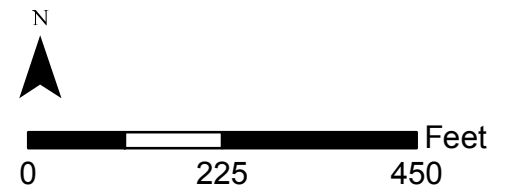


Legend

 Zoning Change Boundary

Zoning

-  Commercial - Commercial Service
-  Commercial - Neighborhood Shopping
-  Commercial - Local Business
-  Commercial - Regional Business
-  Downtown
-  Industrial - Office
-  Industrial - Light
-  Industrial - Mixed
-  Industrial - Heavy
-  Residential - Single Family
-  Residential - Two Family
-  Residential - Multi-Family
-  Residential - Residence and Office
-  Special - Parks
-  Special - Institutional
-  Special - Planned Development
-  Special - Redevelopment District



Milwaukee County Land Information Office, Eagle View Technologies/Pictometry International, Milwaukee County Land Information Office