

1 2 3 4 5 6 7

KEY VALUE	KEYNOTE TEXT
DESP-C	CONCRETE FULLED STEEL BEAMS
ESRF-A	PRECAST DOUBLE TEE FLOOR SYSTEM
BNH-SB	PRECAST INTERIOR BEARING/BEAR WALL
BNH-SA	STEEL CANOPY W/ MEMBRANE ROOF
BNH-SB	STEEL BEARING
BNH-C	STEEL CANOPY W/ EXPANDED METAL ROOF
ESM-SM	METAL SCREEN
BNH-AZ	METAL SCREEN
ESM-SB	METAL SCREEN
ESM-SD	METAL SCREEN
CSH-AE	STEEL GUARDRAIL SYSTEM
Q22H-C	SHOW REMOVAL CAUSE

PARKING - 2ND LEVEL			
DESCRIPTION	COUNT	WIDTH	LENGTH
ADA-CAR	5	8'-0"	18'-0"
CARPOOL	8	8'-0"	13'-0"
COMPACT	1	8'-0"	18'-0"
STANDARD	75	8'-0"	18'-0"
Grandtotal	97		



appstein uhlen : architects
 337 East Chiles Avenue
 Milwaukee Wisconsin 53202
 414.271.5288 fax 414.271.7794
 722 West Washington Ave. Suite 600
 Milwaukee Wisconsin 53201
 414.482.5289 fax 414.482.9800

Canopies are assumed to meet the definition and requirements of the zoning code, section 245-8 and require no special privilege - canopies are shown for clear understanding of the conditions

PROJECT INFORMATION
THE BREWERY

BLOCK 4 PARKING STRUCTURE

D 902 WEST JUNEAU AVENUE MILWAUKEE, WI

ISSUANCE AND REVISIONS
BID PACKAGE #3

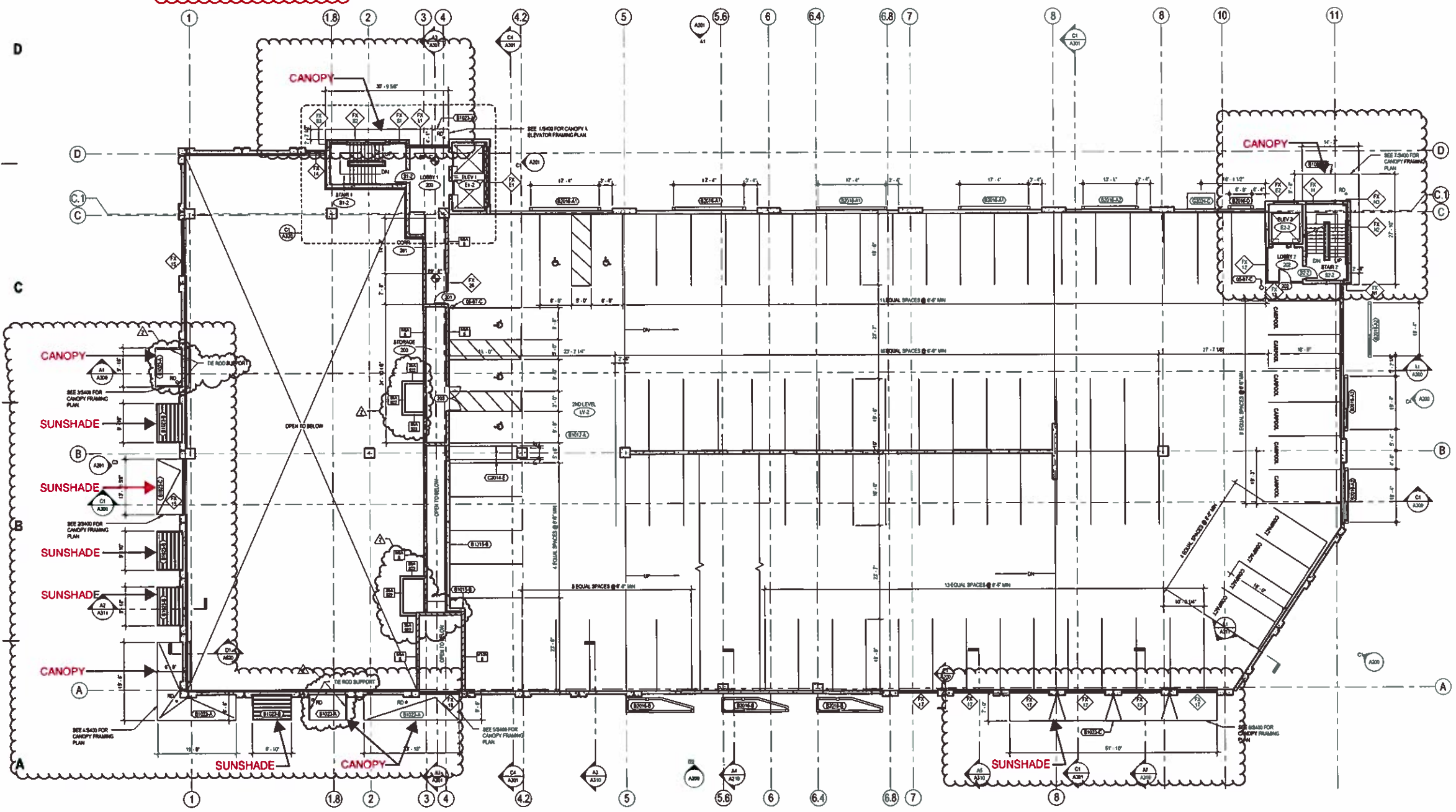
REVISIONS		
#	DATE	DESCRIPTION
7	1/14/2009	BID PACKAGE #3

KEY PLAN

SHEET INFORMATION

PROJECT MANAGER ER
PROJECT NUMBER 608087-01
DATE OCTOBER 21, 2008

2ND LEVEL
A102
 © Appstein Uhlen Architects, Inc.



E

D

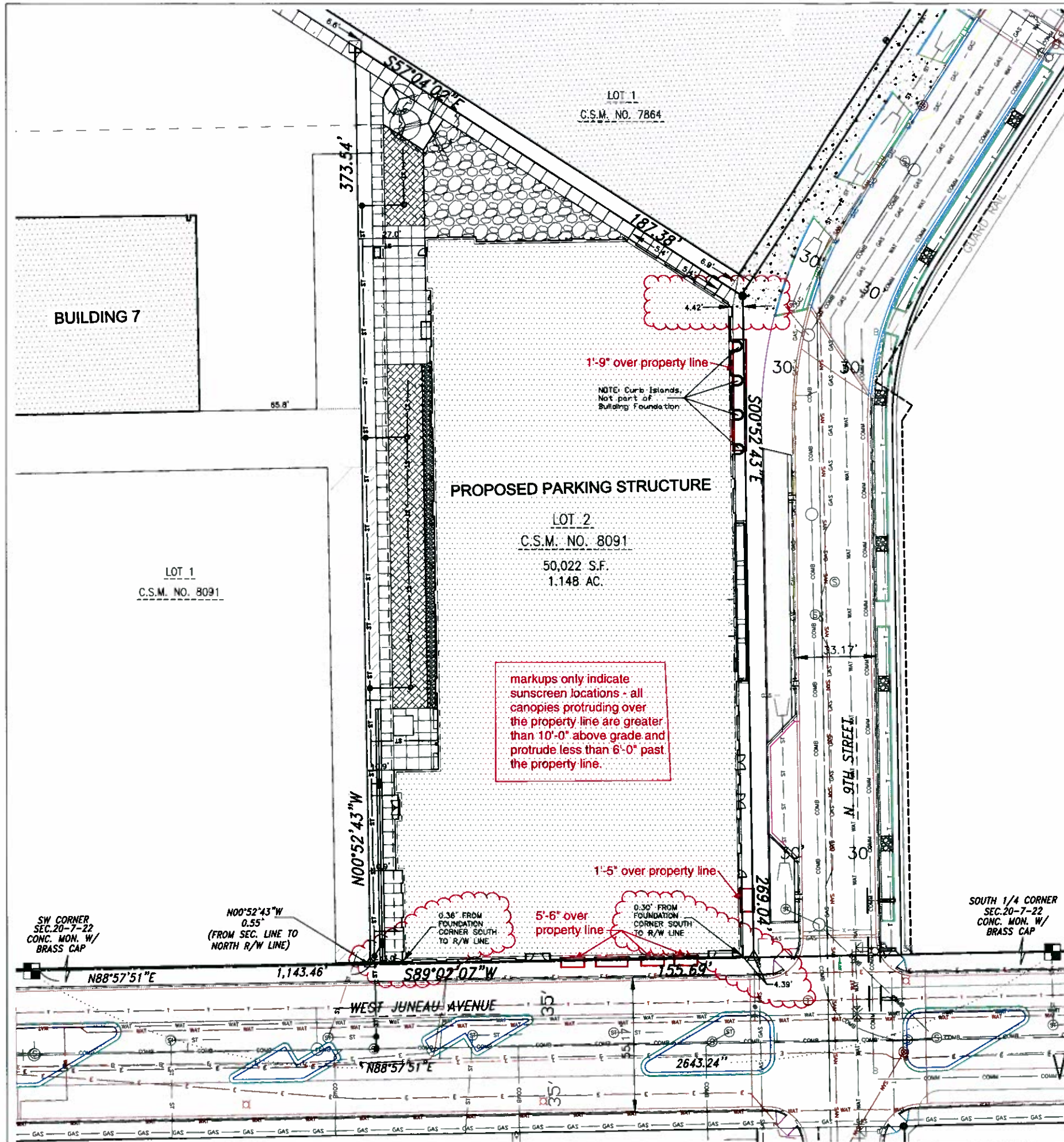
C

B

A

A1 2ND LEVEL
 302' x 10'

1 2 3 4 5 6 7



PLAT OF SURVEY

LOT 2, OF CERTIFIED SURVEY MAP No.8091, BEING A PART OF THE SOUTHWEST 1/4 OF THE SOUTHWEST 1/4 OF SECTION 20, TOWNSHIP 07 NORTH, RANGE 22 EAST, SITUATED WITHIN THE CITY OF MILWAUKEE, MILWAUKEE COUNTY, WISCONSIN.

NOTES:

LOT 2 (SUBJECT PARCEL) IS FOR THE PURPOSE OF CONSTRUCTING A PARKING STRUCTURE FOR THE BREWERY PROJECT.

THE PROPOSED PARKING STRUCTURE IS TO BE CONSTRUCTED UPON THE EXISTING FOUNDATION ALONG THE NORTHERLY, EASTERLY AND SOUTHERLY SIDES OF THE STRUCTURE.

ALONG NORTH 9th STREET:
 THE EAST LOT LINE OF LOT 2 (SUBJECT PARCEL) RUNS THROUGH THE PUBLIC SIDEWALK.
 THE CONCRETE PUBLIC SIDEWALK VARIES IN WIDTH BUT IS PRIMARILY 10.67' WIDE.
 THE DISTANCE FROM THE EDGE OF SIDEWALK TO THE BACK OF STREET CURB VARIES, BUT IS PRIMARILY 12.0'.
 THE PUBLIC STREET WIDTH IS 33.17' (BACK OF CURB - BACK OF CURB) WITH A RIGHT OF WAY WIDTH OF 60'.

ALONG WEST JUNEAU AVENUE:
 THE SOUTH LOT LINE OF LOT 2 (SUBJECT PARCEL) RUNS ALONG THE NORTHERLY EDGE OF THE PUBLIC SIDEWALK.
 THE CONCRETE PUBLIC SIDEWALK IS 7.4' WIDE ALONG SAID LOT 2, AND ABUTS AGAINST THE BACK OF STREET CURB.
 THE PUBLIC STREET WIDTH IS 55.17' (BACK OF CURB - BACK OF CURB) WITH A RIGHT OF WAY WIDTH OF 70'.

THE REQUIRED PROPOSED AND EXISTING SITE GRADES ARE SHOWN ON THE ACCOMPANYING SITE PLAN.

SEE SAID SITE PLAN FOR SPECIFICS ON PROPOSED SITE IMPROVEMENTS.

LEGEND:

- INDICATES 1" IRON PIPE FOUND.
- △ INDICATES NO MONUMENTATION FOUND OR SET. (RUBBLE PILES OVER CORNER)
- INDICATES NO MONUMENTATION FOUND OR SET. (CORNER UNDER EXCAVATION)

BEARINGS ARE REFERENCED TO GRID NORTH OF THE WISCONSIN COORDINATE SYSTEM, SOUTH ZONE (NAD'27).
 THE SOUTH LINE OF THE SW 1/4 OF SECTION 20, BEARING N 88°57'51" E (DECEMBER, 2005 DATUM).

SURVEYOR'S CERTIFICATE:

STATE OF WISCONSIN
 MILWAUKEE COUNTY) S.S.

I HEREBY CERTIFY THAT I HAVE MADE A SURVEY OF THE LAND SHOWN AND DESCRIBED HEREON AND THAT THIS PLAT OF SURVEY IS A CORRECT REPRESENTATION OF THE BOUNDARIES OF THE LAND SURVEYED AND THE LOCATION OF BUILDINGS ON SAID LAND.

DATED THIS 22nd DAY OF AUGUST, 2008.

Erik A. Gustafson
 ERIK A. GUSTAFSON S-2329



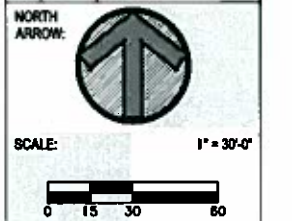
KAPUR & ASSOCIATES, INC.
 CONSULTING ENGINEERS
 www.kapurengineers.com

PROJECT:
**THE BREWERY
 BLOCK 4 -
 PARKING STRUCTURE
 MILWAUKEE, WI**

CLIENT:
BREWERY PROJECT LLC

OWNER:
**BREWERY PROJECT LLC
 710 NORTH PLANKINTON AVENUE
 SUITE 1200
 MILWAUKEE, WI 53203
 c/o KEVIN MANTZ (AGENT)**

REVISIONS:		
#	DATE	DESCRIPTION



SEAL:

SHEET:
PLAT OF SURVEY

PROJECT NUMBER: 06.0143.02
 DATE: August 29, 2008

SHEET NUMBER:
S101



eppstein uhen : architects
 333 East Chicago Street
 Milwaukee, WI 53202
 Tel: 414.271.5500 Fax: 414.271.7700
 222 West Washington Ave., Suite 600
 Milwaukee, WI 53233
 Tel: 414.422.5200 Fax: 414.422.5800

PROJECT INFORMATION
THE BREWERY

BLOCK 4 PARKING STRUCTURE

D 902 WEST JUNEAU AVENUE MILWAUKEE, WI

ISSUANCE AND REVISIONS
BID PACKAGE #3

REVISIONS

#	DATE	DESCRIPTION

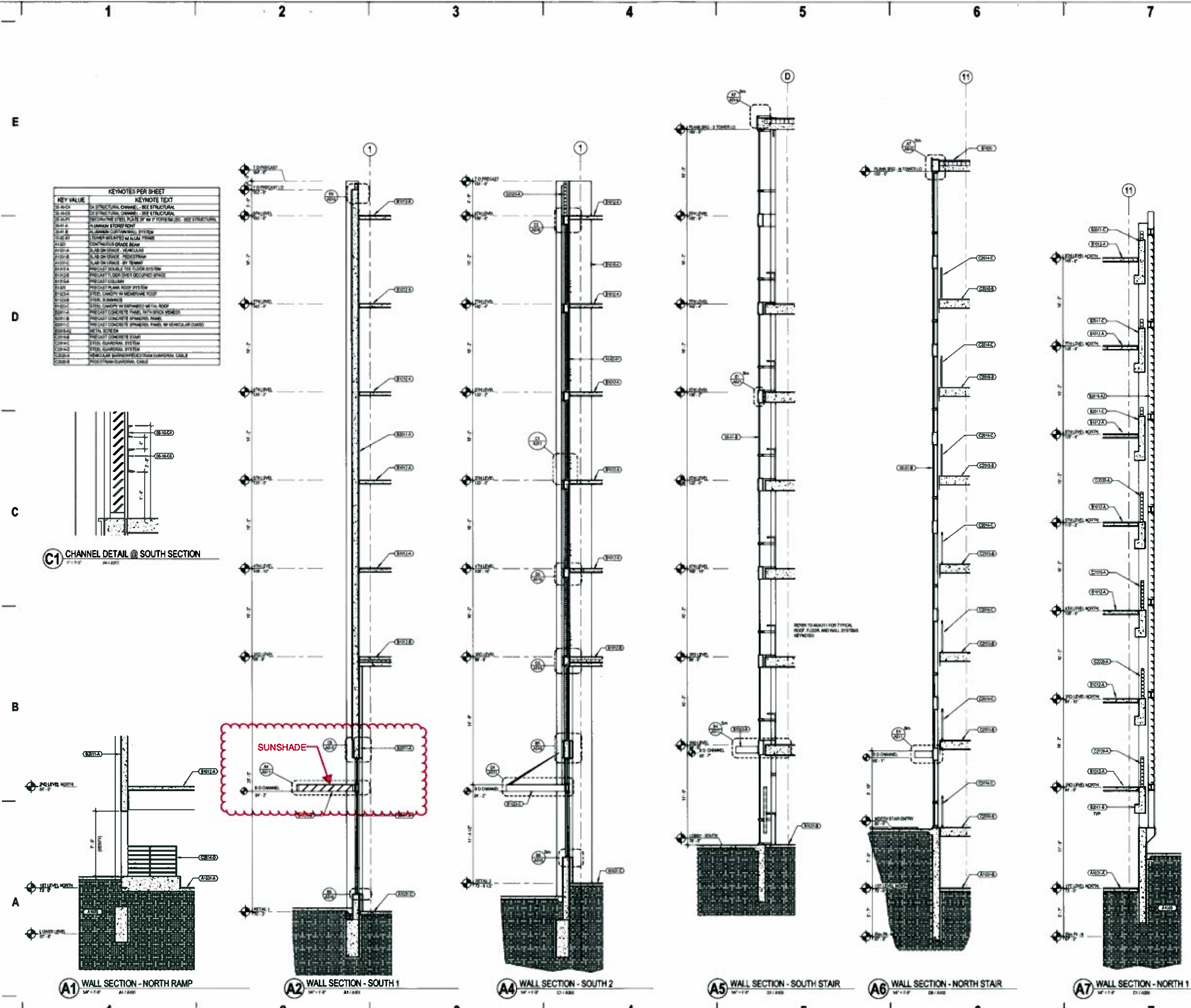
KEY PLAN

SHEET INFORMATION

PROJECT MANAGER ER
 PROJECT NUMBER 600287-01
 DATE OCTOBER 21, 2008

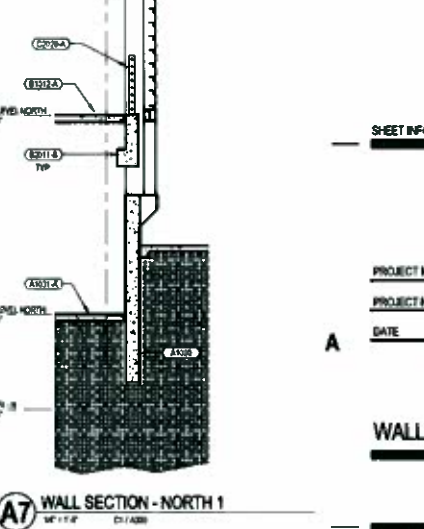
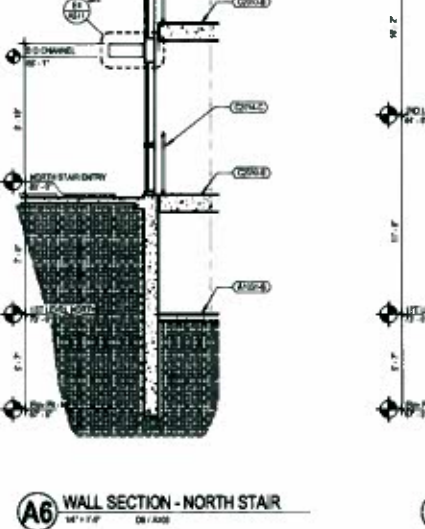
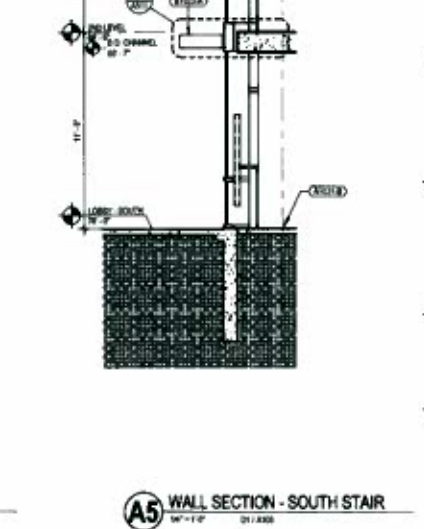
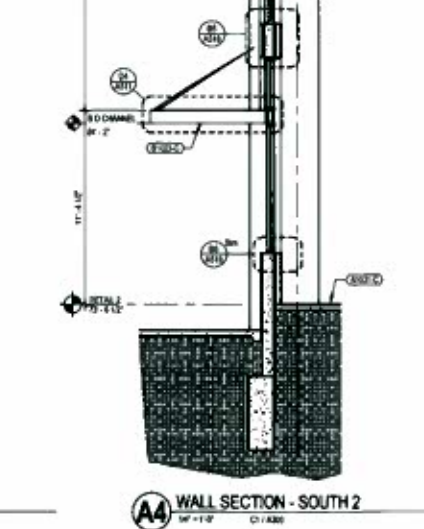
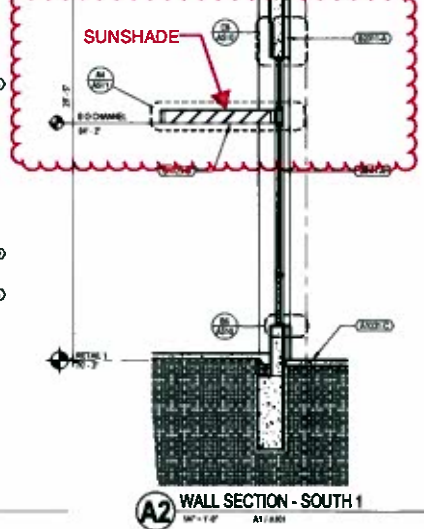
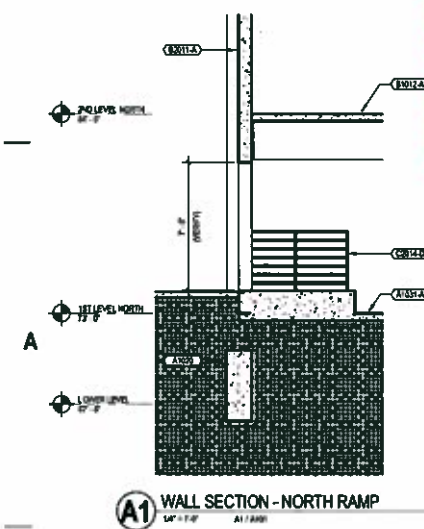
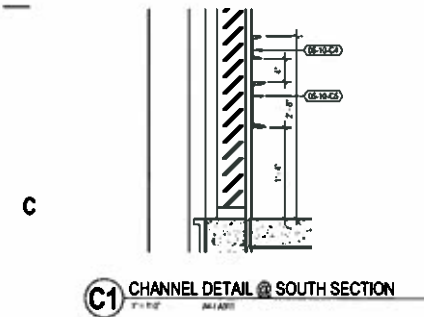
WALL SECTIONS
A311

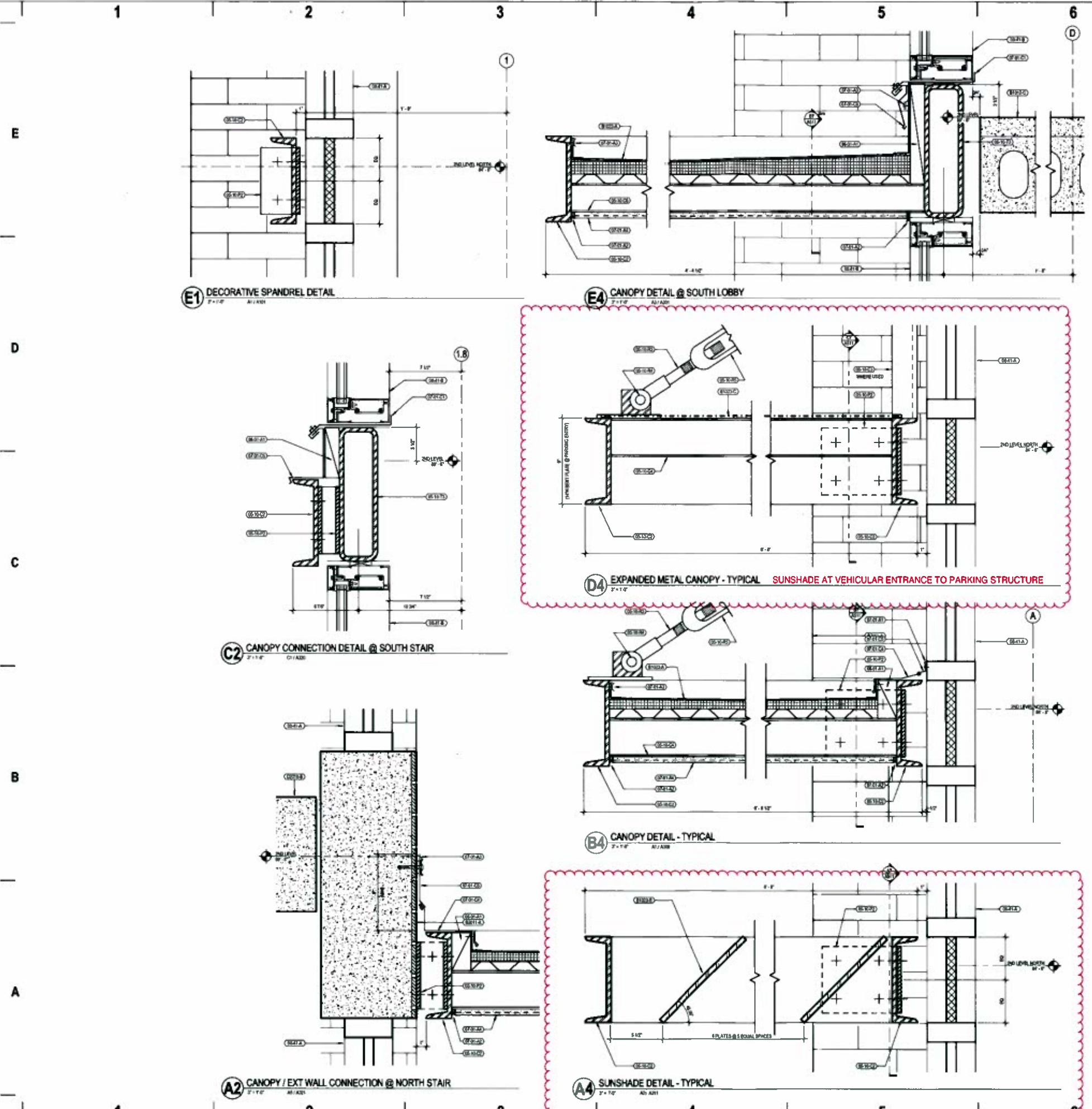
© Eppstein Uhen Architects, Inc.



KEYNOTES PER SHEET

KEY VALUE	KEYNOTE TEXT
CS-100A	1/4" STRUCTURAL CHANNEL - SEE STRUCTURAL
CS-100B	3/4" STRUCTURAL CHANNEL - SEE STRUCTURAL
CS-100C	STRUCTURAL STEEL PLATE 1/2" x 12" x 1/2" - SEE STRUCTURAL
CS-100D	ALUMINUM STOREFRONT
CS-100E	ALUMINUM CURTAIN WALL SYSTEM
CS-100F	1" TYPICALLY ISOLATED ALUM. FRAME
CS-100G	20" TYPICALLY GRADE BEAM
CS-100H	SLAB ON GROUND - VENTILATED
CS-100I	SLAB ON GROUND - NON-VENTILATED
CS-100J	SLAB ON GROUND - BY OTHER
CS-100K	PRECAST DOUBLE TEE FLOOR SYSTEM
CS-100L	PRECAST CONCRETE DEEP BEET OCCUPIED SPACE
CS-100M	PRECAST COLUMN
CS-100N	PRECAST PLANK ROOF SYSTEM
CS-100O	STEEL CANOPY IN MEMBRANE ROOF
CS-100P	STEEL CANOPY IN SHIMMED METAL ROOF
CS-100Q	PRECAST CONCRETE PANEL WITH BRICK VENEER
CS-100R	PRECAST CONCRETE SPANDREL PANEL
CS-100S	PRECAST CONCRETE SPANDREL PANEL WITH VERTICAL CURVED
CS-100T	METAL SCREEN
CS-100U	PRECAST CONCRETE SLAB
CS-100V	STEEL GUARDRAIL SYSTEM
CS-100W	STEEL GUARDRAIL SYSTEM
CS-100X	VENTILATED BARRIERSPECIFIC FROM VERTICAL CABLE
CS-100Y	PRECAST CONCRETE CABLE





KEYNOTES PER SHEET	
KEY VALUE	KEYNOTE TEXT
05-10-01	COMPARTMENTALITY - SEE STRUCT.
05-10-02	CONSTRUCTION CHANNEL - SEE STRUCTURAL
05-10-03	CS STRUCTURAL CHANNEL - SEE STRUCTURAL
05-10-04	CS STRUCTURAL CHANNEL - SEE STRUCTURAL
05-10-05	CS STRUCTURAL CHANNEL - SEE STRUCTURAL
05-10-06	CS STRUCTURAL CHANNEL - SEE STRUCTURAL
05-10-07	CS STRUCTURAL CHANNEL - SEE STRUCTURAL
05-10-08	CS STRUCTURAL CHANNEL - SEE STRUCTURAL
05-10-09	CS STRUCTURAL CHANNEL - SEE STRUCTURAL
05-10-10	CS STRUCTURAL CHANNEL - SEE STRUCTURAL
05-10-11	CS STRUCTURAL CHANNEL - SEE STRUCTURAL
05-10-12	CS STRUCTURAL CHANNEL - SEE STRUCTURAL
05-10-13	CS STRUCTURAL CHANNEL - SEE STRUCTURAL
05-10-14	CS STRUCTURAL CHANNEL - SEE STRUCTURAL
05-10-15	CS STRUCTURAL CHANNEL - SEE STRUCTURAL
05-10-16	CS STRUCTURAL CHANNEL - SEE STRUCTURAL
05-10-17	CS STRUCTURAL CHANNEL - SEE STRUCTURAL
05-10-18	CS STRUCTURAL CHANNEL - SEE STRUCTURAL
05-10-19	CS STRUCTURAL CHANNEL - SEE STRUCTURAL
05-10-20	CS STRUCTURAL CHANNEL - SEE STRUCTURAL
05-10-21	CS STRUCTURAL CHANNEL - SEE STRUCTURAL
05-10-22	CS STRUCTURAL CHANNEL - SEE STRUCTURAL
05-10-23	CS STRUCTURAL CHANNEL - SEE STRUCTURAL
05-10-24	CS STRUCTURAL CHANNEL - SEE STRUCTURAL
05-10-25	CS STRUCTURAL CHANNEL - SEE STRUCTURAL
05-10-26	CS STRUCTURAL CHANNEL - SEE STRUCTURAL
05-10-27	CS STRUCTURAL CHANNEL - SEE STRUCTURAL
05-10-28	CS STRUCTURAL CHANNEL - SEE STRUCTURAL
05-10-29	CS STRUCTURAL CHANNEL - SEE STRUCTURAL
05-10-30	CS STRUCTURAL CHANNEL - SEE STRUCTURAL
05-10-31	CS STRUCTURAL CHANNEL - SEE STRUCTURAL
05-10-32	CS STRUCTURAL CHANNEL - SEE STRUCTURAL
05-10-33	CS STRUCTURAL CHANNEL - SEE STRUCTURAL
05-10-34	CS STRUCTURAL CHANNEL - SEE STRUCTURAL
05-10-35	CS STRUCTURAL CHANNEL - SEE STRUCTURAL
05-10-36	CS STRUCTURAL CHANNEL - SEE STRUCTURAL
05-10-37	CS STRUCTURAL CHANNEL - SEE STRUCTURAL
05-10-38	CS STRUCTURAL CHANNEL - SEE STRUCTURAL
05-10-39	CS STRUCTURAL CHANNEL - SEE STRUCTURAL
05-10-40	CS STRUCTURAL CHANNEL - SEE STRUCTURAL
05-10-41	CS STRUCTURAL CHANNEL - SEE STRUCTURAL
05-10-42	CS STRUCTURAL CHANNEL - SEE STRUCTURAL
05-10-43	CS STRUCTURAL CHANNEL - SEE STRUCTURAL
05-10-44	CS STRUCTURAL CHANNEL - SEE STRUCTURAL
05-10-45	CS STRUCTURAL CHANNEL - SEE STRUCTURAL
05-10-46	CS STRUCTURAL CHANNEL - SEE STRUCTURAL
05-10-47	CS STRUCTURAL CHANNEL - SEE STRUCTURAL
05-10-48	CS STRUCTURAL CHANNEL - SEE STRUCTURAL
05-10-49	CS STRUCTURAL CHANNEL - SEE STRUCTURAL
05-10-50	CS STRUCTURAL CHANNEL - SEE STRUCTURAL
05-10-51	CS STRUCTURAL CHANNEL - SEE STRUCTURAL
05-10-52	CS STRUCTURAL CHANNEL - SEE STRUCTURAL
05-10-53	CS STRUCTURAL CHANNEL - SEE STRUCTURAL
05-10-54	CS STRUCTURAL CHANNEL - SEE STRUCTURAL
05-10-55	CS STRUCTURAL CHANNEL - SEE STRUCTURAL
05-10-56	CS STRUCTURAL CHANNEL - SEE STRUCTURAL
05-10-57	CS STRUCTURAL CHANNEL - SEE STRUCTURAL
05-10-58	CS STRUCTURAL CHANNEL - SEE STRUCTURAL
05-10-59	CS STRUCTURAL CHANNEL - SEE STRUCTURAL
05-10-60	CS STRUCTURAL CHANNEL - SEE STRUCTURAL
05-10-61	CS STRUCTURAL CHANNEL - SEE STRUCTURAL
05-10-62	CS STRUCTURAL CHANNEL - SEE STRUCTURAL
05-10-63	CS STRUCTURAL CHANNEL - SEE STRUCTURAL
05-10-64	CS STRUCTURAL CHANNEL - SEE STRUCTURAL
05-10-65	CS STRUCTURAL CHANNEL - SEE STRUCTURAL
05-10-66	CS STRUCTURAL CHANNEL - SEE STRUCTURAL
05-10-67	CS STRUCTURAL CHANNEL - SEE STRUCTURAL
05-10-68	CS STRUCTURAL CHANNEL - SEE STRUCTURAL
05-10-69	CS STRUCTURAL CHANNEL - SEE STRUCTURAL
05-10-70	CS STRUCTURAL CHANNEL - SEE STRUCTURAL
05-10-71	CS STRUCTURAL CHANNEL - SEE STRUCTURAL
05-10-72	CS STRUCTURAL CHANNEL - SEE STRUCTURAL
05-10-73	CS STRUCTURAL CHANNEL - SEE STRUCTURAL
05-10-74	CS STRUCTURAL CHANNEL - SEE STRUCTURAL
05-10-75	CS STRUCTURAL CHANNEL - SEE STRUCTURAL
05-10-76	CS STRUCTURAL CHANNEL - SEE STRUCTURAL
05-10-77	CS STRUCTURAL CHANNEL - SEE STRUCTURAL
05-10-78	CS STRUCTURAL CHANNEL - SEE STRUCTURAL
05-10-79	CS STRUCTURAL CHANNEL - SEE STRUCTURAL
05-10-80	CS STRUCTURAL CHANNEL - SEE STRUCTURAL
05-10-81	CS STRUCTURAL CHANNEL - SEE STRUCTURAL
05-10-82	CS STRUCTURAL CHANNEL - SEE STRUCTURAL
05-10-83	CS STRUCTURAL CHANNEL - SEE STRUCTURAL
05-10-84	CS STRUCTURAL CHANNEL - SEE STRUCTURAL
05-10-85	CS STRUCTURAL CHANNEL - SEE STRUCTURAL
05-10-86	CS STRUCTURAL CHANNEL - SEE STRUCTURAL
05-10-87	CS STRUCTURAL CHANNEL - SEE STRUCTURAL
05-10-88	CS STRUCTURAL CHANNEL - SEE STRUCTURAL
05-10-89	CS STRUCTURAL CHANNEL - SEE STRUCTURAL
05-10-90	CS STRUCTURAL CHANNEL - SEE STRUCTURAL
05-10-91	CS STRUCTURAL CHANNEL - SEE STRUCTURAL
05-10-92	CS STRUCTURAL CHANNEL - SEE STRUCTURAL
05-10-93	CS STRUCTURAL CHANNEL - SEE STRUCTURAL
05-10-94	CS STRUCTURAL CHANNEL - SEE STRUCTURAL
05-10-95	CS STRUCTURAL CHANNEL - SEE STRUCTURAL
05-10-96	CS STRUCTURAL CHANNEL - SEE STRUCTURAL
05-10-97	CS STRUCTURAL CHANNEL - SEE STRUCTURAL
05-10-98	CS STRUCTURAL CHANNEL - SEE STRUCTURAL
05-10-99	CS STRUCTURAL CHANNEL - SEE STRUCTURAL
05-10-100	CS STRUCTURAL CHANNEL - SEE STRUCTURAL



eppstein uhen : architects
 333 East Chicago Street
 Milwaukee, Wisconsin 53202
 W 48° 27' 53" N L 88° 21' 17" W
 722 West Washington Ave. 8th Fl.
 Milwaukee, Wisconsin 53233
 W 92° 42' 52" N L 88° 45' 00" W

PROJECT INFORMATION
THE BREWERY

BLOCK 4 PARKING
 STRUCTURE

D 902 WEST JUNEAU
 AVENUE
 MILWAUKEE, WI

ISSUANCE AND REVISIONS
BID PACKAGE #3

REVISIONS		
#	DATE	DESCRIPTION

KEY PLAN

SHEET INFORMATION

PROJECT MANAGER ER
 PROJECT NUMBER 00087-01
 DATE OCTOBER 21, 2008

EXTERIOR SECTION
 DETAILS

A511

© Eppstein Uhen Architects, Inc.